



## Appendix B DASy Measurement Results

Table of contents
GSM850 Body
GSM1900 Body
UMTS Band 2 Body
UMTS Band 5 Body
LTE Band 4 Body
LTE Band 5 Body
LTE Band 7 Body
LTE Band 12 Body
LTE Band 17 Body
LTE Band 26 Body
LTE Band 38 Body
LTE Band 41 Body
WiFi 2.4G Body
WiFi 5G Body
BT Body

Test Laboratory: HUAWEI SAR/HAC Lab

### CMR-AL09 GSM850 GPRS 2TS 190CH Top Side 0mm

**DUT: CMR-AL09; Type: Tablet; Serial: SAR4**

Communication System: UID 0, HW-GSM\GPRS\EGPRS-2TS (0); Frequency: 836.6 MHz; Duty Cycle: 1:4.10015

Medium parameters used:  $f = 837$  MHz;  $\sigma = 1.001$  S/m;  $\epsilon_r = 53.421$ ;  $\rho = 1000$  kg/m<sup>3</sup>

Phantom section: Flat Section

DASY Configuration:

- ε Probe: EX3DV4 - SN3743; ConvF(9.4, 9.4, 9.4); Calibrated: 2017/11/23;
- ε Sensor-Surface: 1.4mm (Mechanical Surface Detection),  $z = -9.0, 31.0$
- ε Electronics: DAE4 Sn1235; Calibrated: 2017/11/16
- ε Phantom: ELI v4.0; Type: QDOVA001BB; Serial: TP:1110
- ε DASY52 52.8.8(1222); SEMCAD X 14.6.10(7373)

**Configuration/Body/Area Scan (6x21x1):** Measurement grid:  $dx=15$ mm,  $dy=15$ mm

Maximum value of SAR (measured) = 0.271 W/kg

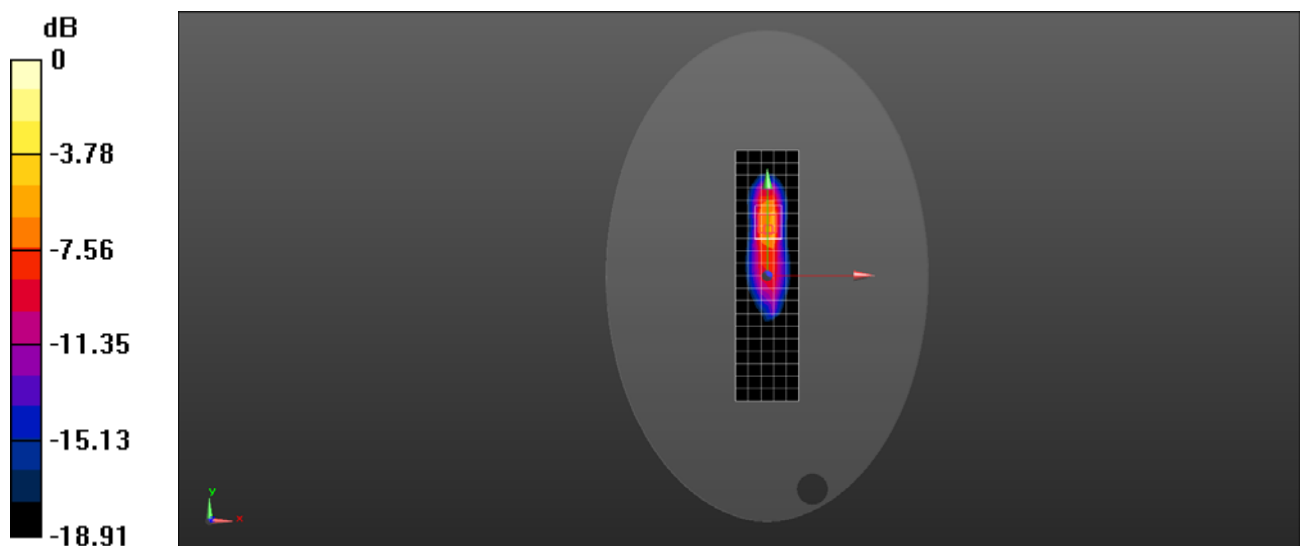
**Configuration/Body/Zoom Scan (5x6x7)/Cube 0:** Measurement grid:  $dx=8$ mm,  $dy=8$ mm,  $dz=5$ mm

Reference Value = 12.36 V/m; Power Drift = -0.06 dB

Peak SAR (extrapolated) = 1.40 W/kg

**SAR(1 g) = 0.397 W/kg; SAR(10 g) = 0.177 W/kg**

Maximum value of SAR (measured) = 1.04 W/kg



0 dB = 1.04 W/kg = 0.17 dBW/kg

Test Laboratory: HUAWEI SAR/HAC Lab

### CMR-AL09 GSM1900 GPRS 2TS 661CH Top Side 0mm

**DUT: CMR-AL09; Type: Tablet; Serial: SAR4**

Communication System: UID 0, HW-GSM\GPRS\EGPRS-2TS (0); Frequency: 1880 MHz; Duty Cycle: 1:4.10015

Medium parameters used:  $f = 1880$  MHz;  $\sigma = 1.565$  S/m;  $\epsilon_r = 52.685$ ;  $\rho = 1000$  kg/m<sup>3</sup>

Phantom section: Flat Section

DASY Configuration:

- ε Probe: EX3DV4 - SN3743; ConvF(7.65, 7.65, 7.65); Calibrated: 2017/11/23;
- ε Sensor-Surface: 1.4mm (Mechanical Surface Detection),  $z = -9.0, 31.0$
- ε Electronics: DAE4 Sn1235; Calibrated: 2017/11/16
- ε Phantom: ELI v4.0; Type: QDOVA001BB; Serial: TP:1110
- ε DASY52 52.8.8(1222); SEMCAD X 14.6.10(7373)

**Configuration/Body/Area Scan (6x21x1):** Measurement grid:  $dx=15$ mm,  $dy=15$ mm

Maximum value of SAR (measured) = 1.16 W/kg

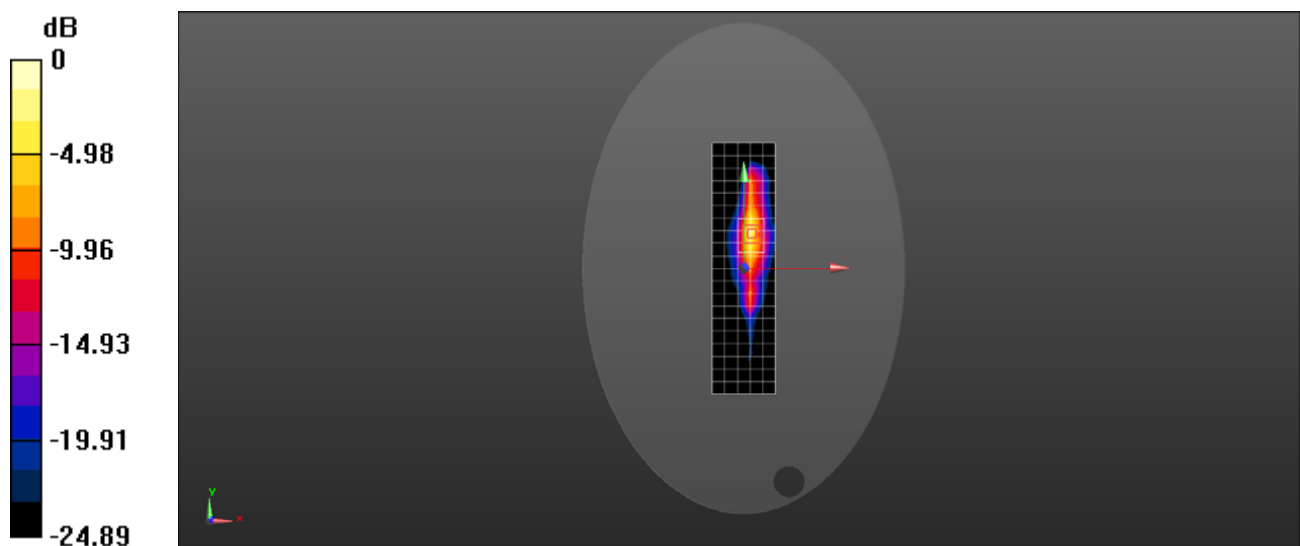
**Configuration/Body/Zoom Scan (5x6x7)/Cube 0:** Measurement grid:  $dx=8$ mm,  $dy=8$ mm,  $dz=5$ mm

Reference Value = 7.376 V/m; Power Drift = -0.18 dB

Peak SAR (extrapolated) = 1.81 W/kg

**SAR(1 g) = 0.673 W/kg; SAR(10 g) = 0.264 W/kg**

Maximum value of SAR (measured) = 1.49 W/kg



0 dB = 1.49 W/kg = 1.74 dBW/kg

Test Laboratory: HUAWEI SAR/HAC Lab

### CMR-AL19 UMTS Band 2 9400CH Back Side 0mm

**DUT: CMR-AL09; Type: Tablet; Serial: SAR3**

Communication System: UID 0, HW-UMTS-FDD(WCDMA) (0); Frequency: 1880 MHz; Duty Cycle: 1:1

Medium parameters used:  $f = 1880$  MHz;  $\sigma = 1.51$  S/m;  $\epsilon_r = 54.653$ ;  $\rho = 1000$  kg/m<sup>3</sup>

Phantom section: Flat Section

DASY Configuration:

- ε Probe: EX3DV4 - SN7381; ConvF(8.29, 8.29, 8.29); Calibrated: 2017/10/24;
- ε Sensor-Surface: 1.4mm (Mechanical Surface Detection),  $z = 1.0, 31.0$
- ε Electronics: DAE4 Sn1492; Calibrated: 2017/9/25
- ε Phantom: SMA6; Type: QD000P40CD; Serial: TP:1892
- ε DASY52 52.8.8(1222); SEMCAD X 14.6.10(7373)

**Configuration/Body/Area Scan (10x17x1):** Measurement grid:  $dx=15$ mm,  $dy=15$ mm

Maximum value of SAR (measured) = 0.544 W/kg

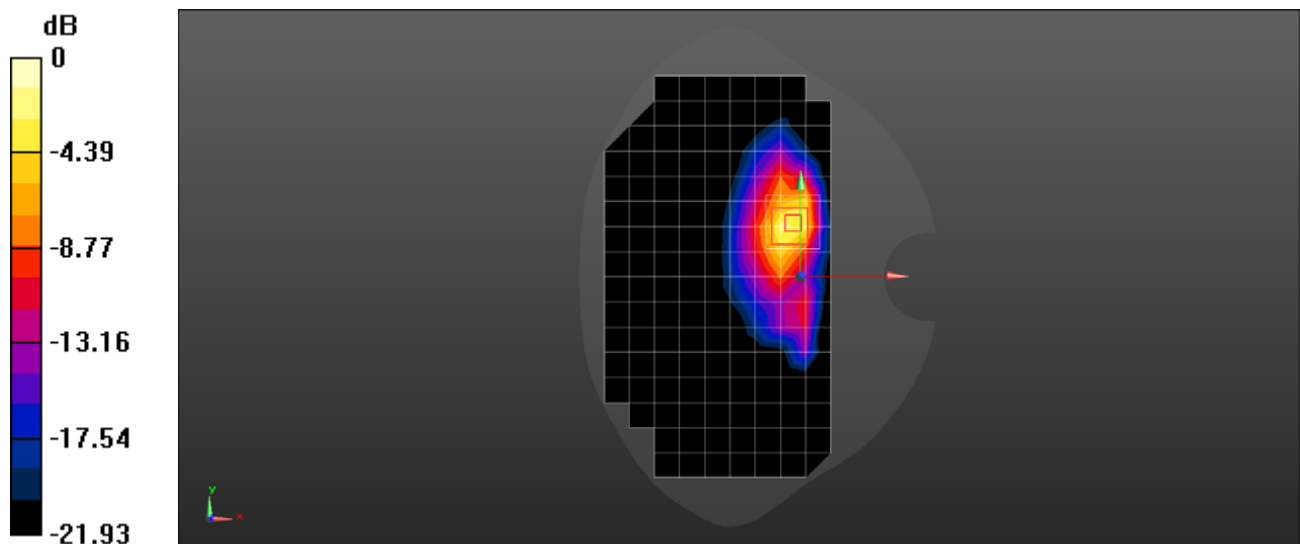
**Configuration/Body/Zoom Scan (5x5x7)/Cube 0:** Measurement grid:  $dx=8$ mm,  $dy=8$ mm,  $dz=5$ mm

Reference Value = 8.302 V/m; Power Drift = -0.01 dB

Peak SAR (extrapolated) = 1.17 W/kg

**SAR(1 g) = 0.496 W/kg; SAR(10 g) = 0.225 W/kg**

Maximum value of SAR (measured) = 0.933 W/kg



0 dB = 0.933 W/kg = -0.30 dBW/kg

Test Laboratory: HUAWEI SAR/HAC Lab

## CMR-AL09 UMTS Band 5 4182CH Top Side 0mm

**DUT: CMR-AL09; Type: Tablet; Serial: SAR4**

Communication System: UID 0, HW-UMTS-FDD(WCDMA) (0); Frequency: 836.4 MHz; Duty Cycle: 1:1

Medium parameters used (interpolated):  $f = 836.4$  MHz;  $\sigma = 1$  S/m;  $\epsilon_r = 53.421$ ;  $\rho = 1000$  kg/m<sup>3</sup>

Phantom section: Flat Section

DASY Configuration:

- ε Probe: EX3DV4 - SN3743; ConvF(9.4, 9.4, 9.4); Calibrated: 2017/11/23;
- ε Sensor-Surface: 1.4mm (Mechanical Surface Detection),  $z = -9.0, 31.0$
- ε Electronics: DAE4 Sn1235; Calibrated: 2017/11/16
- ε Phantom: ELI v4.0; Type: QDOVA001BB; Serial: TP:1110
- ε DASY52 52.8.8(1222); SEMCAD X 14.6.10(7373)

**Configuration/Body/Area Scan (6x21x1):** Measurement grid:  $dx=15$ mm,  $dy=15$ mm

[Info: Interpolated medium parameters used for SAR evaluation.](#)

Maximum value of SAR (measured) = 0.539 W/kg

**Configuration/Body/Zoom Scan (5x6x7)/Cube 0:** Measurement grid:  $dx=8$ mm,  $dy=8$ mm,  $dz=5$ mm

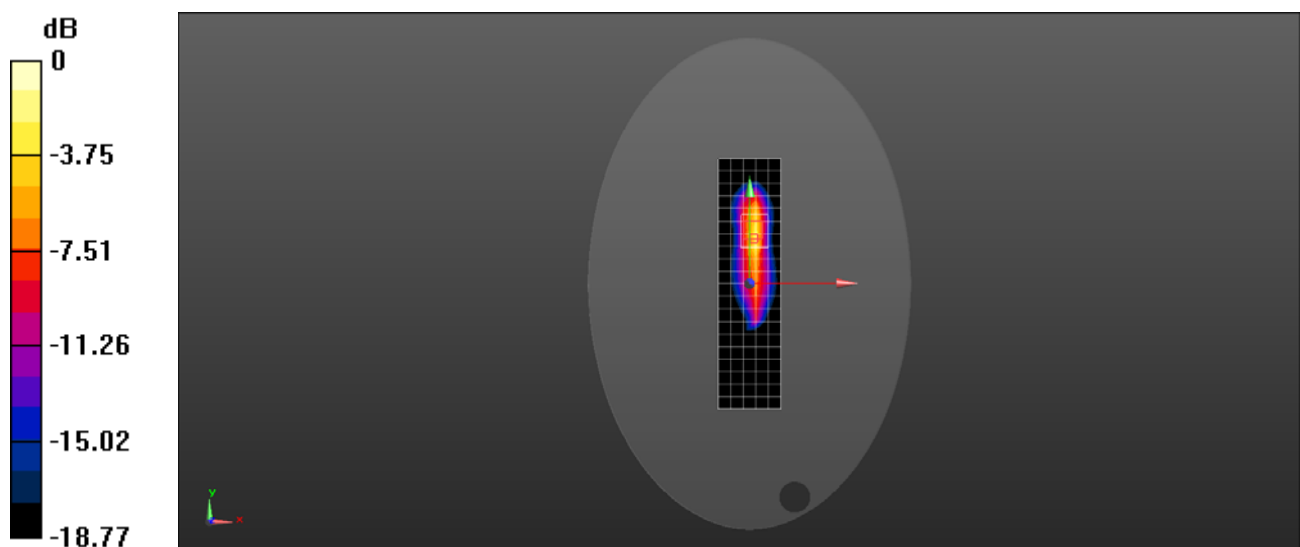
Reference Value = 10.95 V/m; Power Drift = -0.07 dB

Peak SAR (extrapolated) = 1.20 W/kg

**SAR(1 g) = 0.381 W/kg; SAR(10 g) = 0.175 W/kg**

[Info: Interpolated medium parameters used for SAR evaluation.](#)

Maximum value of SAR (measured) = 0.931 W/kg



0 dB = 0.931 W/kg = -0.31 dBW/kg

Test Laboratory: HUAWEI SAR/HAC Lab

### CMR-AL09 LTE Band 4 20M QPSK 1RB 0 offset 20300CH Back Side 0mm

**DUT: CMR-AL09; Type: Tablet; Serial: SAR3**

Communication System: UID 0, LTE-FDD (SC-FDMA, 20MHz, QPSK/16-QAM) (0); Frequency: 1745 MHz; Duty Cycle: 1:1

Medium parameters used:  $f = 1745$  MHz;  $\sigma = 1.423$  S/m;  $\epsilon_r = 53.83$ ;  $\rho = 1000$  kg/m<sup>3</sup>

Phantom section: Flat Section

DASY Configuration:

- ε Probe: EX3DV4 - SN7381; ConvF(8.74, 8.74, 8.74); Calibrated: 2017/10/24;
- ε Sensor-Surface: 1.4mm (Mechanical Surface Detection),  $z = 1.0, 31.0$
- ε Electronics: DAE4 Sn1492; Calibrated: 2017/9/25
- ε Phantom: SMA6; Type: QD000P40CD; Serial: TP:1892
- ε DASY52 52.8.8(1222); SEMCAD X 14.6.10(7373)

**Configuration/Body/Area Scan (9x17x1):** Measurement grid:  $dx=15$ mm,  $dy=15$ mm

Maximum value of SAR (measured) = 0.281 W/kg

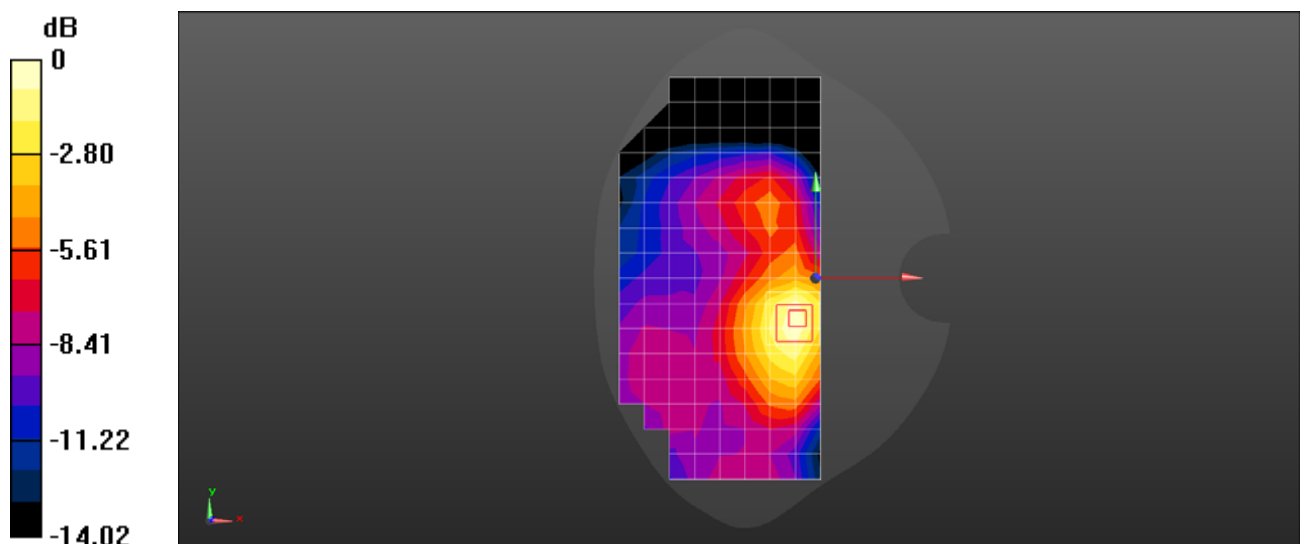
**Configuration/Body/Zoom Scan (5x5x7)/Cube 0:** Measurement grid:  $dx=8$ mm,  $dy=8$ mm,  $dz=5$ mm

Reference Value = 8.488 V/m; Power Drift = -0.05 dB

Peak SAR (extrapolated) = 0.335 W/kg

**SAR(1 g) = 0.210 W/kg; SAR(10 g) = 0.129 W/kg**

Maximum value of SAR (measured) = 0.285 W/kg



0 dB = 0.285 W/kg = -5.45 dBW/kg

Test Laboratory: HUAWEI SAR/HAC Lab

**CMR-AL09 LTE Band 5 10M QPSK 1RB 25 offset 20600CH Back Side 0mm**

**DUT: CMR-AL09; Type: Tablet; Serial: SAR3**

Communication System: UID 0, LTE-FDD (SC-FDMA, 10MHz, QPSK/16-QAM) (0); Frequency: 844 MHz; Duty Cycle: 1:1

Medium parameters used:  $f = 844 \text{ MHz}$ ;  $\sigma = 0.945 \text{ S/m}$ ;  $\epsilon_r = 55.654$ ;  $\rho = 1000 \text{ kg/m}^3$

Phantom section: Flat Section

DASY Configuration:

- ε Probe: EX3DV4 - SN7381; ConvF(10.37, 10.37, 10.37); Calibrated: 2017/10/24;
- ε Sensor-Surface: 1.4mm (Mechanical Surface Detection),  $z = 1.0, 31.0$
- ε Electronics: DAE4 Sn1492; Calibrated: 2017/9/25
- ε Phantom: SMA6; Type: QD000P40CD; Serial: TP:1892
- ε DASY52 52.8.8(1222); SEMCAD X 14.6.10(7373)

**Configuration/Body/Area Scan (9x17x1):** Measurement grid:  $dx=15\text{mm}$ ,  $dy=15\text{mm}$

Maximum value of SAR (measured) = 0.975 W/kg

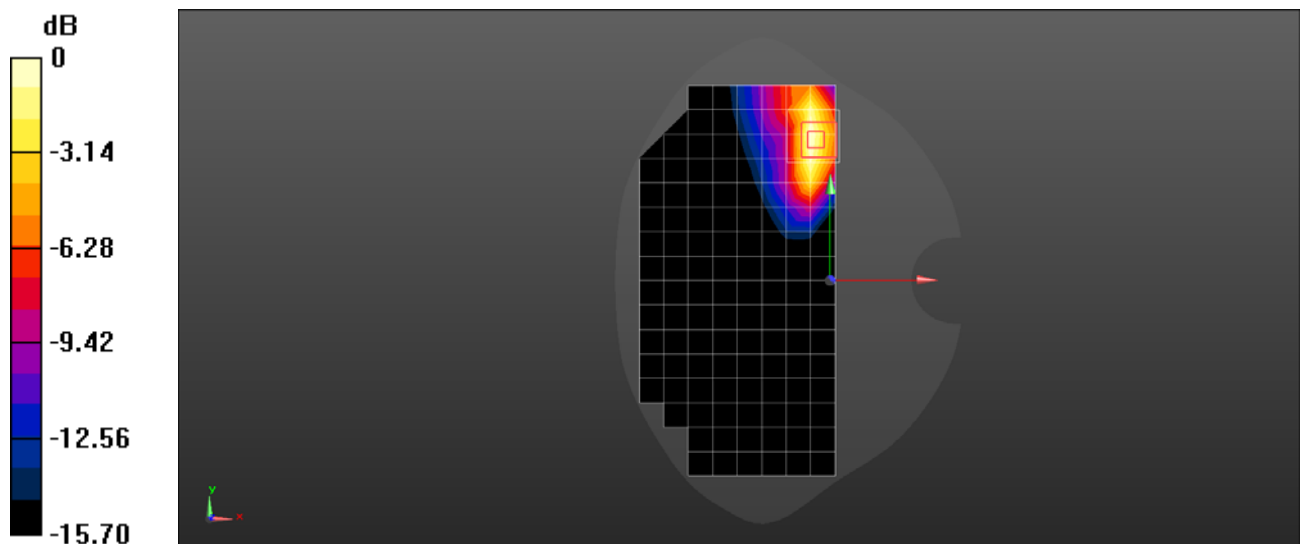
**Configuration/Body/Zoom Scan (5x5x7)/Cube 0:** Measurement grid:  $dx=8\text{mm}$ ,  $dy=8\text{mm}$ ,  $dz=5\text{mm}$

Reference Value = 2.893 V/m; Power Drift = -0.06 dB

Peak SAR (extrapolated) = 1.16 W/kg

**SAR(1 g) = 0.559 W/kg; SAR(10 g) = 0.291 W/kg**

Maximum value of SAR (measured) = 0.968 W/kg



0 dB = 0.968 W/kg = -0.14 dBW/kg

Test Laboratory: HUAWEI SAR/HAC Lab

### CMR-AL09 LTE Band 7 20M QPSK 1RB 50 offset 21350CH Top Side 17mm

**DUT: CMR-AL09; Type: Tablet; Serial: SAR3**

Communication System: UID 0, LTE-FDD (SC-FDMA, 20MHz, QPSK/16-QAM) (0); Frequency: 2560 MHz; Duty Cycle: 1:1

Medium parameters used:  $f = 2560$  MHz;  $\sigma = 2.04$  S/m;  $\epsilon_r = 51.963$ ;  $\rho = 1000$  kg/m<sup>3</sup>

Phantom section: Flat Section

DASY Configuration:

- ε Probe: EX3DV4 - SN7381; ConvF(7.73, 7.73, 7.73); Calibrated: 2017/10/24;
- ε Sensor-Surface: 1.4mm (Mechanical Surface Detection),  $z = 1.0, 31.0$
- ε Electronics: DAE4 Sn1492; Calibrated: 2017/9/25
- ε Phantom: SMA6; Type: QD000P40CD; Serial: TP:1892
- ε DASY52 52.8.8(1222); SEMCAD X 14.6.10(7373)

**Configuration/Body/Area Scan (7x20x1):** Measurement grid:  $dx=12$ mm,  $dy=12$ mm

Maximum value of SAR (measured) = 0.904 W/kg

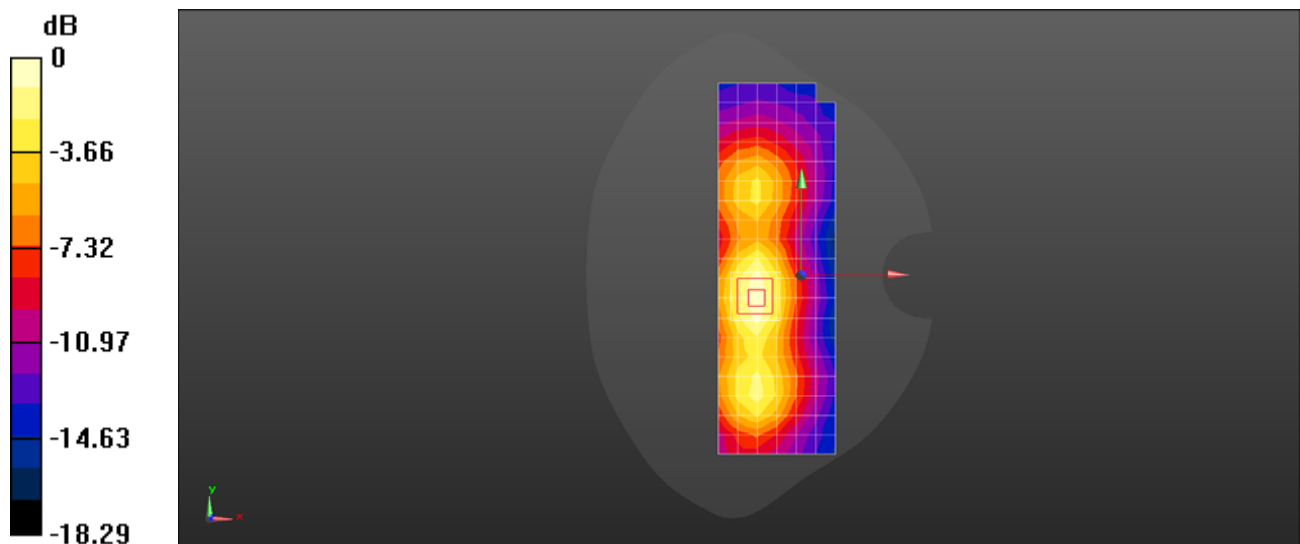
**Configuration/Body/Zoom Scan (7x7x7)/Cube 0:** Measurement grid:  $dx=5$ mm,  $dy=5$ mm,  $dz=5$ mm

Reference Value = 15.93 V/m; Power Drift = -0.05 dB

Peak SAR (extrapolated) = 1.08 W/kg

**SAR(1 g) = 0.594 W/kg; SAR(10 g) = 0.324 W/kg**

Maximum value of SAR (measured) = 0.895 W/kg



0 dB = 0.895 W/kg = -0.48 dBW/kg



Test Laboratory: HUAWEI SAR/HAC Lab

**CMR-AL09 LTE Band 12 10M QPSK 1RB 25 offset 23130CH Back Side 0mm**

**DUT: CMR-AL09; Type: Tablet; Serial: SAR3**

Communication System: UID 0, LTE-FDD (SC-FDMA, 10MHz, QPSK/16-QAM) (0); Frequency: 711 MHz; Duty Cycle: 1:1

Medium parameters used:  $f = 711 \text{ MHz}$ ;  $\sigma = 0.935 \text{ S/m}$ ;  $\epsilon_r = 55.901$ ;  $\rho = 1000 \text{ kg/m}^3$

Phantom section: Flat Section

DASY Configuration:

- ε Probe: EX3DV4 - SN7381; ConvF(10.66, 10.66, 10.66); Calibrated: 2017/10/24;
- ε Sensor-Surface: 1.4mm (Mechanical Surface Detection),  $z = 1.0, 31.0$
- ε Electronics: DAE4 Sn1492; Calibrated: 2017/9/25
- ε Phantom: SMA6; Type: QD000P40CD; Serial: TP:1892
- ε DASY52 52.8.8(1222); SEMCAD X 14.6.10(7373)

**Configuration/Body/Area Scan (9x18x1):** Measurement grid:  $dx=15\text{mm}$ ,  $dy=15\text{mm}$

Maximum value of SAR (measured) = 0.739 W/kg

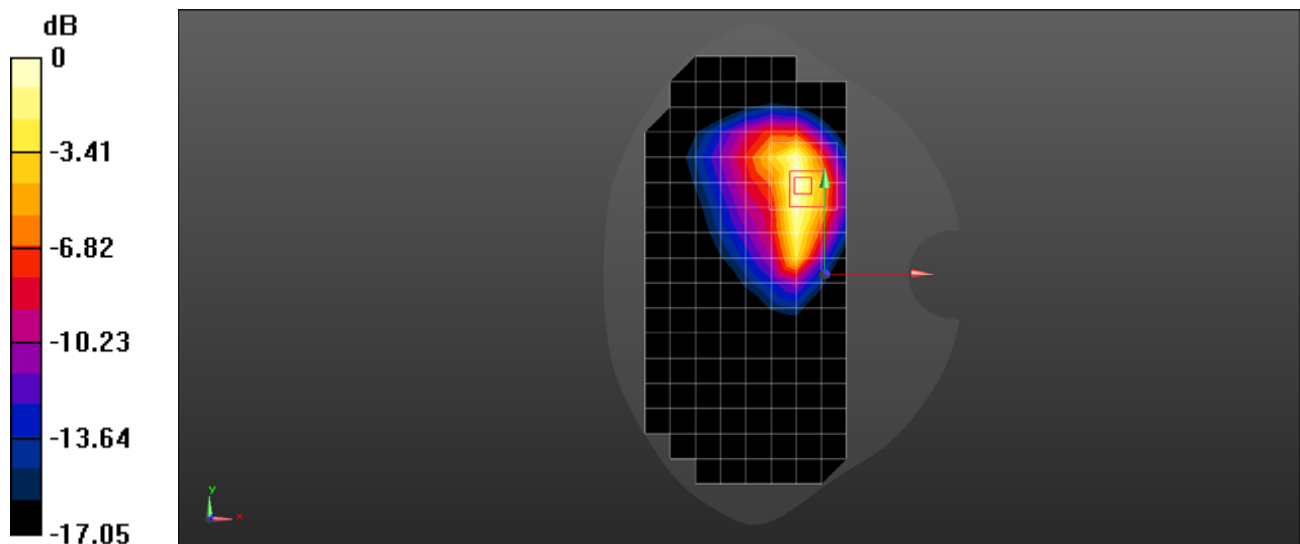
**Configuration/Body/Zoom Scan (6x6x7)/Cube 0:** Measurement grid:  $dx=8\text{mm}$ ,  $dy=8\text{mm}$ ,  $dz=5\text{mm}$

Reference Value = 10.67 V/m; Power Drift = -0.08 dB

Peak SAR (extrapolated) = 1.01 W/kg

**SAR(1 g) = 0.437 W/kg; SAR(10 g) = 0.227 W/kg**

Maximum value of SAR (measured) = 0.720 W/kg



0 dB = 0.720 W/kg = -1.42 dBW/kg

Test Laboratory: HUAWEI SAR/HAC Lab

**CMR-AL09 LTE Band 17 10M QPSK 1RB 25 offset 23790CH Back Side 0mm**

**DUT: CMR-AL09; Type: Tablet; Serial: SAR3**

Communication System: UID 0, LTE-FDD (SC-FDMA, 10MHz, QPSK/16-QAM) (0); Frequency: 710 MHz; Duty Cycle: 1:1

Medium parameters used:  $f = 710 \text{ MHz}$ ;  $\sigma = 0.935 \text{ S/m}$ ;  $\epsilon_r = 55.901$ ;  $\rho = 1000 \text{ kg/m}^3$

Phantom section: Flat Section

DASY Configuration:

- ε Probe: EX3DV4 - SN7381; ConvF(10.66, 10.66, 10.66); Calibrated: 2017/10/24;
- ε Sensor-Surface: 1.4mm (Mechanical Surface Detection),  $z = 1.0, 31.0$
- ε Electronics: DAE4 Sn1492; Calibrated: 2017/9/25
- ε Phantom: SMA6; Type: QD000P40CD; Serial: TP:1892
- ε DASY52 52.8.8(1222); SEMCAD X 14.6.10(7373)

**Configuration/Body/Area Scan (9x18x1):** Measurement grid:  $dx=15\text{mm}$ ,  $dy=15\text{mm}$

Maximum value of SAR (measured) = 0.622 W/kg

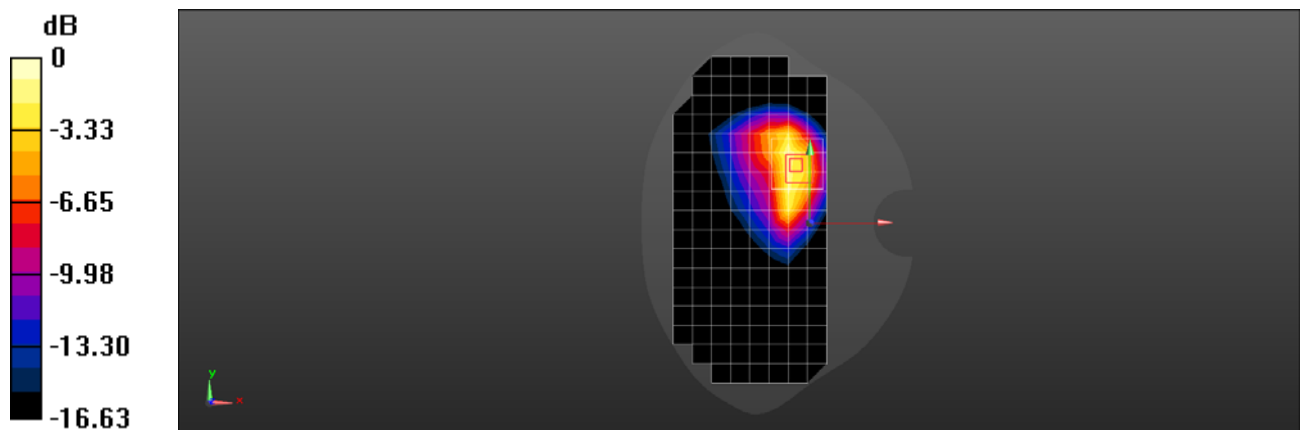
**Configuration/Body/Zoom Scan (6x6x7)/Cube 0:** Measurement grid:  $dx=8\text{mm}$ ,  $dy=8\text{mm}$ ,  $dz=5\text{mm}$

Reference Value = 17.32 V/m; Power Drift = -0.16 dB

Peak SAR (extrapolated) = 1.07 W/kg

**SAR(1 g) = 0.457 W/kg; SAR(10 g) = 0.236 W/kg**

Maximum value of SAR (measured) = 0.802 W/kg



0 dB = 0.802 W/kg = -0.96 dBW/kg

Test Laboratory: HUAWEI SAR/HAC Lab

### CMR-AL09 LTE Band 26 15M QPSK 1RB 38 offset 26965CH Back Side 0mm

**DUT: CMR-AL09; Type: Tablet; Serial: SAR3**

Communication System: UID 0, LTE-FDD (SC-FDMA, 15MHz, QPSK/16-QAM) (0); Frequency: 841.5 MHz; Duty Cycle: 1:1

Medium parameters used (interpolated):  $f = 841.5$  MHz;  $\sigma = 0.937$  S/m;  $\epsilon_r = 55.659$ ;  $\rho = 1000$  kg/m<sup>3</sup>

Phantom section: Flat Section

DASY Configuration:

- ε Probe: EX3DV4 - SN7381; ConvF(10.37, 10.37, 10.37); Calibrated: 2017/10/24;
- ε Sensor-Surface: 1.4mm (Mechanical Surface Detection),  $z = 1.0, 31.0$
- ε Electronics: DAE4 Sn1492; Calibrated: 2017/9/25
- ε Phantom: SMA6; Type: QD000P40CD; Serial: TP:1892
- ε DASY52 52.8.8(1222); SEMCAD X 14.6.10(7373)

**Configuration/Body/Area Scan (10x17x1):** Measurement grid: dx=15mm, dy=15mm

[Info: Interpolated medium parameters used for SAR evaluation.](#)

Maximum value of SAR (measured) = 0.876 W/kg

**Configuration/Body/Zoom Scan (5x5x7)/Cube 0:** Measurement grid: dx=8mm, dy=8mm, dz=5mm

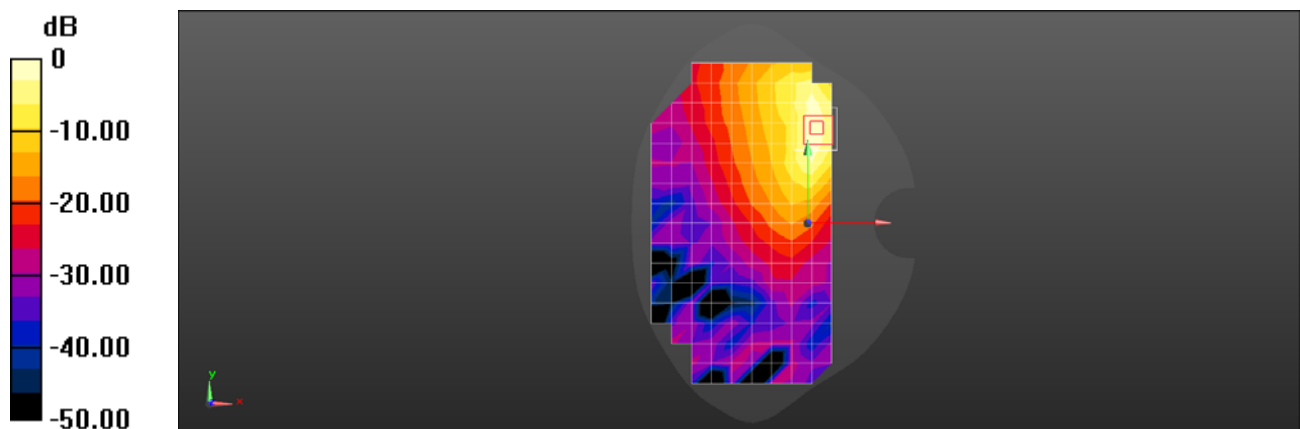
Reference Value = 4.621 V/m; Power Drift = -0.08 dB

Peak SAR (extrapolated) = 1.02 W/kg

**SAR(1 g) = 0.511 W/kg; SAR(10 g) = 0.270 W/kg**

[Info: Interpolated medium parameters used for SAR evaluation.](#)

Maximum value of SAR (measured) = 0.862 W/kg



0 dB = 0.876 W/kg = -0.57 dBW/kg

Test Laboratory: HUAWEI SAR/HAC Lab

**CMR-AL09 LTE Band 38 20M QPSK 1RB 50 offset 37850CH Back Side 0mm**

**DUT: CMR-AL09; Type: Tablet; Serial: SAR3**

Communication System: UID 0, LTE-TDD (SC-FDMA, 20MHz, QPSK/16-QAM) (0); Frequency: 2580 MHz; Duty Cycle: 1:1.57906

Medium parameters used:  $f = 2580$  MHz;  $\sigma = 2.061$  S/m;  $\epsilon_r = 51.908$ ;  $\rho = 1000$  kg/m<sup>3</sup>

Phantom section: Flat Section

DASY Configuration:

- ε Probe: EX3DV4 - SN7381; ConvF(7.73, 7.73, 7.73); Calibrated: 2017/10/24;
- ε Sensor-Surface: 1.4mm (Mechanical Surface Detection),  $z = -9.0, 31.0$
- ε Electronics: DAE4 Sn1492; Calibrated: 2017/9/25
- ε Phantom: SMA6; Type: QD000P40CD; Serial: TP:1892
- ε DASY52 52.8.8(1222); SEMCAD X 14.6.10(7373)

**Configuration/Body/Area Scan (11x21x1):** Measurement grid:  $dx=12$ mm,  $dy=12$ mm

Maximum value of SAR (measured) = 0.413 W/kg

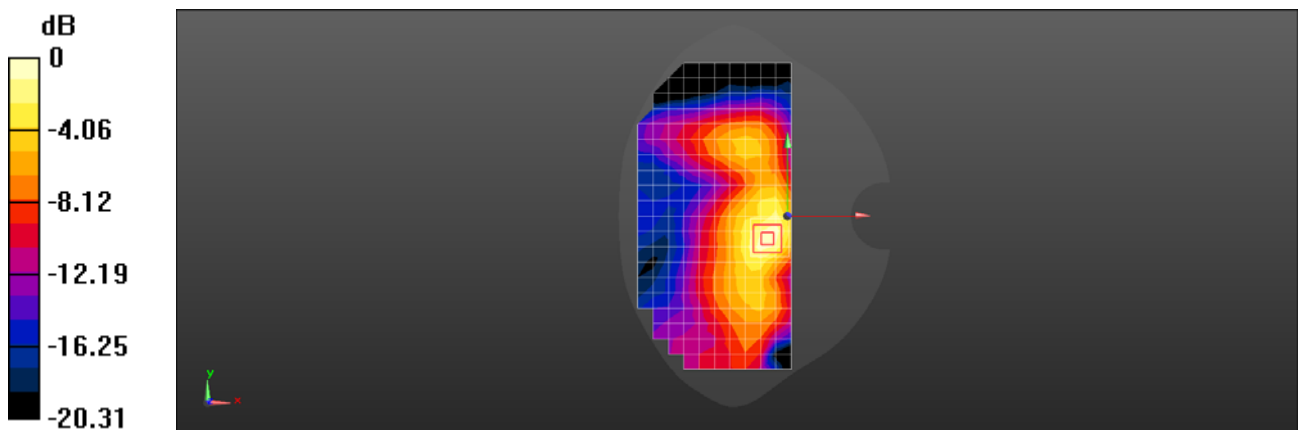
**Configuration/Body/Zoom Scan (7x7x7)/Cube 0:** Measurement grid:  $dx=5$ mm,  $dy=5$ mm,  $dz=5$ mm

Reference Value = 11.34 V/m; Power Drift = -0.11 dB

Peak SAR (extrapolated) = 0.577 W/kg

**SAR(1 g) = 0.297 W/kg; SAR(10 g) = 0.151 W/kg**

Maximum value of SAR (measured) = 0.466 W/kg



0 dB = 0.466 W/kg = -3.32 dBW/kg

Test Laboratory: HUAWEI SAR/HAC Lab

**CMR-AL09 LTE Band 41 20M QPSK 1RB 0 offset 41140CH Top Side 17mm**

**DUT: CMR-AL09; Type: Tablet; Serial: SAR4**

Communication System: UID 0, LTE-TDD (SC-FDMA, 20MHz, QPSK/16-QAM) (0); Frequency: 2645 MHz; Duty Cycle: 1:1.57906

Medium parameters used:  $f = 2645$  MHz;  $\sigma = 2.222$  S/m;  $\epsilon_r = 50.992$ ;  $\rho = 1000$  kg/m<sup>3</sup>

Phantom section: Flat Section

DASY Configuration:

- ε Probe: EX3DV4 - SN3743; ConvF(6.98, 6.98, 6.98); Calibrated: 2017/11/23;
- ε Sensor-Surface: 1.4mm (Mechanical Surface Detection),  $z = 1.0, 31.0$
- ε Electronics: DAE4 Sn1235; Calibrated: 2017/11/16
- ε Phantom: ELI v4.0; Type: QDOVA001BB; Serial: TP:1110
- ε DASY52 52.8.8(1222); SEMCAD X 14.6.10(7373)

**Configuration/Body/Area Scan (7x26x1):** Measurement grid:  $dx=12$ mm,  $dy=12$ mm

Maximum value of SAR (measured) = 0.347 W/kg

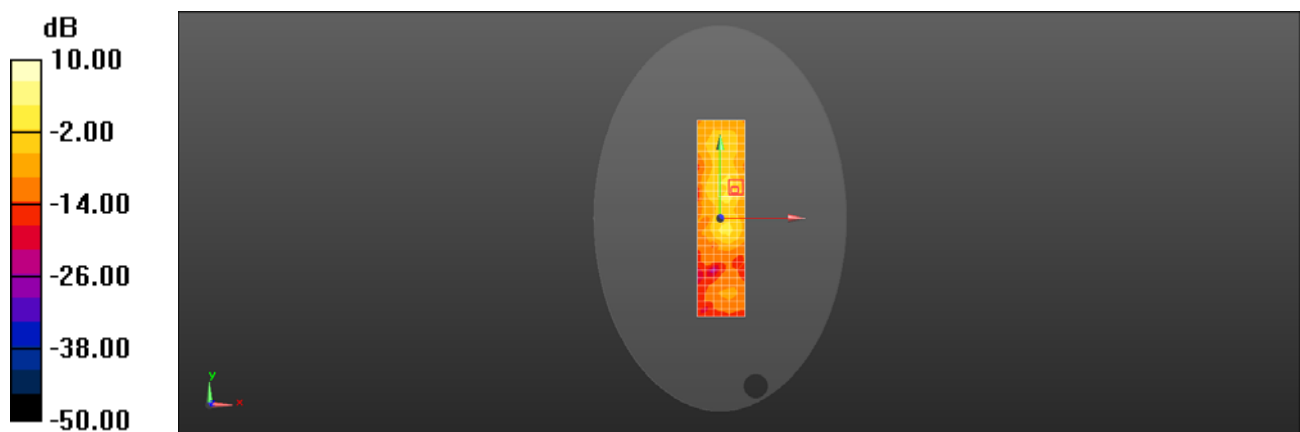
**Configuration/Body/Zoom Scan (9x8x7)/Cube 0:** Measurement grid:  $dx=5$ mm,  $dy=5$ mm,  $dz=5$ mm

Reference Value = 9.533 V/m; Power Drift = -0.00 dB

Peak SAR (extrapolated) = 0.889 W/kg

**SAR(1 g) = 0.231 W/kg; SAR(10 g) = 0.050 W/kg**

Maximum value of SAR (measured) = 0.331 W/kg



0 dB = 0.331 W/kg = -4.80 dBW/kg

Test Laboratory: HUAWEI SAR/HAC Lab

### CMR-AL09 WiFi 2.4G 802.11b 6CH Top Side 0mm

**DUT: CMR-AL09; Type: Tablet; Serial: SAR4**

Communication System: UID 0, WiFi(802.11a/b/g/n) (0); Frequency: 2437 MHz;Duty Cycle: 1:1  
Medium parameters used:  $f = 2437$  MHz;  $\sigma = 1.98$  S/m;  $\epsilon_r = 51.827$ ;  $\rho = 1000$  kg/m<sup>3</sup>

Phantom section: Flat Section

DASY Configuration:

- ε Probe: EX3DV4 - SN3743; ConvF(7.34, 7.34, 7.34); Calibrated: 2017/11/23;
- ε Sensor-Surface: 1.4mm (Mechanical Surface Detection),  $z = -9.0, 31.0$
- ε Electronics: DAE4 Sn1235; Calibrated: 2017/11/16
- ε Phantom: ELI v4.0; Type: QDOVA001BB; Serial: TP:1110
- ε DASY52 52.8.8(1222); SEMCAD X 14.6.10(7373)

**Configuration/Body/Area Scan (5x26x1):** Measurement grid:  $dx=12$ mm,  $dy=12$ mm  
Maximum value of SAR (measured) = 0.245 W/kg

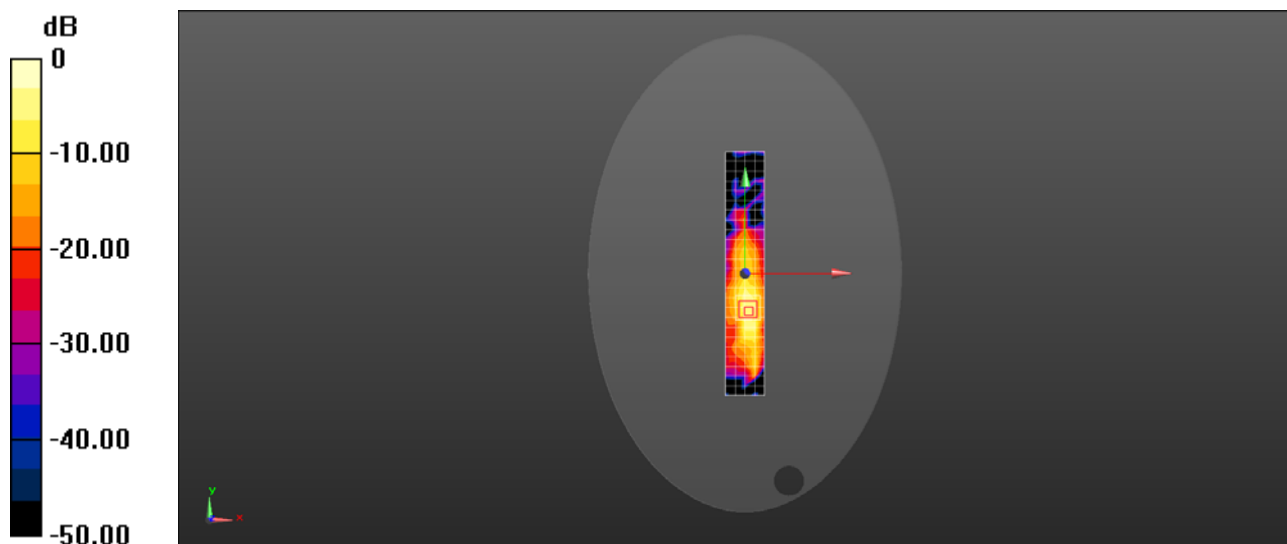
**Configuration/Body/Zoom Scan (7x7x7)/Cube 0:** Measurement grid:  $dx=5$ mm,  $dy=5$ mm,  $dz=5$ mm

Reference Value = 5.652 V/m; Power Drift = -0.17 dB

Peak SAR (extrapolated) = 0.776 W/kg

**SAR(1 g) = 0.234 W/kg; SAR(10 g) = 0.084 W/kg**

Maximum value of SAR (measured) = 0.527 W/kg



0 dB = 0.527 W/kg = -2.79 dBW/kg

Test Laboratory: HUAWEI SAR/HAC Lab

### CMR-AL09 WiFi 5G 802.11ac 58CH Top Side 0mm

**DUT: CMR-AL09; Type: Tablet; Serial: SAR4**

Communication System: UID 0, WiFi(802.11a/b/g/n) (0); Frequency: 5290 MHz;Duty Cycle: 1:1  
Medium parameters used:  $f = 5290$  MHz;  $\sigma = 5.433$  S/m;  $\epsilon_r = 46.832$ ;  $\rho = 1000$  kg/m<sup>3</sup>

Phantom section: Flat Section

DASY Configuration:

- ε Probe: EX3DV4 - SN3743; ConvF(4.85, 4.85, 4.85); Calibrated: 2017/11/23;
- ε Sensor-Surface: 1.4mm (Mechanical Surface Detection),  $z = -9.0, 25.0$
- ε Electronics: DAE4 Sn1235; Calibrated: 2017/11/16
- ε Phantom: ELI v4.0; Type: QDOVA001BB; Serial: TP:1110
- ε DASY52 52.8.8(1222); SEMCAD X 14.6.10(7373)

**Configuration/Body/Area Scan (6x31x1):** Measurement grid:  $dx=10$ mm,  $dy=10$ mm  
Maximum value of SAR (measured) = 0.349 W/kg

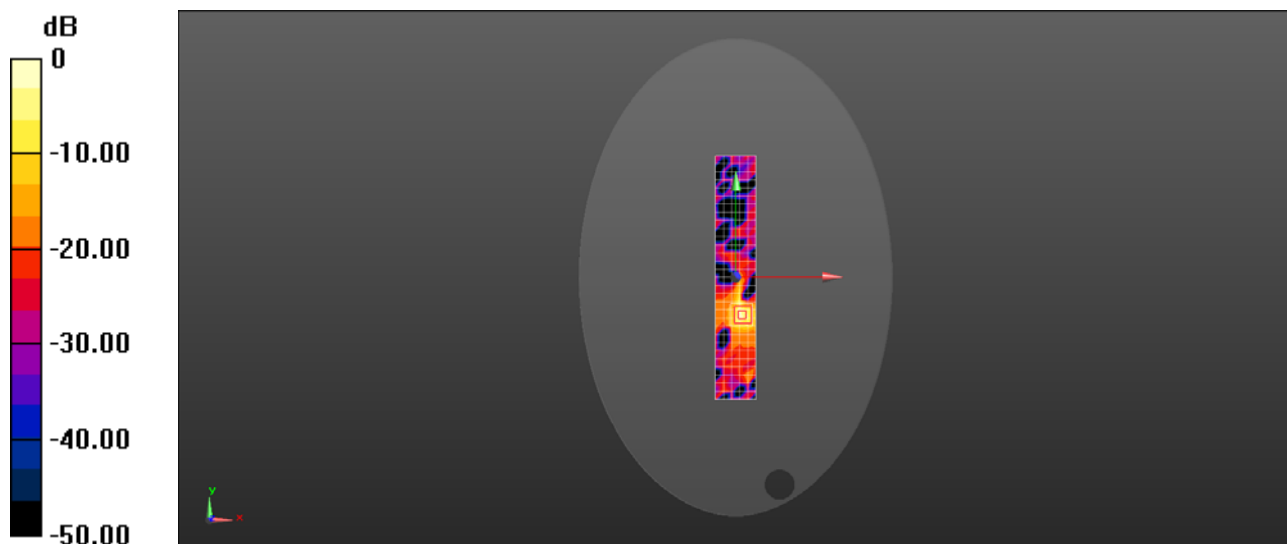
**Configuration/Body/Zoom Scan (8x8x7)/Cube 0:** Measurement grid:  $dx=4$ mm,  $dy=4$ mm,  $dz=1.4$ mm

Reference Value = 1.663 V/m; Power Drift = -0.02 dB

Peak SAR (extrapolated) = 1.21 W/kg

**SAR(1 g) = 0.162 W/kg; SAR(10 g) = 0.034 W/kg**

Maximum value of SAR (measured) = 0.495 W/kg



0 dB = 0.495 W/kg = -3.05 dBW/kg

Test Laboratory: HUAWEI SAR/HAC Lab

### CMR-AL09 BT 2450 BLE 19CH Top Side 0mm

**DUT: CMR-AL09; Type: Tablet; Serial: SAR4**

Communication System: UID 0, BT (0); Frequency: 2440 MHz; Duty Cycle: 1:1

Medium parameters used:  $f = 2440$  MHz;  $\sigma = 2.021$  S/m;  $\epsilon_r = 51.057$ ;  $\rho = 1000$  kg/m<sup>3</sup>

Phantom section: Flat Section

DASY Configuration:

- ε Probe: EX3DV4 - SN3743; ConvF(7.34, 7.34, 7.34); Calibrated: 2017/11/23;
- ε Sensor-Surface: 1.4mm (Mechanical Surface Detection),  $z = -9.0, 31.0$
- ε Electronics: DAE4 Sn1235; Calibrated: 2017/11/16
- ε Phantom: ELI v4.0; Type: QDOVA001BB; Serial: TP:1110
- ε DASY52 52.8.8(1222); SEMCAD X 14.6.10(7373)

**Configuration/Body/Area Scan (7x26x1):** Measurement grid:  $dx=12$ mm,  $dy=12$ mm

Maximum value of SAR (measured) = 0.105 W/kg

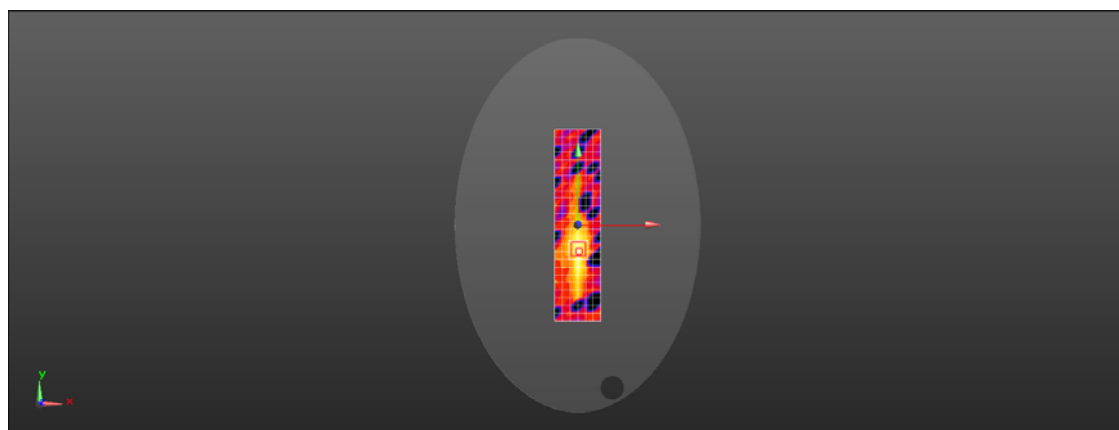
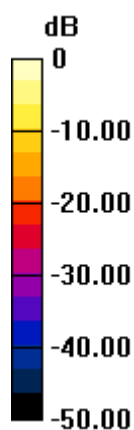
**Configuration/Body/Zoom Scan (7x7x7)/Cube 0:** Measurement grid:  $dx=5$ mm,  $dy=5$ mm,  $dz=5$ mm

Reference Value = 2.585 V/m; Power Drift = 0.05 dB

Peak SAR (extrapolated) = 0.192 W/kg

**SAR(1 g) = 0.053 W/kg; SAR(10 g) = 0.019 W/kg**

Maximum value of SAR (measured) = 0.131 W/kg



0 dB = 0.131 W/kg = -8.82 dBW/kg