



Appendix A. System Check Plots

Table of contents
SystemPerformanceCheck-D2450-EX-Body

Test Laboratory: HUAWEI SAR/HAC Lab

SystemPerformanceCheck-D2450-EX-Head

DUT: Dipole 2450 MHz D2450V2; Type: D2450V2; Serial: D2450V2 - SN:860

Communication System: UID 0, CW; Frequency: 2450 MHz; Duty Cycle: 1:1

Medium parameters used: $f = 2450$ MHz; $\sigma = 2.025$ S/m; $\epsilon_r = 50.856$; $\rho = 1000$ kg/m³

Phantom section: Flat Section

DASY Configuration:

- ε Probe: EX3DV4 - SN3744; ConvF(6.99, 6.99, 6.99); Calibrated: 2016-7-26;
- ε Sensor-Surface: 3mm (Mechanical Surface Detection), $z = 1.0, 31.0$
- ε Electronics: DAE4 Sn1236; Calibrated: 2016-11-22
- ε Phantom: SAM4; Type: SAM; Serial: TP-1620
- ε DASY52 52.8.8(1258); SEMCAD X 14.6.10(7331)

Configuration/d=10mm, Pin=250mW/Area Scan (6x11x1): Measurement grid: $dx=12$ mm, $dy=12$ mm

Maximum value of SAR (measured) = 13.4 W/kg

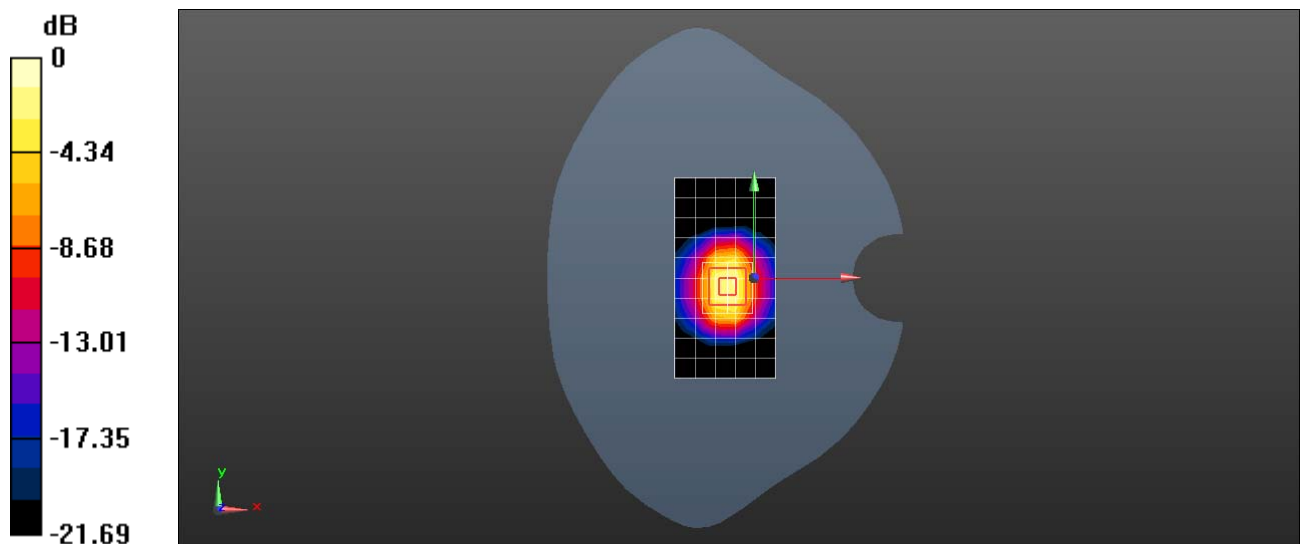
Configuration/d=10mm, Pin=250mW/Zoom Scan (7x7x7)/Cube 0: Measurement grid: $dx=5$ mm, $dy=5$ mm, $dz=5$ mm

Reference Value = 92.31 V/m; Power Drift = -0.14 dB

Peak SAR (extrapolated) = 27.7 W/kg

SAR(1 g) = 13.4 W/kg; SAR(10 g) = 6.18 W/kg

Maximum value of SAR (measured) = 17.9 W/kg



0 dB = 17.9 W/kg = 12.53 dBW/kg