

# Appendix A

## Detailed System Validation Results

1. System Performance Check for Head and Body
System Performance Check 750 MHz Head
System Performance Check 750 MHz Body
System Performance Check 835 MHz Head
System Performance Check 835 MHz Body
System Performance Check 1750 MHz Head
System Performance Check 1750 MHz Body
System Performance Check 1900 MHz Head
System Performance Check 1900 MHz Body
System Performance Check 2450 MHz Head
System Performance Check 2450 MHz Body
System Performance Check 2600 MHz Head
System Performance Check 2600 MHz Body
System Performance Check 5250 MHz Head
System Performance Check 5250 MHz Body
System Performance Check 5600 MHz Head
System Performance Check 5600 MHz Body
System Performance Check 5750 MHz Head
System Performance Check 5750 MHz Body

Unless otherwise stated the results shown in this test report refer only to the sample(s) tested and such sample(s) are retained for 90 days only.

除非另有說明，此報告結果僅對測試之樣品負責，同時此樣品僅保留90天。本報告未經本公司書面許可，不可部份複製。

This document is issued by the Company subject to its General Conditions of Service printed overleaf, available on request or accessible at [www.sgs.com/terms\\_and\\_conditions.htm](http://www.sgs.com/terms_and_conditions.htm) and, for electronic format documents, subject to Terms and Conditions for Electronic Documents at [www.sgs.com/terms\\_e-document.htm](http://www.sgs.com/terms_e-document.htm). Attention is drawn to the limitation of liability, indemnification and jurisdiction issues defined therein. Any holder of this document is advised that information contained hereon reflects the Company's findings at the time of its intervention only and within the limits of Client's instructions, if any. The Company's sole responsibility is to its Client and this document does not exonerate parties to a transaction from exercising all their rights and obligations under the transaction documents. This document cannot be reproduced except in full, without prior written approval of the Company. Any unauthorized alteration, forgery or falsification of the content or appearance of this document is unlawful and offenders may be prosecuted to the fullest extent of the law.

Test Laboratory: SGS-SAR Lab

## System Performance Check 750 MHz Head

**DUT: D750V3; Type: D750V3; Serial: 1160**

Communication System: UID 0, CW (0); Frequency: 750 MHz; Duty Cycle: 1:1

Medium: HSL750; Medium parameters used:  $f = 750$  MHz;  $\sigma = 0.895$  S/m;  $\epsilon_r = 41.649$ ;  $\rho = 1000$  kg/m<sup>3</sup>

Phantom section: Flat Section

DASY 5 Configuration:

- Probe: EX3DV4 - SN3962; ConvF(9.94, 9.94, 9.94); Calibrated: 2016-12-19;
- Sensor-Surface: 2mm (Mechanical Surface Detection),  $z = -2.0, 31.0$
- Electronics: DAE4 Sn1267; Calibrated: 2017-02-23
- Phantom: SAM 1; Type: SAM V4.0; Serial: TP-1283
- DASY52 52.8.8(1222); SEMCAD X 14.6.10(7331)

**Body/d=15mm, Pin=250mW/Area Scan (7x13x1):** Measurement grid:  $dx=15$ mm,  $dy=15$ mm

Maximum value of SAR (measured) = 2.12 W/kg

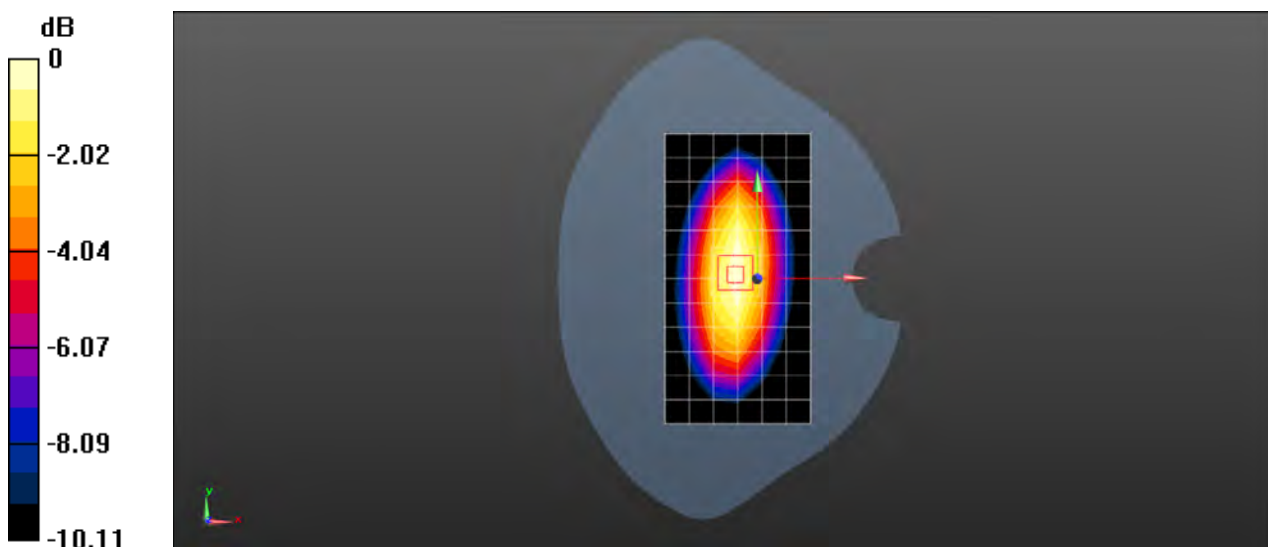
**Body/d=15mm, Pin=250mW/Zoom Scan (7x7x7) (7x7x7)/Cube 0:** Measurement grid:  $dx=5$ mm,  $dy=5$ mm,  $dz=5$ mm

Reference Value = 48.68 V/m; Power Drift = -0.08 dB

Peak SAR (extrapolated) = 3.00 W/kg

**SAR(1 g) = 1.99 W/kg; SAR(10 g) = 1.31 W/kg**

Maximum value of SAR (measured) = 2.14 W/kg



0 dB = 2.14 W/kg = 3.30 dBW/kg

Test Laboratory: SGS-SAR Lab

## System Performance Check 750 MHz Head

**DUT: D750V3; Type: D750V3; Serial: 1160**

Communication System: UID 0, CW (0); Frequency: 750 MHz; Duty Cycle: 1:1

Medium: HSL750; Medium parameters used:  $f = 750$  MHz;  $\sigma = 0.898$  S/m;  $\epsilon_r = 41.66$ ;  $\rho = 1000$  kg/m<sup>3</sup>

Phantom section: Flat Section

DASY 5 Configuration:

- Probe: EX3DV4 - SN3962; ConvF(9.94, 9.94, 9.94); Calibrated: 2016-12-19;
- Sensor-Surface: 2mm (Mechanical Surface Detection),  $z = -2.0, 31.0$
- Electronics: DAE4 Sn1267; Calibrated: 2017-02-23
- Phantom: SAM 1; Type: SAM V4.0; Serial: TP-1283
- DASY52 52.8.8(1222); SEMCAD X 14.6.10(7331)

**Body/d=15mm, Pin=250mW/Area Scan (7x13x1):** Measurement grid:  $dx=15$ mm,  $dy=15$ mm

Maximum value of SAR (measured) = 2.13 W/kg

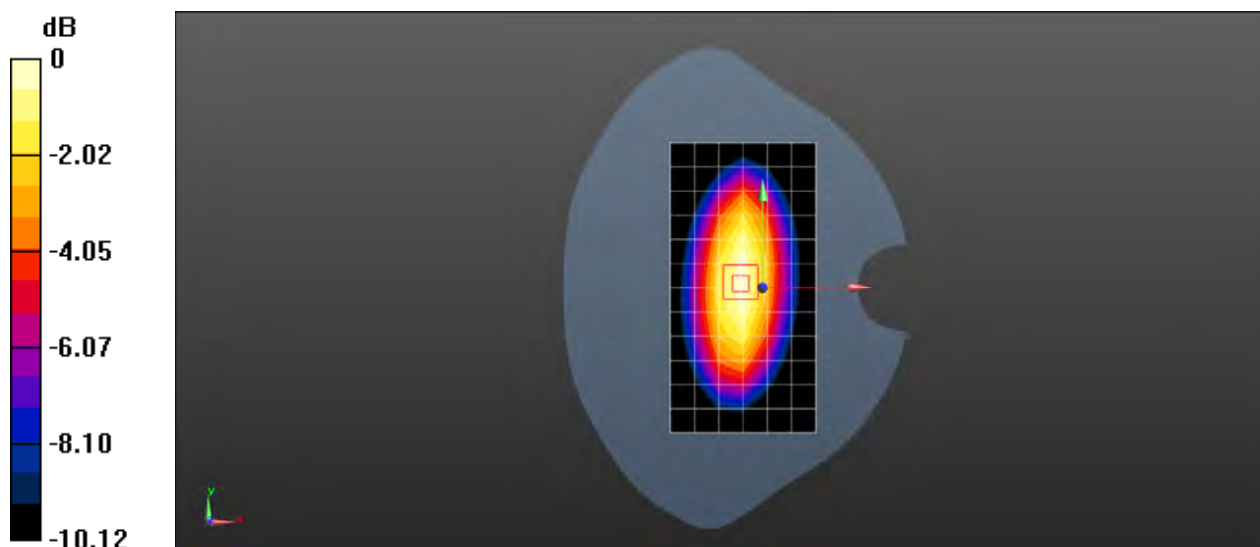
**Body/d=15mm, Pin=250mW/Zoom Scan (7x7x7) (7x7x7)/Cube 0:** Measurement grid:  $dx=5$ mm,  $dy=5$ mm,  $dz=5$ mm

Reference Value = 48.68 V/m; Power Drift = -0.08 dB

Peak SAR (extrapolated) = 3.01 W/kg

**SAR(1 g) = 2 W/kg; SAR(10 g) = 1.32 W/kg**

Maximum value of SAR (measured) = 2.15 W/kg



0 dB = 2.15 W/kg = 3.32 dBW/kg

Test Laboratory: SGS-SAR Lab

## System Performance Check 750 MHz Body

**DUT: D750V3; Type: D750V3; Serial: 1160**

Communication System: UID 0, CW (0); Frequency: 750 MHz; Duty Cycle: 1:1

Medium: MSL750; Medium parameters used:  $f = 750$  MHz;  $\sigma = 0.96$  S/m;  $\epsilon_r = 56.833$ ;  $\rho = 1000$  kg/m<sup>3</sup>

Phantom section: Flat Section

DASY 5 Configuration:

- Probe: EX3DV4 - SN3962; ConvF(10.08, 10.08, 10.08); Calibrated: 2016-12-19;
- Sensor-Surface: 2mm (Mechanical Surface Detection),  $z = -2.0, 31.0$
- Electronics: DAE4 Sn1267; Calibrated: 2017-02-23
- Phantom: SAM 1; Type: SAM V4.0; Serial: TP-1283
- DASY52 52.8.8(1222); SEMCAD X 14.6.10(7331)

**Body/d=15mm, Pin=250mW/Area Scan (7x13x1):** Measurement grid:  $dx=15$ mm,  $dy=15$ mm

Maximum value of SAR (measured) = 2.66 W/kg

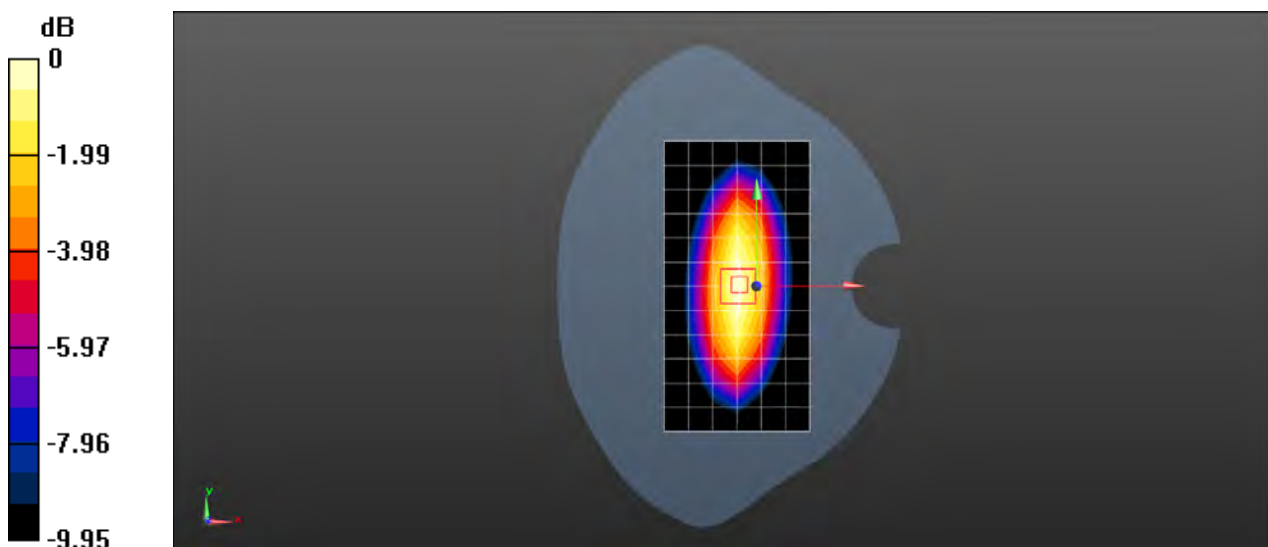
**Body/d=15mm, Pin=250mW/Zoom Scan (7x7x7) (7x7x7)/Cube 0:** Measurement grid:  $dx=5$ mm,  $dy=5$ mm,  $dz=5$ mm

Reference Value = 46.96 V/m; Power Drift = -0.06 dB

Peak SAR (extrapolated) = 3.14 W/kg

**SAR(1 g) = 2.12 W/kg; SAR(10 g) = 1.41 W/kg**

Maximum value of SAR (measured) = 2.67 W/kg



0 dB = 2.67 W/kg = 4.27 dBW/kg

Test Laboratory: SGS-SAR Lab

## System Performance Check 750 MHz Body

**DUT: D750V3; Type: D750V3; Serial: 1160**

Communication System: UID 0, CW (0); Frequency: 750 MHz; Duty Cycle: 1:1

Medium: MSL750; Medium parameters used:  $f = 750$  MHz;  $\sigma = 0.972$  S/m;  $\epsilon_r = 56.463$ ;  $\rho = 1000$  kg/m<sup>3</sup>

Phantom section: Flat Section

DASY 5 Configuration:

- Probe: EX3DV4 - SN3962; ConvF(10.08, 10.08, 10.08); Calibrated: 2016-12-19;
- Sensor-Surface: 2mm (Mechanical Surface Detection),  $z = -2.0, 31.0$
- Electronics: DAE4 Sn1267; Calibrated: 2017-02-23
- Phantom: SAM 1; Type: SAM V4.0; Serial: TP-1283
- DASY52 52.8.8(1222); SEMCAD X 14.6.10(7331)

**Body/d=15mm, Pin=250mW/Area Scan (7x13x1):** Measurement grid:  $dx=15$ mm,  $dy=15$ mm

Maximum value of SAR (measured) = 2.69 W/kg

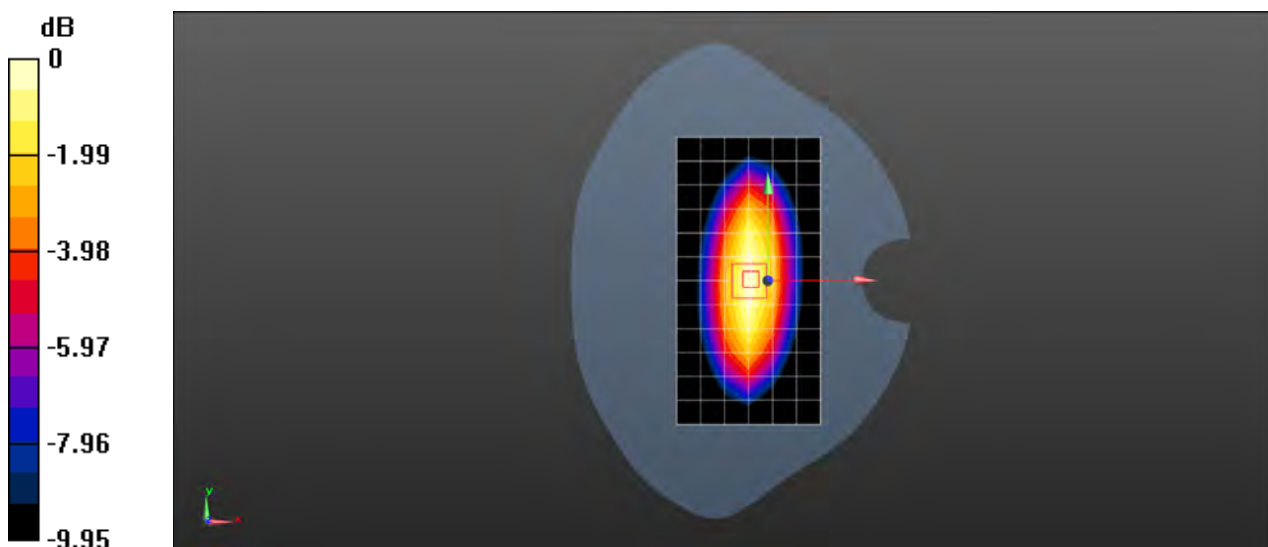
**Body/d=15mm, Pin=250mW/Zoom Scan (7x7x7) (7x7x7)/Cube 0:** Measurement grid:  $dx=5$ mm,  $dy=5$ mm,  $dz=5$ mm

Reference Value = 46.96 V/m; Power Drift = -0.06 dB

Peak SAR (extrapolated) = 3.18 W/kg

**SAR(1 g) = 2.15 W/kg; SAR(10 g) = 1.43 W/kg**

Maximum value of SAR (measured) = 2.70 W/kg



0 dB = 2.70 W/kg = 4.31 dBW/kg

Test Laboratory: SGS-SAR Lab

## System Performance Check 835 MHz Head

**DUT: D835V2; Type: D835V2; Serial: 4d105**

Communication System: UID 0, CW (0); Frequency: 835 MHz; Duty Cycle: 1:1

Medium: HSL835; Medium parameters used:  $f = 835$  MHz;  $\sigma = 0.909$  S/m;  $\epsilon_r = 42.04$ ;  $\rho = 1000$  kg/m<sup>3</sup>

Phantom section: Flat Section

DASY 5 Configuration:

- Probe: EX3DV4 - SN3962; ConvF(9.78, 9.78, 9.78); Calibrated: 2016-12-19;
- Sensor-Surface: 2mm (Mechanical Surface Detection),  $z = -2.0, 31.0$
- Electronics: DAE4 Sn1267; Calibrated: 2017-02-23
- Phantom: SAM 1; Type: SAM V4.0; Serial: TP-1283
- DASY52 52.8.8(1222); SEMCAD X 14.6.10(7331)

**Body/d=15mm, Pin=250mW/Area Scan (7x13x1):** Measurement grid: dx=15mm, dy=15mm

Maximum value of SAR (measured) = 2.82 W/kg

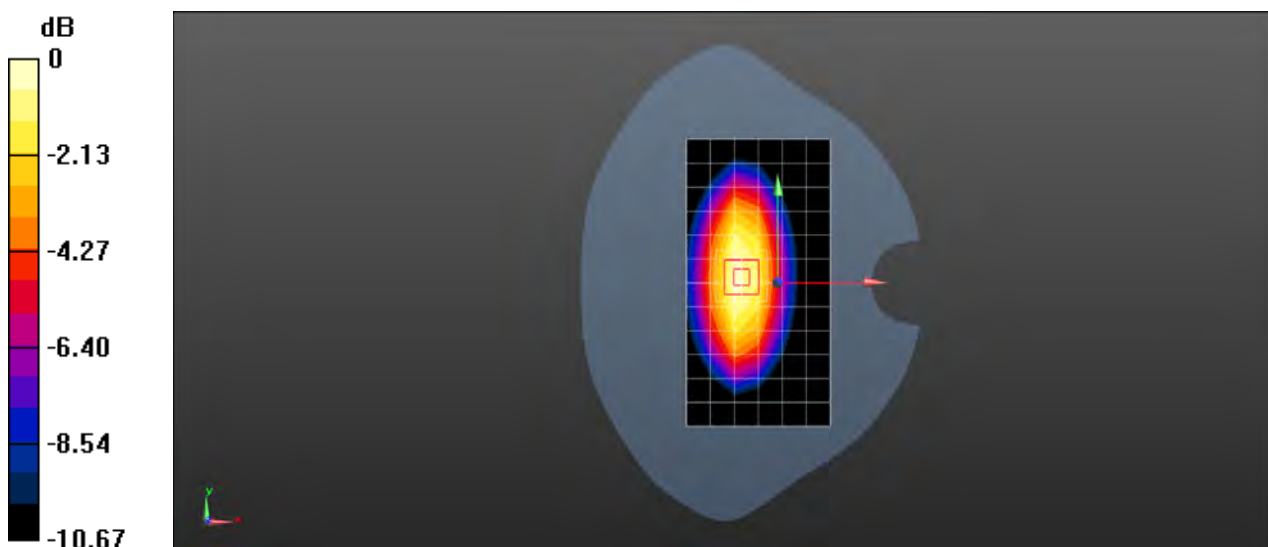
**Body/d=15mm, Pin=250mW/Zoom Scan (5x5x7)/Cube 0:** Measurement grid: dx=8mm, dy=8mm, dz=5mm

Reference Value = 50.62 V/m; Power Drift = 0.06 dB

Peak SAR (extrapolated) = 3.49 W/kg

**SAR(1 g) = 2.34 W/kg; SAR(10 g) = 1.53 W/kg**

Maximum value of SAR (measured) = 2.98 W/kg



0 dB = 2.98 W/kg = 4.74 dBW/kg

Test Laboratory: SGS-SAR Lab

## System Performance Check 835 MHz Head

**DUT: D835V2; Type: D835V2; Serial: 4d105**

Communication System: UID 0, CW (0); Frequency: 835 MHz; Duty Cycle: 1:1

Medium: HSL835; Medium parameters used:  $f = 835$  MHz;  $\sigma = 0.905$  S/m;  $\epsilon_r = 42.113$ ;  $\rho = 1000$  kg/m<sup>3</sup>

Phantom section: Flat Section

DASY 5 Configuration:

- Probe: EX3DV4 - SN3789; ConvF(8.61, 8.61, 8.61); Calibrated: 2017-01-13;
- Sensor-Surface: 2mm (Mechanical Surface Detection),  $z = -2.0, 31.0$
- Electronics: DAE4 Sn1374; Calibrated: 2017-08-31
- Phantom: SAM1; Type: SAM; Serial: 1912
- DASY52 52.8.8(1222); SEMCAD X 14.6.10(7331)

**Body/d=15mm, Pin=250mW/Area Scan (7x13x1):** Measurement grid:  $dx=15$ mm,  $dy=15$ mm

Maximum value of SAR (measured) = 3.00 W/kg

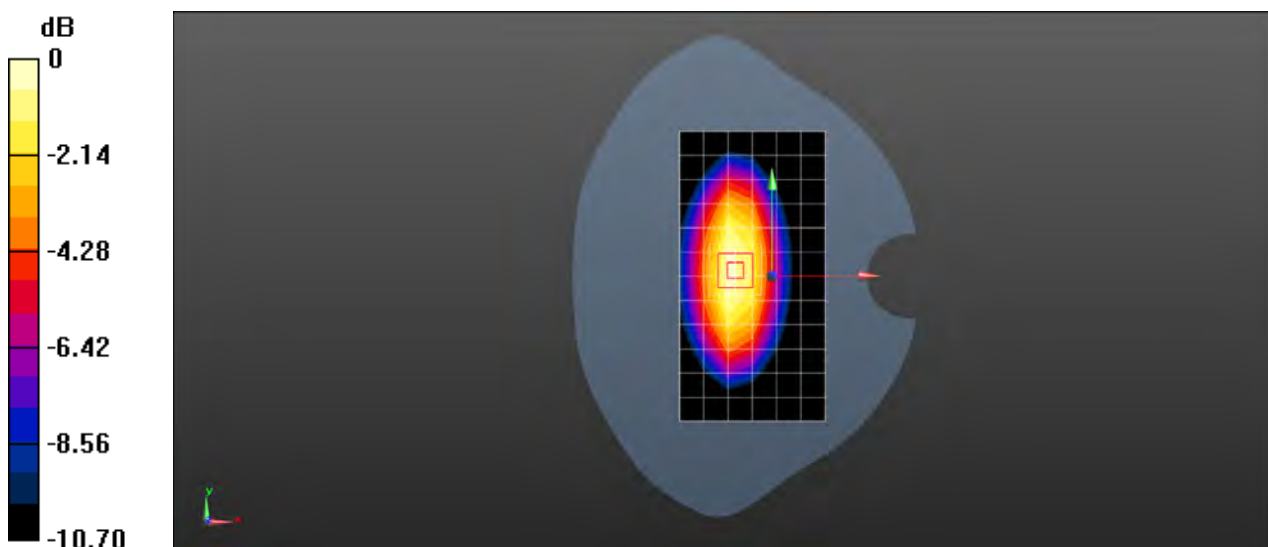
**Body/d=15mm, Pin=250mW/Zoom Scan (5x5x7)/Cube 0:** Measurement grid:  $dx=8$ mm,  $dy=8$ mm,  $dz=5$ mm

Reference Value = 52.55 V/m; Power Drift = 0.07 dB

Peak SAR (extrapolated) = 3.75 W/kg

**SAR(1 g) = 2.48 W/kg; SAR(10 g) = 1.62 W/kg**

Maximum value of SAR (measured) = 3.17 W/kg



0 dB = 3.17 W/kg = 5.01 dBW/kg

Test Laboratory: SGS-SAR Lab

## System Performance Check 835 MHz Body

**DUT: D835V2; Type: D835V2; Serial: 4d105**

Communication System: UID 0, CW (0); Frequency: 835 MHz; Duty Cycle: 1:1

Medium: MSL835; Medium parameters used:  $f = 835$  MHz;  $\sigma = 1.005$  S/m;  $\epsilon_r = 56.316$ ;  $\rho = 1000$  kg/m<sup>3</sup>

Phantom section: Flat Section

DASY 5 Configuration:

- Probe: EX3DV4 - SN3789; ConvF(8.8, 8.8, 8.8); Calibrated: 2017-01-13;
- Sensor-Surface: 2mm (Mechanical Surface Detection),  $z = -2.0, 31.0$
- Electronics: DAE4 Sn1374; Calibrated: 2016-08-23
- Phantom: SAM1; Type: SAM; Serial: 1912
- DASY52 52.8.8(1222); SEMCAD X 14.6.10(7331)

**Body/d=15mm, Pin=250mW/Area Scan (7x13x1):** Measurement grid:  $dx=15$ mm,  $dy=15$ mm

Maximum value of SAR (measured) = 3.17 W/kg

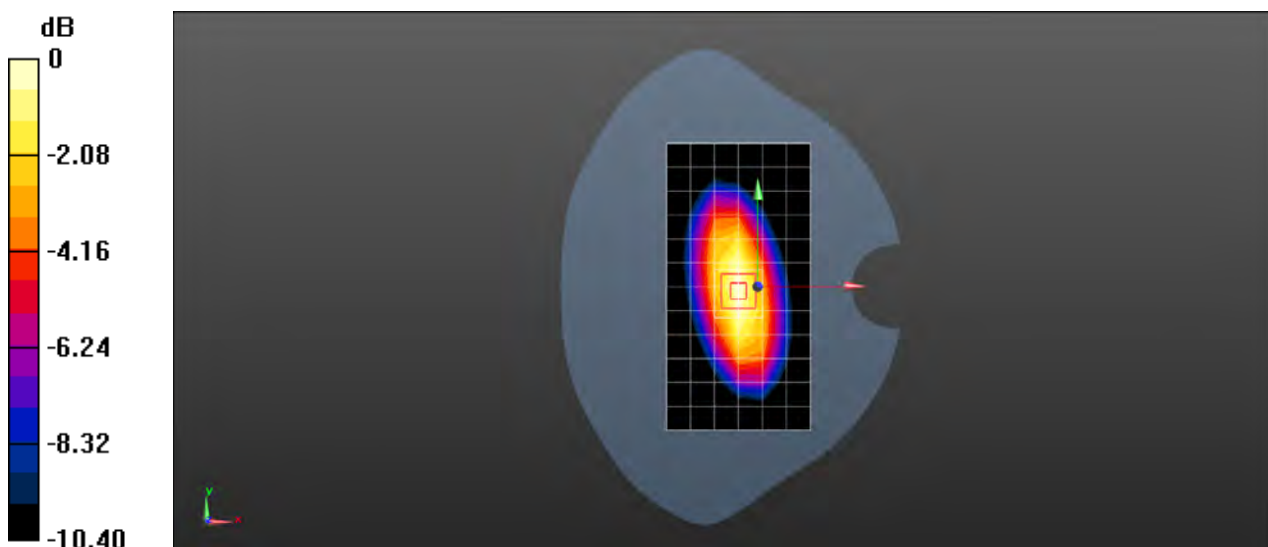
**Body/d=15mm, Pin=250mW/Zoom Scan (7x7x7) (7x7x7)/Cube 0:** Measurement grid:  $dx=5$ mm,  $dy=5$ mm,  $dz=5$ mm

Reference Value = 50.26 V/m; Power Drift = 0.11 dB

Peak SAR (extrapolated) = 3.74 W/kg

**SAR(1 g) = 2.53 W/kg; SAR(10 g) = 1.67 W/kg**

Maximum value of SAR (measured) = 3.18 W/kg



0 dB = 3.18 W/kg = 5.02 dBW/kg



Test Laboratory: SGS-SAR Lab

## System Performance Check 835 MHz Body

**DUT: D835V2; Type: D835V2; Serial: 4d105**

Communication System: UID 0, CW (0); Frequency: 835 MHz; Duty Cycle: 1:1

Medium: MSL835; Medium parameters used:  $f = 835$  MHz;  $\sigma = 0.985$  S/m;  $\epsilon_r = 53.807$ ;  $\rho = 1000$  kg/m<sup>3</sup>

Phantom section: Flat Section

DASY 5 Configuration:

- Probe: EX3DV4 - SN3962; ConvF(9.87, 9.87, 9.87); Calibrated: 2016-12-19;
- Sensor-Surface: 2mm (Mechanical Surface Detection),  $z = -2.0, 31.0$
- Electronics: DAE4 Sn1267; Calibrated: 2017-02-23
- Phantom: SAM 1; Type: SAM V4.0; Serial: TP-1283
- DASY52 52.8.8(1222); SEMCAD X 14.6.10(7331)

**Body/d=15mm, Pin=250mW/Area Scan (7x13x1):** Measurement grid:  $dx=15$ mm,  $dy=15$ mm

Maximum value of SAR (measured) = 3.11 W/kg

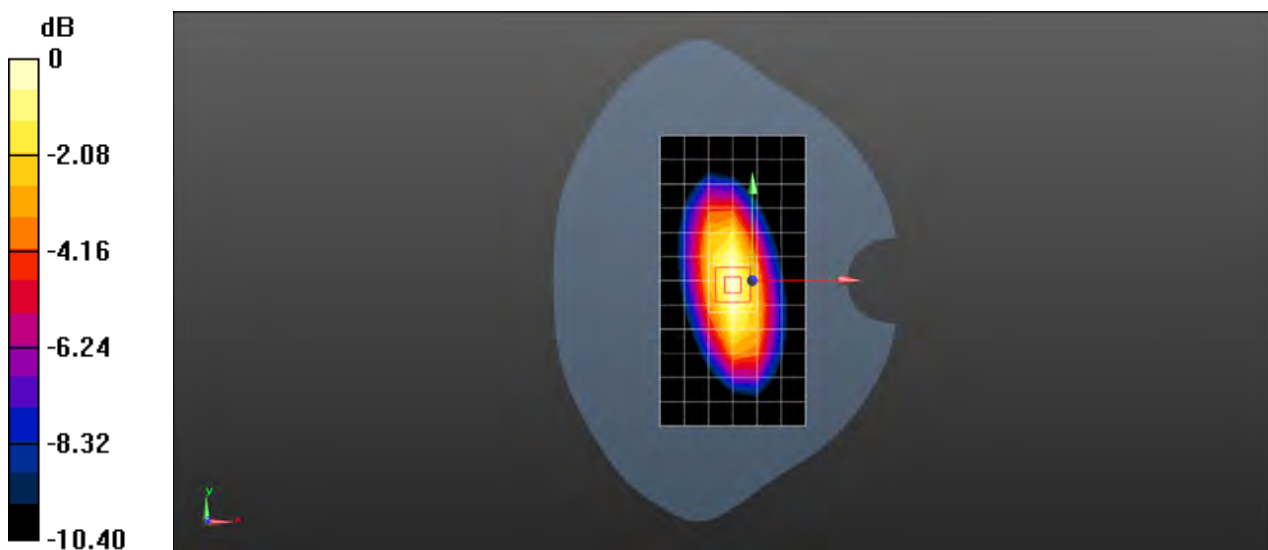
**Body/d=15mm, Pin=250mW/Zoom Scan (7x7x7) (7x7x7)/Cube 0:** Measurement grid:  $dx=5$ mm,  $dy=5$ mm,  $dz=5$ mm

Reference Value = 50.78 V/m; Power Drift = -0.11 dB

Peak SAR (extrapolated) = 3.64 W/kg

**SAR(1 g) = 2.48 W/kg; SAR(10 g) = 1.63 W/kg**

Maximum value of SAR (measured) = 3.12 W/kg



0 dB = 3.12 W/kg = 4.94 dBW/kg

Test Laboratory: SGS-SAR Lab

## System Performance Check 835 MHz Body

**DUT: D835V2; Type: D835V2; Serial: 4d105**

Communication System: UID 0, CW (0); Frequency: 835 MHz; Duty Cycle: 1:1

Medium: MSL835; Medium parameters used:  $f = 835$  MHz;  $\sigma = 1.003$  S/m;  $\epsilon_r = 56.301$ ;  $\rho = 1000$  kg/m<sup>3</sup>

Phantom section: Flat Section

DASY 5 Configuration:

- Probe: EX3DV4 - SN3962; ConvF(9.87, 9.87, 9.87); Calibrated: 2016-12-19;
- Sensor-Surface: 2mm (Mechanical Surface Detection),  $z = -2.0, 31.0$
- Electronics: DAE4 Sn1267; Calibrated: 2017-02-23
- Phantom: SAM2; Type: SAM; Serial: 1913
- DASY52 52.8.8(1222); SEMCAD X 14.6.10(7331)

**Body/d=15mm, Pin=250mW/Area Scan (7x13x1):** Measurement grid:  $dx=15$ mm,  $dy=15$ mm

Maximum value of SAR (measured) = 3.17 W/kg

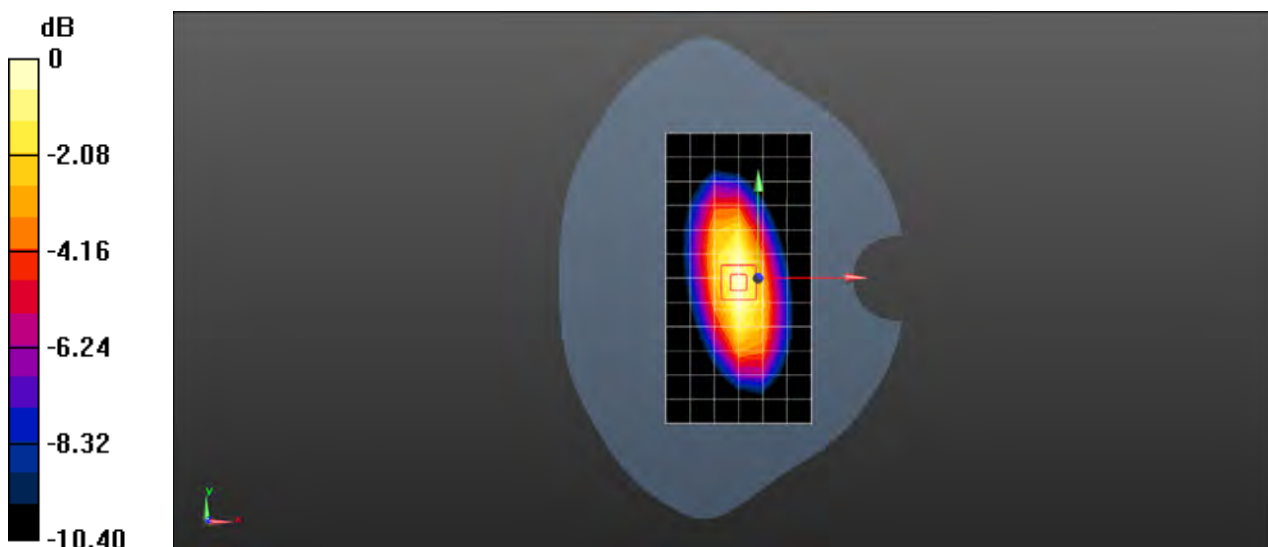
**Body/d=15mm, Pin=250mW/Zoom Scan (7x7x7) (7x7x7)/Cube 0:** Measurement grid:  $dx=5$ mm,  $dy=5$ mm,  $dz=5$ mm

Reference Value = 50.76 V/m; Power Drift = 0.01 dB

Peak SAR (extrapolated) = 3.70 W/kg

**SAR(1 g) = 2.52 W/kg; SAR(10 g) = 1.66 W/kg**

Maximum value of SAR (measured) = 3.17W/kg



0 dB = 3.17 W/kg = 5.01 dBW/kg

Test Laboratory: SGS-SAR Lab

## System Performance Check 1750 MHz Head

**DUT: D1750V2; Type: D1750V2; Serial: 1149**

Communication System: UID 0, CW (0); Frequency: 1750 MHz; Duty Cycle: 1:1

Medium: HSL1750; Medium parameters used:  $f = 1750$  MHz;  $\sigma = 1.372$  S/m;  $\epsilon_r = 39.117$ ;  $\rho = 1000$  kg/m<sup>3</sup>

Phantom section: Flat Section

DASY 5 Configuration:

- Probe: EX3DV4 - SN3962; ConvF(8.48, 8.48, 8.48); Calibrated: 2016-12-19;
- Sensor-Surface: 2mm (Mechanical Surface Detection),  $z = 1.0, 31.0$
- Electronics: DAE4 Sn1267; Calibrated: 2017-02-23
- Phantom: SAM2; Type: SAM; Serial: 1913
- DASY52 52.8.8(1222); SEMCAD X 14.6.10(7331)

**Body/d=10mm, Pin=250mW/Area Scan (7x13x1):** Measurement grid:  $dx=15$ mm,  $dy=15$ mm

Maximum value of SAR (measured) = 10.1 W/kg

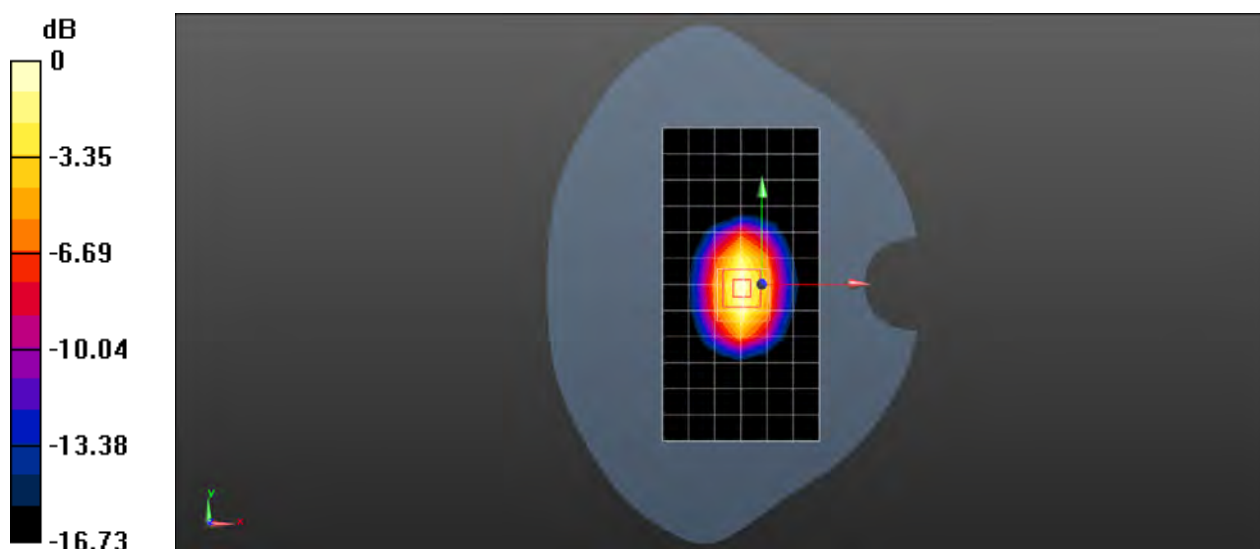
**Body/d=10mm, Pin=250mW/Zoom Scan (7x7x7) (7x7x7)/Cube 0:** Measurement grid:  $dx=5$ mm,  $dy=5$ mm,  $dz=5$ mm

Reference Value = 77.61 V/m; Power Drift = 0.01 dB

Peak SAR (extrapolated) = 16.5 W/kg

**SAR(1 g) = 9.1 W/kg; SAR(10 g) = 4.88 W/kg**

Maximum value of SAR (measured) = 10.2 W/kg



0 dB = 10.2 W/kg = 10.09 dBW/kg

Test Laboratory: SGS-SAR Lab

## System Performance Check 1750 MHz Head

**DUT: D1750V2; Type: D1750V2; Serial: 1149**

Communication System: UID 0, CW (0); Frequency: 1750 MHz; Duty Cycle: 1:1

Medium: HSL1750; Medium parameters used:  $f = 1750$  MHz;  $\sigma = 1.332$  S/m;  $\epsilon_r = 40.757$ ;  $\rho = 1000$  kg/m<sup>3</sup>

Phantom section: Flat Section

DASY 5 Configuration:

- Probe: EX3DV4 - SN3962; ConvF(8.48, 8.48, 8.48); Calibrated: 2016-12-19;
- Sensor-Surface: 2mm (Mechanical Surface Detection),  $z = -2.0, 31.0$
- Electronics: DAE4 Sn1267; Calibrated: 2017-02-23
- Phantom: SAM1; Type: SAM; Serial: 1912
- DASY52 52.8.8(1222); SEMCAD X 14.6.10(7331)

**Body/d=10mm, Pin=250mW/Area Scan (7x13x1):** Measurement grid:  $dx=15$ mm,  $dy=15$ mm

Maximum value of SAR (measured) = 9.84 W/kg

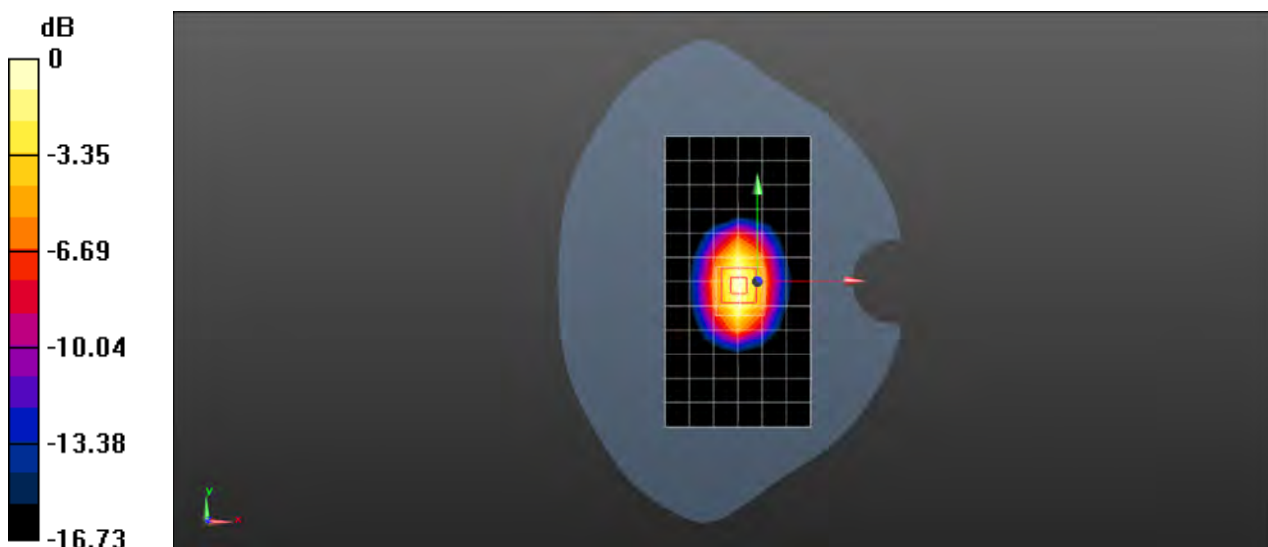
**Body/d=10mm, Pin=250mW/Zoom Scan (7x7x7) (7x7x7)/Cube 0:** Measurement grid:  $dx=5$ mm,  $dy=5$ mm,  $dz=5$ mm

Reference Value = 77.61 V/m; Power Drift = 0.01 dB

Peak SAR (extrapolated) = 16.0 W/kg

**SAR(1 g) = 8.83 W/kg; SAR(10 g) = 4.74 W/kg**

Maximum value of SAR (measured) = 9.89 W/kg



0 dB = 9.89 W/kg = 9.95 dBW/kg

Test Laboratory: SGS-SAR Lab

## System Performance Check 1750 MHz Body

**DUT: D1750V2; Type: D1750V2; Serial: 1149**

Communication System: UID 0, CW (0); Frequency: 1750 MHz; Duty Cycle: 1:1

Medium: MSL1750; Medium parameters used:  $f = 1750$  MHz;  $\sigma = 1.481$  S/m;  $\epsilon_r = 51.003$ ;  $\rho = 1000$  kg/m<sup>3</sup>

Phantom section: Flat Section

DASY 5 Configuration:

- Probe: EX3DV4 - SN3789; ConvF(7.36, 7.36, 7.36); Calibrated: 2017-01-13;
- Sensor-Surface: 2mm (Mechanical Surface Detection),  $z = 1.0, 31.0$
- Electronics: DAE4 Sn719; Calibrated: 2017-07-06
- Phantom: SAM2; Type: SAM; Serial: 1913
- DASY52 52.8.8(1222); SEMCAD X 14.6.10(7331)

**Body/d=10mm, Pin=250mW/Area Scan (7x13x1):** Measurement grid:  $dx=15$ mm,  $dy=15$ mm

Maximum value of SAR (measured) = 13.0 W/kg

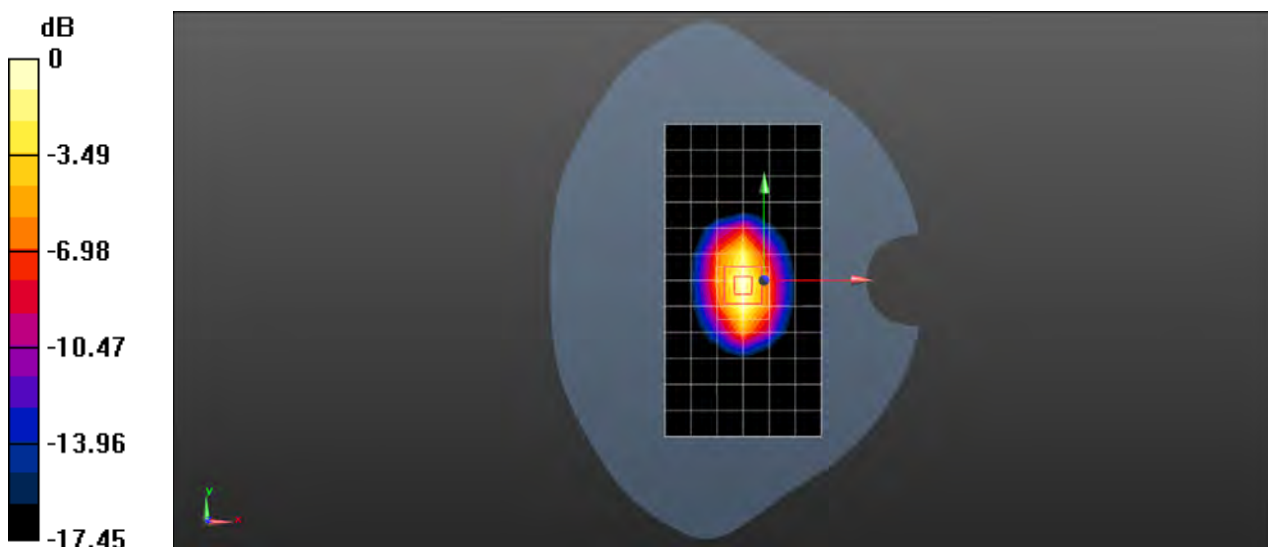
**Body/d=10mm, Pin=250mW/Zoom Scan (7x7x7) (7x7x7)/Cube 0:** Measurement grid:  $dx=5$ mm,  $dy=5$ mm,  $dz=5$ mm

Reference Value = 79.30 V/m; Power Drift = 0.01 dB

Peak SAR (extrapolated) = 17.0 W/kg

**SAR(1 g) = 9.43 W/kg; SAR(10 g) = 5.01 W/kg**

Maximum value of SAR (measured) = 13.5 W/kg



0 dB = 13.5 W/kg = 11.30 dBW/kg

Test Laboratory: SGS-SAR Lab

## System Performance Check 1750 MHz Body

**DUT: D1750V2; Type: D1750V2; Serial: 1149**

Communication System: UID 0, CW (0); Frequency: 1750 MHz; Duty Cycle: 1:1

Medium: MSL1750; Medium parameters used:  $f = 1750$  MHz;  $\sigma = 1.547$  S/m;  $\epsilon_r = 53.127$ ;  $\rho = 1000$  kg/m<sup>3</sup>

Phantom section: Flat Section

DASY 5 Configuration:

- Probe: EX3DV4 - SN3789; ConvF(7.36, 7.36, 7.36); Calibrated: 2017-01-13;
- Sensor-Surface: 2mm (Mechanical Surface Detection),  $z = -2.0, 31.0$
- Electronics: DAE4 Sn1374; Calibrated: 2017-08-31
- Phantom: SAM1; Type: SAM; Serial: 1912
- DASY52 52.8.8(1222); SEMCAD X 14.6.10(7331)

**Body/d=10mm, Pin=250mW/Area Scan (7x13x1):** Measurement grid:  $dx=15$ mm,  $dy=15$ mm

Maximum value of SAR (measured) = 13.6 W/kg

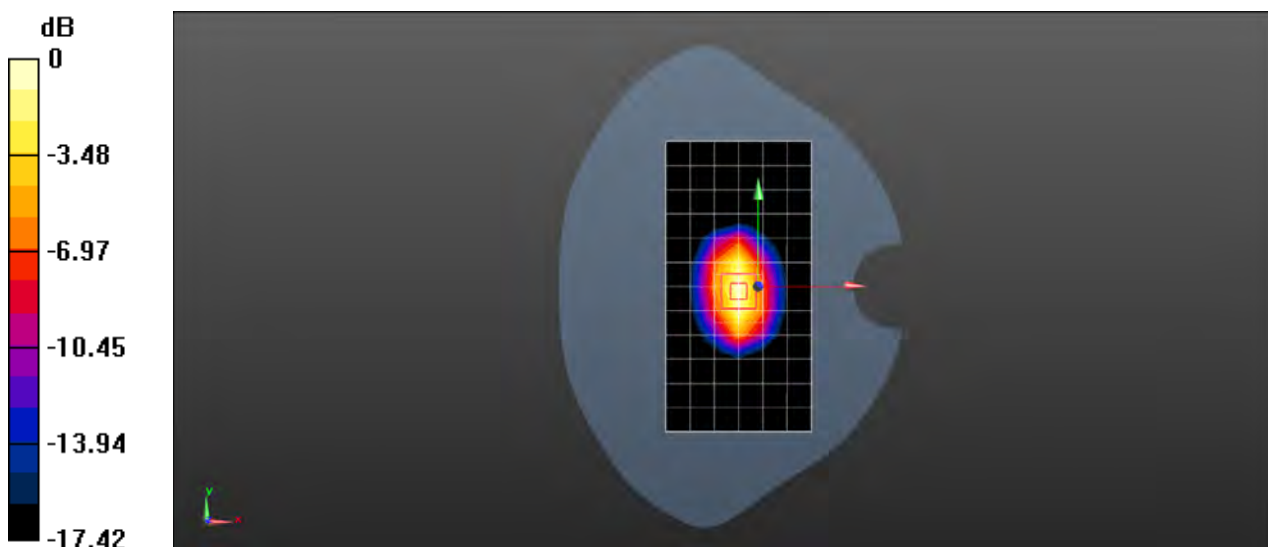
**Body/d=10mm, Pin=250mW/Zoom Scan (7x7x7) (7x7x7)/Cube 0:** Measurement grid:  $dx=5$ mm,  $dy=5$ mm,  $dz=5$ mm

Reference Value = 79.27 V/m; Power Drift = 0.01 dB

Peak SAR (extrapolated) = 17.7 W/kg

**SAR(1 g) = 9.84 W/kg; SAR(10 g) = 5.23 W/kg**

Maximum value of SAR (measured) = 14.0 W/kg



0 dB = 14.0 W/kg = 11.46 dBW/kg

Test Laboratory: SGS-SAR Lab

## System Performance Check 1900 MHz Head

**DUT: D1900V2; Type: D1900V2; Serial: 5d028**

Communication System: UID 0, CW (0); Frequency: 1900 MHz; Duty Cycle: 1:1

Medium: HSL1900; Medium parameters used:  $f = 1900$  MHz;  $\sigma = 1.373$  S/m;  $\epsilon_r = 40.58$ ;  $\rho = 1000$  kg/m<sup>3</sup>

Phantom section: Flat Section

DASY 5 Configuration:

- Probe: EX3DV4 - SN3789; ConvF(7.37, 7.37, 7.37); Calibrated: 2017-01-13;
- Sensor-Surface: 2mm (Mechanical Surface Detection),  $z = -2.0, 31.0$
- Electronics: DAE4 Sn719; Calibrated: 2017-07-06
- Phantom: SAM1; Type: SAM; Serial: 1912
- DASY52 52.8.8(1222); SEMCAD X 14.6.10(7331)

**Body/d=10mm, Pin=250mW/Area Scan (7x11x1):** Measurement grid:  $dx=15$ mm,  $dy=15$ mm

Maximum value of SAR (measured) = 11.4 W/kg

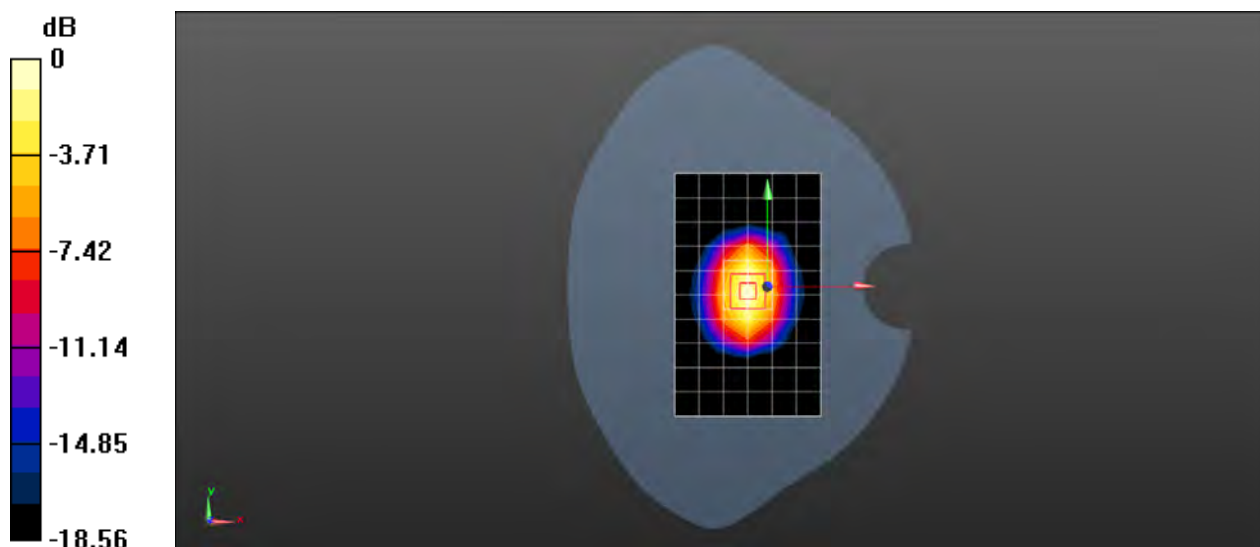
**Body/d=10mm, Pin=250mW/Zoom Scan (7x7x7) (7x7x7)/Cube 0:** Measurement grid:  $dx=5$ mm,  $dy=5$ mm,  $dz=5$ mm

Reference Value = 84.52 V/m; Power Drift = 0.02 dB

Peak SAR (extrapolated) = 19.2 W/kg

**SAR(1 g) = 10.2 W/kg; SAR(10 g) = 5.29 W/kg**

Maximum value of SAR (measured) = 11.4 W/kg



0 dB = 11.4 W/kg = 10.57 dBW/kg

Test Laboratory: SGS-SAR Lab

## System Performance Check 1900 MHz Head

**DUT: D1900V2; Type: D1900V2; Serial: 5d028**

Communication System: UID 0, CW (0); Frequency: 1900 MHz; Duty Cycle: 1:1

Medium: HSL1900; Medium parameters used:  $f = 1900$  MHz;  $\sigma = 1.451$  S/m;  $\epsilon_r = 38.564$ ;  $\rho = 1000$  kg/m<sup>3</sup>

Phantom section: Flat Section

DASY 5 Configuration:

- Probe: EX3DV4 - SN3789; ConvF(7.37, 7.37, 7.37); Calibrated: 2017-01-13;
- Sensor-Surface: 2mm (Mechanical Surface Detection),  $z = 1.0, 31.0$
- Electronics: DAE4 Sn1374; Calibrated: 2017-08-31
- Phantom: SAM2; Type: SAM; Serial: 1913
- DASY52 52.8.8(1222); SEMCAD X 14.6.10(7331)

**Body/d=10mm, Pin=250mW/Area Scan (7x11x1):** Measurement grid:  $dx=15$ mm,  $dy=15$ mm

Maximum value of SAR (measured) = 12.0 W/kg

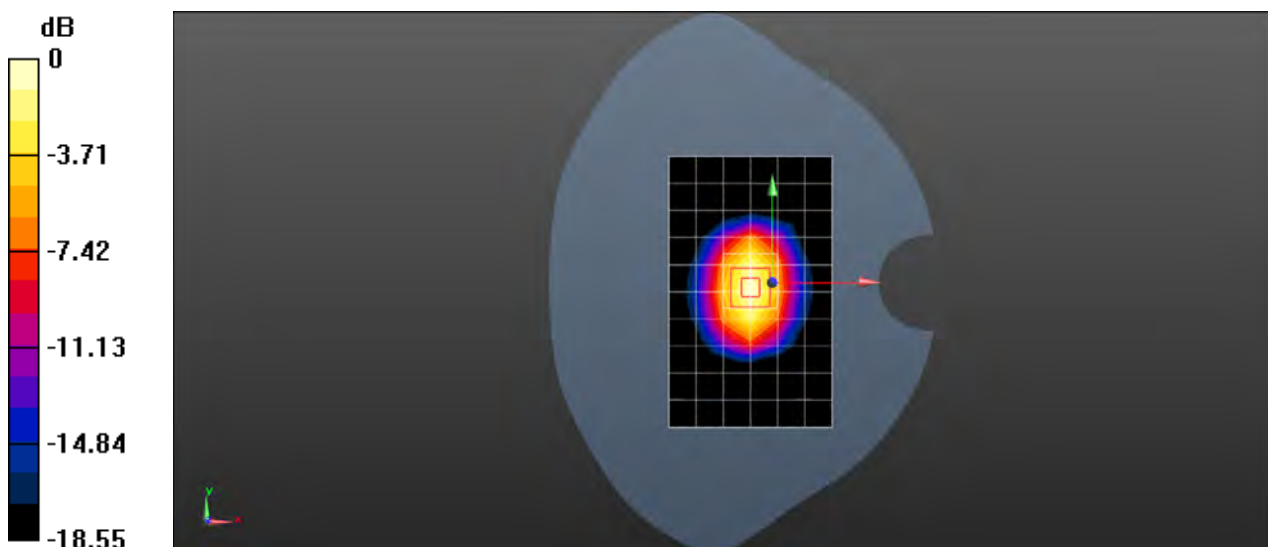
**Body/d=10mm, Pin=250mW/Zoom Scan (7x7x7) (7x7x7)/Cube 0:** Measurement grid:  $dx=5$ mm,  $dy=5$ mm,  $dz=5$ mm

Reference Value = 84.52 V/m; Power Drift = 0.02 dB

Peak SAR (extrapolated) = 20.3 W/kg

**SAR(1 g) = 10.8 W/kg; SAR(10 g) = 5.59 W/kg**

Maximum value of SAR (measured) = 12.1 W/kg



0 dB = 12.1 W/kg = 10.83 dBW/kg



Test Laboratory: SGS-SAR Lab

## System Performance Check 1900 MHz Body

**DUT: D1900V2; Type: D1900V2; Serial: 5d028**

Communication System: UID 0, CW (0); Frequency: 1900 MHz; Duty Cycle: 1:1

Medium: MSL1900; Medium parameters used:  $f = 1900$  MHz;  $\sigma = 1.476$  S/m;  $\epsilon_r = 53.025$ ;  $\rho = 1000$  kg/m<sup>3</sup>

Phantom section: Flat Section

DASY 5 Configuration:

- Probe: EX3DV4 - SN3962; ConvF(7.82, 7.82, 7.82); Calibrated: 2016-12-19;
- Sensor-Surface: 2mm (Mechanical Surface Detection),  $z = 1.0, 31.0$
- Electronics: DAE4 Sn1267; Calibrated: 2017-02-23
- Phantom: SAM2; Type: SAM; Serial: 1913
- DASY52 52.8.8(1222); SEMCAD X 14.6.10(7331)

**Body/d=10mm, Pin=250mW/Area Scan (7x11x1):** Measurement grid:  $dx=15$ mm,  $dy=15$ mm

Maximum value of SAR (measured) = 11.3 W/kg

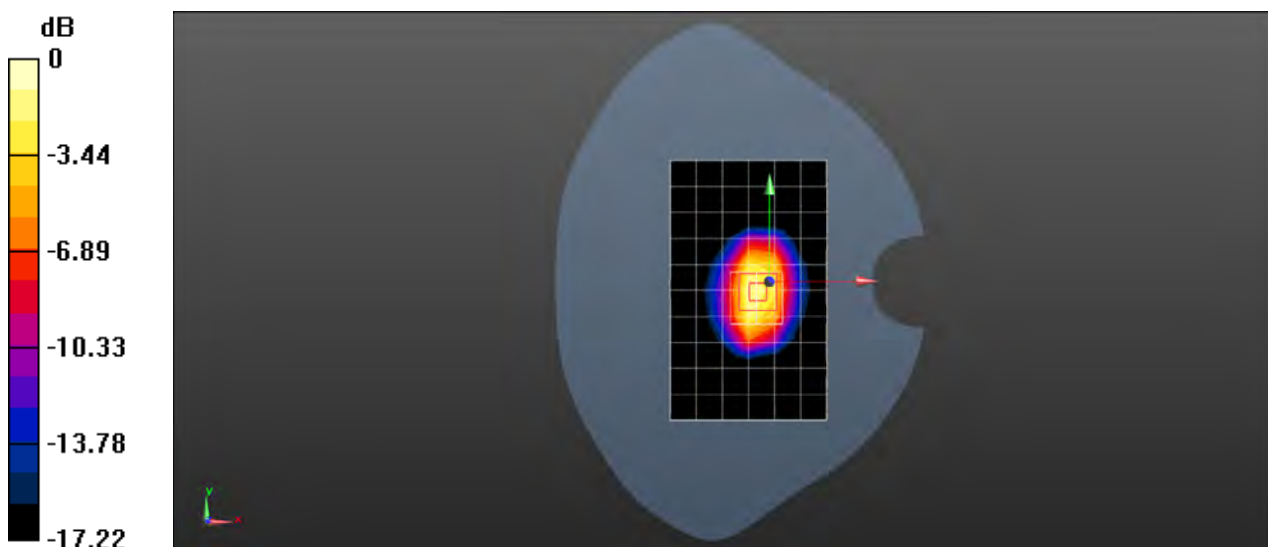
**Body/d=10mm, Pin=250mW/Zoom Scan (7x7x7) (7x7x7)/Cube 0:** Measurement grid:  $dx=5$ mm,  $dy=5$ mm,  $dz=5$ mm

Reference Value = 60.09 V/m; Power Drift = -0.02 dB

Peak SAR (extrapolated) = 17.9 W/kg

**SAR(1 g) = 10 W/kg; SAR(10 g) = 5.31 W/kg**

Maximum value of SAR (measured) = 14.1 W/kg



0 dB = 14.1 W/kg = 11.49 dBW/kg

Test Laboratory: SGS-SAR Lab

## System Performance Check 1900 MHz Body

**DUT: D1900V2; Type: D1900V2; Serial: 5d028**

Communication System: UID 0, CW (0); Frequency: 1900 MHz; Duty Cycle: 1:1

Medium: MSL1900; Medium parameters used:  $f = 1900$  MHz;  $\sigma = 1.51$  S/m;  $\epsilon_r = 53.237$ ;  $\rho = 1000$  kg/m<sup>3</sup>

Phantom section: Flat Section

DASY 5 Configuration:

- Probe: EX3DV4 - SN3962; ConvF(7.82, 7.82, 7.82); Calibrated: 2016-12-19;
- Sensor-Surface: 2mm (Mechanical Surface Detection),  $z = -2.0, 31.0$
- Electronics: DAE4 Sn1267; Calibrated: 2017-02-23
- Phantom: SAM 1; Type: SAM V4.0; Serial: TP-1283
- DASY52 52.8.8(1222); SEMCAD X 14.6.10(7331)

**Body/d=10mm, Pin=250mW/Area Scan (7x11x1):** Measurement grid:  $dx=15$ mm,  $dy=15$ mm

Maximum value of SAR (measured) = 11.5 W/kg

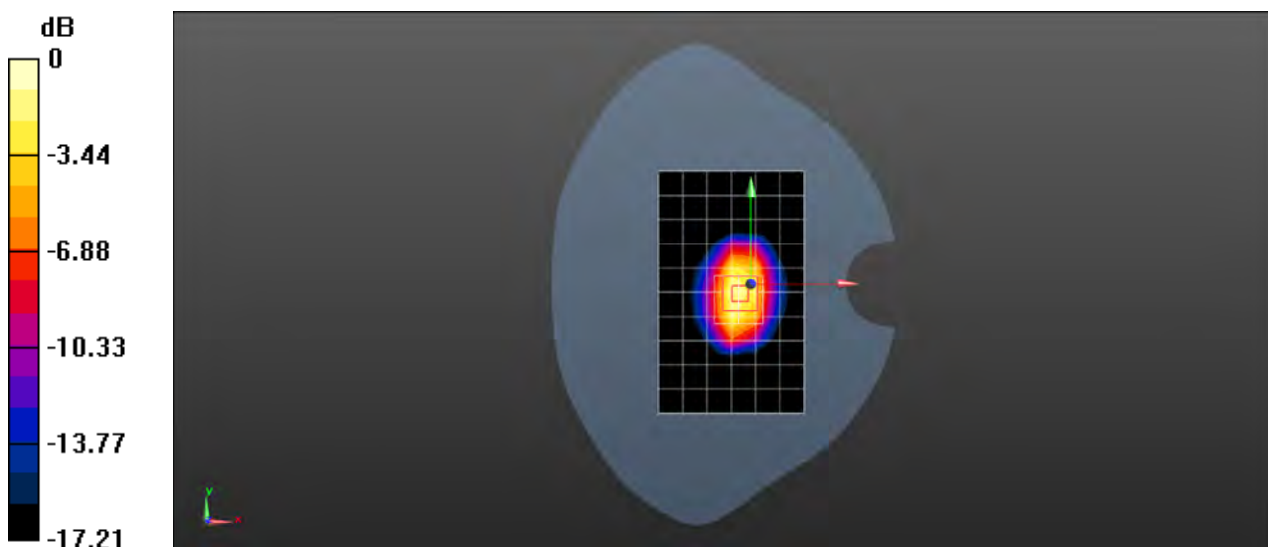
**Body/d=10mm, Pin=250mW/Zoom Scan (7x7x7) (7x7x7)/Cube 0:** Measurement grid:  $dx=5$ mm,  $dy=5$ mm,  $dz=5$ mm

Reference Value = 60.09 V/m; Power Drift = -0.02 dB

Peak SAR (extrapolated) = 18.3 W/kg

**SAR(1 g) = 10.3 W/kg; SAR(10 g) = 5.43 W/kg**

Maximum value of SAR (measured) = 14.4 W/kg



0 dB = 14.4 W/kg = 11.58 dBW/kg

Test Laboratory: SGS-SAR Lab

## System Performance Check 2450MHz Head

**DUT: D2450V2; Type: D2450V2; Serial: 733**

Communication System: UID 0, CW; Frequency: 2450 MHz; Duty Cycle: 1:1

Medium: HSL2450; Medium parameters used:  $f = 2450$  MHz;  $\sigma = 1.855$  S/m;  $\epsilon_r = 37.999$ ;  $\rho = 1000$  kg/m<sup>3</sup>

Phantom section: Flat Section

DASY 5 Configuration:

- Probe: EX3DV4 - SN3962; ConvF(7.33, 7.33, 7.33); Calibrated: 2016-12-19;
- Sensor-Surface: 2mm (Mechanical Surface Detection),  $z = -2.0, 31.0$
- Electronics: DAE4 Sn1267; Calibrated: 2017-02-23
- Phantom: SAM2; Type: SAM; Serial: 1913
- DASY52 52.8.8(1222); SEMCAD X 14.6.10(7331)

**Body/d=10mm, Pin=250mW/Area Scan (9x14x1):** Measurement grid:  $dx=12$ mm,  $dy=12$ mm

Maximum value of SAR (measured) = 14.1 W/kg

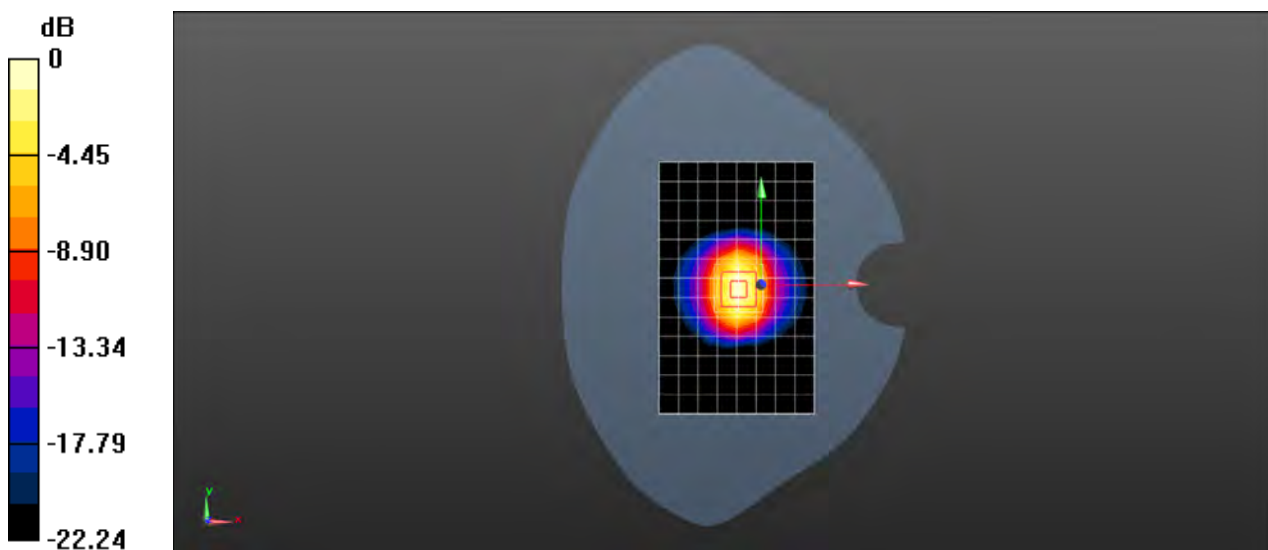
**Body/d=10mm, Pin=250mW/Zoom Scan (7x7x7) (7x7x7)/Cube 0:** Measurement grid:  $dx=5$ mm,  $dy=5$ mm,  $dz=5$ mm

Reference Value = 86.57 V/m; Power Drift = 0.04 dB

Peak SAR (extrapolated) = 28.4 W/kg

**SAR(1 g) = 13.5 W/kg; SAR(10 g) = 6.26 W/kg**

Maximum value of SAR (measured) = 15.5 W/kg



0 dB = 15.5 W/kg = 11.90 dBW/kg

Test Laboratory: SGS-SAR Lab

## System Performance Check 2450MHz Body

**DUT: D2450V2; Type: D2450V2; Serial: 733**

Communication System: UID 0, CW (0); Frequency: 2450 MHz; Duty Cycle: 1:1

Medium: MSL2450; Medium parameters used:  $f = 2450$  MHz;  $\sigma = 1.995$  S/m;  $\epsilon_r = 52.325$ ;  $\rho = 1000$  kg/m<sup>3</sup>

Phantom section: Flat Section

DASY 5 Configuration:

- Probe: EX3DV4 - SN3962; ConvF(7.46, 7.46, 7.46); Calibrated: 2016-12-19;
- Sensor-Surface: 2mm (Mechanical Surface Detection),  $z = -2.0, 31.0$
- Electronics: DAE4 Sn1267; Calibrated: 2017-02-23
- Phantom: SAM 1; Type: SAM V4.0; Serial: TP-1283
- DASY52 52.8.8(1222); SEMCAD X 14.6.10(7331)

**Body/d=10mm, Pin=250mW/Area Scan (10x14x1):** Measurement grid:  $dx=12$ mm,  $dy=12$ mm

Maximum value of SAR (measured) = 13.6 W/kg

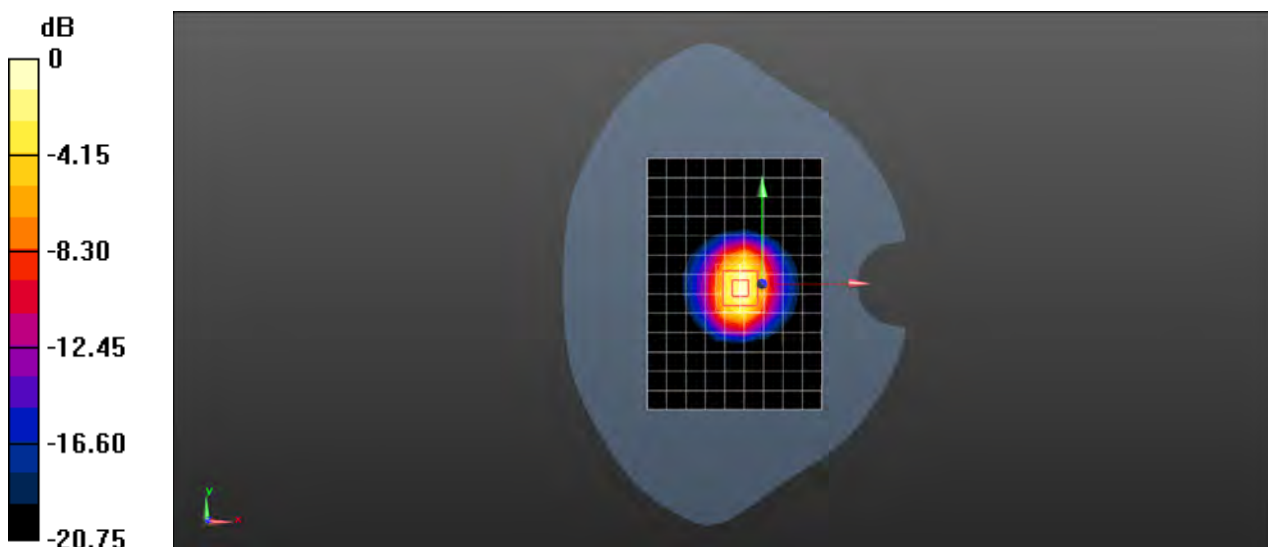
**Body/d=10mm, Pin=250mW/Zoom Scan (7x7x7) (7x7x7)/Cube 0:** Measurement grid:  $dx=5$ mm,  $dy=5$ mm,  $dz=5$ mm

Reference Value = 79.74 V/m; Power Drift = 0.02 dB

Peak SAR (extrapolated) = 25.6 W/kg

**SAR(1 g) = 12.8 W/kg; SAR(10 g) = 6.01 W/kg**

Maximum value of SAR (measured) = 14.8 W/kg



0 dB = 14.8 W/kg = 11.70 dBW/kg

Test Laboratory: SGS-SAR Lab

## System Performance Check 2600MHz Head

**DUT: Dipole D2600V2; Type: D2600V2; Serial: 1125**

Communication System: UID 0, CW (0); Frequency: 2600 MHz; Duty Cycle: 1:1

Medium: HSL2600; Medium parameters used:  $f = 2600$  MHz;  $\sigma = 2.028$  S/m;  $\epsilon_r = 37.439$ ;  $\rho = 1000$  kg/m<sup>3</sup>

Phantom section: Flat Section

DASY 5 Configuration:

- Probe: EX3DV4 - SN3962; ConvF(7.39, 7.39, 7.39); Calibrated: 2016-12-19;
- Sensor-Surface: 2mm (Mechanical Surface Detection),  $z = -2.0, 31.0$
- Electronics: DAE4 Sn1267; Calibrated: 2017-02-23
- Phantom: SAM2; Type: SAM; Serial: 1913
- DASY52 52.8.8(1222); SEMCAD X 14.6.10(7331)

**Body/d=10mm, Pin=250mW/Area Scan (10x13x1):** Measurement grid:  $dx=10$ mm,  $dy=10$ mm

Maximum value of SAR (measured) = 14.8 W/kg

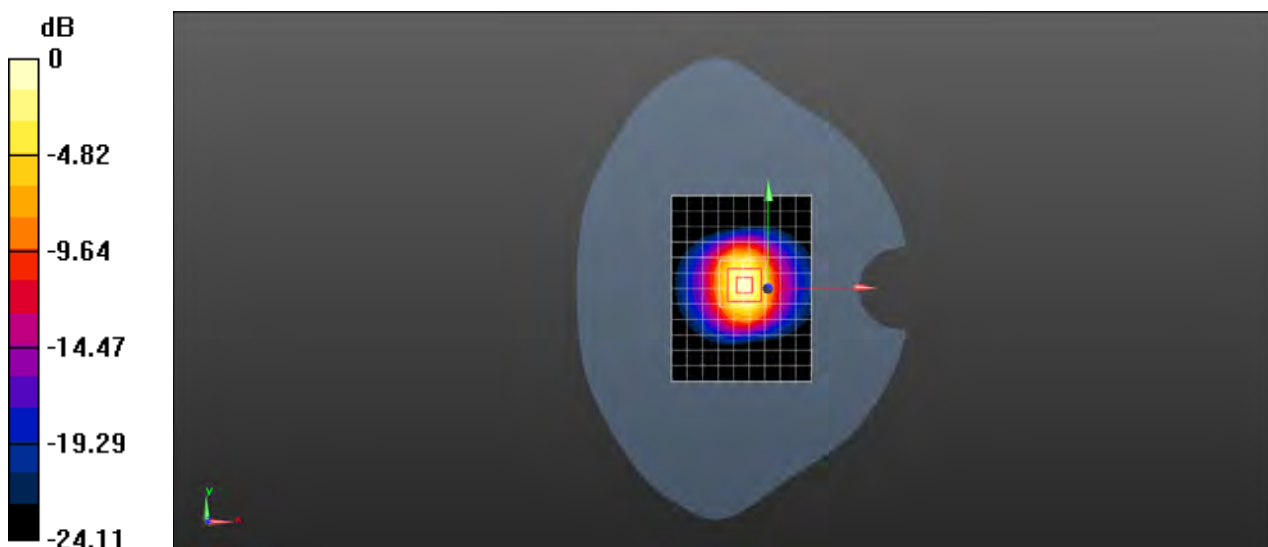
**Body/d=10mm, Pin=250mW/Zoom Scan (7x7x7) (7x7x7)/Cube 0:** Measurement grid:  $dx=5$ mm,  $dy=5$ mm,  $dz=5$ mm

Reference Value = 88.53 V/m; Power Drift = 0.01 dB

Peak SAR (extrapolated) = 32.4 W/kg

**SAR(1 g) = 14.4 W/kg; SAR(10 g) = 6.33 W/kg**

Maximum value of SAR (measured) = 16.4 W/kg



0 dB = 16.4 W/kg = 12.15 dBW/kg

Test Laboratory: SGS-SAR Lab

## System Performance Check 2600MHz Head

**DUT: Dipole D2600V2; Type: D2600V2; Serial: 1125**

Communication System: UID 0, CW (0); Frequency: 2600 MHz; Duty Cycle: 1:1

Medium: HSL2600; Medium parameters used:  $f = 2600$  MHz;  $\sigma = 2.019$  S/m;  $\epsilon_r = 37.452$ ;  $\rho = 1000$  kg/m<sup>3</sup>

Phantom section: Flat Section

DASY 5 Configuration:

- Probe: EX3DV4 - SN3789; ConvF(6.7, 6.7, 6.7); Calibrated: 2017-01-13;
- Sensor-Surface: 2mm (Mechanical Surface Detection),  $z = 1.0, 31.0$
- Electronics: DAE4 Sn1374; Calibrated: 2017-08-31
- Phantom: SAM2; Type: SAM; Serial: 1913
- DASY52 52.8.8(1222); SEMCAD X 14.6.10(7331)

**Body/d=10mm, Pin=250mW/Area Scan (10x13x1):** Measurement grid:  $dx=10$ mm,  $dy=10$ mm

Maximum value of SAR (measured) = 15.3 W/kg

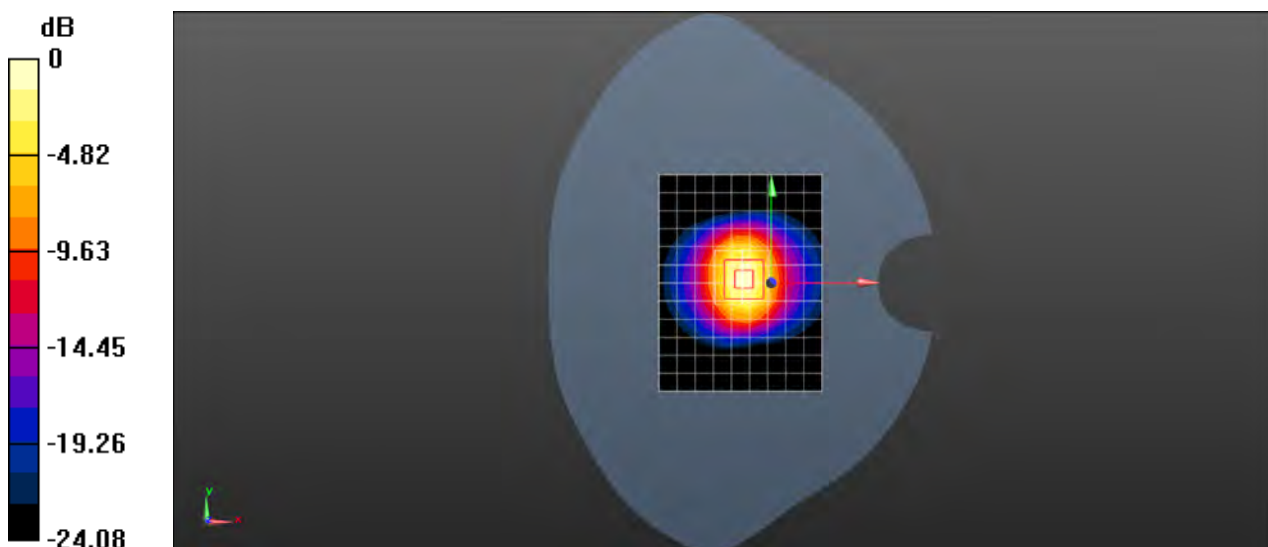
**Body/d=10mm, Pin=250mW/Zoom Scan (7x7x7) (7x7x7)/Cube 0:** Measurement grid:  $dx=5$ mm,  $dy=5$ mm,  $dz=5$ mm

Reference Value = 90.00 V/m; Power Drift = -0.00 dB

Peak SAR (extrapolated) = 33.7 W/kg

**SAR(1 g) = 14.9 W/kg; SAR(10 g) = 6.57 W/kg**

Maximum value of SAR (measured) = 17.0 W/kg



0 dB = 17.0 W/kg = 12.30 dBW/kg

Test Laboratory: SGS-SAR Lab

## System Performance Check 2600MHz Body

**DUT: D2600V2; Type: D2600V2; Serial: 1125**

Communication System: UID 0, CW (0); Frequency: 2600 MHz; Duty Cycle: 1:1

Medium: MSL2600; Medium parameters used:  $f = 2600$  MHz;  $\sigma = 2.187$  S/m;  $\epsilon_r = 50.237$ ;  $\rho = 1000$  kg/m<sup>3</sup>

Phantom section: Flat Section

DASY 5 Configuration:

- Probe: EX3DV4 - SN3962; ConvF(7.26, 7.26, 7.26); Calibrated: 2016-12-19;
- Sensor-Surface: 2mm (Mechanical Surface Detection),  $z = 1.0, 31.0$
- Electronics: DAE4 Sn1267; Calibrated: 2017-02-23
- Phantom: SAM2; Type: SAM; Serial: 1913
- DASY52 52.8.8(1222); SEMCAD X 14.6.10(7331)

**Body/d=10mm, Pin=250mW/Area Scan (10x11x1):** Measurement grid:  $dx=12$ mm,  $dy=12$ mm

Maximum value of SAR (measured) = 17.6 W/kg

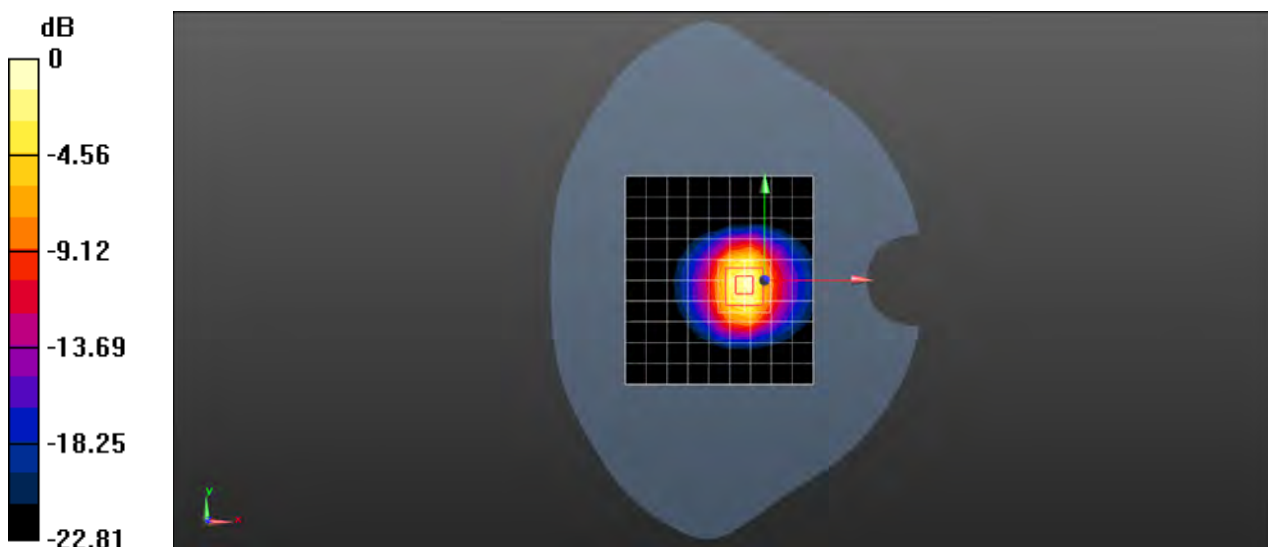
**Body/d=10mm, Pin=250mW/Zoom Scan (7x7x7) (7x7x7)/Cube 0:** Measurement grid:  $dx=5$ mm,  $dy=5$ mm,  $dz=5$ mm

Reference Value = 76.35 V/m; Power Drift = -0.02 dB

Peak SAR (extrapolated) = 27.8 W/kg

**SAR(1 g) = 13.5 W/kg; SAR(10 g) = 6.1 W/kg**

Maximum value of SAR (measured) = 20.8 W/kg



0 dB = 20.8 W/kg = 13.18 dBW/kg

Test Laboratory: SGS-SAR Lab

## System Performance Check 2600MHz Body

**DUT: D2600V2; Type: D2600V2; Serial: 1125**

Communication System: UID 0, CW (0); Frequency: 2600 MHz; Duty Cycle: 1:1

Medium: MSL2600; Medium parameters used:  $f = 2600$  MHz;  $\sigma = 2.18$  S/m;  $\epsilon_r = 51.866$ ;  $\rho = 1000$  kg/m<sup>3</sup>

Phantom section: Flat Section

DASY 5 Configuration:

- Probe: EX3DV4 - SN3962; ConvF(7.26, 7.26, 7.26); Calibrated: 2016-12-19;
- Sensor-Surface: 2mm (Mechanical Surface Detection),  $z = -2.0, 31.0$
- Electronics: DAE4 Sn1267; Calibrated: 2017-02-23
- Phantom: SAM2; Type: SAM; Serial: 1913
- DASY52 52.8.8(1222); SEMCAD X 14.6.10(7331)

**Body/d=10mm, Pin=250mW/Area Scan (10x11x1):** Measurement grid:  $dx=12$ mm,  $dy=12$ mm

Maximum value of SAR (measured) = 17.6 W/kg

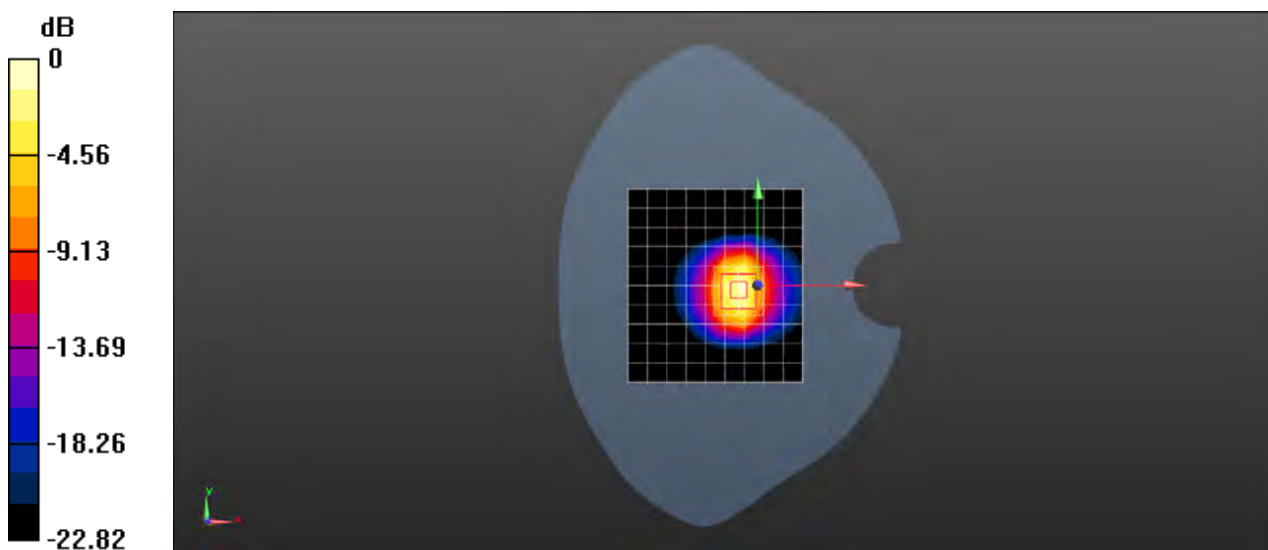
**Body/d=10mm, Pin=250mW/Zoom Scan (7x7x7) (7x7x7)/Cube 0:** Measurement grid:  $dx=5$ mm,  $dy=5$ mm,  $dz=5$ mm

Reference Value = 76.35 V/m; Power Drift = -0.13 dB

Peak SAR (extrapolated) = 27.7 W/kg

**SAR(1 g) = 13.4 W/kg; SAR(10 g) = 6.08 W/kg**

Maximum value of SAR (measured) = 20.8 W/kg



0 dB = 20.8 W/kg = 13.18 dBW/kg



Test Laboratory: SGS-SAR Lab

## System Performance Check 2600MHz Body

**DUT: D2600V2; Type: D2600V2; Serial: 1125**

Communication System: UID 0, CW (0); Frequency: 2600 MHz; Duty Cycle: 1:1

Medium: MSL2600; Medium parameters used:  $f = 2600$  MHz;  $\sigma = 2.132$  S/m;  $\epsilon_r = 52.919$ ;  $\rho = 1000$  kg/m<sup>3</sup>

Phantom section: Flat Section

DASY 5 Configuration:

- Probe: EX3DV4 - SN3789; ConvF(6.83, 6.83, 6.83); Calibrated: 2017-01-13;
- Sensor-Surface: 2mm (Mechanical Surface Detection),  $z = -2.0, 31.0$
- Electronics: DAE4 Sn719; Calibrated: 2017-07-06
- Phantom: SAM2; Type: SAM; Serial: 1913
- DASY52 52.8.8(1222); SEMCAD X 14.6.10(7331)

**Body/d=10mm, Pin=250mW/Area Scan (10x11x1):** Measurement grid:  $dx=12$ mm,  $dy=12$ mm

Maximum value of SAR (measured) = 17.2 W/kg

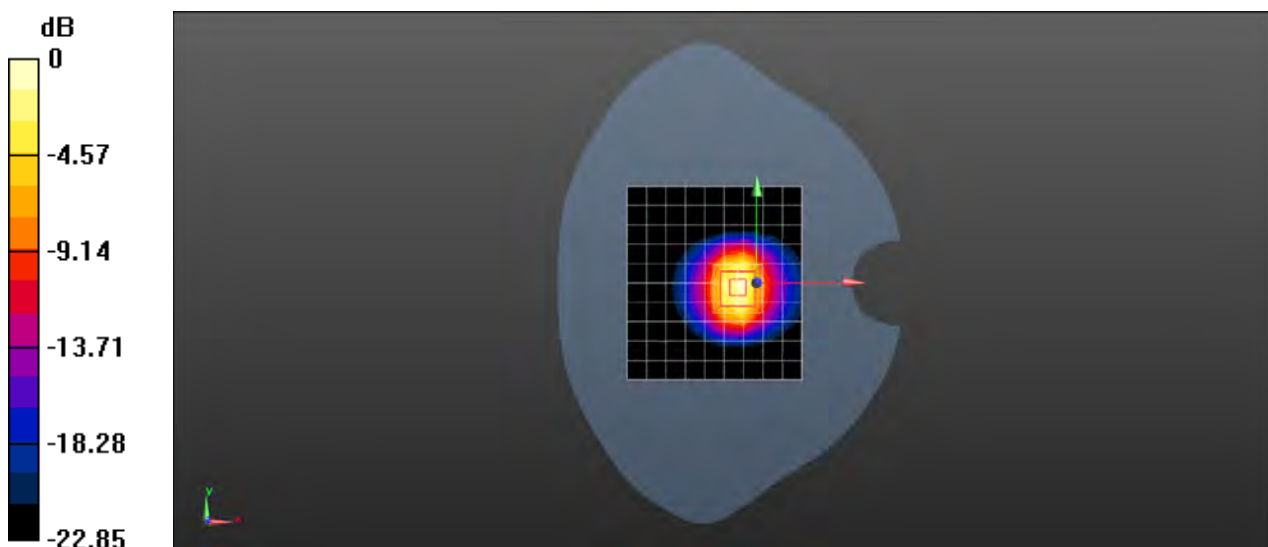
**Body/d=10mm, Pin=250mW/Zoom Scan (7x7x7) (7x7x7)/Cube 0:** Measurement grid:  $dx=5$ mm,  $dy=5$ mm,  $dz=5$ mm

Reference Value = 76.33 V/m; Power Drift = -0.13 dB

Peak SAR (extrapolated) = 27.0 W/kg

**SAR(1 g) = 13.1 W/kg; SAR(10 g) = 5.93 W/kg**

Maximum value of SAR (measured) = 20.3 W/kg



0 dB = 20.3 W/kg = 13.07 dBW/kg

Test Laboratory: SGS-SAR Lab

## System Performance Check 2600MHz Body

**DUT: D2600V2; Type: D2600V2; Serial: 1125**

Communication System: UID 0, CW (0); Frequency: 2600 MHz; Duty Cycle: 1:1

Medium: MSL2600; Medium parameters used:  $f = 2600$  MHz;  $\sigma = 2.141$  S/m;  $\epsilon_r = 52.907$ ;  $\rho = 1000$  kg/m<sup>3</sup>

Phantom section: Flat Section

DASY 5 Configuration:

- Probe: EX3DV4 - SN3962; ConvF(7.26, 7.26, 7.26); Calibrated: 2016-12-19;
- Sensor-Surface: 2mm (Mechanical Surface Detection),  $z = 1.0, 31.0$
- Electronics: DAE4 Sn1267; Calibrated: 2017-02-23
- Phantom: SAM2; Type: SAM; Serial: 1913
- DASY52 52.8.8(1222); SEMCAD X 14.6.10(7331)

**Body/d=10mm, Pin=250mW/Area Scan (10x11x1):** Measurement grid:  $dx=12$ mm,  $dy=12$ mm

Maximum value of SAR (measured) = 17.5 W/kg

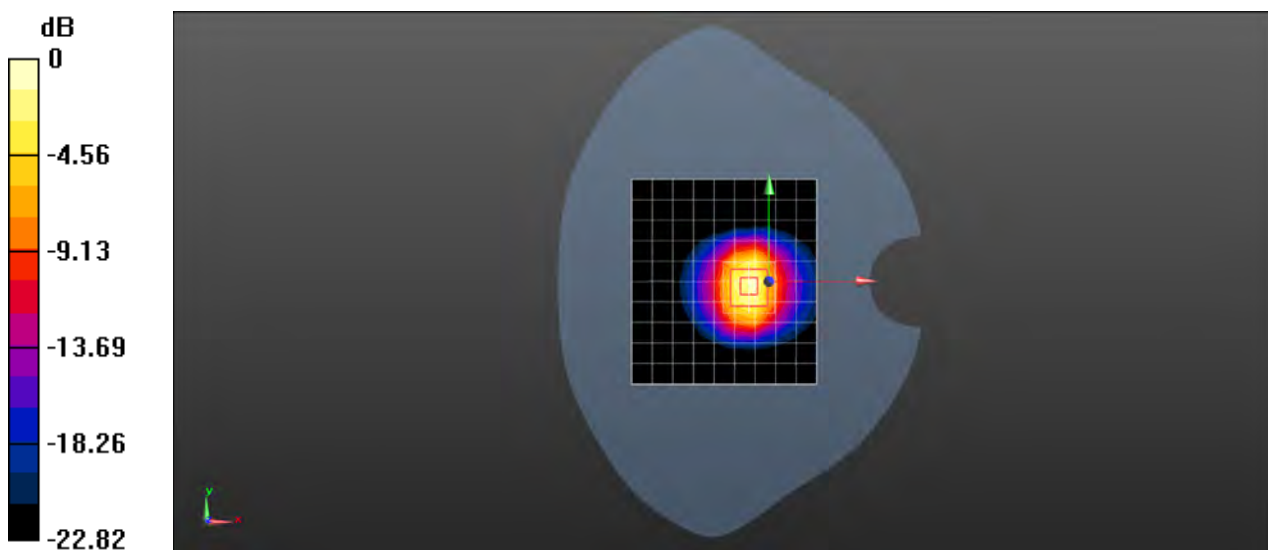
**Body/d=10mm, Pin=250mW/Zoom Scan (7x7x7) (7x7x7)/Cube 0:** Measurement grid:  $dx=5$ mm,  $dy=5$ mm,  $dz=5$ mm

Reference Value = 76.55 V/m; Power Drift = -0.03 dB

Peak SAR (extrapolated) = 27.3 W/kg

**SAR(1 g) = 13.3 W/kg; SAR(10 g) = 5.98 W/kg**

Maximum value of SAR (measured) = 20.5 W/kg



0 dB = 20.5 W/kg = 13.07 dBW/kg

Test Laboratory: SGS-SAR Lab

## System Performance Check D5.25GHz Head

**DUT: D5GHzV2; Type: D5GHzV2; Serial: 1165**

Communication System: UID 0, CW (0); Frequency: 5250 MHz; Duty Cycle: 1:1

Medium: HSL5G; Medium parameters used:  $f = 5250$  MHz;  $\sigma = 4.721$  S/m;  $\epsilon_r = 36.011$ ;  $\rho = 1000$  kg/m<sup>3</sup>

Phantom section: Flat Section

DASY 5 Configuration:

- Probe: EX3DV4 - SN3789; ConvF(5, 5, 5); Calibrated: 2017-01-13;
- Sensor-Surface: 1.4mm (Mechanical Surface Detection),  $z = 1.0, 23.0$
- Electronics: DAE4 Sn1374; Calibrated: 2017-08-31
- Phantom: SAM2; Type: SAM; Serial: 1913
- DASY52 52.8.8(1222); SEMCAD X 14.6.10(7331)

**Body/d=10mm, Pin=100mW, f=5250 MHz/Area Scan (10x10x1):** Measurement grid:

$dx=10$ mm,  $dy=10$ mm

Maximum value of SAR (measured) = 12.2 W/kg

**Body/d=10mm, Pin=100mW, f=5250 MHz/Zoom Scan (4x4x1.4mm, graded),**

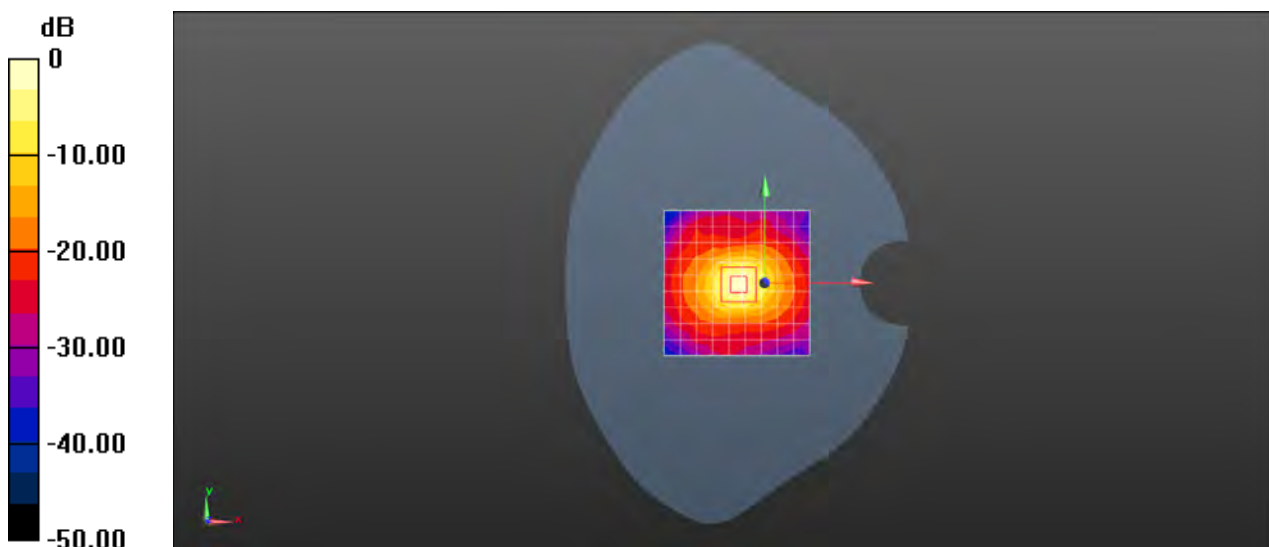
**dist=1.4mm (8x8x7)/Cube 0:** Measurement grid:  $dx=4$ mm,  $dy=4$ mm,  $dz=1.4$ mm

Reference Value = 66.58 V/m; Power Drift = -0.06 dB

Peak SAR (extrapolated) = 29.3 W/kg

**SAR(1 g) = 7.1 W/kg; SAR(10 g) = 2.02 W/kg**

Maximum value of SAR (measured) = 16.7 W/kg



0 dB = 16.7 W/kg = 12.23 dBW/kg

Test Laboratory: SGS-SAR Lab

## System Performance Check D5.25GHz Body

**DUT: D5GHzV2; Type: D5GHzV2; Serial: 1165**

Communication System: UID 0, CW (0); Frequency: 5250 MHz; Duty Cycle: 1:1

Medium: MSL5GHz; Medium parameters used:  $f = 5250$  MHz;  $\sigma = 5.426$  S/m;  $\epsilon_r = 48.122$ ;  $\rho = 1000$  kg/m<sup>3</sup>

Phantom section: Flat Section

DASY 5 Configuration:

- Probe: EX3DV4 - SN3789; ConvF(4.64, 4.64, 4.64); Calibrated: 2017-01-13;
- Sensor-Surface: 1.4mm (Mechanical Surface Detection),  $z = -2.0, 23.0$
- Electronics: DAE4 Sn719; Calibrated: 2017-07-06
- Phantom: SAM1; Type: SAM; Serial: 1912
- DASY52 52.8.8(1222); SEMCAD X 14.6.10(7331)

**Body/d=10mm, Pin=100mW, f=5250 MHz/Area Scan (10x10x1):** Measurement grid:

$dx=10$ mm,  $dy=10$ mm

Maximum value of SAR (measured) = 17.4 W/kg

**Body/d=10mm, Pin=100mW, f=5250 MHz/Zoom Scan (4x4x1.4mm, graded),**

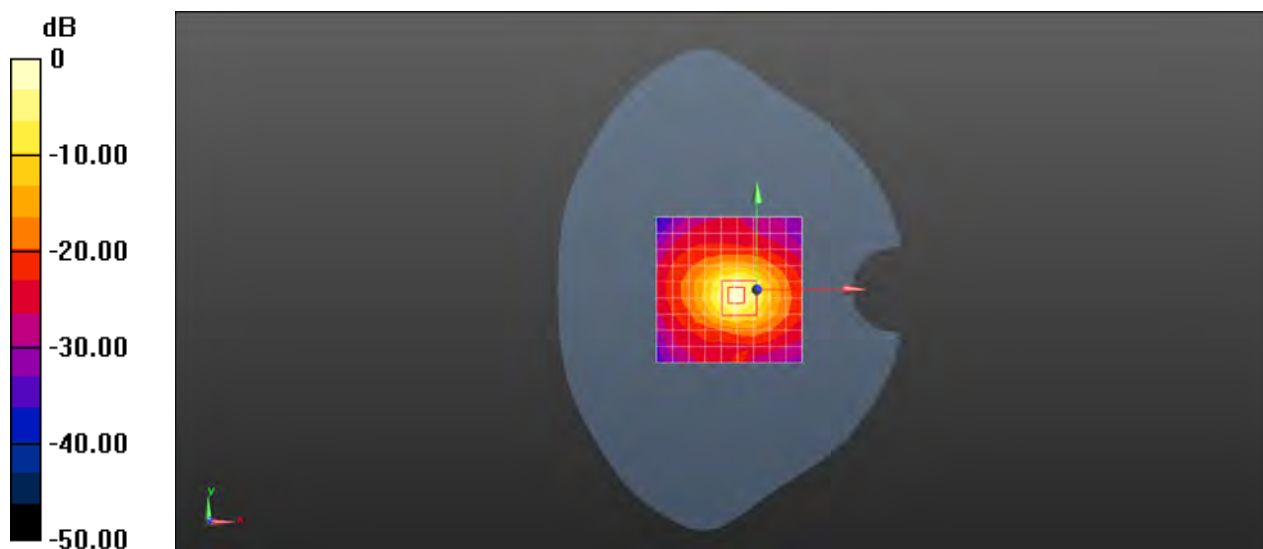
**dist=1.4mm (7x7x7)/Cube 0:** Measurement grid:  $dx=4$ mm,  $dy=4$ mm,  $dz=1.4$ mm

Reference Value = 55.64 V/m; Power Drift = -0.04 dB

Peak SAR (extrapolated) = 30.8 W/kg

**SAR(1 g) = 7.16 W/kg; SAR(10 g) = 1.95 W/kg**

Maximum value of SAR (measured) = 18.3 W/kg



0 dB = 18.3 W/kg = 12.62 dBW/kg

Test Laboratory: SGS-SAR Lab

## System Performance Check D5.25GHz Body

**DUT: D5GHzV2; Type: D5GHzV2; Serial: 1165**

Communication System: UID 0, CW (0); Frequency: 5250 MHz; Duty Cycle: 1:1

Medium: MSL5GHz; Medium parameters used:  $f = 5250$  MHz;  $\sigma = 5.382$  S/m;  $\epsilon_r = 48.322$ ;  $\rho = 1000$  kg/m<sup>3</sup>

Phantom section: Flat Section

DASY 5 Configuration:

- Probe: EX3DV4 - SN3789; ConvF(4.64, 4.64, 4.64); Calibrated: 2017-01-13;
- Sensor-Surface: 1.4mm (Mechanical Surface Detection),  $z = -2.0, 23.0$
- Electronics: DAE4 Sn719; Calibrated: 2017-07-06
- Phantom: SAM1; Type: SAM; Serial: 1912
- DASY52 52.8.8(1222); SEMCAD X 14.6.10(7331)

**Body/d=10mm, Pin=100mW, f=5250 MHz/Area Scan (10x10x1):** Measurement grid:

$dx=10$ mm,  $dy=10$ mm

Maximum value of SAR (measured) = 17.3 W/kg

**Body/d=10mm, Pin=100mW, f=5250 MHz/Zoom Scan (4x4x1.4mm, graded),**

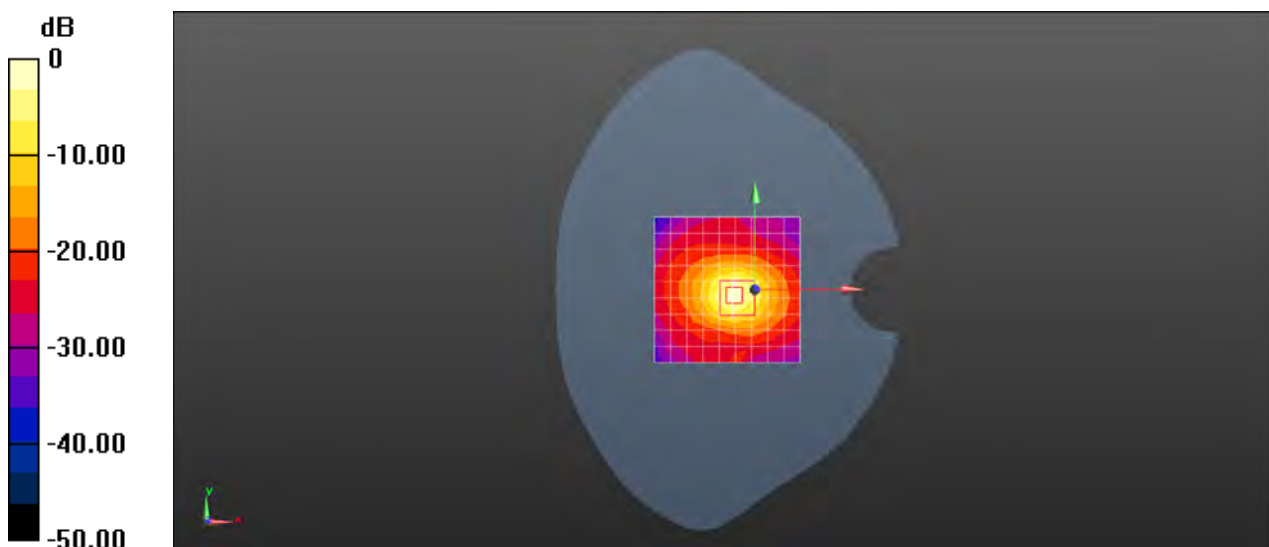
**dist=1.4mm (7x7x7)/Cube 0:** Measurement grid:  $dx=4$ mm,  $dy=4$ mm,  $dz=1.4$ mm

Reference Value = 55.64 V/m; Power Drift = -0.04 dB

Peak SAR (extrapolated) = 30.6 W/kg

**SAR(1 g) = 7.1 W/kg; SAR(10 g) = 1.94 W/kg**

Maximum value of SAR (measured) = 18.2 W/kg



0 dB = 18.2 W/kg = 12.60 dBW/kg

Test Laboratory: SGS-SAR Lab

## System Performance Check D5.6GHz Head

**DUT: D5GHzV2; Type: D5GHzV2; Serial: 1165**

Communication System: UID 0, CW (0); Frequency: 5600 MHz; Duty Cycle: 1:1

Medium: HSL5G; Medium parameters used:  $f = 5600$  MHz;  $\sigma = 5.107$  S/m;  $\epsilon_r = 35.059$ ;  $\rho = 1000$  kg/m<sup>3</sup>

Phantom section: Flat Section

DASY 5 Configuration:

- Probe: EX3DV4 - SN3789; ConvF(4.48, 4.48, 4.48); Calibrated: 2017-01-13;
- Sensor-Surface: 1.4mm (Mechanical Surface Detection),  $z = 1.0, 23.0$
- Electronics: DAE4 Sn1374; Calibrated: 2017-08-31
- Phantom: SAM2; Type: SAM; Serial: 1913
- DASY52 52.8.8(1222); SEMCAD X 14.6.10(7331)

**Body/d=10mm, Pin=100mW, f=5600 MHz/Area Scan (10x10x1):** Measurement grid:

$dx=10$ mm,  $dy=10$ mm

Maximum value of SAR (measured) = 16.4 W/kg

**Body/d=10mm, Pin=100mW, f=5600 MHz/Zoom Scan (4x4x1.4mm, graded),**

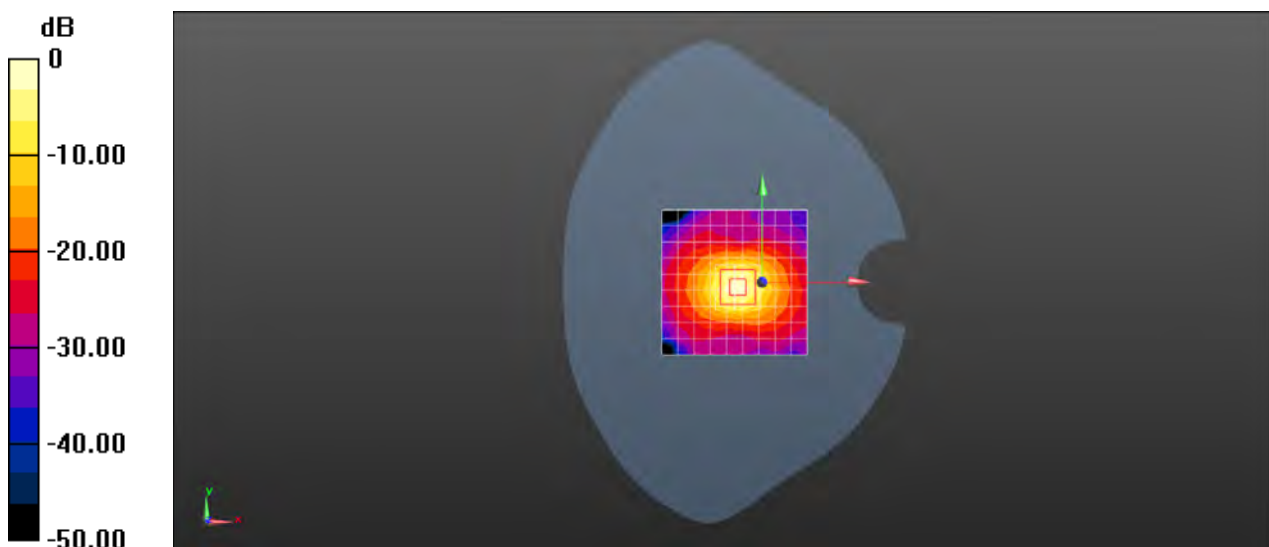
**dist=1.4mm (8x8x7)/Cube 0:** Measurement grid:  $dx=4$ mm,  $dy=4$ mm,  $dz=1.4$ mm

Reference Value = 63.24 V/m; Power Drift = -0.11 dB

Peak SAR (extrapolated) = 34.7 W/kg

**SAR(1 g) = 7.67 W/kg; SAR(10 g) = 2.16 W/kg**

Maximum value of SAR (measured) = 19.2 W/kg



0 dB = 19.2 W/kg = 12.83 dBW/kg

Test Laboratory: SGS-SAR Lab

## System Performance Check D5.6GHz Body

**DUT: D5GHzV2; Type: D5GHzV2; Serial: 1165**

Communication System: UID 0, CW (0); Frequency: 5600 MHz; Duty Cycle: 1:1

Medium: MSL5GHz; Medium parameters used:  $f = 5600$  MHz;  $\sigma = 5.85$  S/m;  $\epsilon_r = 47.19$ ;  $\rho = 1000$  kg/m<sup>3</sup>

Phantom section: Flat Section

DASY 5 Configuration:

- Probe: EX3DV4 - SN3789; ConvF(3.86, 3.86, 3.86); Calibrated: 2017-01-13;
- Sensor-Surface: 1.4mm (Mechanical Surface Detection),  $z = -2.0, 23.0$
- Electronics: DAE4 Sn719; Calibrated: 2017-07-06
- Phantom: SAM1; Type: SAM; Serial: 1912
- DASY52 52.8.8(1222); SEMCAD X 14.6.10(7331)

**Body/d=10mm, Pin=100mW, f=5600 MHz/Area Scan (10x10x1):** Measurement grid:

$dx=10$ mm,  $dy=10$ mm

Maximum value of SAR (measured) = 20.2 W/kg

**Body/d=10mm, Pin=100mW, f=5600 MHz/Zoom Scan (4x4x1.4mm, graded),**

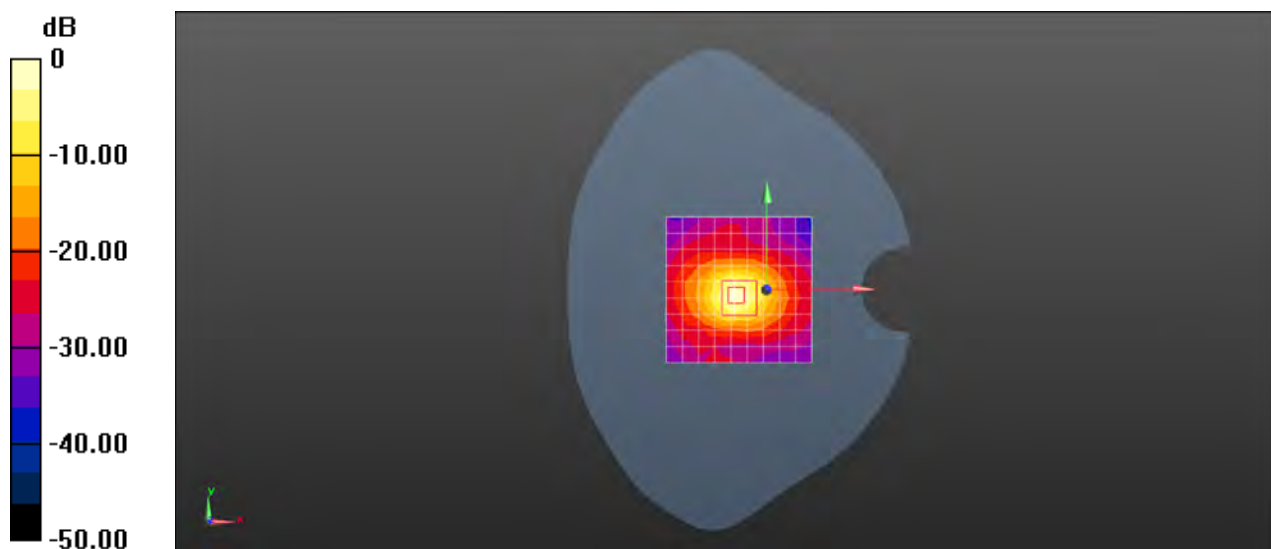
**dist=1.4mm (7x7x7)/Cube 0:** Measurement grid:  $dx=4$ mm,  $dy=4$ mm,  $dz=1.4$ mm

Reference Value = 62.97 V/m; Power Drift = -0.00 dB

Peak SAR (extrapolated) = 40.8 W/kg

**SAR(1 g) = 8.5 W/kg; SAR(10 g) = 2.3 W/kg**

Maximum value of SAR (measured) = 22.6 W/kg



0 dB = 22.6 W/kg = 13.54 dBW/kg

Test Laboratory: SGS-SAR Lab

## System Performance Check D5.6GHz Body

**DUT: D5GHzV2; Type: D5GHzV2; Serial: 1165**

Communication System: UID 0, CW (0); Frequency: 5600 MHz; Duty Cycle: 1:1

Medium: MSL5GHz; Medium parameters used:  $f = 5600$  MHz;  $\sigma = 5.803$  S/m;  $\epsilon_r = 47.219$ ;  $\rho = 1000$  kg/m<sup>3</sup>

Phantom section: Flat Section

DASY 5 Configuration:

- Probe: EX3DV4 - SN3789; ConvF(3.86, 3.86, 3.86); Calibrated: 2017-01-13;
- Sensor-Surface: 1.4mm (Mechanical Surface Detection),  $z = -2.0, 23.0$
- Electronics: DAE4 Sn719; Calibrated: 2017-07-06
- Phantom: SAM1; Type: SAM; Serial: 1912
- DASY52 52.8.8(1222); SEMCAD X 14.6.10(7331)

**Body/d=10mm, Pin=100mW, f=5600 MHz/Area Scan (10x10x1):** Measurement grid:

$dx=10$ mm,  $dy=10$ mm

Maximum value of SAR (measured) = 20.1 W/kg

**Body/d=10mm, Pin=100mW, f=5600 MHz/Zoom Scan (4x4x1.4mm, graded),**

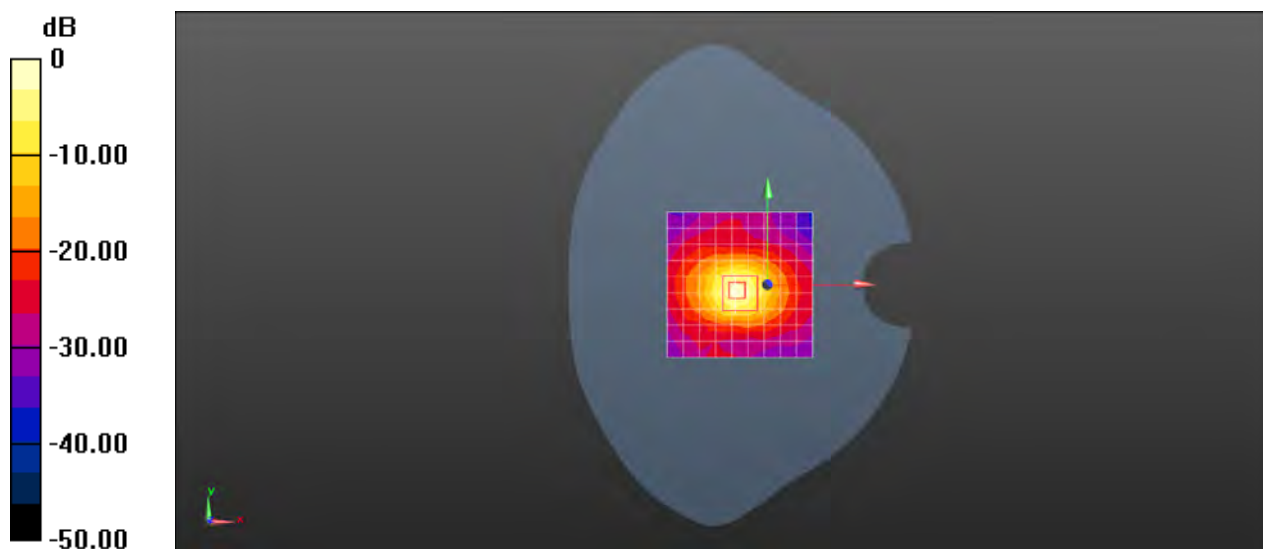
**dist=1.4mm (7x7x7)/Cube 0:** Measurement grid:  $dx=4$ mm,  $dy=4$ mm,  $dz=1.4$ mm

Reference Value = 62.97 V/m; Power Drift = -0.11 dB

Peak SAR (extrapolated) = 40.4 W/kg

**SAR(1 g) = 8.43 W/kg; SAR(10 g) = 2.28 W/kg**

Maximum value of SAR (measured) = 22.4 W/kg



0 dB = 22.4 W/kg = 13.50 dBW/kg



Test Laboratory: SGS-SAR Lab

## System Performance Check D5.75GHz Head

**DUT: D5GHzV2; Type: D5GHzV2; Serial: 1165**

Communication System: UID 0, CW (0); Frequency: 5750 MHz; Duty Cycle: 1:1

Medium: HSL5G; Medium parameters used:  $f = 5750$  MHz;  $\sigma = 5.279$  S/m;  $\epsilon_r = 34.695$ ;  $\rho = 1000$  kg/m<sup>3</sup>

Phantom section: Flat Section

DASY 5 Configuration:

- Probe: EX3DV4 - SN3789; ConvF(4.48, 4.48, 4.48); Calibrated: 2017-01-13;
- Sensor-Surface: 1.4mm (Mechanical Surface Detection),  $z = 1.0, 23.0$
- Electronics: DAE4 Sn1374; Calibrated: 2017-08-31
- Phantom: SAM2; Type: SAM; Serial: 1913
- DASY52 52.8.8(1222); SEMCAD X 14.6.10(7331)

**Body/d=10mm, Pin=100mW, f=5750 MHz/Area Scan (10x10x1):** Measurement grid:

$dx=10$ mm,  $dy=10$ mm

Maximum value of SAR (measured) = 17.7 W/kg

**Body/d=10mm, Pin=100mW, f=5750 MHz/Zoom Scan (4x4x1.4mm, graded),**

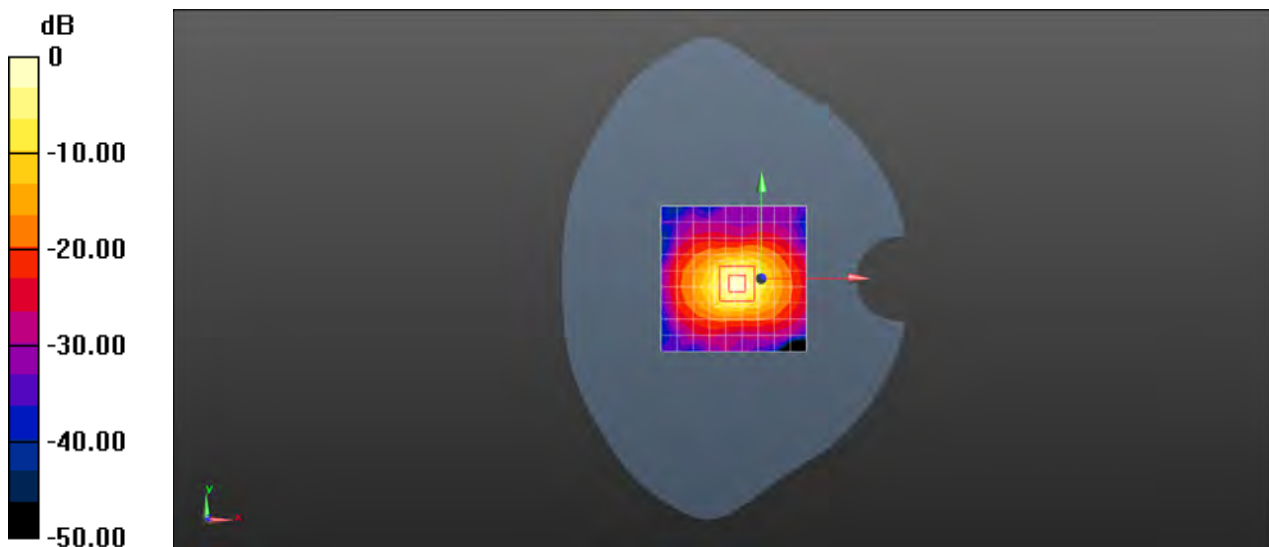
**dist=1.4mm (8x8x7)/Cube 0:** Measurement grid:  $dx=4$ mm,  $dy=4$ mm,  $dz=1.4$ mm

Reference Value = 62.31 V/m; Power Drift = -0.08 dB

Peak SAR (extrapolated) = 35.2 W/kg

**SAR(1 g) = 7.74 W/kg; SAR(10 g) = 2.21 W/kg**

Maximum value of SAR (measured) = 18.9 W/kg



0 dB = 18.9 W/kg = 12.76 dBW/kg

Test Laboratory: SGS-SAR Lab

## System Performance Check D5.75GHz Body

**DUT: D5GHzV2; Type: D5GHzV2; Serial: 1165**

Communication System: UID 0, CW (0); Frequency: 5750 MHz; Duty Cycle: 1:1

Medium: MSL5GHz; Medium parameters used:  $f = 5750$  MHz;  $\sigma = 6.017$  S/m;  $\epsilon_r = 46.85$ ;  $\rho = 1000$  kg/m<sup>3</sup>

Phantom section: Flat Section

DASY 5 Configuration:

- Probe: EX3DV4 - SN3789; ConvF(4.27, 4.27, 4.27); Calibrated: 2017-01-13;
- Sensor-Surface: 1.4mm (Mechanical Surface Detection),  $z = -2.0, 23.0$
- Electronics: DAE4 Sn719; Calibrated: 2017-07-06
- Phantom: SAM1; Type: SAM; Serial: 1912
- DASY52 52.8.8(1222); SEMCAD X 14.6.10(7331)

**Body/d=10mm, Pin=100mW, f=5750 MHz/Area Scan (10x10x1):** Measurement grid:

$dx=10$ mm,  $dy=10$ mm

Maximum value of SAR (measured) = 15.9 W/kg

**Body/d=10mm, Pin=100mW, f=5750 MHz/Zoom Scan (4x4x1.4mm, graded),**

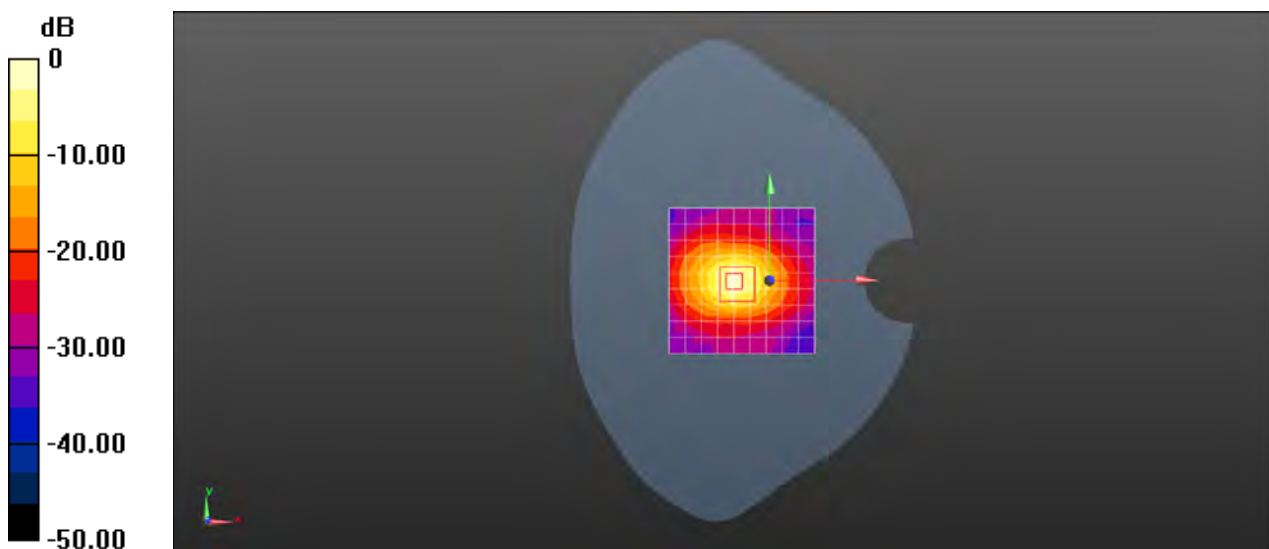
**dist=1.4mm (7x7x7)/Cube 0:** Measurement grid:  $dx=4$ mm,  $dy=4$ mm,  $dz=1.4$ mm

Reference Value = 59.99 V/m; Power Drift = -0.06 dB

Peak SAR (extrapolated) = 34.9 W/kg

**SAR(1 g) = 7.74 W/kg; SAR(10 g) = 2.11 W/kg**

Maximum value of SAR (measured) = 19.6 W/kg



0 dB = 19.6 W/kg = 12.92 dBW/kg

Test Laboratory: SGS-SAR Lab

## System Performance Check D5.75GHz Body

**DUT: D5GHzV2; Type: D5GHzV2; Serial: 1165**

Communication System: UID 0, CW (0); Frequency: 5750 MHz; Duty Cycle: 1:1

Medium: MSL5GHz; Medium parameters used:  $f = 5750$  MHz;  $\sigma = 5.969$  S/m;  $\epsilon_r = 46.985$ ;  $\rho = 1000$  kg/m<sup>3</sup>

Phantom section: Flat Section

DASY 5 Configuration:

- Probe: EX3DV4 - SN3789; ConvF(4.27, 4.27, 4.27); Calibrated: 2017-01-13;
- Sensor-Surface: 1.4mm (Mechanical Surface Detection),  $z = -2.0, 23.0$
- Electronics: DAE4 Sn719; Calibrated: 2017-07-06
- Phantom: SAM1; Type: SAM; Serial: 1912
- DASY52 52.8.8(1222); SEMCAD X 14.6.10(7331)

**Body/d=10mm, Pin=100mW, f=5750 MHz/Area Scan (10x10x1):** Measurement grid:

$dx=10$ mm,  $dy=10$ mm

Maximum value of SAR (measured) = 15.8 W/kg

**Body/d=10mm, Pin=100mW, f=5750 MHz/Zoom Scan (4x4x1.4mm, graded),**

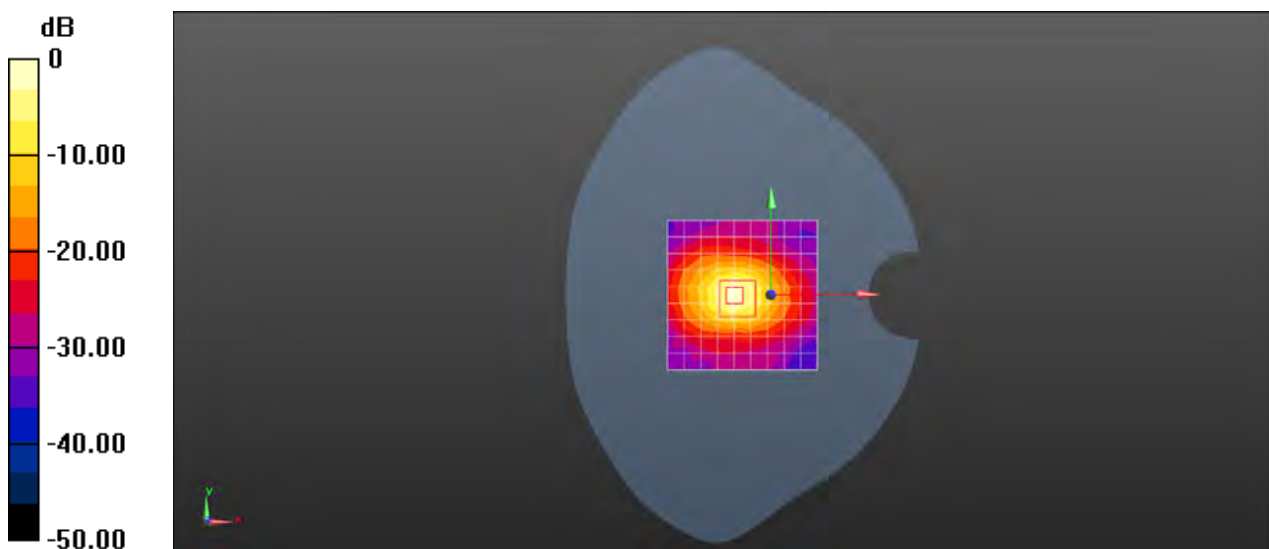
**dist=1.4mm (7x7x7)/Cube 0:** Measurement grid:  $dx=4$ mm,  $dy=4$ mm,  $dz=1.4$ mm

Reference Value = 59.99 V/m; Power Drift = -0.06 dB

Peak SAR (extrapolated) = 34.6 W/kg

**SAR(1 g) = 7.68 W/kg; SAR(10 g) = 2.1 W/kg**

Maximum value of SAR (measured) = 19.5 W/kg



0 dB = 19.5 W/kg = 12.90 dBW/kg