

4788730182.1-SAR-2 System Performance Check-2450MHz-Bdoy**DUT: Dipole 2450 MHz D2450V2; Type: D2450V2; Serial: 977**

Communication System: UID 0, CW (0); Communication System Band: D2450 (2450.0 MHz); Frequency: 2450 MHz;

Medium parameters used: $f = 2450$ MHz; $\sigma = 2.034$ S/m; $\epsilon_r = 51.648$; $\rho = 1000$ kg/m³

Phantom section: Flat Section

DASY Configuration:

- Probe: EX3DV4 - SN7383; ConvF(7.82, 7.82, 7.82); Calibrated: 2017/12/14;
- Sensor-Surface: 3mm (Mechanical Surface Detection), $z = 1.0, 31.0$
- Electronics: DAE3 Sn427; Calibrated: 2017/12/4
- Phantom: ELI v5.0; Type: QDOVA002AA; Serial: 1235

Configuration/D2450V2/Area Scan (6x7x1): Measurement grid: $dx=12$ mm, $dy=12$ mm

Maximum value of SAR (measured) = 13.7 W/kg

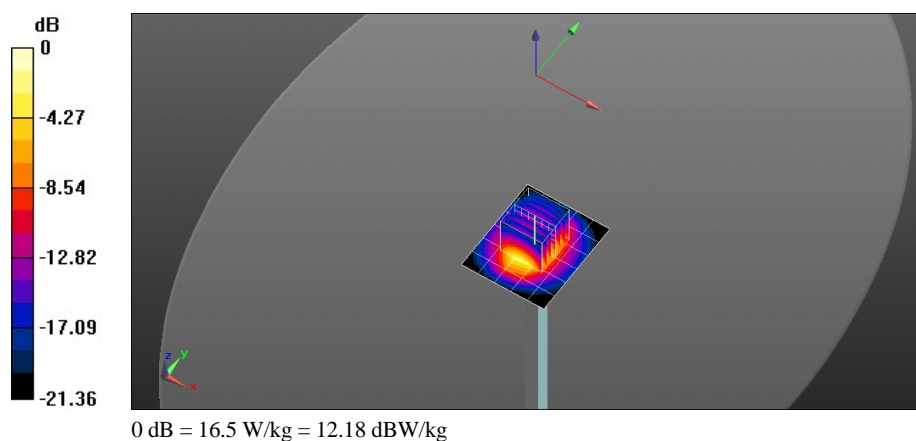
Configuration/D2450V2/Zoom Scan (7x7x7)/Cube 0: Measurement grid: $dx=5$ mm, $dy=5$ mm, $dz=5$ mm

Reference Value = 84.42 V/m; Power Drift = 0.04 dB

Peak SAR (extrapolated) = 24.4 W/kg

SAR(1 g) = 12.5 W/kg; SAR(10 g) = 5.85 W/kg

Maximum value of SAR (measured) = 16.5 W/kg



4788730182.1-SAR-2 System Performance Check-D5GHz_5250MHz-Body**DUT: Dipole D5GHzV2; Type: D5GHzV2; Serial: 1231**

Communication System: UID 0, CW (0); Communication System Band: D5GHz (5000.0 - 6000.0 MHz); Frequency: 5250 MHz;

Medium parameters used: $f = 5250$ MHz; $\sigma = 5.424$ S/m; $\epsilon_r = 48.343$; $\rho = 1000$ kg/m³

Phantom section: Flat Section

DASY Configuration:

- Probe: EX3DV4 - SN7383; ConvF(5.44, 5.44, 5.44); Calibrated: 2017/12/14;
- Sensor-Surface: 1.4mm (Mechanical Surface Detection), $z = 1.0, 25.0$
- Electronics: DAE3 Sn427; Calibrated: 2017/12/4
- Phantom: ELI v5.0; Type: QDOVA002AA; Serial: 1235

System Performance Check with D5GHzV2 Dipole (graded grid)/d=10mm, Pin=100mW, f=5250 MHz/Area Scan (6x6x1):

Measurement grid: dx=10mm, dy=10mm

Maximum value of SAR (measured) = 11.2 W/kg

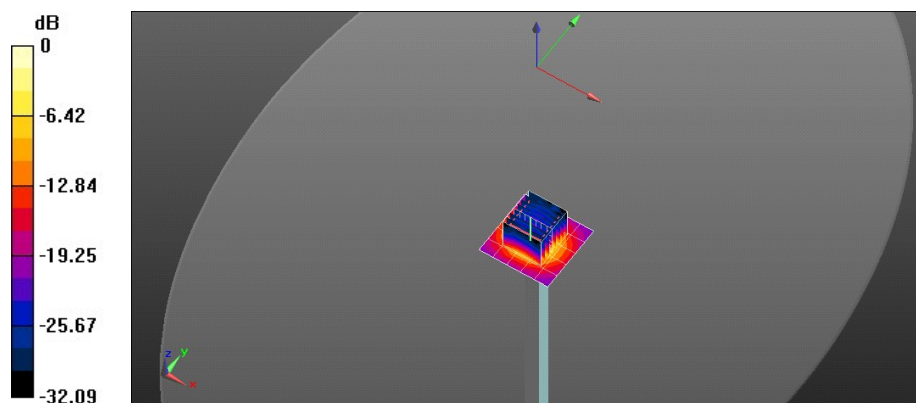
System Performance Check with D5GHzV2 Dipole (graded grid)/d=10mm, Pin=100mW, f=5250 MHz/Zoom Scan (4x4x1.4mm, graded), dist=1.4mm (8x8x7)/Cube 0: Measurement grid: dx=4mm, dy=4mm, dz=1.4mm

Reference Value = 61.59 V/m; Power Drift = 0.13 dB

Peak SAR (extrapolated) = 29.1 W/kg

SAR(1 g) = 7.29 W/kg; SAR(10 g) = 2.07 W/kg

Maximum value of SAR (measured) = 16.9 W/kg



0 dB = 16.9 W/kg = 12.29 dBW/kg

4788730182.1-SAR-2 System Performance Check-D5GHz_5600MHz-Body**DUT: Dipole D5GHzV2; Type: D5GHzV2; Serial: 1231**

Communication System: UID 0, CW (0); Communication System Band: D5GHz (5000.0 - 6000.0 MHz); Frequency: 5600 MHz;
 Medium parameters used: $f = 5600$ MHz; $\sigma = 5.94$ S/m; $\epsilon_r = 47.57$; $\rho = 1000$ kg/m³

Phantom section: Flat Section

DASY Configuration:

- Probe: EX3DV4 - SN7383; ConvF(4.42, 4.42, 4.42); Calibrated: 2017/12/14;
- Sensor-Surface: 1.4mm (Mechanical Surface Detection), $z = 1.0, 25.0$
- Electronics: DAE3 Sn427; Calibrated: 2017/12/4
- Phantom: ELI v5.0; Type: QDOVA002AA; Serial: 1235

System Performance Check with D5GHzV2 Dipole (graded grid)/d=10mm, Pin=100mW, f=5600 MHz/Area Scan (6x6x1):

Measurement grid: dx=10mm, dy=10mm

Maximum value of SAR (measured) = 14.3 W/kg

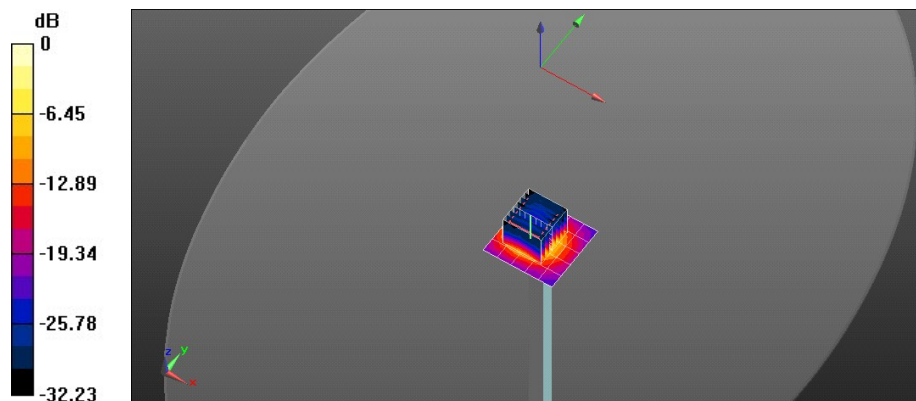
System Performance Check with D5GHzV2 Dipole (graded grid)/d=10mm, Pin=100mW, f=5600 MHz/Zoom Scan (4x4x1.4mm, graded), dist=1.4mm (8x8x7)/Cube 0: Measurement grid: dx=4mm, dy=4mm, dz=1.4mm

Reference Value = 56.16 V/m; Power Drift = 0.06 dB

Peak SAR (extrapolated) = 32.2 W/kg

SAR(1 g) = 7.75 W/kg; SAR(10 g) = 2.19 W/kg

Maximum value of SAR (measured) = 18.6 W/kg



4788730182.1-SAR-2 System Performance Check-D5GHz_5750MHz-Body**DUT: Dipole D5GHzV2; Type: D5GHzV2; Serial: 1231**

Communication System: UID 0, CW (0); Communication System Band: D5GHz (5000.0 - 6000.0 MHz); Frequency: 5750 MHz;

Medium parameters used: $f = 5750$ MHz; $\sigma = 6.002$ S/m; $\epsilon_r = 47.298$; $\rho = 1000$ kg/m³

Phantom section: Flat Section

DASY Configuration:

- Probe: EX3DV4 - SN7383; ConvF(4.58, 4.58, 4.58); Calibrated: 2017/12/14;
- Sensor-Surface: 1.4mm (Mechanical Surface Detection), $z = 1.0, 25.0$
- Electronics: DAE3 Sn427; Calibrated: 2017/12/4
- Phantom: ELI v5.0; Type: QDOVA002AA; Serial: 1235

System Performance Check with D5GHzV2 Dipole (graded grid)/d=10mm, Pin=100mW, f=5750 MHz/Area Scan (6x6x1):

Measurement grid: dx=10mm, dy=10mm

Maximum value of SAR (measured) = 12.7 W/kg

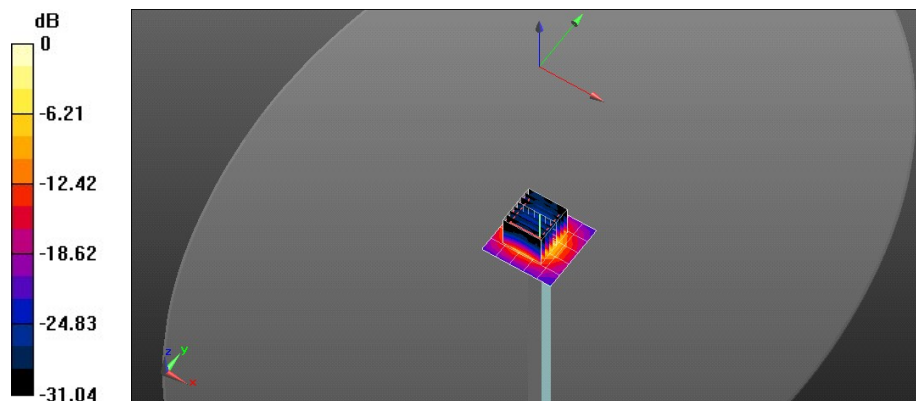
System Performance Check with D5GHzV2 Dipole (graded grid)/d=10mm, Pin=100mW, f=5750 MHz/Zoom Scan (4x4x1.4mm, graded), dist=1.4mm (8x8x7)/Cube 0: Measurement grid: dx=4mm, dy=4mm, dz=1.4mm

Reference Value = 57.72 V/m; Power Drift = 0.18 dB

Peak SAR (extrapolated) = 32.5 W/kg

SAR(1 g) = 7.52 W/kg; SAR(10 g) = 2.12 W/kg

Maximum value of SAR (measured) = 18.2 W/kg



0 dB = 18.2 W/kg = 12.61 dBW/kg