

TEST REPORT

Product Name: Global LTE Cat.M1/LTE Cat.NB2/2G
 Data-Only Module
Trade Mark: CINTERION
Model No. / HVIN: EXS82-W
Report Number: 191019004RFM-1
Test Standards: FCC 47 CFR Part 22 Subpart H,
 FCC 47 CFR Part 24 Subpart E,
 RSS-132 Issue 3, RSS-133 Issue 6
 RSS-Gen Issue 5
FCC ID: QIPEXS82-W
IC: 7830A-EXS82W
Test Result: PASS
Date of Issue: December 21, 2019

Prepared for:

Gemalto M2M GmbH
Siemensdamm 50 Berlin, 13629 Germany

Prepared by:

Shenzhen UnionTrust Quality and Technology Co., Ltd.
16/F, Block A, Building 6, Baoneng Science and Technology Park,
Qingxiang Road No.1, Longhua New District, Shenzhen, China
TEL: +86-755-2823 0888
FAX: +86-755-2823 0886

Prepared by: Henry Lu

Henry Lu
Team Leader

Reviewed by: Kevin Liang

Kevin Liang
Assistant Manager

Approved by: Billy Li

Billy Li
Technical Director

Date: December 21, 2019

Shenzhen UnionTrust Quality and Technology Co., Ltd.

Version

Version No.	Date	Description
V1.0	December 21, 2019	Original



CONTENTS

1. GENERAL INFORMATION	4
1.1 CLIENT INFORMATION	4
1.2 EUT INFORMATION	4
1.2.1 GENERAL DESCRIPTION OF EUT	4
1.2.2 DESCRIPTION OF ACCESSORIES.....	4
1.3 PRODUCT SPECIFICATION SUBJECTIVE TO THIS STANDARD	4
1.4 DESCRIPTION OF SUPPORT UNITS	5
1.5 TEST LOCATION	5
1.6 TEST FACILITY	5
1.7 DEVIATION FROM STANDARDS	5
1.8 ABNORMALITIES FROM STANDARD CONDITIONS	6
1.9 OTHER INFORMATION REQUESTED BY THE CUSTOMER	6
1.10 MEASUREMENT UNCERTAINTY	6
2. TEST SUMMARY	7
3. EQUIPMENT LIST	8
4. TEST CONFIGURATION	9
4.1 ENVIRONMENTAL CONDITIONS FOR TESTING	9
4.2 TEST SETUP	10
4.2.1 FOR RADIATED EMISSIONS TEST SETUP	10
4.2.2 FOR CONDUCTED RF TEST SETUP	11
4.3 TEST CHANNELS	12
4.4 SYSTEM TEST CONFIGURATION	13
4.5 PRE-SCAN	13
5. RADIO TECHNICAL REQUIREMENTS SPECIFICATION	14
5.1 REFERENCE DOCUMENTS FOR TESTING	14
5.2 MAXIMUM ERP/EIRP	14
5.3 CONDUCTED OUTPUT POWER	16
5.4 PEAK-TO-AVERAGE RATIO	17
5.5 99%&26DB BANDWIDTH	18
5.6 BAND EDGE AT ANTENNA TERMINALS	20
5.7 SPURIOUS EMISSIONS AT ANTENNA TERMINALS	22
5.8 FIELD STRENGTH OF SPURIOUS RADIATION	25
5.9 FREQUENCY STABILITY	27
APPENDIX 1 PHOTOS OF TEST SETUP	29
APPENDIX 2 PHOTOS OF EUT CONSTRUCTIONAL DETAILS	29

1. GENERAL INFORMATION

1.1 CLIENT INFORMATION

Applicant:	Gemalto M2M GmbH
Address of Applicant:	Siemensdamm 50 Berlin, 13629 Germany
Manufacturer:	Gemalto M2M GmbH
Address of Manufacturer:	Siemensdamm 50 Berlin, 13629 Germany

1.2 EUT INFORMATION

1.2.1 General Description of EUT

Product Name:	Global LTE Cat.M1/LTE Cat.NB2/2G Data-Only Module	
Model No. / HVIN:	EXS82-W (See Note)	
Trade Mark:	CINTERION	
DUT Stage:	Identical Prototype	
EUT Supports Function:	GSM Bands:	GSM 850/ PCS 1900
	E-UTRA Bands:	Band 2/ Band 4/ Band 5/ Band 12/ Band 13/ Band 25/ Band 26/ Band 66/ Band 71
Sample Received Date:	September 19, 2019	
Sample Tested Date:	September 19, 2019 to December 2, 2019	
Note:	This product EXS82-W has two forms of SIM and ESIM.	

1.2.2 Description of Accessories

None.

1.3 PRODUCT SPECIFICATION SUBJECTIVE TO THIS STANDARD

Support Networks:	GPRS	
Type of Modulation:	GPRS:	GMSK
Frequency Range:	GPRS 850:	824.2-848.8 MHz
	GPRS 1900:	1850.2-1909.8 MHz
Max RF Output Power:	GPRS 850:	35.84dBm
	GPRS 1900:	28.51dBm
Emission Designator:	GPRS 850:	247KGXW
	GPRS 1900:	245KGXW
Antenna Type:	External Antenna	
Antenna Gain:	GSM 850:	5.17 dBi
	PCS 1900:	2.17 dBi
GPRS Class:	Class 10	
Normal Test Voltage:	3.8 Vdc	
Extreme Test Voltage:	3.3 to 4.6Vdc	
Extreme Test Temperature:	-40 °C to +60 °C	

1.4 DESCRIPTION OF SUPPORT UNITS

The EUT has been tested with associated equipment below.

1) Support Equipment

Description	Manufacturer	Model No.	Serial Number	Supplied by
Antenna	SMARTEQ	MiniMag	--	Applicant
Adapter	Lenovo	HKA02412020-3K	N/A	Applicant
PCB board	N/A	W30880-Q9812-X-2	N/A	Applicant

2) Support Cable

Cable No.	Description	Connector	Length	Supplied by
1	Antenna Cable	SMA	0.3 Meter	UnionTrust

1.5 TEST LOCATION

Shenzhen UnionTrust Quality and Technology Co., Ltd.

Address: 16/F, Block A, Building 6, Baoneng Science and Technology Park, Qingxiang Road No.1, Longhua New District, Shenzhen, China 518109
 Telephone: +86 (0) 755 2823 0888
 Fax: +86 (0) 755 2823 0886

1.6 TEST FACILITY

The test facility is recognized, certified, or accredited by the following organizations:

CNAS-Lab Code: L9069

The measuring equipment utilized to perform the tests documented in this report has been calibrated once a year or in accordance with the manufacturer's recommendations, and is traceable under the ISO/IEC/EN 17025 to international or national standards. Equipment has been calibrated by accredited calibration laboratories.

A2LA-Lab Certificate No.: 4312.01

Shenzhen UnionTrust Quality and Technology Co., Ltd. has been accredited by A2LA for technical competence in the field of electrical testing, and proved to be in compliance with ISO/IEC 17025: 2005 General Requirements for the Competence of Testing and Calibration Laboratories and any additional program requirements in the identified field of testing.

ISED Wireless Device Testing Laboratories

CAB identifier: CN0032

FCC Accredited Lab.

Designation Number: CN1194

Test Firm Registration Number: 259480

1.7 DEVIATION FROM STANDARDS

None.

Shenzhen UnionTrust Quality and Technology Co., Ltd.

Address: 16/F, Block A, Building 6, Baoneng Science and Technology Park, Qingxiang Road No.1, Longhua New District, Shenzhen, China
 Tel: +86-755-28230888 Fax: +86-755-28230886 E-mail: info@uttlab.com [Http://www.uttlab.com](http://www.uttlab.com)
 UTR-RF-RSS2G-V1.0

1.8 ABNORMALITIES FROM STANDARD CONDITIONS

None.

1.9 OTHER INFORMATION REQUESTED BY THE CUSTOMER

None.

1.10 MEASUREMENT UNCERTAINTY

Where relevant, the following measurement uncertainty levels have been estimated for tests performed on the Product as specified in CISPR 16-4-2. This uncertainty represents an expanded uncertainty expressed at approximately the 95% confidence level using a coverage factor of k=2.

No.	Item	Measurement Uncertainty
1	Conducted emission 9KHz-150KHz	±3.8 dB
2	Conducted emission 150KHz-30MHz	±3.4 dB
3	Radiated emission 9KHz-30MHz	±4.9 dB
4	Radiated emission 30MHz-1GHz	±4.7 dB
5	Radiated emission 1GHz-18GHz	±5.1 dB
6	Radiated emission 18GHz-26GHz	±5.2 dB
7	Radiated emission 26GHz-40GHz	±5.2 dB

2. TEST SUMMARY

FCC 47 CFR Part 22 Subpart H Test Cases			
Test Item	Test Requirement	Test Method	Result
Effective Radiated Power (ERP)	FCC 47 CFR Part 2.1046(a) & FCC 47 CFR Part 22.913(a) RSS-132 Issue 3, Section 5.4	ANSI C63.26-2015 & KDB 971168 D01v03r01	PASS
Conducted Output Power	FCC 47 CFR Part 2.1046(a) & FCC 47 CFR Part 22.913(a) RSS-132 Issue 3, Section 5.4	ANSI C63.26-2015 & KDB 971168 D01v03r01	PASS
Peak-to-average ratio	FCC 47 CFR Part 22.913(a) RSS-132 Issue 3, Section 5.4	ANSI C63.26-2015 & KDB 971168 D01v03r01	PASS
99%&26dB Bandwidth	FCC 47 CFR Part 2.1049(h) RSS-Gen Issue 5, Section 6.7	ANSI C63.26-2015 & KDB 971168 D01v03r01	PASS
Band Edge at antenna terminals	FCC 47 CFR Part 2.1051 & FCC 47 CFR Part 22.917(a) RSS-132 Issue 3, Section 5.5	ANSI C63.26-2015 & KDB 971168 D01v03r01	PASS
Spurious emissions at antenna terminals	FCC 47 CFR Part 2.1051 & FCC 47 CFR Part 22.917(a)(b) RSS-132 Issue 3, Section 5.5	ANSI C63.26-2015 & KDB 971168 D01v03r01	PASS
Field strength of spurious radiation	FCC 47 CFR Part 2.1053 & FCC 47 CFR Part 22.917(a)(b) RSS-132 Issue 3, Section 5.5	ANSI C63.26-2015 & KDB 971168 D01v03r01	PASS
Frequency stability	FCC 47 CFR Part 2.1055 & FCC 47 CFR Part 22.355 RSS-132 Issue 3, Section 5.3	ANSI C63.26-2015 & KDB 971168 D01v03r01	PASS

FCC 47 CFR Part 24 Subpart E Test Cases			
Test Item	Test Requirement	Test Method	Result
Equivalent Isotropic Radiated Power (EIRP)	FCC 47 CFR Part 2.1046(a) & FCC 47 CFR Part 24.232(c) RSS-133 Issue 6, Section 6.4	ANSI C63.26-2015 & KDB 971168 D01v03r01	PASS
Conducted Output Power	FCC 47 CFR Part 2.1046(a) & FCC 47 CFR Part 24.232(c) RSS-133 Issue 6, Section 6.4	ANSI C63.26-2015 & KDB 971168 D01v03r01	PASS
Peak-to-average ratio	FCC 47 CFR Part 24.232(d) RSS-133 Issue 6, Section 6.4	KDB 971168 D01v03r01	PASS
99%&26dB Bandwidth	FCC 47 CFR Part 2.1049(h) & FCC 47 CFR Part 24.238(b) RSS-Gen Issue 5, Section 6.7	ANSI C63.26-2015 & KDB 971168 D01v03r01	PASS
Band Edge at antenna terminals	FCC 47 CFR Part 2.1051 & FCC 47 CFR Part 24.238(a) RSS-133 Issue 6, Section 6.5	ANSI C63.26-2015 & KDB 971168 D01v03r01	PASS
Spurious emissions at antenna terminals	FCC 47 CFR Part 2.1051 & FCC 47 CFR Part 24.238(a)(b) RSS-133 Issue 6, Section 6.5	ANSI C63.26-2015 & KDB 971168 D01v03r01	PASS
Field strength of spurious radiation	FCC 47 CFR Part 2.1053 & FCC 47 CFR Part 24.238(a)(b) RSS-133 Issue 6, Section 6.5	ANSI C63.26-2015 & KDB 971168 D01v03r01	PASS
Frequency stability	FCC 47 CFR Part 2.1055 & FCC 47 CFR Part 24.235 RSS-133 Issue 6, Section 6.3	ANSI C63.26-2015 & KDB 971168 D01v03r01	PASS

Shenzhen UnionTrust Quality and Technology Co., Ltd.

Address: 16/F, Block A, Building 6, Baoneng Science and Technology Park, Qingxiang Road No.1, Longhua New District, Shenzhen, China

Tel: +86-755-28230888

Fax: +86-755-28230886

E-mail: info@uttlab.com

[Http://www.uttlab.com](http://www.uttlab.com)

UTTR-RF-RSS2G-V1.0

3. EQUIPMENT LIST

Radiated Emission Test Equipment List						
Used	Equipment	Manufacturer	Model No.	Serial Number	Cal. date (mm dd, yyyy)	Cal. Due date (mm dd, yyyy)
<input checked="" type="checkbox"/>	3M Chamber & Accessory Equipment	ETS-LINDGREN	3M	N/A	Dec. 03, 2018	Dec. 03, 2021
<input checked="" type="checkbox"/>	Receiver	R&S	ESIB26	100114	Nov. 24, 2018	Nov. 24, 2019
<input checked="" type="checkbox"/>	Receiver	R&S	ESIB26	100114	Nov. 24, 2019	Nov. 23, 2020
<input type="checkbox"/>	Loop Antenna	ETS-LINDGREN	6502	00202525	Dec. 03, 2018	Dec. 03, 2019
<input checked="" type="checkbox"/>	Broadband Antenna	ETS-LINDGREN	3142E	00201566	Dec. 08, 2018	Dec. 08, 2019
<input checked="" type="checkbox"/>	6dB Attenuator	Talent	RA6A5-N-18	18103001	Dec. 08, 2018	Dec. 08, 2019
<input checked="" type="checkbox"/>	Preamplifier	HP	8447F	2805A02960	Nov. 24, 2018	Nov. 24, 2019
<input checked="" type="checkbox"/>	Preamplifier	HP	8447F	2805A02960	Nov. 24, 2019	Nov. 23, 2020
<input type="checkbox"/>	Broadband Antenna (Pre-amplifier)	ETS-LINDGREN	3142E-PA	00201891	May 18, 2019	May 18, 2020
<input type="checkbox"/>	Horn Antenna	ETS-LINDGREN	3117	00164202	Dec. 08, 2018	Dec. 08, 2019
<input checked="" type="checkbox"/>	Horn Antenna (Pre-amplifier)	ETS-LINDGREN	3117-PA	00201874	May 18, 2019	May 18, 2020
<input type="checkbox"/>	Horn Antenna	ETS-LINDGREN	3116C	00200180	Jun. 23, 2019	Jun. 23, 2020
<input checked="" type="checkbox"/>	Horn Antenna (Pre-amplifier)	ETS-LINDGREN	3116C-PA	00202652	Jan. 05, 2019	Jan. 05, 2020
<input checked="" type="checkbox"/>	Multi device Controller	ETS-LINDGREN	7006-001	00160105	N/A	N/A
<input checked="" type="checkbox"/>	Test Software	Audix	e3	Software Version: 9.160323		

RF Test Equipment List						
Used	Equipment	Manufacturer	Model No.	Serial Number	Cal. date (mm dd, yyyy)	Cal. Due date (mm dd, yyyy)
<input checked="" type="checkbox"/>	Receiver	R&S	ESR7	1316.3003K07-101181-K3	Nov. 24, 2018	Nov. 24, 2019
<input checked="" type="checkbox"/>	Receiver	R&S	ESR7	1316.3003K07-101181-K3	Nov. 24, 2019	Nov. 23, 2020
<input checked="" type="checkbox"/>	EXA Spectrum Analyzer	KEYSIGHT	N9010A	MY51440197	Nov. 24, 2018	Nov. 24, 2019
<input checked="" type="checkbox"/>	EXA Spectrum Analyzer	KEYSIGHT	N9010A	MY51440197	Nov. 24, 2019	Nov. 23, 2020
<input checked="" type="checkbox"/>	Wideband Radio Communication Tester	R&S	CMW500	120932	Jul. 19, 2019	Jul. 19, 2020
<input type="checkbox"/>	Wideband Radio Communication Tester	R&S	CMW500	119583	Jul. 31, 2019	Jul. 31, 2020
<input checked="" type="checkbox"/>	DC Source	KIKUSUI	PWR400L	LK003024	Sep. 18, 2019	Sep. 18, 2020
<input checked="" type="checkbox"/>	Temp & Humidity chamber	Votisch	VT4002	58566133290020	Jun. 05, 2018	Jun. 05, 2020

Shenzhen UnionTrust Quality and Technology Co., Ltd.

Address: 16/F, Block A, Building 6, Baoneng Science and Technology Park, Qingxiang Road No.1, Longhua New District, Shenzhen, China

Tel: +86-755-28230888

Fax: +86-755-28230886

E-mail: info@uttlab.com

[Http://www.uttlab.com](http://www.uttlab.com)

UTTR-RF-RSS2G-V1.0

4. TEST CONFIGURATION

4.1 ENVIRONMENTAL CONDITIONS FOR TESTING

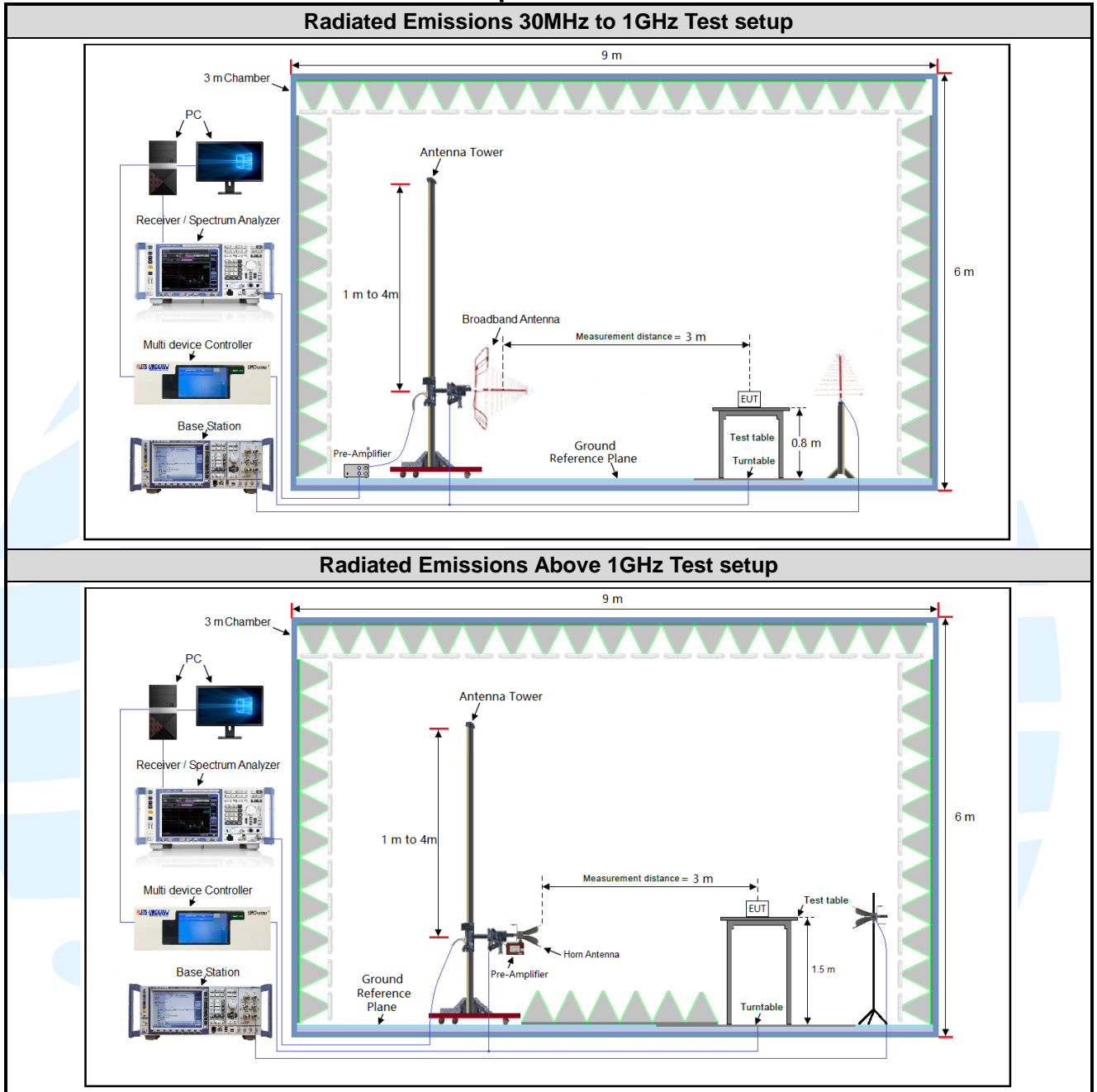
Test Environment	Selected Values During Tests		
Test Condition	Ambient		
	Temperature (°C)	Voltage (V)	Relative Humidity (%)
TN/VN	+15 to +35	3.8	20 to 75
TL/VL	-40	3.3	20 to 75
TH/VL	+60	3.3	20 to 75
TL/VH	-40	4.6	20 to 75
TH/VH	+60	4.6	20 to 75

Remark:

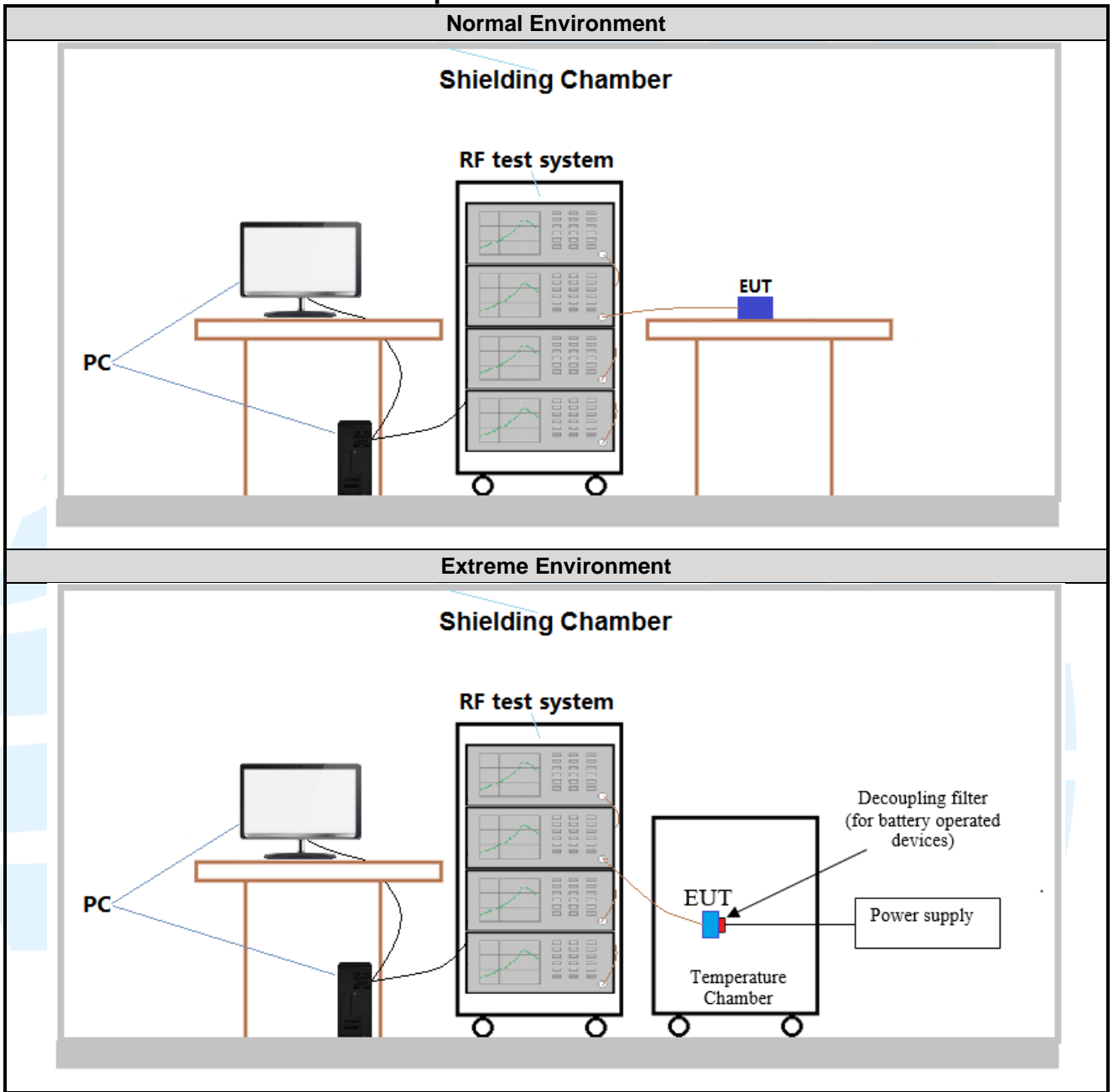
- 1) The EUT just work in such extreme temperature of -40 °C to +60 °C and the extreme voltage of 3.3 V to 4.6 V, so here the EUT is tested in the temperature of -40 °C to +60 °C and the voltage of 3.3 V to 4.6 V.
- 2) VN: Normal Voltage; TN: Normal Temperature;
 TL: Low Extreme Test Temperature; TH: High Extreme Test Temperature;
 VL: Low Extreme Test Voltage; VH: High Extreme Test Voltage.

4.2 TEST SETUP

4.2.1 For Radiated Emissions test setup



4.2.2 For Conducted RF test setup



4.3 TEST CHANNELS

Bands	Tx/Rx Frequency	RF Channel		
		Low(L)	Middle(M)	High(H)
GPRS/ 850	Tx (824 MHz ~ 849 MHz)	Channel 128	Channel 190	Channel 251
		824.2 MHz	836.6 MHz	848.8 MHz

Bands	Tx/Rx Frequency	RF Channel		
		Low(L)	Middle(M)	High(H)
GPRS/ 1900	Tx (1850 MHz-1910 MHz)	Channel 512	Channel 661	Channel 810
		1850.2 MHz	1880.0 MHz	1909.8 MHz

4.4 SYSTEM TEST CONFIGURATION

For emissions testing, the equipment under test (EUT) setup to transmit continuously to simplify the measurement methodology. Care was taken to ensure proper power supply voltages during testing. During testing, radiated emission were performed with the EUT set to transmit at the channel with highest output power as worst-case scenario. Only the worst case data were recorded in this test report.

Pre-Scan has been conducted to determine the worst-case mode from all possible combinations between available modulations, data rates, X/Y/Z axis, and antenna ports.

The worst case was found when positioned as the table below.

Bands	Mode	Antenna Port	Worst-case axis positioning
GSM 850	1TX	Chain 0	Y axis
PCS 1900	1TX	Chain 0	Y axis

All readings are extrapolated back to the equivalent three meter reading using inverse scaling with distance. Analyzer resolution is 100 kHz or greater for frequencies below 1000MHz. The resolution is 1 MHz or greater for frequencies above 1000MHz. The spurious emissions more than 20 dB below the permissible value are not reported.

Radiated emission measurement were performed from the lowest radio frequency signal generated in the device which is greater than 9 kHz to the tenth harmonic of the highest fundamental frequency or to 40 GHz, whichever is lower.

4.5 PRE-SCAN

Pre-scan under all rate at lowest middle and highest channel, find the transmitter power as below:

SIM 1 Card Conducted transmitter power measurement result.

GSM 850 Maximum Average Power (dBm)			
Channel	128	189	251
Frequency(MHz)	824.2 MHz	836.4 MHz	848.8 MHz
GPRS (GMSK, 1Tx-slot)	32.38	32.82	32.37

PCS 1900 Maximum Average Power (dBm)			
Channel	512	661	810
Frequency(MHz)	1850.2 MHz	1880.0 MHz	1909.8 MHz
GPRS (GMSK, 1Tx-slot)	28.46	28.26	28.49

Pre-scan all bandwidth and RB, find worse case mode are chosen to the report, the worse mode applicability and tested channel detail as below:

Band	Radiated	Conducted
GPRS/ 850/1900	GPRS (GMSK, 1Tx-slot) Link	GPRS (GMSK, 1Tx-slot) Link

5. RADIO TECHNICAL REQUIREMENTS SPECIFICATION

5.1 REFERENCE DOCUMENTS FOR TESTING

No.	Identity	Document Title
1	FCC 47 CFR Part 2	Frequency allocations and radio treaty matters; general rules and regulations
2	FCC 47 CFR Part 22	Public Mobile Services
3	FCC 47 CFR Part 24	Personal Communications Services
4	RSS-Gen Issue 5	General Requirements for Compliance of Radio Apparatus
5	RSS-132 Issue 3	Cellular Telephone Systems Operating in the Bands 824-849 MHz and 869-894 MHz
6	RSS-133 Issue 6	2 GHz Personal Communications Services Aussi disponible
7	ANSI C63.26-2015	American National Standard for Compliance Testing of Transmitters Used in Licensed Radio Services
8	KDB 971168 D01	KDB 971168 D01 Power Meas License Digital Systems v03r01

5.2 MAXIMUM ERP/EIRP

Test Requirement: FCC 47 CFR Part 2.1046(a),
 FCC 47 CFR Part 22.913(a),
 FCC 47 CFR Part 24.232(c),
 RSS-132 Issue 3, Section 5.4,
 RSS-133 Issue 6, Section 6.4,

Test Method: KDB 971168 D01v03r01 Section 5.6 & ANSI C63.26-2015

Limit:

FCC 47 CFR Part 22.913(a)

The ERP of mobile transmitters and auxiliary test transmitters must not exceed 7 Watts.

FCC 47 CFR Part 24.232(c)

Mobile and portable stations are limited to 2 watts EIRP.

RSS-132 Issue 3, Section 5.4,

The transmitter output power shall be measured in terms of average power. The equivalent isotropically radiated power (e.i.r.p.) for mobile equipment shall not exceed 11.5 watts.

RSS-133 Issue 6, Section 6.4

The equivalent isotropically radiated power (e.i.r.p.) for transmitters shall not exceed the limits given in SRSP-510. Moreover, base station transmitters operating in the band 1930-1995 MHz shall not have output power exceeding 100 watts.

Test Procedure:

1. EUT was placed on a 1.5 meter high non-conductive stand at a 3 meter test distance from the receive antenna. A receiving antenna was placed on the antenna mast 3 meters from the EUT for emission measurements. The height of receiving antenna is 1.5m. The test setup refers to figure below. Detected emissions were maximized at each frequency by rotating the EUT through 360° and adjusting the receiving antenna polarization. The radiated emission measurements of all transmit frequencies in three channels (High, Middle, Low) were measured with peak detector.
2. The EUT is then put into continuously transmitting mode at its maximum power level during the test. And the maximum value of the receiver should be recorded as (Pr).
3. The EUT shall be replaced by a substitution antenna. The test setup refers to figure below. In the chamber, an substitution antenna for the frequency band of interest is placed at the reference point of the chamber. An RF Signal source for the frequency band of interest is connected to the substitution antenna with a cable that has been constructed to not interfere with the radiation pattern of the antenna. A power (P_{Mea}) is applied to the input of the substitution antenna, and adjust the level of the signal generator output until the value of the receiver reach the previously recorded (Pr). The power of signal source (P_{Mea}) is recorded. The test should be performed by rotating the test item and adjusting the receiving antenna polarization.

Shenzhen UnionTrust Quality and Technology Co., Ltd.

Address: 16/F, Block A, Building 6, Baoneng Science and Technology Park, Qingxiang Road No.1, Longhua New District, Shenzhen, China

Tel: +86-755-28230888

Fax: +86-755-28230886

E-mail: info@uttlab.com

[Http://www.uttlab.com](http://www.uttlab.com)

UTTR-RF-RSS2G-V1.0

4. A amplifier should be connected to the Signal Source output port. And the cable should be connected between the Amplifier and the Substitution Antenna. The cable loss (P_{cl}), the Substitution Antenna Gain (G_a) and the Amplifier Gain (P_{Ag}) should be recorded after test.

The measurement results are obtained as described below:

$$\text{Power(EIRP)} = P_{Mea} + P_{Ag} - P_{cl} + G_a$$

5. This value is EIRP since the measurement is calibrated using an antenna of known gain (0dBi) and known input power.

6. ERP can be calculated from EIRP by subtracting the gain of the dipole, $ERP = EIRP - 2.15\text{dBi}$.

Test Setup: Refer to section 4.2.1 for details.

Instruments Used: Refer to section 3 for details

Test Mode: Link mode

Test Results: Pass

Test Data: See table below

Bands	Modulation	Channel	FCC Limit	RSS Limit	ERP		Result
			(W)	(W)	(dBm)	(W)	
GPRS 850 (824-849 MHz)	GPRS	Low	7.0	11.5	35.84	3.837072	Pass
		Mid			35.40	3.467369	Pass
		High			35.39	3.459394	Pass

Bands	Modulation	Channel	FCC Limit	RSS Limit	EIRP		Result
			(W)	(W)	(dBm)	(W)	
PCS 1900 (1850-1910 MHz)	GPRS	Low	2.0	2.0	28.28	0.672977	Pass
		Mid			28.48	0.704693	Pass
		High			28.51	0.709578	Pass

5.3 CONDUCTED OUTPUT POWER

Test Requirement: FCC 47 CFR Part 2.1046(a),
 FCC 47 CFR Part 22.913(a),
 FCC 47 CFR Part 24.232(c),,
 RSS-132 Issue 3, Section 5.4,
 RSS-133 Issue 6, Section 6.4,

Test Method: KDB 971168 D01v03r01 & ANSI C63.26-2015

Limit:

FCC 47 CFR Part 22.913(a)

The ERP of mobile transmitters and auxiliary test transmitters must not exceed 7 Watts.

FCC 47 CFR Part 24.232(c)

Mobile and portable stations are limited to 2 watts EIRP.

RSS-132 Issue 3, Section 5.4,

The transmitter output power shall be measured in terms of average power. The equivalent isotropically radiated power (e.i.r.p.) for mobile equipment shall not exceed 11.5 watts.

RSS-133 Issue 6, Section 6.4

The equivalent isotropically radiated power (e.i.r.p.) for transmitters shall not exceed the limits given in SRSP-510. Moreover, base station transmitters operating in the band 1930-1995 MHz shall not have output power exceeding 100 watts.

Test Procedure:

The EUT was set up for the maximum power with GPRS and LTE link data modulation and link up with simulator. Set the EUT to transmit under low, middle and high channel and record the power level shown on simulator.

Note: The cable loss and attenuator loss were offset into measure device as an amplitude offset.

Test Setup: Refer to section 4.2.2 for details.

Instruments Used: Refer to section 3 for details

Test Mode: Link mode

Test Results: Pass

Test Data: The full result refer to section 4.5 for details.

5.4 PEAK-TO-AVERAGE RATIO

Test Requirement: FCC 47 CFR Part 22.913(a),
 FCC 47 CFR Part 24.232(c),
 RSS-132 Issue 3, Section 5.4,
 RSS-133 Issue 6, Section 6.4,

Test Method: KDB 971168 D01v03r01 Section 5.7

Limit: In measuring transmissions in this band using an average power technique, the peak-to-average ratio (PAR) of the transmission may not exceed 13 dB

Test Procedure:
 The transmitter output was connected to a calibrated coaxial cable and coupler, the other end of which was connected to a spectrum analyzer.

- a) Set resolution/measurement bandwidth \geq signal's occupied bandwidth
- b) Set the number of counts to a value that stabilizes the measured CCDF curve
- c) Record the maximum PAPR level associated with a probability of 0.1 %

Note: The cable loss and attenuator loss were offset into measure device as an amplitude offset.

Test Setup: Refer to section 4.2.2 for details.

Instruments Used: Refer to section 3 for details

Test Mode: Link mode

Test Results: Pass

Test Data: See table below

Bands	Modulation	Peak-to-average ratio (dB)			Limit (dBm)	Result
		Lowest	Middle	Highest		
GSM 850	GPRS	8.37	8.40	8.43	13	Pass
PCS 1900	GPRS	8.43	8.40	8.43	13	Pass

5.5 99%&26DB BANDWIDTH

Test Requirement: FCC 47 CFR Part 2.1049(h),
 FCC 47 CFR Part 22.917(b),
 FCC 47 CFR Part 24.238(b),
 RSS-Gen Issue 5, Section 6.7

Test Method: ANSI C63.26-2015 & KDB 971168 D01v03r01 Section 4

Limit: No Limit, for reporting purposes only.

Test Procedure:
 The transmitter output was connected to a calibrated coaxial cable and coupler, the other end of which was connected to a spectrum analyzer. The occupied bandwidth was measured with the spectrum analyzer at the low, middle and high channel in each band. The 99% and -26dB bandwidths was also measured and recorded.

Note: The cable loss and attenuator loss were offset into measure device as an amplitude offset.

Test Setup: Refer to section 4.2.2 for details.

Instruments Used: Refer to section 3 for details

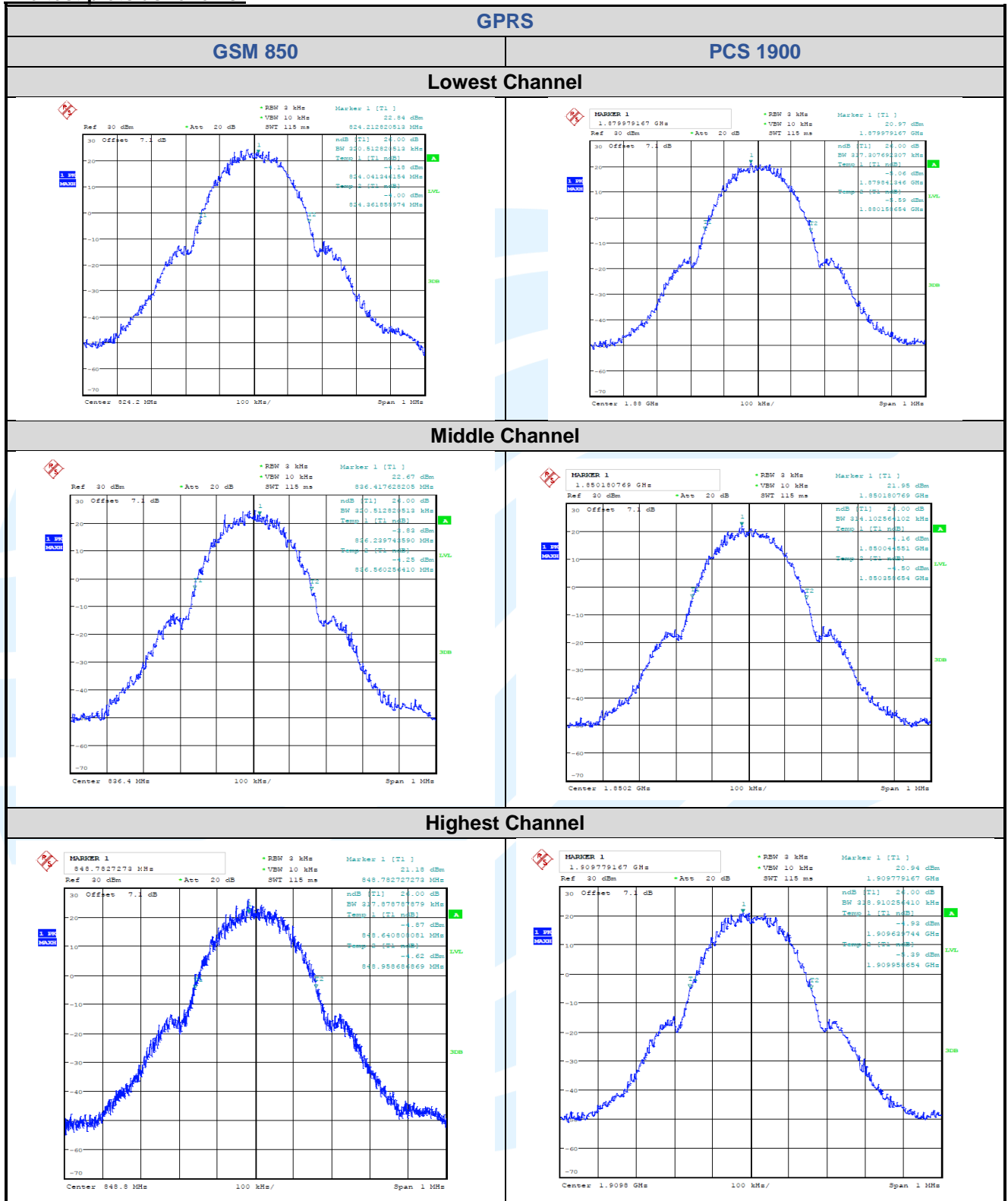
Test Mode: Link mode

Test Results: Pass

Test Data: See table below

Bands	Modulation	Channel	Frequency (MHz)	26 dB BW (kHz)	99% BW (kHz)
GSM 850	GPRS	128	824.2	321	246.8
		189	836.4	320	245.2
		251	848.8	318	243.7
PCS 1900	GPRS	512	1850.2	314	245.2
		661	1880.0	317	245.2
		810	1909.8	319	243.6

The test plots as follows:



5.6 BAND EDGE AT ANTENNA TERMINALS

Test Requirement: FCC 47 CFR Part 2.1051,
 FCC 47 CFR Part 22.917(a),
 FCC 47 CFR Part 24.238(a),
 RSS-132 Issue 3, Section 5.5,
 RSS-133 Issue 6, Section 6.5,
Test Method: ANSI C63.26-2015 & KDB 971168 D01v03r01

Limit:

FCC 47 CFR Part 22.917(a), FCC 47 CFR Part 24.238(a), FCC 47 CFR Part 27.53(h)(1),

The power of any emission outside of the authorized operating frequency ranges must be attenuated below the transmitting power (P) by a factor of at least $43 + 10 \log(P)$ dB. The emission limit equal to -13 dBm.

RSS-132 Issue 3, Section 5.5,

In the first 1.0 MHz band immediately outside and adjacent to each of the sub-bands specified in Section 5.1, the power of emissions per any 1% of the occupied bandwidth shall be attenuated (in dB) below the transmitter output power P (dBW) by at least $43 + 10 \log_{10} p$ (watts).

After the first 1.0 MHz immediately outside and adjacent to each of the sub-bands, the power of emissions in any 100 kHz bandwidth shall be attenuated (in dB) below the transmitter output power P (dBW) by at least $43 + 10 \log_{10} p$ (watts). If the measurement is performed using 1% of the occupied bandwidth, power integration over 100 kHz is required.

RSS-133 Issue 6, Section 6.5,

In the 1.0 MHz bands immediately outside and adjacent to the equipment's operating frequency block, the emission power per any 1% of the emission bandwidth shall be attenuated (in dB) below the transmitter output power P (dBW) by at least $43 + 10 \log_{10} p$ (watts).

After the first 1.0 MHz, the emission power in any 1 MHz bandwidth shall be attenuated (in dB) below the transmitter output power P (dBW) by at least $43 + 10 \log_{10} p$ (watts). If the measurement is performed using 1% of the emission bandwidth, power integration over 1.0 MHz is required.

错误!未找到引用源。 , Section 6.6,

In the first 1.0 MHz bands immediately outside and adjacent to the equipment's smallest operating frequency block, which can contain the equipment's occupied bandwidth, the emission power per any 1% of the emission bandwidth shall be attenuated below the transmitter output power P (in dBW) by at least $43 + 10 \log_{10} p$ (watts) dB.

After the first 1.0 MHz outside the equipment's smallest operating frequency block, which can contain the equipment's occupied bandwidth, the emission power in any 1 MHz bandwidth shall be attenuated below the transmitter output power P (in dBW) by at least $43 + 10 \log_{10} p$ (watts) dB.

Test Procedure:

The transmitter output was connected to a calibrated coaxial cable and coupler, the other end of which was connected to a spectrum analyzer.

For each band edge measurement:

- 1) Set the spectrum analyzer span to include the block edge frequency.
- 2) Set a marker to point the corresponding band edge frequency in each test case.
- 3) Set display line at -13 dBm
- 4) Set resolution bandwidth to at least 1% of emission bandwidth.
- 5) Set spectrum analyzer with RMS detector.
- 6) Record the max trace plot into the test report

Note: The cable loss and attenuator loss were offset into measure device as an amplitude offset.

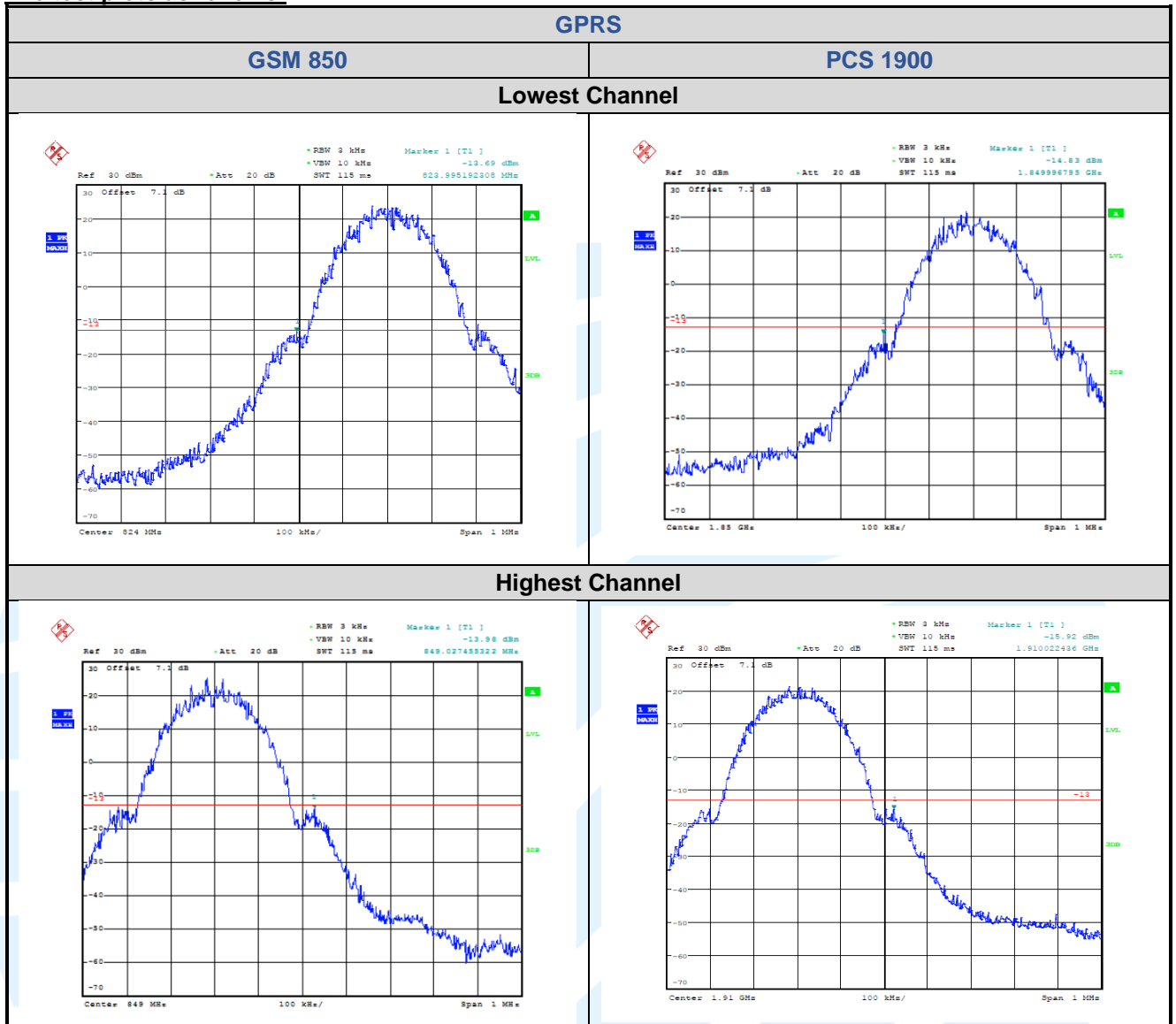
Test Setup: Refer to section 4.2.2 for details.

Instruments Used: Refer to section 3 for details

Test Mode: Link mode

Test Results: Pass

The test plots as follows:



5.7 SPURIOUS EMISSIONS AT ANTENNA TERMINALS

Test Requirement: FCC 47 CFR Part 2.1051,
 FCC 47 CFR Part 22.917(a)(b),
 FCC 47 CFR Part 24.238(a)(b),
 RSS-132 Issue 3, Section 5.5,
 RSS-133 Issue 6, Section 6.5,

Test Method: ANSI C63.26-2015 & KDB 971168 D01v03r01

Limit:
FCC 47 CFR Part 22.917(a), FCC 47 CFR Part 24.238(a),
 The power of any emission outside of the authorized operating frequency ranges must be attenuated below the transmitting power (P) by a factor of at least $43 + 10 \log(P)$ dB. The emission limit equal to -13 dBm.

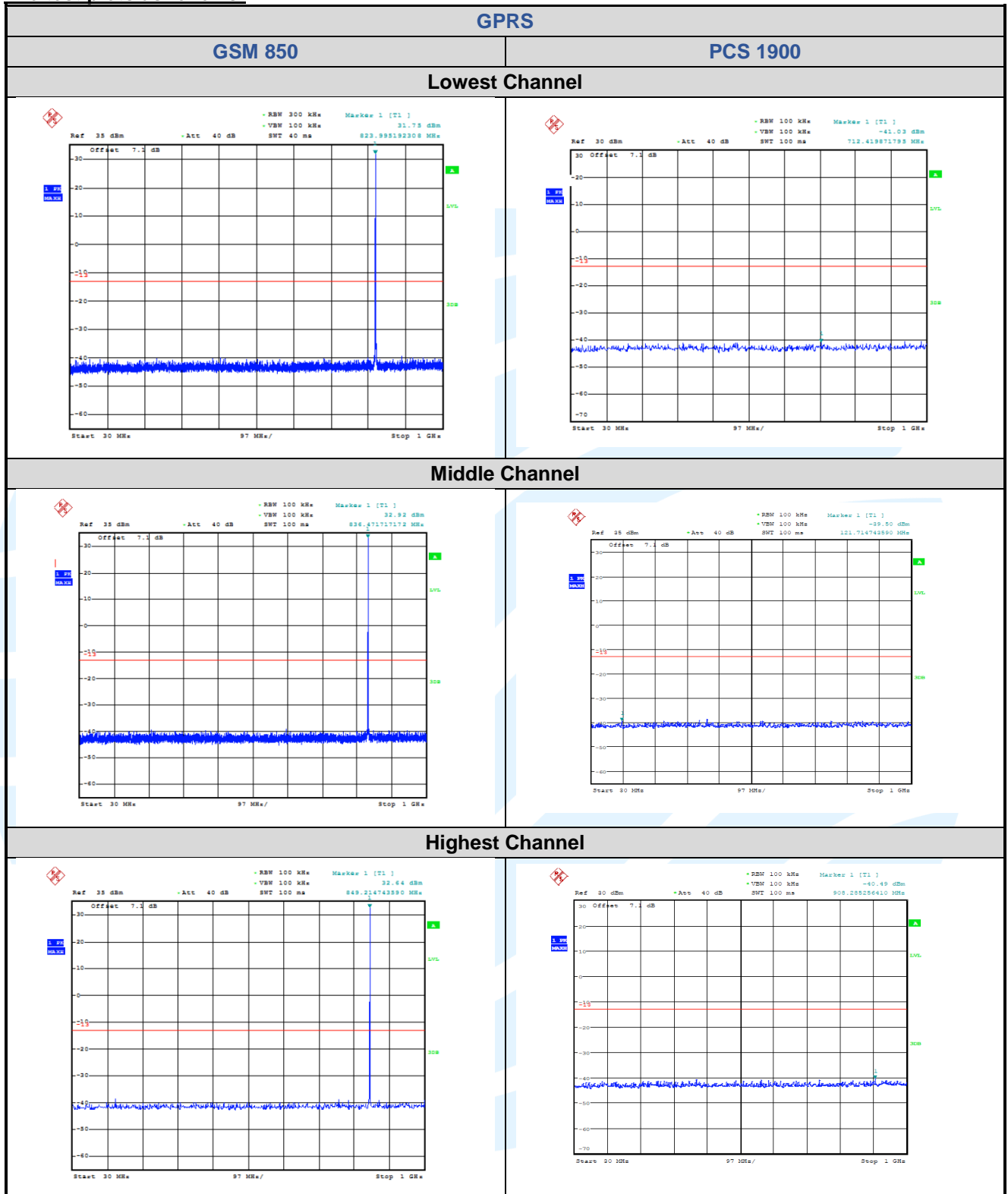
RSS-132 Issue 3, Section 5.5, RSS-133 Issue 6, Section 6.6,
 The power of any emission outside of the authorized operating frequency ranges must be attenuated below the transmitting power (P) by a factor of at least $43 + 10 \log(P)$ dB. The emission limit equal to -13 dBm.

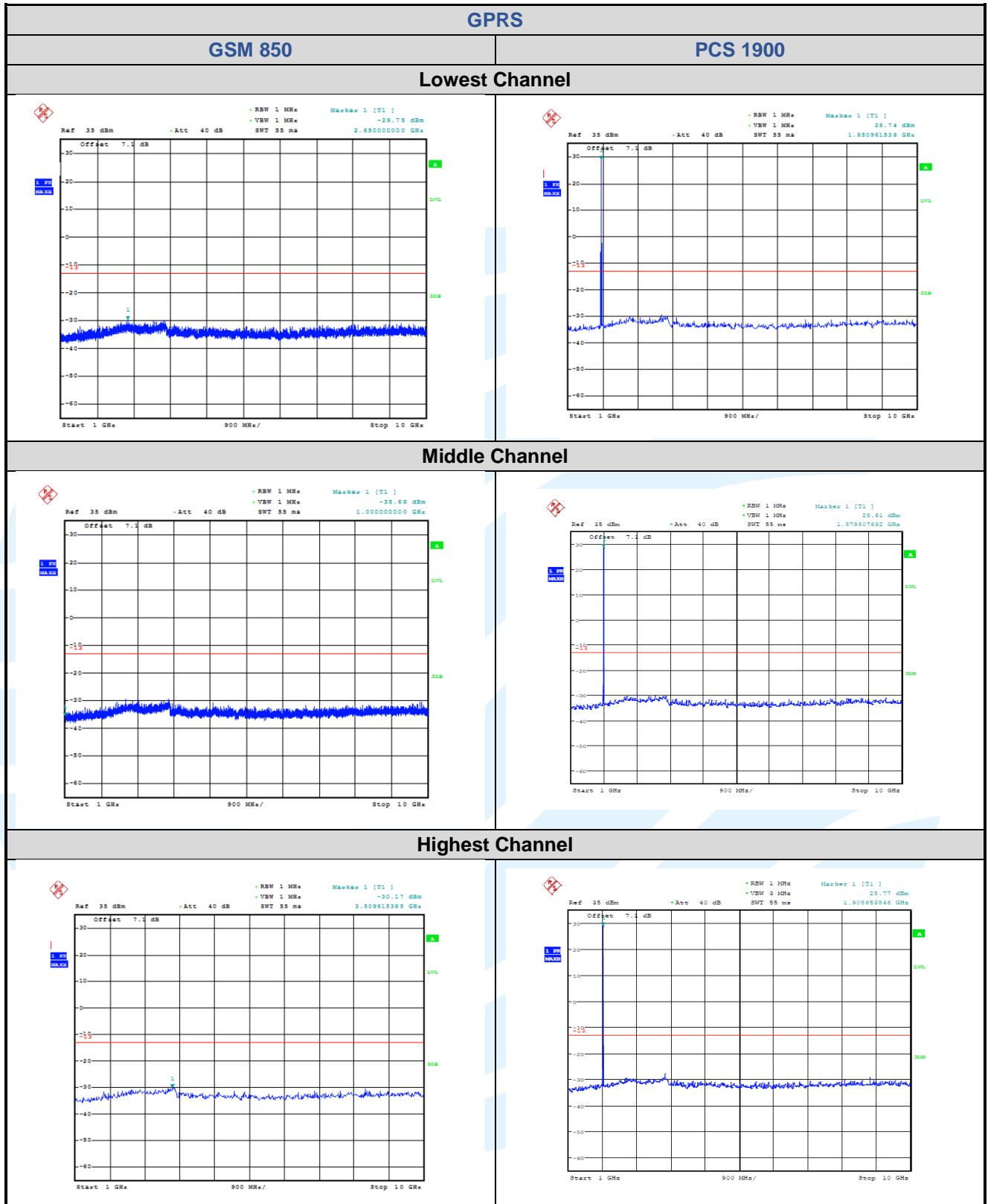
Test Procedure:
 The EUT makes a phone call to the communication simulator. All measurements were done at low, middle and high operational frequency range. b. Measuring frequency range is from 30 MHz to the tenth harmonic of the highest fundamental frequency or to 40 GHz, whichever is lower. Set RBW & VBW to 100 kHz for the measurement below 1 GHz, and 1 MHz for the measurement above 1 GHz.

Note: The cable loss and attenuator loss were offset into measure device as an amplitude offset.

Test Setup: Refer to section 4.2.2 for details.
Instruments Used: Refer to section 3 for details
Test Mode: Link mode
Test Results: Pass

The test plots as follows:





Remark:

The disturbance above 10GHz was very low, and the above harmonics were the highest point could be found when testing, so only the above harmonics had been displayed. The amplitude of spurious emissions from the radiator which are attenuated more than 20dB below the limit need not be reported.

5.8 FIELD STRENGTH OF SPURIOUS RADIATION

Test Requirement: FCC 47 CFR Part 2.1053,
 FCC 47 CFR Part 22.917(a)(b),
 FCC 47 CFR Part 24.238(a)(b),
 RSS-132 Issue 3, Section 5.5,
 RSS-133 Issue 6, Section 6.5,

Test Method: ANSI C63.26-2015 & KDB 971168 D01v03r01 Section 7

Limits:

FCC 47 CFR Part 22.917(a), FCC 47 CFR Part 24.238(a),

The power of any emission outside of the authorized operating frequency ranges must be attenuated below the transmitting power (P) by a factor of at least 43 + 10 log(P) dB. The emission limit equal to -13 dBm.

RSS-132 Issue 3, Section 5.5, RSS-133 Issue 6, Section 6.6,

The power of any emission outside of the authorized operating frequency ranges must be attenuated below the transmitting power (P) by a factor of at least 43 + 10 log(P) dB. The emission limit equal to -13 dBm.

Test Setup: Refer to section 4.2.1 for details.

Test Procedures: KDB 971168 D01v03r01 Section 7

Equipment Used: Refer to section 3 for details.

Test Result: Pass

The measurement data as follows:

Frequency	Channel	Frequency Range	Result
GSM850	Low	30MHz~10GHz	PASS
	Middle	30MHz~10GHz	PASS
	High	30MHz~10GHz	PASS
GSM1900	Low	30MHz~20GHz	PASS
	Middle	30MHz~20GHz	PASS
	High	30MHz~20GHz	PASS

GPRS Mode Channel 128

Frequency (MHz)	PMea (dBm)	Pcl (dBm)	Ga (dBi)	Peak EIRP (dBm)	Limit (dBm)	Polarization
1482.5	-37.09	4.1	3.4	-37.79	-13	V
2475.0	-37.66	5.3	3.7	-39.26	-13	V
3566.5	-45.86	6.4	4.7	-47.56	-13	V
4165.4	-50.95	7.0	7.7	-50.25	-13	V
4950.0	-52.75	7.7	9.0	-51.45	-13	V
5776.2	-50.43	8.4	10.5	-48.33	-13	V

GPRS Mode Channel 189

Frequency (MHz)	PMea (dBm)	Pcl (dBm)	Ga (dBi)	Peak EIRP (dBm)	Limit (dBm)	Polarization
1713.2	-43.15	4.4	2.9	-44.65	-13	V
2537.1	-36.76	5.4	3.7	-38.46	-13	V
3407.3	-49.29	6.3	4.7	-50.89	-13	V
4246.2	-50.74	7.1	7.7	-50.14	-13	V
5161.2	-50.81	7.9	8.7	-50.01	-13	H
5986.2	-48.5	8.6	10.4	-46.70	-13	V

GPRS Mode Channel 251

Frequency (MHz)	PMea (dBm)	Pcl (dBm)	Ga (dBi)	Peak EIRP (dBm)	Limit (dBm)	Polarization
1699.3	-43.97	4.4	2.9	-45.47	-13	V
2545.7	-35.56	5.4	3.7	-37.26	-13	H
3342.7	-48.92	6.2	4.7	-50.42	-13	V
4243.8	-40.73	7.1	7.7	-40.13	-13	H
5031.9	-51.87	7.8	9.0	-50.67	-13	H
6403.1	-47.95	8.9	11.5	-45.35	-13	V

GPRS Mode Channel 512

Frequency (MHz)	PMea (dBm)	Pcl (dBm)	Ga (dBi)	Peak EIRP (dBm)	Limit (dBm)	Polarization
3760.8	-53.87	6.6	7.7	-52.77	-13	H
5550.0	-47.97	8.2	9.5	-46.67	-13	V
7477.2	-53.71	9.7	14.6	-48.81	-13	H
9348.0	-54.77	10.7	18.5	-46.97	-13	V
11286.0	-48.81	12.1	18.5	-42.41	-13	V
12955.2	-46.88	13.2	20.2	-39.88	-13	V

GPRS Mode Channel 661

Frequency (MHz)	PMea (dBm)	Pcl (dBm)	Ga (dBi)	Peak EIRP (dBm)	Limit (dBm)	Polarization
4099.8	-52.81	7.0	7.7	-52.11	-13	V
5277.6	-52.31	8.0	8.7	-51.61	-13	V
6946.8	-52.84	9.3	12.9	-49.24	-13	H
9216.0	-54.3	10.5	18.5	-46.30	-13	H
11910.0	-46.06	12.5	17.1	-41.46	-13	H
14302.8	-47.58	13.6	23.5	-37.68	-13	V

GPRS Mode Channel 810

Frequency (MHz)	PMea (dBm)	Pcl (dBm)	Ga (dBi)	Peak EIRP (dBm)	Limit (dBm)	Polarization
3811.8	-53.58	6.7	7.7	-52.58	-13	V
5751.6	-54.06	8.5	10.5	-52.06	-13	V
7611.6	-54.2	9.7	14.6	-49.30	-13	H
9525.6	-54.79	10.7	18.6	-46.89	-13	V
11470.8	-49.66	12.3	18.1	-43.86	-13	V
13329.6	-47.35	13.6	21.8	-39.15	-13	H

Note:the EUT was displayed in several different direction, the worst cases were shown.

5.9 FREQUENCY STABILITY

Test Requirement: FCC 47 CFR Part 2.1055 &
 FCC 47 CFR Part 22.355 &
 FCC 47 CFR Part 24.235 &
 RSS-132 Issue 3, Section 5.3,
 RSS-133 Issue 6, Section 6.3,
Test Method: ANSI C63.26-2015 & KDB 971168 D01v03r01

Limits:

FCC 47 CFR Part 22.355,

The carrier frequency shall not depart from the reference frequency in excess of ± 2.5 ppm for mobile stations.

FCC 47 CFR Part 24.235,

The frequency stability shall be sufficient to ensure that the fundamental emission stays within the authorized frequency block.

RSS-132 Issue 3, Section 5.3,

The carrier frequency shall not depart from the reference frequency in excess of ± 2.5 ppm for mobile stations and ± 1.5 ppm for base stations

RSS-133 Issue 6, Section 6.3,

The carrier frequency shall not depart from the reference frequency, in excess of ± 2.5 ppm for mobile stations and ± 1.0 ppm for base stations.

Test Setup: Refer to section 4.2.2 for details.

Test Procedures:

- 1) Use CMW 500 with Frequency Error measurement capability.
 - a) Temp. = -30° to $+50^{\circ}\text{C}$
 - b) Voltage = low voltage, 3.3 Vdc, Normal, 3.8 Vdc and High voltage, 4.6 Vdc.

2) Frequency Stability vs Temperature:

The EUT is placed inside a temperature chamber. The temperature is set to 20°C and allowed to stabilize. After sufficient soak time, the transmitting frequency error is measured. The temperature is increased by 10 degrees, allowed to stabilize and soak, and then the measurement is repeated. This is repeated until $+50^{\circ}\text{C}$ is reached.

3) Frequency Stability vs Voltage:

The peak frequency error is recorded (worst-case).

Equipment Used: Refer to section 3 for details.

Test Result: Pass

Modulation	Channel/ Frequency (MHz)	Voltage	Temperature	Deviation	Deviation	Limit	Result
		(Vdc)	(°C)	(Hz)	(ppm)	(ppm)	
GSM 850							
GPRS	189 / 836.4	VL	TN	5.62	0.0067	± 2.5	Pass
		VN		9.94	0.0119	± 2.5	Pass
		VH		4.49	0.0054	± 2.5	Pass
		VN	50	6.97	0.0083	± 2.5	Pass
			40	5.13	0.0061	± 2.5	Pass
			30	6.49	0.0078	± 2.5	Pass
			20	7.23	0.0086	± 2.5	Pass
			10	9.27	0.0111	± 2.5	Pass
			0	9.78	0.0117	± 2.5	Pass
			-10	12.62	0.0151	± 2.5	Pass
			-20	12.30	0.0147	± 2.5	Pass
			-30	7.65	0.0091	± 2.5	Pass

Modulation	Channel/ Frequency (MHz)	Voltage	Temperature	Deviation	Deviation	Limit	Result
		(Vdc)	(°C)	(Hz)	(ppm)	(ppm)	
PCS 1900							
GPRS	661 / 1880.0	VL	TN	11.11	0.0059	N/A	Pass
		VN		9.30	0.0049		Pass
		VH		10.62	0.0056		Pass
		VN	50	8.52	0.0045		Pass
			40	5.04	0.0027		Pass
			30	10.88	0.0058		Pass
			20	7.65	0.0041		Pass
			10	11.04	0.0059		Pass
			0	10.69	0.0057		Pass
			-10	8.68	0.0046		Pass
			-20	9.81	0.0052		Pass
			-30	9.75	0.0052		Pass

APPENDIX 1 PHOTOS OF TEST SETUP

See test photos attached in Appendix 1 for the actual connections between Product and support equipment.

APPENDIX 2 PHOTOS OF EUT CONSTRUCTIONAL DETAILS

Refer to Appendix 2 for EUT external and internal photos.

*** End of Report ***

The test report is effective only with both signature and specialized stamp. The result(s) shown in this report refer only to the sample(s) tested. Without written approval of UnionTrust, this report can't be reproduced except in full.
