

# Annex 2: EUT photographs to TEST REPORT No.: 18-1-0039301T04







According to:  
**FCC Regulations**  
Part 27

for

Gemalto M2M GmbH

LTE Module Rel.13 CAT-M1 EMS31-V

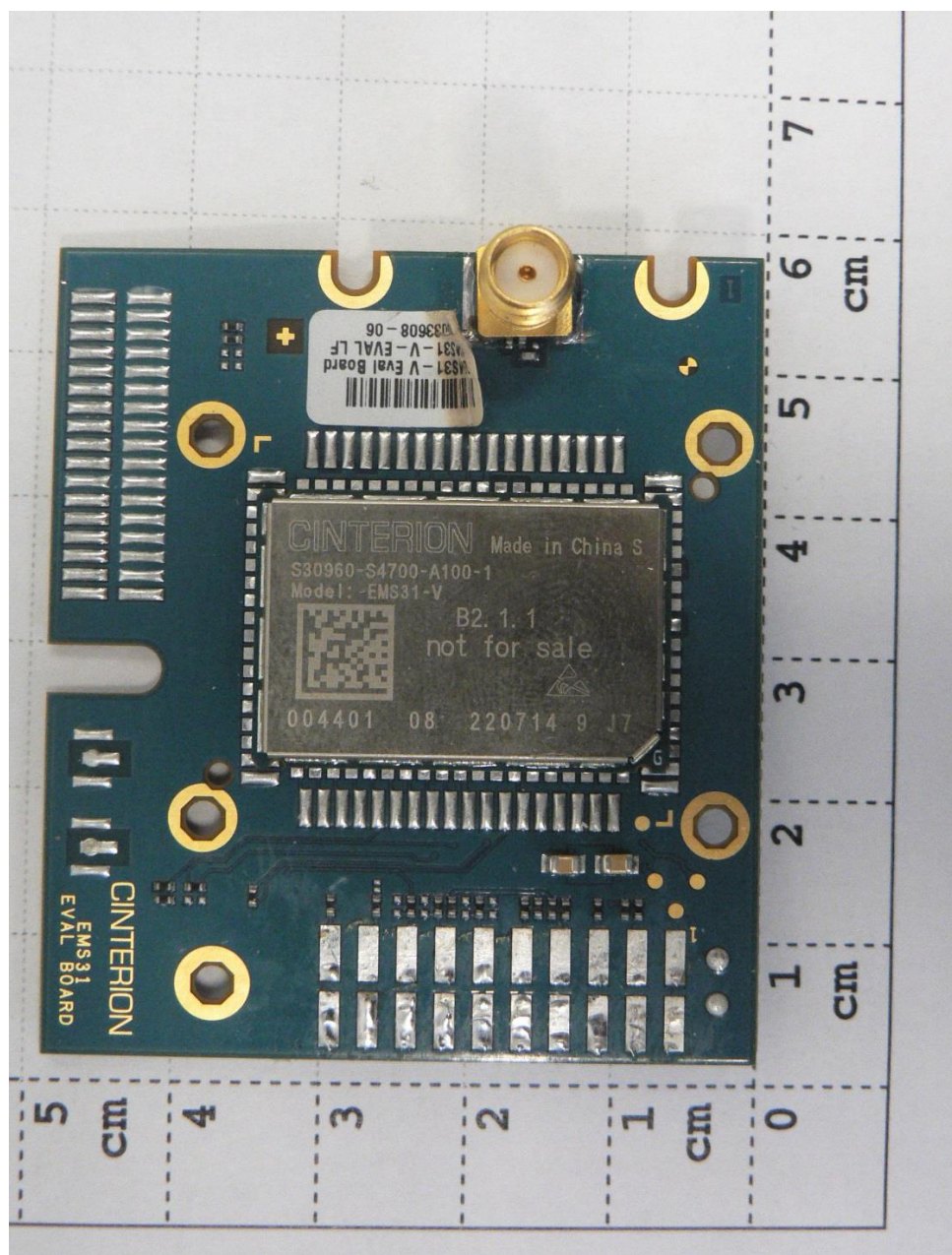
FCC-ID: QIPEMS31-V

Laboratory Accreditation and Listings		
 Deutsche Akkreditierungsstelle D-PL-12047-01-01  Accredited EMC-Test Laboratory	 Industry Canada Reg. No.: 3462D-1 Reg. No.: 3462D-2 Reg. No.: 3462D-3	 Voluntary Controls for Electromagnetic Emissions  Reg. No.: R-20013, C-20009, T-20006, G-20013
 AUTHORIZED RF LABORATORY	 Authorized Test Lab Lab Code: 20011130-00	 MRA US-EU 0003
accredited according to DIN EN ISO/IEC 17025		
<b>CETECOM GmbH</b> Laboratory Radio Communications & Electromagnetic Compatibility Im Teelbruch 116 • 45219 Essen • Germany Registered in Essen, Germany, Reg. No.: HRB Essen 8984 Tel.: + 49 (0) 20 54 / 95 19-954 • Fax: + 49 (0) 20 54 / 95 19-964 E-mail: info@cetecom.com • Internet: www.cetecom.com		
Laboratory Accreditation and Listings		

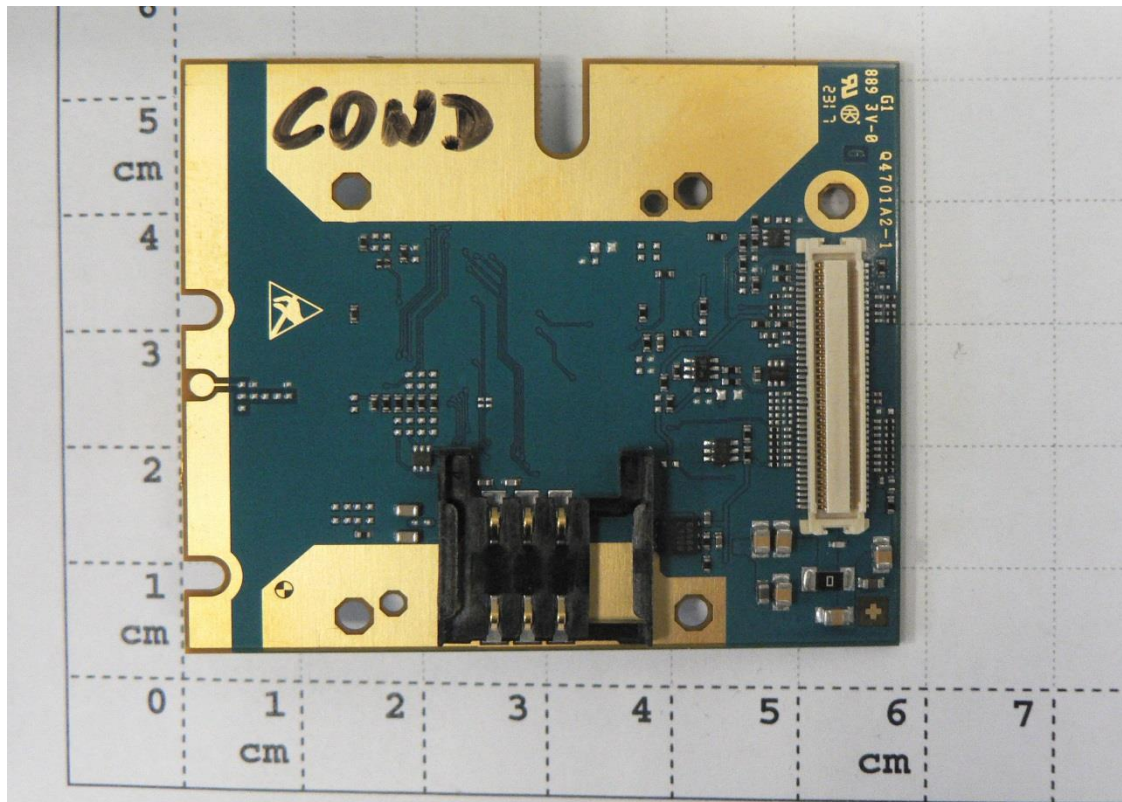
<b>1. EXTERNAL PHOTOGRAPHS.....</b>	<b>2</b>
1.1. Main device under test (EUT/DUT) .....	2

## 1. External photographs

### 1.1. Main device under test (EUT/DUT)



Photograph 1: EUT A - Front side view



**Photograph 2: EUT A - rear side view**