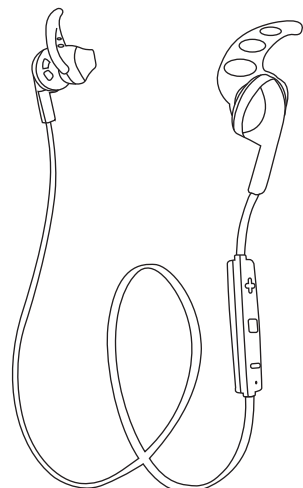


FCC ID: QIFE07



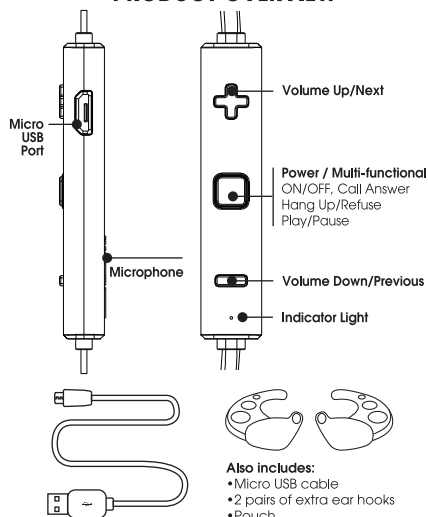
ProBuds SportSeries Wireless Stereo EarBuds



HD
HD Voice Ready
Built-in Microphone

User Guide

PRODUCT OVERVIEW



Also includes:
• Micro USB cable
• 2 pairs of extra ear hooks
• Pouch

CHARGING THE EARBUDS

These earbuds have an internal rechargeable battery. The battery must be fully charged prior to use. Charging time is approximately 1.5 hrs. Your earbuds cannot be used while charging.

1

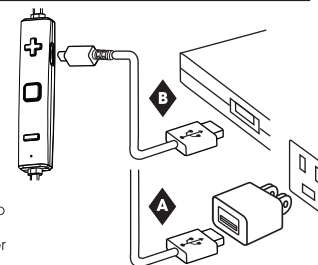
Red light ON – Charging Blue light ON – Fully charged

A Via AC Adapter Wall Charger

Using the provided Micro USB cable, connect the Earbuds (Micro USB port) to the AC Adapter (USB port).

B Via Computer

Using the provided Micro USB cable, connect the Earbuds to the computer or laptop (USB port).



PAIRING THE EARBUDS TO BLUETOOTH DEVICE

Make sure the Bluetooth function is available on your cell phone. Specific pairing procedures will be different depending on different cell phone. For detailed information, please refer to your cell phone's User Guide.

- If no device connection is made within 5 minutes of the earbuds being switched on, the earbuds will automatically be switched off to save power.
- After a successful pairing devices will memorize each. Therefore, no pairing will be needed next time.

PAIRING TO BLUETOOTH DEVICE (CONTINUED):

1. Keep the distance between the cell phone and the tzumi earbuds within 3 feet (for pairing only).
2. Press the multifunction button for a couple of seconds and the Tzumi Earbuds will turn on. The announcement "power on" will sound and the blue light will flash quickly. The device will go into pairing mode automatically until blue and red light flash alternately.

2

3. Activate the bluetooth function of the cell phone to search for bluetooth devices. After finishing the search, select "tzumi-earbuds" in the device list displayed.
4. Only for some electronic devices: Press "yes" or "enter" key to confirm the successful pairing.
5. After a successful connection, the blue light of the earbuds will flash quickly twice every few seconds.

CONNECTING TO OTHER BLUETOOTH DEVICES

This earbuds can set up connection with two Bluetooth devices at the same time (at most), and one of the connections is for hands-free profile (hfp).

1. First pair the earbuds with the Bluetooth transmitter (refer to **PAIRING TO BLUETOOTH CELL PHONE** section).
2. Switch off the Bluetooth transmitter.
3. Pair and connect the earbuds with Bluetooth cell phone (refer to **PAIRING TO BLUETOOTH CELL PHONE** section).
4. Switch on the transmitter again, and the transmitter will automatically initiate the connection to the earbuds.

FAQ's

Q: Why can't I turn the headset on?

A: Make sure your device is fully charged before using it for the first time. Your device can not be turned on if battery level is very low. Refer to Charging the Earbuds section of the manual.

FAQ's continued

Q: There is no sound during playback.

A: Check the connection between your device with phone or computer. If the connection is not established, please reconnect again. And adjust the volume level to a suitable level.

3

EARBUDS CONTROLS

Making and receiving calls

You can use your earbuds in various ways for handling calls.

- Answer call _____ Press
- End a call _____ Press
- Reject call _____ Press and hold for 2 seconds
- Redial last call _____ Quickly press 2 times

Listening to music

- Play music _____ Press
- Pause/resume music _____ Press
- Go to next song _____ Press and hold
- Go to previous song _____ Press and hold
- Power ON/OFF _____ Press and hold

Changing the volume

When needed, adjust the volume by pressing the keys (up) or (down) during a call or when listening to music.

IMPORTANT SAFEGUARDS

- Do not use this unit for anything other than its intended use.
- Keep the unit away from heat source, direct sunlight, humidity, water or any other liquid.
- Do not expose the device to extremely high or low temperatures, as it may damage the battery.
- Do not operate the unit if it has been wet or moist to prevent against electric shock and/or injury to yourself and damage to the unit.
- Do not use the unit if it has been dropped or damaged in any way.
- Repairs to electrical equipment should only be performed by a qualified electrician. Improper repairs may place the user at serious risk.
- Keep the unit out of reach of children.
- This unit is not a toy.

4

BATTERY DISPOSAL:

This product contains a lithium polymer battery. Lithium polymer batteries are environmentally safe when fully discharged. Please refer to your local and state laws for battery disposal procedures.

SPECIFICATIONS

Bluetooth Version	Bluetooth V4.0
Distance	Up to 49ft (15m)
Battery	Rechargeable lithium battery: 55mAh
Frequency	120-20KHz
Standby Time	Up to 18 hours
Charging Time	1.5 hours
Talk Time	up to 4.5 hours
Play Time	up to 4.5 hours (medium volume)
Input	90mA / 5V

NOTE: This equipment has been tested and found to comply with the limits for a Class B digital device, pursuant to part 15 of the FCC Rules. These limits are designed to provide reasonable protection against harmful interference in a residential installation. This equipment generates uses and can radiate radio frequency energy and, if not installed and used in accordance with the instructions, may cause harmful interference to radio or television reception. However, there is no guarantee that interference will not occur in a particular installation. If this equipment does cause harmful interference to radio or television reception, which can be determined by turning the equipment off and on, the user is encouraged to try to correct the interference by one or more of the following measures:

Reorient or relocate the receiving antenna.
Increase the separation between the equipment and receiver.
Connect the equipment into an outlet on a circuit different from that to which the receiver is connected.
Consult the dealer or an experienced radio/TV technician for help

Changes or modifications not expressly approved by the party responsible for compliance could void the user's authority to operate the equipment. This device complies with Part 15 of the FCC Rules. Operation is subject to the following two conditions:

- (1) this device may not cause harmful interference, and
- (2) this device must accept any interference received, including interference that may cause undesired operation.