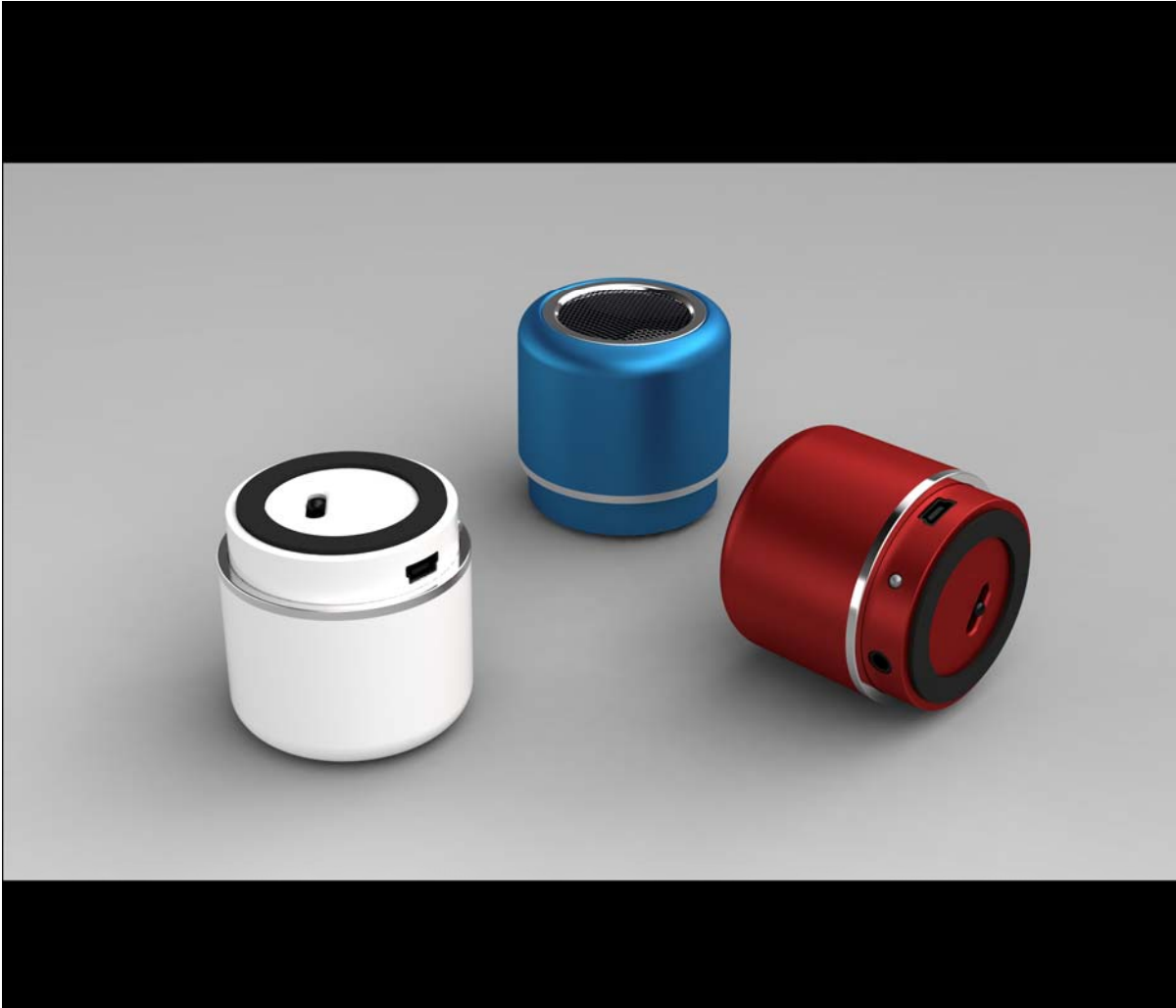


Bluetooth Speaker

Model:AF-MCB05



USER MANUAL

The product is a kind of HI-FI multi-function MINI Bluetooth Speaker. It can play music by receiving from phone music playing which supports stereo Bluetooth music. The LINE IN input interface on the speaker can also be used to Play music without Bluetooth.

● **Main function:**

1. Specific stereo Bluetooth music playing function
2. LINE IN audio input music playing function
3. Equipped with Bluetooth pilot lamp,it is convenient to indicate Bluetooth working status(pairing, TaskState,working etc)
4. Equipped with LINE IN pilot lamp,it keeps lit when LINE IN is working.
5. Power switch on the bottom of the speaker. The function can turn on, off and able to turn on the Bluetooth.

● **Instructions (Note: The device, called AF-MCB05, pair Code: 0000)**

- 1 Working status options:
Choose work status by toggling switch of the mini Speaker.
Switch is in the middle(OFF), when not in use
Switch to the left(Bluetooth), LED is blue color and blink once every 4 seconds
Switch to the right(ON), LED is red color and keeps lit.
2. Play Bluetooth music (let us take mobile phone for example)
 - a. Making switch to Bluetooth, after 3 seconds, hear the Beep once, then Bluetooth indicator will blink quickly and it means that it has entered Bluetooth pairing status.
 - b. Turn on the Bluetooth function of mobile phone to search for Bluetooth device.When it finds the Bluetooth device(AF-MCB05), select it and it will be prompted for a password (Note: Some mobile phone can be connected directly without entering pairing code. If it was paired before, no need to enter pairing code), enter "0000" number, press "Yes" to connect the Bluetooth device(AF-MCB05).
 - c. The audio device will show the sign of success after it connects to Bluetooth.
 - d. Play music from your audio device, the Bluetooth speaker works.
 - e. Bluetooth re-connection
 - 1)When audio device and Bluetooth communication beyond the effective range, it will be disconnected. After the phone back to the effective range, you have to reconnect Bluetooth.
 - 2) When Bluetooth power is cut off, re-switch to the Bluetooth status, select Bluetooth to connect.
3. Play music from audio device(mobile phone or computer...etc)
The speaker is designed with a standard LINE IN input interface. Switch to LINE IN, the red lamp keep lit, meanwhile, connect the speaker with any audio device that has 3.5mm jack directly, it can play music.
- 4 Low power indication:
When battery is low, the Bluetooth speaker will make a beep every 30 seconds during playing music, please recharge it in time to continuous use.

● Product's Specifications

- 1 Work voltage :3.6-4.2 V
- 2 Work current: <30mA (Bluetooth module)
- 3 Work current: <400mA (power amplifier, Bluetooth)
- 4 Standby current: <3mA
- 5 Scope: <10 meters of wireless communication (consistent with the Bluetooth protocol specifications CLASS 2)
- 6 Transmit power: Class2 less than 4dbm, low radiation.
- 7 Spread spectrum: Frequency Hopping Spread Spectrum
- 8 Bluetooth version: compatible with V2.1, V2.0, V1.1 and V1.2 standard.
- 9 Bluetooth protocol support: A2DP, AVRCP
- 10 Frequency range :2.402-2.480 GHz (2.4GHz ISM Segment)
- 11 The receiver sensitivity: <-90dBm, BER <0.1%
- 12 SNR: 95dB
- 13 Distortion: <0.2%
- 14 Frequency Response: 20HZ-20kHz
- 15 Operating temperature: -10°C ~ 55 °C
- 16 Coincide with IEEE 802.11

This device complies with Part 15 of the FCC Rules.

Operation is subject to the following two conditions:

- (1) this device may not cause harmful interference, and
- (2) this device must accept any interference received, including interference that may cause undesired operation.

Statement

Note: This equipment has been tested and found to comply with the limits for a Class B digital device, pursuant to Part 15 of the FCC Rules. These limits are designed to provide reasonable protection against harmful interference in a residential installation. This equipment generates, uses and can radiate radio frequency energy and, if not installed and used in accordance with the instructions, may cause harmful interference to radio communications.

However, there is no guarantee that interference will not occur in a particular installation. If this equipment does cause harmful interference to radio or television reception, which can be determined by turning the equipment off and on, the user is encouraged to try to correct the interference by one or more of the following measures:

Reorient or relocate the receiving antenna.

Increase the separation between the equipment and receiver.

Connect the equipment into an outlet on a circuit different from that to which the receiver is connected.

Consult the dealer or an experienced radio/TV technician for help.

Warning: Changes or modifications to this unit not expressly approved by the part responsible for compliance could void the user's authority to operate the equipment.

FCC RF warning statement:

This equipment complies with FCC radiation exposure limits set forth for an uncontrolled environment. This equipment should be installed and operated with minimum distance 20cm between the radiator & your body.