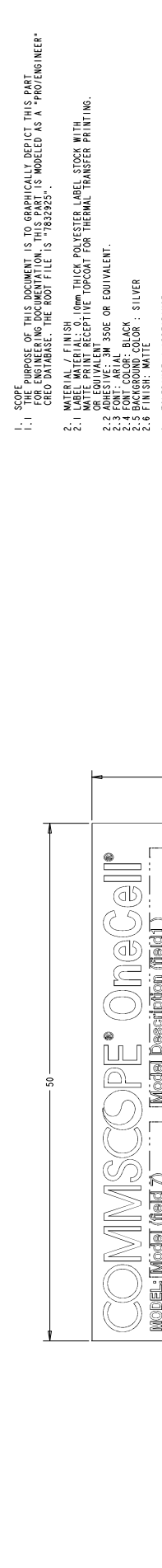


REV	CMO	DATE	APPROV
D	000007034542	12-10-2013	



- 1. SCOPE**
- 1.1 THE PURPOSE OF THIS DOCUMENT IS TO GRAPHICALLY DEPICT THIS PART OR ENGINEERING DOCUMENTATION. THIS PART IS MODELED AS A "PROVENIENR" CRO DATABASE. THE ROOT FILE IS "7832925".
- 2. MATERIAL / FINISH**
- 2.1 LABEL PRINTED ON 100μm THICK POLYESTER LABEL STICK WITH WHITE BACKGROUND. RESISTIVE TOPCOAT FOR THERMAL TRANSFER PRINTING. OR EQUIVALENT.
- 2.2 ADHESIVE: 3M 3506 OR EQUIVALENT.
- 2.3 FONT: 10PT. ALL CAPITAL LETTERS.
- 2.4 FONT COLOR: BLACK
- 2.5 BACKGROUND COLOR: SILVER
- 2.6 FINISH: MATTE
- 3. TOLERANCE / APPEARANCE**
- 3.1 ALL DIMENSIONS ARE IN MILLIMETERS.
- 4. SUPPLIER**
- 4.1 NO CHANGES SHALL BE ALLOWED ON PART GEOMETRY, MATERIALS, PROCESSES, OR MANUFACTURING LOCATIONS, WITHOUT PRIOR EXPLICIT WRITTEN APPROVAL BY COMMSCOPE DEVELOPMENT AND CONTRACT MANUFACTURING. SEE SPECIFICATION ENK0092.
- 4.2 WHERE THERE IS A DISCREPANCY BETWEEN THE PRINT NOTE AND AN APPLICABLE DOCUMENT NOTE, THE PRINT NOTE SUPERSEDES.
- 4.3 WHERE THERE IS A CONFLICT BETWEEN THIS PRINT NOTE AND AN APPLICABLE DOCUMENT NOTE, THE PRINT NOTE SUPERSEDES.
- 5. SERIAL NUMBER FORMAT**
- 5.1 SERIAL NUMBER TO BE IN THE FORMAT SHOWN BELOW:
- YYWWXXXX
 YY : YEAR
 WW : WEEK
 XXXXXX : Factory Code
 XXXXXX : Serial numbers 000001-999999

ORDER NUMBER BAR CODE SERIAL NUMBER BAR CODE

PART NUMBER	DESCRIPTION	FCC ID	IC ID	FCC-FIELD	IC-FIELD	ORDER NUMBER FIELD1	SERIAL NUMBER FIELD2	M/D NUMBER AND REVISION FIELD3	FIELD4	FIELD5	FIELD6	FIELD7	IC-BOX	IC-EXTRUDE	IC-FIELD	IC-ID
7832925-1	N	N	N	N	N	20MHz SSA 2x2 Radio Module B01	0HYRPM-ASA11-B01		0C-10R0-A01	11022004307	7817666-00	RPM-15A11-B01	N	N	N	N
7832925-2	Y	Y	Y	Y	Y	20MHz SSA 2x2 Radio Module B02	0HYRPM-ASA11-B02		0C-10R0-A02	11022004308	7830913-00	RPM-ASA11-B02	N	N	N	N
7832925-3	N	N	N	N	N	20MHz SSA 2x2 Radio Module B03	0HYRPM-WSA11-B03		0C-10R0-A03	11022004309	7817667-00	RPM-15A11-B03	N	N	N	N
7832925-4	Y	Y	Y	Y	Y	20MHz SSA 2x2 Radio Module B04	0HYRPM-WSA11-B04		0C-10R0-A04	11022004310	7830917-00	RPM-WSA11-B04	N	N	N	N
7832925-5	N	N	N	N	N	20MHz SSA 2x2 Radio Module B05	0HYRPM-WSA11-B05		0C-10R0-A05	11022004307	7778116-00	RPM-15A11-B07	N	N	N	N
7832925-6	Y	Y	Y	Y	Y	20MHz SSA 2x2 Radio Module B12	0HYRPM-ASA11-B12		0C-10R0-A12	11022004308	7830915-00	RPM-ASA11-B12	N	N	N	N
7832925-7	Y	Y	Y	Y	Y	20MHz SSA 2x2 Radio Module B14	0HYRPM-ASA11-B14		0C-10R0-A14	11022004309	7830916-00	RPM-ASA11-B14	N	N	N	N
7832925-8	Y	Y	Y	Y	Y	20MHz SSA 2x2 Radio Module B30	0HYRPM-ASA11-B30		0C-10R0-A30	11022004310	7830918-00	RPM-ASA11-B30	N	N	N	N
7832925-9	Y	Y	Y	Y	Y	20MHz SSA 2x2 Radio Module B66	0HYRPM-ASA11-B66		0C-10R0-A66	11022004307	7830914-00	RPM-ASA11-B66	N	N	N	N

COMMSCOPE, INC.
 SUP MATERIAL MASTER

REFERENCES: SEE TABLE
 MATERIAL: N/A
 SEE NOTES

DATE: 12-10-2013
 DRAWING: 7832925

SCALE: A:1 5:1
 SHEET: K. CRAIG
 CHECKED: K. CRAIG
 ENGINEER: K. CRAIG
 DOKUMENT NO.: 7832925

MODEL: 7832925
 STATUS: 00
 REVISION: 03
 DRAWING: 03
 SHEET: 02

© 2016 ComScope, Inc. Confidential
 www.comscope.com

COMMSCOPE® OneCell®
MODEL: RPH-ASA11-B01
FCC ID: CC-10R0-A01
ID No: 00-10R0-A01
SN: 11027004307
MID: 7832925-00
MADE IN CHINA
For Patents See www.CS-pat.com

7832925-1

COMMSCOPE® OneCell®
MODEL: RPH-ASA11-B02
FCC ID: CC-10R0-A02
ID No: 00-10R0-A02
SN: 11027004308
MID: 7832925-00
MADE IN CHINA
For Patents See www.CS-pat.com

7832925-2

COMMSCOPE® OneCell®
MODEL: RPH-ASA11-B03
FCC ID: CC-10R0-A03
ID No: 00-10R0-A03
SN: 11027004309
MID: 7832925-00
MADE IN CHINA
For Patents See www.CS-pat.com

7832925-3

COMMSCOPE® OneCell®
MODEL: RPH-ASA11-B05
FCC ID: CC-10R0-A05
ID No: 00-10R0-A05
SN: 11027004310
MID: 7832925-00
MADE IN CHINA
For Patents See www.CS-pat.com

7832925-4

COMMSCOPE® OneCell®
MODEL: RPH-ASA11-B07
FCC ID: CC-10R0-A07
ID No: 00-10R0-A07
SN: 11027004307
MID: 77791184-00
MADE IN CHINA
For Patents See www.CS-pat.com

7832925-5

COMMSCOPE® OneCell®
MODEL: CHYRPM-ASA11-B12
FCC ID: CC-10R0-A12
ID No: 00-10R0-A12
SN: 11027004309
MID: 7832925-00
MADE IN CHINA
For Patents See www.CS-pat.com

7832925-6

COMMSCOPE® OneCell®
MODEL: CHYRPM-ASA11-B14
FCC ID: CC-10R0-A14
ID No: 00-10R0-A14
SN: 11027004309
MID: 7832925-00
MADE IN CHINA
For Patents See www.CS-pat.com

7832925-7

COMMSCOPE® OneCell®
MODEL: CHYRPM-ASA11-B30
FCC ID: CC-10R0-A30
ID No: 00-10R0-A30
SN: 11027004310
MID: 7832925-00
MADE IN CHINA
For Patents See www.CS-pat.com

7832925-8

COMMSCOPE® OneCell®
MODEL: RPH-ASA11-B08
FCC ID: CC-10R0-A08
ID No: 00-10R0-A08
SN: 11027004307
MID: 7832925-00
MADE IN CHINA
For Patents See www.CS-pat.com

7832925-9

TITLE		COMMSCOPE, INC. OF NORTH CAROLINA	
LABEL, REG/PRODUCT ID, RPS1001, ONECELL NGRP			
SIZE	SCALE	DOCUMENT NO.	
A	5:1	7832925	
DRAWING		SHEET	
REVISION		REVISION	
03	D	03	D

© 2016 Commscope, Inc. Confidential
This drawing is the property of Commscope, Inc. and is not to be distributed, copied, or used in any way without the written permission of Commscope, Inc.