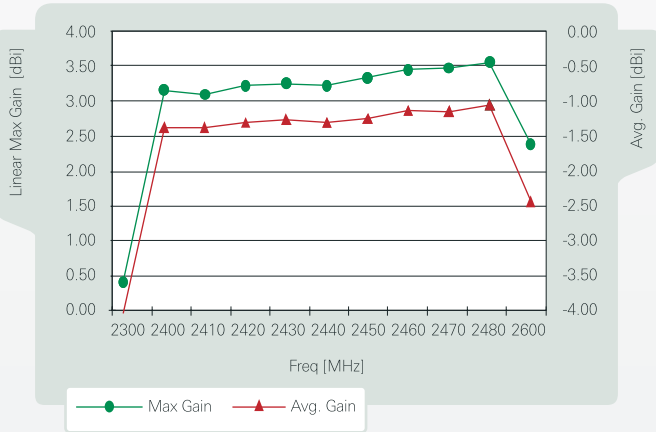


Dualband WLAN Ceramic Chip Antenna

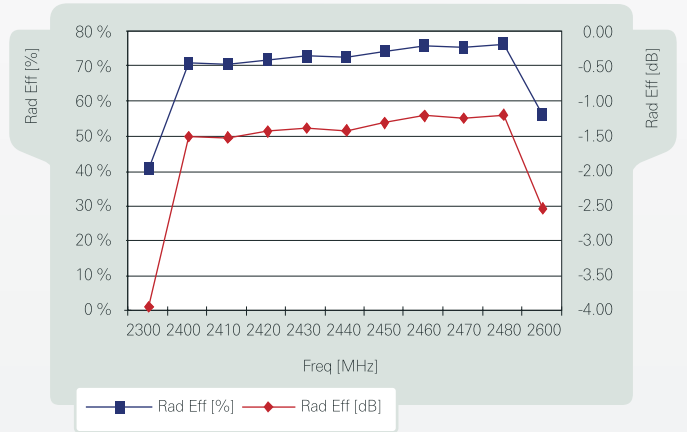
Ground cleared under antenna 11.60 x 6.00 mm. Pulse Part Number: W3006

2,4 GHz free space efficiency and maximum gain

DualBand WiFi 2.4G 10 x 3.2 x 1.5 mm

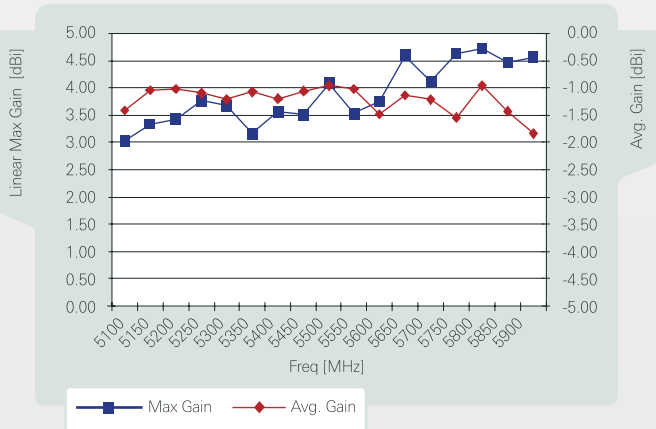


DualBand WiFi 2.4G 10 x 3.2 x 1.5 mm

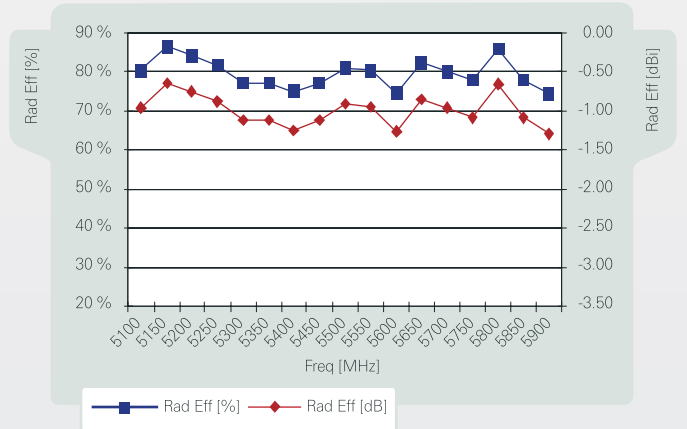


5 GHz free space efficiency and maximum gain

DualBand WiFi 5G 10 x 3.2 x 1.5 mm



DualBand WiFi 5G 10 x 3.2 x 1.5 mm



Pulse Finland Oy

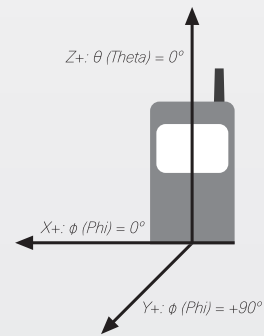
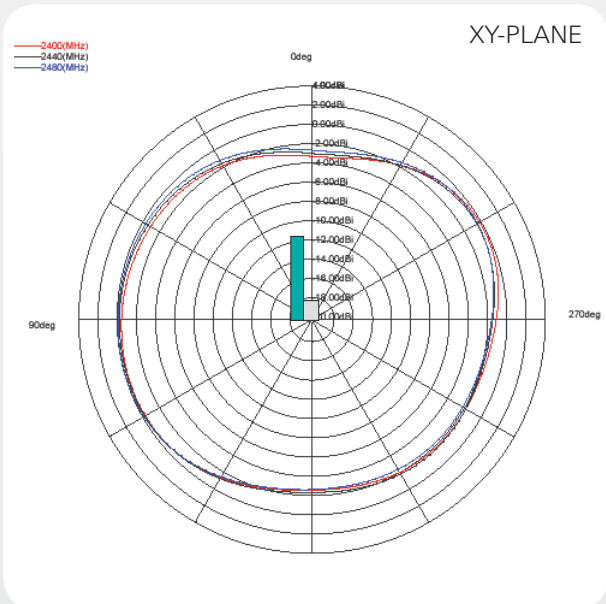
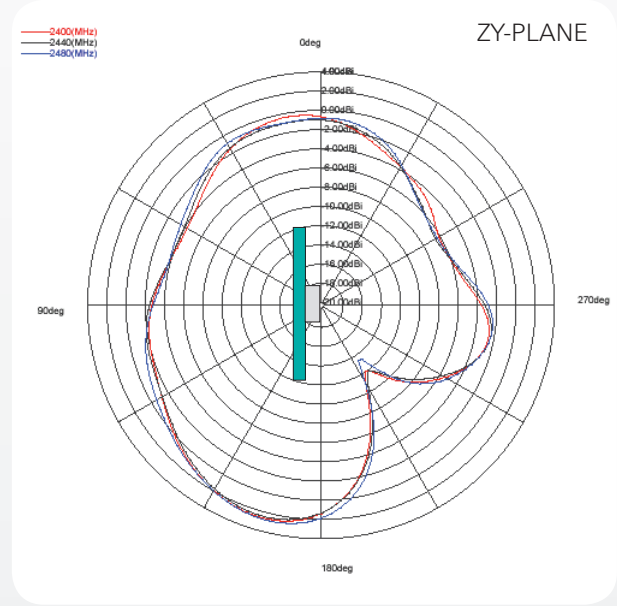
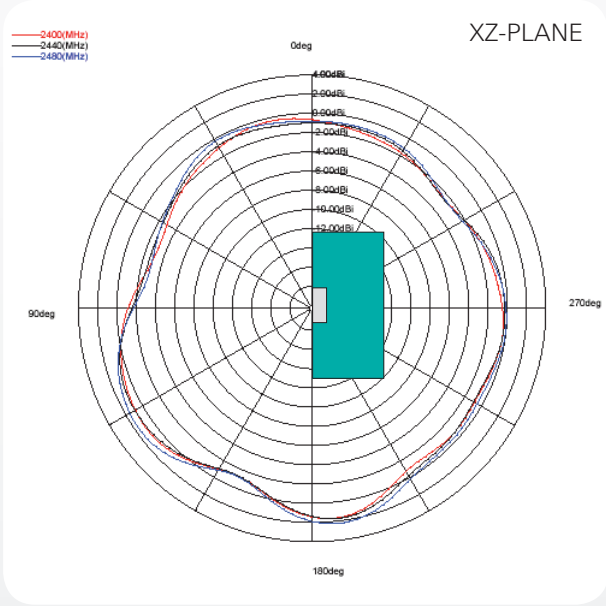
Takatie 6
 90440 Kempele, Finland
 Tel: +358 207 935 500
 Fax: +358 207 935 501
www.pulseeng.com/antennas



Dualband WLAN Ceramic Chip Antenna

Ground cleared under antenna 11.60 x 6.00 mm. Pulse Part Number: W3006

2,4 GHz Typical Free space Radiation Patterns



Pulse Finland Oy

Takatie 6

90440 Kempele, Finland

Tel: +358 207 935 500

Fax: +358 207 935 501

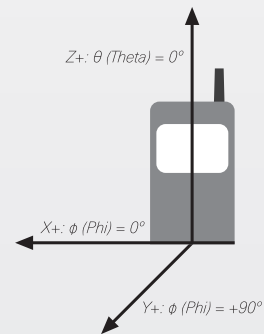
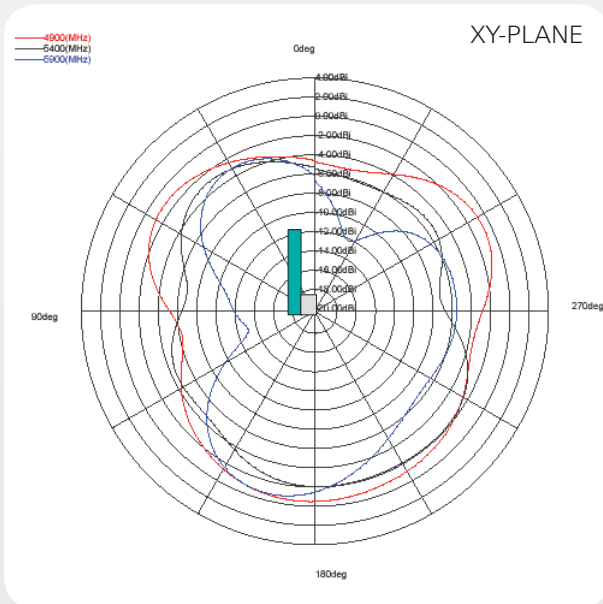
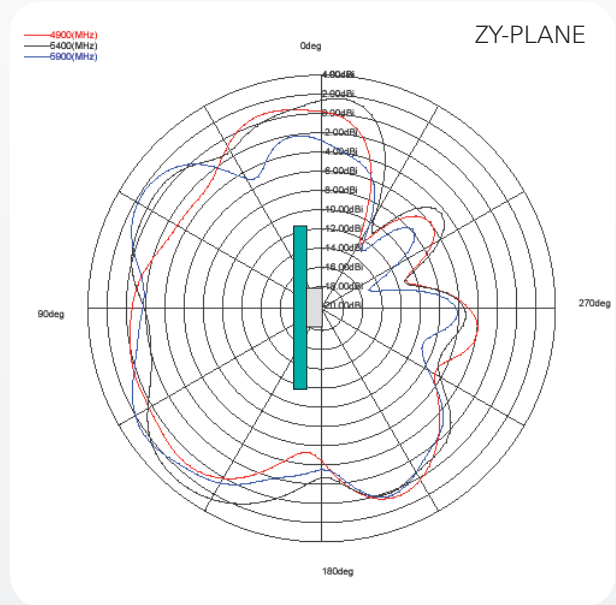
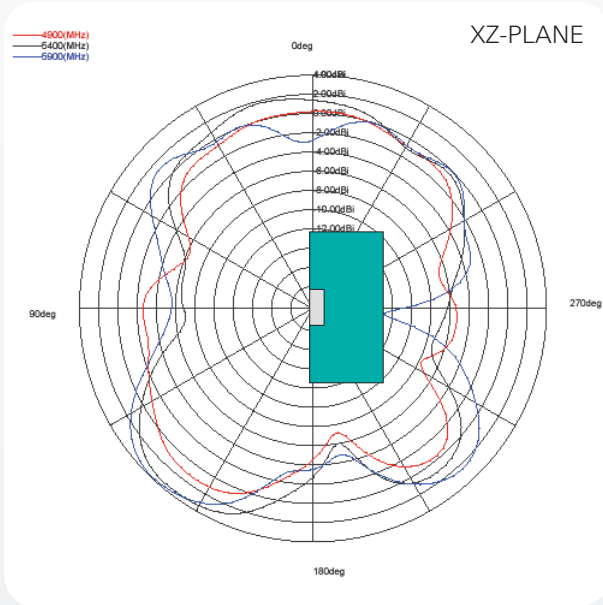
www.pulseeng.com/antennas



Dualband WLAN Ceramic Chip Antenna

Ground cleared under antenna 11.60 x 6.00 mm. Pulse Part Number: W3006

5 GHz Typical Free space Radiation Patterns



Pulse Finland Oy

Takatie 6
90440 Kempele, Finland

Tel: +358 207 935 500

Fax: +358 207 935 501

www.pulseeng.com/antennas

