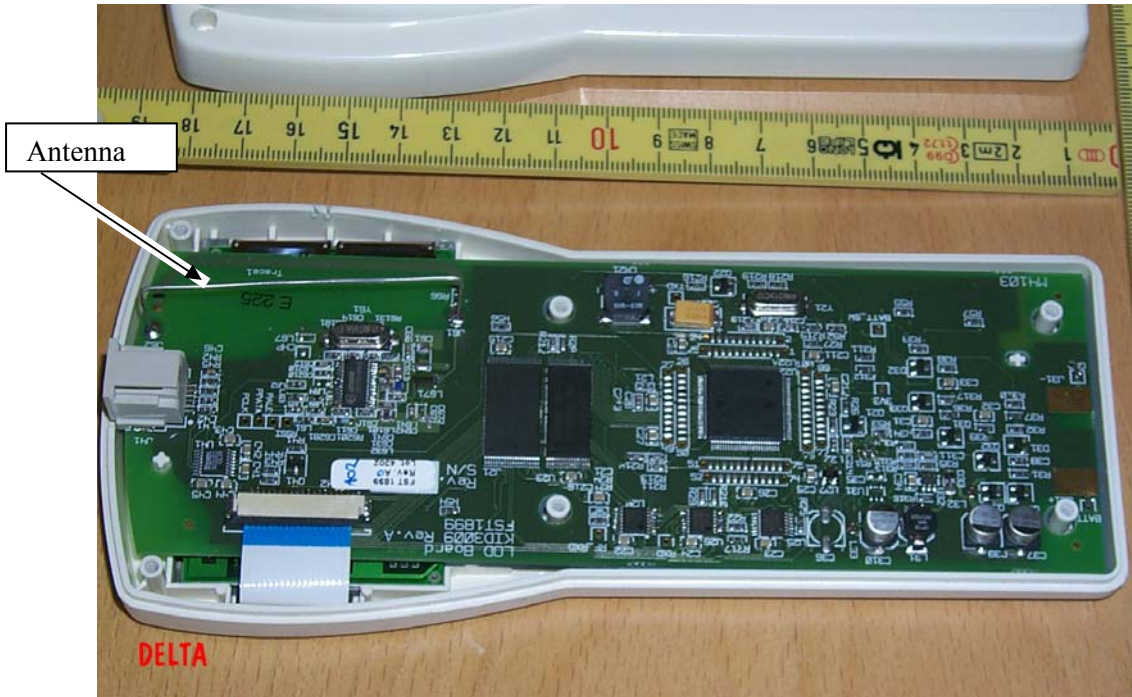
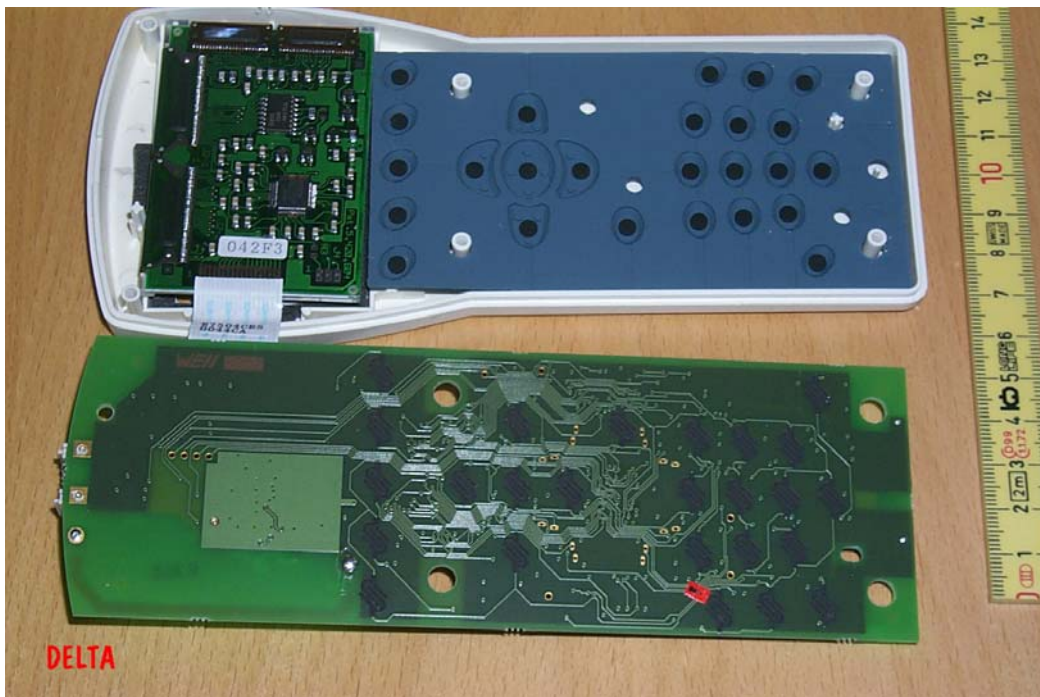


Laerdal VitalSim Operating Device Internal photo

FCC ID QHQ-FST1909



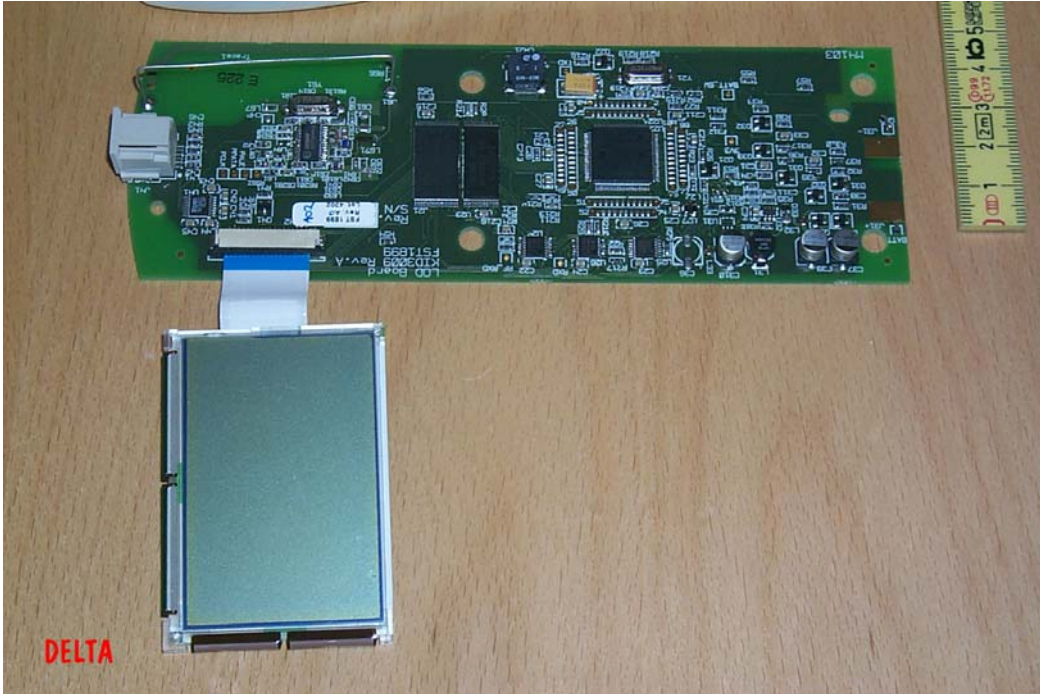
Rear view. The radio is between 14 and 15 cm marks. The antenna is a wire above the PCB



Main PCB turned upside-down. Display print visible.

Laerdal VitalSim Operating Device Internal photo

FCC ID QHQ-FST1909



Front view of display unit. Component side of main PCB.



Distance between antenna and hand during normal operation is larger than 2,5 cm.