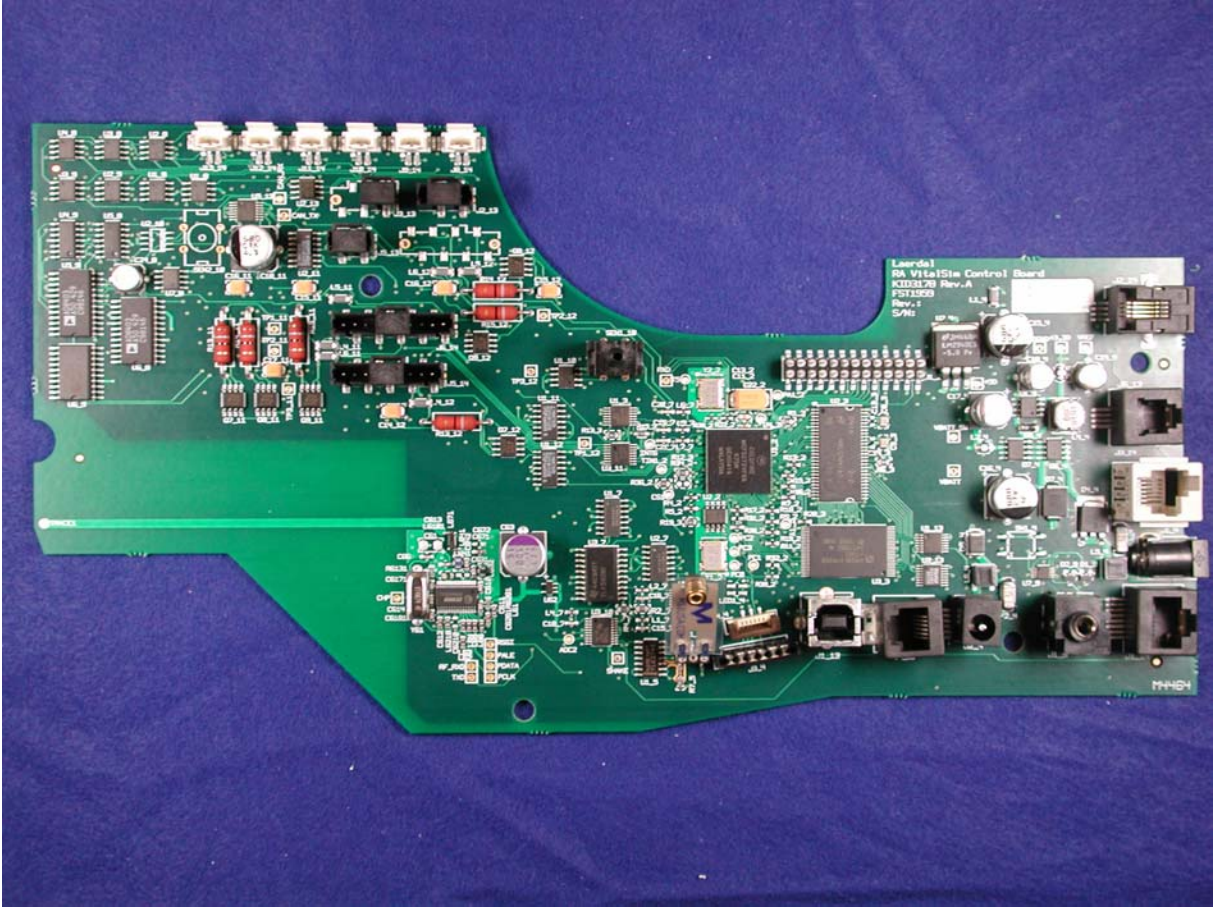
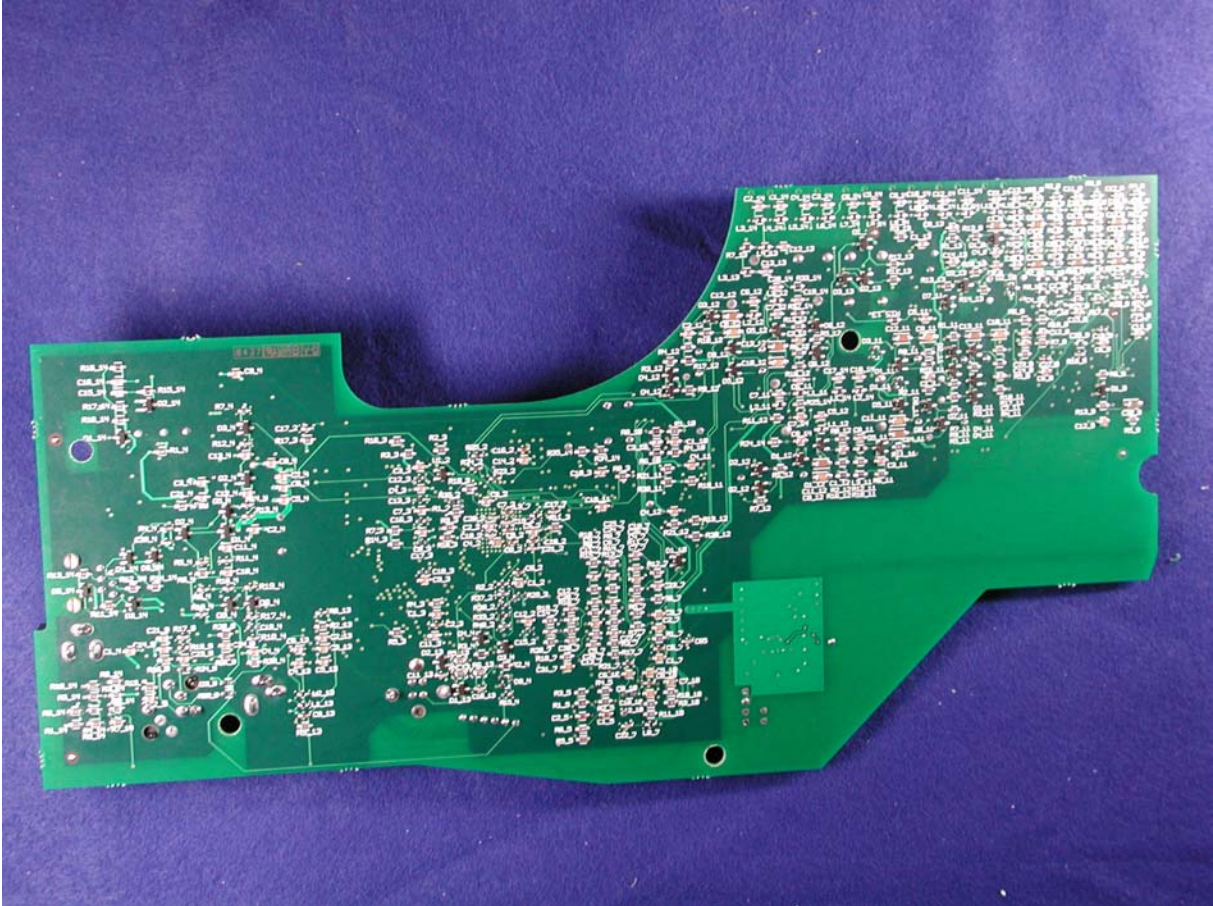


Resusci Anne Simulator Pictures. (FCC ID QHQ-150-00001)

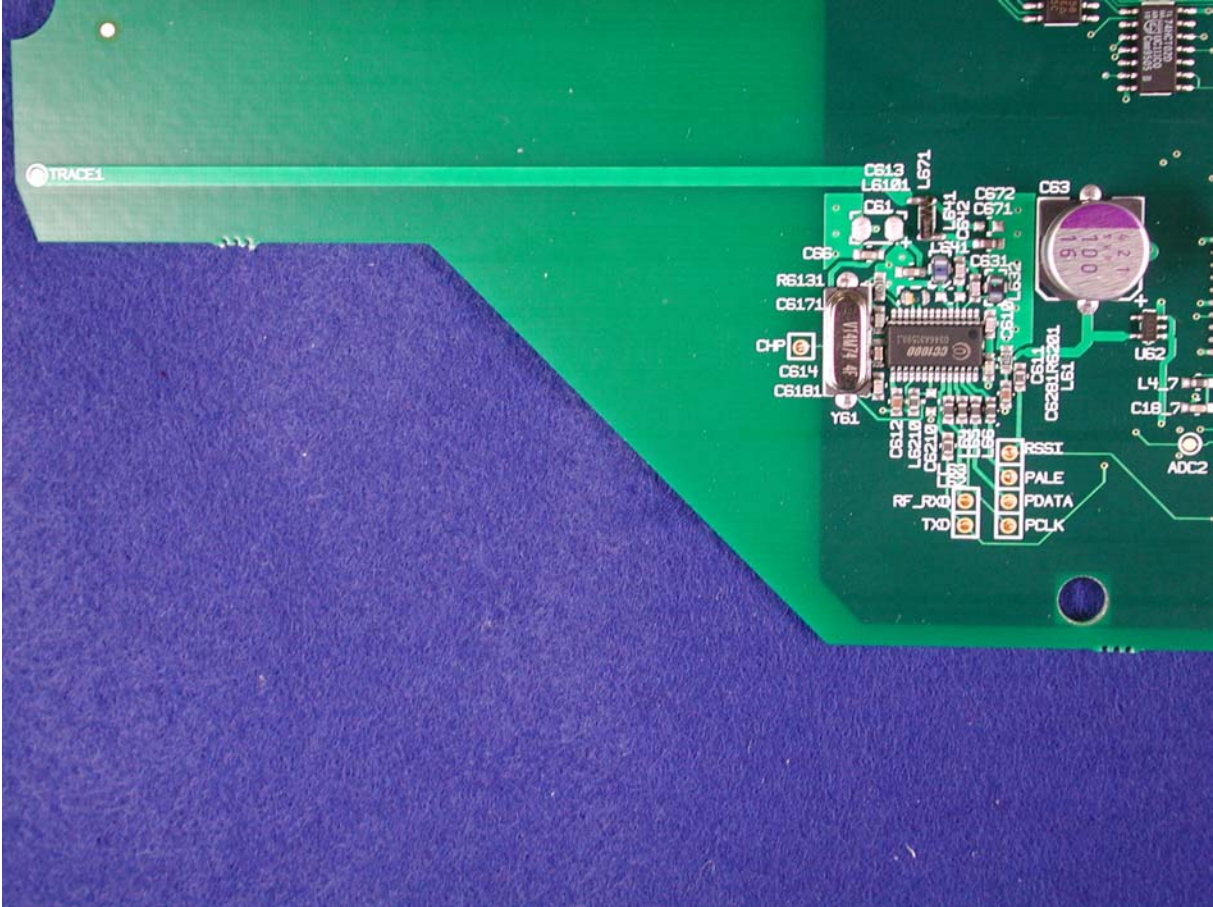
RA VitalSim Control Board Top side



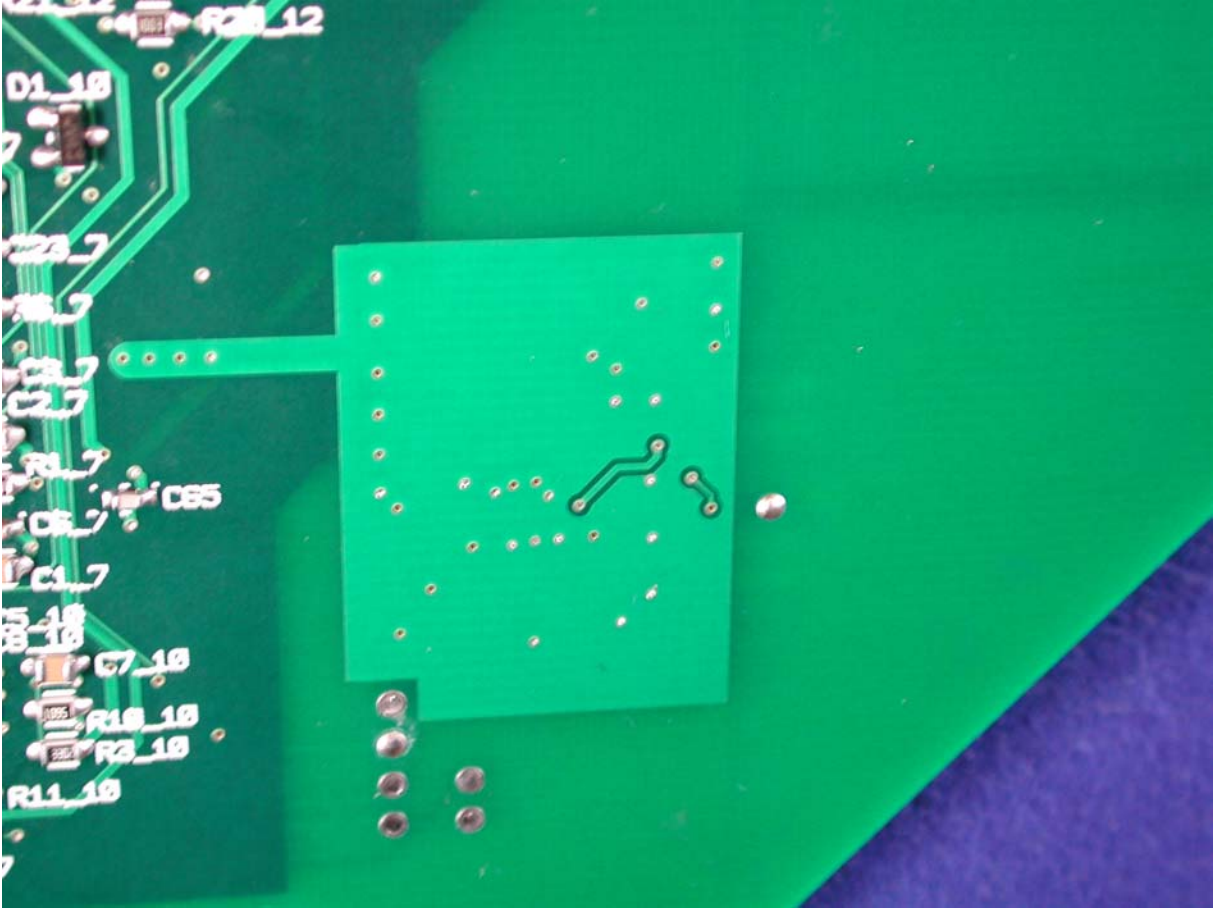
RA VitalSim Control Board Bottom side



RA VitalSim Control Board RF part. Top side

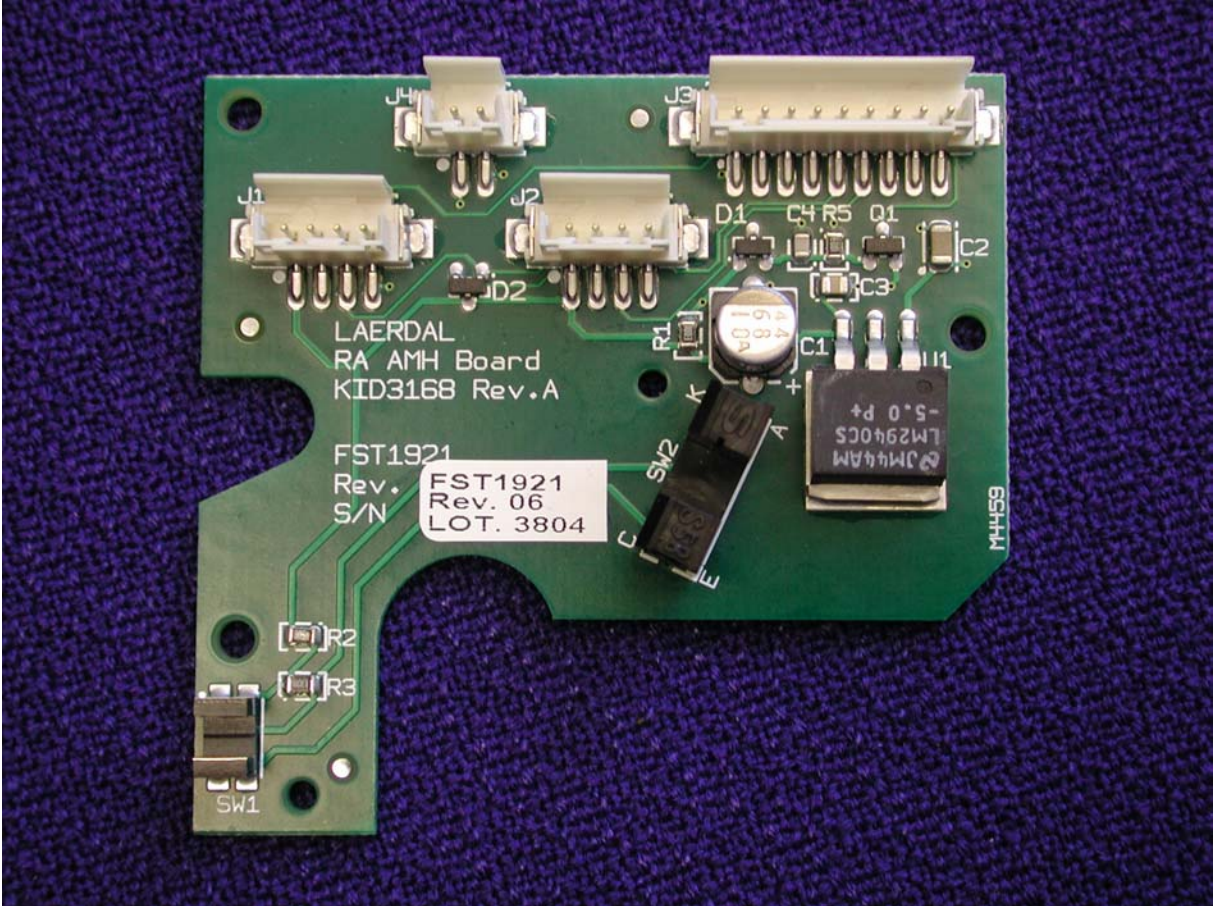


RA VitalSim Control Board RF part. Bottom side

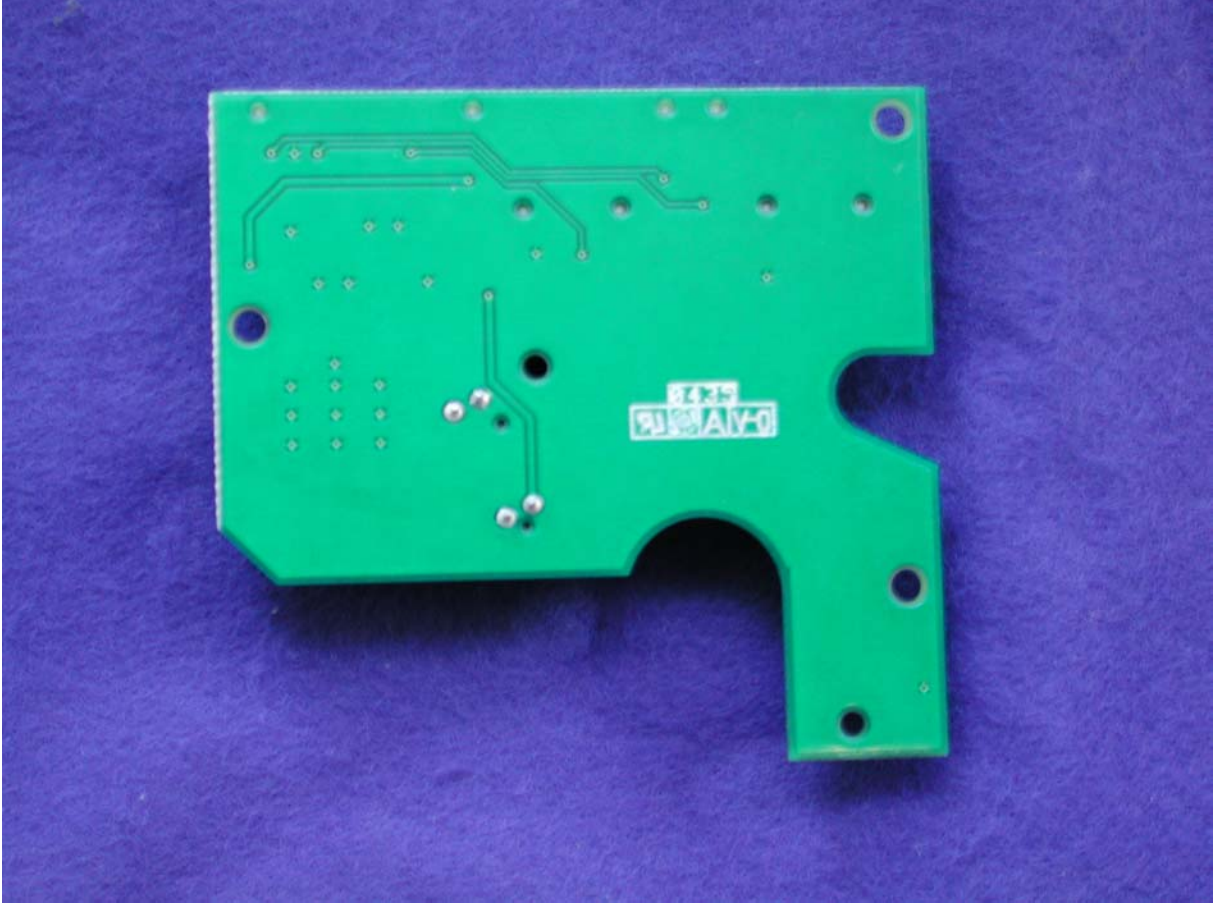


RA AMH Board (Airway Management Head Board). Top side.

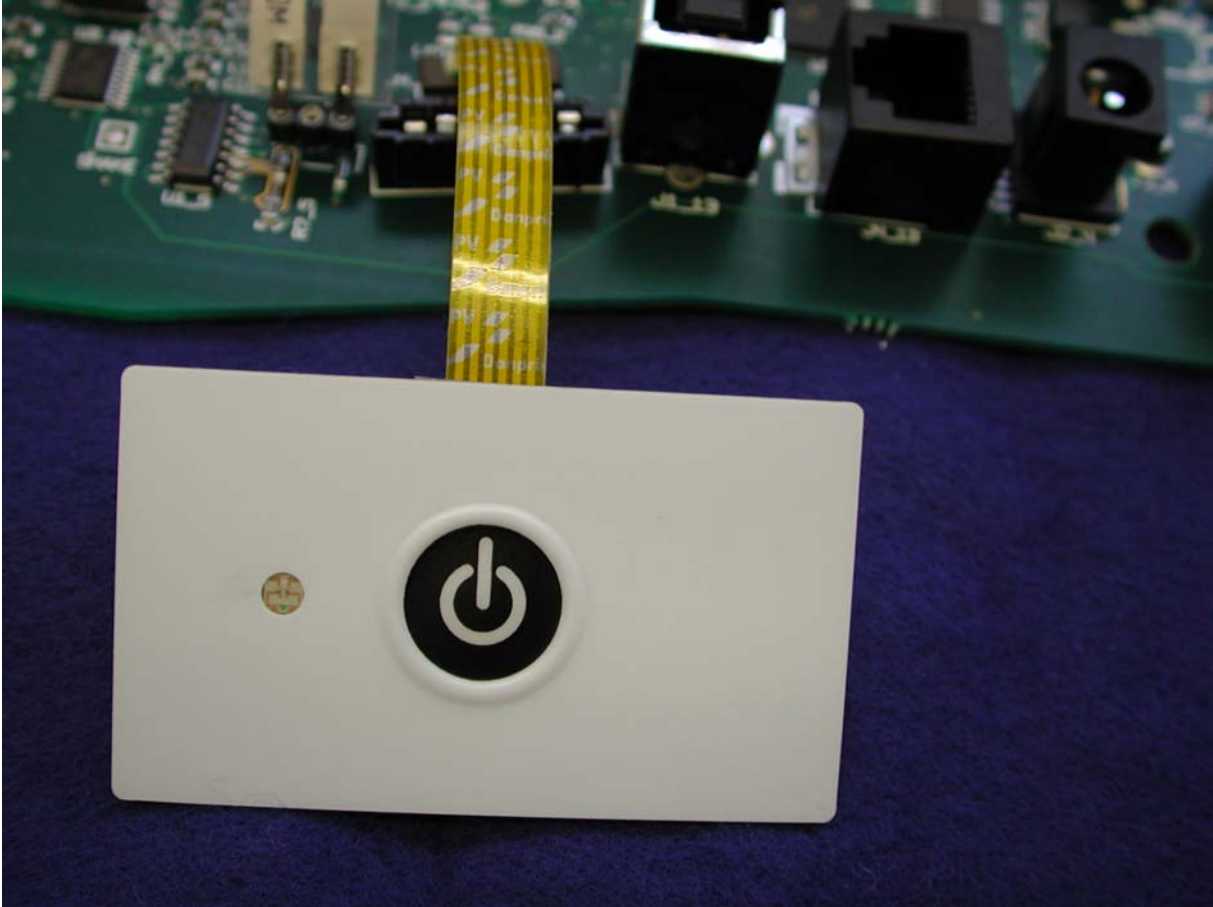
-This board is located in the head of the manikin



RA AMH Board (Airway Management Head Board). Bottom side.



RA Vital Sim Keyboard. Top side

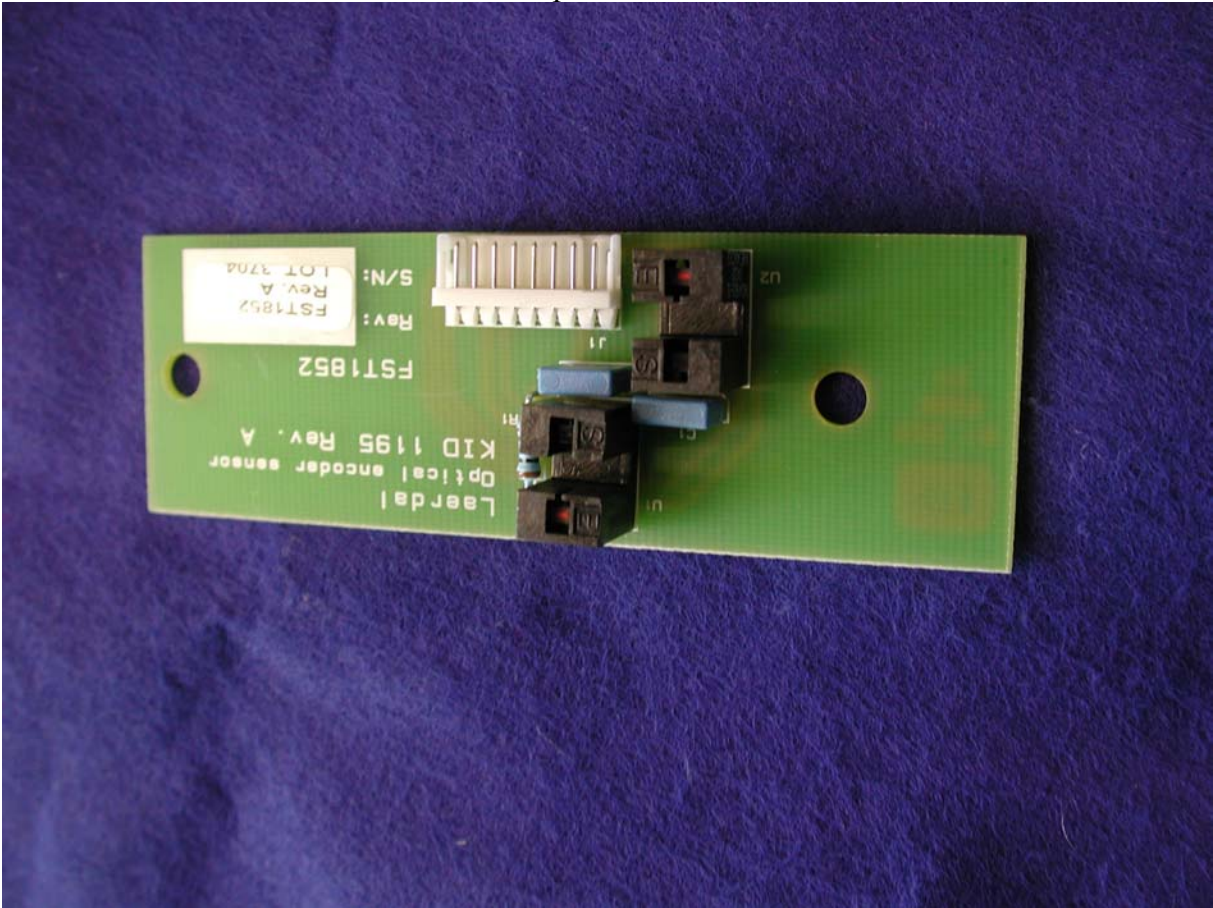


RA Vital Sim Keyboard. Bottom side

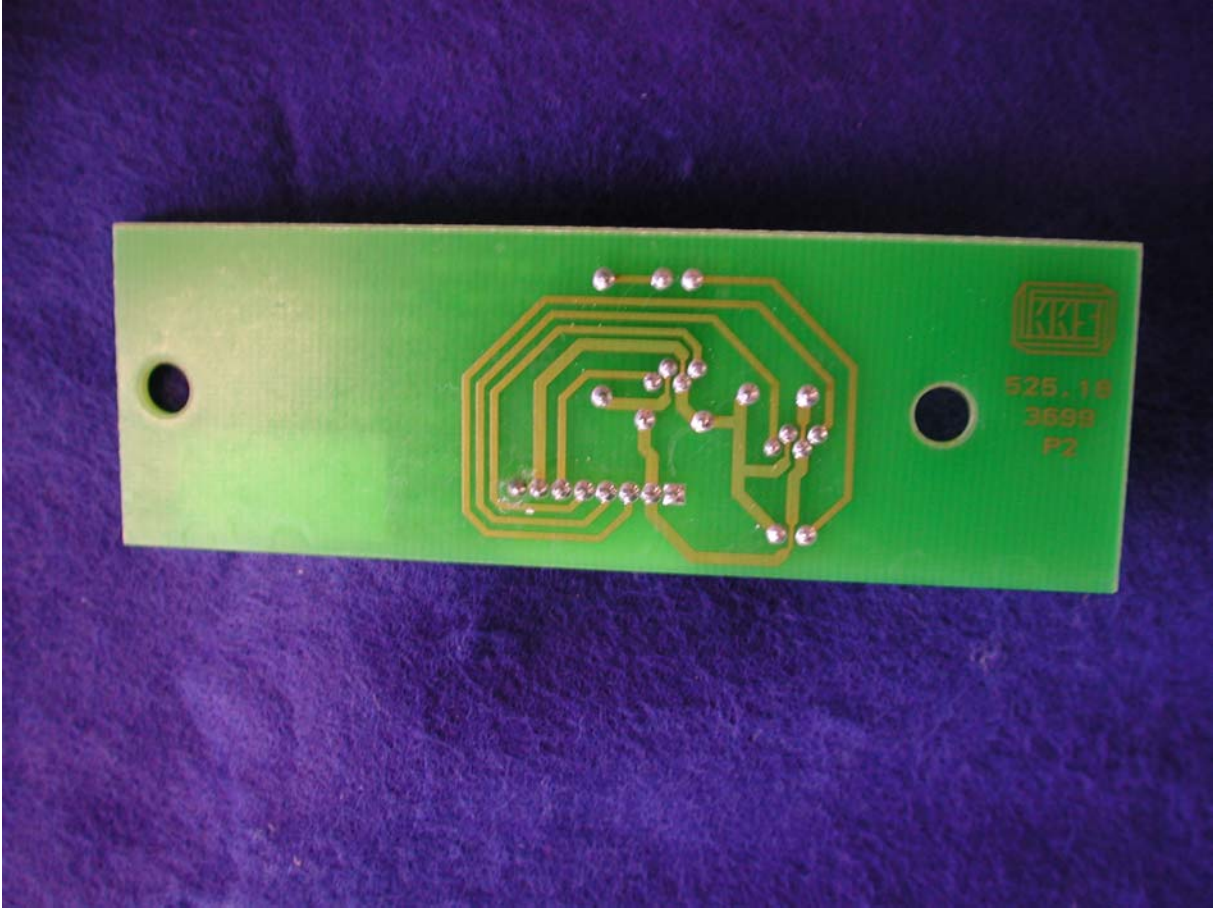


Optical Encoder Board. Top side.

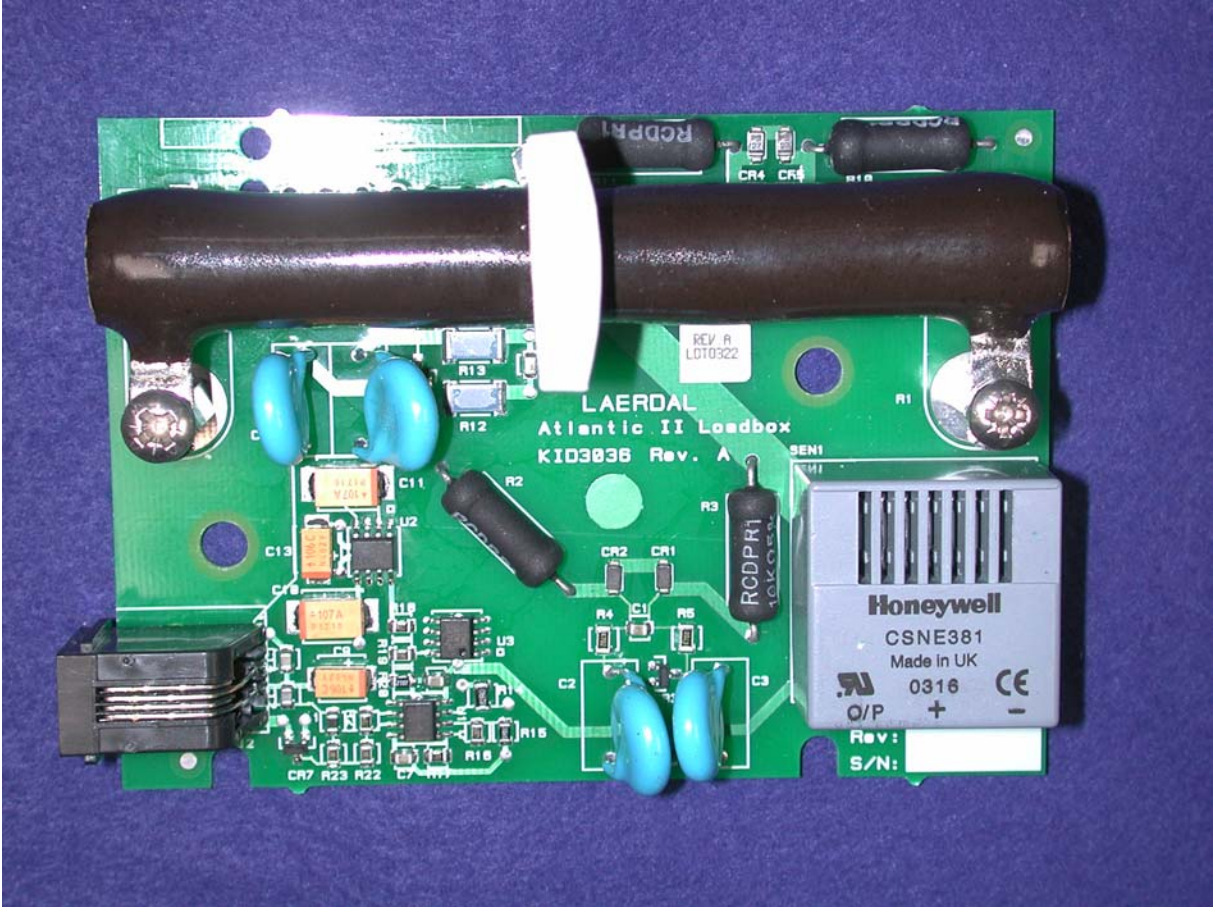
-This board is located on Ventillation/Compression Sensor unit



Optical Encoder Board. Bottom side.



Loadbox board. Top side



Loadbox board. Bottom side

