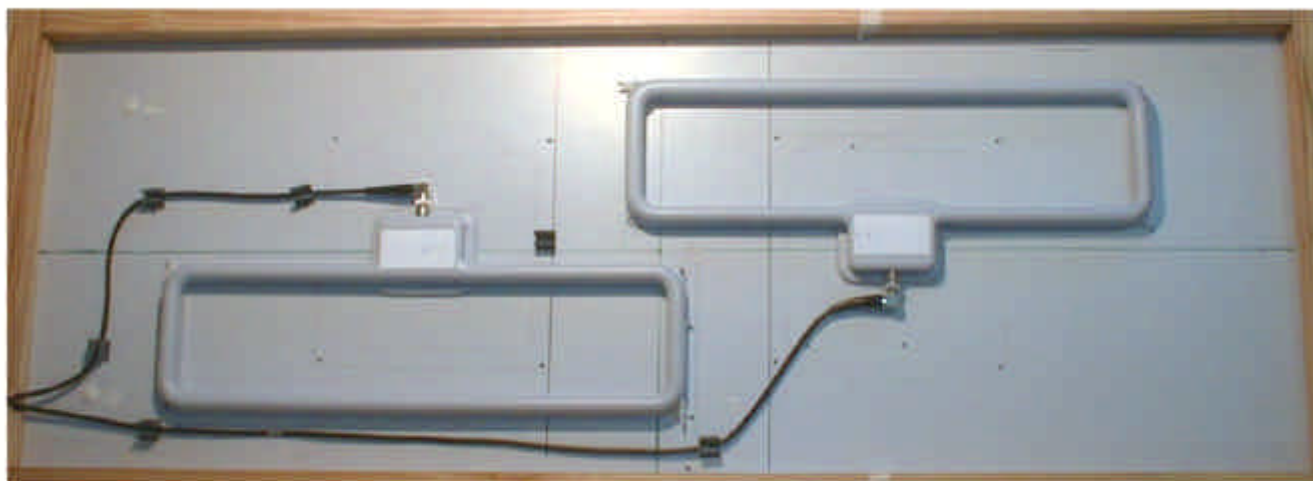
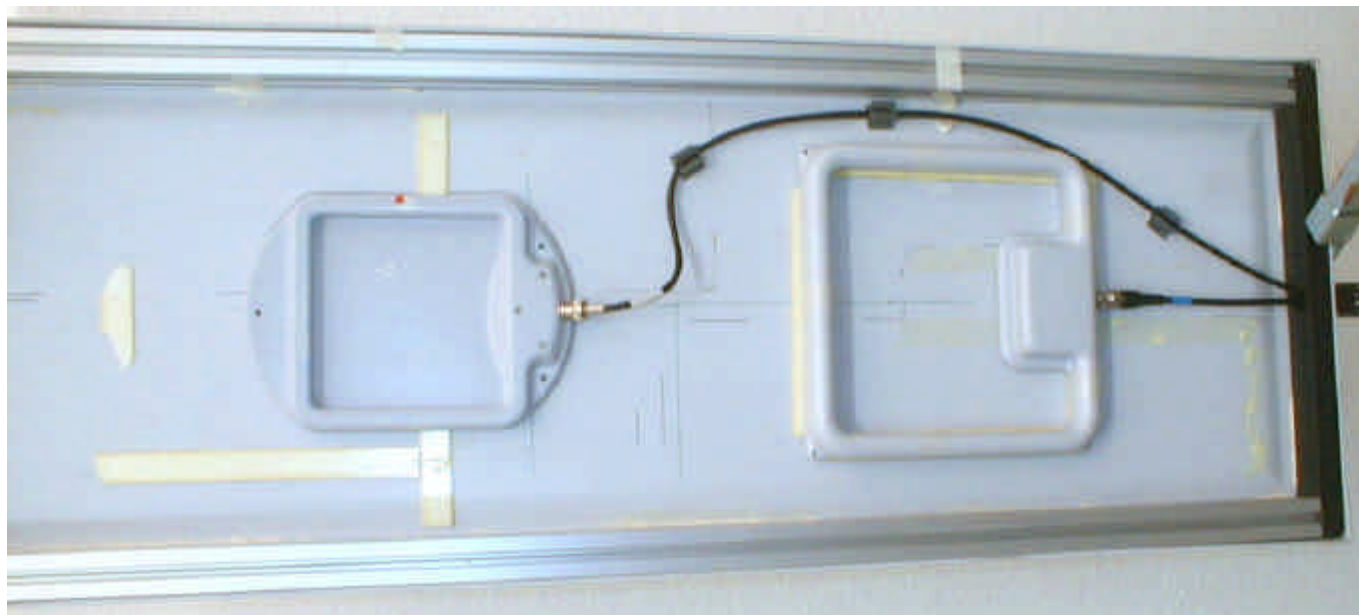


## 1 INTERNAL PHOTOS OF TESTED EUT

### 1.1 Conveyor antenna



Setup for 120x470 antennas



Setup for 200x200 & 140x140 antennas

## 1.2 200x200 Antenna



**View of 200x200 antenna (Front & Rear face)**



**Detail View of 200x200 antenna without fences**

### 1.3 140x140 Antenna



View of 140x140 antenna (font & rear face)

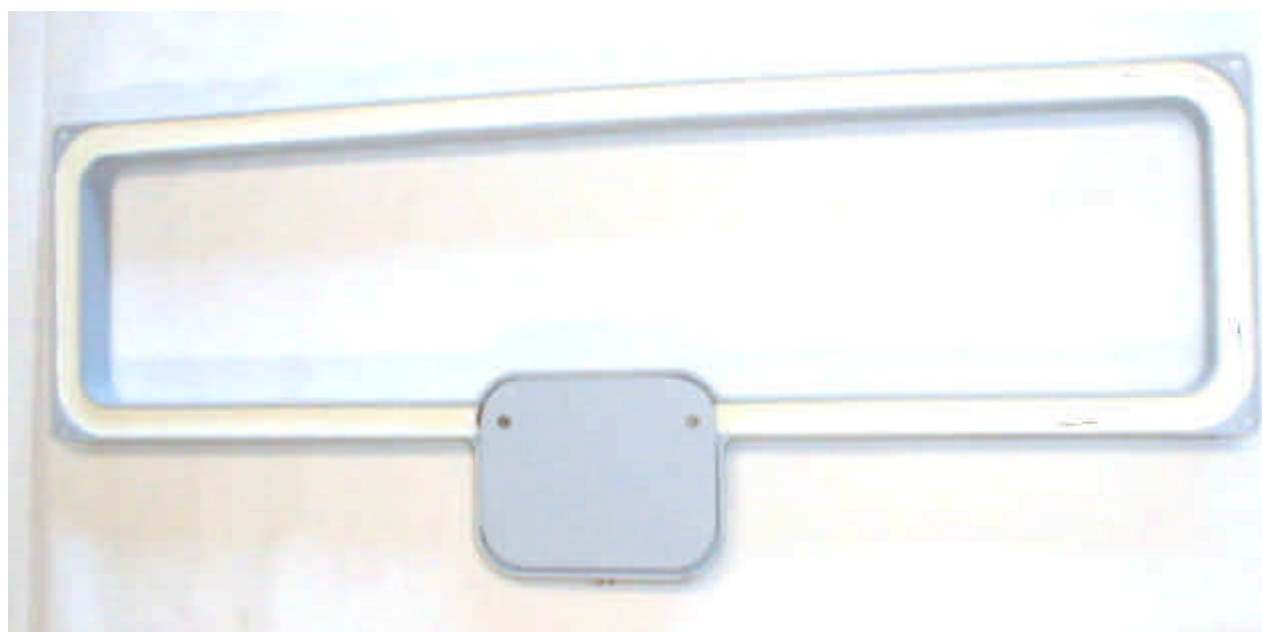


Detail View of 140x140 antenna without fences

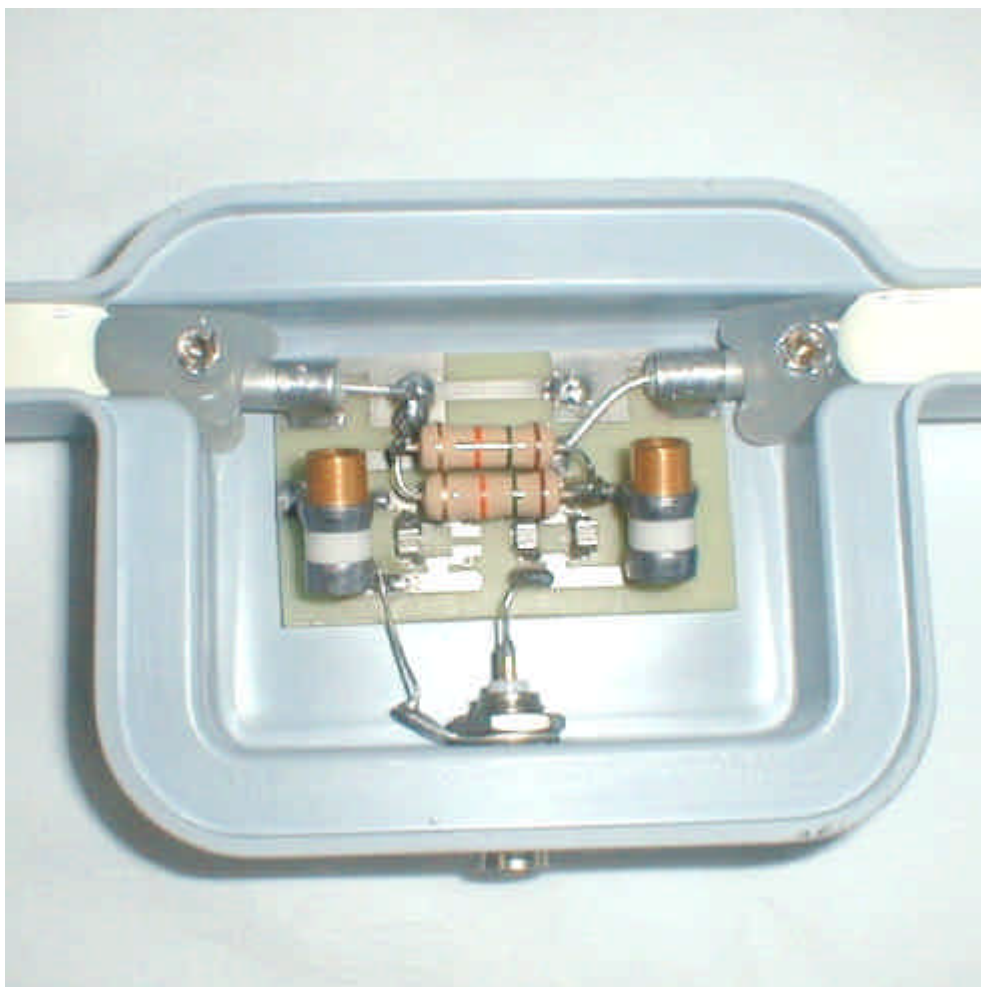
## 1.4 470x120 Antenna



**View of 470x120 antenna (front face)**



**View of 470x120 antenna (rear face)**

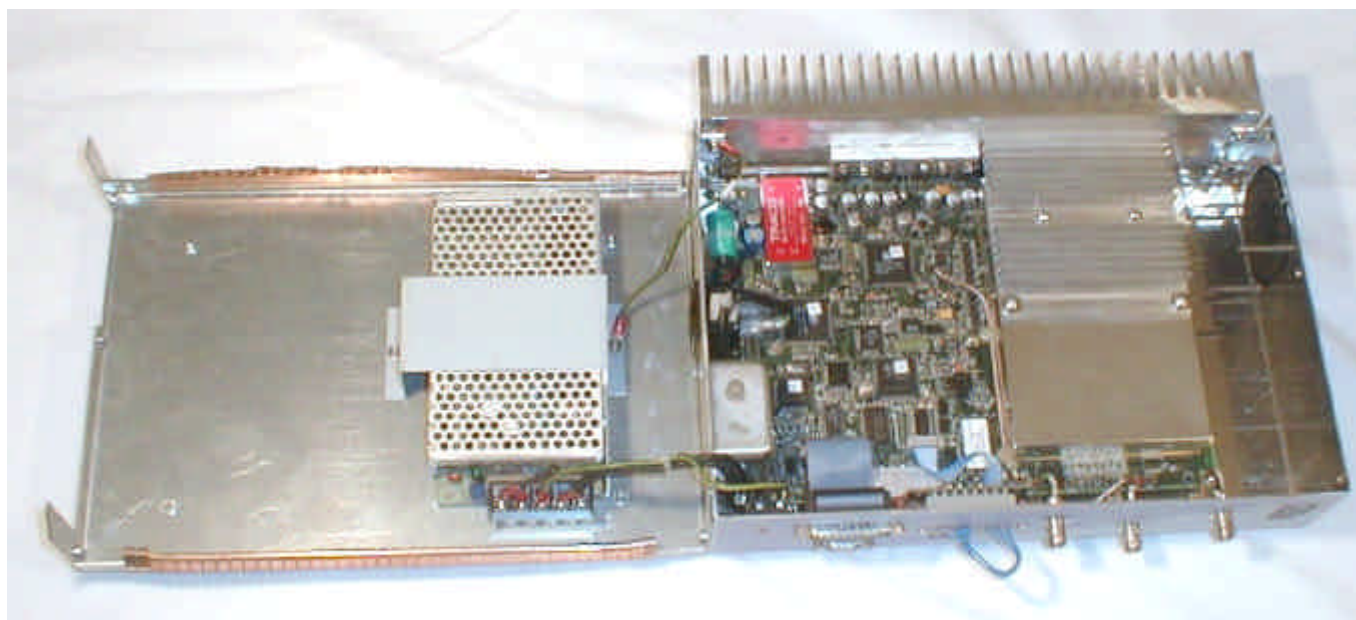


**Detail view, antenna without fences**

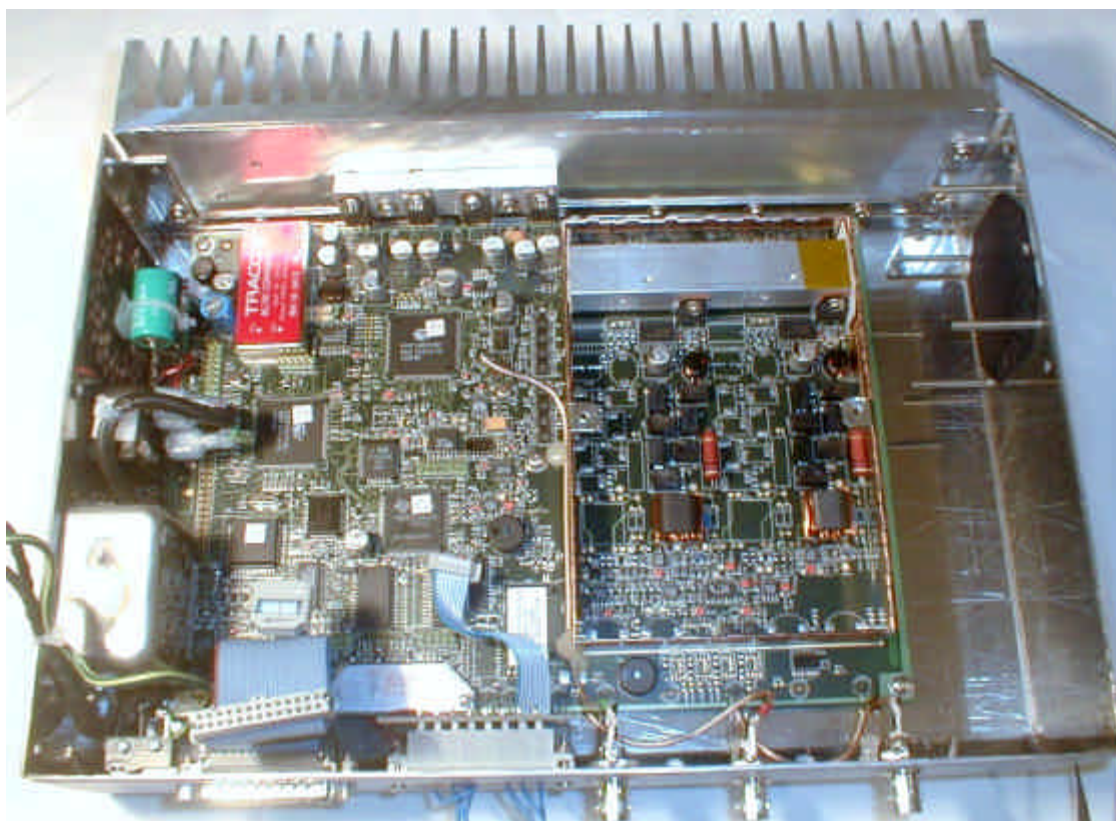


## 2 INTERNAL PHOTOS OF MEDIO L100

### 2.1 Internal photo of MEDIO L100

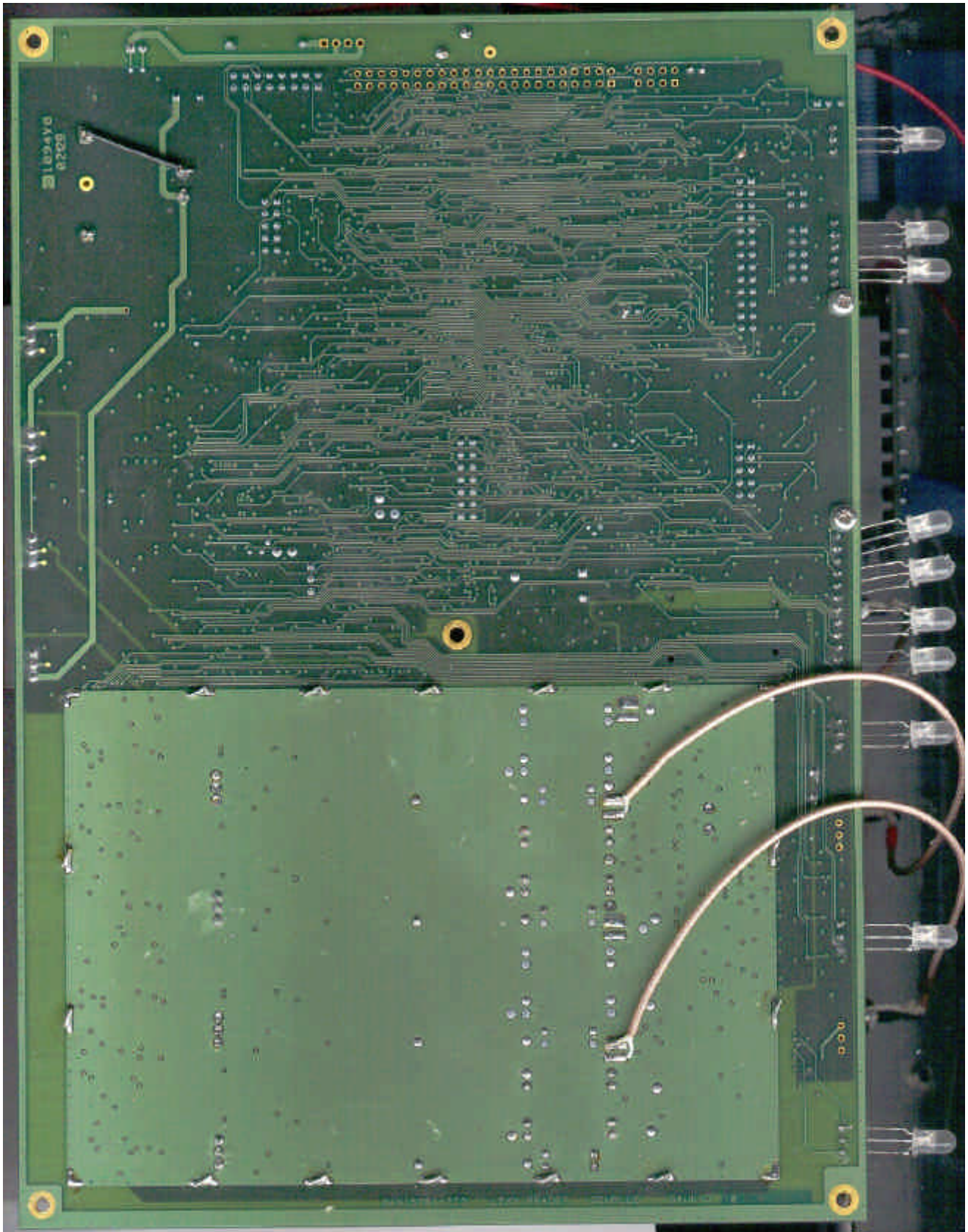


MEDIO L100 cover removed



MEDIO L100 inside, inside cover removed



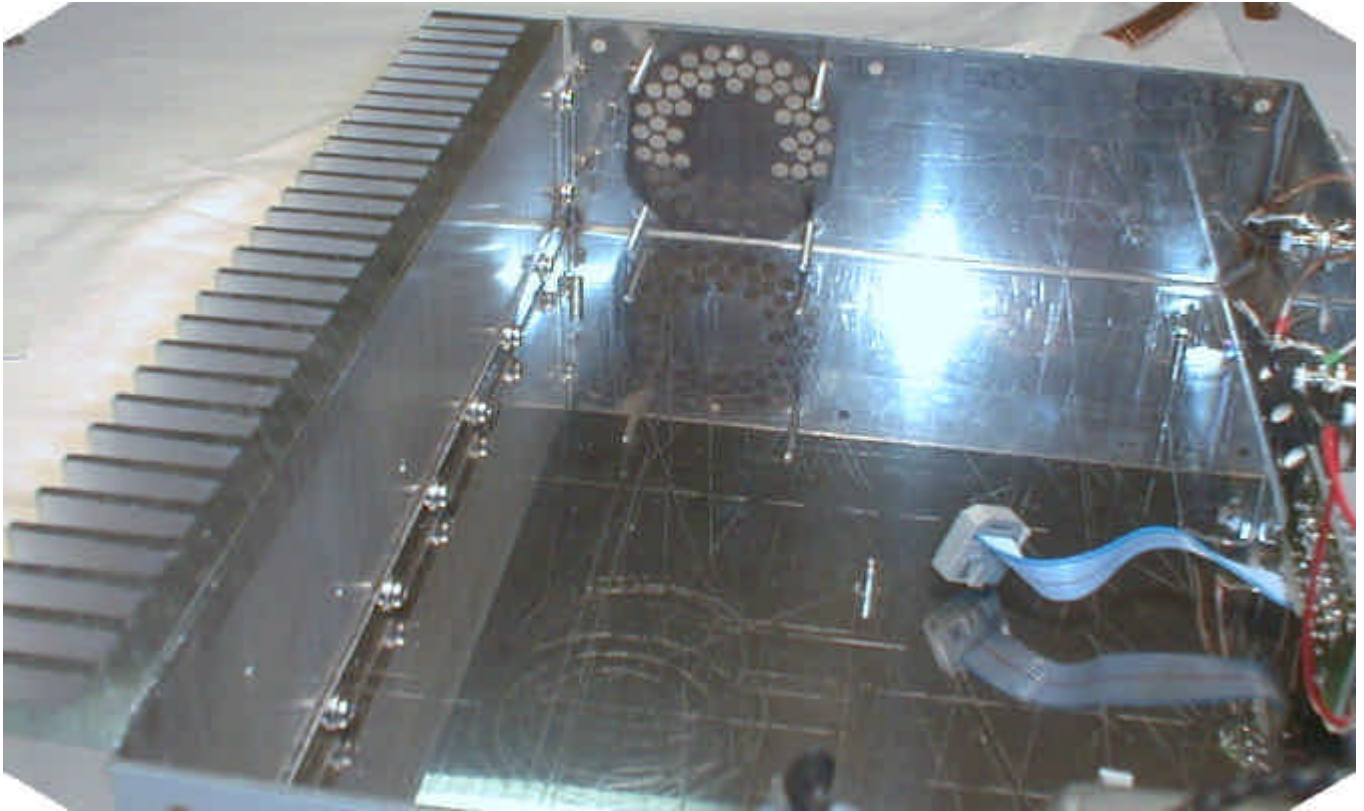


PCB of MEDIO L100, foil view

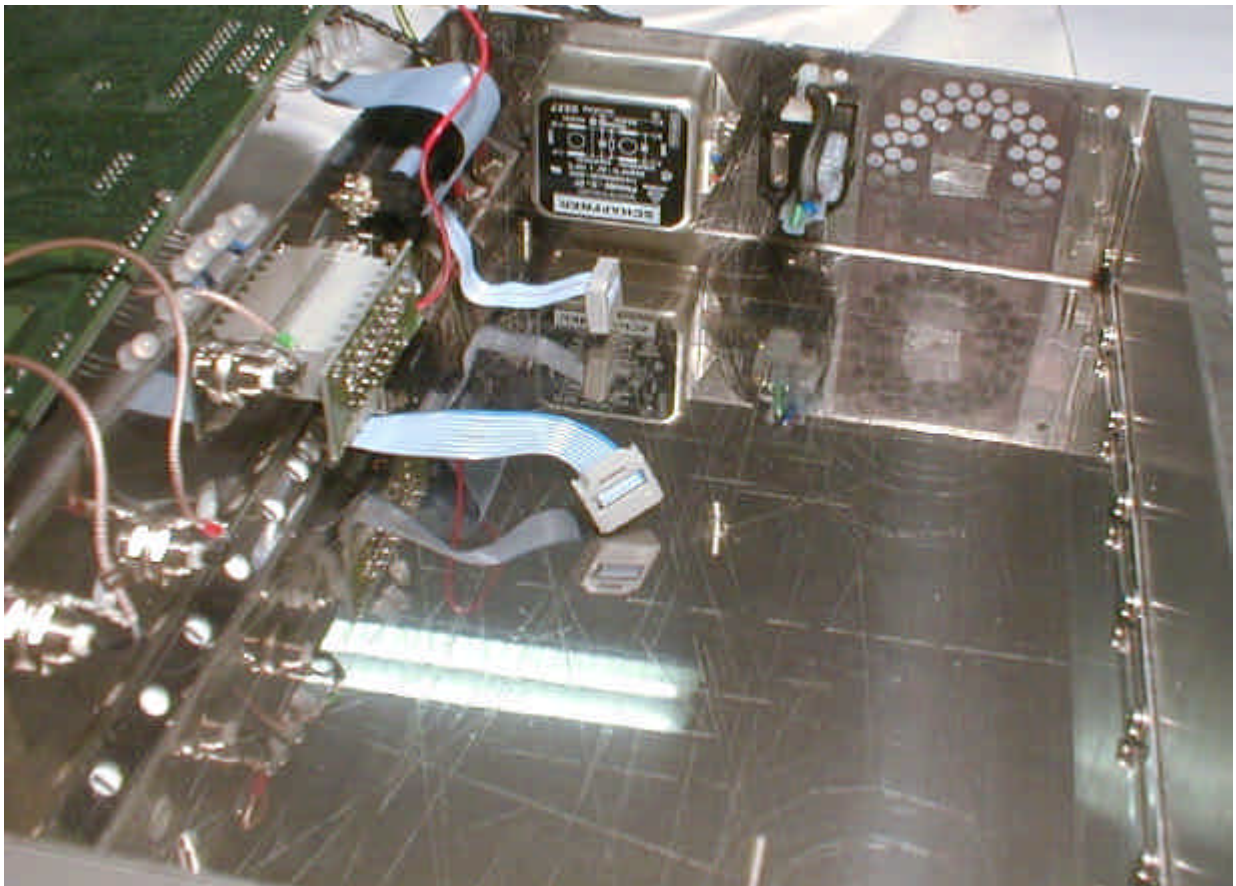


PCB of MEDIO L100, components side



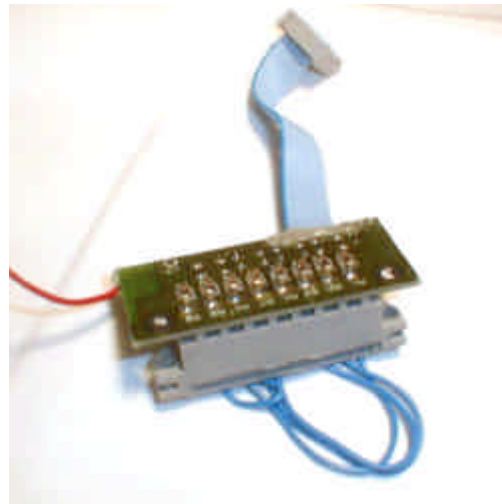
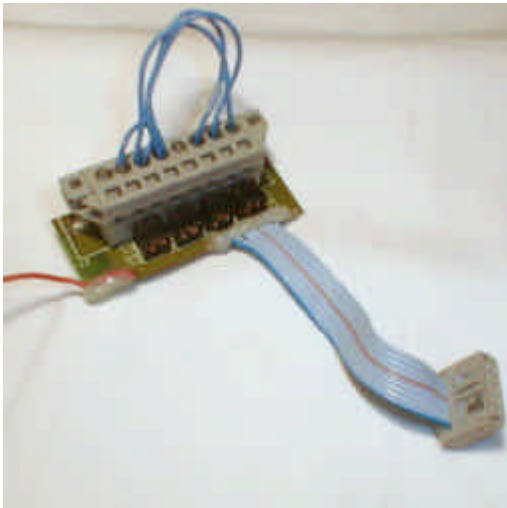


MEDIO L100, without board, Detail view, left face

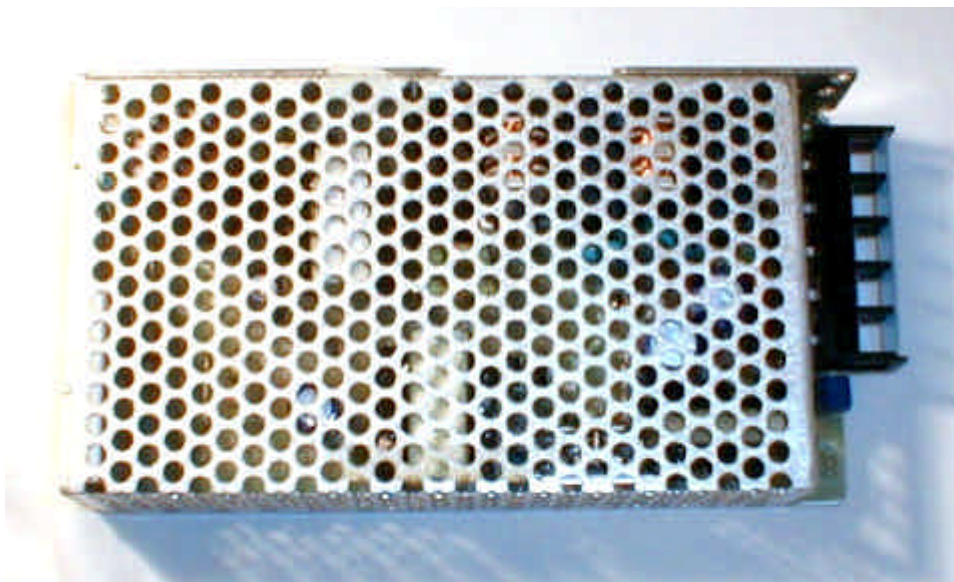


Detail view, right face

## 2.2 I/O board

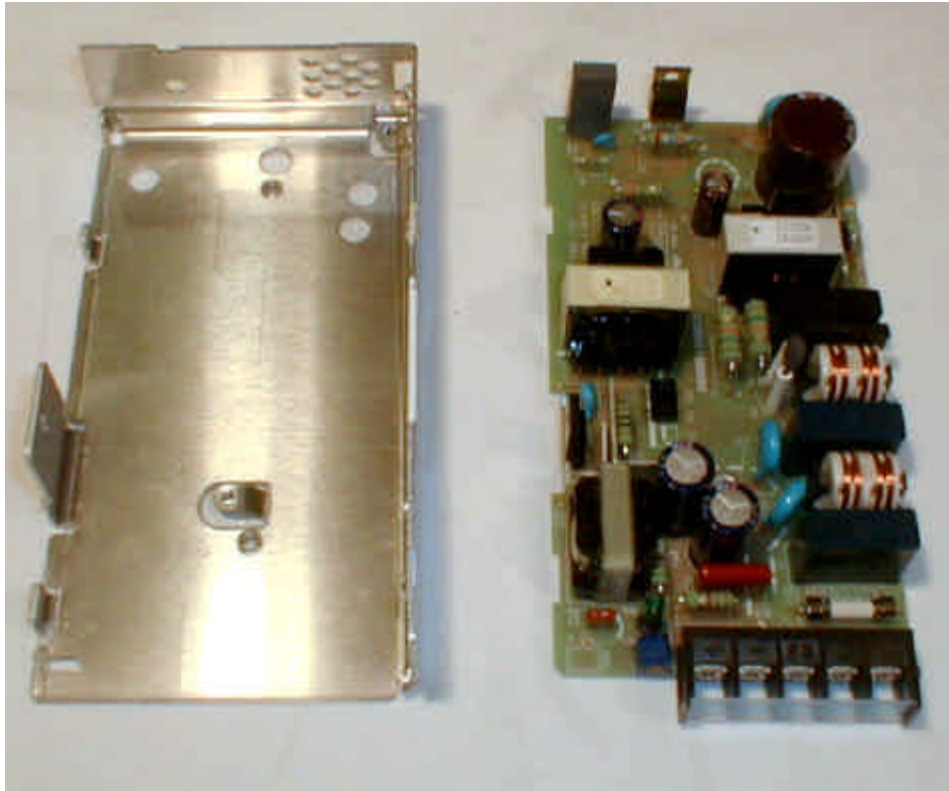


## 2.3 Power supply of MEDIO L100

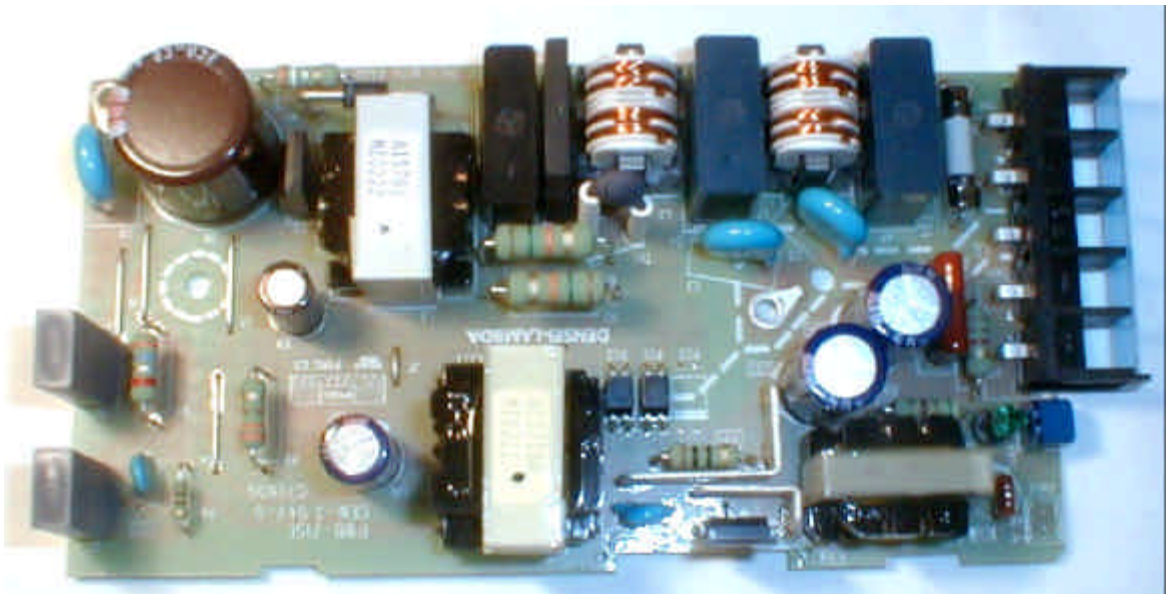


General view



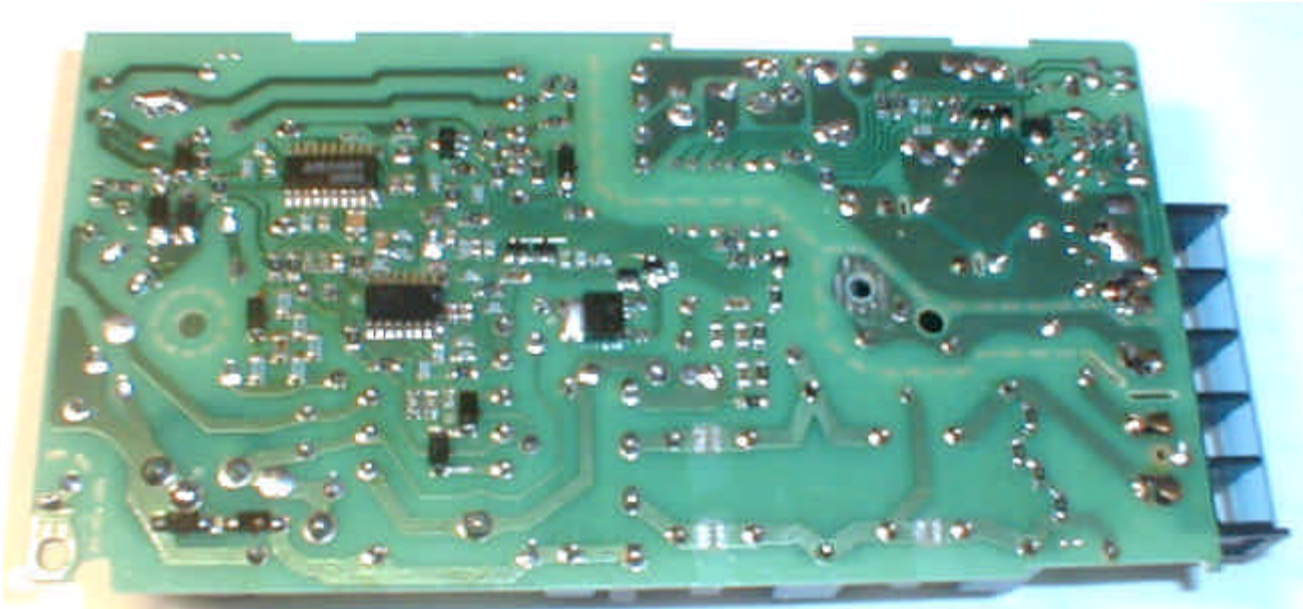


General view, without cover



Power supply, component side





Power supply, foil side