

FCC Grant Application Photographs

For the Itron CENTRON[®] SmartSynch-Enabled SmartMeter

FCC ID: QHC-CENGPRS1

IC ID: 4393B-CENGPRS1

11/28/2006

Prepared By:



**4400 Old Canton Rd.
Suite 300
Jackson, MS 39211**

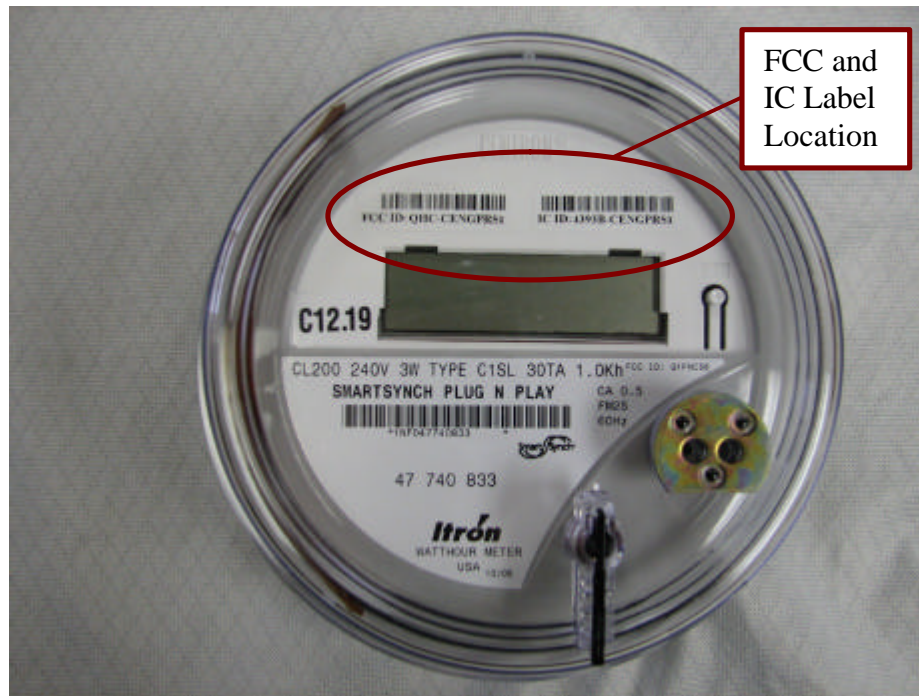


Figure 1: Itron CENTRON SmartSynch-Enabled SmartMeter



Figure 2: FCC and IC Label Examples – Located Above LCD Display



Figure 3: Flexible Dipole Antenna Location

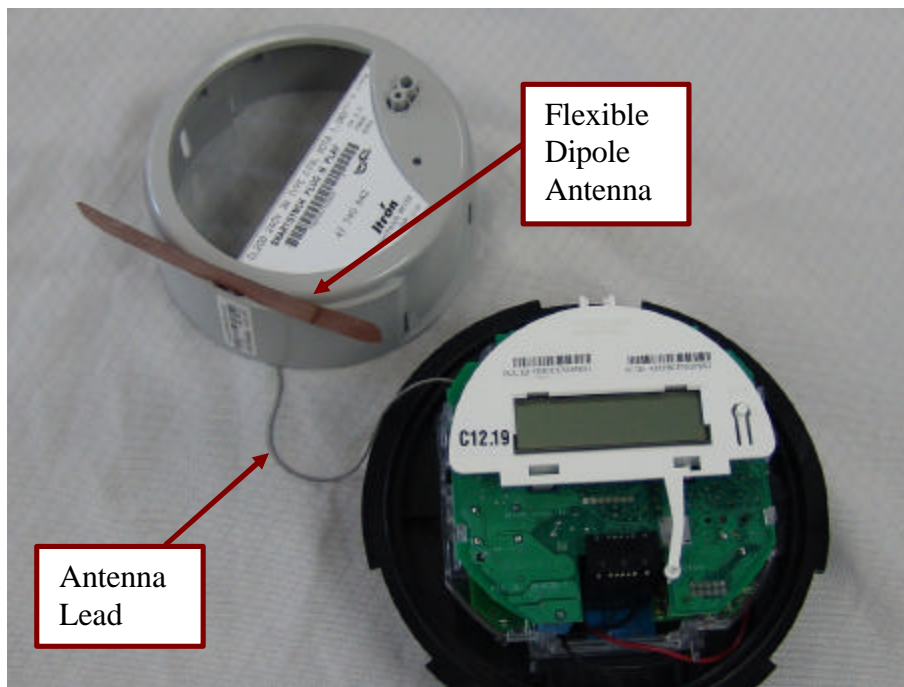


Figure 4: Outer Cover and Bezel Removed, Revealing Antenna Location and Internal Electronics



Figure 5: FCC Labeling Example

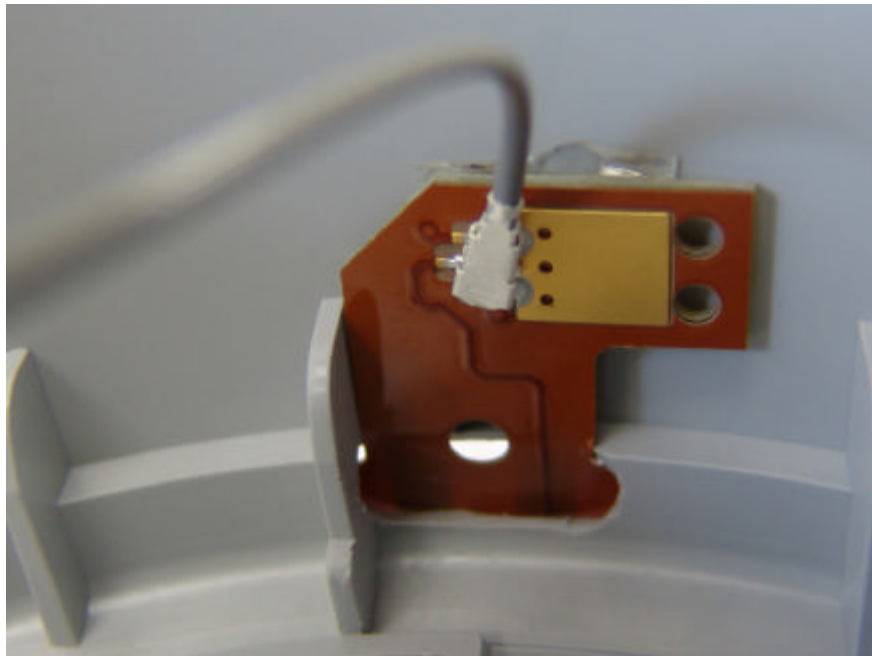


Figure 6: Inside View of Flexible Dipole Antenna Penetration through the Bezel, with Attached Antenna Lead



Figure 7: Itron Register and Display Board – Front View

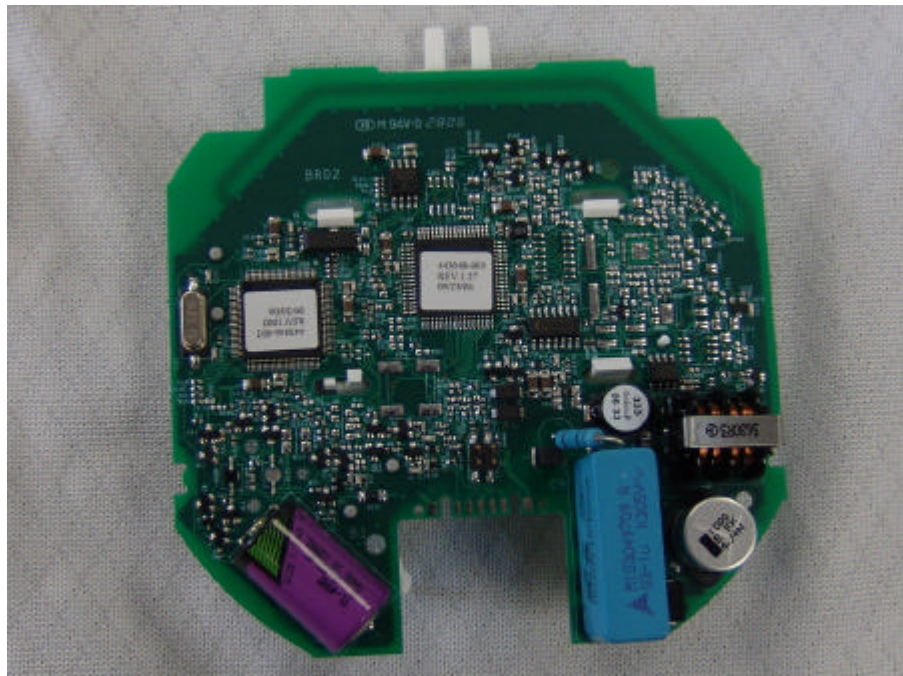


Figure 8: Itron Register and Display Board – Back View

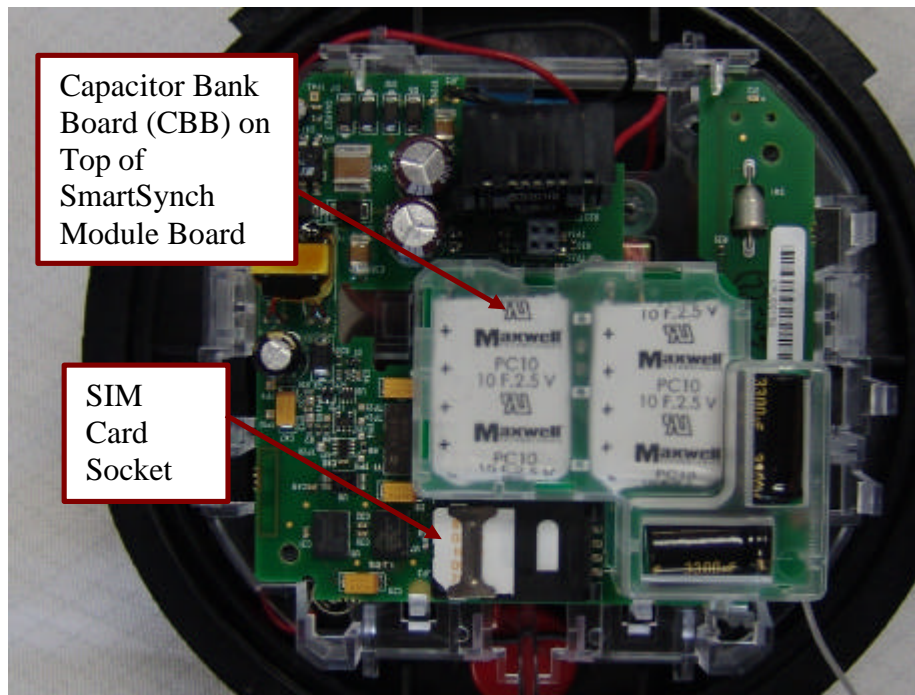


Figure 9: Itron Register and Display Board Removed, Revealing SmartSynch Module Board Underneath

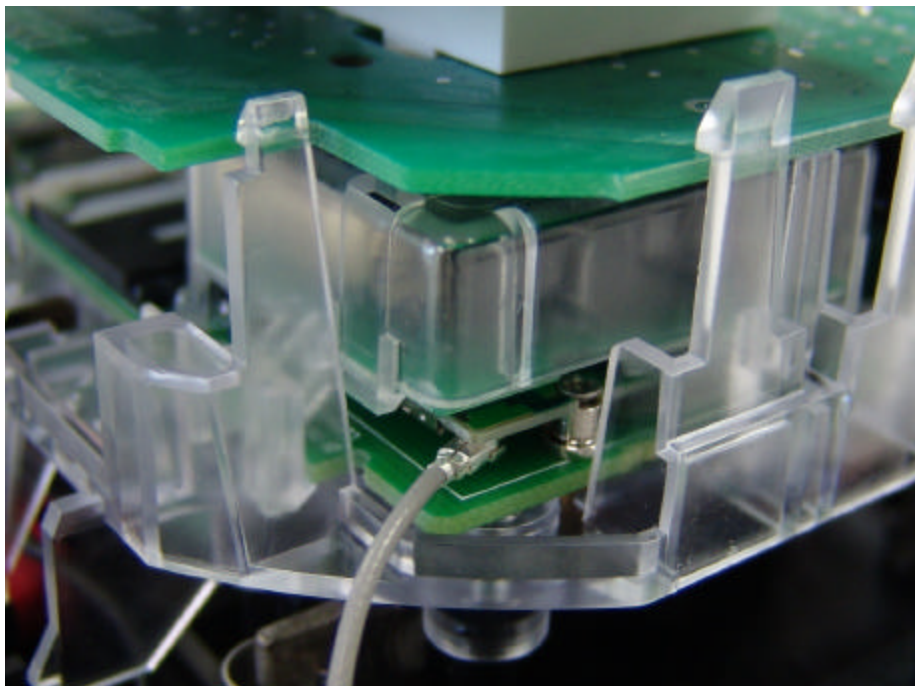


Figure 10: Antenna Lead Connection to Siemens MC-56 Modem on SmartSynch Module Board

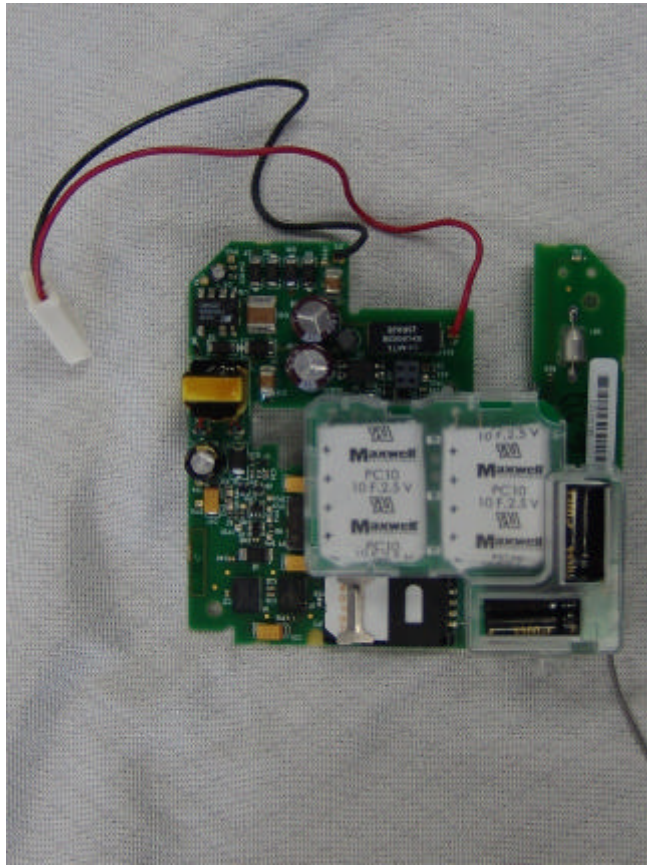


Figure 11: SmartSynch Module Board – Front View

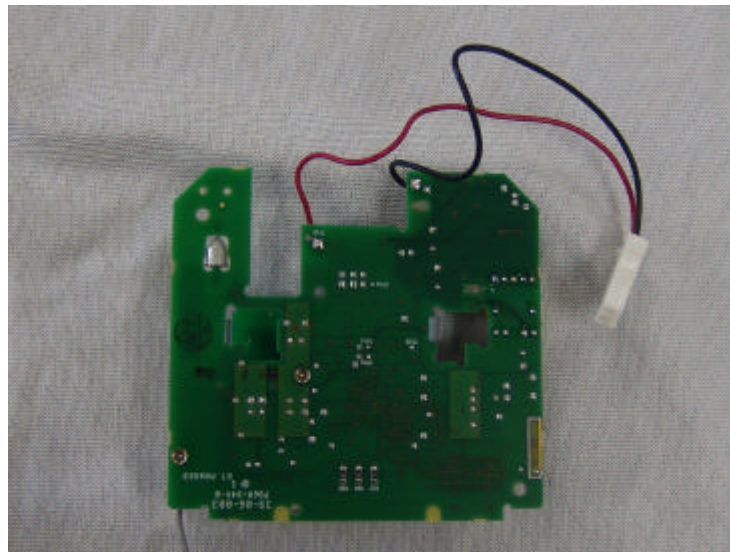


Figure 12: SmartSynch Module Board – Back View

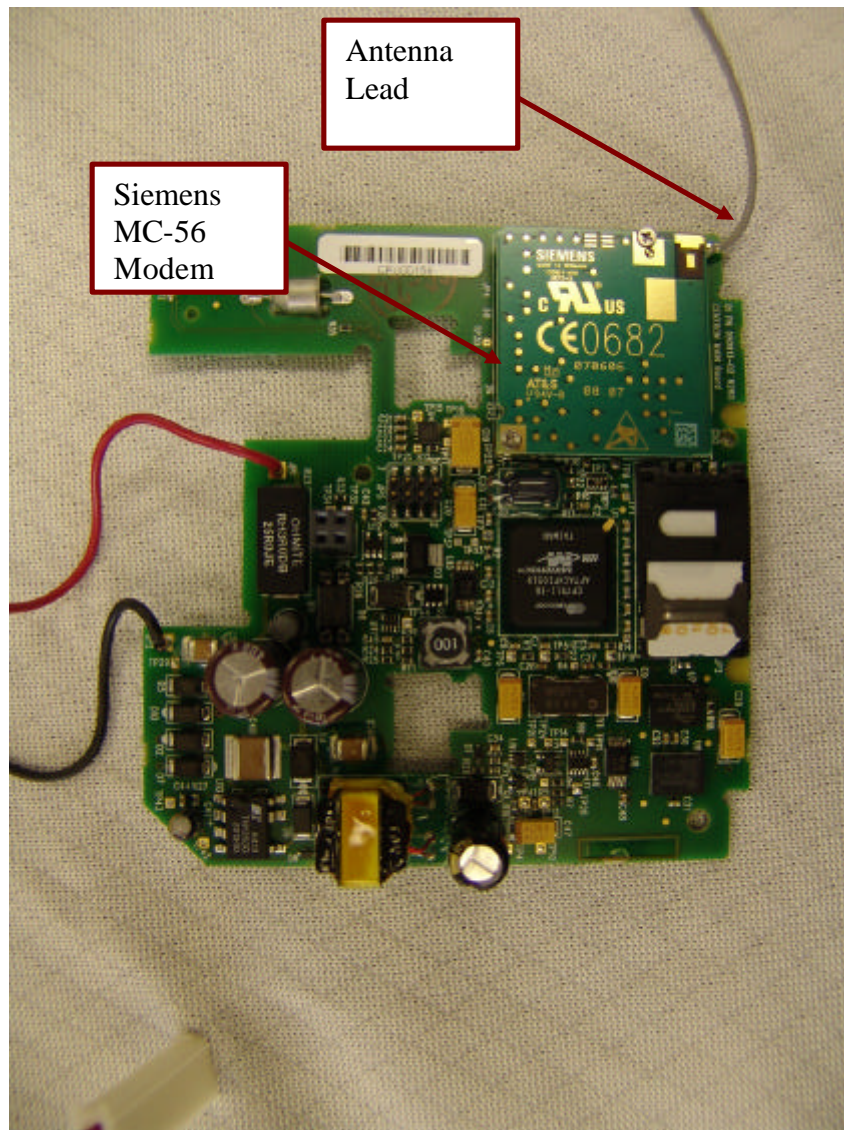


Figure 13: SmartSynch Module Board – Capacitor Bank Board (CBB) Removed, Revealing Siemens MC-56 Modem Underneath

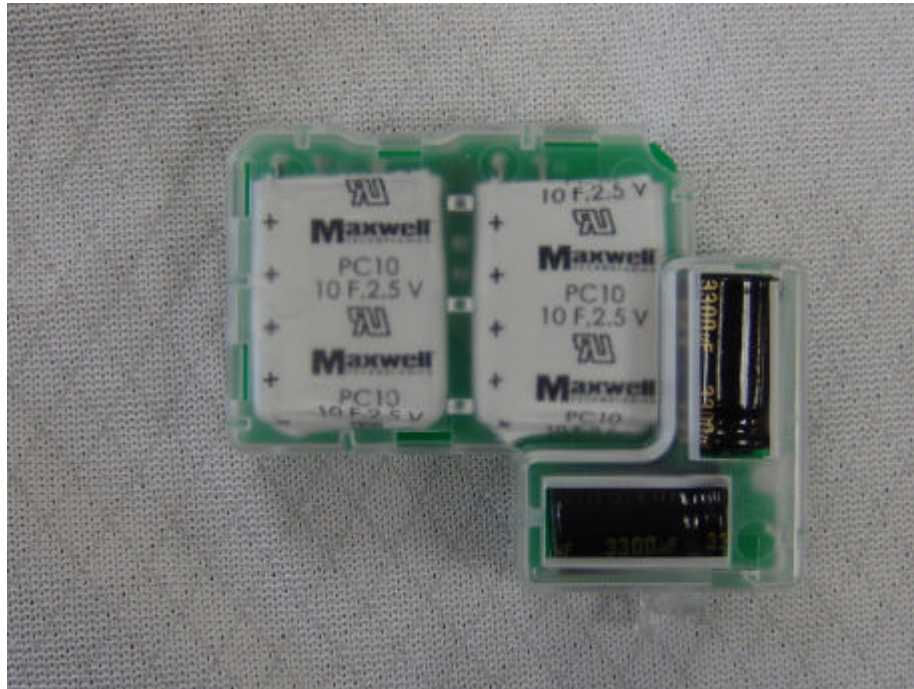


Figure 14: SmartSynch Capacitor Bank Board (CCB) – Front View

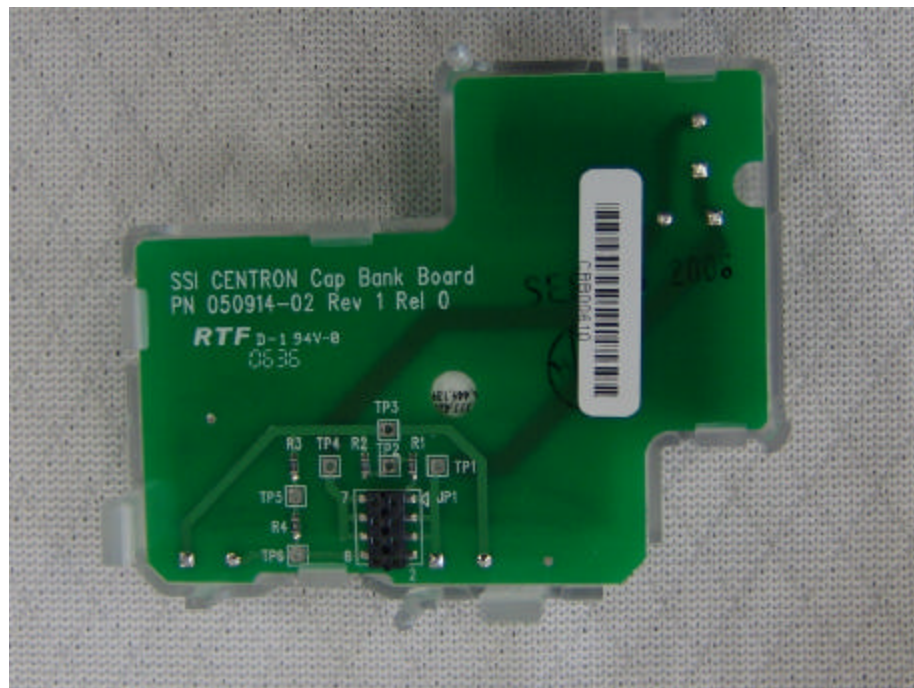


Figure 15: SmartSynch Capacitor Bank Board (CBB) – Back View

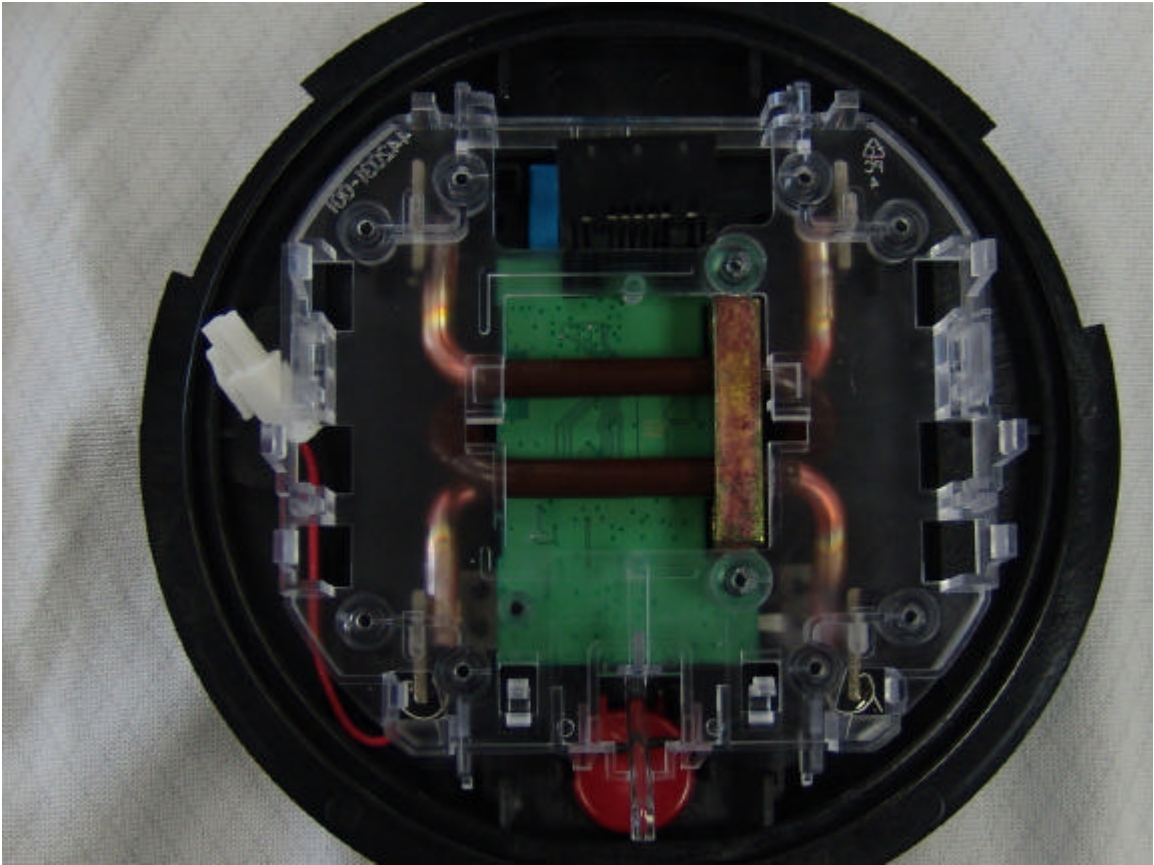


Figure 16: SmartSynch Module Board Removed, Revealing Itron Main Meter Board Underneath