

## ■ CONTENTS

SYSTEM RECOMMENDATION  
DESCRIPTIONS OF THE PRODUCT  
ACCESSORIES  
INSTALLING THE PROGRAM AND DRIVER  
UNINSTALLING THE PROGRAM AND DRIVER  
HOW TO USE THE PROGRAM  
HOW TO FORMAT THE DEVICE  
HOW TO UPDATE THE FIRMWARE  
INSERTING A BATTERY  
POWER ON / OFF  
CHANGING THE MODE (MP3 ↔ Voice)  
PLAY  
SKIP OR SEARCH  
REPEAT (A-B)  
USING THE OPTIONS MENU  
SETTING THE EQUALIZER (MP3 MODE)  
REPEAT (MP3 MODE)  
ADJUSTING THE CONTRAST  
AUTO-INTELLIGENT POWER-OFF (AI-OFF)  
RECORDING A VOICE MESSAGE  
PLAYING A VOICE MESSAGE  
DELETE A VOICE MESSAGE (From the device)  
DELETE A VOICE MESSAGE (From the PC)  
KEY-GUARD LOCK (Slide Switch)  
TROUBLESHOOTING  
SPECIFICATIONS  
WARRANTY

■ In order to improve the product; quality, design and/or specifications may change without notice.

The MUSIC BOX is a fun device filled with 3 main, powerful functions.

- 64MB / 128MB high quality MP3 Music Player.
- Digital Voice Recorder
- Removable Flash Hard Drive for (PC) data storage

## ■ SYSTEM RECOMMENDATION

- Processor : Pentium 233MHz or Better
- OS: Windows 98 / 98SE / ME / 2000 / XP(Home Edition)
- 1GB Hard Disc or Higher (4GB Recommended)
- 64MB RAM or Better
- USB Port
- Monitor Resolution : 1024 × 768 , 16Bit Color or Better
- CD-ROM Drive to Install Software

## ■ DESCRIPTIONS OF THE PRODUCT

### ■ ACCESSORIES

Please check to make sure all contents of the box were received.

- Installation CD      ■ USB Cable      ■ Battery (1.5V, AAA)
- Earphones            ■ Manual            ■ Neck Strap

### ■ INSTALLING THE PROGRAM AND DRIVER

#### CAUTION

Do not connect the player to your computer before completing the program installation. If the player is connected, unplug it from your computer.

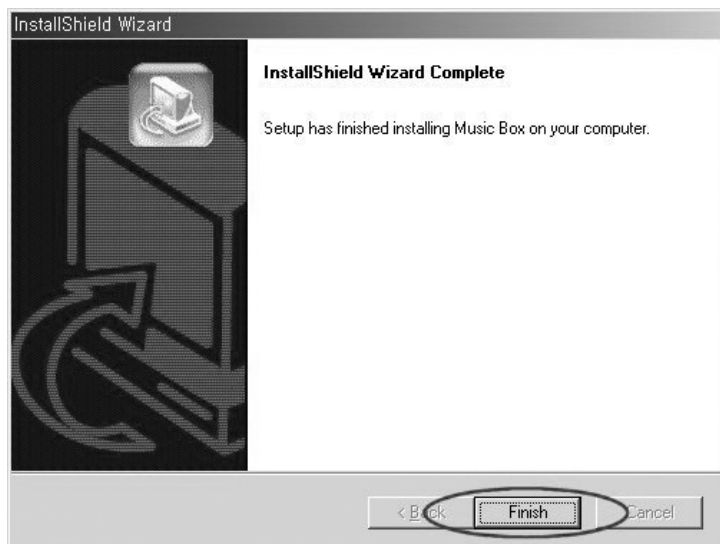
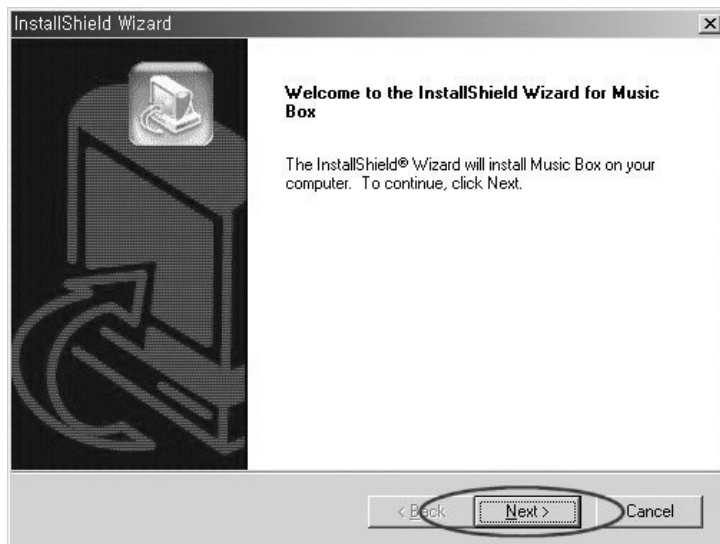
1. Insert the Installation CD into your CD-ROM drive. The installation will start automatically and the following screen appears. If the program does not auto-start, double-click the “INSTALL” icon from the CD.



2. In the installation menu, click the “INSTALL” button to start the installation. The installation will proceed as the figures shown below. Follow the Instructions displayed on the screen.



3. Click the “FINISH” button to reboot your PC. This will complete your installation process.



4. After rebooting PC, connect the player to the USB port of your PC and turn the power on by pressing the “▶/■” button.

5. When the power is on, the player will display “READY” on the LCD. “New Hardware Found” window will immediately appear as shown below.

(This window may slightly vary from the different Windows versions.)



6. During your installation of “New Hardware Found”, Windows 2000 and Windows XP will display the following message:

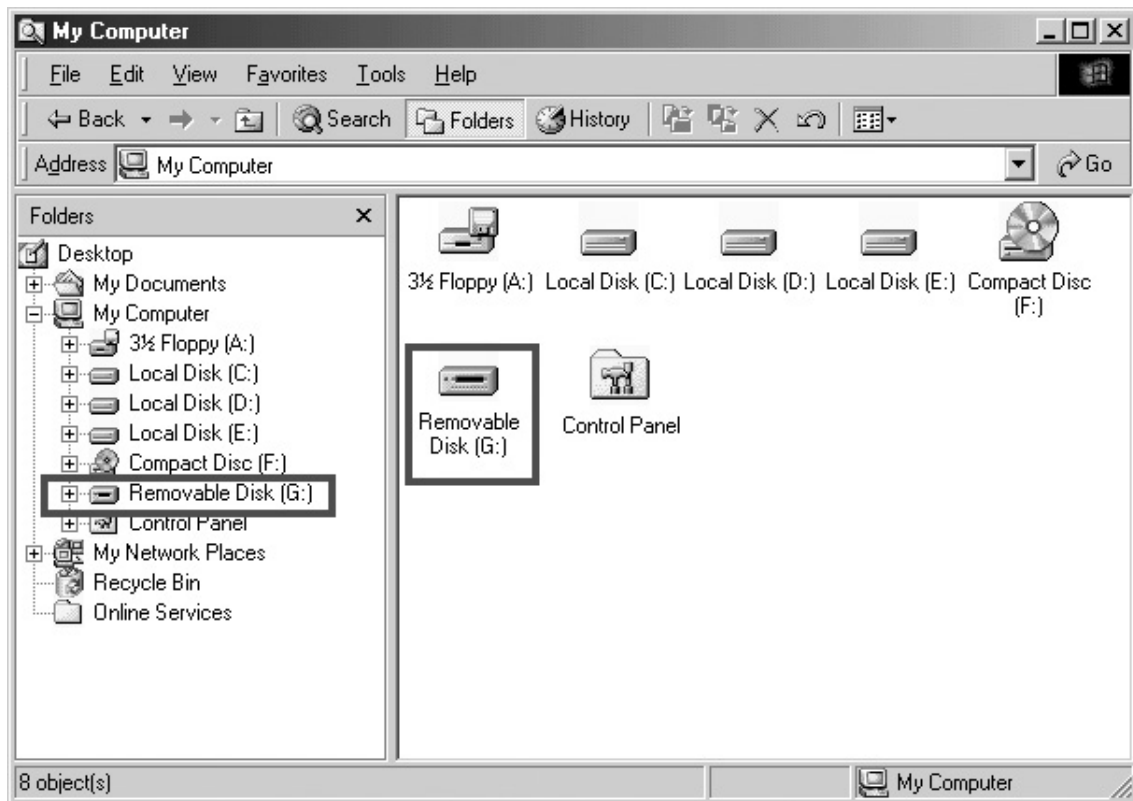


Click “Yes” or “Continue Anyways” button to continue with your installation

If you click “STOP Installation”, your installation will not be complete and the computer will not recognize the Music Box Player.

7. If the above steps have been completed, the player has been installed properly. Now, run Windows Explorer or My Computer and there should be a new Removable Disk on your system. The drive letter will vary upon the number of different drive already present on your system.

This drive can be used like any other removable hard drive. Drag-and-drop and store any types of PC files (up to the memory capacity).

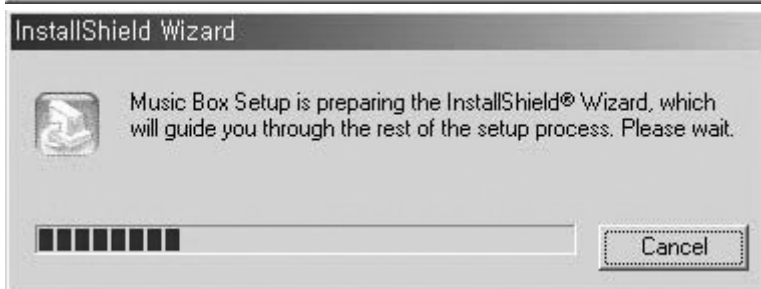
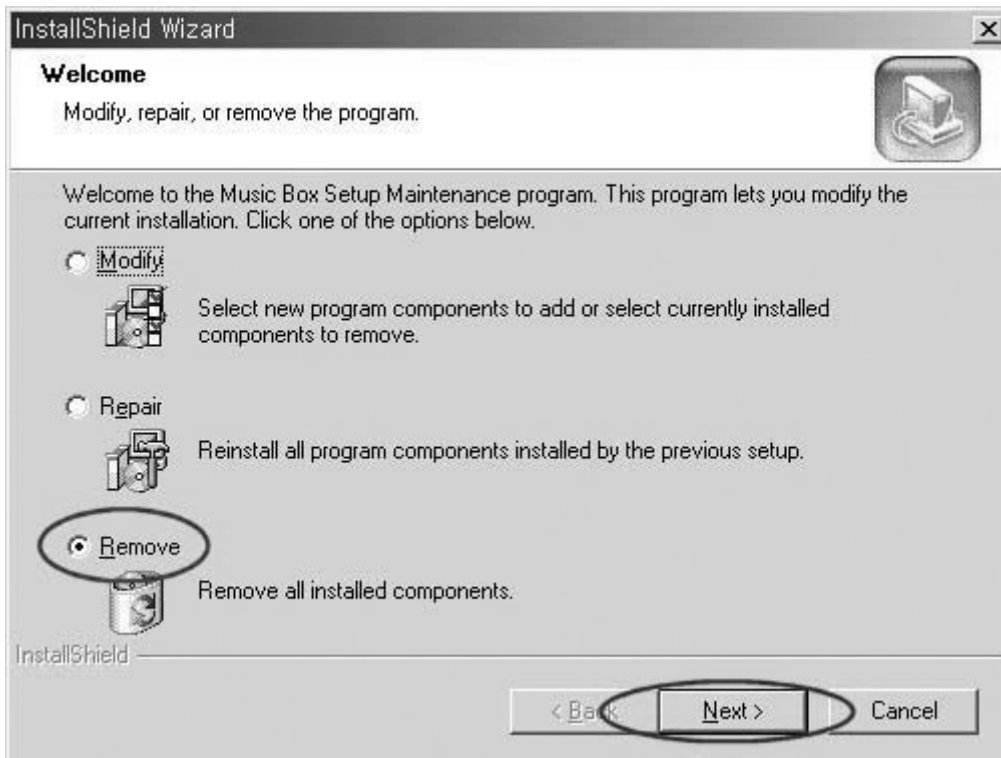


#### NOTE

No shortcut icon will be created on Windows desktop after installing the CD. The installation CD installs two programs on your PC: Music Box Format and Music Box Update. These icons are found in Start Menu > (All) Programs > Music Box MP3 Player.

#### ■ UNINSTALLING THE PROGRAM AND DRIVER

1. If the player is connected to PC, unplug it from your computer before starting.
2. Run Add/Remove Programs from the Control Panel to display the list of installed programs.
3. Locate “MUSIC BOX” in the list and double-click it to completely remove the programs and drivers.
4. Click the “REMOVE” check-box and click “NEXT”.



5. Finally, click “FINISH” to complete the uninstallation process.





## NOTE

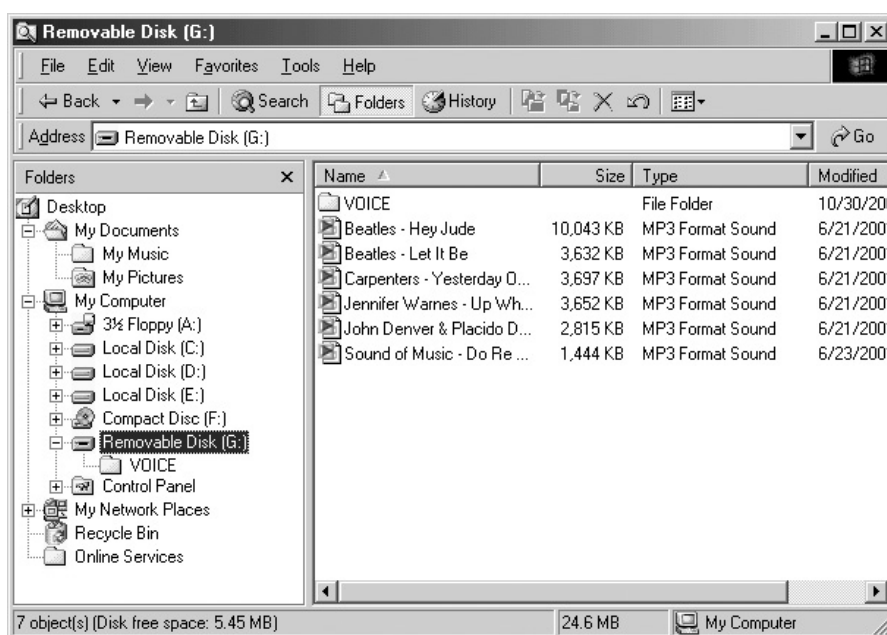
If you want to reinstall the programs, please restart your PC before starting a new installation process.

If the player program has not installed properly or if you need to reinstall it, it is recommended to first uninstall the program as shown in the above steps.

## ■ HOW TO USE THE PROGRAM

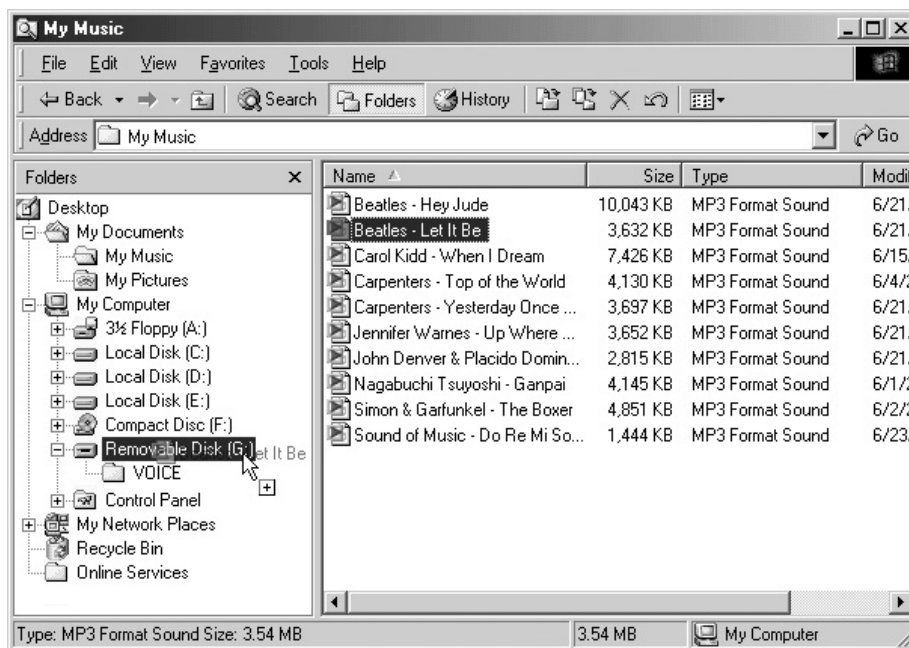
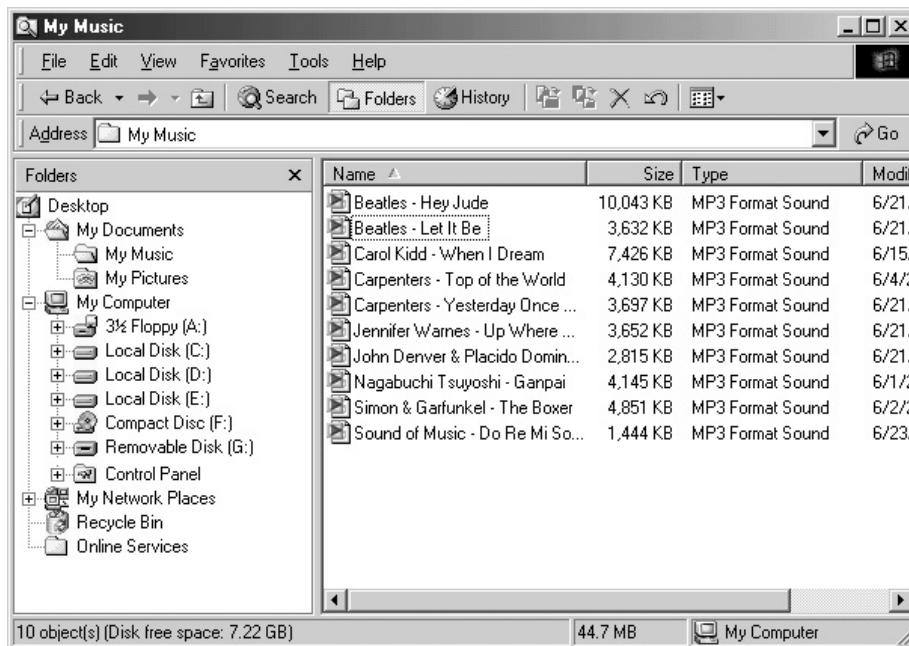
### ■ To download MP3 or data files to the player using Windows Explorer

1. After installing the drivers, connect the player to the PC with the supplied USB cable.
2. Open Windows Explorer and make sure the Music Box “Removable Disk” is present.





3. Locate the file(s) you wish to copy to the Music Box. Highlight the files and Drag-and-drop the files to the Removable Disk. MP3 music track numbers will be respective to the order in which it is copied to the Music Box.

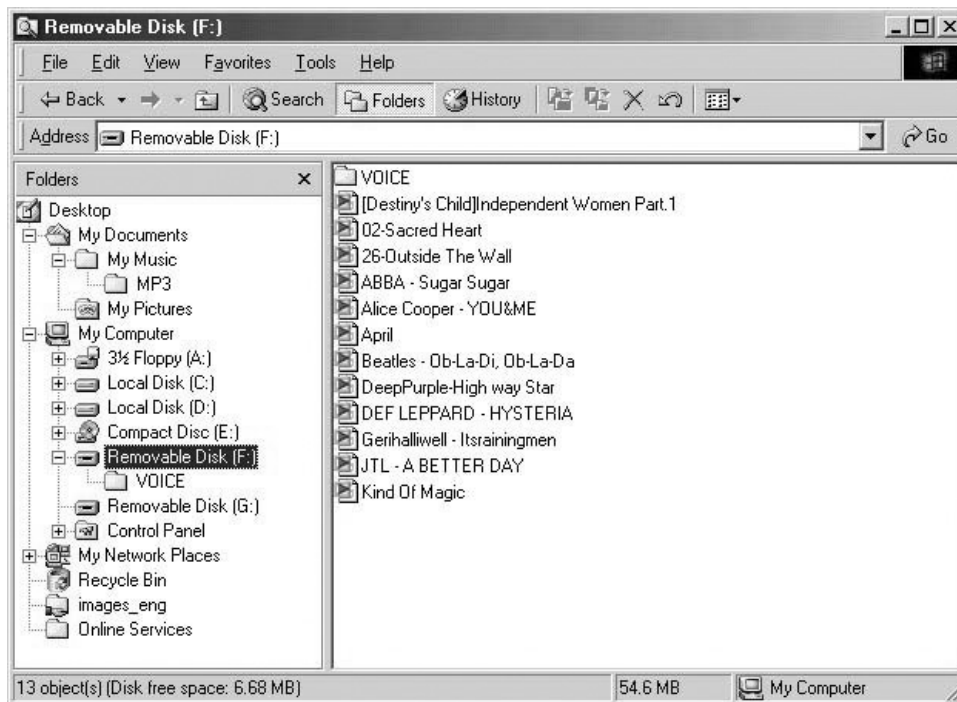


4. While MP3 files are downloading to the player, “WRITING” will be blinking on the LCD of the player.

#### NOTE

If the USB cable is unplugged during “WRITING” mode, all memory will be lost. In this case, Format the drive then Update the firmware. Firmware must always be updated after Formatting the drive. **If the firmware is not updated after format, the drive will not power on.**

5. After the download process is complete, verify there are (MP3) files in the Removable Disk.



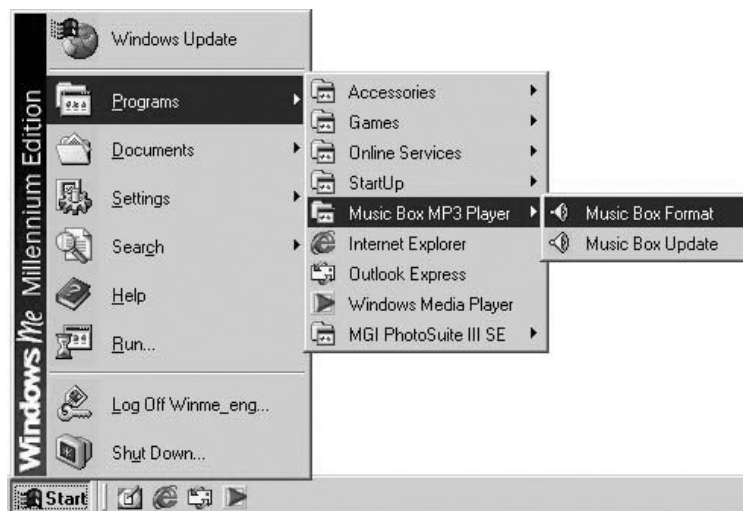
6. The player will automatically power on when the USB cable is removed. Press the “▶/■” button to play to the songs.

#### ■ HOW TO FORMAT THE DEVICE

You can format the Music Box like a Removable Disk. If you format the device, all the saved files will be deleted – MP3, data, voice, etc.

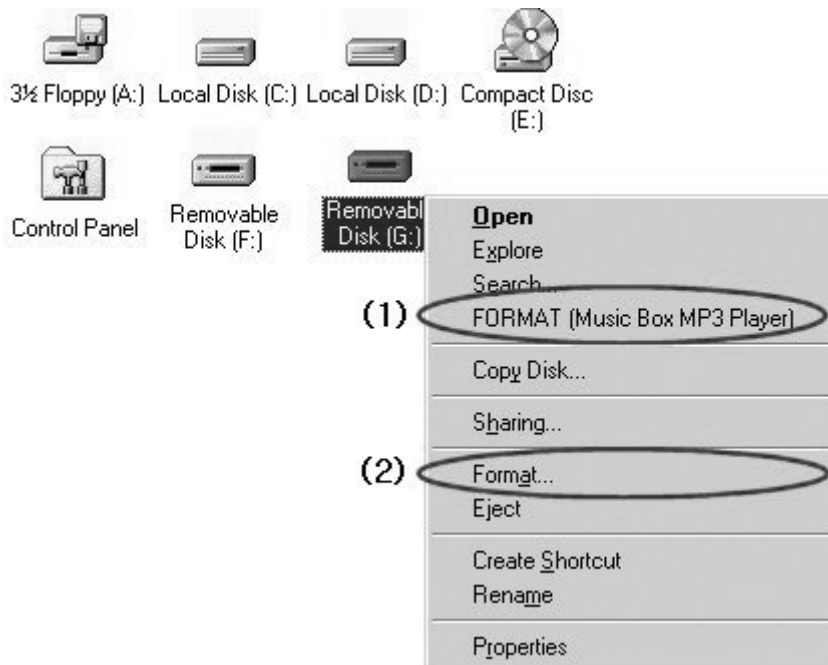
■ To run Format with MUSIC BOX FORMAT program (Windows Start Menu):

A. Click Start Menu > (All) Programs > Music Box MP3 Player > Music Box Format.

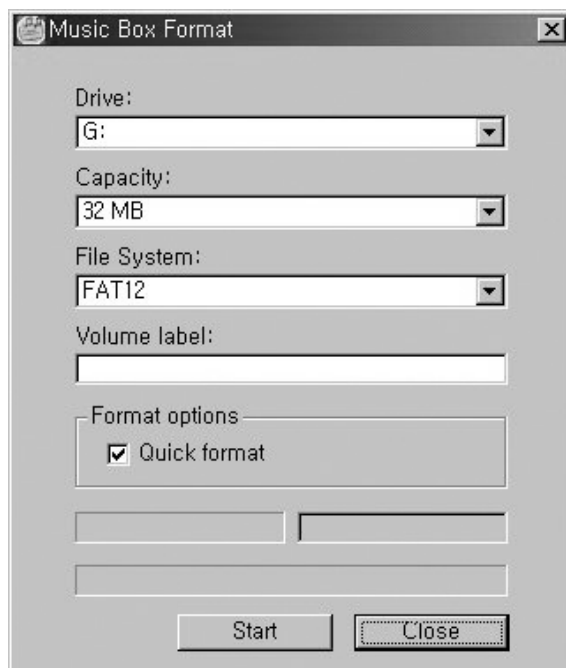


■ To Format through Windows Explorer:

- A. Open windows Explorer and select the Removable Disk you want to format.
- B. Right-click the mouse on the Removable Disk to display the call-up menu.
- C. Click either “Format...” or “FORMAT (Music Box MP3 Player)” from the call-up menu. (The call-up menu will vary with the different Windows versions.)



1. Select the Drive you wish to format by selecting from the “Drive” drop-down menu.
2. “Capacity” and “File System” cannot be changed.
3. Enter a “Volume Label” (optional – can be blank).
4. Select “Quick Format” to remove all files and firmware. Deselect “Quick Format” to completely refresh the memory.



## NOTE

Quick format process is much shorter and faster than normal format. Normal format is recommended if an error occurs during a writing process.

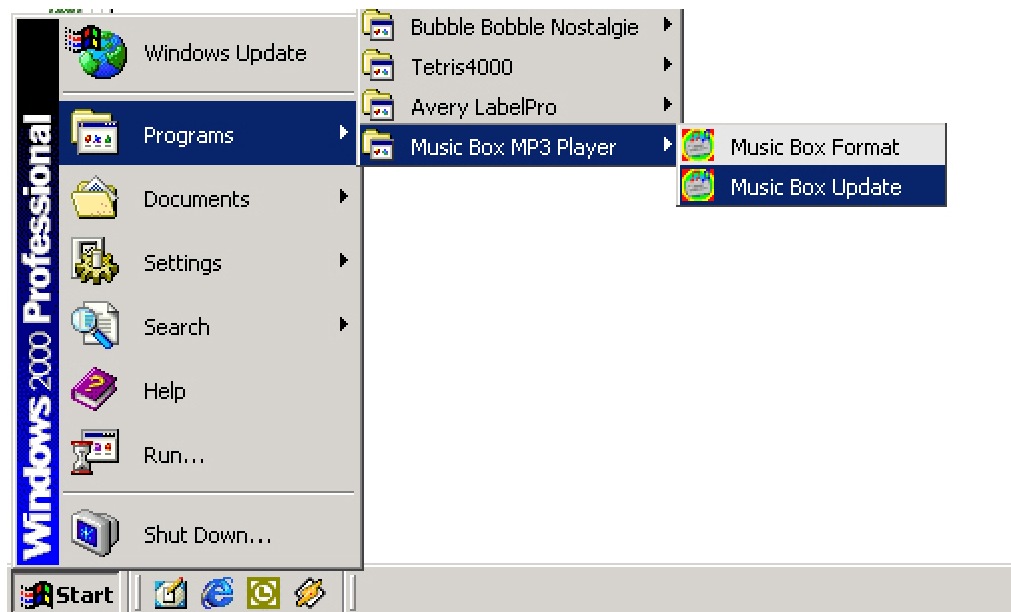
If no removable disk drive is listed in the “Drive” box, remove the battery from the player to reset then retry formatting again.

**CAUTION** Firmware must always be updated after formatting the drive. **If the firmware is not updated after format, the drive will not power on.**

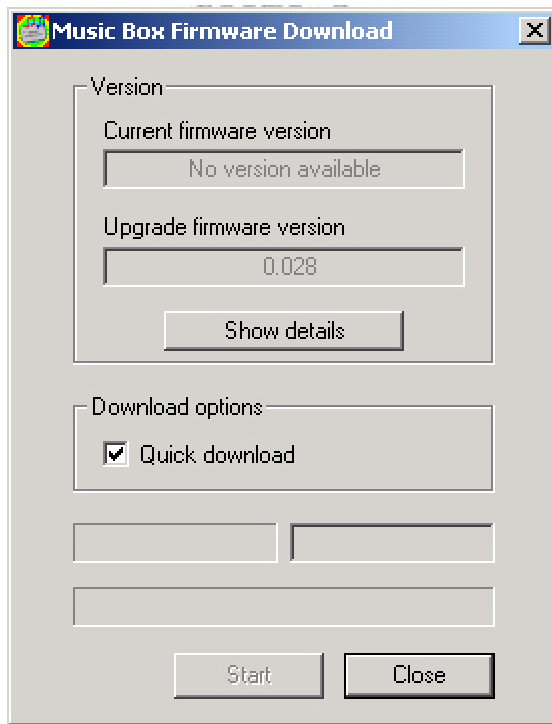
## ■ HOW TO UPDATE THE FIRMWARE

You must update the firmware after every time the Music Box memory is formatted. The firmware is updated so the Music Box can always stay up-to-date with new versions of operating software that come available in the market.

1. Click Start Menu > (All) Programs > Music Box MP3 Player > Music Box Update



2. In the “Music Box Firmware Download” window, verify that the “Upgrade Firmware Version” is 0.028 or later.
3. Click Start to initiate download.



#### ■ INSERTING A BATTERY

1. Open the cover on the back of the player.
2. Insert 1 x AAA battery matching the polarities inscribed in the battery compartment.
3. Close the cover securely on the unit. The device will not power on if the battery cover is not properly placed.

#### ■ POWER ON / OFF

1. In the off position, press the “▶/■” button to turn the player on.
2. In the on position, press the “▶/■” button for 3 seconds to turn the player off.

#### ■ CHANGING MODES (MP3 ↔ Voice )

1. In the STOP position, press the “M” button to change from MP3 Player Mode to Voice Recording Mode. When in Voice Recording mode, “Voice” will be displayed on the LCD.
2. Press ‘M’ button again to change from Voice Recording Mode to MP3 Player Mode. When in MP3 Mode a music note will be displayed on the LCD.

#### ■ PLAY

1. Press the “▶/■” button to play a song. Press it once again to stop.
2. Press “+” or “-” button to change the volume level up or down. There are 27 volume levels.

#### ■ SKIP OR SEARCH

1. Press “▶▶” or “◀◀” button to skip tracks. Skipping tracks can be done in Play or Stop position.
2. Press and Hold “▶▶” or “◀◀” button to fast forward or rewind while a song is playing. The song will not be heard while in search mode. The song will continue to play once “▶▶” or “◀◀” button is released.

#### ■ REPEAT A-B

You can select the section you wish to repeat with this function. It's great for language studying students. It allows you repeat a desired portion of a voice recording or music without repeating the whole file.

1. Press the “M” button to mark the beginning of the repeat section while a song or voice message is playing.
2. Press the “M” button again to mark the ending position of the section you wish to repeat.
3. The player will only play the marked section.
4. To release the repeat, press the “M” button.

#### ■ USING THE OPTIONS MENU

##### ■ SETTING THE EQUALIZER (MP3 MODE)

1. Press the “M” button for 3 seconds to call the Options Menu.
2. The equalizer settings are represented with “EQ” on the LCD. Select “EQ” by pressing the “M” button.
3. Press the “▶▶” or “◀◀” button to select an equalizer setting (NORMAL → ROCK → POP → CLASSIC → JAZZ). Press the “M” button to confirm selection.
4. To Exit from the Options Menu, press the “▶▶” or “◀◀” button to highlight “Exit” and press the “M” button to confirm.

##### ■ REPEAT (MP3 MODE)

1. Press the “M” button for 3 seconds to call the Options Menu.
2. The repeat settings are represented with “RPT” on the LCD. Select “RPT” by pressing the “M” button.
3. Press the “▶▶” or “◀◀” button to select a repeat setting (NORMAL → RANDOM → RPT-1 → RPT-ALL). Press the “M” button to confirm selection.
  - A. RANDOM: Tracks will be played in random order
  - B. RPT-1: The current track will be repeated without skipping to the next track.
  - C. RPT-ALL: All tracks in the player will be repeated continuously.

##### ■ ADJUSTING THE CONTRAST

1. Press the “M” button for 3 seconds to call the Options Menu.

2. Highlight “CONTRAST” using the “▶▶” or “◀◀” button. Press the “M” button to confirm selection.
3. Adjust the contrast level by pressing the “▶▶” or “◀◀” button.
4. Press the “M” button to confirm selection.

#### ■ AUTO-INTELLIGENCE POWER-OFF (AI-OFF)

“Auto-intelligence Power-off” is designed to automatically shut down the player if the device is not in use for an extend period of time. The user can manually set the timer to shut down in 1 min, 2 min, or 5 min.

1. Press the “M” button for 3 seconds to call the Options Menu.
2. Highlight “AI-OFF” using the “▶▶” or “◀◀” button. Press the “M” button to confirm selection.
3. Press the “▶▶” or “◀◀” button to select the desired time (1min → 2min → 5min).
4. Press the “M” button to confirm selection. AI-OFF is activated only in the Stop position.

#### ■ RECORDING A VOICE MESSAGE

The Digital Voice Recording function is a helpful option integrated in the Music Box. It can be used to record any audio within a 7-feet radius of the device. You can store up to 99 individual messages. The recorded WAV file can then be archived on the PC or shared as an email attachment.

1. Select “Voice” mode. See “CHANGING MODES (MP3 ↔ Voice )”
2. In Voice Mode, press the “M” button for 3 seconds to call the Recording Menu.
3. Highlight “REC” and press the “M” button to start recording.
4. Press the “▶/■” button to stop recording.

#### NOTE

Voice Recordings are stored in WAV format. The files are stored in the “Voice” folder in the Removable Disk.

#### ■ PLAYING A VOICE MESSAGE

1. In Voice Mode, press the “▶/■” button to start playing the message. Press it once again to stop.
2. Press “+” or “-” button to change the volume level up or down. There are 27 volume levels.

#### ■ DELETING A VOICE MESSAGE (From the device)

1. Select “MP3” mode. See “CHANGING MODES (MP3 ↔ Voice )”
2. In MP3 Mode, press the “M” button for 3 seconds to call the Options Menu.
3. Highlight “DEL” using the “▶▶” or “◀◀” button. Press the “M” button to

confirm selection.

4. Highlight “VOICE” using the “▶▶” or “◀◀” button. Press the “M” button to confirm selection.
5. Select the file you wish to delete using the “▶▶” or “◀◀” button. Voice files are represented as /VOICE/V001.WAV on the LCD. Press the “M” button to confirm selection.
6. Highlight “YES” and press the “M” button to delete the file.
7. After you have deleted the file(s), select “Exit” from all the menus by pressing the “M” button.

#### NOTE

You can also delete the recorded files on the device through the PC.

#### ■ DELETING A VOICE MESSAGE (From the PC)

1. Connect the player to the PC with the supplied USB cable and turn the device power on.
2. Open “My Computer” and double-click the “Removable Disk” icon.
3. Open the “Voice” folder and manually delete the file you wish to remove.

#### ■ KEY-GUARD LOCK (Slide Switch)

Key-Guard Lock switch is located on the top of the device. It’s designed to prevent the buttons from being pushed in a pocket or purse.

1. To activate the “Key-Guard Lock” slide the switch to the Left side. A small pad-lock icon (🔒) will appear on the LCD.
2. To deactivate the “Key-Guard Lock”, slide the switch to the Right side. The icon should have disappeared.

#### NOTE

The device will still power on even with the Key-guard lock, but no buttons will function with the Key-guard lock activated. Unless the Key-guard lock is deactivated, the device will power down shortly using AI-OFF.

#### ■ TROUBLESHOOTING

- Please check the followings first if the product does not work properly.

The device does not power on.

- Check the polarities of the battery.
- Check the battery level
- Make sure the battery compartment cover is securely closed.
- Format disk and Update the firmware



1. The downloaded files are corrupt.
2. The device reads “READY” when not connected to PC.

This problem occurs due to the incorrect formatting.

- Remove the battery from the player and reinsert it to reset the device.
- Format disk and Update the firmware

The buttons of the Player does not work.

- Check to see if the Key-Guard Lock is activated.

I don't see the device on my PC as a Removable Disk.

- Uninstall and reinstall the installation CD
- “Update the driver” from the Device Manager in the Control Panel with the installation CD. Make sure you click “Continue Anyways” during installation. See #6 in “INSTALLING THE PROGRAM AND DRIVER”

No removable disk is listed in the “Drive” box in the Formatting window.

- Check the USB cable connection
- Check the battery level
- Make sure the device power is on
- Check if SCSI Host Controller is listed in the Device Manager. “Update the driver” from the Device Manager in the Control Panel with the installation CD. Make sure you click “Continue Anyways” during installation. See #6 in “INSTALLING THE PROGRAM AND DRIVER”
- Uninstall and reinstall the installation CD

■ SPECIFICATION

Main Function	MP3 Player / Voice Recorder / Removable Disk
Memory	256MB / 128MB / 64MB Flash Memory
Interface	USB
File Transmission Speed	2.7 Mbps
Display	FSTN LCD
Voice Recording Capacity	4 Hours (64MB Flash Memory)
	8 Hours (128MB Flash Memory)
Battery	AAA
Battery Life	6 Hours (Play / Record)
Output Power	4.5mW $\times$ 2 (16 $\Omega$ )
S/N (Noise Ratio)	90dB (with 20KHz LPF)
Case	Aluminum / Plastic
EMI	
Dimension (W $\times$ H $\times$ D)	
Net Weight (without Battery)	

■ WARRANTY REGISTRATION CARD

Thank you for your purchase. Please fill out the registration card to receive technical assistance and warranty services. This information that you provide will be kept confidential. Thank you.

MODEL NO			
WARRANTY PERIOD	1-Year Limited (Parts & Labor)		
PURCHASE DATE			
VALUED CUSTOMER INFORMATION			
NAME			
ADDRESS			
CITY		STATE	
ZIP CODE			
EMAIL			
PURCHASE INFORMATION			
PLACE OF PURCHASE			
ADDRESS			
CITY		STATE	
ZIP CODE			
PRICE OF PURCHASE			
NOTES			

## **FCC RF INTERFERENCE STATEMENT**

### **NOTE :**

This equipment has been tested and found to comply with the limits for a Class B digital device, pursuant to Part 15 of the FCC Rules. These limits are designed to provide reasonable protection against harmful interference in a residential installation.

This equipment generates, uses and can radiate radio frequency energy and, if not installed and used in accordance with the instructions, may cause harmful interference to radio communications. However, there is no guarantee that interference will not occur in a particular installation.

If this equipment does cause harmful interference to radio or television reception which can be determined by turning the equipment off and on, the user is encouraged to try to correct the interference by one or more of the following measures.

- Reorient or relocate the receiving antenna.
- Increase the separation between the equipment and receiver.
- Connect the equipment into an outlet on a circuit different from that to which the receiver is connected.
- Consult the dealer or an experienced radio, TV technical for help.
- Only shielded interface cable should be used.

Finally, any changes or modifications to the equipment by the user not expressly approved by the grantee or manufacturer could void the users authority to operate such equipment,