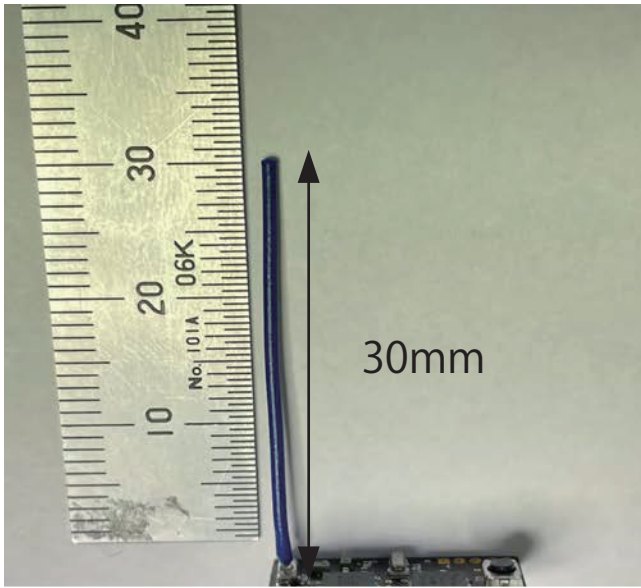


# R-15 Antenna Spec



Antenna Type:  $1/4 \lambda$  monopole

Antenna Gain: +0.5dBi

Frequency: 2400MHz-2480Mhz

KONDO KAGAKU CO., LTD.

4-17-7 Higashi -Nippori, Arakawa-ku, Tokyo, Japan

## Radiation pattern

