

At this time we would like to thank you for purchasing the KR-420XT. Please read this instruction manual before using this product. Also please read the instruction manual of the transmitter being used. Also, these information for products may be changed without announcement. Please understand with advance.

For your safety Please note the handling and use of this product.



The contents of this display show a possibility of death or where a serious injury may occur
Warning or a highly substantial damaging a Warning accident may occur.

●This product is manufactured for surface use radio controls. *Discontinue use for all other purposes. Discontinue use in the event of a thunder storm.
*There is danger of a lightning bolt striking the antenna of the transmitter. ●Discontinue use when consuming alcohol or medication that may hinder concentration or judgment. *Unexpected accidents are caused with a judgment mistake. ●When rain and puddles are present, please discontinue use. *There are times when water enters into the equipment and control will be lost.
●Only use the batteries specified in the instruction manual of the transmitter. ●To turn the system on, start by turning on the transmitter then the receiver. To turn off the system, turn off the receiver first, then the transmitter in this sequence. ●Please be sure to use only our products for the transmitter and servos. *Concerning the damage and the like, which is generated when combining products that are not our company's genuine products we do not owe responsibility. ●Altering the transmission module is inhibited by law and is subjected to penal code violations. Resolution remodeling of all products may result in the cause of a short and other accidents. In addition, if this product is altered we will refuse repair service.
●Please do not use this product inside an airplane, hospital, near any automatic control equipment, medical electrical machinery and apparatus such as fire alarms. In addition with respect to the law, if this product effects other radio equipment and electronic equipment, use must be discontinued at once.



This displays shows the possibility or a substantially damaging accident which can cause Attention injury.

●Please avoid storage in a place of high temperatures and high humidity because it may cause the breakdown, damage and deformation of the product. ●Please note when using with an engine model, place where exhaust and the waste oil will not come into contact with the product. *In case of submerging in oil or water, please send it out for repair. ●This product's performance is designed for use in the shown specified usage which is based on this instruction manual and the instruction manual of the transmitter which is used. When the instructions are not understood, please contact our service department for advise. ●After verifying the safety of use, think of all the accidents possible and please enjoy with responsibility.

**Our company cannot owe responsibility from the nature of the radio control models
And the customer assumes all responsibilities that result from this product being used.**

Summary of this product

Features

1. 2.4GHz FHSS micro receiver

It is the smallest, lightest receiver in this class.
*Refer to the installation instructions below.

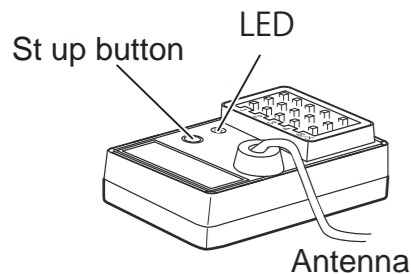
2. Compatible for Two ways communication

You can use sensors and device which are compatible for compatible for two ways communications.

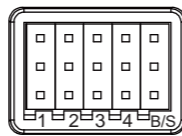
3. REAL TIME ICS support.

You can change device setting value which support REAL TIME ICS without turn off power.

Name of parts



When a channel is not in use and to prevent dirt and dust, attach the provided connector cap.



4 : Servo or ESC are connected.
3 : Servo or ESC are connected.
2 : Throttle servo or ESC are connected.
1 : Steering servo is connected.
B/S : Battery or serial compatible devices are can connected.

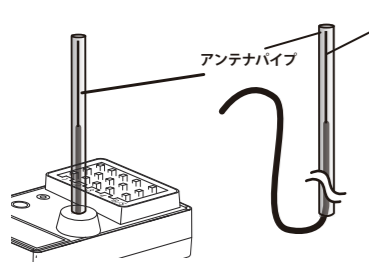
Specifications

●RF mode: 2.4GHz XT method. ●HCS/Normal /Serial are supported. ●Except serial are maximum 4 channels. Serial is maximum 8ID. ●Fail safe function. ●operation voltage: 4.8 to 7.4V ●Dimensions: 30.9. x 18.4 x 5cm ●Weight: 5.8g(Normal antenna) 5.4g(short antenna)
●Compatible Transmitter: EX-NEXT. Can not use with FHSS or DS method radios.

Installation

Installing the Antenna

- Please use plastic mounts and a plastic antenna tube. Please keep the antenna wire elevated to the highest position available.
- Please do not use a metal antenna mount because it will create problems.
- To protect the main antenna, insert the antenna into the antenna tube.
- The short anten is can be install to receiver's case directly.

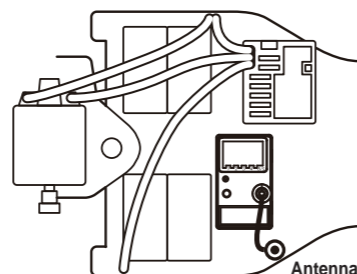


●Antenna tip 3cm (silver wire) is the working part of the antenna.
※Do not disconnect or cut the antenna.

For the prevention of the loss of the antenna tube, use adhesive to secure.

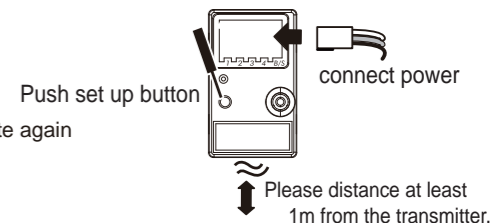
Antenna Installation Location

Please keep distance to the receiver site, due to noise sources of the battery, motor, ESC, etc. if possible.



Pairing

- ①Prepare the transmitter (or module) for the pair process. (Please read the instruction manual of the compatible transmitter or module.)
- ②While pushing the set button on the receiver, turn the power source ON, or push the setup button when had powered on.
- ③Release the set button when the LED lamp of the receiver lights up. Once it goes out, it will illuminate again and the pairing will be complete. If the LED is flashing or dim, please try to set again.
- ④Please quit pairing mode of the transmitter. Receiver is change to normal working automatically after pairing.



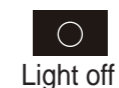
Set up for fail safe

Setup steps

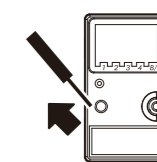
- 1, Turn on the transmitted and receiver.
- 2, Operate and hold trigger to the position of fail safe.
- 3, Push st-up button on the receivev



③, Please release set-up button, when LED are light off.



④, LED is light on again.



Fail safe setting are finished. Please be sure to check this setting is correct or not.

Device for can useing

The following products can be used by connecting to this product. In addition, our operation guarantee is only for our products. If it is a product of another company, please use it at your own risk.

- 1, PWM compatible servo and speed controller
It is a product sold for general radio control. Products that are currently maintainable are eligible. Please note that operation is not guaranteed for products that have already been excluded from maintenance.
- 2, HCS compatible products
Servo products of RSX3 / BSX3 series and later can operate in HCS mode, which is more responsive than conventional PWM compatible products.
- 3, Serial mode compatible products
Servos and other equipment with serial mode can operate even faster than HCS.
- 4, Bidirectional mode compatible sensor
In the mode that enables two-way communication, various sensors that will be released in the future for acquiring information on the receiver side can be connected.

For FCC

This device complies with part 15 of the FCC Rules. Operation is subject to the following two conditions:
(1) This device may not cause harmful interference, and
(2) this device must accept any interference received, including interference that may cause undesired operation.

Changes or modifications not expressly approved by the party response for compliance could void the user's' authority to operate the equipment.

●About Repairs

- When breakdown repair it is requested, please report the breakdown status in as much detail as possible. By noting the problem, repairs are performed quicker.
- When you believe you have a breakdown.
- Please refer to your manual once more and please inspect.
- When you do not understand something, please inquire our service department.
- When inquiring to our service department about a breakdown, please include in as much detail as possible of the contents mentioned below about your problem.
- Name of products (battery, car, transmitter & motor) used.
- When breaking down, usage condition and description of breakdown condition.
- Your address, name and telephone number.
- When a repair is being requested, please be sure to send the memo which includes the above-mentioned contents in as much detail as possible.

KONDO KAGAKU CO.,LTD.
4-17-7 Higashi-Nippori, Arakawa-ku, Tokyo Japan
Phone : +81-03-3807-7648
Website : <https://www.kopropro.co.jp>

