

INSTALLATION INSTRUCTIONS

ENGLISH

WARNINGS

- TO AVOID FIRE, SHOCK, OR DEATH; TURN OFF POWER AT CIRCUIT BREAKER OR FUSE AND TEST THAT POWER IS OFF BEFORE WIRING!
- To be installed and/or used in accordance with appropriate electrical codes and regulations.
- If you are unsure about any part of these instructions, consult an electrician.

CAUTIONS

- Use this device with copper or copper clad wire only.
- For indoor applications only.
- Save these instructions.

Before Installation

- Install into any single gang device back box.
- Support Multi-gang installations.
- Require Decora® faceplate, sold separately.
- Devices use 0-10Vdc low voltage control wires which may be installed as Class 1 or Class 2.

IMPORTANT NOTE: If installed as Class 2, all devices in the circuit must be Class 2 rated and this switch must be wired per instructions below.

Class 2 Installation:

As required under NEC code NFPA 70, paragraph 725.136 (d), the Class 2 0-10V (gray and violet) control wires must be mechanically separated from Class 1 wiring (line, neutral and ground power lines) when located within the same electrical box. This is accomplished by installing a mechanical barrier such as silicone tubing or other non-conducting sleeve over the length of 0-10V control wires.

When product is used with 120VAC power source and the 0-10V control wires are connected to CL3, CL3R or CL3P rated control cables (or permitted substitute), then silicone tubing or other non-conducting sleeve is required over the control wires for the entire wire length from the device to the location where the wires exit the box. Tubing is **not** required on the CL3, CL3R or CL3P between the wire connector and extending out of the electrical box.

When used with 277VAC power source and the 0-10V control wires are connected to CL3, CL3R or CL3P rated control cables (or permitted substitute), then silicone tubing or other non-conducting sleeve is required over the control wires for the entire wire length from the device to the location where the wires exit the box. Tubing is **also** required on the CL3, CL3R or CL3P between the wire connector and extending out of the electrical box.

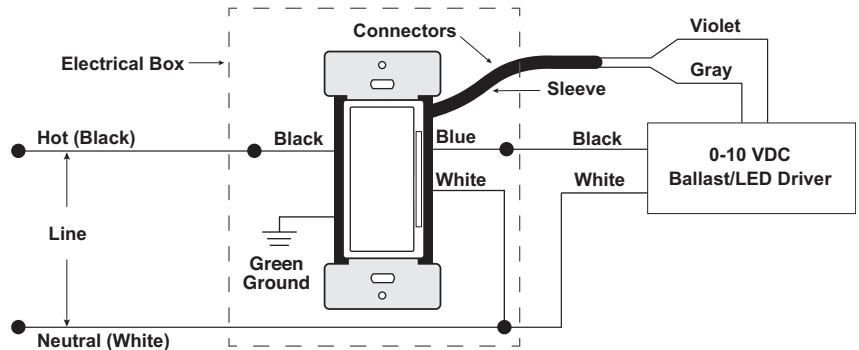
NOTE:

- Silicone tubing should be NRTL (UL/CSA/ETL) recognized or equivalent to provide mechanical separation equal to .25" in air.
- Connectors joining 0-10V control wires should be approved LISTED CONNECTORS.
- Wire connectors and wire tubing should be provided by the installation contractor.

Installation

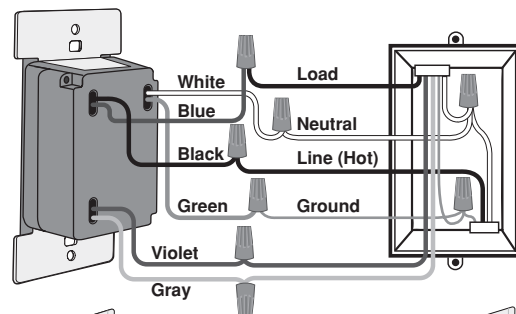
WARNING: TO AVOID FIRE, SHOCK, OR DEATH; TURN OFF POWER at circuit breaker or fuse and test that power is off before wiring!

1. Strip wires 3/4" and connect as per wiring diagram. Ensure wires are firmly attached and there is no exposed copper.



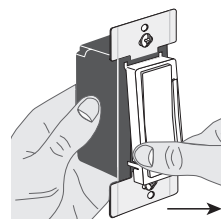
Class 1 installation shown (for Class 2, refer to notes)

2. Gently place the wires and your device into the wall box and attach with screws provided.
3. Restore power and test ON/OFF operation. LED locator light should be ON when switch power is turned OFF.

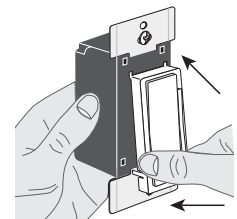


4. If desired, change switch color.

5. Install Decora faceplate.



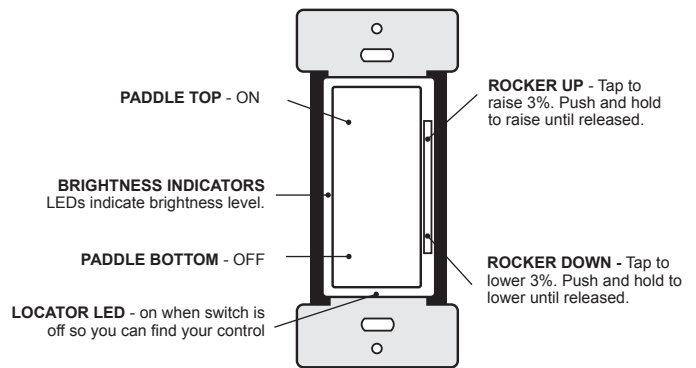
To release, push sides.



Line up and press in to attach.

Installation (cont'd)

6. Enroll Device and configure your system. Using your system, you may be able to program different functionality, such as pushing the top of the paddle for a presentation scene or pushing the bottom of the paddle for OFF.



Configuration and Programming

- Control functionality, LED Behavior, and user interaction can be adjusted based on the features of your system. Please refer to your system documentation for details.
- Enrollment – Out of the box, the device is in Auto Join mode and is always active and attempting to join an open network. If you need to add your device to a network and it is not in auto join mode, reset to factory default and it will start searching for a network.
 - Locator LED will blink GREEN slowly while looking for an open network.
- Factory Default – resets device to out of the box state
 - Push top or bottom of paddle for approximately 20 seconds until the locator LED flashes AMBER the second time.
 - Release paddle.
 - Locator LED will alternate between green/amber while device is resetting, and turn off when complete.
 - When complete, device will reboot then revert to auto join mode where it is searching for a network to join. Locator LED will blink GREEN slowly while looking for an open network.
- Status Check
 - Push top or bottom of paddle for 5 seconds until the locator LED flashes AMBER once.
 - Release paddle.
 - The locator LED will blink to indicate device state.
 - One RED blink: device unconfigured.
 - Three GREEN blinks: Connected to network, network formed.
- NOTE:** holding the top or bottom of the paddle for 25 seconds or greater will abandon all programming and return to normal operation. You will know you've hit the 25 second mark because the locator LED will flash AMBER the third time.

SPECIFICATIONS		
Catalog Nos.	ZS057-D0Z	ZS057-30Z
Input Voltage/Frequency	120-277VAC, 50/60Hz.	347VAC, 50/60Hz.
Input Current		
120V	Standby: 0.2W Max: 0.5W+Load Current	Not rated for use
277V	Standby: 0.3W Max: 0.6W+Load Current	Not rated for use
347V	Not rated for use	0.5+load
Load Ratings		
LED, CFL, Electronic Ballast @ 120V	8A	Not rated for use
LED, CFL, Electronic Ballast @ 277V	5A	Not rated for use
LED, CFL, Electronic Ballast @ 347V	Not rated for use	4A, 1388VA
Magnetic Ballast @ 120V	10A	Not rated for use
Magnetic Ballast @ 277V	10A	Not rated for use
Magnetic Ballast @ 347V	Not rated for use	3.45A, 1200VA
Resistive, Tungsten @ 120V	6.67A	Not rated for use
Resistive, Tungsten @ 277V	6.67A	Not rated for use
Resistive, Tungsten @ 347V	Not rated for use	800W
Motor @ 120V	1/4Hp (FLA 5.8A)	Not rated for use
Motor @ 277V	1/3Hp (FLA 3.0A)	Not rated for use
Motor @ 347V	Not rated for use	1/4Hp
IP Rating	IP10	
Network Connections	IEEE 802.15.4, 2.4Ghz, wireless, mesh network up to 75' range between device	
Operating Temperature	0°C - 40°C (32°F - 104°F)	
Storage Temperature	-40°C to 85°C	
UL Pollution Degree	2	
UL Impulse Voltage	6000V	

FCC COMPLIANCE STATEMENT:

FCC ID: QGH-B167601

The enclosed device complies with Part 15 of the FCC Rules. Operation is subject to the following two conditions:

(i.) This device may not cause harmful interference (ii.) This device must accept any interference received, including interference that may cause undesired operation. Any changes or modifications not expressly approved by Leviton could void the user's authority to operate this equipment. This equipment has been tested and found to comply with the limits for a Class B digital device, pursuant to part 15 of the FCC Rules. These limits are designed to provide reasonable protection against harmful interference in a residential installation. This equipment generates uses and can radiate radio frequency energy and, if not installed and used in accordance with the instructions, may cause harmful interference to radio communications. However, there is no guarantee that interference will not occur in a particular installation. If this equipment does cause harmful interference to radio or television reception, which can be determined by turning the equipment off and on, the user is encouraged to try to correct the interference by one or more of the following measures:

- Reorient or relocate the receiving antenna.
- Increase the separation between the equipment and receiver.
- Connect the equipment into an outlet on a circuit different from that to which the receiver is connected.
- Consult the dealer or an experienced radio/TV technician for help.

RF EXPOSURE AND CO-LOCATION:

To comply with FCC and ISED RF exposure limits for general population / uncontrolled exposure this device should be installed and operated with a minimum distance of 7.9 inches (20 cm) between the radiator and your body. This transmitter must not be co-located or operated in conjunction with any other antenna or transmitter.

INDUSTRY CANADA COMPLIANCE STATEMENT:

IC: 2473A-B167601

This device complies with Industry Canada license-exempt RSS standard(s). Operation is subject to the following two conditions: (1) this device may not cause interference, and (2) this device must accept any interference, including interference that may cause undesired operation of the device. **IMPORTANT!** Any changes or modifications not expressly approved by the party responsible for compliance could void the user's authority to operate this equipment. This Class B digital apparatus complies with Canadian ICES-003.

FOR CANADA ONLY

For warranty information and/or product returns, residents of Canada should contact Leviton in writing at **Leviton Manufacturing of Canada ULC** to the attention of the **Quality Assurance Department, 165 Hymus Blvd, Pointe-Claire (Quebec), Canada H9R 1E9** or by telephone at **1 800 405-5320**.

LIMITED 2 YEAR WARRANTY AND EXCLUSIONS

Leviton warrants to the original consumer purchaser and not for the benefit of anyone else that this product at the time of its sale by Leviton is free of defects in materials and workmanship under normal and proper use for two years from the purchase date. Leviton's only obligation is to correct such defects by repair or replacement, at its option. **For details visit www.leviton.com or call 1-800-824-3005.** This warranty excludes and there is disclaimed liability for labor for removal of this product or reinstallation. This warranty is void if this product is installed improperly or in an improper environment, overloaded, misused, opened, abused, or altered in any manner, or is not used under normal operating conditions or not in accordance with any labels or instructions. **There are no other or implied warranties of any kind, including merchantability and fitness for a particular purpose,** but if any implied warranty is required by the applicable jurisdiction, the duration of any such implied warranty, including merchantability and fitness for a particular purpose, is limited to two years. **Leviton is not liable for incidental, indirect, special, or consequential damages, including without limitation, damage to, or loss of use of, any equipment, lost sales or profits or delay or failure to perform this warranty obligation.** The remedies provided herein are the exclusive remedies under this warranty, whether based on contract, tort or otherwise.

ARTWORK PRINT SPECIFICATIONS

PART NUMBER DI-000-ZS057-02B-X1

REV _____

DESCRIPTION Instruction Sheet

SPECIFICATIONS :

* Artwork must be printed at 100% (1:1 scale)

* Thickness: 40 lb.

* Material: _____

* Finish: _____

_____ :

* For manuals - designates cover specifications

* Color(s): 1 over 1

1: Black

2: _____

3: _____

4: _____

Spot

CMYK

* Fonts:

1: Helvetica

2: _____

3: _____

4: _____

Die Line Key: - . . . - Perforate

_____ Die Cut

----- Fold Line

----- Kiss Cut

..... Cellophane

===== Glue

MANUAL INTERIORS / BINDERY / FOLD SCHEME :

Body Material: _____

Thickness: _____

Bindery

Die cut

Fold

Saddle Stitch

Perfect Bind

Drill

Trim

Color(s): _____ over _____

1: _____

2: _____

3: _____

4: _____

Spot

CMYK

Fonts:

1: _____

2: _____

3: _____

4: _____

PROCESS :

Offset

Flexo

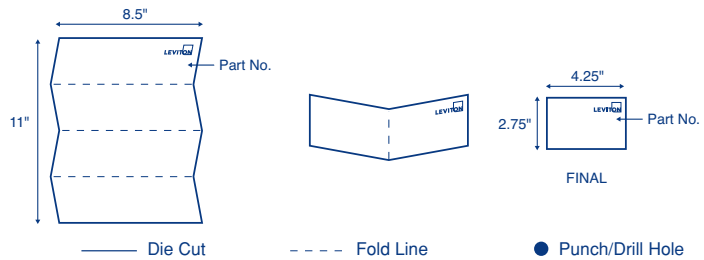
Other _____

Line Screen: _____

Angle: _____

Resolution: _____

DIMENSIONS / FOLD SCHEME / BINDERY DIAGRAM



COMMENTS :

The information in this document is the exclusive PROPRIETARY property of LEVITON MANUFACTURING COMPANY, INC. It is disclosed with the understanding that acceptance or review by the recipient constitutes an undertaking by the recipient. (1) to hold this information in strict confidence, and (2) not to disclose, duplicate, copy, modify or use the information for any purpose other than that for which disclosed.

FOR LEVITON USE ONLY

Approvals: Plant 08 J. Tang

Mktg _____

Cust _____

CQA _____

Eng _____

Other _____

PM D. Buerer

S & A D. Moskovkin

Other _____

PN-ARN: ECR18681-6168

ECR Number: ECR18681

Pilot Rev: _____

Artist: K.MARKELL

Released Artwork Format: Production PDF

Artwork Release Date: _____

Notes: _____