

FLEX **NX**™





THE NEW STANDARD IN CONCRETE SCANNING

We know each jobsite presents unique challenges. You rely on dependable tools to keep you working throughout the entire day. Your safety and reputation require you to know what's under the surface.

Before you cut, core or drill, use Flex NX™ to locate rebar, post tension cable, and metallic and non-metallic objects accurately, efficiently and safely.

FLEX NX™

SIMPLE. FLEXIBLE. TRUSTED.

CONCRETE SCANNING MADE EASY

How do you build on the legacy of the most successful concrete scanners in the industry? You keep what works while still focusing on improving every detail.

All-in-one simplicity, minimal navigation, innovative data collection and no required subscription.

Flex NX, powered by Nexus™, is the most powerful and efficient concrete scanner in the industry.



WIRELESS MADE EASY

Flex NX allows for effortless pairing of wireless NX accessory antennas using Tap-to-Connect technology as well as wireless data transfer and software updates.

GET THE FULL PICTURE

Flex NX gives you the full picture by introducing a one-pass cross polarization design that enables you to quickly and easily locate and identify targets.

MAKE THE COMPLEX SIMPLE

Use Flex NX's innovative Flex Positioning system to quickly identify areas of interest in real-time without the need for complicated setups or grids.

DELIVER RESULTS

Accurately mark your findings on the ground, then easily create and send interactive reports before you leave the jobsite.

SIMPLE



THE MOST COMPLETE CONCRETE SCANNING SYSTEM

When you see the Powered by Nexus label, you know that you have the most flexible scanning equipment in the industry. Flex NX gives you the power to choose the setup that matches your needs so that large areas, tight spaces, walls and ceilings are no problem for your Flex NX system.

Don't settle for incomplete solutions.

TACKLE ANY JOB

The flexibility of your Flex NX and NX wireless antennas allows you to succeed no matter what the jobsite throws at you.

THE VERSATILITY YOU NEED

View results directly on your Flex NX or quickly connect any phone or tablet for different display options when the situation requires it.

CHOOSE YOUR SETUP

The Flex NX and NX antennas are designed with a universal mount to help reduce fatigue and provide better ergonomics. Switch between the handle, extension pole or off the shelf mounting accessories.

COMPLEX PROBLEMS, MANY SOLUTIONS

Data needs to be easy to collect and view. Flex NX provides multiple data collection and visualization modes, including LineScan, Focus Mode, and the new, innovative Flex Mode. Now you have the flexibility you need to deliver trusted results.

FLEXIBLE

YOUR TRUSTED PARTNER

You trust GSSI, the equipment we make and the results that you get from your system. In return, your customer trusts you.

Every product we offer, including Flex NX, is built and tested with your jobsite environment in mind. Extreme heat, cold, dust and water are no match for your Flex NX system.

JOBSITE PROVEN

- Rated IP65
- -20°C to +50°C (-4°F to +122°F)
- High capacity Lithium-ion batteries

WE'VE GOT YOUR BACK

In addition to our industry-leading two year equipment warranty, our promise to you is to provide comprehensive training, unrivaled customer support and world class expertise.



TRAINING IS A BIG PART OF WHAT WE DO HERE AT GSSI

As part of our commitment to our customers, we have a team of dedicated technical trainers ready to work with users of all experience levels. We take pride in making sure our customers have the knowledge to tackle any job with confidence.

After our customers complete a training, our training team continues to provide support when needed as our customers' success is of utmost importance to GSSI.

4

NUMBER OF
FULL TIME
TRAINERS

59

YEARS OF
EXPERIENCE
IN TEAM

120
+

NUMBER OF
CLASSES,
YEARLY

5k

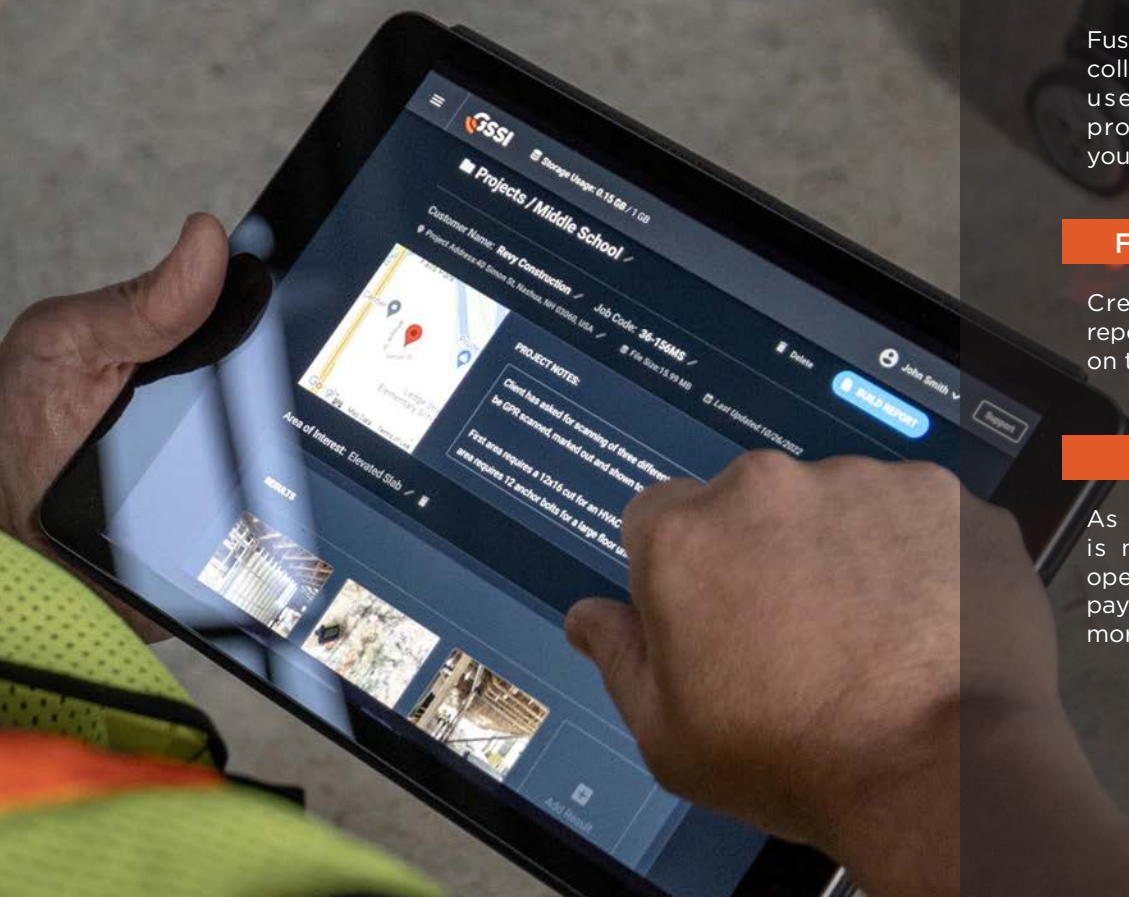
DEDICATED
TRAINING SPACE
(SQ. FT.)



TRUSTED

GSSI FUSION™

The need to organize and share your results is becoming increasingly important. High quality deliverables help to separate you from the competition.



WIRELESS TRANSFER

Easily transfer projects wirelessly from your Flex NX to Fusion using any connected phone or tablet.

COLLABORATE & CONFIRM

Fusion enables real-time sharing and collaboration of projects between users, allowing for increased productivity and confidence in your results.

FAST REPORT CREATION

Create and send an interactive report to your customers while still on the jobsite.

ON YOUR TERMS

As an optional accessory, Fusion is not required for equipment operation. It scales with you; only pay for what you need and nothing more.

NX ANTENNAS

The Right Tool for the Job

Every jobsite presents challenges that require special tools. NX antennas were designed as accessories for your Flex NX system to keep you working in all situations. Choose from different antennas, each engineered to deliver high-performance results without compromise.

WIRELESS CONNECTIVITY: Simply tap your NX antenna to your Flex NX and start scanning.

RUGGED PERFORMANCE: NX antennas are built to the same standards as your Flex NX so your entire system can keep working even in the harshest environments.

FLEXIBLE CONFIGURATIONS: Quickly switch between cross polarization and side car scanning with the adjustable survey wheel.



	NX25	NX15*
MAX DEPTH	0-75 cm (0-30 in)	0-100 cm (0-40 in)**
OPERATING TEMPERATURE	-20°C to +50°C (-4°F to +122°F)	
IP RATING	IP65	
WEIGHT	0.83 kg (1.8 lbs) including battery	1.28 kg (2.8 lbs)** including battery
DIMENSIONS	11.2 x 11.2 x 10.5 cm (4.4 x 4.4 x 4.1 in)	13.2 x 13.9 x 13.9 cm** (5.2 x 5.5 x 5.5 in)

*Coming soon.

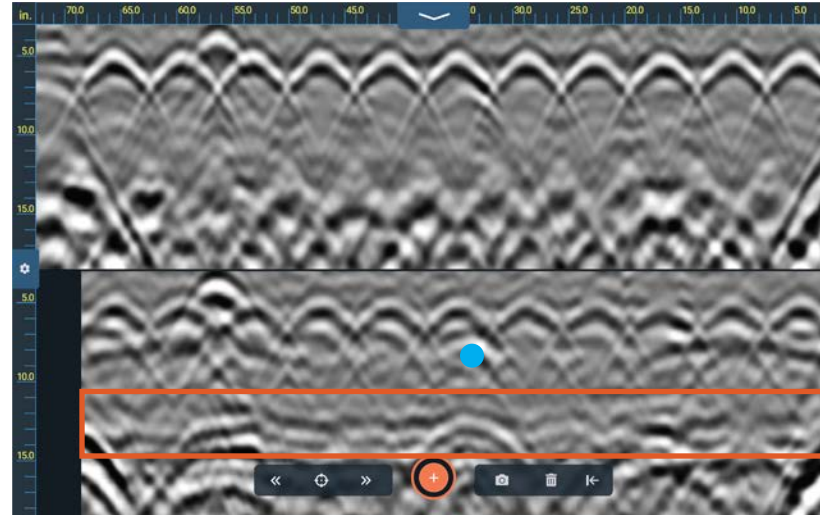
**Expected based on preliminary tests. Subject to change.

GET THE FULL PICTURE

ONE-PASS CROSS POL

Without seeing both standard and cross polarized data together, you're only getting part of the picture. Flex NX's dual channel mode helps to reveal and identify targets that can't always be seen with just one channel.

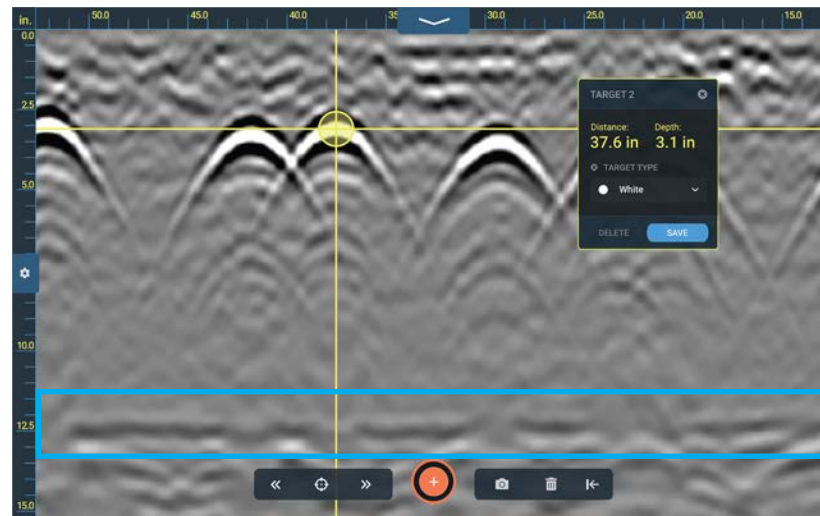
This example shows a suspended slab with a top rebar layer above a hard-to-see PVC electrical conduit. Data from the standard antenna (top) shows a series of high amplitude rebar targets obscuring the PVC conduit (blue dot). The cross pol data (bottom) shows the hidden PVC conduit and the clearly defined bottom of the slab interface (orange box). Also visible are the structural elements supporting the slab.



MULTIPLE DISPLAY OPTIONS

Easily switch between single channel and dual channel display modes depending on what you need to see. All modes support accurate placement of labeled targets using Flex NX's easy to use target tagging feature.

This example was collected with Flex NX on the concrete foundation of a large commercial building. Additionally, this data shows a layer of large rebar within the foundation. The concrete-air interface is the long flat reflector (blue box) at the bottom of the data file.



MAKE THE COMPLEX SIMPLE

FLEX MODE IMAGING

The Powered by Nexus* platform unlocks endless possibilities for collecting and viewing data. Flex Mode turns your Flex NX into the simplest and most flexible handheld imaging system in the industry by removing the need for complicated setups, additional positioning systems or grids.

Flex NX truly changes the way you can do your job.

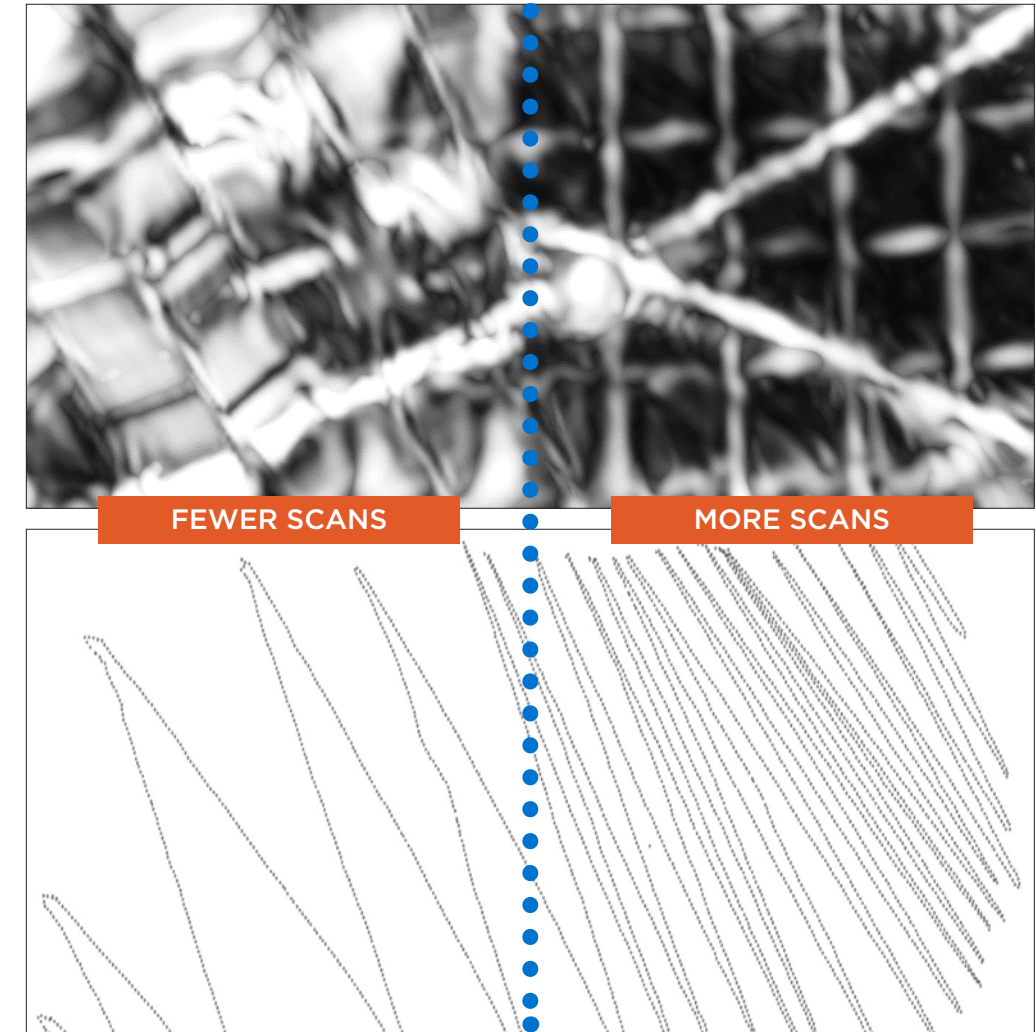
LESS SCANNING, FASTER RESULTS

Freely explore and quickly evaluate an area of interest.

As images begin to appear, focus your scanning on the regions that matter the most.

The more you scan, the clearer the image becomes.

*Multiple Patents Pending.



COMPARISON GUIDE



**StructureScan™
Mini XT**

Flex NX™

Operation	StructureScan™ Mini XT	Flex NX™
Locates metallic and non-metallic objects in concrete	✓	✓
High frequency, high resolution performance	✓	✓
2D scanning & data imaging	✓	✓
USB port	✓	✓
GSSI Fusion® compatible	✓	✓
Safety wrist strap	✓	✓
Quick start guide	✓	✓
Rugged transit case	✓	✓
Adjustable handle		✓
Remote display		✓
Wireless project transfer		✓
One-pass cross polarization data collection		✓
Tap-to-Connect accessories		✓
Flex Positioning		✓
Warranty	Two Years	Two Years
Subscription required	No	No
Configuration Options		
Standalone or in a kit	✓	✓
Wired accessory antennas	Palm XT	
Wireless accessory antennas		NX25, NX15*
Extension pole	✓	✓
LineTrac®	✓	

*Coming soon.

SPECIFICATIONS

Operation	
Unit Type	Self-contained all-in-one system
Device Type	Ground penetrating radar (GPR)
GPR Engine	Powered by Nexus™ CW (Patent Pending)
Operational Modes	Single, dual or merged channel LineScan, Focus Mode, Flex Mode
Max Depth	Flex NX and NX25: 0-75 cm (0-30 in) NX15: 0-100 cm (0-40 in)*
Gain Mode	Automatic gain with depth-based adjustment
Dielectric Settings	User-configurable
Languages	English, Spanish, Japanese, Korean, Chinese, French
Display	178 mm (7 in) LED backlit LCD touchscreen display
Storage	200 GB
Environmental	
Operating Temperature	-20°C to +50°C (-4°F to +122°F)
Storage Temperature	-40°C to +60°C (-40°F to +140°F)
IP Rating	IP65
Power	Lithium-ion battery
Dimensions	25.3 x 13.2 x 18.9 cm (9.9 x 5.2 x 7.4 in)
Weight	2.2 kg (4.9 lbs) including battery 2.4 kg (5.3 lbs) including battery and handle

*Expected based on preliminary tests. Subject to change.

System Includes	
Flex NX™ with adjustable handle	
Lithium-ion battery (2)	
US & Canada: Dual-bay battery charger	
International: Dual-bay battery charger with AC adapter and four (4) international plugs	
Rugged transit case	
Safety wrist strap	
Quick start documentation	
2-year warranty	

FLEX^{NX}™



THE NEW STANDARD IN CONCRETE SCANNING



MORE INFO

This device has not been authorized as required by the rules of the Federal Communications Commission. This device is not, and may not be, offered for sale or lease, or sold or leased, until authorization is obtained.



800.524.3011
sales@geophysical.com
www.geophysical.com