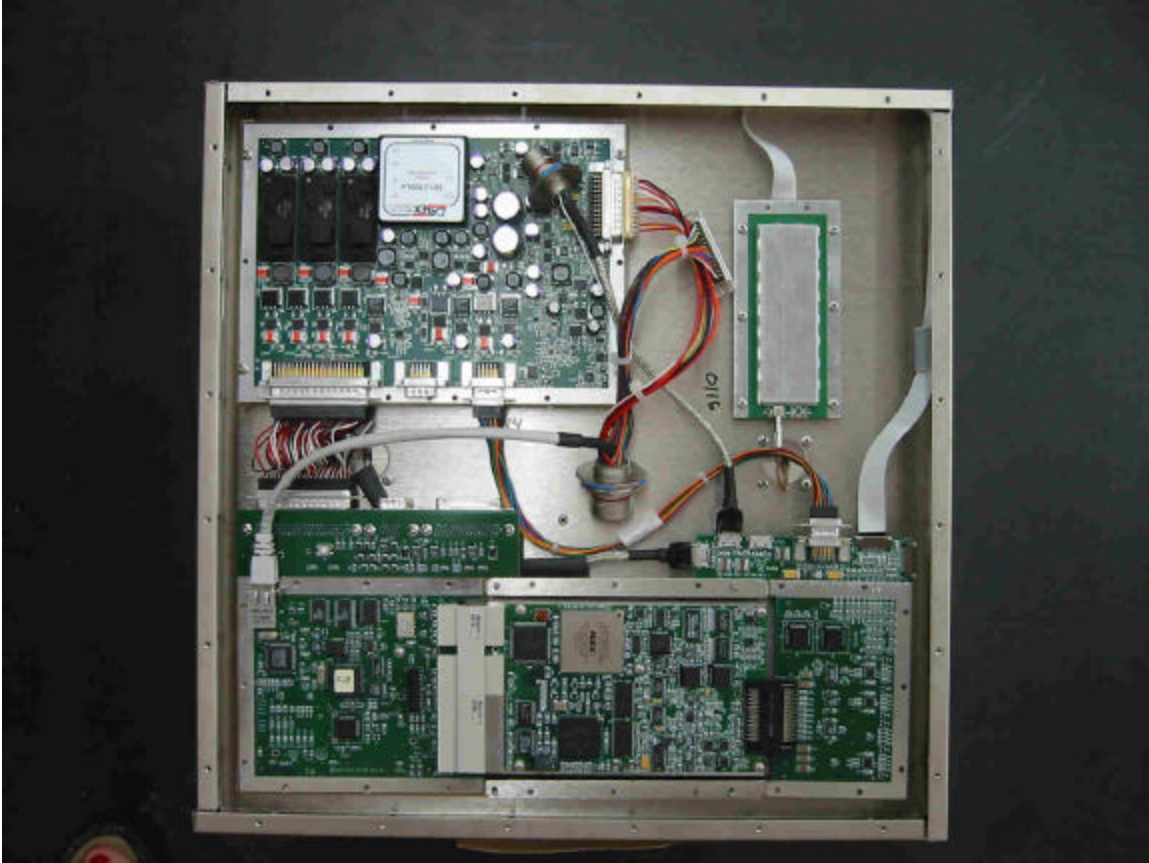


This is a revised document!!!! Wrong board was shown for #2 Differential Sample on page 3, which is now corrected. Board that was shown as Differential Sampler is actually #7 Impulse Generator, now shown on page 8. All changes are shown in RED.

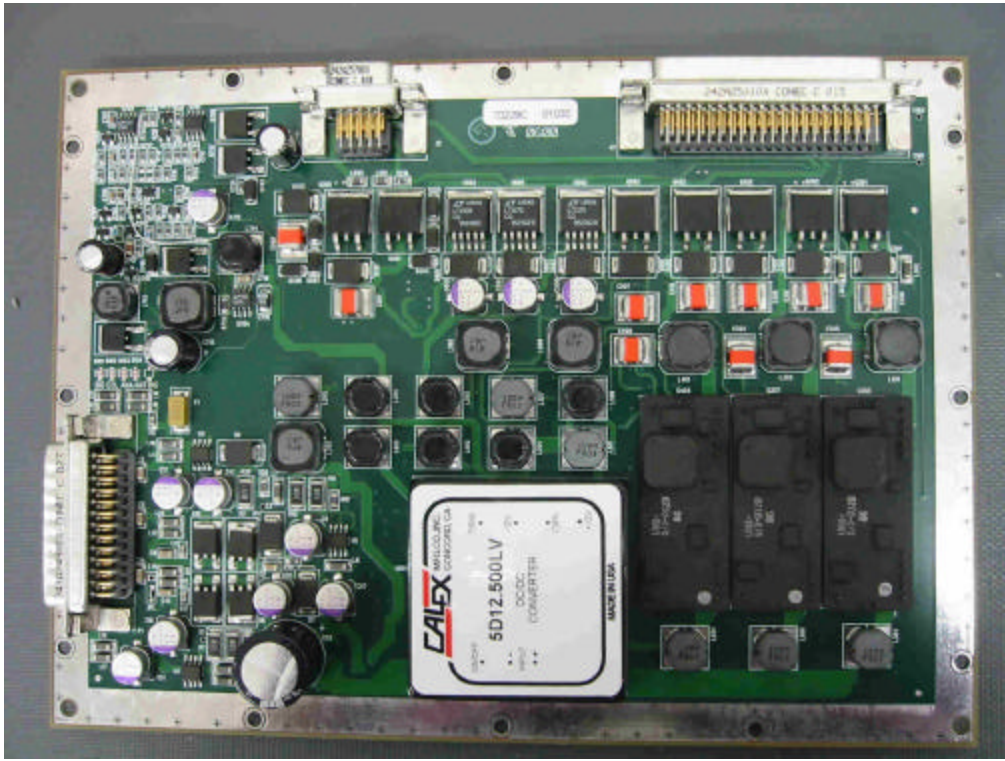


BOARDS SHOWN CLOCKWISE FROM UPPER LEFT:

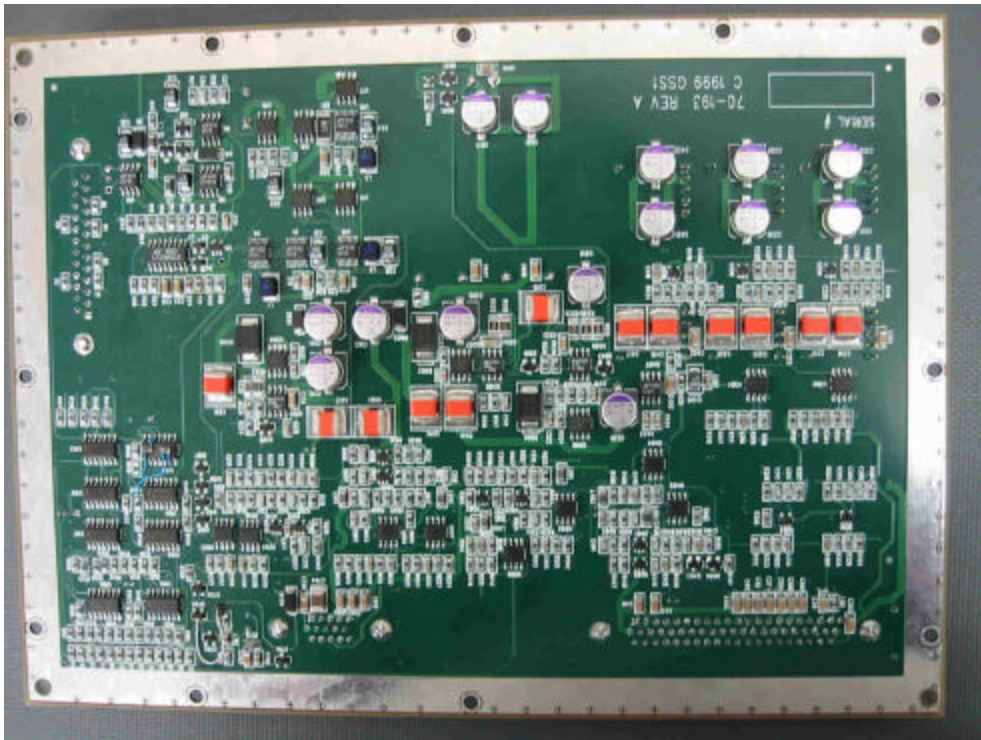
1. POWER SUPPLY BOARD
2. DIFFERENTIAL SAMPLER (SHIELDED)
3. MULTI PLEXER
4. RADAR
5. ACCESSORY BOARD
6. FAN BOARDS (NOT SHOWN) LOCATED ON BACKSIDE
7. **IMPULSE GENERATOR BOARD (NOT SHOWN) ATTACHES TO FAN BOARDS**

SEE PAGE 9 FOR VIEW WITH SHIELD INSTALLED ON BOARDS.

1. POWER SUPPLY BOARD

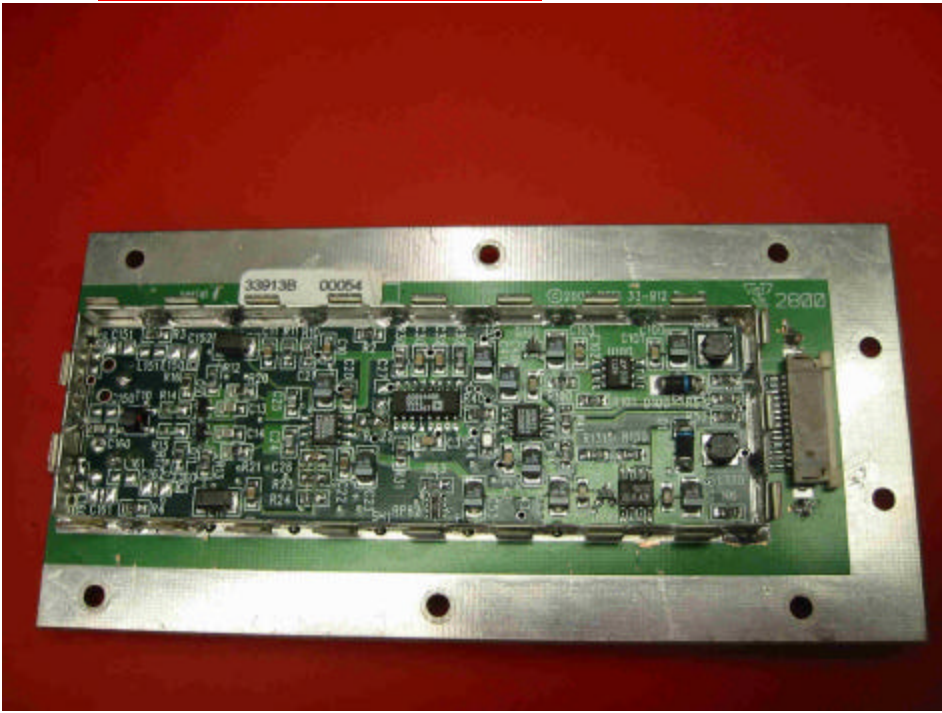


TOP

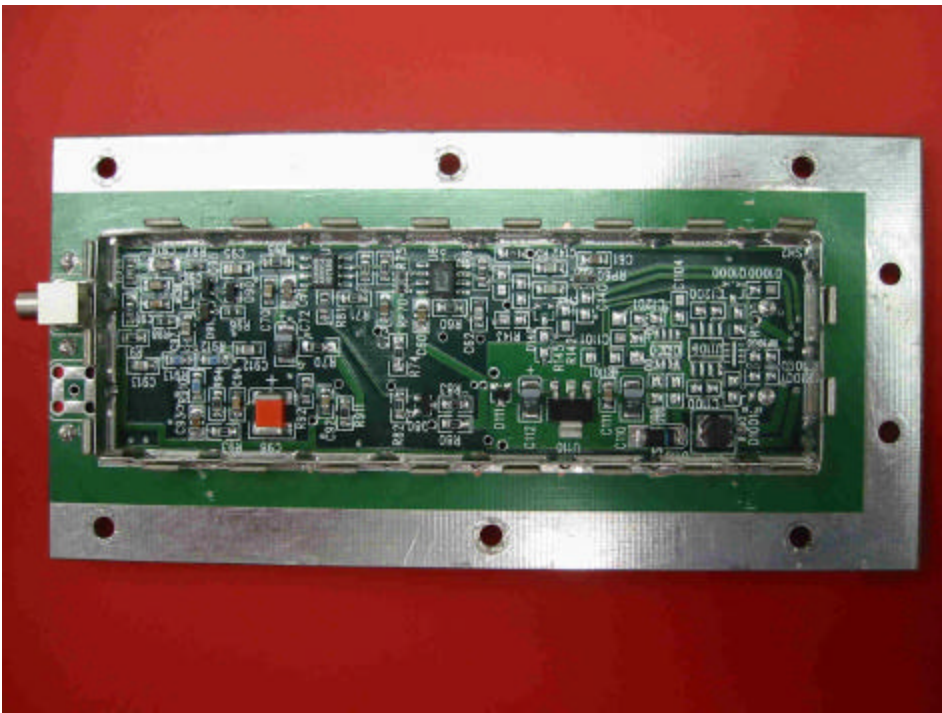


BACK

2. DIFFERENTIAL SAMPLER

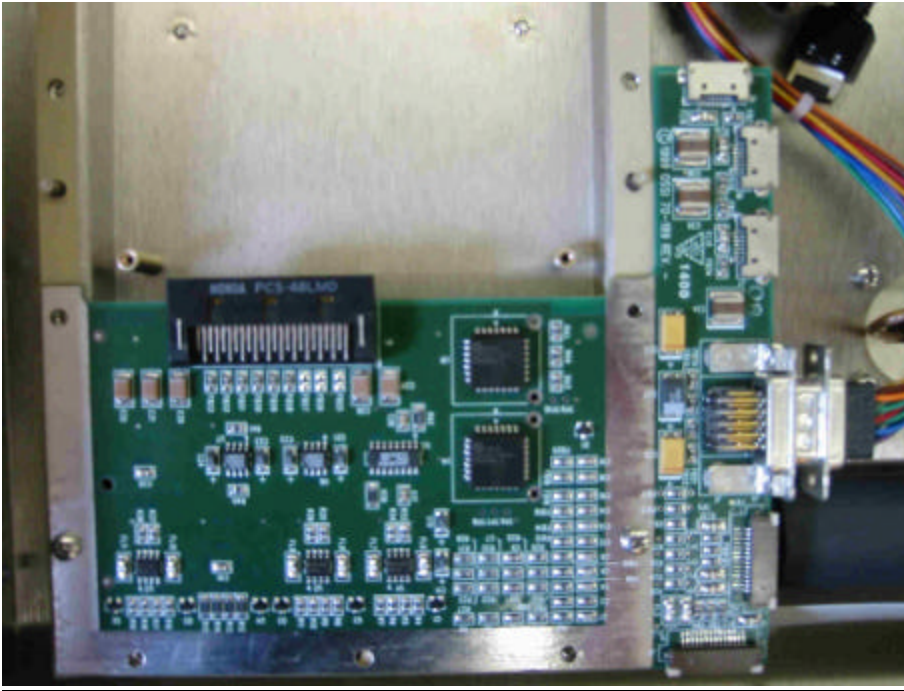


TOP

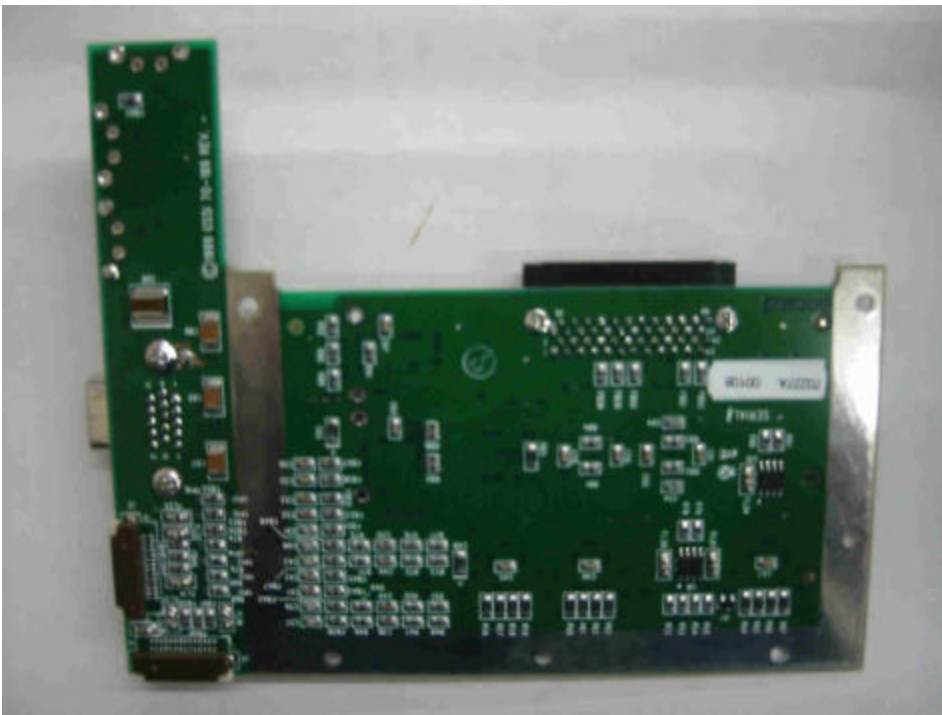


BOTTOM

3. MULTIPLEXER

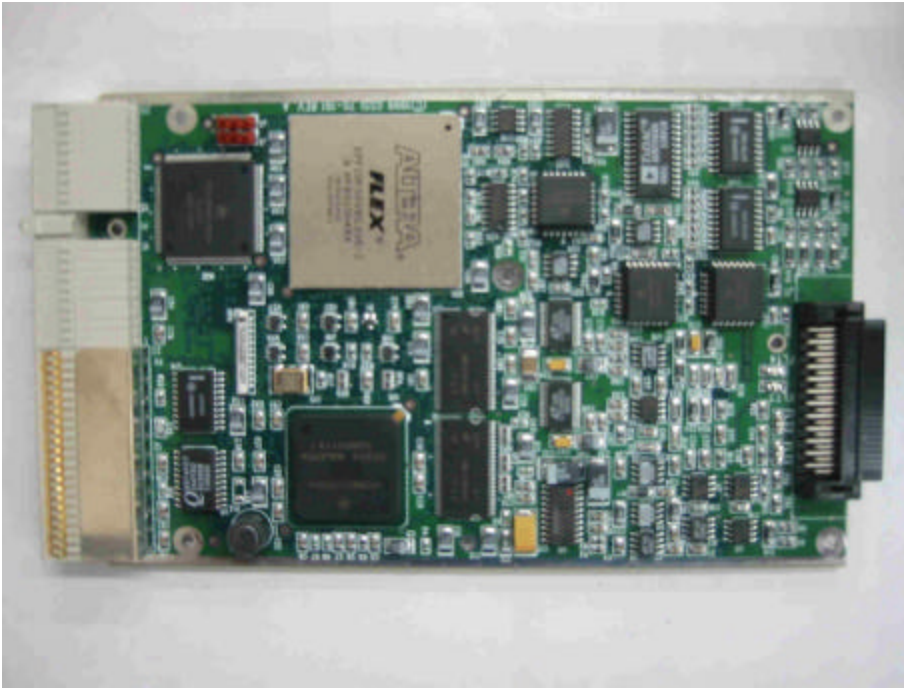


TOP (INSTALLED)

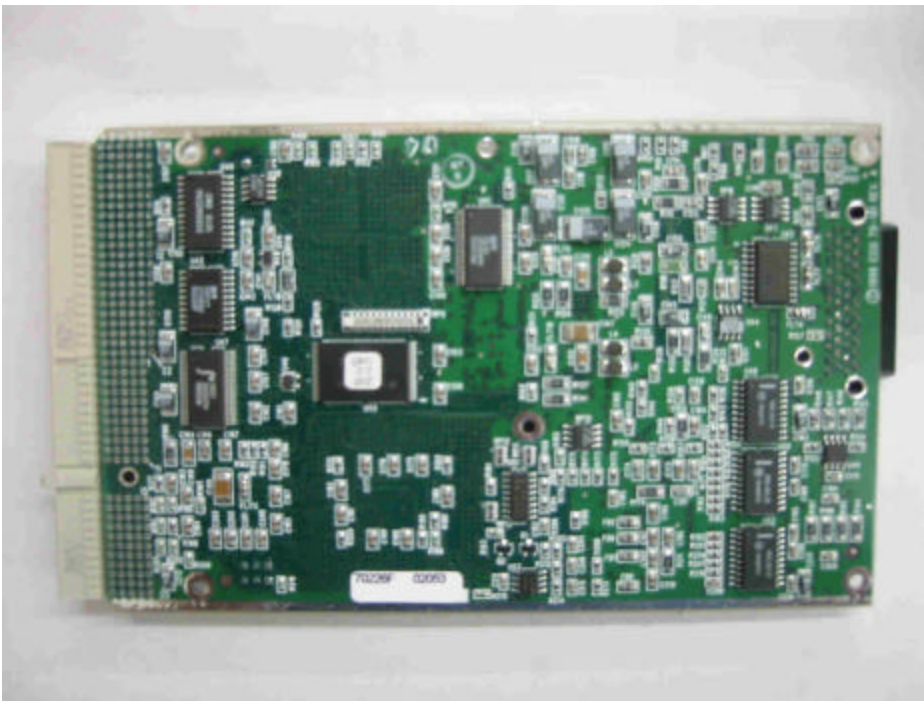


BACK

4. RADAR

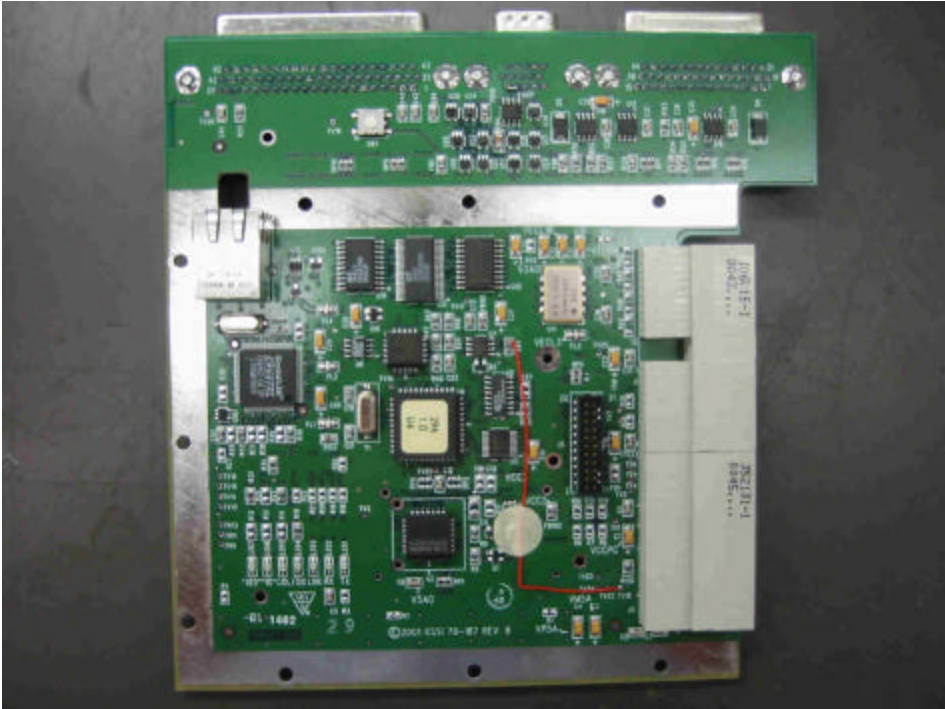


TOP

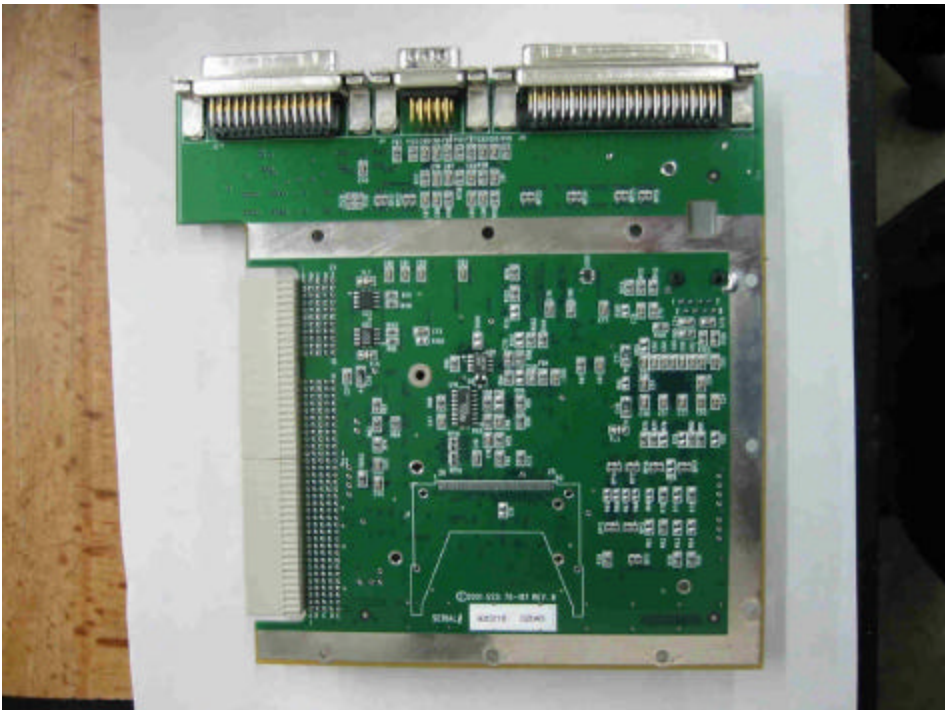


BACK

5. ACCESSORY BOARD

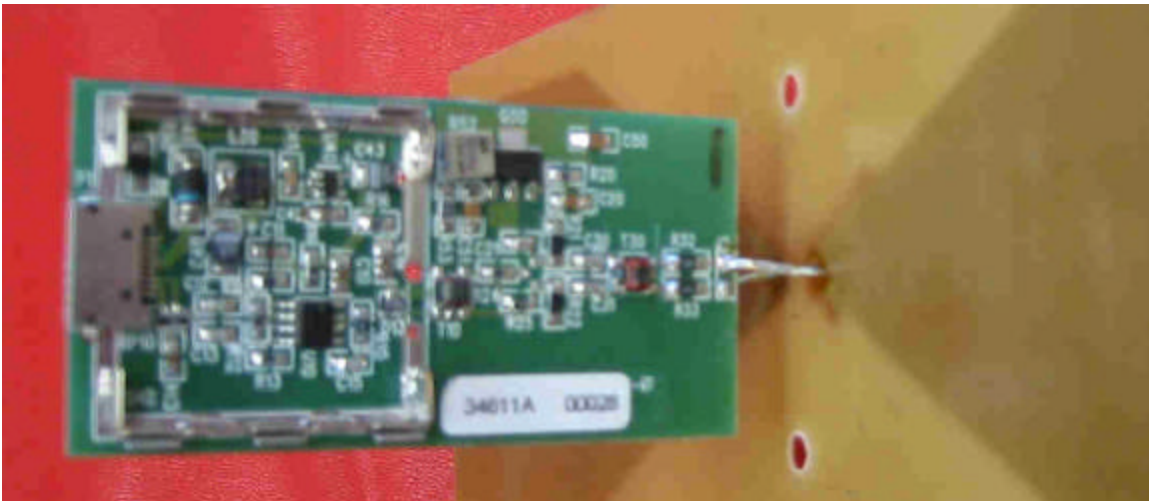
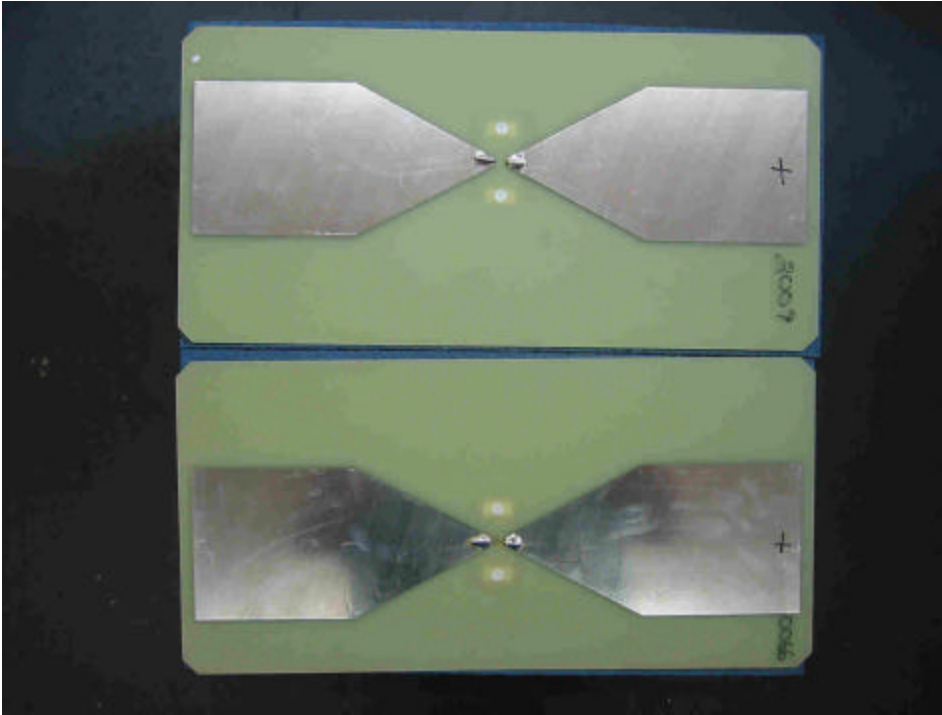


TOP



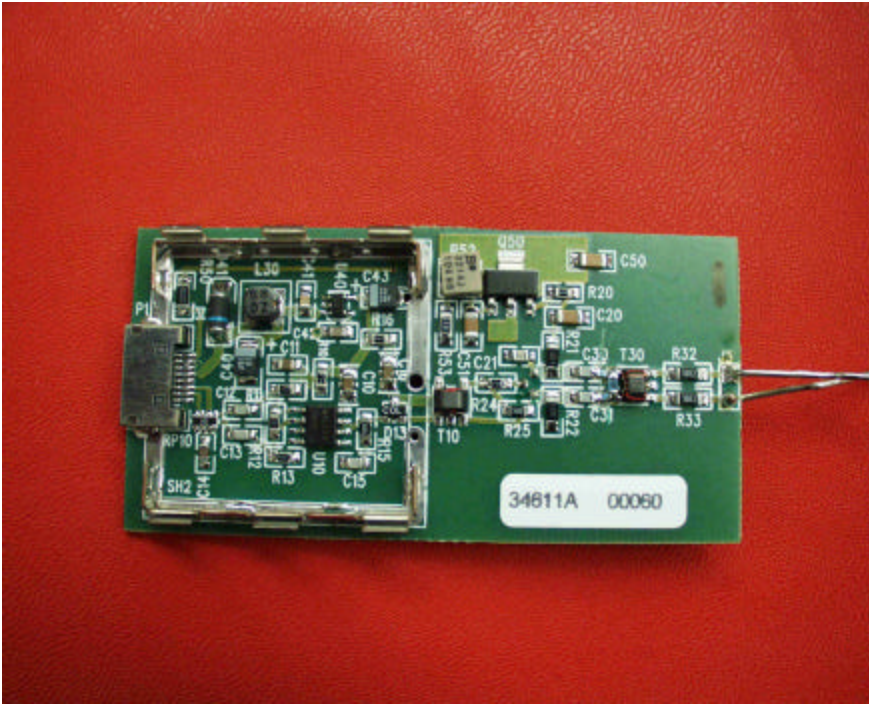
BACK

6. FAN BOARDS (2 PER UNIT)

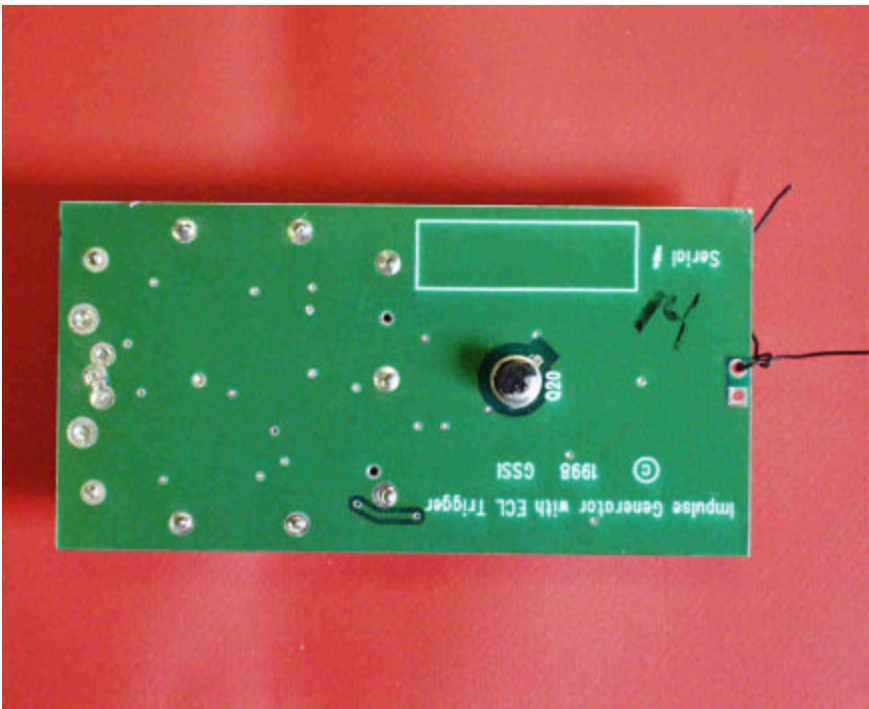


IMPULSE GENERATOR BOARD SHOWN SOLDERED TO BACKSIDE OF FANS.

7. IMPULSE GENERATOR BOARD (2 PER UNIT)

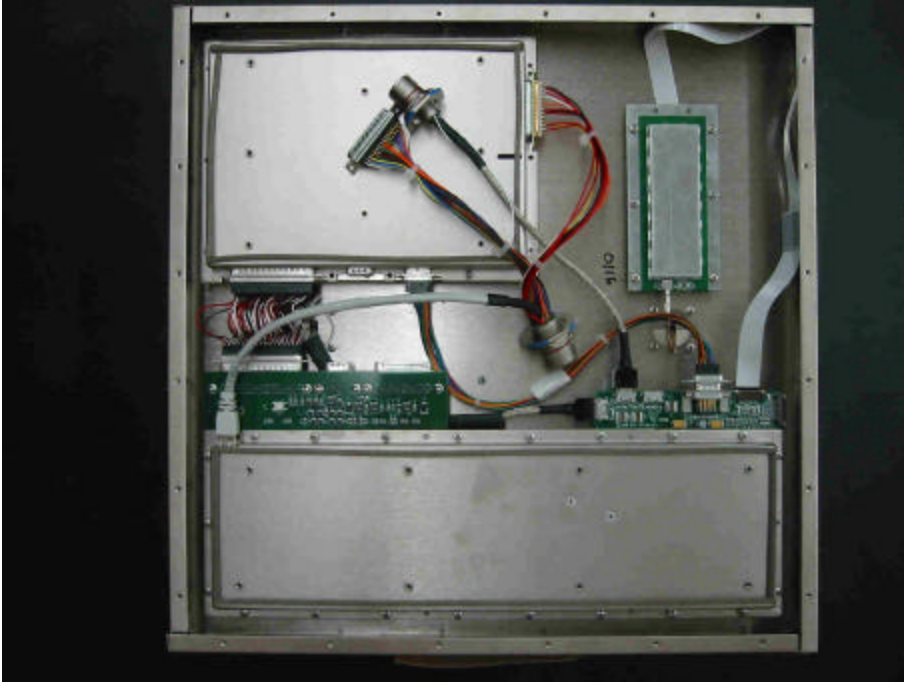


TOP WITHOUT SHIELDING CAN



BACKSIDE

INTERRAGATOR INTERNAL PHOTOS REV B



VIEW OF BOARDS WITH SHIELDS ATTACHED



SIDE VIEW

FAN PC BOARDS ARE LOCATED ON THE BOTTOM OF THE UNIT. IMPULSE GENERATOR BOARDS ARE ATTACHED TO FANS, ENCLOSED, INSERTED INTO SHIELDING FOAM (VISIBLE ALONG BOTTOM EDGE) AND CONNECTED TO BOARDS ON TOP.