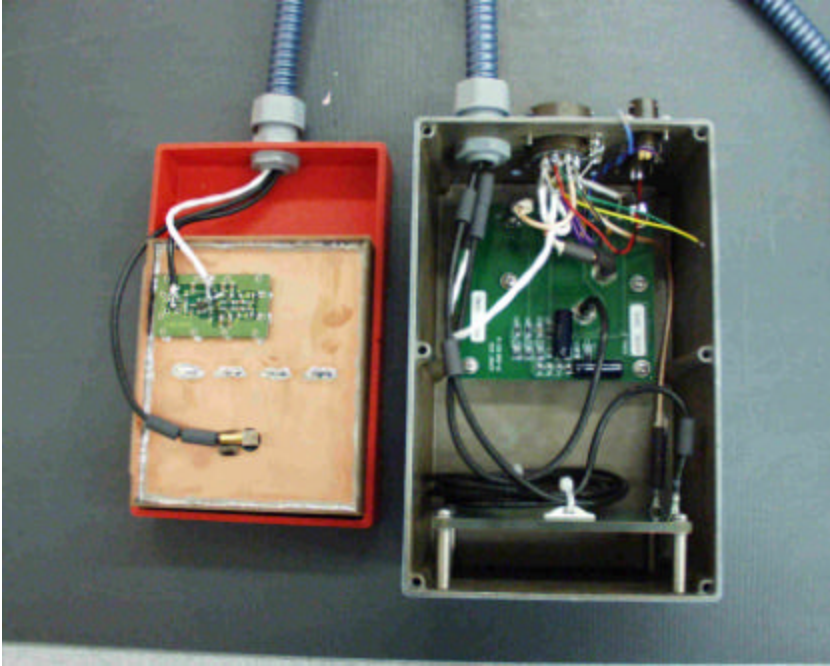


5100 ANTENNA ASSEMBLY  
Internal Photos

**5100 ANTENNA ASSEMBLY CONSISTING OF ELECTRONICS  
BOX AND ANTENNA HEAD**



Antenna head, on left, and electronics box, on right, shown with covers removed.

**ELECTRONICS BOARD CONSISTS OF:**

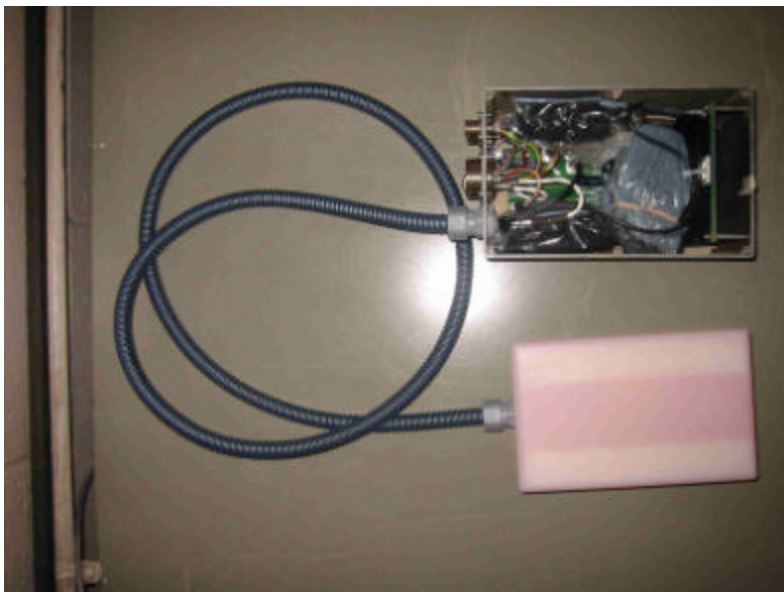
- |                                    |        |
|------------------------------------|--------|
| 1. AMP INTERFACE PC BOARD          | PAGE 4 |
| 2. 3 GHZ RECEIVER SAMPLER PC BOARD | PAGE 5 |
| 3. DELAY LINE PC BOARD             | PAGE 6 |

**ANTENNA HEAD CONSISTS OF:**

- |                           |         |
|---------------------------|---------|
| 4. 5100 TRANSMITTER BOARD | PAGE 8  |
| 5. BALUN PC BOARD         | PAGE 9  |
| 6. FAN PC BOARD           | PAGE 10 |

5100 ANTENNA ASSEMBLY  
Internal Photos

**5100 ELECTRONICS**

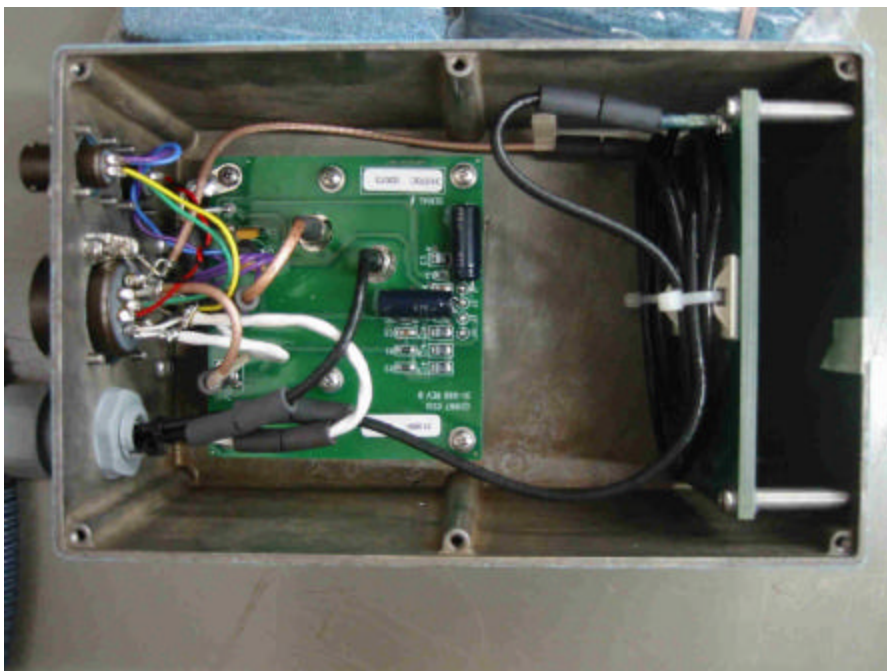


TOP VIEW ASSEMBLY WITH COVER REMOVED FROM ELECTRONICS BOX  
(TOP) AND SKID PLATE ATTACHED TO ANTENNA HEAD (BOTTOM)

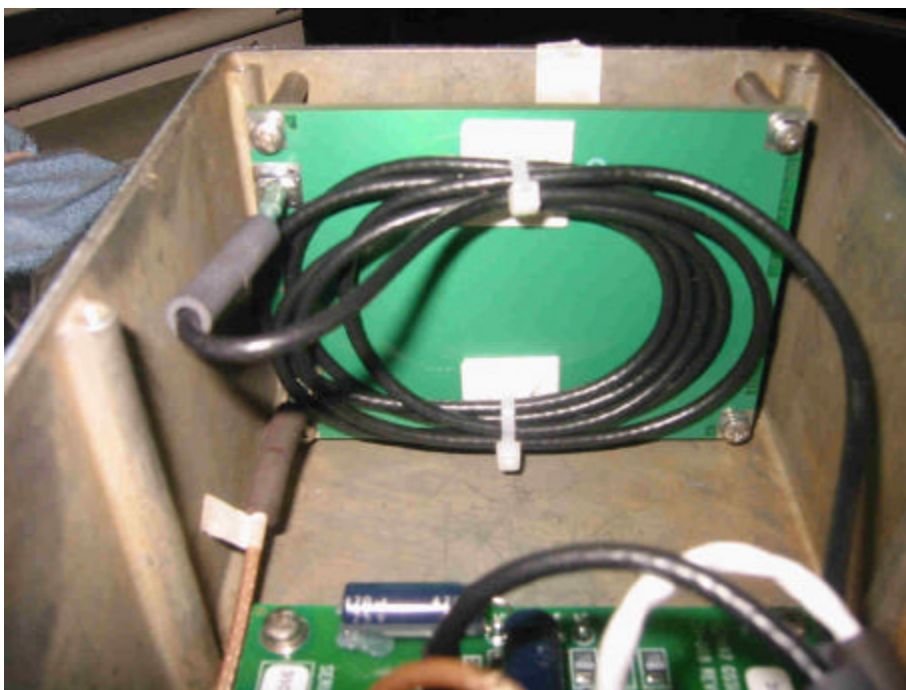


TOP VIEW OF ELECTRONICS WITH BAGGED SHIELDING FOAM

5100 ANTENNA ASSEMBLY  
Internal Photos



TOP VIEW OF ELECTRONICS WITH BAGGED SHIELDING FOAM REMOVED  
AMPLIFIER INTERFACE PCB VISIBLE WITH DELAY LINE PCB TO THE RIGHT.

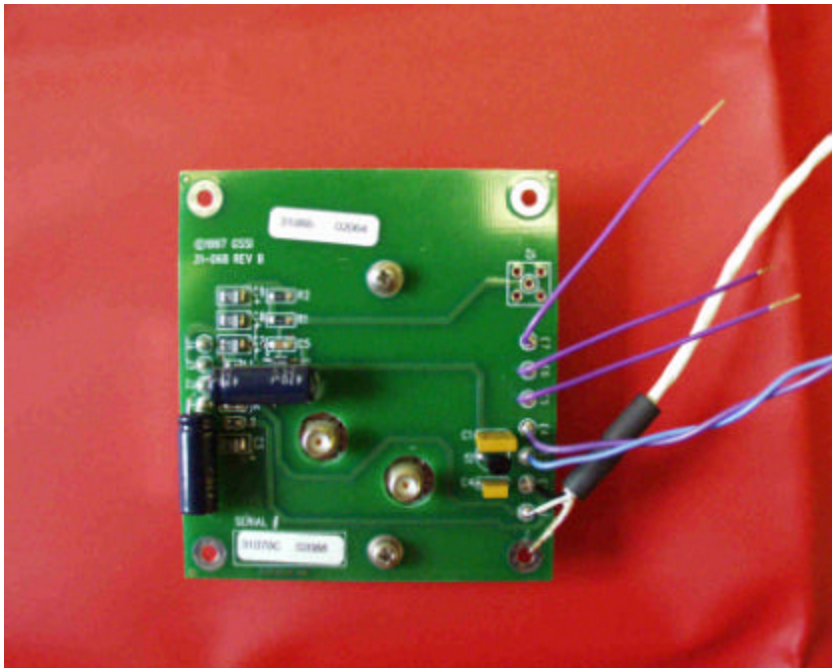


TOP VIEW OF ELECTRONICS DELAY LINE PC BOAD END OF ASSY

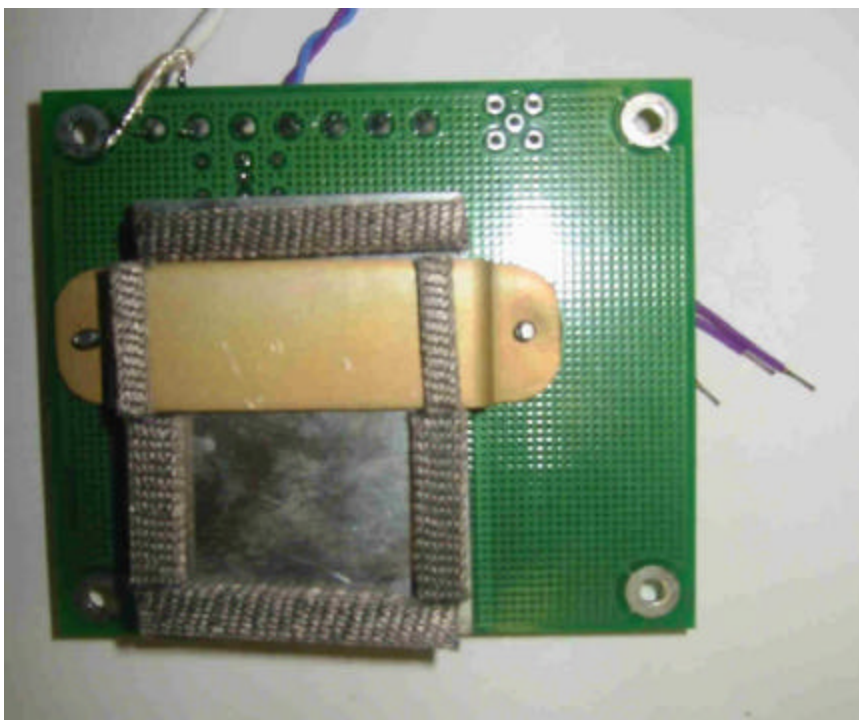


5100 ANTENNA ASSEMBLY  
Internal Photos

1. AMP INTERFACE PC BOARD



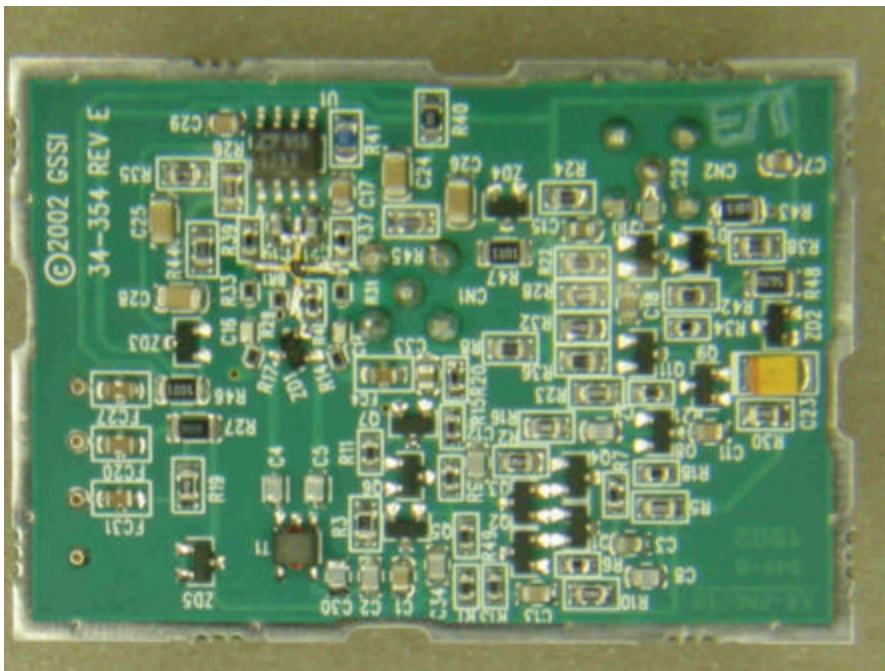
TOP VIEW



BACK VIEW WITH 3 GHZ RECEIVER SAMPLER IN SHIELDING CAN ATTACHED

5100 ANTENNA ASSEMBLY  
Internal Photos

2. 3 GHZ RECEIVER SAMPLER PC BOARD



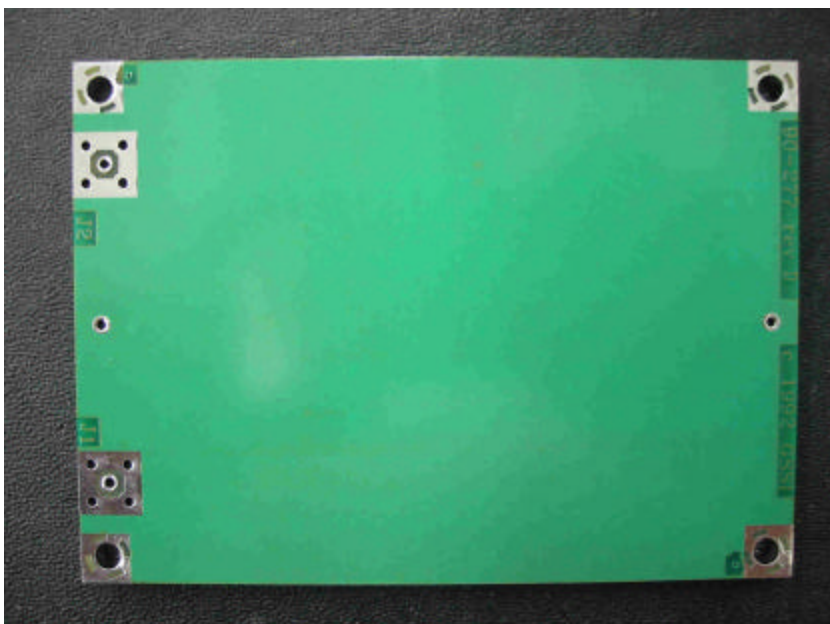
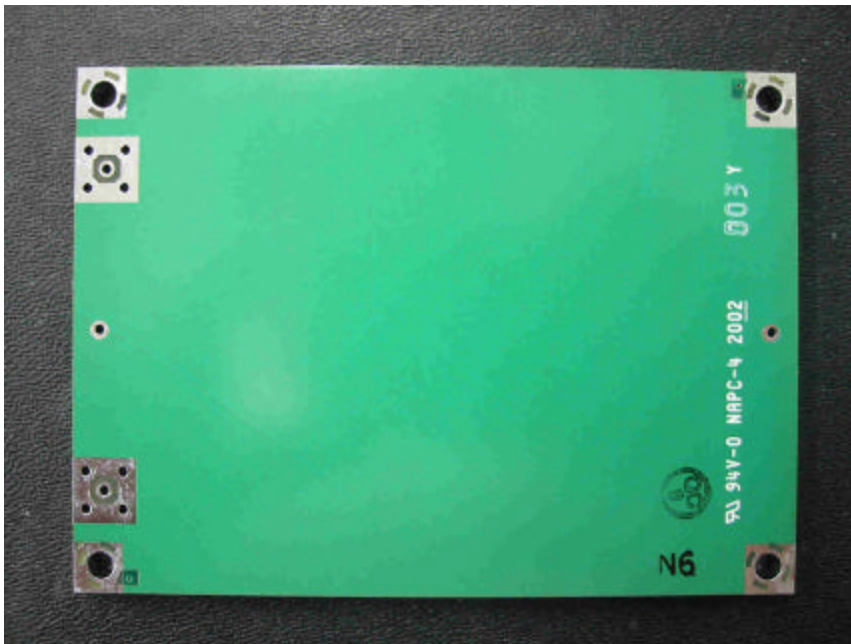
TOP VIEW



BOTTOM VIEW

5100 ANTENNA ASSEMBLY  
Internal Photos

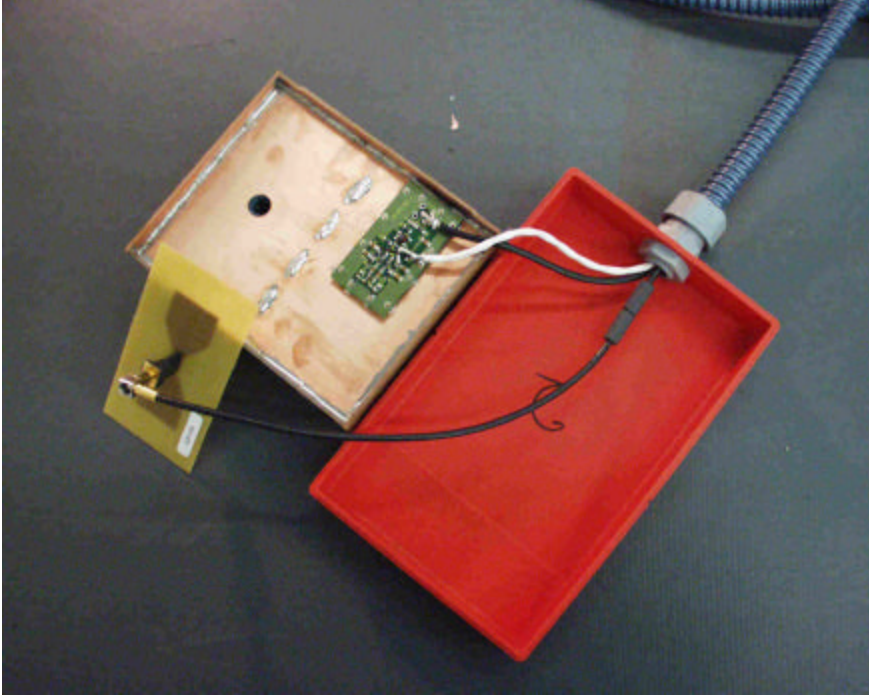
3. DELAY LINE PC BOARD



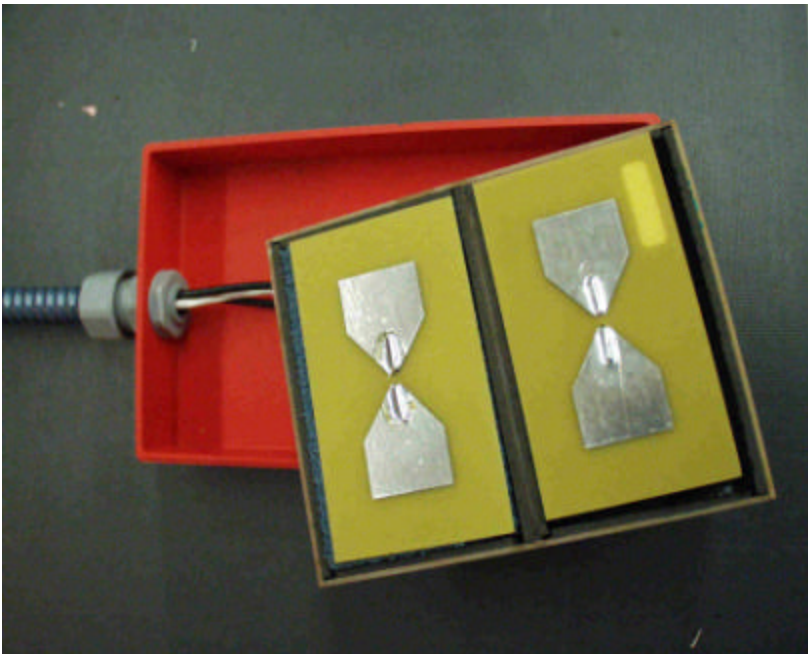


## **5100 ANTENNA HEAD**

see page 1 for assembled view



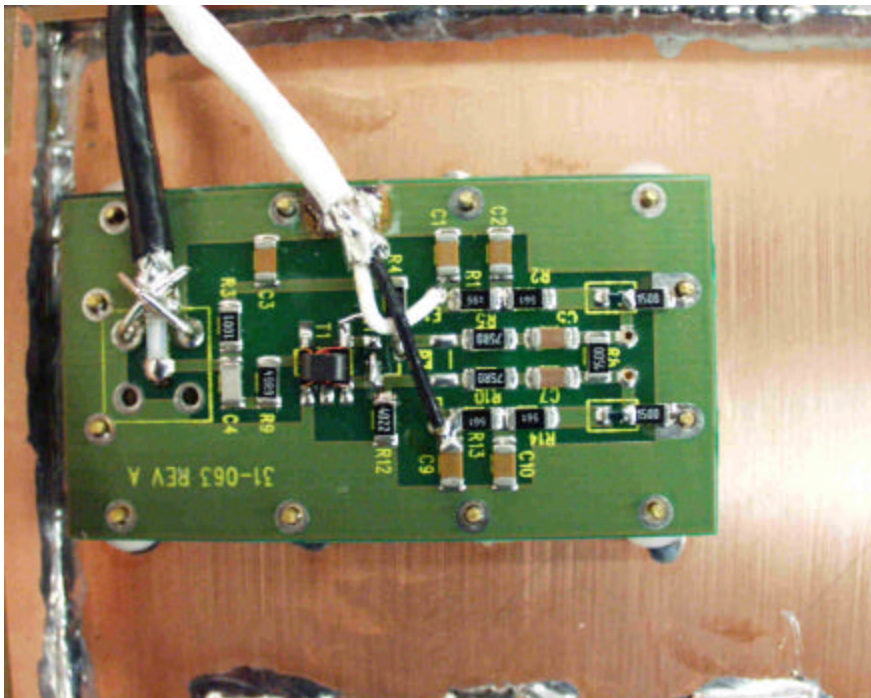
SHOWN FROM LEFT TO RIGHT: FAN WITH BALUN PCB (SHRINK WRAPPED),  
SHIELD WITH TRANSMITTER BOARD MOUNTED AND ENCLOSURE.  
DETAILS FOLLOW.



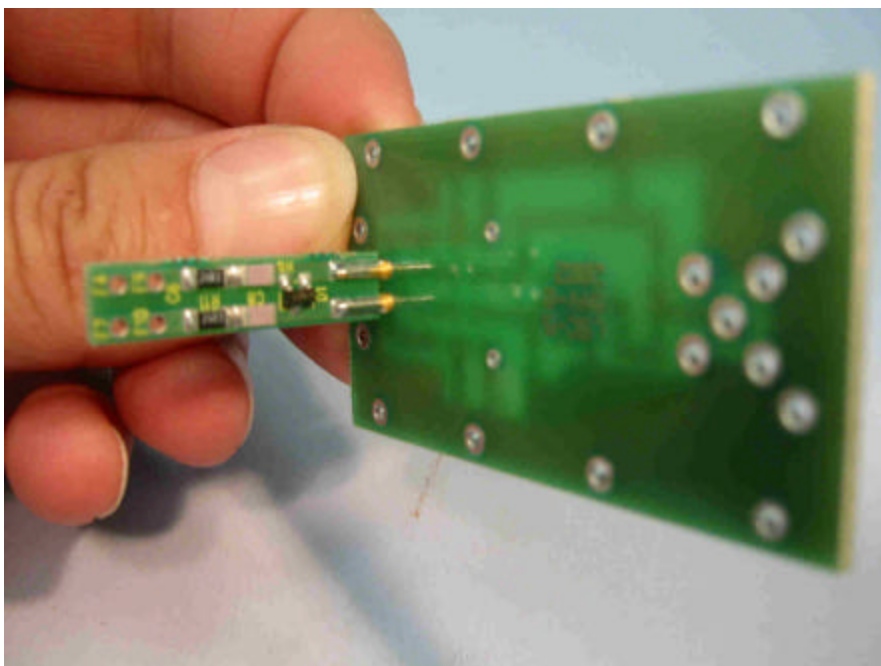
ANTENNA HEAD WITH SHIELD REMOVED AND TURNED OVER TO EXPOSE  
FANS.

5100 ANTENNA ASSEMBLY  
Internal Photos

4. 5100 TRANSMITTER BOARD AS ASSEMBLED



TRANSMITTER BOARD TOP SIDE

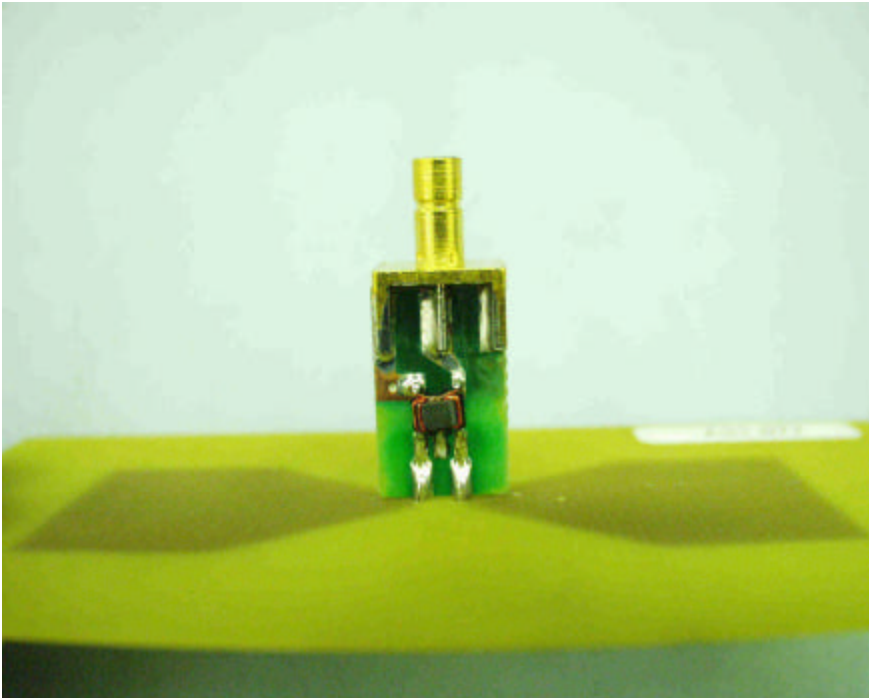


TRANSMITTER BOARD BACKSIDE. SMALL BOARD IS INSERTED INTO FOAM AND ATTACHED TO FAN.



5100 ANTENNA ASSEMBLY  
Internal Photos

5. BALUN PC BOARD



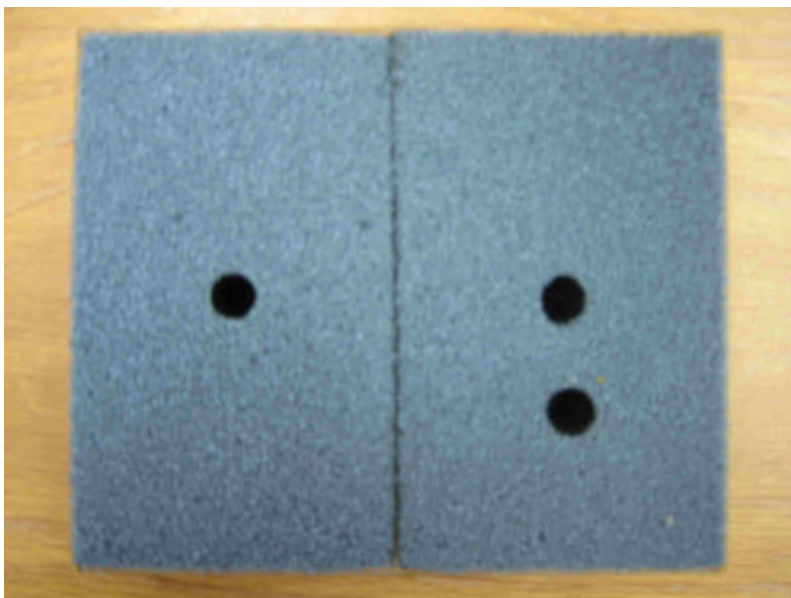
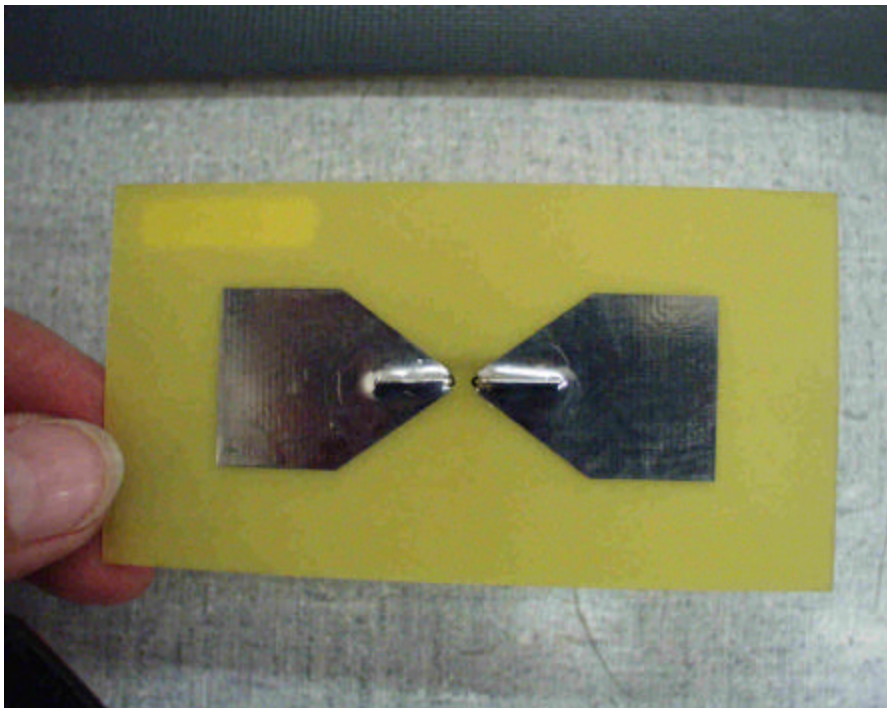
BALUN PC BOARD SHOWN ATTACHED TO FAN BD SHRINK WRAP REMOVED.



BALUN PC BOARD BACK SIDE

5100 ANTENNA ASSEMBLY  
Internal Photos

6. FAN PC BOARD



FOAM PIECES INSTALLED IN SHIELD (NO BOARDS)