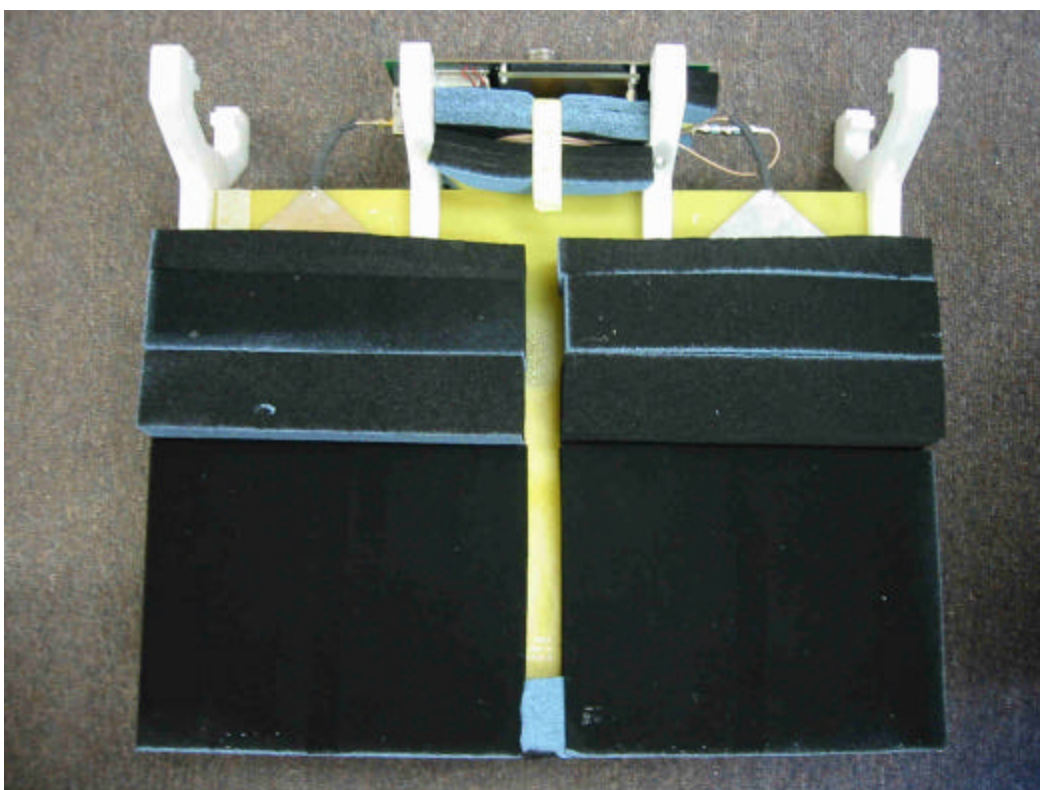
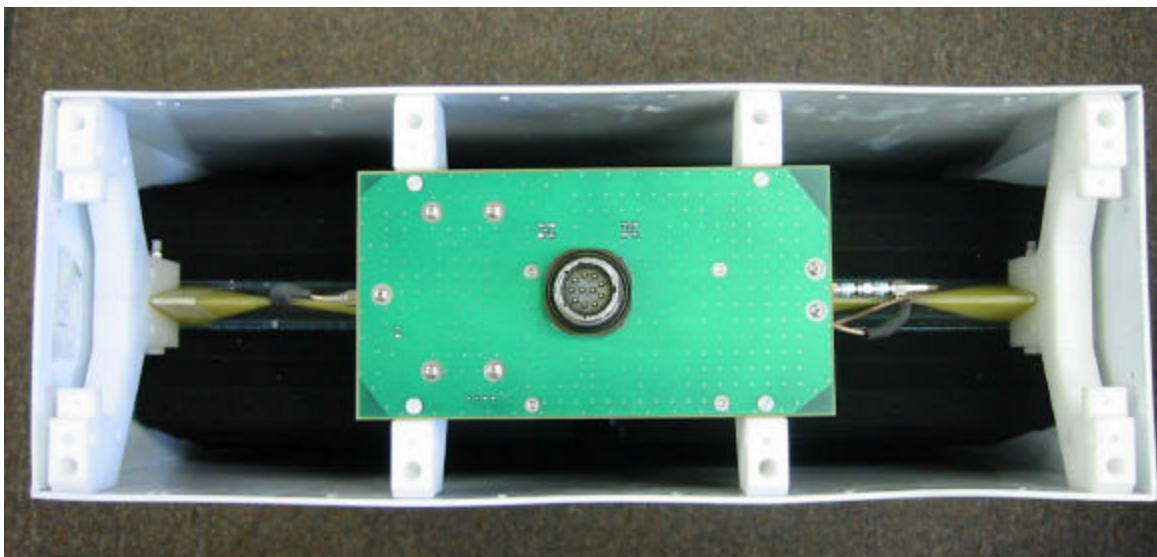
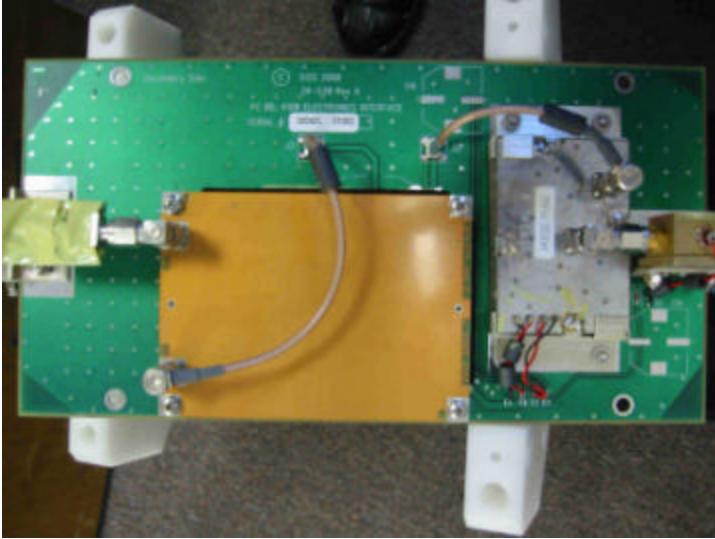


QF74108F ANTENNA INTERNAL PHOTOS

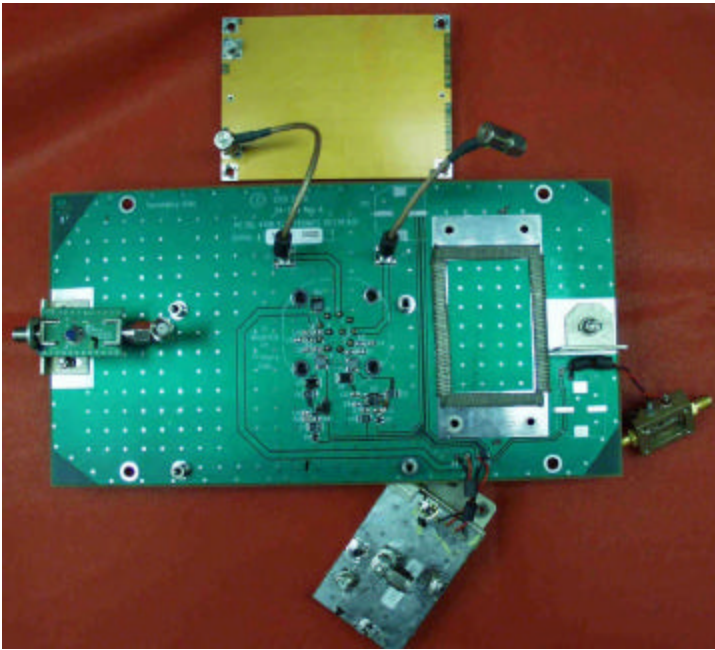


REMOVED FROM CASE
FAN PCB PARTLY VISIBLE

QF74108F ANTENNA INTERNAL PHOTOS



WITH SHIELDING

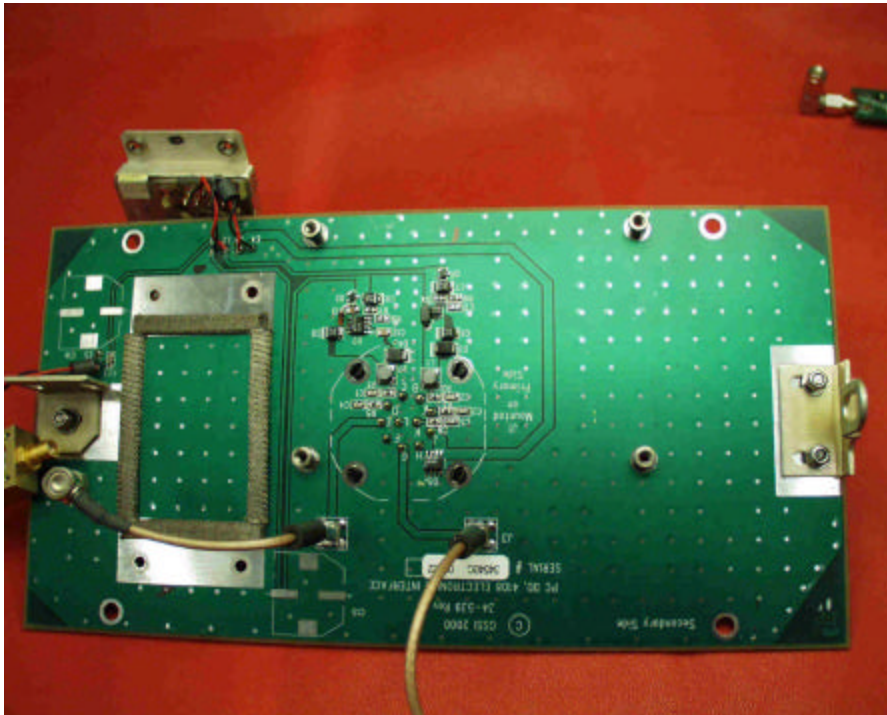


PC BOARDS SHOWN ABOVE:

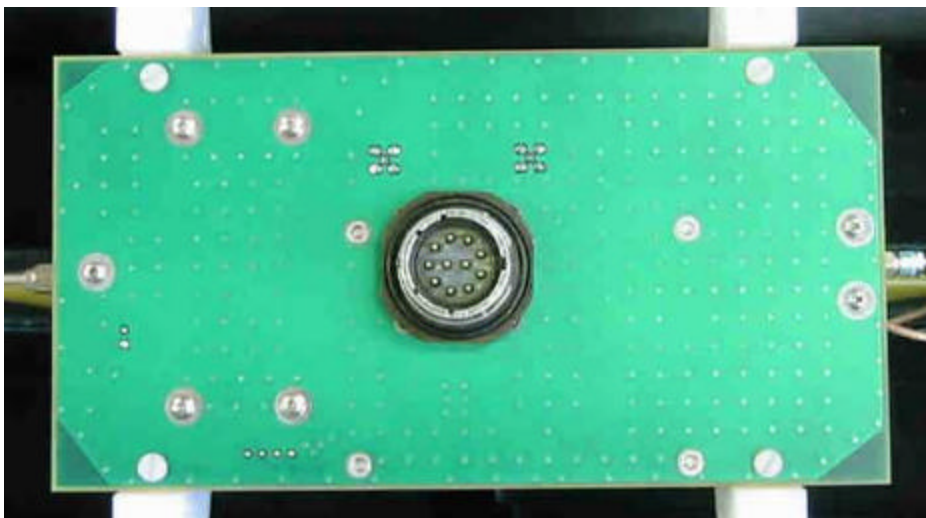
1. ELECTRONICS INTERFACE BOARD (MAIN BOARD)
2. DELAY LINE PCB (TOP)
3. MONOCYCLE GENERATOR (MOUNTED ON LEFT SIDE)
4. RF AMPLIFIER (TO RIGHT OF BOARD)
5. 3GHZ RECEIVER SAMPLER (BOTTOM)
6. FAN PC BOARD (NOT SHOWN)

QF74108F ANTENNA INTERNAL PHOTOS

1. ELECTRONICS INTERFACE BOARD



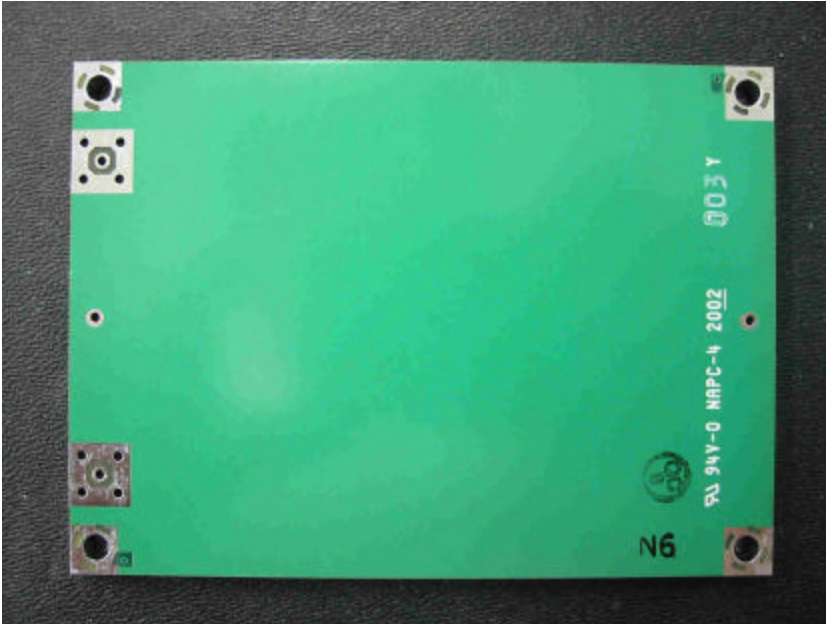
TOP



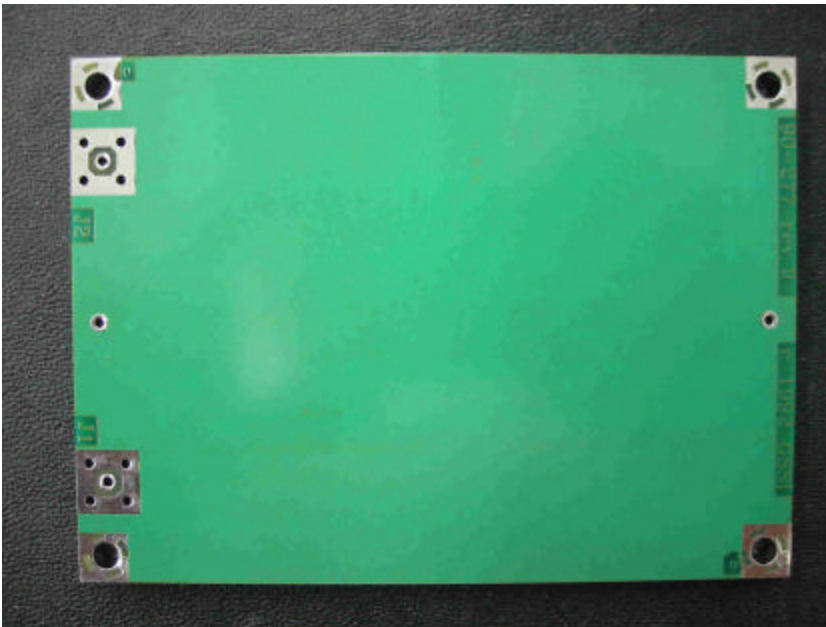
BACK

QF74108F ANTENNA INTERNAL PHOTOS

2. DELAY LINE PC BOARD



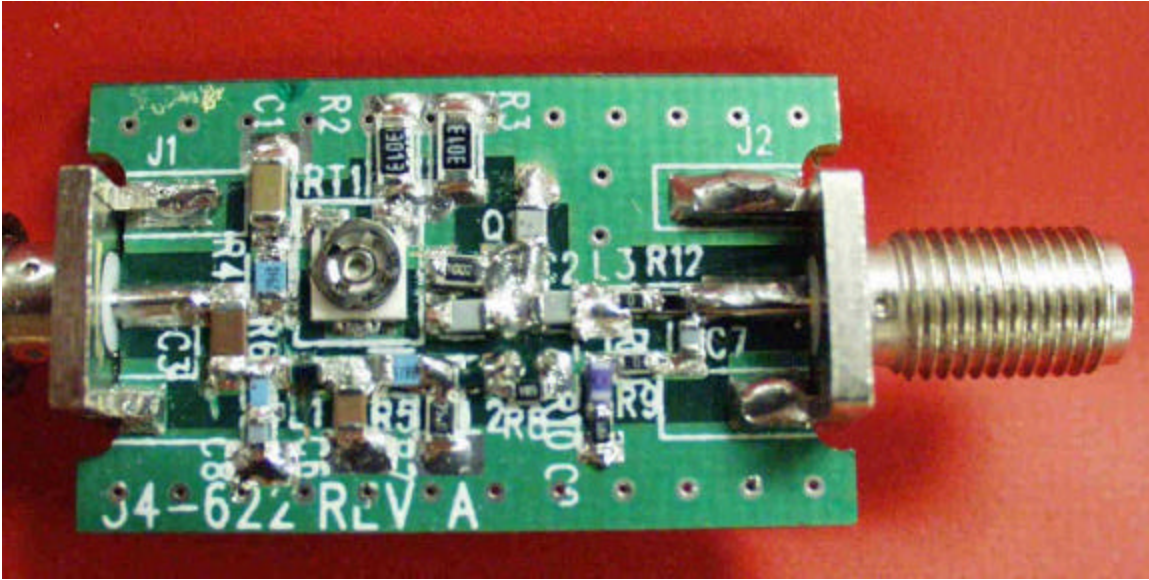
TOP



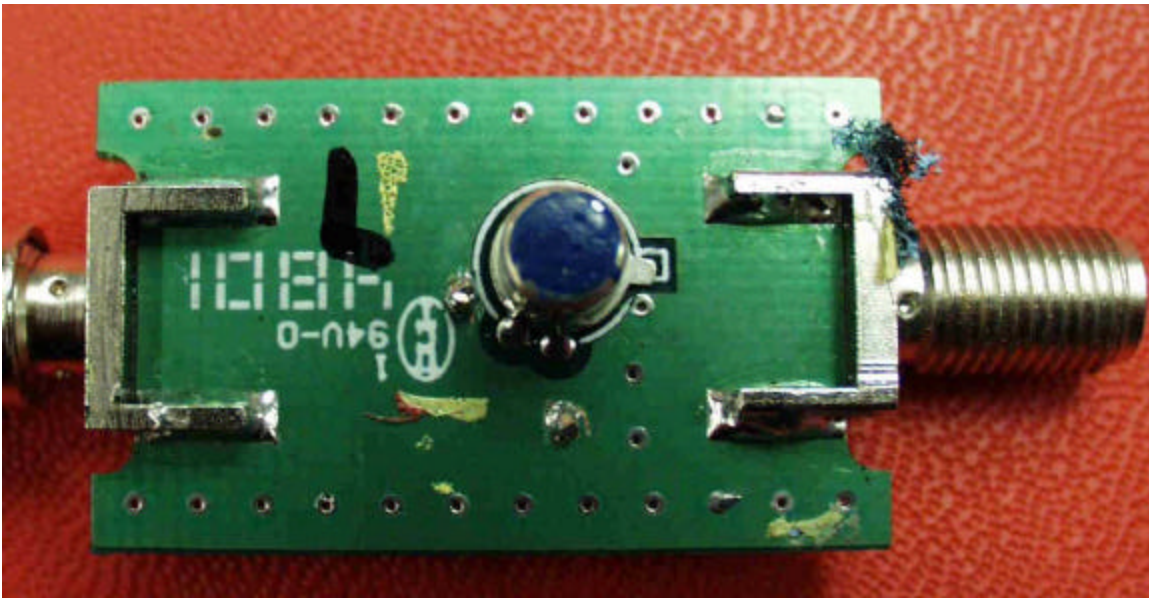
BACK

QF74108F ANTENNA INTERNAL PHOTOS

3. MONOCYCLE GENERATOR



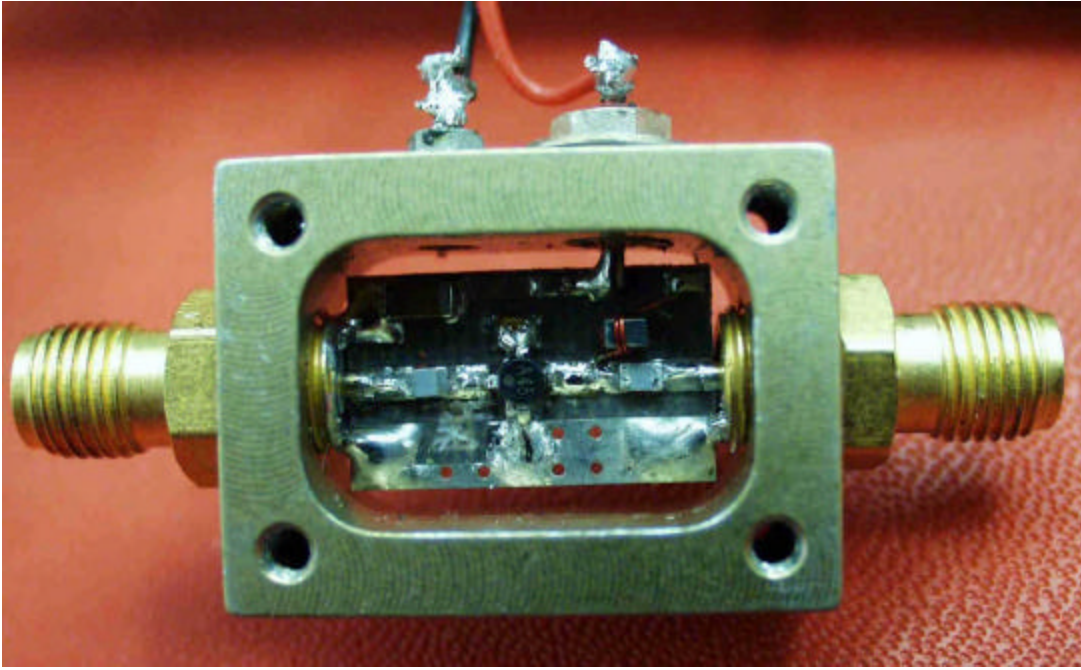
TOP



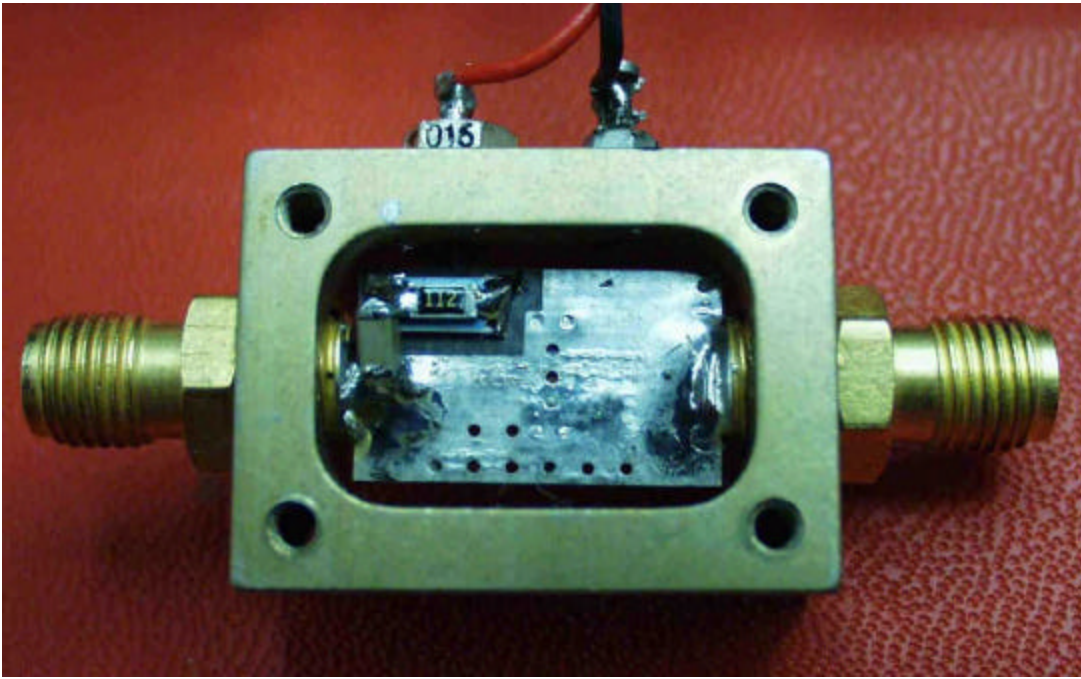
BACK

QF74108F ANTENNA INTERNAL PHOTOS

4. RF AMPLIFIER

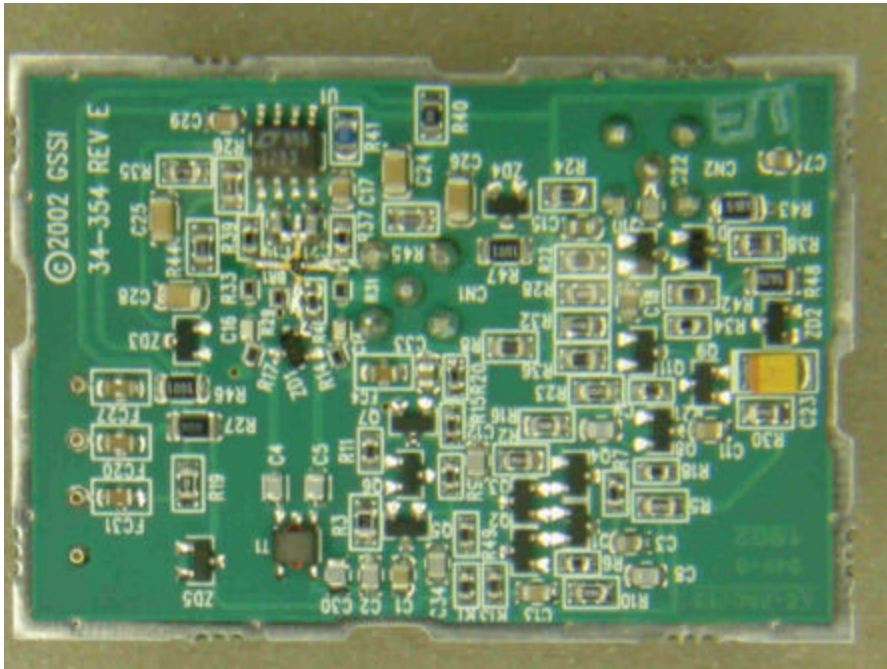


TOP



BACK

5. 3GHZ RECEIVER SAMPLER



TOP



BOTTOM

QF74108F ANTENNA INTERNAL PHOTOS

6. FAN PC BOARD

