

Date: 2009-12-07

Page 1 of 17

No.: MH183589

Applicant (DOL003): Kid Galaxy INC
150 Dow Street, Tower2, Unit 425B Manchester,
NH03101.U.S.A.

Manufacturer: Dongguan Lung Cheong Toys Co., Ltd
Zhou Wu Industrial District, Dong Guan City, Guang Dong
Province, China

Description of Sample(s): Submitted samples(s) said to be
Product: Mini Slick Drifter-orange
Brand Name: World of Wheels
Model Number: 10170
FCC ID: QEADRIFTER27T

Date Sample(s) Received: 2009-11-23

Date Tested: 2009-11-25, 2009-11-26

Investigation Requested: Perform ElectroMagnetic Interference measurement in
accordance with FCC 47CFR [Codes of Federal Regulations]
Part 15: 2008 and ANSI C63.4:2003 for FCC Certification.

Conclusion(s): The submitted product COMPLIED with the requirements of
Federal Communications Commission [FCC] Rules and
Regulations Part 15. The tests were performed in accordance
with the standards described above and on Section 2.2 in this
Test Report.

Remark(s): ----



Dr. LEE Kam Chuen,
Authorized Signatory
ElectroMagnetic Compatibility Department
For and on behalf of
The Hong Kong Standards and Testing Centre Ltd.

Date: 2009-12-07

Page 2 of 17

No.: MH183589

CONTENT:

Cover	Page 1 of 17	
Content	Page 2-3 of 17	
<u>1.0</u>	<u>General Details</u>	
1.1	Test Laboratory	Page 4 of 17
1.2	Applicant Details Applicant Manufacturer	Page 4 of 17
1.3	Equipment Under Test [EUT] Description of EUT operation	Page 5 of 17
1.4	Date of Order	Page 5 of 17
1.5	Submitted Sample(s)	Page 5 of 17
1.6	Test Duration	Page 5 of 17
1.7	Country of Origin	Page 5 of 17
<u>2.0</u>	<u>Technical Details</u>	
2.1	Investigations Requested	Page 6 of 17
2.2	Test Standards and Results Summary	Page 6 of 17
<u>3.0</u>	<u>Test Results</u>	
3.1	Emission	Page 7-9 of 17
3.2	Bandwidth Measurement	Page 10-11 of 17

Date: 2009-12-07

Page 3 of 17

No.: MH183589

Appendix A

List of Measurement Equipment

Page 12 of 17

Appendix B

Duty Cycle Correction During 100 msec

Page 13-15 of 17

Appendix C

Photographs

Page 16-17 of 17

Date: 2009-12-07

Page 4 of 17

No.: MH183589

1.0 General Details

1.1 Test Laboratory

The Hong Kong Standards and Testing Centre Ltd.
EMC Laboratory
10 Dai Wang Street, Taipo Industrial Estate
New Territories, Hong Kong

Telephone: 852 2666 1888
Fax: 852 2664 4353

1.2 Applicant Details

Applicant

Kid Galaxy INC
150 Dow Street, Tower2, Unit 425B Manchester, NH03101.U.S.A.

Manufacturer

Dongguan Lung Cheong Toys Co., Ltd
Zhou Wu Industrial District, Dong Guan City, Guang Dong Province, China

Date: 2009-12-07

Page 5 of 17

No.: MH183589

**1.3 Equipment Under Test [EUT]
Description of Sample(s)**

Product:	Mini Slick Drifter-orange
Manufacturer:	Dongguan Lung Cheong Toys Co., Ltd
Brand Name:	World of Wheels
Model Number:	10170
Rating:	3Vd.c("AAA" size battery x 2)

1.3.1 Description of EUT Operation

The Equipment Under Test (EUT) is a Kid Galaxy INC, Mini Slick Drifter-orange. The EUT is a transmitter of radio control toy. The transmitter was operating with joystick, the EUT continues to transmit while one of the joystick is being pressed, It is pulse transmitter, Modulation by IC, and type is pulses modulation.

1.4 Date of Order

2009-11-23

1.5 Submitted Sample(s):

2 Samples

1.6 Test Duration

2009-11-25, 2009-11-26

1.7 Country of Origin

China

Date: 2009-12-07

Page 6 of 17

No.: MH183589

2.0 Technical Details

2.1 Investigations Requested

Perform ElectroMagnetic Interference measurement in accordance with FCC 47CFR [Codes of Federal Regulations] Part 15: 2008 and ANSI C63.4:2003 for FCC Certification.

2.2 Test Standards and Results Summary Tables

EMISSION Results Summary						
Test Condition	Test Requirement	Test Method	Class / Severity	Test Result		
				Pass	Failed	N/A
Field Strength of Fundamental Emissions & Spurious Emissions	FCC 47CFR 15.227	ANSI C63.4:2003	N/A	<input checked="" type="checkbox"/>	<input type="checkbox"/>	<input type="checkbox"/>
Radiated Emissions	FCC 47CFR 15.209	ANSI C63.4:2003	N/A	<input checked="" type="checkbox"/>	<input type="checkbox"/>	<input type="checkbox"/>

Note: N/A - Not Applicable

3.0 Test Results

3.1 Emission

3.1.1 Radiated Emissions (30 – 1000MHz)

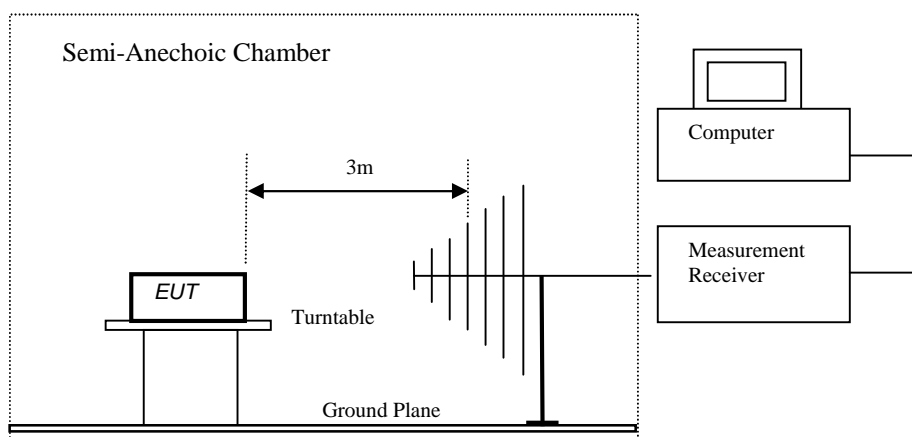
Test Requirement: FCC 47CFR 15.227
Test Method: ANSI C63.4:2003
Test Date: 2009-11-26
Mode of Operation: Tx mode

Test Method:

The sample was placed 0.8m above the ground plane of semi-anechoic chamber*. Measurements in both horizontal and vertical polarities were performed. During the test, each emission was maximized by: having the EUT continuously working, investigated all operating modes, rotated about all 3 axis (X, Y & Z) and considered typical configuration to obtain worst position, manipulating interconnecting cables, rotating turntable, varying antenna height from 1m to 4m in both horizontal and vertical polarizations. The emissions worst-case are shown in Test Results of the following pages.

*: Semi-anechoic chamber located on the STC (Dongguan) Company Ltd. 68 Fumin Nan Road, Dalang, Dongguan, Guangdong, PRC with a metal ground plane filed with the FCC pursuant to section 2.948 of the FCC rules, with Registration Number: 629686.

Test Setup:



Limits for Field Strength of Fundamental Emissions [FCC 47CFR 15.227]:

Frequency Range of Fundamental [MHz]	Field Strength of Fundamental Emission [Peak] [μV/m]	Field Strength of Fundamental Emission [Average] [μV/m]
26.96-27.28	100,000	10,000

Results of Tx mode: PASS

Field Strength of Fundamental Emissions Peak Value						
Frequency MHz	Measured Level @3m dBμV	Correction Factor dB/m	Field Strength dBμV/m	Field Strength μV/m	Limit @3m μV/m	E-Field Polarity
27.145	47.10	18.6	65.7	1,927.5	100,000	Vertical

Field Strength of Fundamental Emissions Average Value							
Frequency MHz	Measured Level @3m dBμV	Adjusted by Duty Cycle dB	Correction Factor dB/m	Field Strength dBμV/m	Field Strength μV/m	Limit @3m μV/m	E-Field Polarity
27.145	43.0	-4.1	18.6	61.6	1,202.3	10,000	Vertical

According to FCC 47CFR15.35, the limit on the radio frequency emissions as measured using instrumentation with a peak detector function, corresponding to 20dB above the maximum permitted average limit for the frequency being investigated unless a different peak emission limit is otherwise specified in the rules.

Remarks:

Correction Factor includes Antenna Factor and Cable Attenuation.
 Calculated measurement uncertainty: 30MHz to 1GHz 5.1dB

Limits for Radiated Emissions [FCC 47 CFR 15.209]:

Frequency Range [MHz]	Quasi-Peak Limits [$\mu\text{V/m}$]
30-88	100
88-216	150
216-960	200
Above960	500

The emission limits shown in the above table are based on measurement employing a CISPR quasi-peak detector and above 1000MHz are based on measurements employing an average detector.

Results of Tx mode: PASS

Radiated Emissions Quasi-Peak						
Frequency MHz	Measured Level @3m dB μV	Correction Factor dB/m	Field Strength dB $\mu\text{V/m}$	Field Strength $\mu\text{V/m}$	Limit @3m $\mu\text{V/m}$	E-Field Polarity
54.29	< 1.0	9.2	< 10.2	< 3.2	100	Vertical
81.44	< 1.0	9.3	< 10.3	< 3.3	100	Vertical
108.58	< 1.0	11.9	< 12.9	< 4.4	150	Vertical
135.73	< 1.0	14.0	< 15.0	< 5.6	150	Vertical
162.87	< 1.0	14.5	< 15.5	< 6.0	150	Vertical
190.02	< 1.0	17.2	< 18.2	< 8.1	150	Vertical
217.16	< 1.0	17.3	< 18.3	< 8.2	200	Vertical
244.31	< 1.0	19.1	< 20.1	< 10.1	200	Vertical
271.45	< 1.0	20.6	< 21.6	< 12.0	200	Vertical

Remarks:

No further spurious emissions found between lowest internal frequency and 30MHz.

Correction Factor includes Antenna Factor and Cable Attenuation.

Calculated measurement uncertainty : 30MHz to 1GHz 5.1dB

Date: 2009-12-07

Page 10 of 17

No.: MH183589

3.2 20dB Bandwidth of Fundamental Emission

Test Requirement:	FCC 47 CFR 15.227
Test Method:	ANSI C63.4:2003 (Section 13.1.7)
Test Date:	2009-11-25
Mode of Operation:	Tx mode

Test Method:

The bandwidth is measured at an amplitude level reduced from the reference level by a specified ratio. The reference level is the level of the highest amplitude signal observed from the transmitter at the fundamental frequency. Once the reference level is established, the equipment is conditioned with typical modulating signal to produce the worst-case (i.e. the widest) bandwidth.

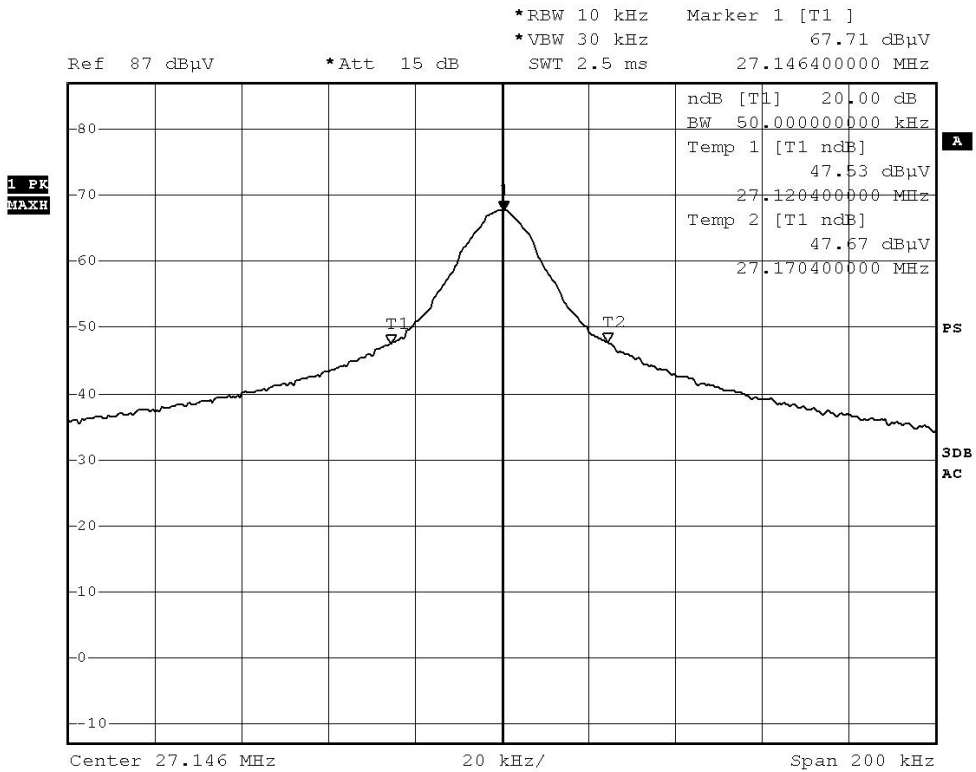
Test Setup:

As Test Setup of clause 3.1.1 in this test report.

Limits for 20dB Bandwidth of Fundamental Emission:

Frequency Range [MHz]	20dB Bandwidth [KHz]	FCC Limits [MHz]
27.146	50.00	within 26.96-27.28

20dB Bandwidth of Fundamental Emission



Date: 2009-12-07

Page 12 of 17

No.: MH183589

Appendix A

List of Measurement Equipment

Radiated Emission

EQP NO.	DESCRIPTION	MANUFACTURER	MODEL NO.	SERIAL NO.	LAST CAL	DUE CAL
EM215	MULTIDEVICE CONTROLLER	EMCO	2090	00024676	N/A	N/A
EM216	MINI MAST SYSTEM	EMCO	2075	00026842	N/A	N/A
EM217	ELECTRIC POWERED TURNTABLE	EMCO	2088	00029144	N/A	N/A
EM218	ANECHOIC CHAMBER	ETS-Linggren	FACT-3	--	2008/12/01	2011/12/01
EM083	STCOATS	--	--	--	2008/12/08	2011/12/08
EM174	BICONILOG ANTENNA	EMCO	3142B	1671	2008/01/24	2010/01/24
EM194	BICONILOG	EMCO	3142B	1795	2008/09/08	2010/09/08
EM229	EMI Test Receiver	R&S	ESIB40	100248	2009/09/27	2010/09/27
EM022	LOOP ANTENNA	EMCO	6502	1189-2424	2009/07/26	2011/07/26

Remarks:-

CM Corrective Maintenance
N/A Not Applicable or Not Available
TBD To Be Determined

Appendix B

Duty Cycle Correction During 100msec

Each function key sends a different series of characters, but each packet period (100msec) never exceeds a series of 20 long pulses (1.68msec) and 48 short pulses (0.6msec). Assuming any combination of short and long pulses may be obtained due to encoding the worst case transmit duty cycle would be considered $(20 \times 1.68 \text{ msec}) + (48 \times 0.6 \text{ msec})$ per 100msec = -4.1dB duty cycle. Figure A through C show the characteristics of the pulse train for one of these functions.

Remarks:

Duty Cycle Correction = -4.1dB

The following figures [Figure A to Figure C] show the characteristics of the pulse train for one of these functions.

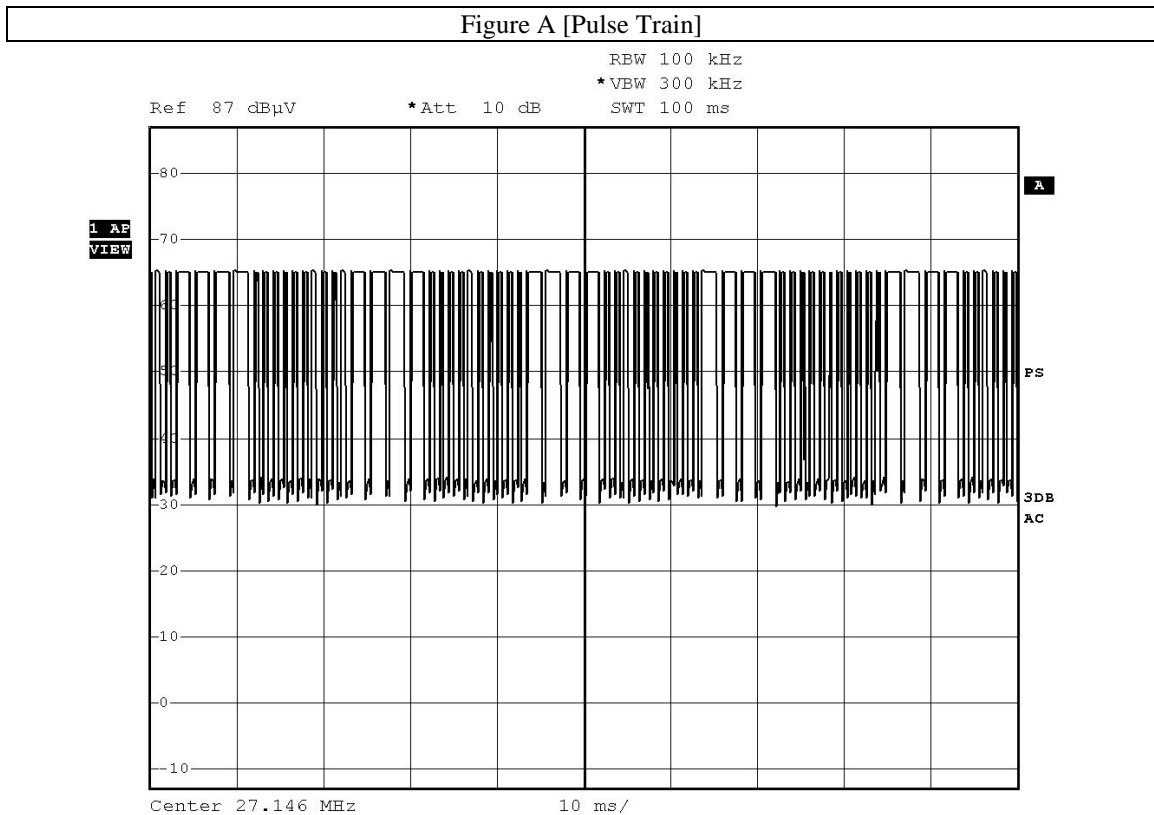


Figure B [Long Pulse]

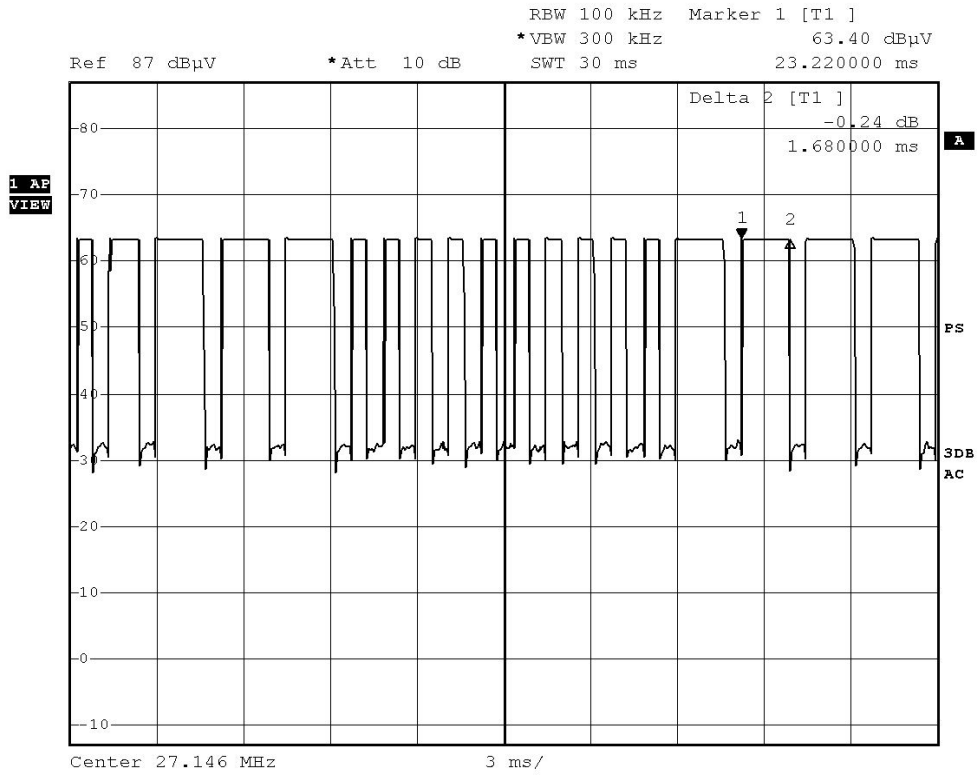
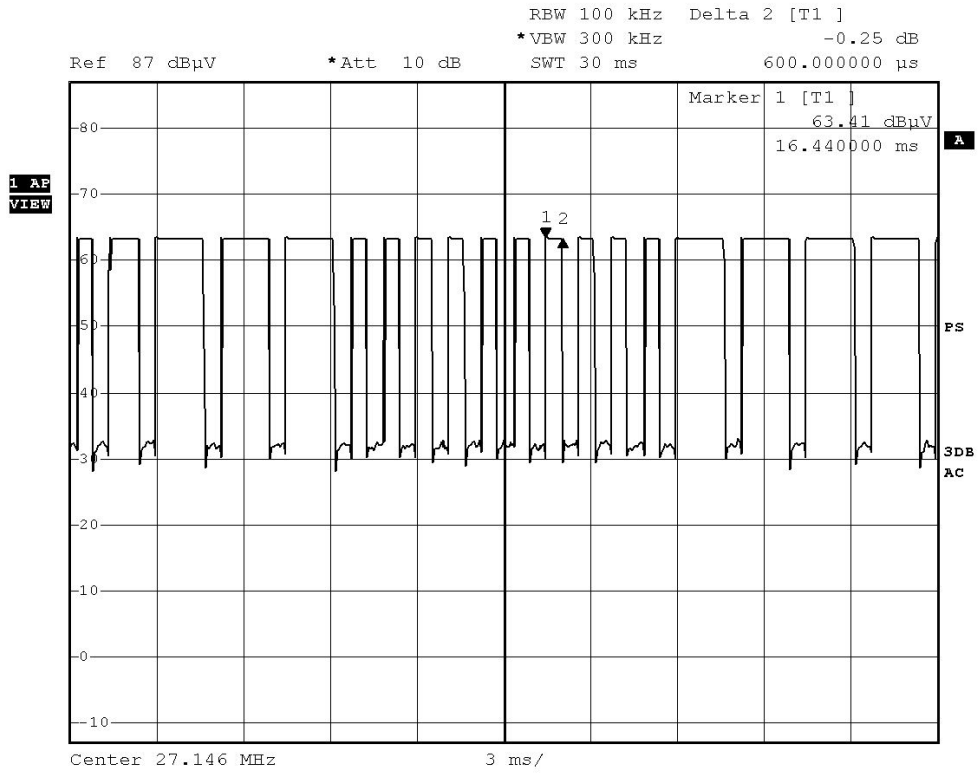


Figure C [Short Pulse]



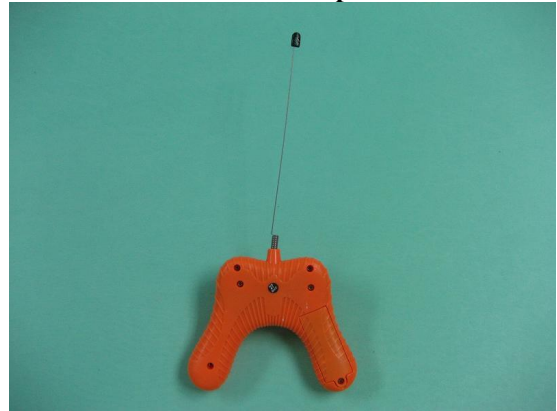
Appendix C

Photographs of EUT

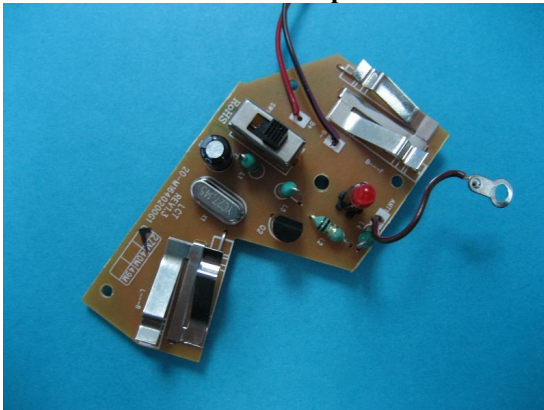
Front View of the product



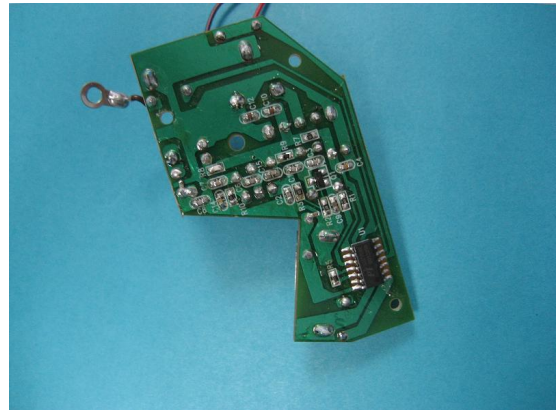
Rear View of the product



Inner Circuit Top View



Inner Circuit Bottom View



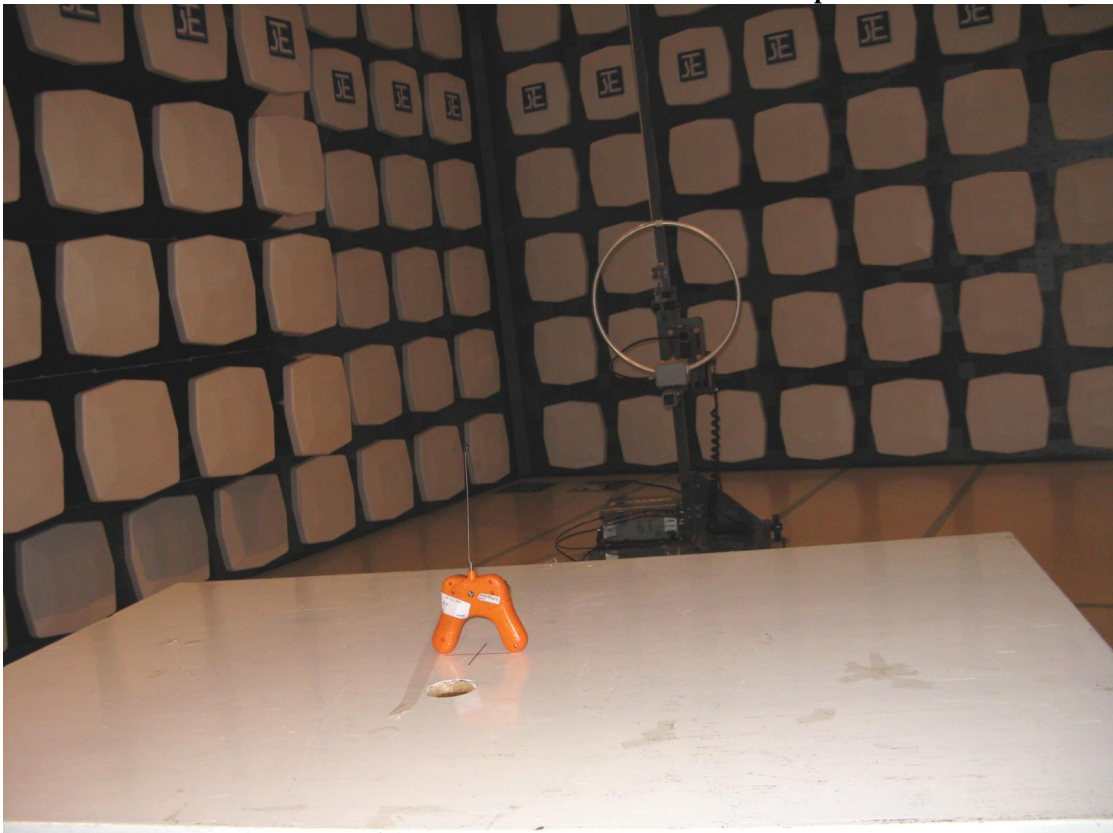
Date: 2009-12-07

Page 17 of 17

No.: MH183589

Photographs of EUT

Measurement of Radiated Emission Test Set Up



******* End of Test Report *******