

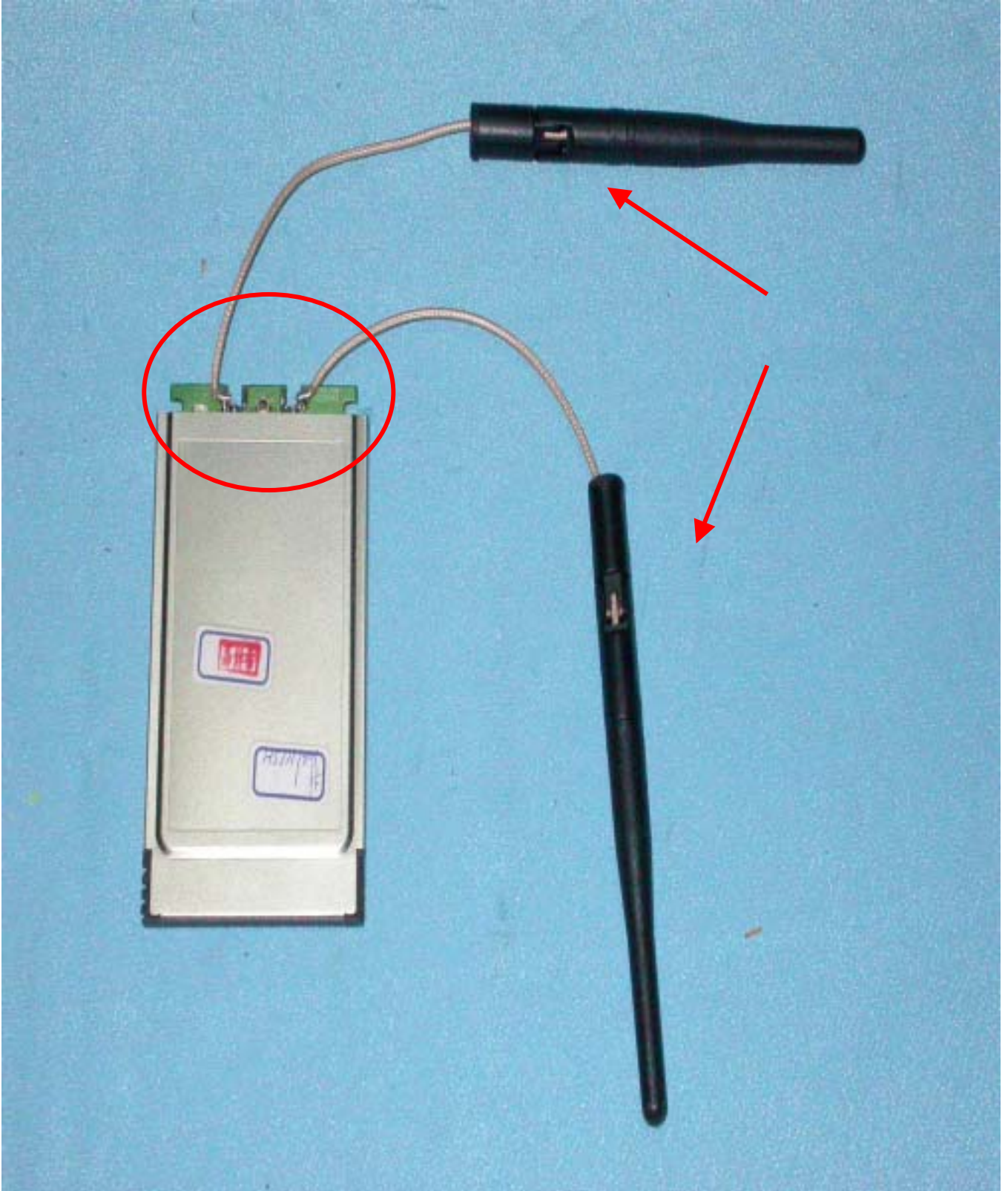
Class II change apply for WN-111SH (From WN112SH FCC ID: QDWWN112SH)

There are two difference in this case:

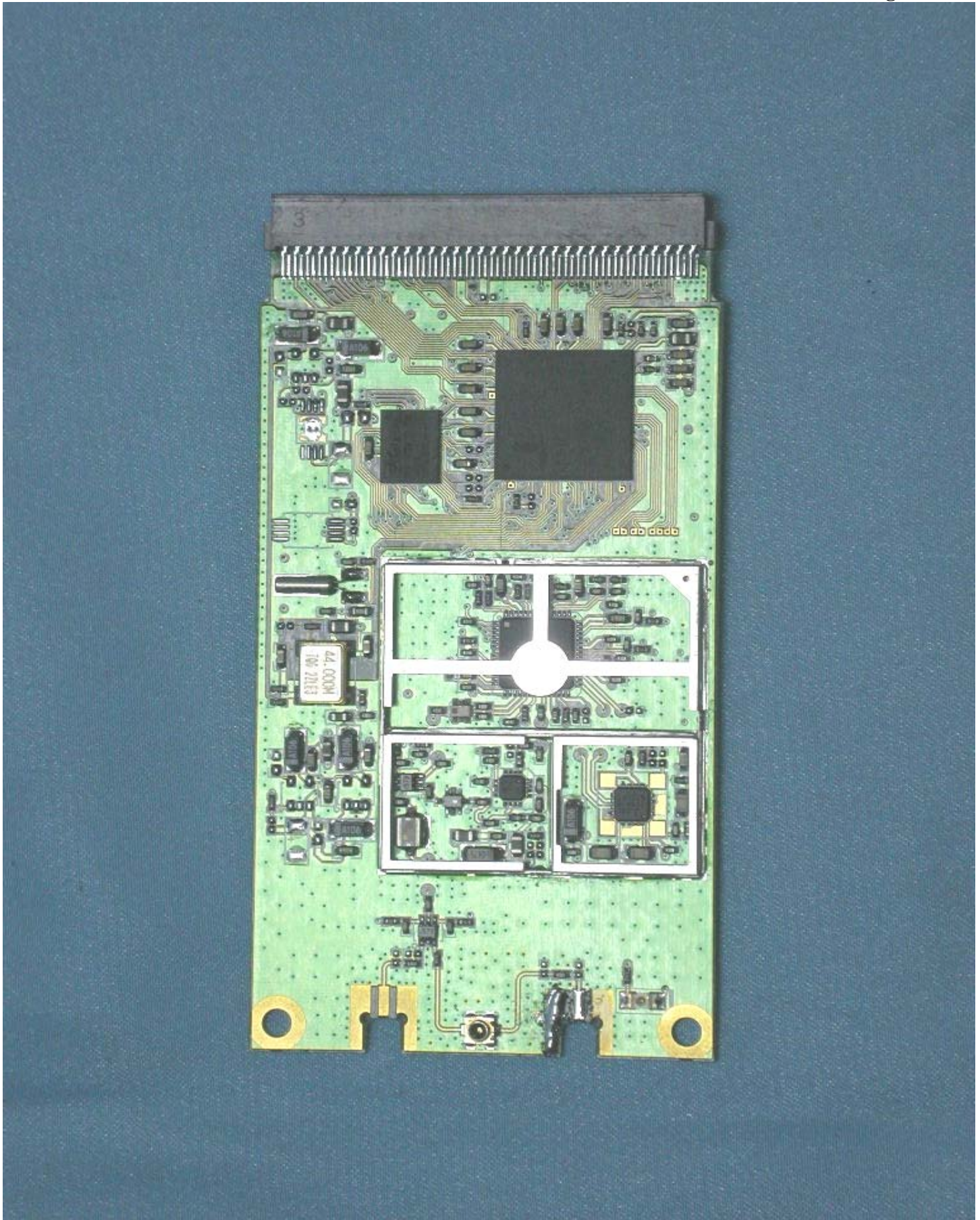
- (1) The antenna gain is 1.9dBi.
- (2) The PCB board outline is difference:

Difference 1—The PCB board is short than original one.

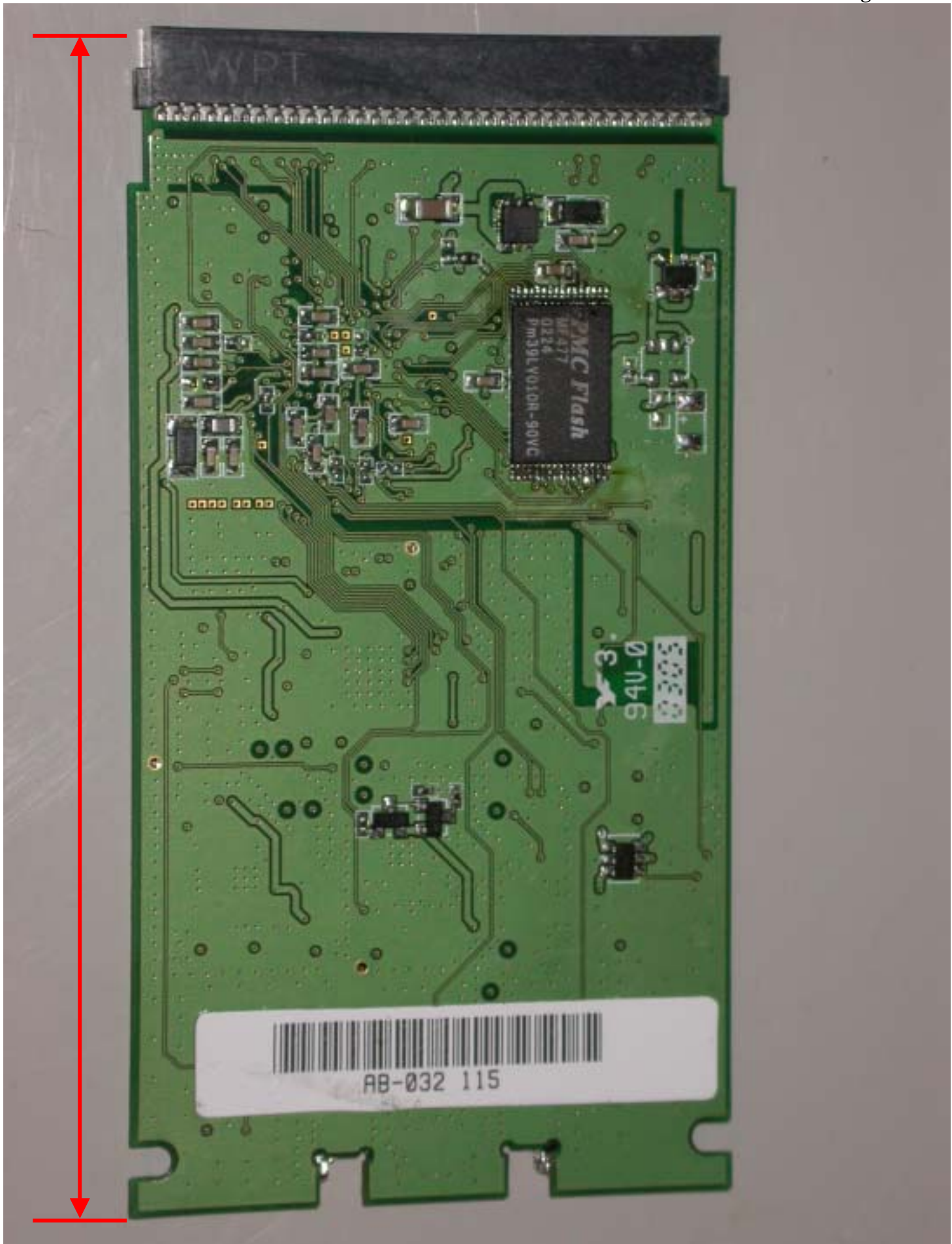
Difference 2—There are two cavities on terminal of PCB board.



The difference Internal Photo of **Original** :



The difference Internal Photo of Class II change:



The difference Internal Photo of Class II change:

