



CPE ASSEMBLY PROCEDURE

P/N 10-0018

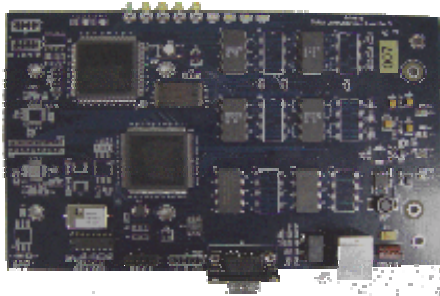
I. Components



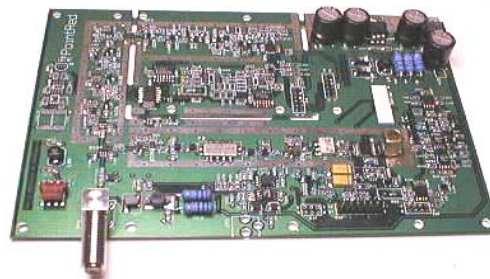
CPE Housing Frame (1)
P/N 02-0011



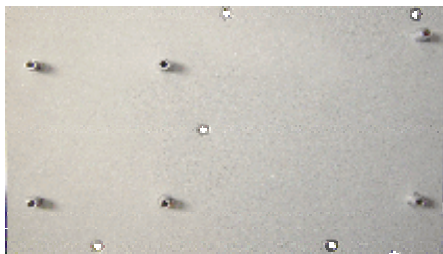
CPE Housing Lid (1)
P/N 02-0003



Digital Board (1)
P/N 09-0040-01



Modem Board (1)
P/N 09-0001



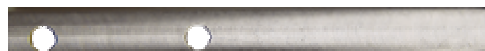
CPE Shield
P/N 02-0010



Screw A(5) B(3) C(8) D(4) Nut (1) Washer (1)



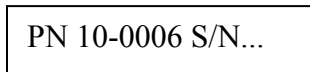
7 x 2 Pin Ribbon Cable (1)
P/N 02-0007



Heat Sink (1)
P/N 00-0015



4 x 1 Pin Power Cable (1)
P/N 02-0006



Label
P/N 00-0014



Rubber Feet (4)
P/N 00-0025

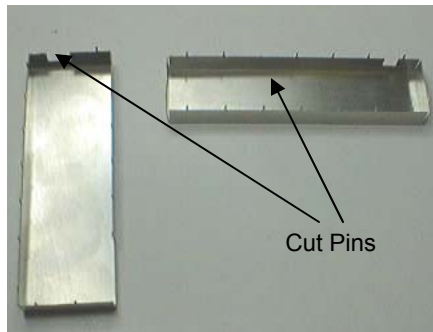


Small Shield (1)
P/N 02-0019



Large Shield (1)
P/N 02-0020

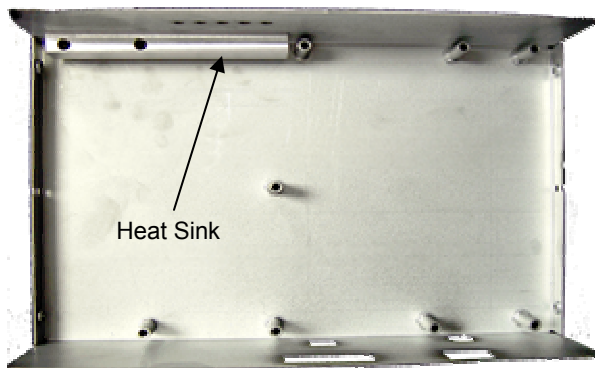
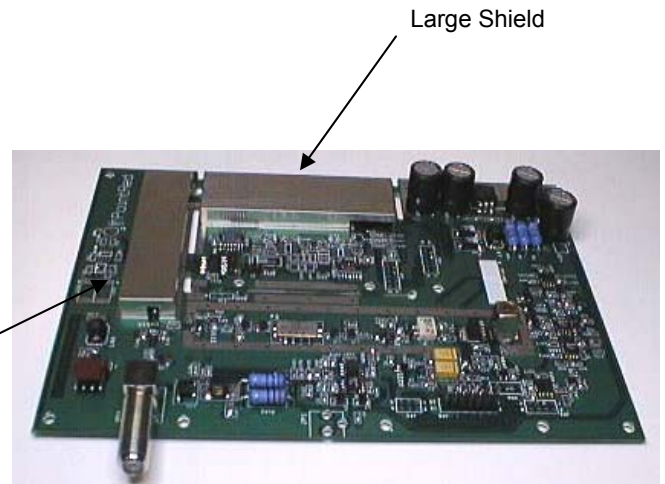
II. Assembly Steps



2. After the successful testing of the Modem Board, solder the small and large shield on to the Modem Board as shown in picture.

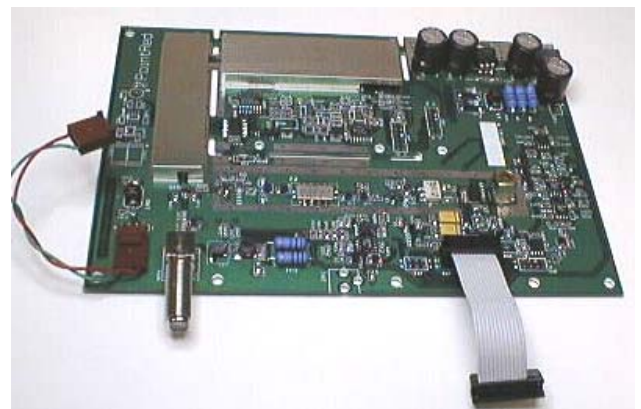
Small Shield

1. Cut the pin off both small and large shields as shown in picture.

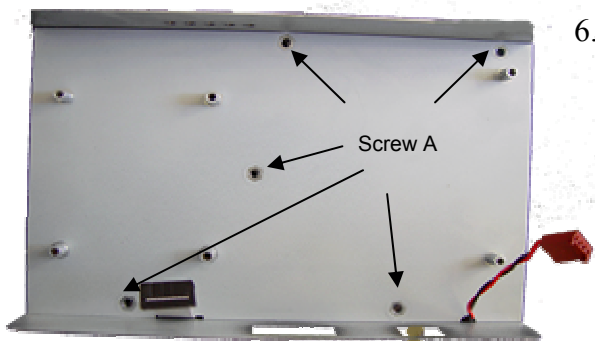
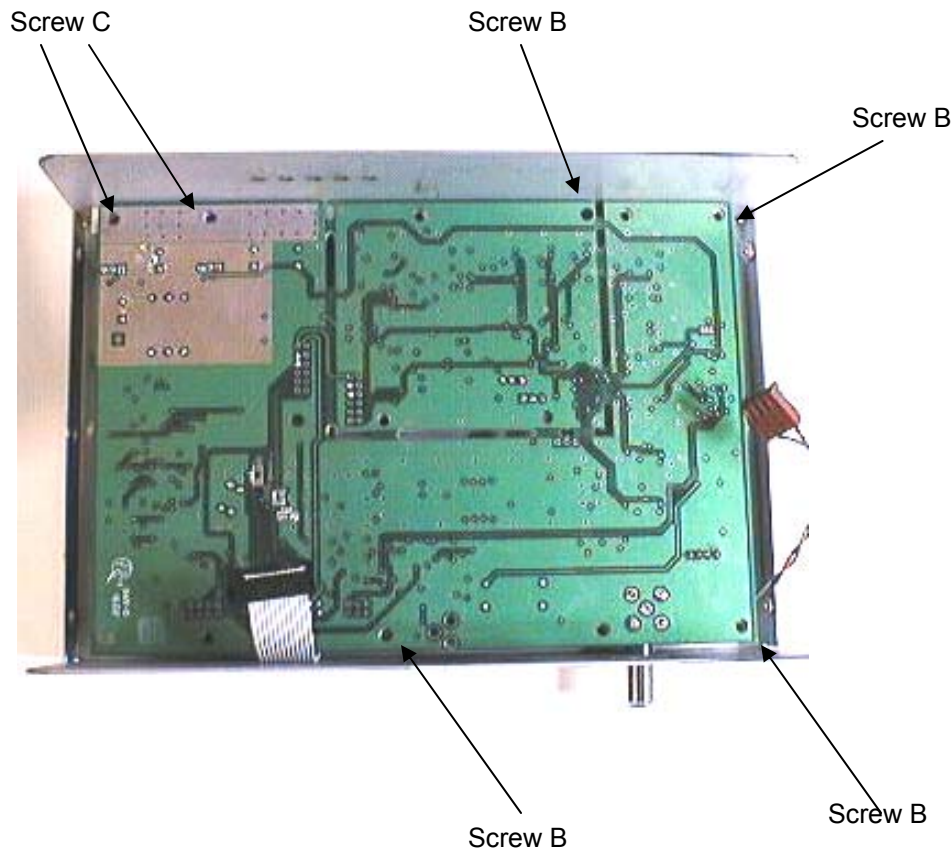


3. Lay flat the Housing Box with its rear facing you.
4. Insert the Heat Sink into the Housing Box. Make sure the heat Sink is firmly in place.

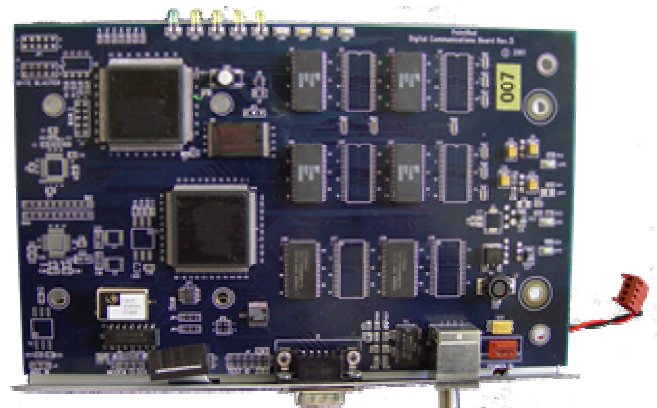
5. Insert the 14-Pin Ribbon Cable and the 4- Pin Power Cable to the Modem Board.



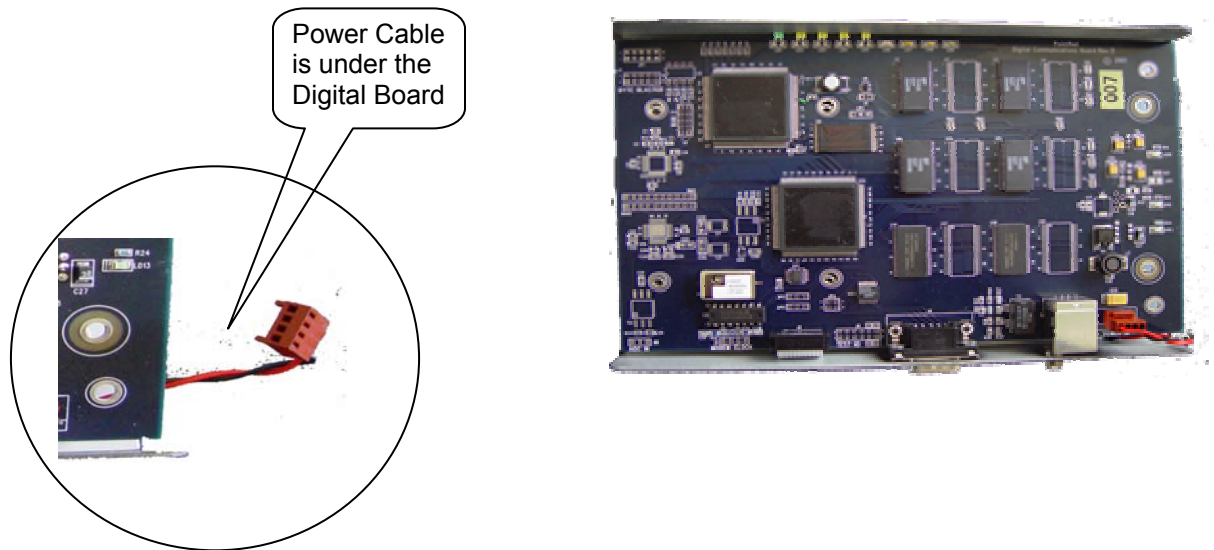
6. Place the Modem Board facing down into the Housing Box. At an angle, insert the F and the Power connectors into the openings then lay the Modem Board flat. Secure the Modem Board to the Housing Box with 5 screws.



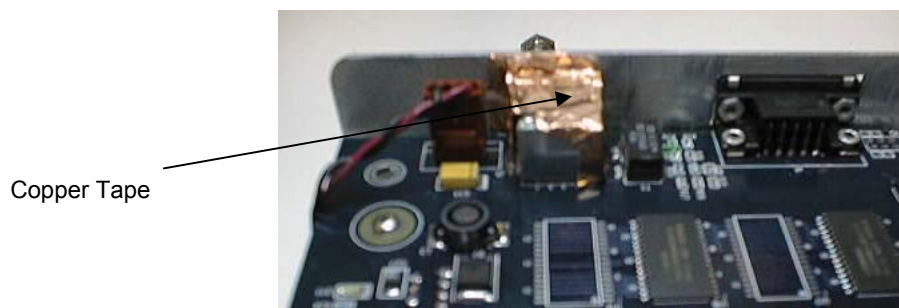
6. Place the Carrier Plate on top on the Modem Board. Run the 14-Pin Ribbon Cable and the 4-Pin Power Cable through the designated openings on the Carrier Plate. Tighten the Plate with 5 screws A. Make sure there's no gap between the edge of the carrier plate and the box.



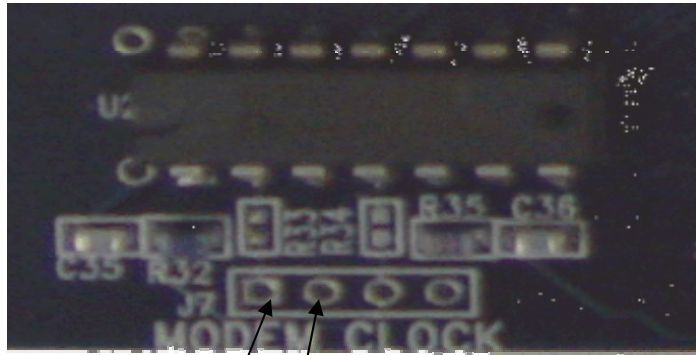
7. Place the Digital Board on top of the Carrier Plate. At an angle, slide the Ethernet and the 9-Pin Serial connectors into the opening as far back as possible (make sure the 4-Pin Power Cable is under the Digital Board so that the Board can slide back further). Slide the Digital Board forward to insert the LED into the holes. **BE CAREFUL NOT TO BEND THE LED.**



8. Plug the 14-Pin Ribbon Cable and the 4-Pin Power Cable to the Digital Board. Secure the Board with 6 screws C.
9. Surround the opening edges of the Ethernet port with copper tape.



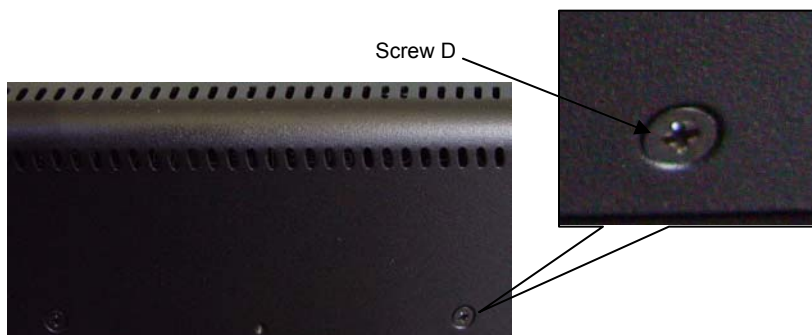
10. Solder the 15pf capacitor between pin1 and pin 2 of J7.



Pin 1 Pin 2

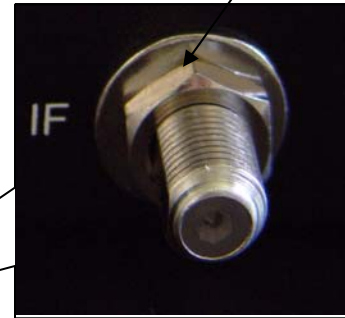


11. Place the Housing Lid onto the Housing Box by sliding it down vertically. Make sure the mounting holes on the lid are line up with the holes on the box. Tighten the lid with 4 screws D.



12. Hand tighten the F-connector to the CPE Box with a washer and nut. Add an additional 1/8 of a turn with a plier.

* Note: DO NOT OVER TIGHTEN THE NUT.



13. Put 4 rubber feet on four bottom corner of the CPE
14. Stick the label on the bottom of the CPE towards the rear.

Rubber Feet



Label

