

#01_WLAN2.4GHz_802.11b 1Mbps_Bottom of Laptop_0mm_Ch1;Ant 1

Communication System: 802.11b ; Frequency: 2412 MHz;Duty Cycle: 1:1.048

Medium: MSL_2450_151209 Medium parameters used: $f = 2412$ MHz; $\sigma = 1.946$ S/m; $\epsilon_r = 53.599$; $\rho = 1000$ kg/m³

Ambient Temperature : 23.3 °C; Liquid Temperature : 22.3 °C

DASY5 Configuration:

- Probe: ES3DV3 - SN3270; ConvF(4.37, 4.37, 4.37); Calibrated: 2015/9/28;
- Sensor-Surface: 2mm (Mechanical Surface Detection)
- Electronics: DAE4 Sn778; Calibrated: 2015/8/25
- Phantom: ELI v4.0_Front; Type: QDOVA001BB; Serial: TP:1029
- Measurement SW: DASY52, Version 52.8 (8);SEMCAD X Version 14.6.10 (7331)

Configuration/Ch1/Area Scan (71x31x1): Interpolated grid: dx=1.200 mm, dy=1.200 mm

Maximum value of SAR (interpolated) = 1.33 W/kg

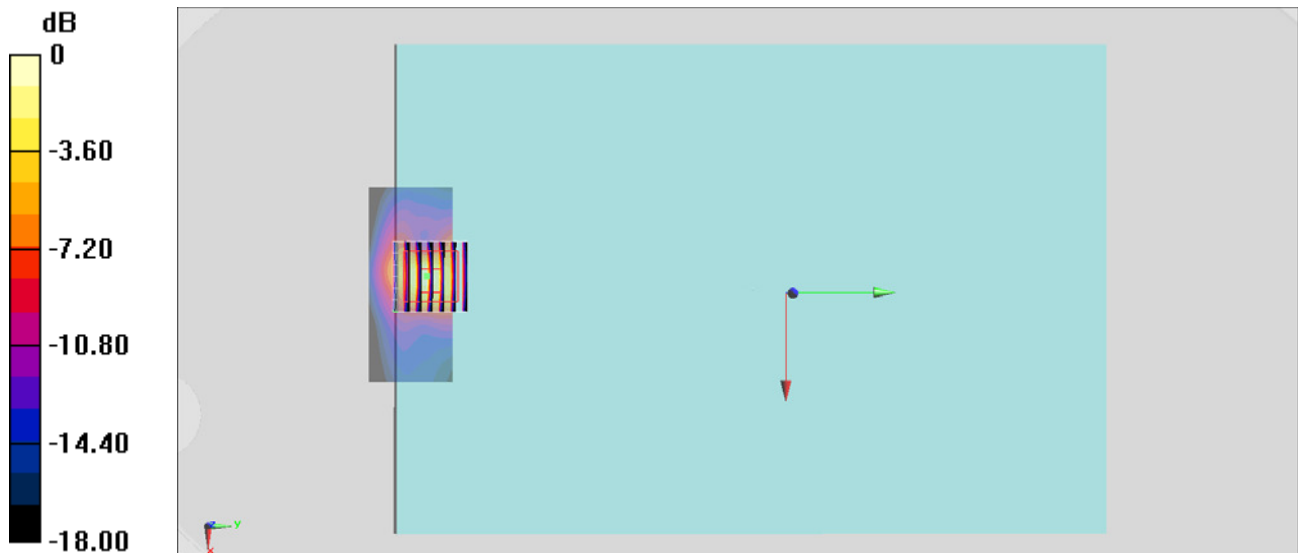
Configuration/Ch1/Zoom Scan (7x7x7)/Cube 0: Measurement grid: dx=5mm, dy=5mm, dz=5mm

Reference Value = 12.49 V/m; Power Drift = 0.14 dB

Peak SAR (extrapolated) = 2.31 W/kg

SAR(1 g) = 0.945 W/kg; SAR(10 g) = 0.381 W/kg

Maximum value of SAR (measured) = 1.44 W/kg



0 dB = 1.44 W/kg = 1.58 dBW/kg

#02_WLAN5GHz_802.11ac-VHT80 MCS0_Bottom of Laptop_0mm_Ch58;Ant 1

Communication System: 802.11ac ; Frequency: 5290 MHz;Duty Cycle: 1:1.06

Medium: MSL_5G_151209 Medium parameters used: $f = 5290$ MHz; $\sigma = 5.599$ S/m; $\epsilon_r = 46.772$; $\rho = 1000$ kg/m³

Ambient Temperature : 23.5 °C; Liquid Temperature : 22.5 °C

DASY5 Configuration:

- Probe: EX3DV4 - SN3955; ConvF(4.42, 4.42, 4.42); Calibrated: 2015/11/24;
- Sensor-Surface: 1.4mm (Mechanical Surface Detection)
- Electronics: DAE4 Sn1399; Calibrated: 2015/11/23
- Phantom: ELI v4.0_Front; Type: QDOVA001BB; Serial: TP:1029
- Measurement SW: DASY52, Version 52.8 (8);SEMCAD X Version 14.6.10 (7331)

Configuration/Ch58/Area Scan (81x41x1): Interpolated grid: dx=1.000 mm, dy=1.000 mm
 Maximum value of SAR (interpolated) = 0.744 W/kg

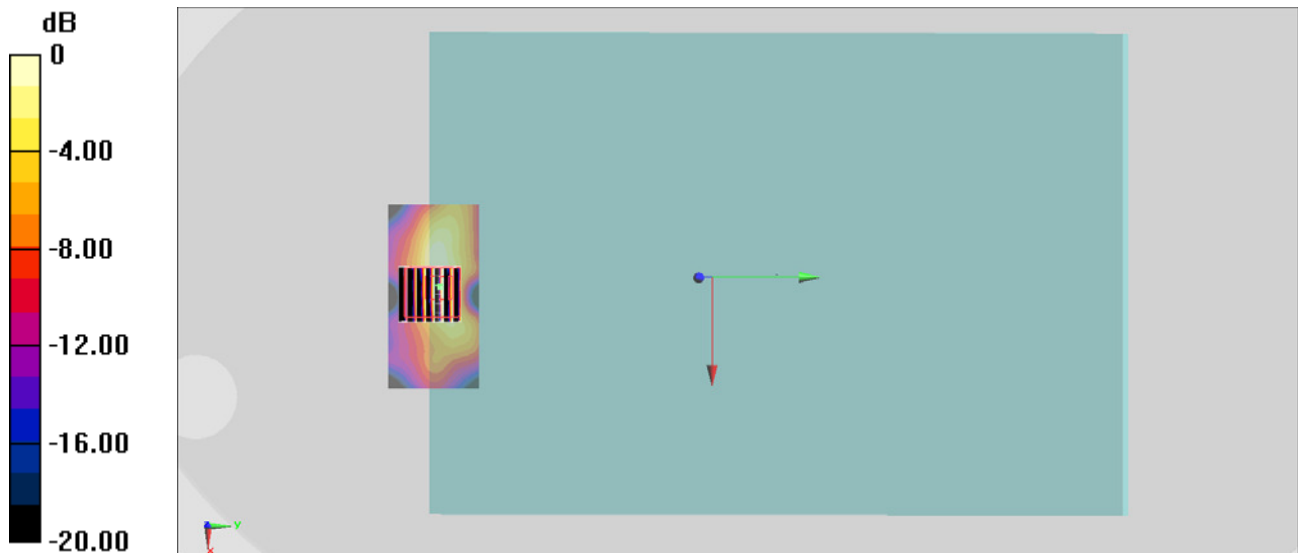
Configuration/Ch58/Zoom Scan (7x7x7)/Cube 0: Measurement grid: dx=4mm, dy=4mm, dz=1.4mm

Reference Value = 12.66 V/m; Power Drift = 0.08 dB

Peak SAR (extrapolated) = 1.07 W/kg

SAR(1 g) = 0.301 W/kg; SAR(10 g) = 0.090 W/kg

Maximum value of SAR (measured) = 0.706 W/kg



0 dB = 0.706 W/kg = -1.51 dBW/kg

#03_WLAN5GHz_802.11ac-VHT80 MCS0_Bottom of Laptop_0mm_Ch138;Ant 1

Communication System: 802.11ac; Frequency: 5690 MHz;Duty Cycle: 1:1.06

Medium: MSL_5G_151209 Medium parameters used: $f = 5690$ MHz; $\sigma = 6.123$ S/m; $\epsilon_r = 46.101$; $\rho = 1000$ kg/m³

Ambient Temperature : 23.5 °C; Liquid Temperature : 22.5 °C

DASY5 Configuration:

- Probe: EX3DV4 - SN3955; ConvF(3.81, 3.81, 3.81); Calibrated: 2015/11/24;
- Sensor-Surface: 1.4mm (Mechanical Surface Detection)
- Electronics: DAE4 Sn1399; Calibrated: 2015/11/23
- Phantom: ELI v4.0_Front; Type: QDOVA001BB; Serial: TP:1029
- Measurement SW: DASY52, Version 52.8 (8);SEMCAD X Version 14.6.10 (7331)

Configuration/Ch138/Area Scan (81x41x1): Interpolated grid: dx=1.000 mm, dy=1.000 mm
Maximum value of SAR (interpolated) = 1.73 W/kg

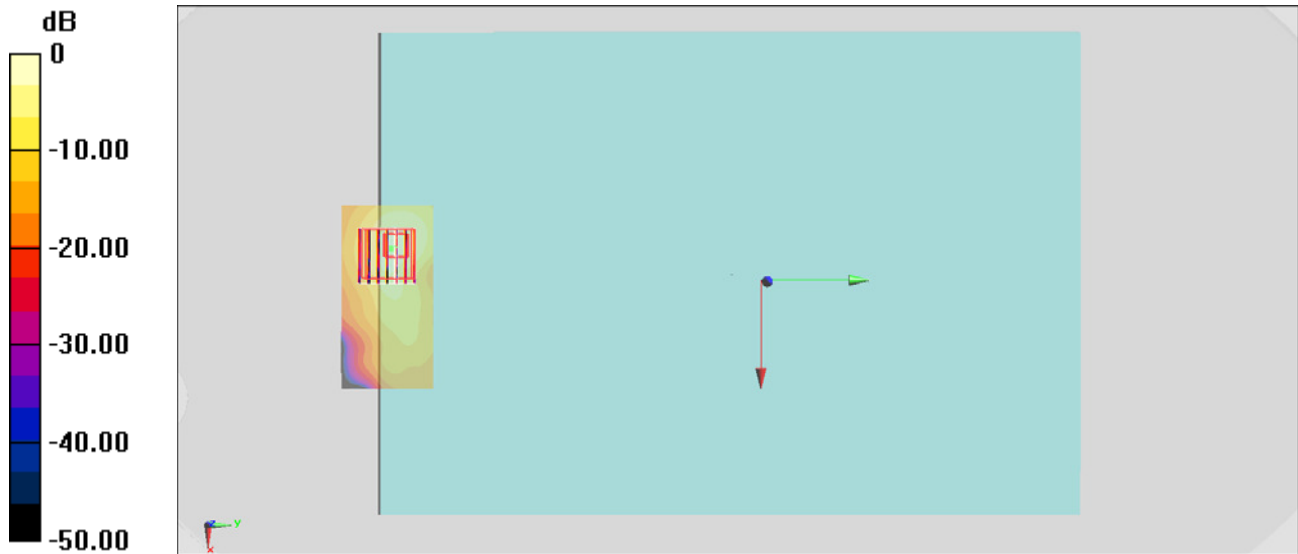
Configuration/Ch138/Zoom Scan (7x7x7)/Cube 0: Measurement grid: dx=4mm, dy=4mm, dz=1.4mm

Reference Value = 15.16 V/m; Power Drift = 0.10 dB

Peak SAR (extrapolated) = 3.13 W/kg

SAR(1 g) = 0.726 W/kg; SAR(10 g) = 0.201 W/kg

Maximum value of SAR (measured) = 1.82 W/kg



0 dB = 1.82 W/kg = 2.60 dBW/kg

#04_WLAN5GHz_802.11ac-VHT80 MCS0_Bottom of Laptop_0mm_Ch155;Ant 2

Communication System: 802.11ac; Frequency: 5775 MHz; Duty Cycle: 1:1.069

Medium: MSL_5G_151209 Medium parameters used: $f = 5775$ MHz; $\sigma = 6.24$ S/m; $\epsilon_r = 45.983$; $\rho = 1000$ kg/m³

Ambient Temperature : 23.5 °C; Liquid Temperature : 22.5 °C

DASY5 Configuration:

- Probe: EX3DV4 - SN3955; ConvF(3.92, 3.92, 3.92); Calibrated: 2015/11/24;
- Sensor-Surface: 1.4mm (Mechanical Surface Detection)
- Electronics: DAE4 Sn1399; Calibrated: 2015/11/23
- Phantom: ELI v4.0_Front; Type: QDOVA001BB; Serial: TP:1029
- Measurement SW: DASY52, Version 52.8 (8); SEMCAD X Version 14.6.10 (7331)

Configuration/Ch155/Area Scan (41x81x1): Interpolated grid: dx=1.000 mm, dy=1.000 mm
 Maximum value of SAR (interpolated) = 1.14 W/kg

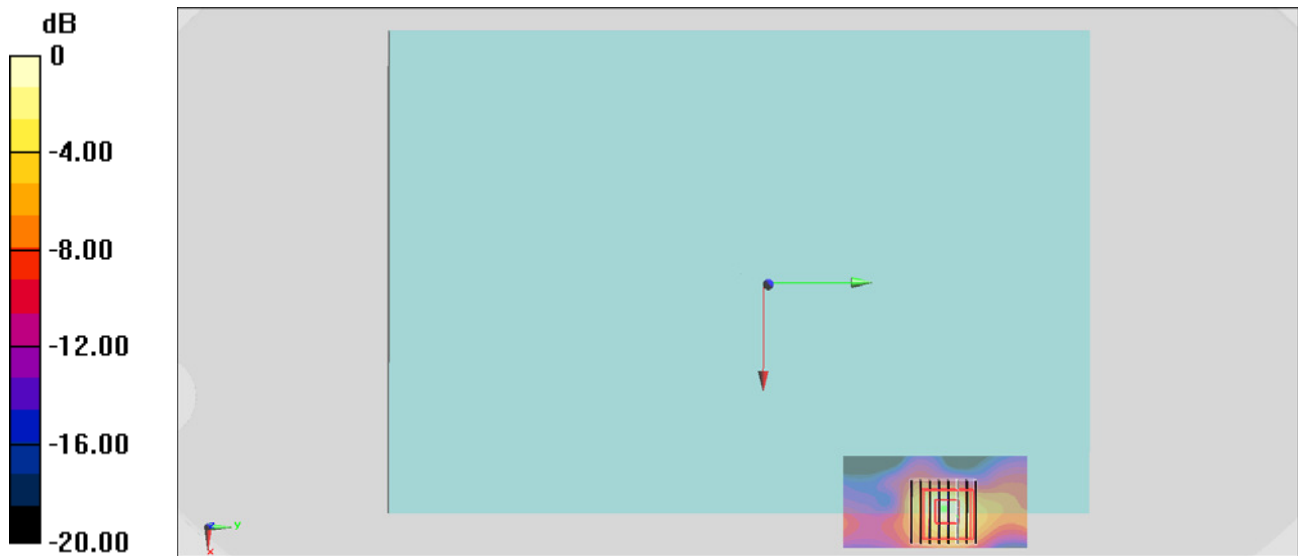
Configuration/Ch155/Zoom Scan (8x8x7)/Cube 0: Measurement grid: dx=4mm, dy=4mm, dz=1.4mm

Reference Value = 14.49 V/m; Power Drift = 0.13 dB

Peak SAR (extrapolated) = 1.88 W/kg

SAR(1 g) = 0.474 W/kg; SAR(10 g) = 0.148 W/kg

Maximum value of SAR (measured) = 1.15 W/kg



0 dB = 1.15 W/kg = 0.61 dBW/kg

#05_Bluetooth_1Mbps_Bottom of Laptop_0mm_Ch0

Communication System: Bluetooth ; Frequency: 2402 MHz; Duty Cycle: 1:1.2

Medium: MSL_2450_160107 Medium parameters used: $f = 2402 \text{ MHz}$; $\sigma = 1.91 \text{ S/m}$; $\epsilon_r = 53.154$; $\rho = 1000 \text{ kg/m}^3$

Ambient Temperature : $23.5 \text{ }^\circ\text{C}$; Liquid Temperature : $22.5 \text{ }^\circ\text{C}$

DASY5 Configuration

- Probe: ES3DV3 - SN3270; ConvF(4.37, 4.37, 4.37); Calibrated: 2015/9/28;
- Sensor-Surface: 2mm (Mechanical Surface Detection)
- Electronics: DAE4 Sn778; Calibrated: 2015/8/25
- Phantom: ELI v5.0; Type: QDOVA002AA; Serial: TP:1227
- Measurement SW: DASY52, Version 52.8 (8); SEMCAD X Version 14.6.10 (7331)

Configuration/Ch0/Area Scan (51x71x1): Interpolated grid: $dx=1.200 \text{ mm}$, $dy=1.200 \text{ mm}$

Maximum value of SAR (interpolated) = 0.00116 W/kg

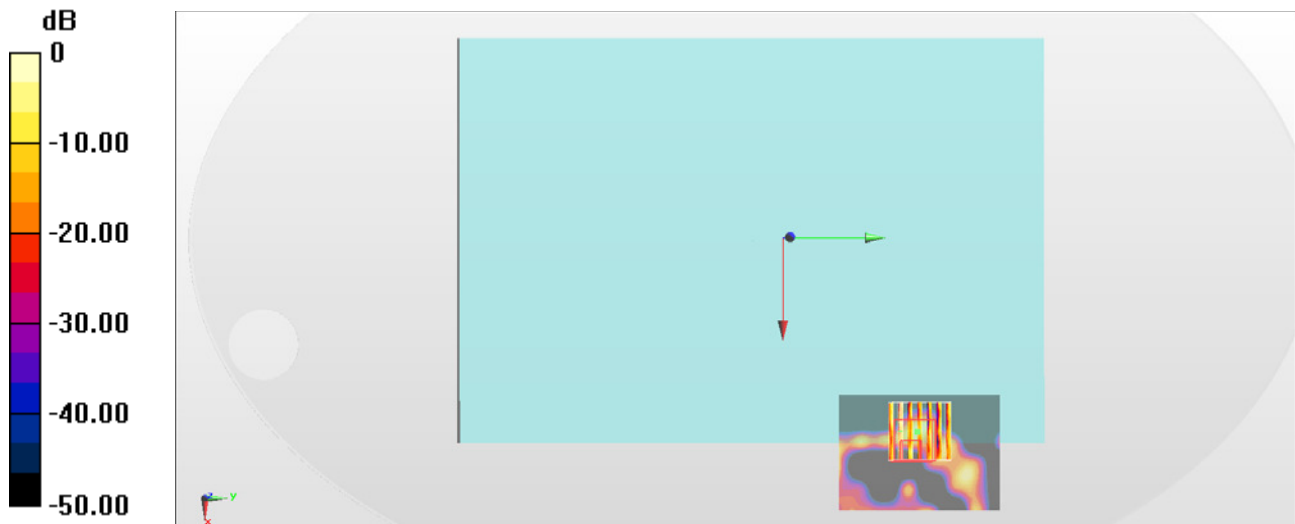
Configuration/Ch0/Zoom Scan (7x7x7)/Cube 0: Measurement grid: $dx=5\text{mm}$, $dy=5\text{mm}$, $dz=5\text{mm}$

Reference Value = 0.7370 V/m ; Power Drift = 0.12 dB

Peak SAR (extrapolated) = 0.00363 W/kg

SAR(1 g) = 0.000994 W/kg ; SAR(10 g) = 0.000471 W/kg

Maximum value of SAR (measured) = 0.00301 W/kg



0 dB = 0.00301 W/kg = -25.21 dBW/kg

#06_WLAN2.4GHz_802.11b 1Mbps_Bottom of Laptop_0mm_Ch1;Ant 1

Communication System: 802.11b; Frequency: 2412 MHz; Duty Cycle: 1:1.048

Medium: MSL_2450_151210 Medium parameters used: $f = 2412$ MHz; $\sigma = 1.95$ S/m; $\epsilon_r = 53.582$; $\rho = 1000$ kg/m³

Ambient Temperature : 23.2 °C; Liquid Temperature : 22.2 °C

DASY5 Configuration

- Probe: EX3DV4 - SN3931; ConvF(7.54, 7.54, 7.54); Calibrated: 2015/10/1;
- Sensor-Surface: 1.4mm (Mechanical Surface Detection)
- Electronics: DAE3 Sn577; Calibrated: 2015/9/24
- Phantom: ELI v5.0; Type: QDOVA002AA; Serial: TP:1227
- Measurement SW: DASY52, Version 52.8 (8); SEMCAD X Version 14.6.10 (7331)

Configuration/Ch1/Area Scan (41x61x1): Interpolated grid: dx=1.200 mm, dy=1.200 mm

Maximum value of SAR (interpolated) = 0.592 W/kg

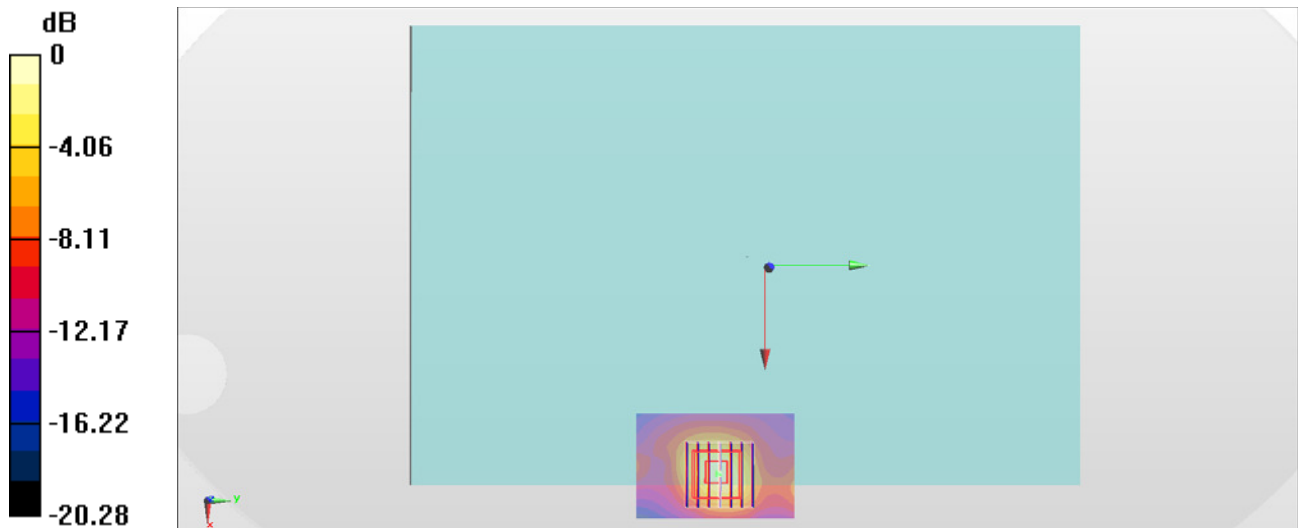
Configuration/Ch1/Zoom Scan (7x7x7)/Cube 0: Measurement grid: dx=5mm, dy=5mm, dz=5mm

Reference Value = 15.31 V/m; Power Drift = 0.06 dB

Peak SAR (extrapolated) = 0.740 W/kg

SAR(1 g) = 0.338 W/kg; SAR(10 g) = 0.145 W/kg

Maximum value of SAR (measured) = 0.568 W/kg



0 dB = 0.568 W/kg = -2.46 dBW/kg

#07_WLAN5GHz_802.11ac-VHT80 MCS0_Bottom of Laptop_0mm_Ch58;Ant 1

Communication System: 802.11ac; Frequency: 5290 MHz; Duty Cycle: 1:1.060

Medium: MSL_5G_151209 Medium parameters used: $f = 5290$ MHz; $\sigma = 5.599$ S/m; $\epsilon_r = 46.772$; $\rho = 1000$ kg/m³

Ambient Temperature : 23.2 °C; Liquid Temperature : 22.2 °C

DASY5 Configuration

- Probe: EX3DV4 - SN3931; ConvF(4.48, 4.48, 4.48); Calibrated: 2015/10/1;
- Sensor-Surface: 1.4mm (Mechanical Surface Detection)
- Electronics: DAE3 Sn577; Calibrated: 2015/9/24
- Phantom: ELI v5.0; Type: QDOVA002AA; Serial: TP:1227
- Measurement SW: DASY52, Version 52.8 (8); SEMCAD X Version 14.6.10 (7331)

Configuration/Ch58/Area Scan (41x71x1): Interpolated grid: dx=1.000 mm, dy=1.000 mm
 Maximum value of SAR (interpolated) = 1.87 W/kg

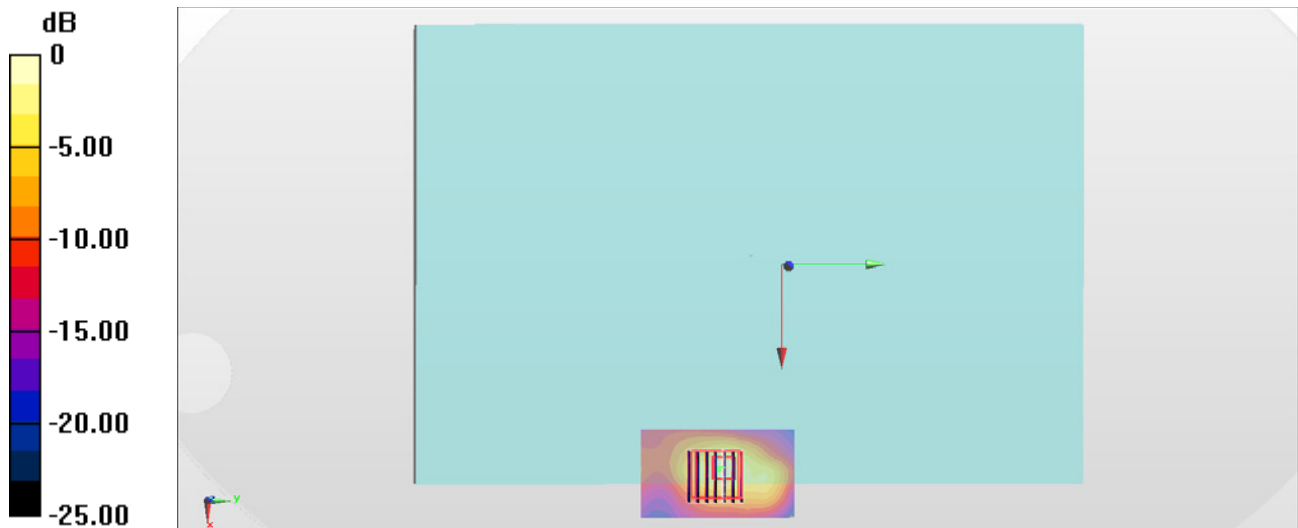
Configuration/Ch58/Zoom Scan (7x7x7)/Cube 0: Measurement grid: dx=4mm, dy=4mm, dz=1.4mm

Reference Value = 18.48 V/m; Power Drift = -0.13 dB

Peak SAR (extrapolated) = 3.59 W/kg

SAR(1 g) = 0.882 W/kg; SAR(10 g) = 0.260 W/kg

Maximum value of SAR (measured) = 2.15 W/kg



0 dB = 2.15 W/kg = 3.32 dBW/kg

#08_WLAN5GHz_802.11ac-VHT80 MCS0_Bottom of Laptop_0mm_Ch138;Ant 1

Communication System: 802.11ac ; Frequency: 5690 MHz;Duty Cycle: 1:1.060

Medium: MSL_5G_151209 Medium parameters used: $f = 5690$ MHz; $\sigma = 6.123$ S/m; $\epsilon_r = 46.101$; $\rho = 1000$ kg/m³

Ambient Temperature : 23.2 °C; Liquid Temperature : 22.2 °C

DASY5 Configuration

- Probe: EX3DV4 - SN3931; ConvF(3.84, 3.84, 3.84); Calibrated: 2015/10/1;
- Sensor-Surface: 1.4mm (Mechanical Surface Detection)
- Electronics: DAE3 Sn577; Calibrated: 2015/9/24
- Phantom: ELI v5.0; Type: QDOVA002AA; Serial: TP:1227
- Measurement SW: DASY52, Version 52.8 (8); SEMCAD X Version 14.6.10 (7331)

Configuration/Ch138/Area Scan (41x71x1): Interpolated grid: dx=1.000 mm, dy=1.000 mm
 Maximum value of SAR (interpolated) = 2.50 W/kg

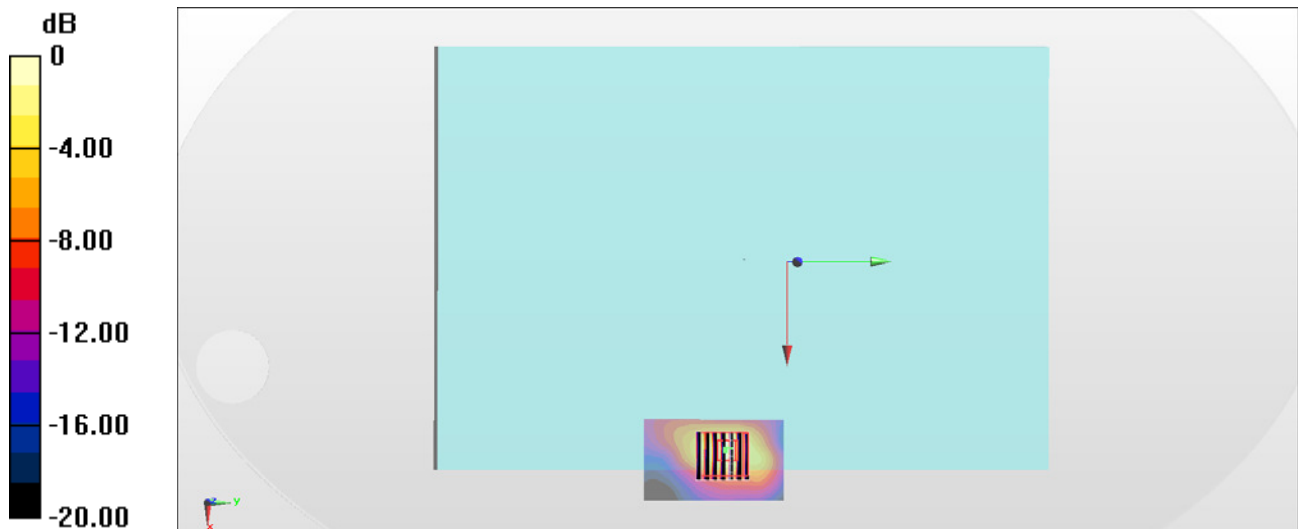
Configuration/Ch138/Zoom Scan (7x7x7)/Cube 0: Measurement grid: dx=4mm, dy=4mm, dz=1.4mm

Reference Value = 16.12 V/m; Power Drift = -0.10 dB

Peak SAR (extrapolated) = 4.79 W/kg

SAR(1 g) = 1.08 W/kg; SAR(10 g) = 0.333 W/kg

Maximum value of SAR (measured) = 2.75 W/kg



0 dB = 2.75 W/kg = 4.39 dBW/kg

#09_WLAN5GHz_802.11ac-VHT80 MCS0_Bottom of Laptop_0mm_Ch155;Ant 1

Communication System: 802.11ac; Frequency: 5775 MHz; Duty Cycle: 1:1.060

Medium: MSL_5G_151209 Medium parameters used: $f = 5775$ MHz; $\sigma = 6.24$ S/m; $\epsilon_r = 45.983$; $\rho = 1000$ kg/m³

Ambient Temperature : 23.2 °C; Liquid Temperature : 22.2 °C

DASY5 Configuration

- Probe: EX3DV4 - SN3931; ConvF(3.98, 3.98, 3.98); Calibrated: 2015/10/1;
- Sensor-Surface: 1.4mm (Mechanical Surface Detection)
- Electronics: DAE3 Sn577; Calibrated: 2015/9/24
- Phantom: ELI v5.0; Type: QDOVA002AA; Serial: TP:1227
- Measurement SW: DASY52, Version 52.8 (8); SEMCAD X Version 14.6.10 (7331)

Configuration/Ch155/Area Scan (41x71x1): Interpolated grid: dx=1.000 mm, dy=1.000 mm
 Maximum value of SAR (interpolated) = 2.10 W/kg

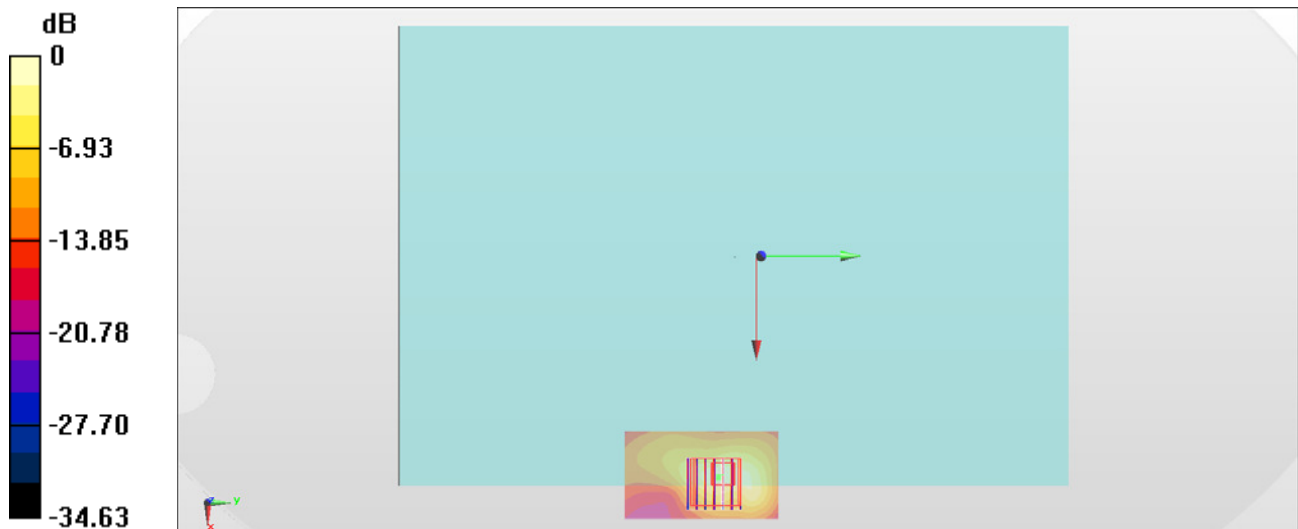
Configuration/Ch155/Zoom Scan (7x7x7)/Cube 0: Measurement grid: dx=4mm, dy=4mm, dz=1.4mm

Reference Value = 15.02 V/m; Power Drift = -0.13 dB

Peak SAR (extrapolated) = 4.15 W/kg

SAR(1 g) = 0.904 W/kg; SAR(10 g) = 0.255 W/kg

Maximum value of SAR (measured) = 2.33 W/kg



0 dB = 2.33 W/kg = 3.67 dBW/kg

#10_Bluetooth_1Mbps_Bottom of Laptop_0mm_Ch39

Communication System: Bluetooth; Frequency: 2441 MHz; Duty Cycle: 1:1.2

Medium: MSL_2450_160107 Medium parameters used: $f = 2441$ MHz; $\sigma = 1.961$ S/m; $\epsilon_r = 53.016$; $\rho = 1000$ kg/m³

Ambient Temperature : 23.5 °C; Liquid Temperature : 22.5 °C

DASY5 Configuration

- Probe: ES3DV3 - SN3270; ConvF(4.37, 4.37, 4.37); Calibrated: 2015/9/28;
- Sensor-Surface: 2mm (Mechanical Surface Detection)
- Electronics: DAE4 Sn778; Calibrated: 2015/8/25
- Phantom: ELI v5.0; Type: QDOVA002AA; Serial: TP:1227
- Measurement SW: DASY52, Version 52.8 (8); SEMCAD X Version 14.6.10 (7331)

Configuration/Ch39/Area Scan (51x71x1): Interpolated grid: dx=1.200 mm, dy=1.200 mm
 Maximum value of SAR (interpolated) = 0.00411 W/kg

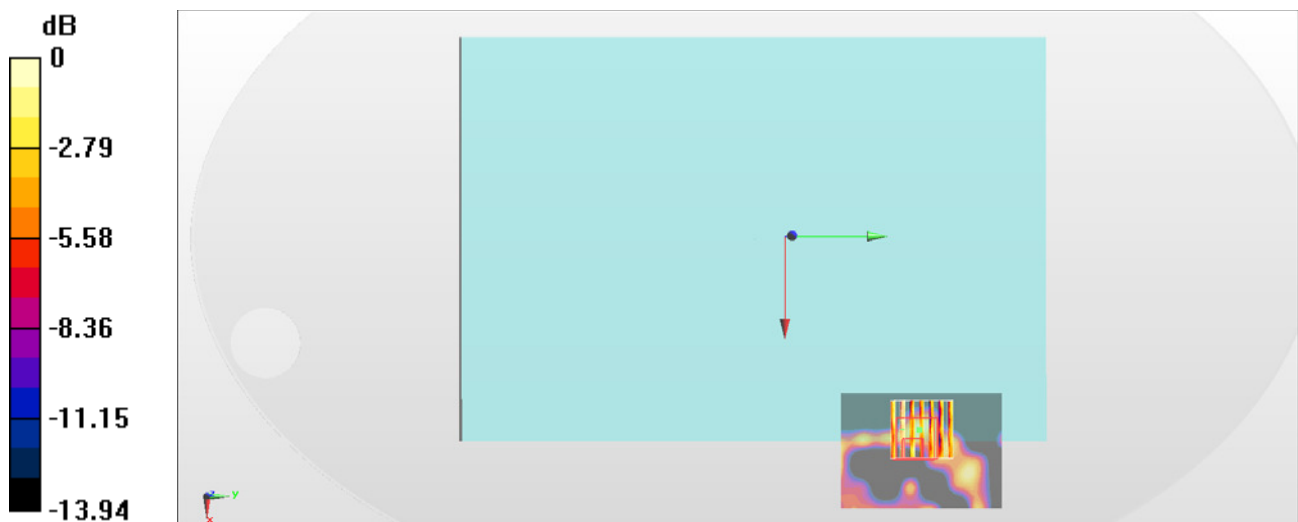
Configuration/Ch39/Zoom Scan (7x7x7)/Cube 0: Measurement grid: dx=5mm, dy=5mm, dz=5mm

Reference Value = 0.9510 V/m; Power Drift = -0.10 dB

Peak SAR (extrapolated) = 0.00623 W/kg

SAR(1 g) = 0.00283 W/kg; SAR(10 g) = 0.0022 W/kg

Maximum value of SAR (measured) = 0.00443 W/kg



0 dB = 0.00443 W/kg = -23.54 dBW/kg