

## 20150124\_System check\_Diple5GHzv2 SN1004

Frequency: 5200 MHz; Duty Cycle: 1:1; Room Ambient Temperature: 24.5°C; Liquid Temperature: 24.0°C

Medium parameters used (interpolated):  $f = 5200$  MHz;  $\sigma = 5.145$  S/m;  $\epsilon_r = 48.558$ ;  $\rho = 1000$  kg/m<sup>3</sup>

DASY5 Configuration:

- Area Scan Setting - Find Secondary Maximum Within: 2.0 dB and with a peak SAR value greater than 0.0012W/kg
- Electronics: DAE4 Sn877; Calibrated: 2014/03/26
- Probe: EX3DV4 - SN3665; ConvF(4.43, 4.43, 4.43); Calibrated: 2014/05/22;
- Sensor-Surface: 1.4mm (Mechanical Surface Detection)
- Phantom: ELI 4.0; Type: QDOVA001BA; Serial: 1056

**Body/5200MHz,Pin=100mW,d=10mm/Area Scan (7x7x1):** Measurement grid: dx=10mm, dy=10mm

[Info: Interpolated medium parameters used for SAR evaluation.](#)

Maximum value of SAR (measured) = 18.8 W/kg

**Body/5200MHz,Pin=100mW,d=10mm/Zoom Scan (7x7x6)/Cube 0:** Measurement grid: dx=4mm, dy=4mm, dz=1.4mm

Reference Value = 42.31 V/m; Power Drift = -0.03 dB

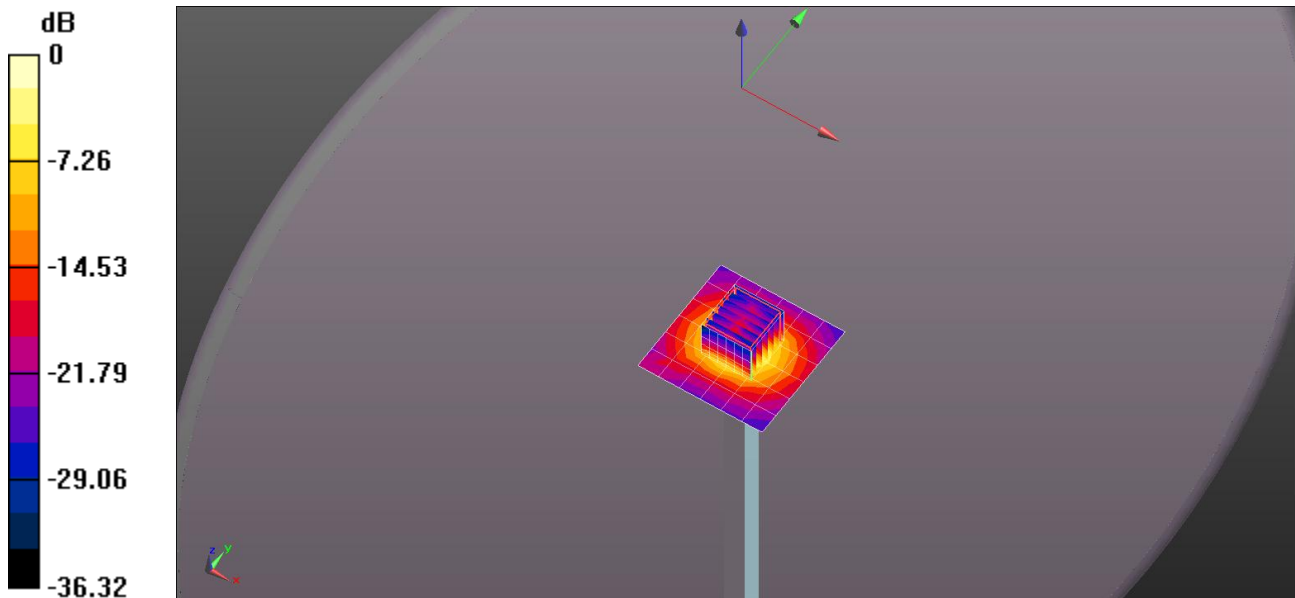
Peak SAR (extrapolated) = 28.4 W/kg

Peak SAR (extrapolated) = 28.4 W/kg

**SAR(1 g) = 7.4 W/kg; SAR(10 g) = 2.14 W/kg**

[Info: Interpolated medium parameters used for SAR evaluation.](#)

Maximum value of SAR (measured) = 18.6 W/kg



0 dB = 18.6 W/kg = 12.70 dBW/kg

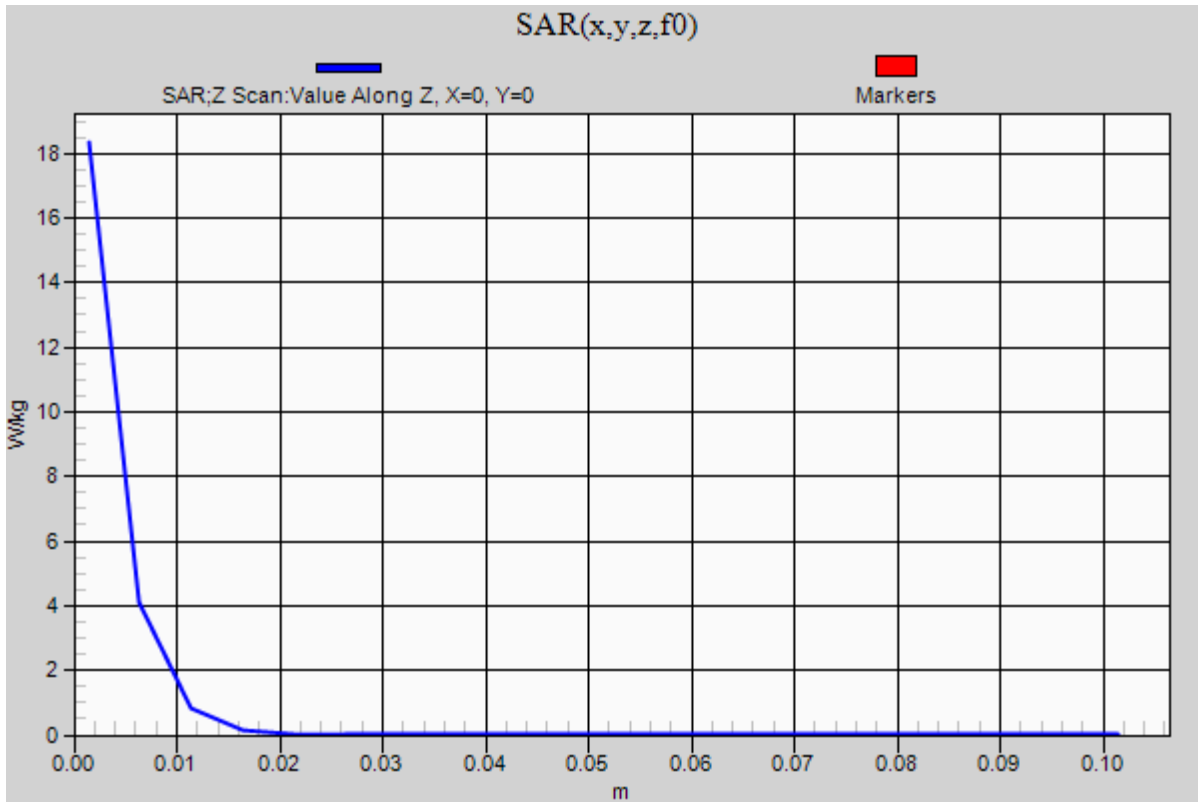
### 20150124\_System check\_Diple5GHzv2 SN1004

Frequency: 5200 MHz; Duty Cycle: 1:1

**Body/5200MHz,Pin=100mW,d=10mm/Z Scan (1x1x21):** Measurement grid: dx=20mm, dy=20mm, dz=5mm

Info: [Interpolated medium parameters used for SAR evaluation.](#)

Maximum value of SAR (measured) = 18.3 W/kg



## 20150124\_System check\_Diple5GHzv2 SN1004

Frequency: 5300 MHz; Duty Cycle: 1:1; Room Ambient Temperature: 24.5°C; Liquid Temperature: 24.0°C

Medium parameters used:  $f = 5300.2 \text{ MHz}$ ;  $\sigma = 5.269 \text{ S/m}$ ;  $\epsilon_r = 48.462$ ;  $\rho = 1000 \text{ kg/m}^3$

DASY5 Configuration:

- Area Scan Setting - Find Secondary Maximum Within: 2.0 dB and with a peak SAR value greater than 0.0012W/kg
- Electronics: DAE4 Sn877; Calibrated: 2014/03/26
- Probe: EX3DV4 - SN3665; ConvF(4.23, 4.23, 4.23); Calibrated: 2014/05/22;
- Sensor-Surface: 1.4mm (Mechanical Surface Detection (Locations From Previous Scan Used)), Sensor-Surface: 1.4mm (Mechanical Surface Detection)
- Phantom: ELI 4.0; Type: QDOVA001BA; Serial: 1056

**Body/5300MHz,Pin=100mW,d=10mm/Area Scan (7x7x1):** Measurement grid: dx=10mm, dy=10mm

Maximum value of SAR (measured) = 21.5 W/kg

**Body/5300MHz,Pin=100mW,d=10mm/Zoom Scan (7x7x6)/Cube 0:** Measurement grid: dx=4mm, dy=4mm, dz=1.4mm

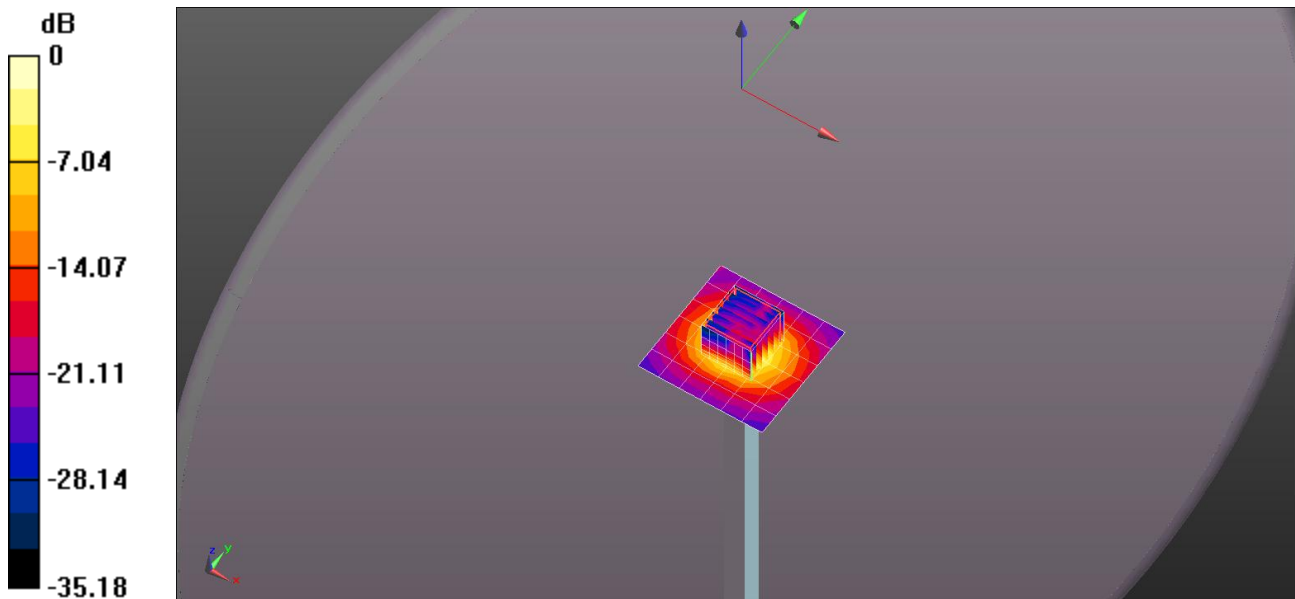
Reference Value = 44.14 V/m; Power Drift = -0.05 dB

Peak SAR (extrapolated) = 29.2 W/kg

Peak SAR (extrapolated) = 29.2 W/kg

**SAR(1 g) = 7.51 W/kg; SAR(10 g) = 2.19 W/kg**

Maximum value of SAR (measured) = 18.9 W/kg



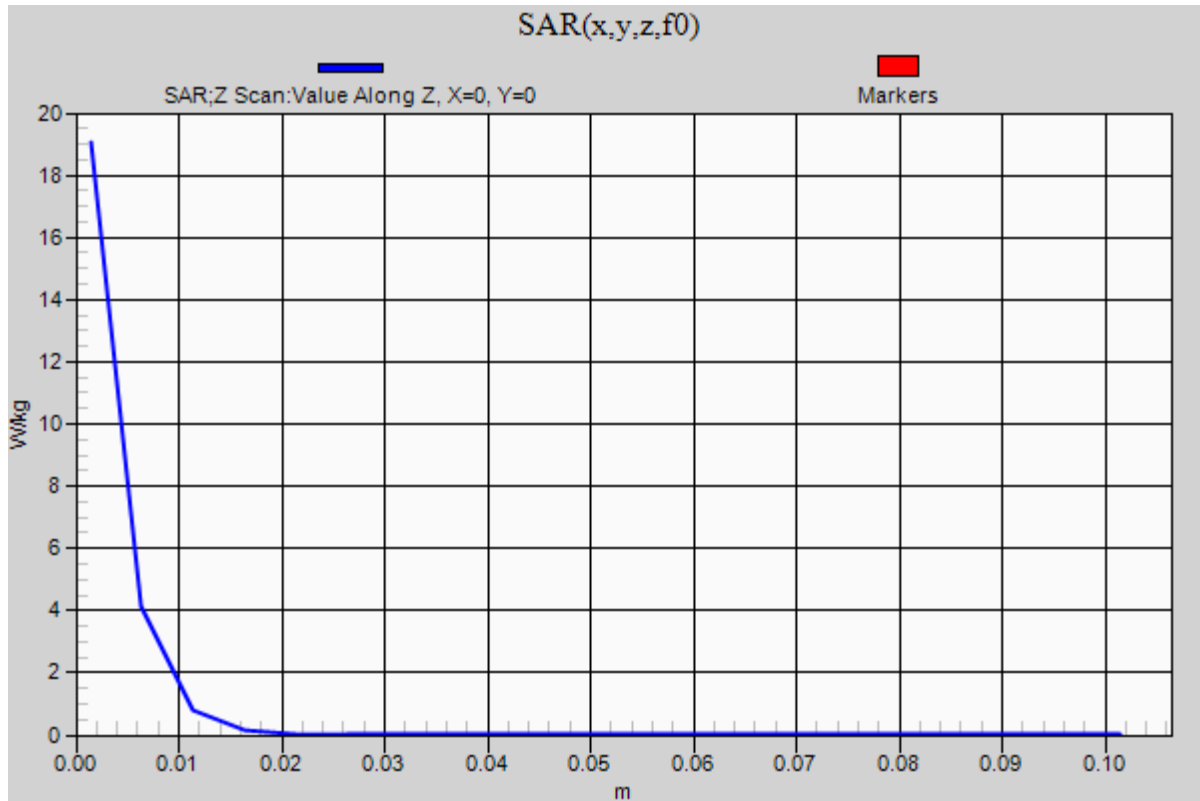
0 dB = 18.9 W/kg = 12.76 dBW/kg

### 20150124\_System check\_Diple5GHzv2 SN1004

Frequency: 5300 MHz; Duty Cycle: 1:1

**Body/5300MHz,Pin=100mW,d=10mm/Z Scan (1x1x21):** Measurement grid: dx=20mm, dy=20mm, dz=5mm

Maximum value of SAR (measured) = 19.0 W/kg



## 20150124\_System check\_Diple5GHzv2 SN1004

Frequency: 5600 MHz; Duty Cycle: 1:1; Room Ambient Temperature: 24.5°C; Liquid Temperature: 24.0°C  
 Medium parameters used:  $f = 5600.5$  MHz;  $\sigma = 5.672$  S/m;  $\epsilon_r = 48.006$ ;  $\rho = 1000$  kg/m<sup>3</sup>

DASY5 Configuration:

- Area Scan Setting - Find Secondary Maximum Within: 2.0 dB and with a peak SAR value greater than 0.0012W/kg
- Electronics: DAE4 Sn877; Calibrated: 2014/03/26
- Probe: EX3DV4 - SN3665; ConvF(3.82, 3.82, 3.82); Calibrated: 2014/05/22;
- Sensor-Surface: 1.4mm (Mechanical Surface Detection)
- Phantom: ELI 4.0; Type: QDOVA001BA; Serial: 1056

**Body/5600MHz,Pin=100mW,d=10mm/Area Scan (7x7x1):** Measurement grid: dx=10mm, dy=10mm

Maximum value of SAR (measured) = 23.3 W/kg

**Body/5600MHz,Pin=100mW,d=10mm/Zoom Scan (7x7x6)/Cube 0:** Measurement grid: dx=4mm, dy=4mm, dz=1.4mm

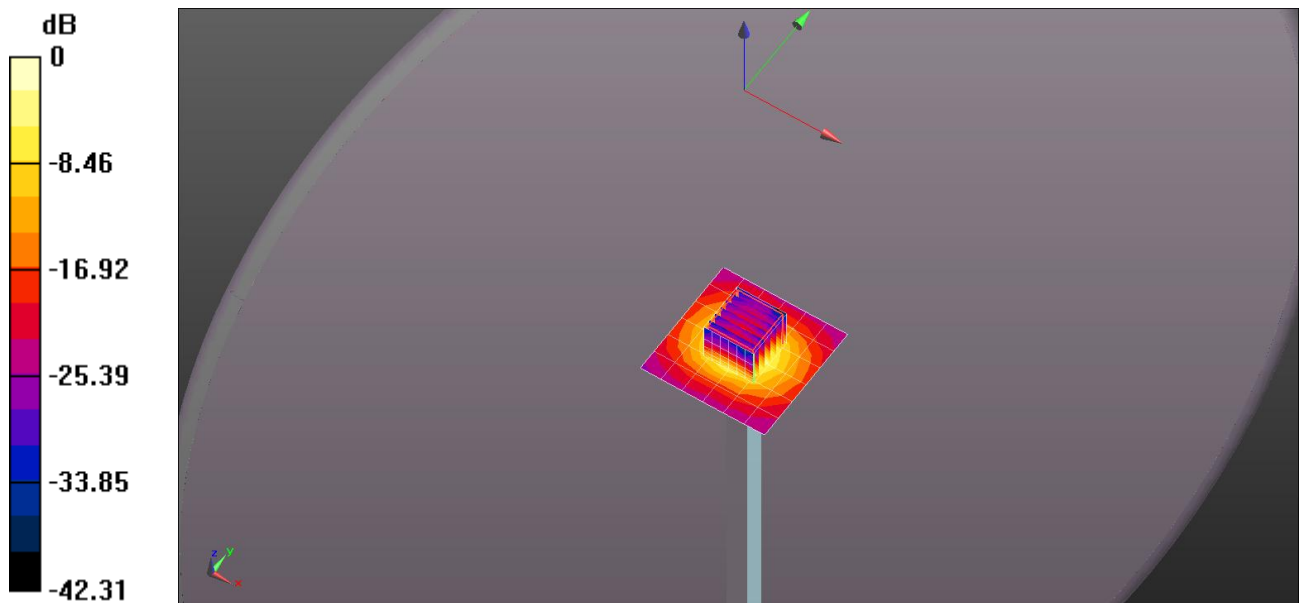
Reference Value = 43.11 V/m; Power Drift = -0.03 dB

Peak SAR (extrapolated) = 34.2 W/kg

Peak SAR (extrapolated) = 34.2 W/kg

**SAR(1 g) = 8.13 W/kg; SAR(10 g) = 2.32 W/kg**

Maximum value of SAR (measured) = 21.1 W/kg



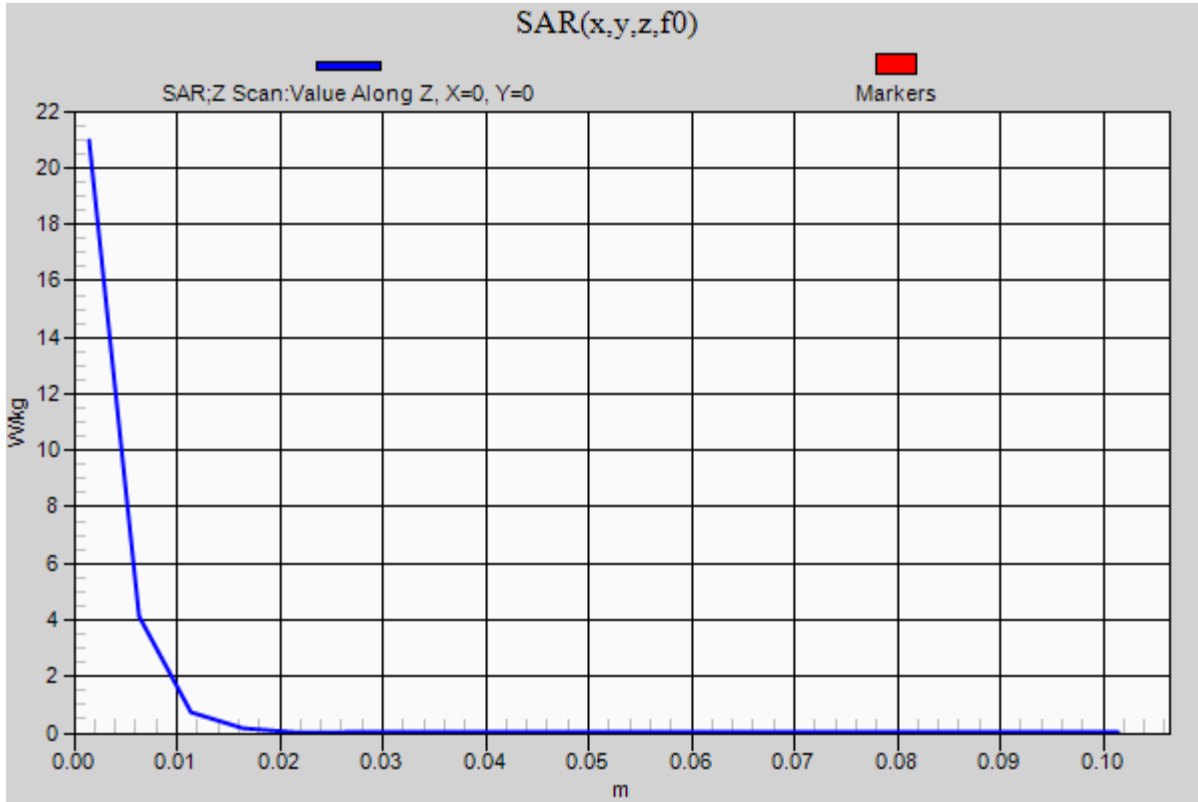
0 dB = 21.1 W/kg = 13.24 dBW/kg

### 20150124\_System check\_Diple5GHzv2 SN1004

Frequency: 5600 MHz; Duty Cycle: 1:1

**Body/5600MHz,Pin=100mW,d=10mm/Z Scan (1x1x21):** Measurement grid: dx=20mm, dy=20mm, dz=5mm

Maximum value of SAR (measured) = 21.0 W/kg



## 20150124\_System check\_Diple5GHzv2 SN1004

Frequency: 5800 MHz; Duty Cycle: 1:1; Room Ambient Temperature: 24.5°C; Liquid Temperature: 24.0°C

Medium parameters used (interpolated):  $f = 5800$  MHz;  $\sigma = 5.906$  S/m;  $\epsilon_r = 47.714$ ;  $\rho = 1000$  kg/m<sup>3</sup>

DASY5 Configuration:

- Area Scan Setting - Find Secondary Maximum Within: 2.0 dB and with a peak SAR value greater than 0.0012W/kg
- Electronics: DAE4 Sn877; Calibrated: 2014/03/26
- Probe: EX3DV4 - SN3665; ConvF(4.22, 4.22, 4.22); Calibrated: 2014/05/22;
- Sensor-Surface: 1.4mm (Mechanical Surface Detection (Locations From Previous Scan Used)), Sensor-Surface: 1.4mm (Mechanical Surface Detection)
- Phantom: ELI 4.0; Type: QDOVA001BA; Serial: 1056

**Body/5800MHz,Pin=100mW,d=10mm/Area Scan (7x7x1):** Measurement grid: dx=10mm, dy=10mm

[Info: Interpolated medium parameters used for SAR evaluation.](#)

Maximum value of SAR (measured) = 17.9 W/kg

**Body/5800MHz,Pin=100mW,d=10mm/Zoom Scan (7x7x6)/Cube 0:** Measurement grid: dx=4mm, dy=4mm, dz=1.4mm

Reference Value = 36.26 V/m; Power Drift = 0.03 dB

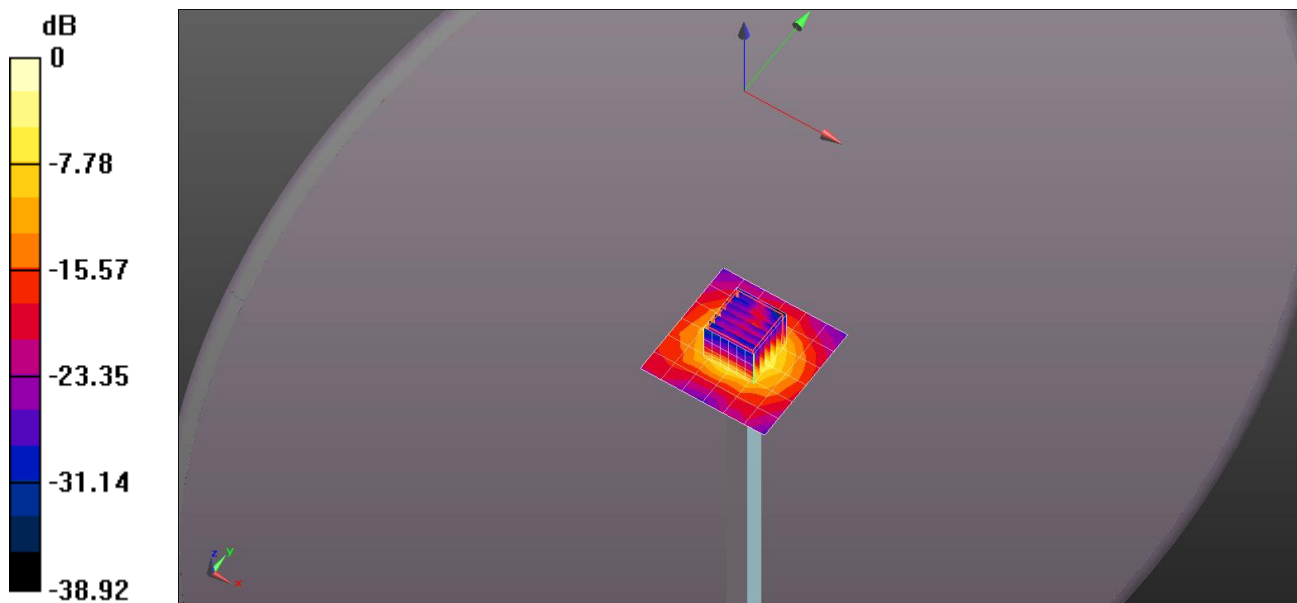
Peak SAR (extrapolated) = 31.8 W/kg

Peak SAR (extrapolated) = 31.8 W/kg

**SAR(1 g) = 7.29 W/kg; SAR(10 g) = 2.1 W/kg**

[Info: Interpolated medium parameters used for SAR evaluation.](#)

Maximum value of SAR (measured) = 19.1 W/kg



0 dB = 19.1 W/kg = 12.81 dBW/kg

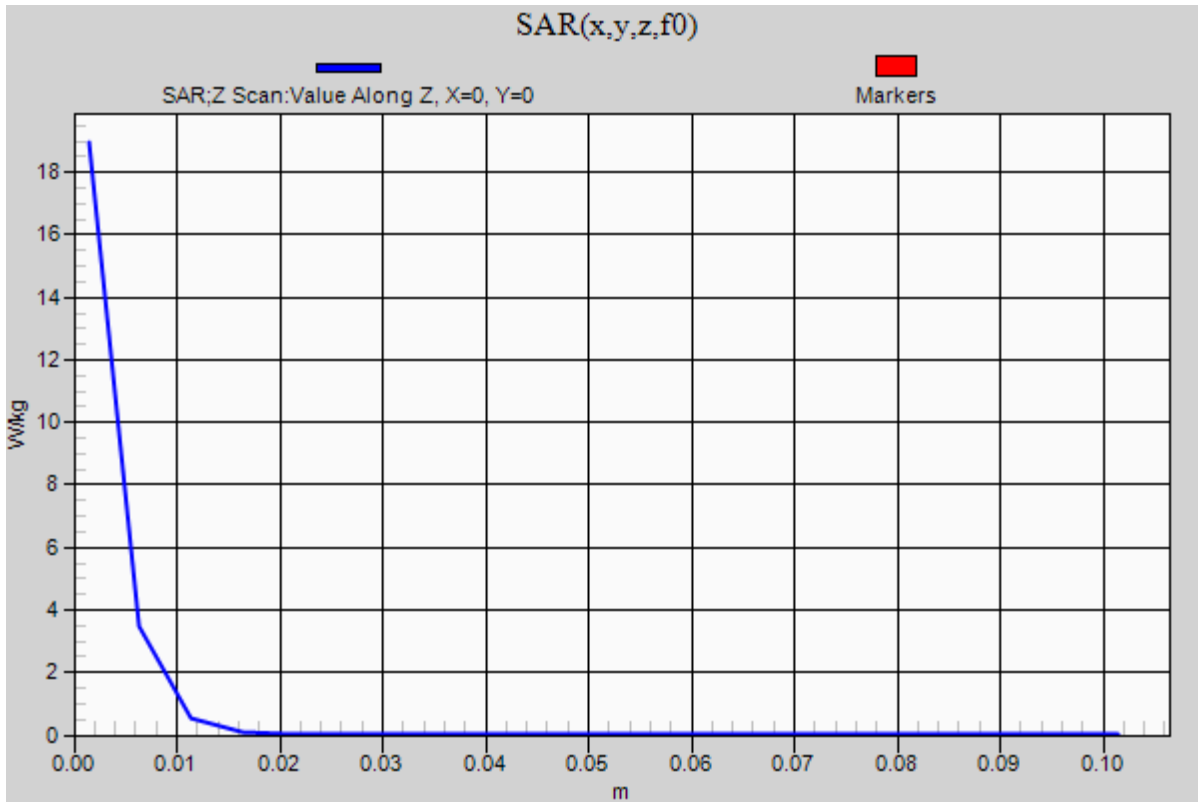
### 20150124\_System check\_Diple5GHzv2 SN1004

Frequency: 5800 MHz; Duty Cycle: 1:1

**Body/5800MHz,Pin=100mW,d=10mm/Z Scan (1x1x21):** Measurement grid: dx=20mm, dy=20mm, dz=5mm

Info: [Interpolated medium parameters used for SAR evaluation.](#)

Maximum value of SAR (measured) = 19.0 W/kg





## 20150125\_System check\_Diple5GHzv2 SN1004

Frequency: 5200 MHz; Duty Cycle: 1:1; Room Ambient Temperature: 24.5°C; Liquid Temperature: 24.0°C

Medium parameters used (interpolated):  $f = 5200$  MHz;  $\sigma = 5.296$  S/m;  $\epsilon_r = 50.555$ ;  $\rho = 1000$  kg/m<sup>3</sup>

DASY5 Configuration:

- Area Scan Setting - Find Secondary Maximum Within: 2.0 dB and with a peak SAR value greater than 0.0012W/kg
- Electronics: DAE4 Sn877; Calibrated: 2014/03/26
- Probe: EX3DV4 - SN3665; ConvF(4.43, 4.43, 4.43); Calibrated: 2014/05/22;
- Sensor-Surface: 1.4mm (Mechanical Surface Detection)
- Phantom: ELI 4.0; Type: QDOVA001BA; Serial: 1056

**Body/5200MHz,Pin=100mW,d=10mm/Area Scan (7x7x1):** Measurement grid: dx=10mm, dy=10mm

[Info: Interpolated medium parameters used for SAR evaluation.](#)

Maximum value of SAR (measured) = 17.6 W/kg

**Body/5200MHz,Pin=100mW,d=10mm/Zoom Scan (7x7x6)/Cube 0:** Measurement grid: dx=4mm,

dy=4mm, dz=1.4mm

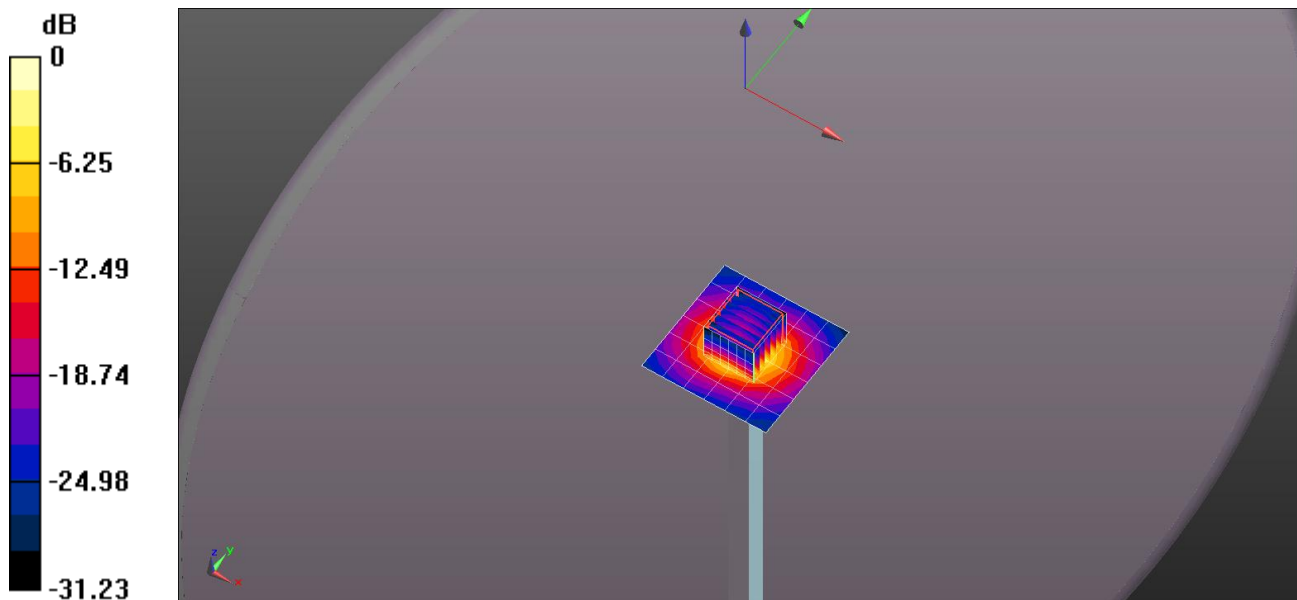
Reference Value = 39.91 V/m; Power Drift = 0.03 dB

Peak SAR (extrapolated) = 29.4 W/kg

**SAR(1 g) = 7.5 W/kg; SAR(10 g) = 2.16 W/kg**

[Info: Interpolated medium parameters used for SAR evaluation.](#)

Maximum value of SAR (measured) = 19.2 W/kg



0 dB = 19.2 W/kg = 12.83 dBW/kg

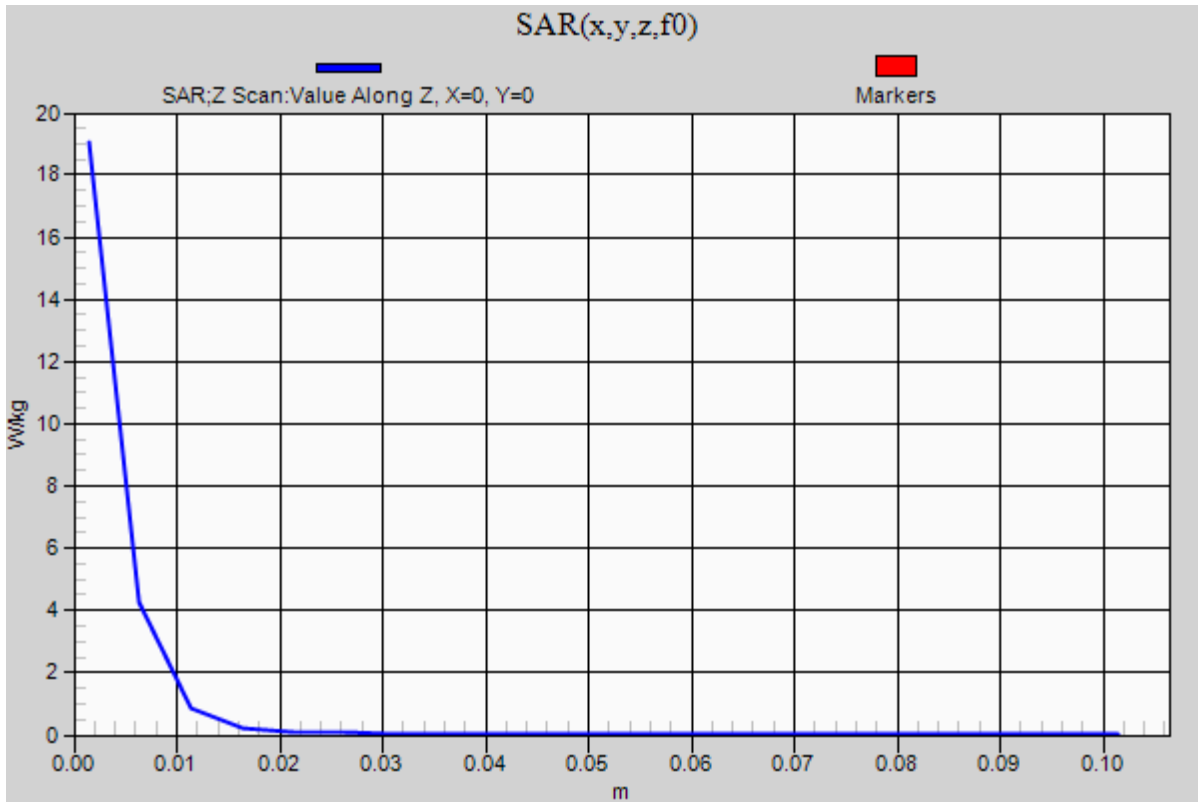
### 20150125\_System check\_Diple5GHzv2 SN1004

Frequency: 5200 MHz; Duty Cycle: 1:1

**Body/5200MHz,Pin=100mW,d=10mm/Z Scan (1x1x21):** Measurement grid: dx=20mm, dy=20mm, dz=5mm

Info: [Interpolated medium parameters used for SAR evaluation.](#)

Maximum value of SAR (measured) = 19.0 W/kg



## 20150125\_System check\_Diple5GHzv2 SN1004

Frequency: 5300 MHz; Duty Cycle: 1:1; Room Ambient Temperature: 24.5°C; Liquid Temperature: 24.0°C

Medium parameters used:  $f = 5300.2 \text{ MHz}$ ;  $\sigma = 5.435 \text{ S/m}$ ;  $\epsilon_r = 50.237$ ;  $\rho = 1000 \text{ kg/m}^3$

DASY5 Configuration:

- Area Scan Setting - Find Secondary Maximum Within: 2.0 dB and with a peak SAR value greater than 0.0012W/kg
- Electronics: DAE4 Sn877; Calibrated: 2014/03/26
- Probe: EX3DV4 - SN3665; ConvF(4.23, 4.23, 4.23); Calibrated: 2014/05/22;
- Sensor-Surface: 1.4mm (Mechanical Surface Detection (Locations From Previous Scan Used)), Sensor-Surface: 1.4mm (Mechanical Surface Detection)
- Phantom: ELI 4.0; Type: QDOVA001BA; Serial: 1056

**Body/5300MHz,Pin=100mW,d=10mm/Area Scan (7x7x1):** Measurement grid: dx=10mm, dy=10mm

Maximum value of SAR (measured) = 22.2 W/kg

**Body/5300MHz,Pin=100mW,d=10mm/Zoom Scan (7x7x6)/Cube 0:** Measurement grid: dx=4mm, dy=4mm, dz=1.4mm

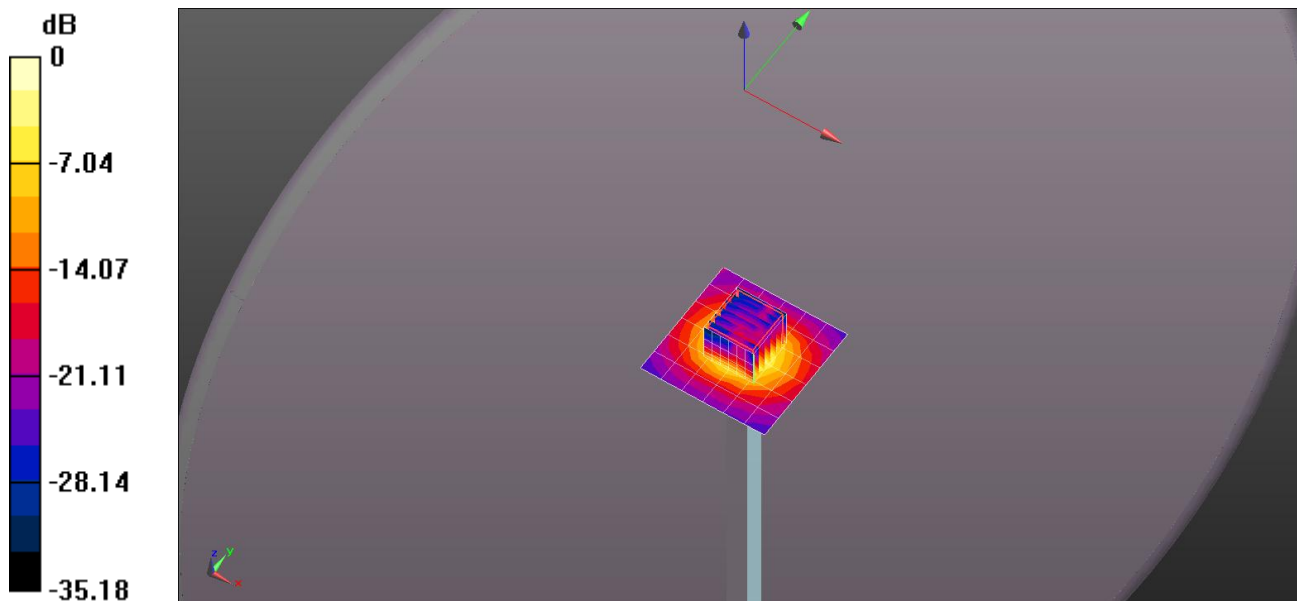
Reference Value = 44.14 V/m; Power Drift = -0.06 dB

Peak SAR (extrapolated) = 30.1 W/kg

Peak SAR (extrapolated) = 30.1 W/kg

**SAR(1 g) = 7.75 W/kg; SAR(10 g) = 2.26 W/kg**

Maximum value of SAR (measured) = 19.5 W/kg



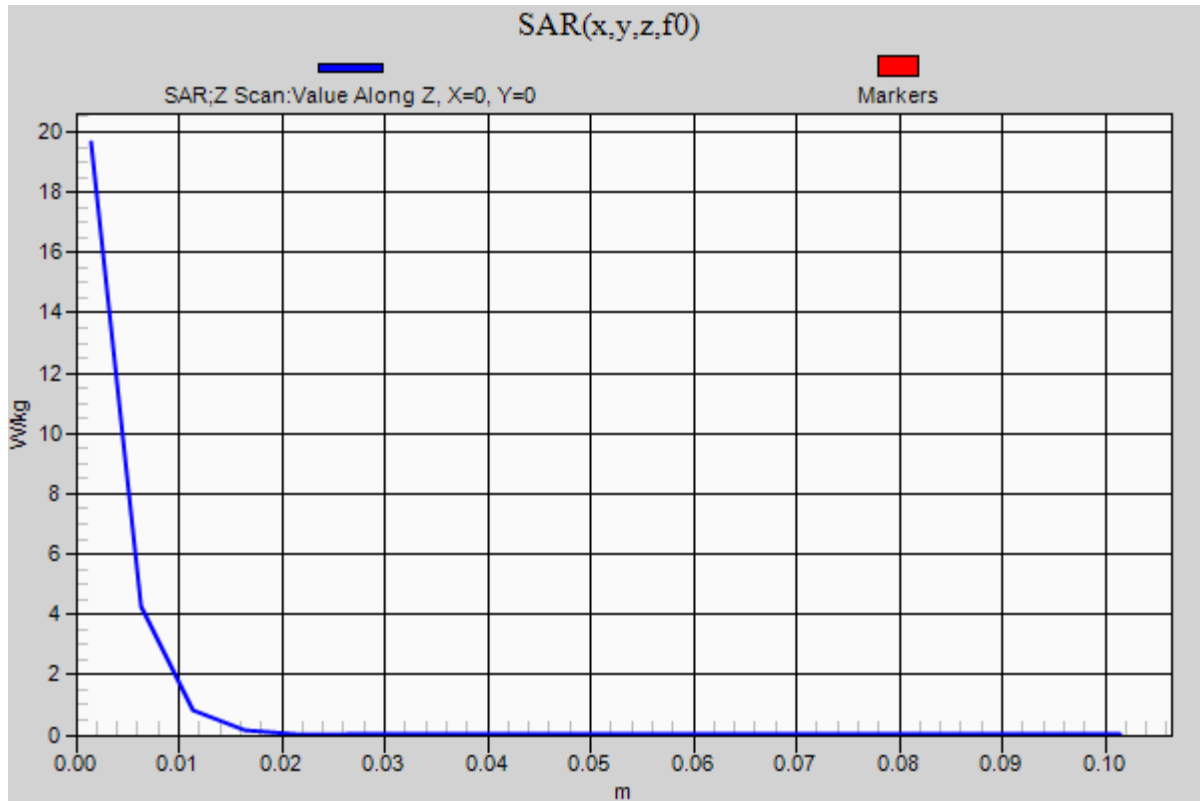
0 dB = 19.5 W/kg = 12.90 dBW/kg

### 20150125\_System check\_Diple5GHzv2 SN1004

Frequency: 5300 MHz; Duty Cycle: 1:1

**Body/5300MHz,Pin=100mW,d=10mm/Z Scan (1x1x21):** Measurement grid: dx=20mm, dy=20mm, dz=5mm

Maximum value of SAR (measured) = 19.6 W/kg



## 20150125\_System check\_Diple5GHzv2 SN1004

Frequency: 5600 MHz; Duty Cycle: 1:1; Room Ambient Temperature: 24.5°C; Liquid Temperature: 24.0°C

Medium parameters used:  $f = 5600.5$  MHz;  $\sigma = 5.75$  S/m;  $\epsilon_r = 49.892$ ;  $\rho = 1000$  kg/m<sup>3</sup>

DASY5 Configuration:

- Area Scan Setting - Find Secondary Maximum Within: 2.0 dB and with a peak SAR value greater than 0.0012W/kg
- Electronics: DAE4 Sn877; Calibrated: 2014/03/26
- Probe: EX3DV4 - SN3665; ConvF(3.82, 3.82, 3.82); Calibrated: 2014/05/22;
- Sensor-Surface: 1.4mm (Mechanical Surface Detection)
- Phantom: ELI 4.0; Type: QDOVA001BA; Serial: 1056

**Body/5600MHz,Pin=100mW,d=10mm/Area Scan (7x7x1):** Measurement grid: dx=10mm, dy=10mm

Maximum value of SAR (measured) = 23.7 W/kg

**Body/5600MHz,Pin=100mW,d=10mm/Zoom Scan (7x7x6)/Cube 0:** Measurement grid: dx=4mm,

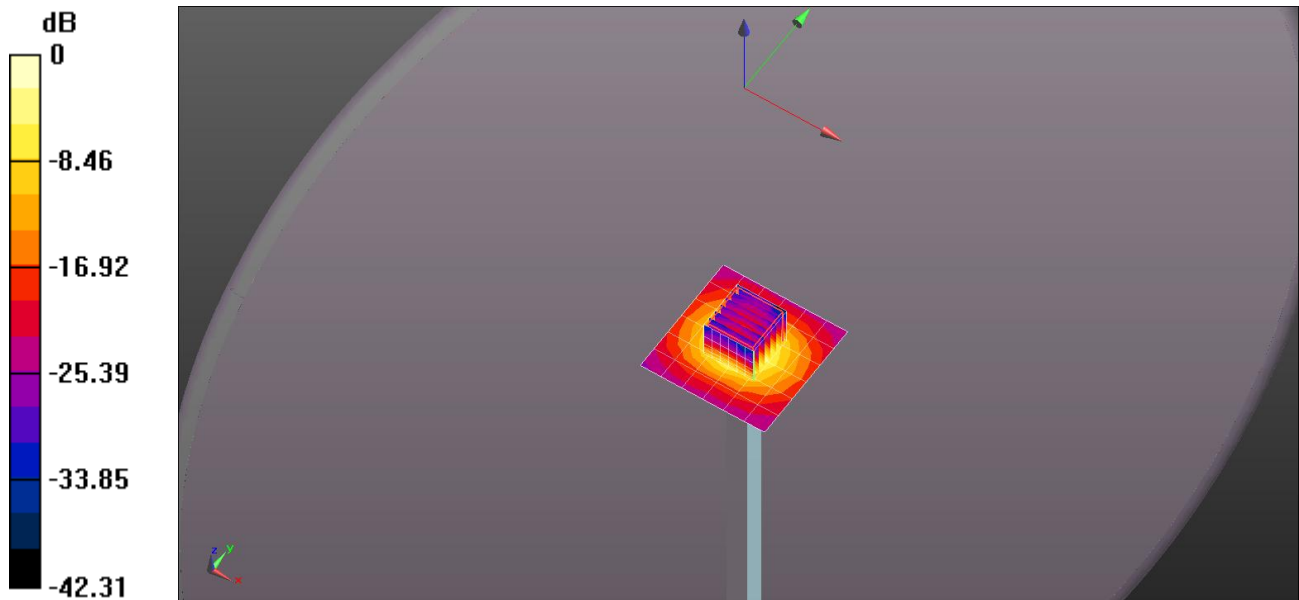
dy=4mm, dz=1.4mm

Reference Value = 43.11 V/m; Power Drift = -0.03 dB

Peak SAR (extrapolated) = 34.6 W/kg

**SAR(1 g) = 8.24 W/kg; SAR(10 g) = 2.35 W/kg**

Maximum value of SAR (measured) = 21.4 W/kg



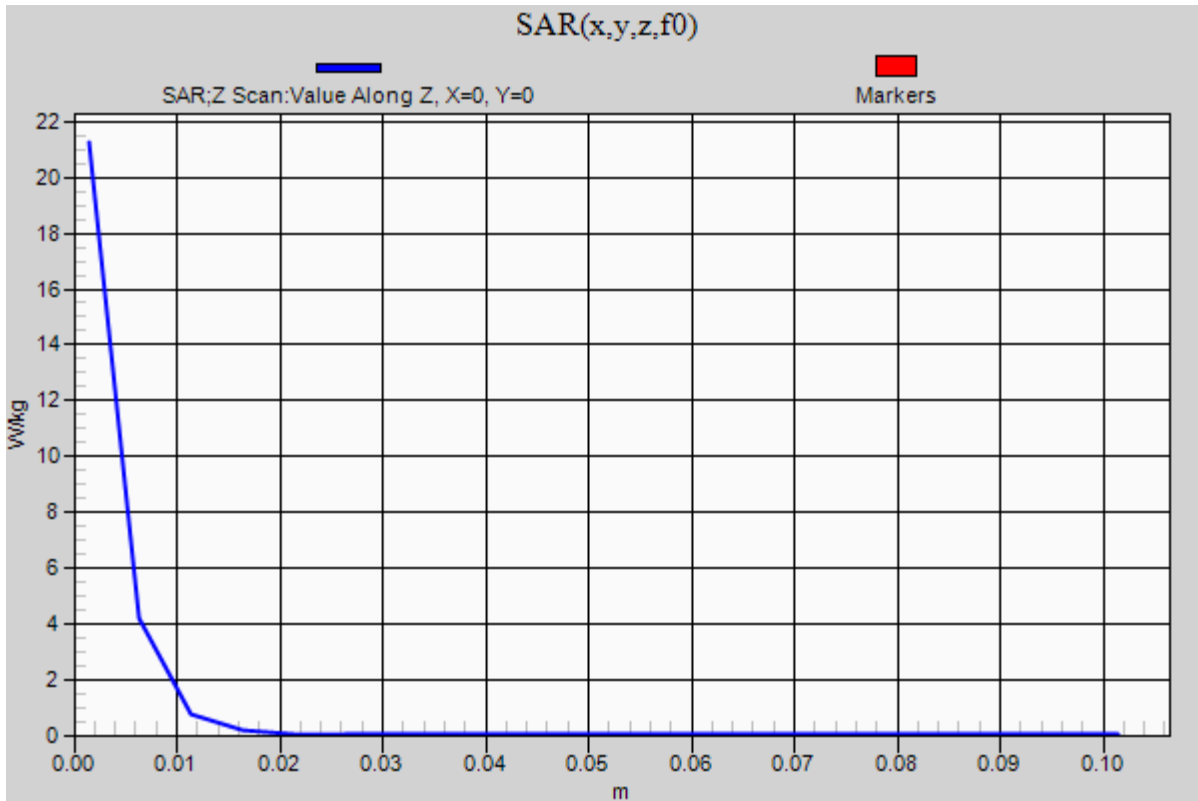
0 dB = 21.4 W/kg = 13.30 dBW/kg

### 20150125\_System check\_Diple5GHzv2 SN1004

Frequency: 5600 MHz; Duty Cycle: 1:1

**Body/5600MHz,Pin=100mW,d=10mm/Z Scan (1x1x21):** Measurement grid: dx=20mm, dy=20mm, dz=5mm

Maximum value of SAR (measured) = 21.3 W/kg



## 20150125\_System check\_Diple5GHzv2 SN1004(58)

Frequency: 5800 MHz; Duty Cycle: 1:1; Room Ambient Temperature: 24.5°C; Liquid Temperature: 24.0°C

Medium parameters used (interpolated):  $f = 5800$  MHz;  $\sigma = 6.033$  S/m;  $\epsilon_r = 49.65$ ;  $\rho = 1000$  kg/m<sup>3</sup>

DASY5 Configuration:

- Area Scan Setting - Find Secondary Maximum Within: 2.0 dB and with a peak SAR value greater than 0.0012W/kg
- Electronics: DAE4 Sn877; Calibrated: 2014/03/26
- Probe: EX3DV4 - SN3665; ConvF(4.22, 4.22, 4.22); Calibrated: 2014/05/22;
- Sensor-Surface: 1.4mm (Mechanical Surface Detection)
- Phantom: ELI 4.0; Type: QDOVA001BA; Serial: 1056

**Body/5800MHz,Pin=100mW,d=10mm 3 2/Area Scan (7x7x1):** Measurement grid: dx=10mm, dy=10mm

[Info: Interpolated medium parameters used for SAR evaluation.](#)

Maximum value of SAR (measured) = 21.4 W/kg

**Body/5800MHz,Pin=100mW,d=10mm 3 2/Zoom Scan (7x7x6)/Cube 0:** Measurement grid: dx=4mm, dy=4mm, dz=1.4mm

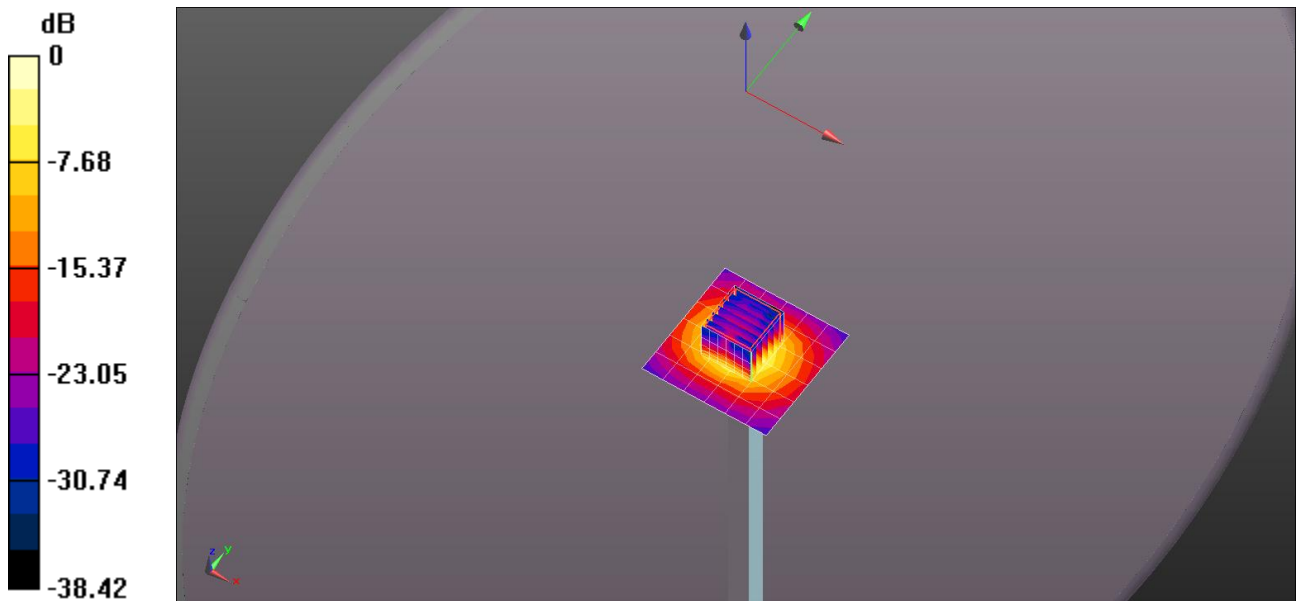
Reference Value = 39.68 V/m; Power Drift = -0.01 dB

Peak SAR (extrapolated) = 33.0 W/kg

**SAR(1 g) = 7.43 W/kg; SAR(10 g) = 2.11 W/kg**

[Info: Interpolated medium parameters used for SAR evaluation.](#)

Maximum value of SAR (measured) = 19.8 W/kg



0 dB = 19.8 W/kg = 12.97 dBW/kg

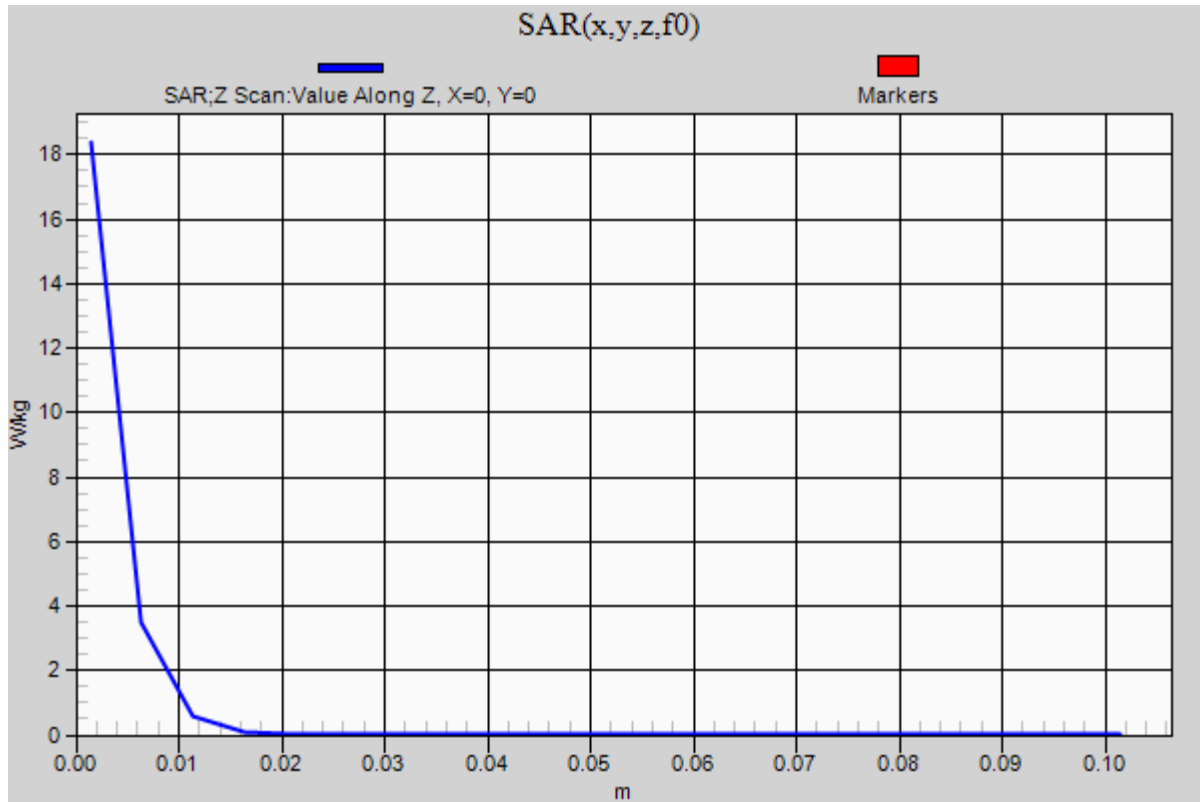
### 20150125\_System check\_Diple5GHzv2 SN1004(58)

Frequency: 5800 MHz; Duty Cycle: 1:1

**Body/5800MHz,Pin=100mW,d=10mm 3 2/Z Scan (1x1x21):** Measurement grid: dx=20mm, dy=20mm, dz=5mm

Info: [Interpolated medium parameters used for SAR evaluation.](#)

Maximum value of SAR (measured) = 18.4 W/kg





**20150126\_System check\_Diple2450v2 SN728**

Frequency: 2450 MHz; Duty Cycle: 1:1; Room Ambient Temperature: 24.0°C; Liquid Temperature: 23.5°C

Medium parameters used (interpolated):  $f = 2450$  MHz;  $\sigma = 1.912$  S/m;  $\epsilon_r = 51.832$ ;  $\rho = 1000$  kg/m<sup>3</sup>

DASY5 Configuration:

- Area Scan Setting - Find Secondary Maximum Within: 2.0 dB and with a peak SAR value greater than 0.0012W/kg
- Electronics: DAE4 Sn877; Calibrated: 2014/03/26
- Probe: EX3DV4 - SN3665; ConvF(7.22, 7.22, 7.22); Calibrated: 2014/05/22;
- Sensor-Surface: 1.4mm (Mechanical Surface Detection)
- Phantom: ELI 4.0; Type: QDOVA001BA; Serial: 1056

**Body/Pin=100mW, d=10mm/Area Scan (7x9x1):** Measurement grid: dx=15mm, dy=15mm

[Info: Interpolated medium parameters used for SAR evaluation.](#)

Maximum value of SAR (measured) = 7.60 W/kg

**Body/Pin=100mW, d=10mm/Zoom Scan (7x7x7)/Cube 0:** Measurement grid: dx=5mm, dy=5mm, dz=5mm

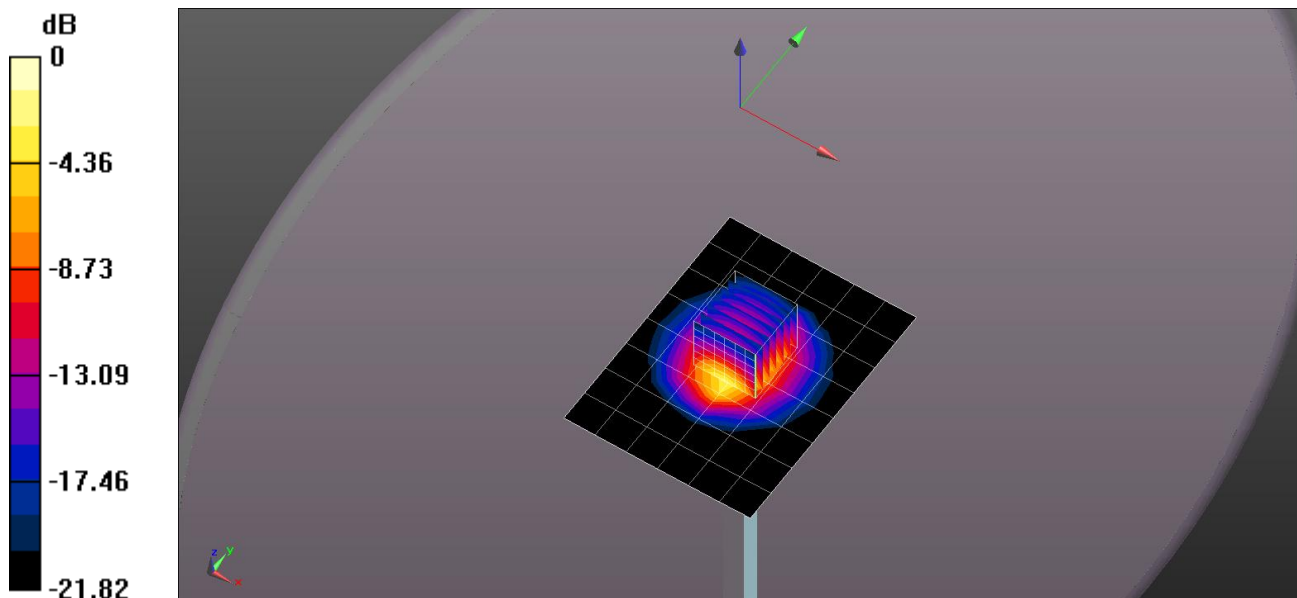
Reference Value = 64.59 V/m; Power Drift = -0.09 dB

Peak SAR (extrapolated) = 10.1 W/kg

**SAR(1 g) = 4.83 W/kg; SAR(10 g) = 2.25 W/kg**

[Info: Interpolated medium parameters used for SAR evaluation.](#)

Maximum value of SAR (measured) = 8.07 W/kg



0 dB = 8.07 W/kg = 9.07 dBW/kg

### 20150126\_System check\_Diple2450v2 SN728

Frequency: 2450 MHz; Duty Cycle: 1:1

**Body/Pin=100mW, d=10mm/Z Scan (1x1x11):** Measurement grid: dx=20mm, dy=20mm, dz=10mm

Info: [Interpolated medium parameters used for SAR evaluation.](#)

Maximum value of SAR (measured) = 4.39 W/kg

