

20150117_System check_Diple5GHzv2 SN1004

Frequency: 5200 MHz; Duty Cycle: 1:1; Room Ambient Temperature: 25.0°C; Liquid Temperature: 24.0°C

Medium parameters used (interpolated): $f = 5200$ MHz; $\sigma = 5.26$ mho/m; $\epsilon_r = 51$; $\rho = 1000$ kg/m³ ;

DASY4 Configuration:

- Area Scan setting - Find Secondary Maximum Within: 2.0 dB and with a peak SAR value greater than 0.0012W/kg
- Electronics: DAE4 Sn558; Calibrated: 7/22/2014
- Probe: EX3DV4 - SN3554; ConvF(4.02, 4.02, 4.02); Calibrated: 9/24/2014
- Sensor-Surface: 2.5mm (Mechanical Surface Detection)
- Phantom: Flat Phantom ELI4.0; Type: QDOVA001BA; Serial: SN: 1052

Body/5200MHz,Pin=100mW,d= 2/Area Scan (7x7x1): Measurement grid: dx=10mm, dy=10mm

[Info: Interpolated medium parameters used for SAR evaluation.](#)

Maximum value of SAR (measured) = 17.4 mW/g

Body/5200MHz,Pin=100mW,d= 2/Zoom Scan (8x8x9)/Cube 0: Measurement grid: dx=4mm, dy=4mm, dz=2.5mm

Reference Value = 60.8 V/m; Power Drift = -0.034 dB

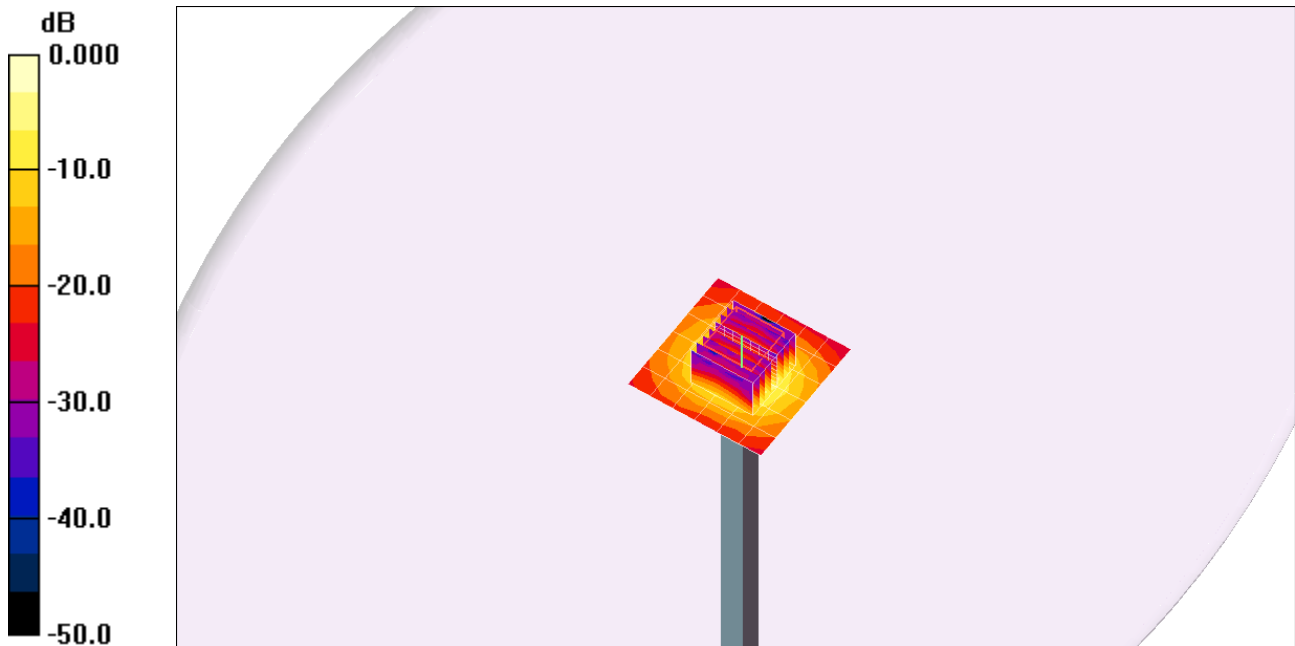
Peak SAR (extrapolated) = 30.4 W/kg

Peak SAR (extrapolated) = 30.4 W/kg

SAR(1 g) = 7.57 mW/g; SAR(10 g) = 2.14 mW/g

[Info: Interpolated medium parameters used for SAR evaluation.](#)

Maximum value of SAR (measured) = 13.4 mW/g



0 dB = 13.4mW/g

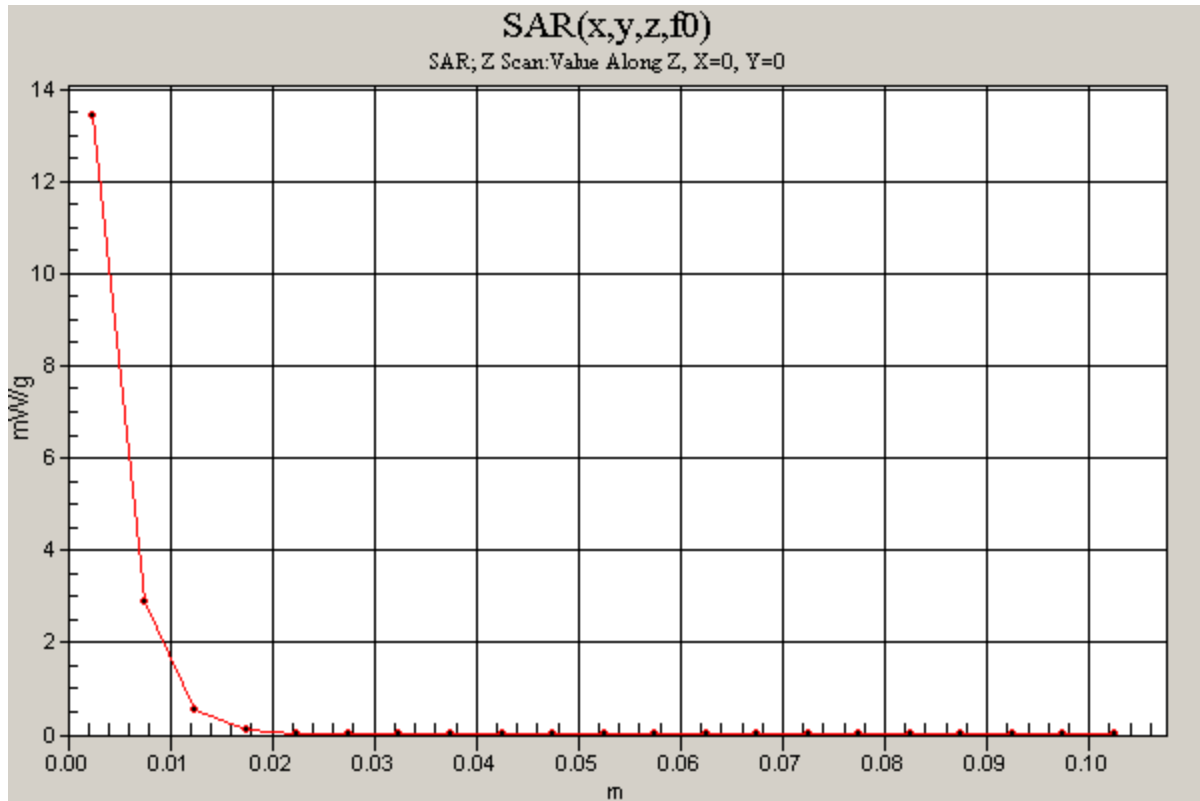
20150117_System check_Diple5GHzv2 SN1004

Frequency: 5200 MHz; Duty Cycle: 1:1

Body/5200MHz,Pin=100mW,d= 2/Z Scan (1x1x21): Measurement grid: dx=20mm, dy=20mm, dz=5mm

Info: [Interpolated medium parameters used for SAR evaluation.](#)

Maximum value of SAR (measured) = 13.4 mW/g



20150117_System check_Diple5GHzv2 SN1004

Frequency: 5300 MHz; Duty Cycle: 1:1; Room Ambient Temperature: 25.0°C; Liquid Temperature: 24.0°C

Medium parameters used: $f = 5300.2$ MHz; $\sigma = 5.39$ mho/m; $\epsilon_r = 50.8$; $\rho = 1000$ kg/m³ ;

DASY4 Configuration:

- Area Scan setting - Find Secondary Maximum Within: 2.0 dB and with a peak SAR value greater than 0.0012W/kg
- Electronics: DAE4 Sn558; Calibrated: 7/22/2014
- Probe: EX3DV4 - SN3554; ConvF(3.84, 3.84, 3.84); Calibrated: 9/24/2014
- Sensor-Surface: 2.5mm (Mechanical Surface Detection)
- Phantom: Flat Phantom ELI4.0; Type: QDOVA001BA; Serial: SN: 1052

Body/5300MHz,Pin=100mW,d= 2/Area Scan (7x7x1): Measurement grid: dx=10mm, dy=10mm

Maximum value of SAR (measured) = 13.8 mW/g

Body/5300MHz,Pin=100mW,d= 2/Zoom Scan (8x8x9)/Cube 0: Measurement grid: dx=4mm,

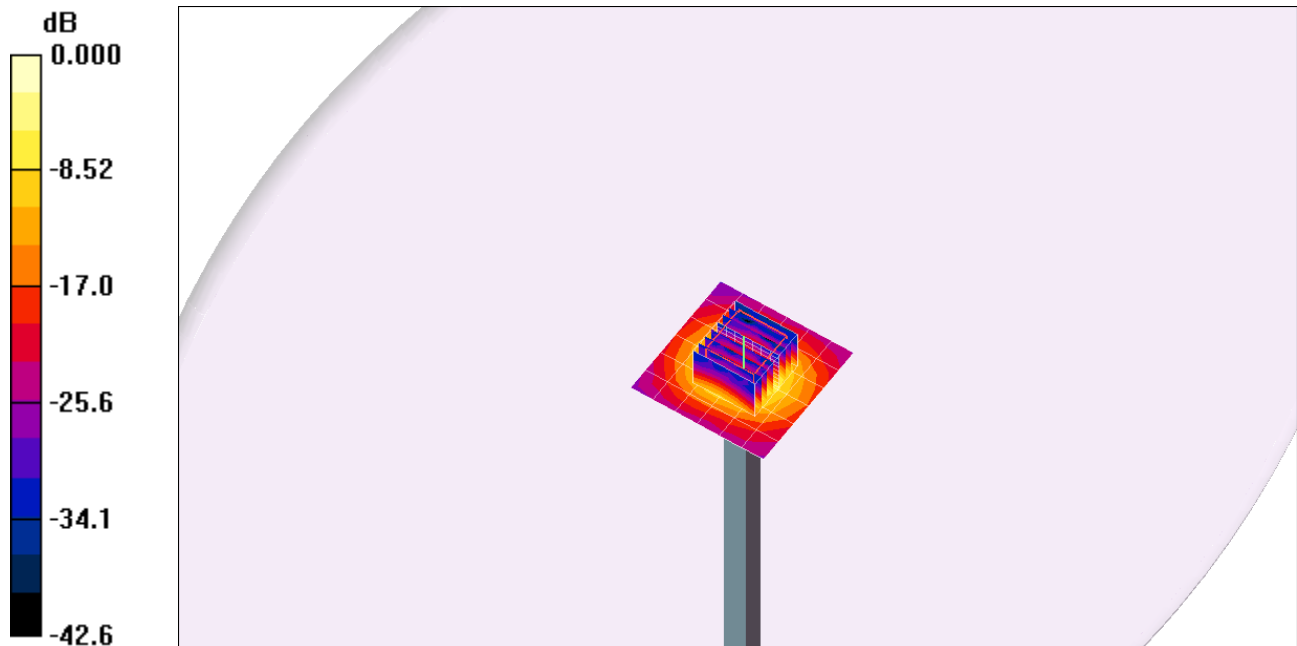
dy=4mm, dz=2.5mm

Reference Value = 53.4 V/m; Power Drift = -0.002 dB

Peak SAR (extrapolated) = 32.4 W/kg

SAR(1 g) = 7.87 mW/g; SAR(10 g) = 2.21 mW/g

Maximum value of SAR (measured) = 13.4 mW/g

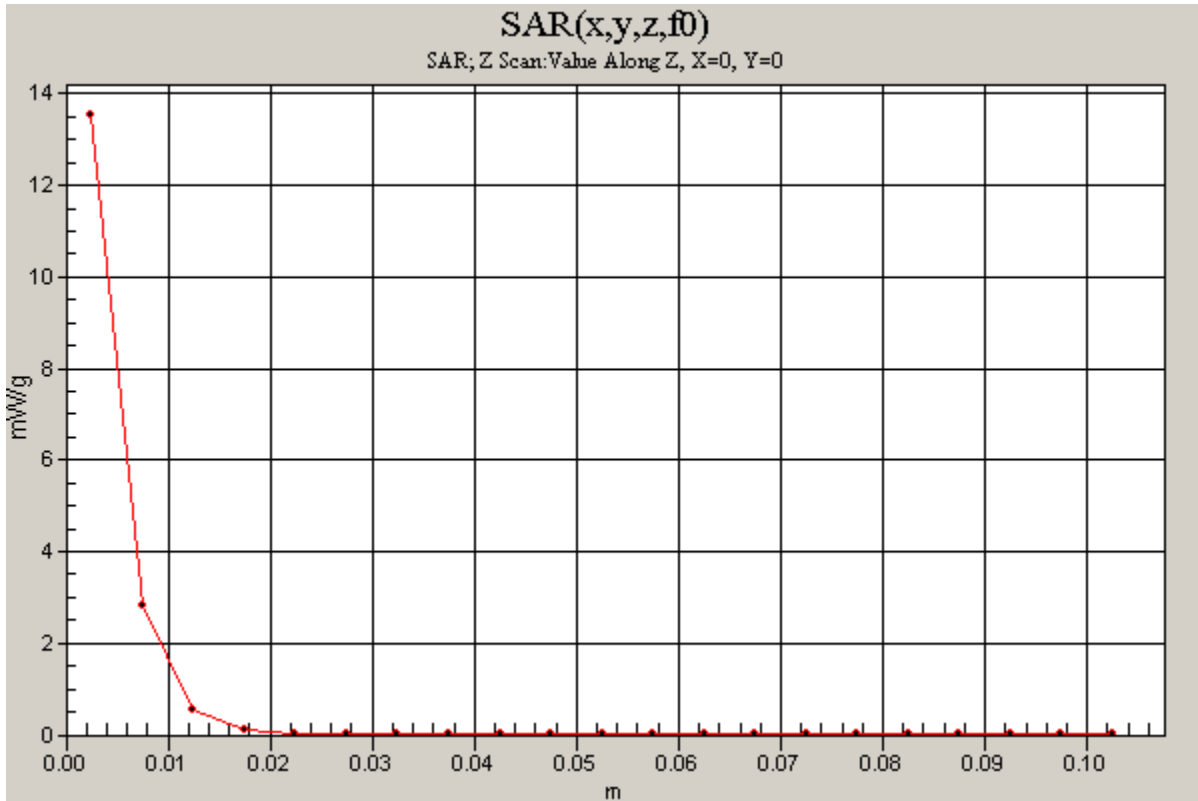


0 dB = 13.4mW/g

20150117_System check_Diple5GHzv2 SN1004

Frequency: 5300 MHz; Duty Cycle: 1:1

Body/5300MHz,Pin=100mW,d= 2/Z Scan (1x1x21): Measurement grid: dx=20mm, dy=20mm, dz=5mm
Maximum value of SAR (measured) = 13.5 mW/g



20150117_System check_Diple5GHzv2 SN1004

Frequency: 5600 MHz; Duty Cycle: 1:1; Room Ambient Temperature: 25.0°C; Liquid Temperature: 24.0°C

Medium parameters used: $f = 5600.5$ MHz; $\sigma = 5.77$ mho/m; $\epsilon_r = 50.3$; $\rho = 1000$ kg/m³ ;

DASY4 Configuration:

- Area Scan setting - Find Secondary Maximum Within: 2.0 dB and with a peak SAR value greater than 0.0012W/kg
- Electronics: DAE4 Sn558; Calibrated: 7/22/2014
- Probe: EX3DV4 - SN3554; ConvF(3.42, 3.42, 3.42); Calibrated: 9/24/2014
- Sensor-Surface: 2.5mm (Mechanical Surface Detection (Locations From Previous Scan Used))Sensor-Surface: 2.5mm (Mechanical Surface Detection)
- Phantom: Flat Phantom ELI4.0; Type: QDOVA001BA; Serial: SN: 1052

Body/5600MHz,Pin=100mW,d= 2/Area Scan (7x7x1): Measurement grid: dx=10mm, dy=10mm

Maximum value of SAR (measured) = 15.9 mW/g

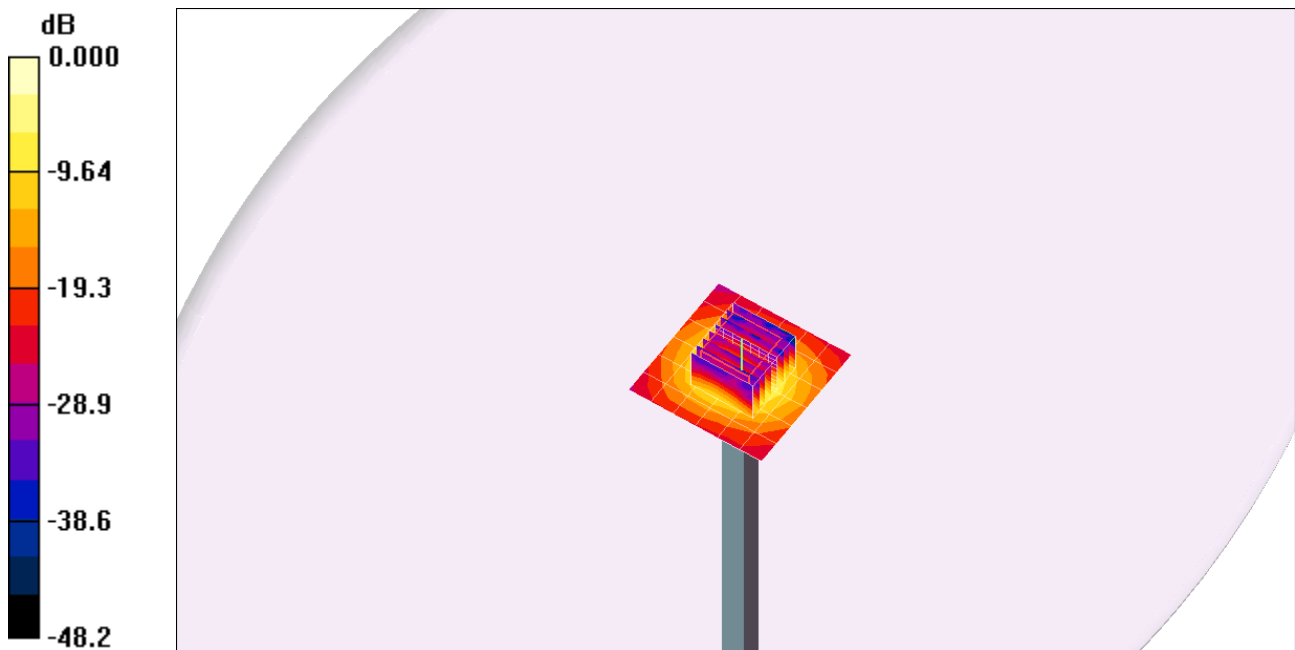
Body/5600MHz,Pin=100mW,d= 2/Zoom Scan (8x8x9)/Cube 0: Measurement grid: dx=4mm, dy=4mm, dz=2.5mm

Reference Value = 56.9 V/m; Power Drift = -0.093 dB

Peak SAR (extrapolated) = 33.2 W/kg

SAR(1 g) = 8.25 mW/g; SAR(10 g) = 2.33 mW/g

Maximum value of SAR (measured) = 14.1 mW/g

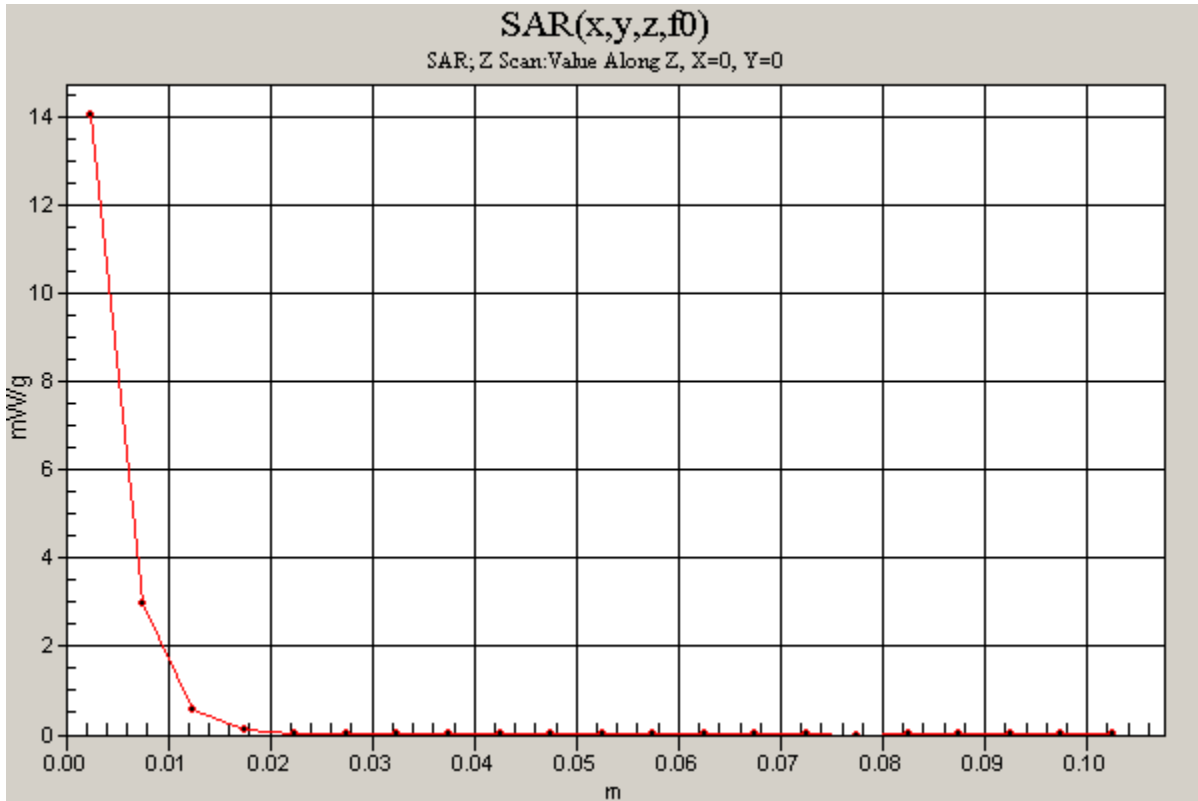


0 dB = 14.1mW/g

20150117_System check_Diple5GHzv2 SN1004

Frequency: 5600 MHz; Duty Cycle: 1:1

Body/5600MHz,Pin=100mW,d= 2/Z Scan (1x1x21): Measurement grid: dx=20mm, dy=20mm, dz=5mm
Maximum value of SAR (measured) = 14.0 mW/g



20150117_System check_Diple5GHzv2 SN1004

Frequency: 5800 MHz; Duty Cycle: 1:1; Room Ambient Temperature: 25.0°C; Liquid Temperature: 24.0°C

Medium parameters used (interpolated): $f = 5800$ MHz; $\sigma = 6.04$ mho/m; $\epsilon_r = 50$; $\rho = 1000$ kg/m³ ;

DASY4 Configuration:

- Area Scan setting - Find Secondary Maximum Within: 2.0 dB and with a peak SAR value greater than 0.0012W/kg
- Electronics: DAE4 Sn558; Calibrated: 7/22/2014
- Probe: EX3DV4 - SN3554; ConvF(3.57, 3.57, 3.57); Calibrated: 9/24/2014
- Sensor-Surface: 2.5mm (Mechanical Surface Detection)
- Phantom: Flat Phantom ELI4.0; Type: QDOVA001BA; Serial: SN: 1052

Body/5800MHz,Pin=100mW,d= 2/Area Scan (7x7x1): Measurement grid: dx=10mm, dy=10mm

[Info: Interpolated medium parameters used for SAR evaluation.](#)

Maximum value of SAR (measured) = 11.2 mW/g

Body/5800MHz,Pin=100mW,d= 2/Zoom Scan (8x8x9)/Cube 0: Measurement grid: dx=4mm, dy=4mm, dz=2.5mm

Reference Value = 46.2 V/m; Power Drift = 0.085 dB

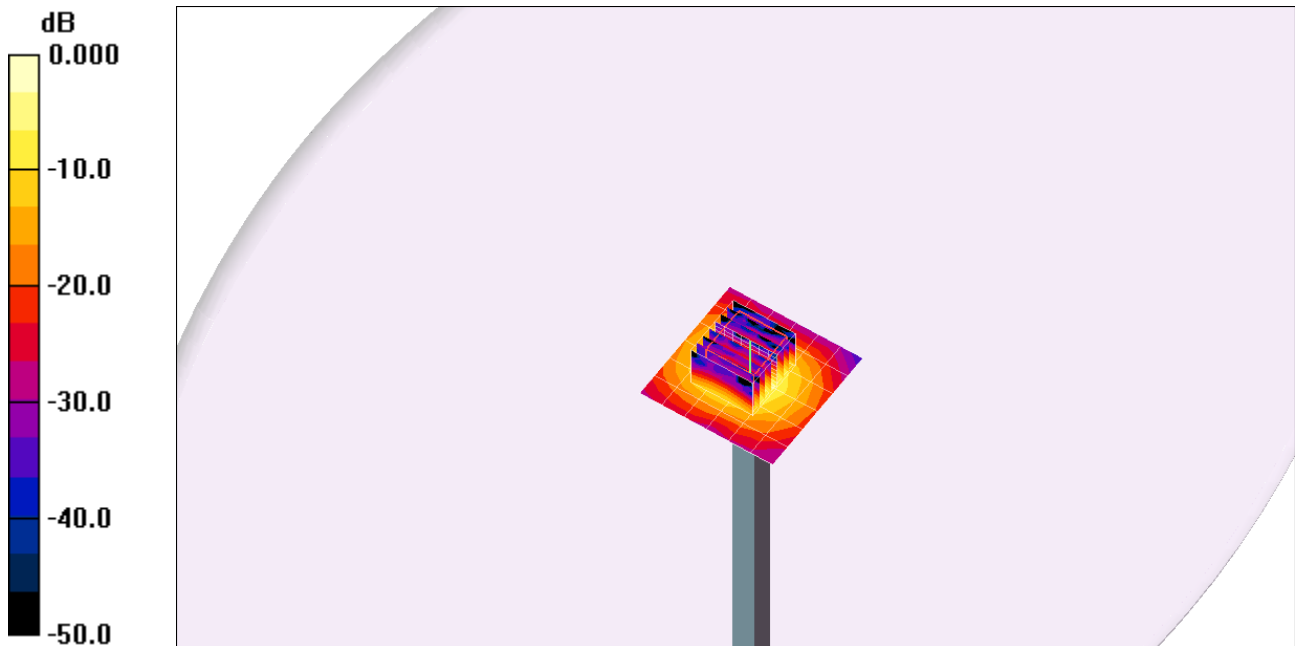
Peak SAR (extrapolated) = 30.8 W/kg

Peak SAR (extrapolated) = 30.8 W/kg

SAR(1 g) = 7.06 mW/g; SAR(10 g) = 2.02 mW/g

[Info: Interpolated medium parameters used for SAR evaluation.](#)

Maximum value of SAR (measured) = 12.3 mW/g



0 dB = 12.3mW/g

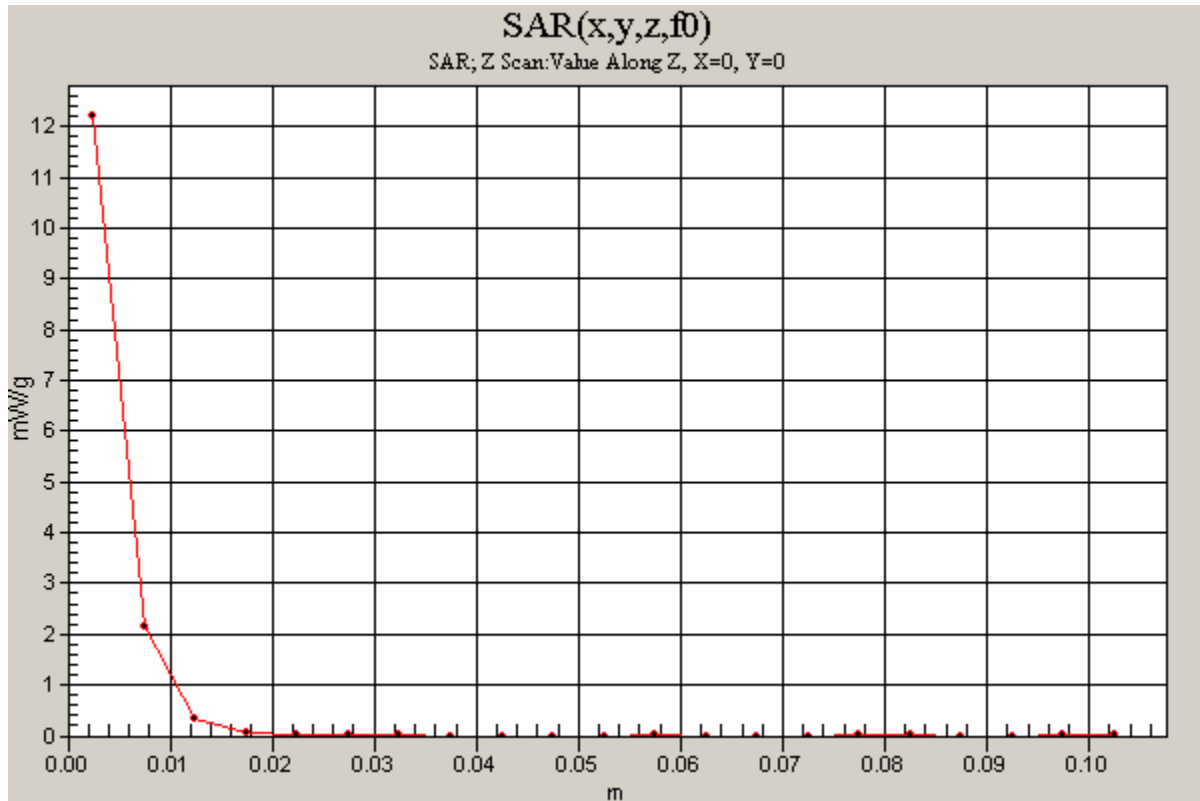
20150117_System check_Diple5GHzv2 SN1004

Frequency: 5800 MHz; Duty Cycle: 1:1

Body/5800MHz,Pin=100mW,d= 2/Z Scan (1x1x21): Measurement grid: dx=20mm, dy=20mm, dz=5mm

Info: [Interpolated medium parameters used for SAR evaluation.](#)

Maximum value of SAR (measured) = 12.2 mW/g



20150120_System Check_Dipole2450 sn728

Frequency: 2450 MHz; Duty Cycle: 1:1; Room Ambient Temperature: 24.0°C; Liquid Temperature: 23.0°C

Medium parameters used (interpolated): $f = 2450$ MHz; $\sigma = 1.89$ mho/m; $\epsilon_r = 52.7$; $\rho = 1000$ kg/m³ ;

DASY4 Configuration:

- Area Scan setting - Find Secondary Maximum Within: 2.0 dB and with a peak SAR value greater than 0.0012W/kg
- Electronics: DAE4 Sn558; Calibrated: 7/22/2014
- Probe: EX3DV4 - SN3554; ConvF(6.15, 6.15, 6.15); Calibrated: 9/24/2014
- Sensor-Surface: 2mm (Mechanical Surface Detection)
- Phantom: Flat Phantom ELI4.0; Type: QDOVA001BA; Serial: SN: 1052

Body/Pin=100mW, d=10mm/Area Scan (8x9x1): Measurement grid: dx=15mm, dy=15mm

[Info: Interpolated medium parameters used for SAR evaluation.](#)

Maximum value of SAR (measured) = 5.88 mW/g

Body/Pin=100mW, d=10mm/Zoom Scan (7x7x7)/Cube 0: Measurement grid: dx=5mm, dy=5mm, dz=5mm

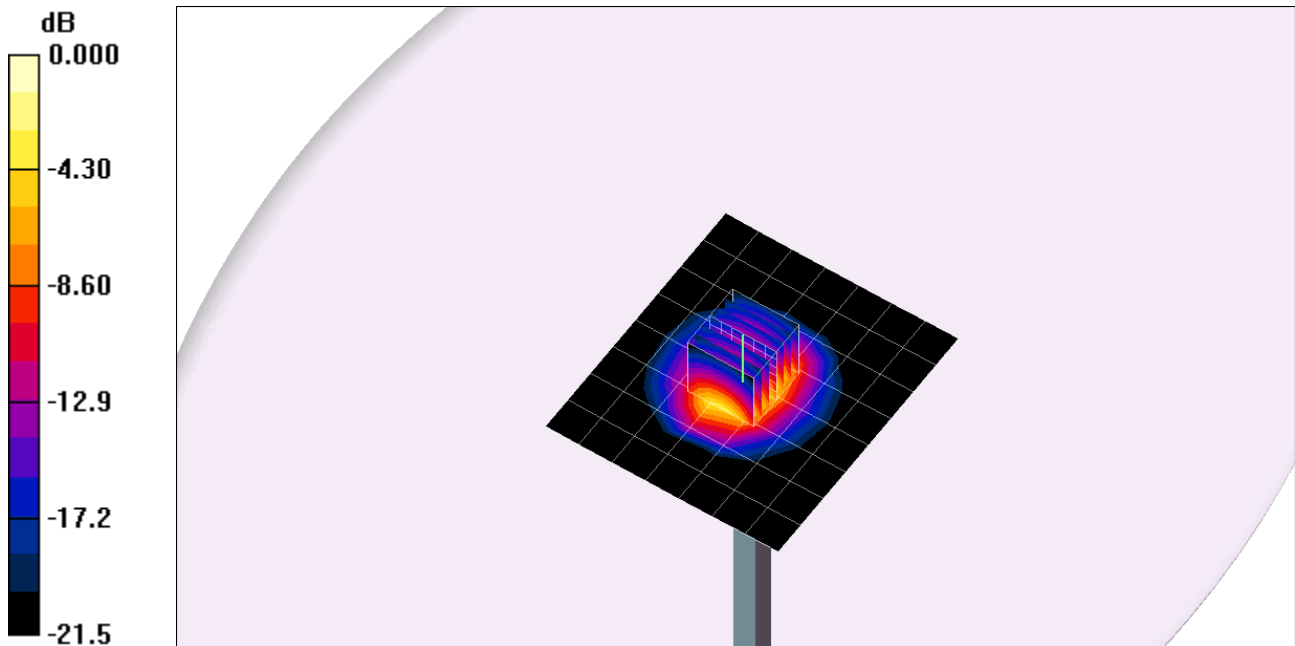
Reference Value = 61.2 V/m; Power Drift = 0.007 dB

Peak SAR (extrapolated) = 10.1 W/kg

SAR(1 g) = 4.87 mW/g; SAR(10 g) = 2.27 mW/g

[Info: Interpolated medium parameters used for SAR evaluation.](#)

Maximum value of SAR (measured) = 7.43 mW/g



0 dB = 7.43mW/g

20150120_System Check_Dipole2450 sn728

Frequency: 2450 MHz; Duty Cycle: 1:1

Body/Pin=100mW, d=10mm/Z Scan (1x1x21): Measurement grid: dx=20mm, dy=20mm, dz=5mm

Info: [Interpolated medium parameters used for SAR evaluation.](#)

Maximum value of SAR (measured) = 5.90 mW/g

