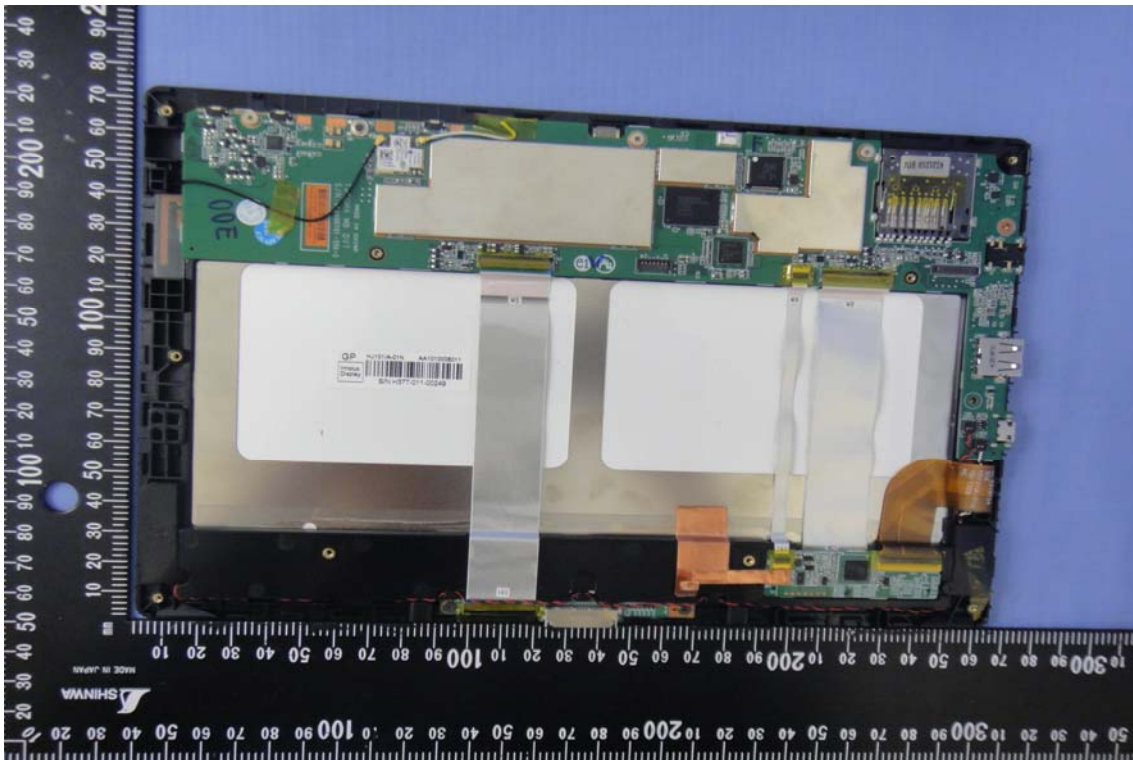
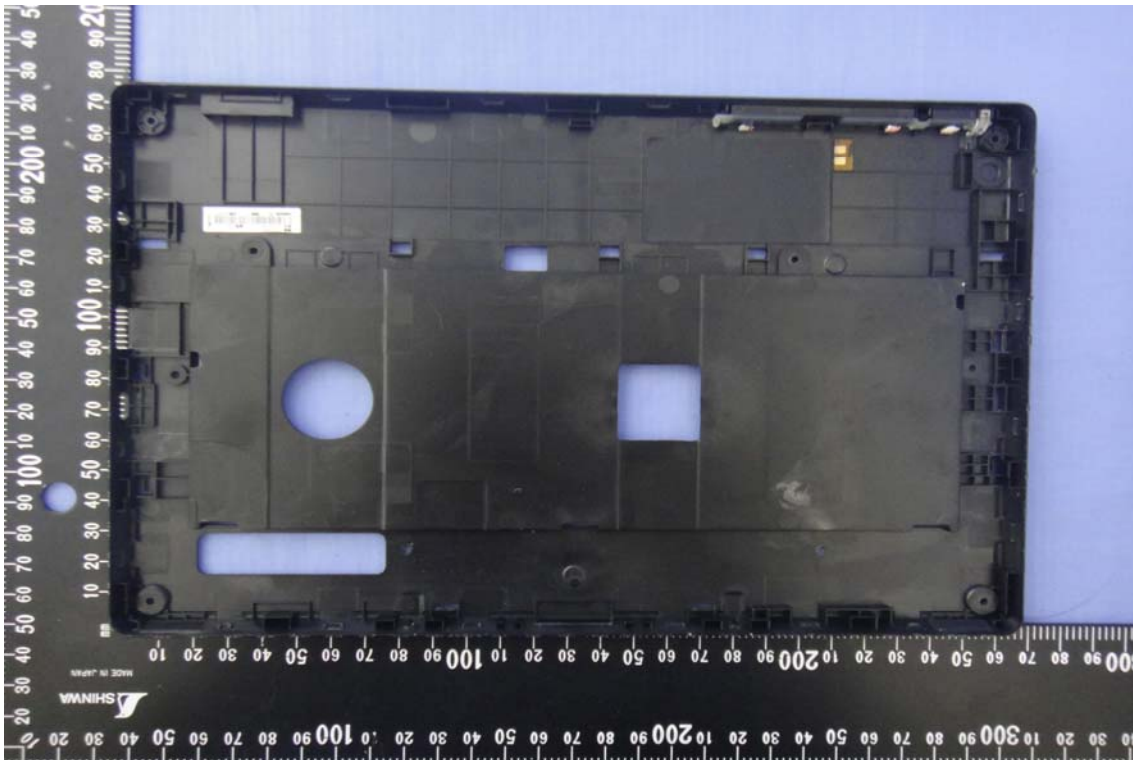




INTERNAL PHOTOGRAPHS OF EUT

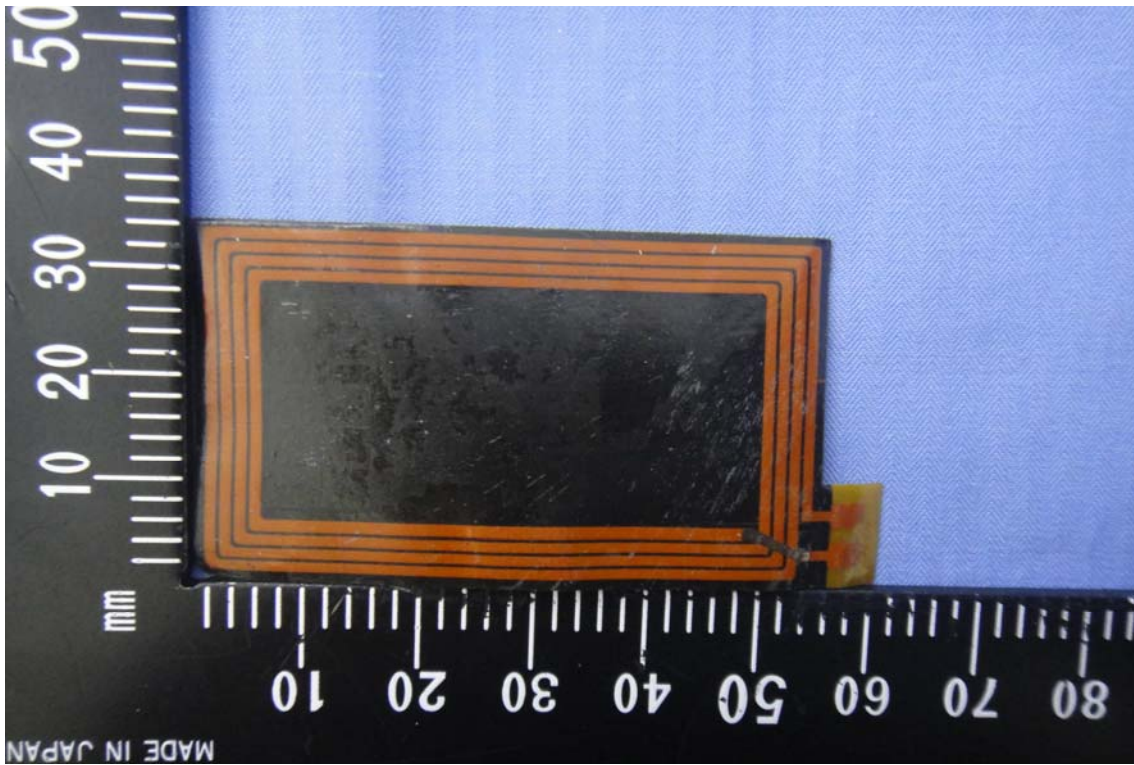




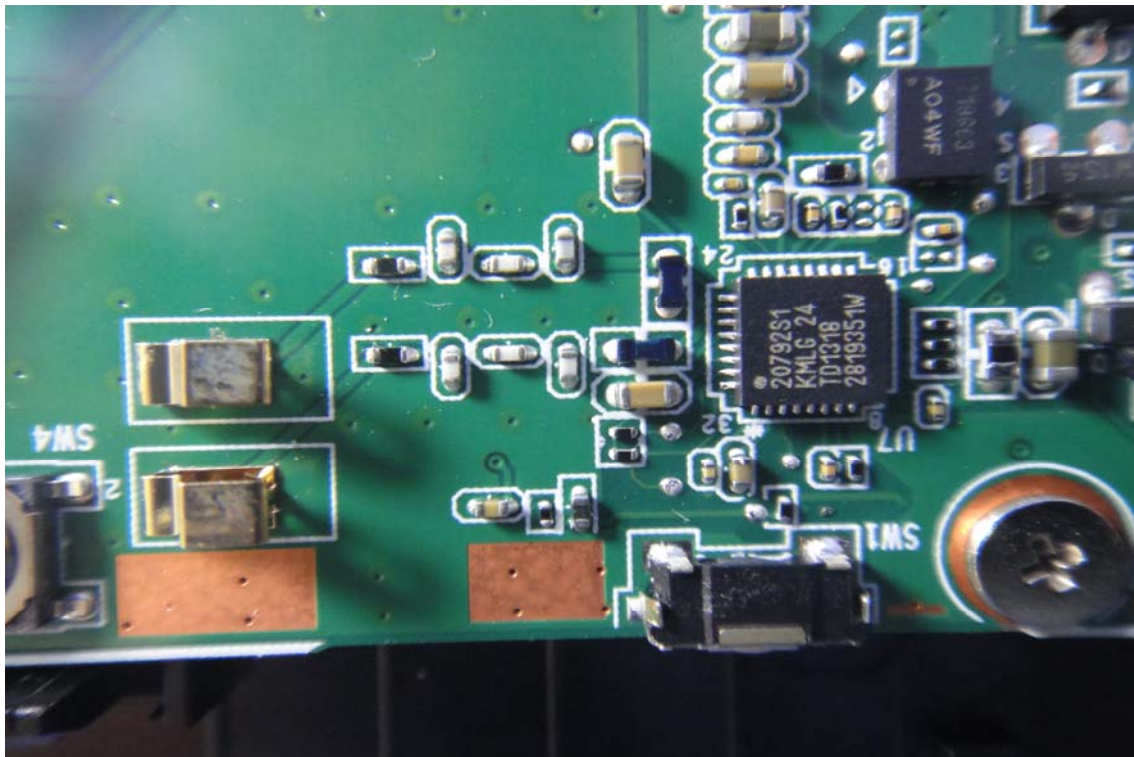




Antenna

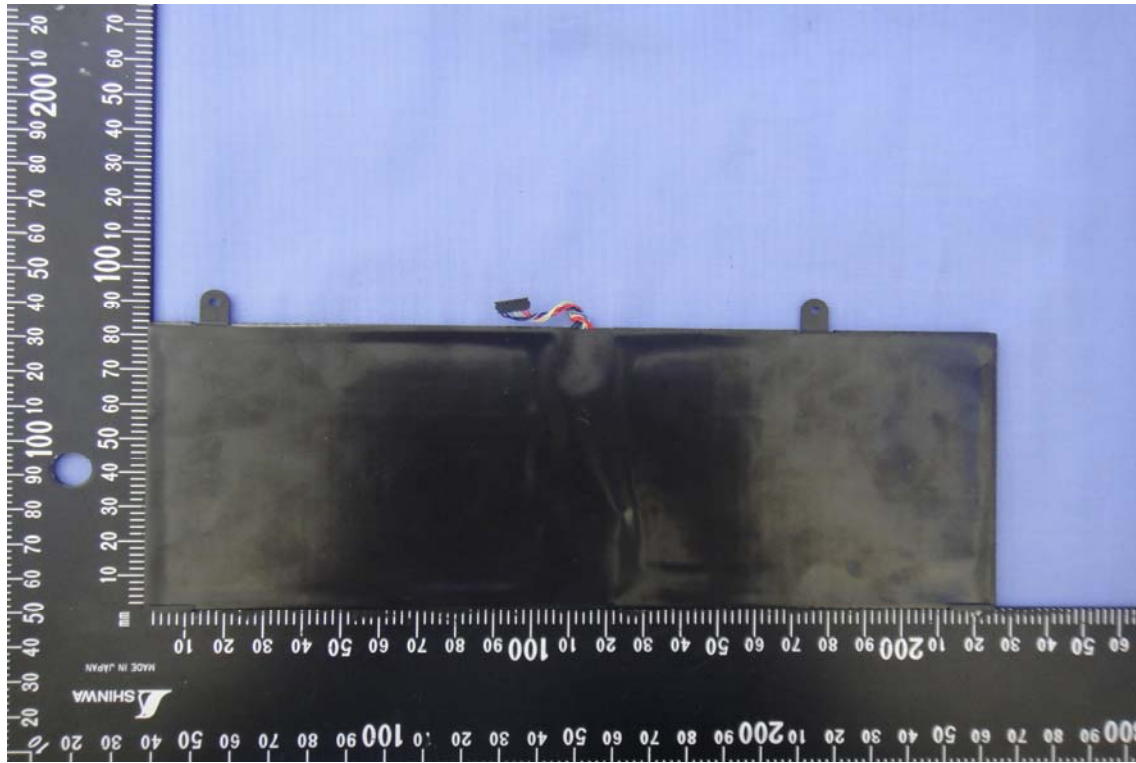


Module





Battery for TMX-S23W38V25A



Model (型号): TMX-S23W38V25A
Rating (电压): 3.8V, Capacity (容量): 6200mAh(23.56Wh)
Rechargeable Li-Polymer Battery

SMP P/N: GSBTA004F (11CP3/81/103-2)
Rechargeable smart battery must be recycled or disposed of properly.
Please refer to the user manual for disposal instructions.
可充电锂电池必须回收或妥善处理。请参考用户手册。
CAUTION: Leaking battery can be dangerous. There is a danger of explosion if the battery is incorrectly repaired. Do not attempt to disassemble, repair, recharge, or use the battery in any way not intended by the manufacturer. Dispose of used batteries according to state or local hazardous waste requirements.
注意警告: 漏液锂电池危险, 不当修理锂电池可能造成伤害, 请勿擅自修理, 请勿在手机上充电, 请勿在高温下充电, 请勿在高温下存放, 请勿短路, 请勿将锂电池投入火中, 请勿将锂电池投入水中, 请勿将锂电池投入垃圾桶, 请勿将锂电池投入下水道, 请勿将锂电池投入其他任何地方。
Battery voltage: China, Made in China by Sanyo 中国生产 三星 Sanyo 三星 Sanyo





Model (型号) : TMX-S23W38V25A
Rating (电压) : 3.8V \equiv Capacity (容量) : 6200mAh(23.56Wh)
Rechargeable Li-Polymer Battery
SMP P/N: G5BTA004F (1ICP3/81/103-2)

Rechargeable smart battery must be recycled or disposed of properly.
Read instruction in user guide before using this battery.
可充式电池请依规定回收或处理,使用前请参阅使用说明。

CAUTION: Li-polymer batteries can be dangerous. There is a danger of explosion if the battery is incorrectly replaced. Do not expose to fire or extreme high temperatures above 60 °C or in the water. To reduce the risk of fire or burns, do not disassemble, crush, puncture, or short external contacts. Dispose of used batteries according to state or local hazardous waste requirements.

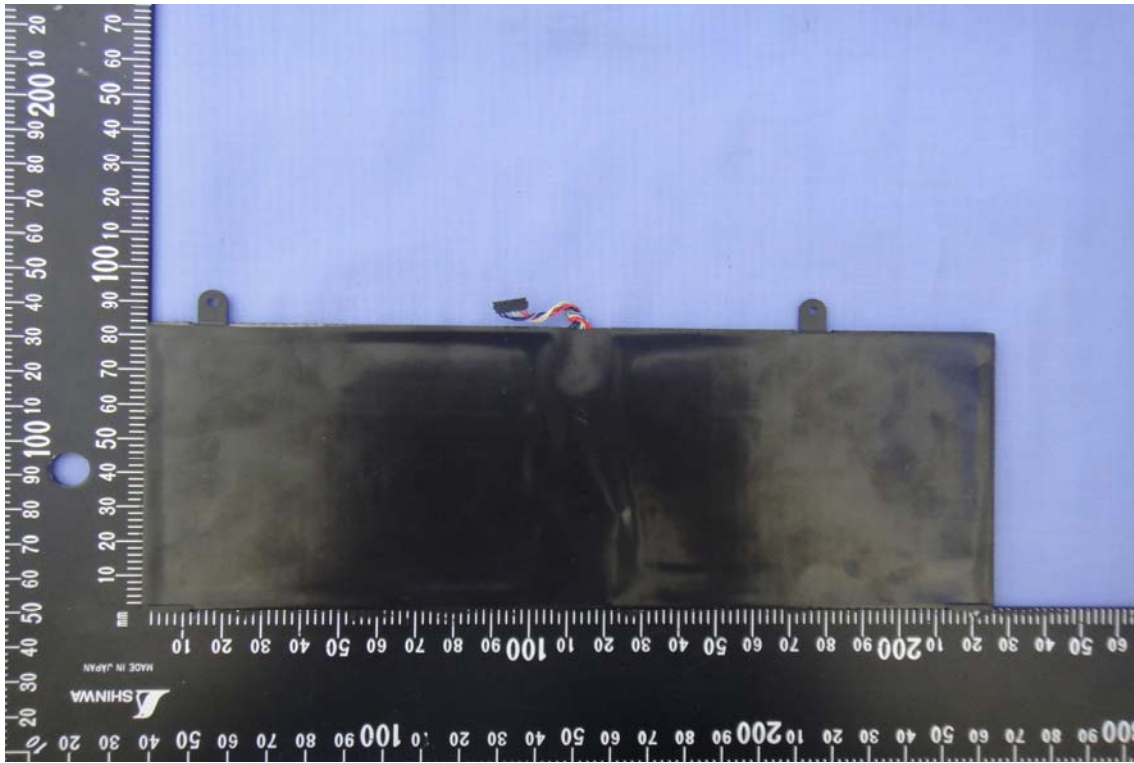
注意事项: 请正确使用
可能导致爆炸, 请勿
温或水中, 为避免引
拆卸、挤压、刺穿或
电池需请各有害物质
Battery cell origin China Ma



89020R800601G037310024 A01



Battery for TMX-S28W38V25A



Model (型号): TMX-S28W38V25A
 Rating (电压): 3.8V Capacity (容量): 7500mAh(28.5Wh)
 Rechargeable Li-Polymer Battery
 SMP PIN: GSBTA003F (11CP4/01/103-2)

Rechargeable smart battery should be recycled or disposed of properly.
 可充电智能锂电池应回收或妥善处理。

CAUTION: Improper handling can be dangerous. There is a danger of explosion if the battery is incorrectly replaced. Do not expose to fire or otherwise use for purposes not intended. To reduce the risk of injury, do not disassemble, crush, puncture, or short external contacts. Dispose of used batteries according to local or local hazardous waste requirements.
 注意：错误处理锂电池可能很危险。有爆炸的危险。如果电池被错误地更换，有爆炸的危险。请勿将电池暴露在火中或用于其他非预期用途。为了减少受伤的风险，请勿拆解、挤压、刺穿或短路外部触点。请根据当地或当地有害废物要求处理废旧电池。

EU 7888mAh

CE, RoHS, REACH, TUM, NRTL, US

99C20RB006010037310001 A01



Model (型号) : TMX-S28W38V25A
Rating (电压) : 3.8V == Capacity (容量) : 7500mAh(28.5Wh)
Rechargeable Li-Polymer Battery
SMP P/N: G5BTA003F (1ICP4/81/103-2)

Rechargeable smart battery must be recycled or disposed of properly.
Read instruction in user guide before using this battery.
可充式电池请依规定回收或处理,使用前请参阅使用说明。

CAUTION: Li-polymer batteries can be dangerous. There is a danger of explosion if the battery is incorrectly replaced. Do not expose to fire or extreme high temperatures above 60 °C or in the water. To reduce the risk of fire or burns, do not disassemble, crush, puncture, or short external contacts. Dispose of used batteries according to state or local hazardous waste requirements.

注意事项: 请正确使用电池, 不
可能导致爆炸, 请勿抛於火中、
温或水中, 为避免引起电池爆炸
拆卸、挤压、刺穿或使外部接点
电池需请各有害物质废弃处理单
Battery cell origin China Made in China by Sim



89020RB00601G03731001T A01