

**20130412\_System check\_Diple2450v2 SN728**

Frequency: 2450 MHz; Duty Cycle: 1:1; Room Ambient Temperature: 24.0°C; Liquid Temperature: 23.5°C

Medium parameters used (interpolated):  $f = 2450$  MHz;  $\sigma = 2.007$  S/m;  $\epsilon_r = 51.548$ ;  $\rho = 1000$  kg/m<sup>3</sup>

DASY5 Configuration:

- Area Scan Setting - Find Secondary Maximum Within: 2.0 dB and with a peak SAR value greater than 0.0012W/kg
- Electronics: DAE4 Sn558; Calibrated: 2012/07/19
- Probe: EX3DV4 - SN3554; ConvF(6.06, 6.06, 6.06); Calibrated: 2012/09/27;
- Sensor-Surface: 1.4mm (Mechanical Surface Detection)
- Phantom: ELI 4.0; Type: QDOVA001BA; Serial: 1056

**Body/Pin=100mW, d=10mm/Area Scan (7x9x1):** Measurement grid: dx=15mm, dy=15mm

[Info: Interpolated medium parameters used for SAR evaluation.](#)

Maximum value of SAR (measured) = 9.03 W/kg

**Body/Pin=100mW, d=10mm/Zoom Scan (7x7x7)/Cube 0:** Measurement grid: dx=5mm, dy=5mm, dz=5mm

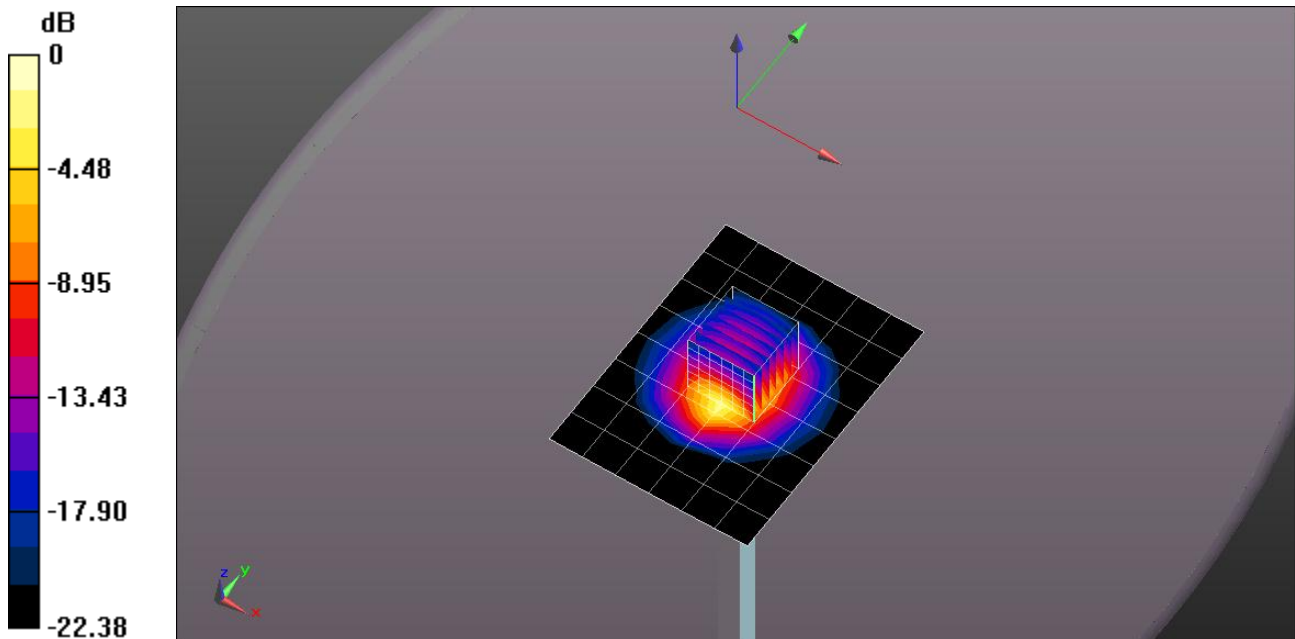
Reference Value = 69.515 V/m; Power Drift = -0.01 dB

Peak SAR (extrapolated) = 10.7 W/kg

**SAR(1 g) = 5.08 W/kg; SAR(10 g) = 2.36 W/kg**

[Info: Interpolated medium parameters used for SAR evaluation.](#)

Maximum value of SAR (measured) = 8.44 W/kg



0 dB = 8.44 W/kg = 9.26 dBW/kg

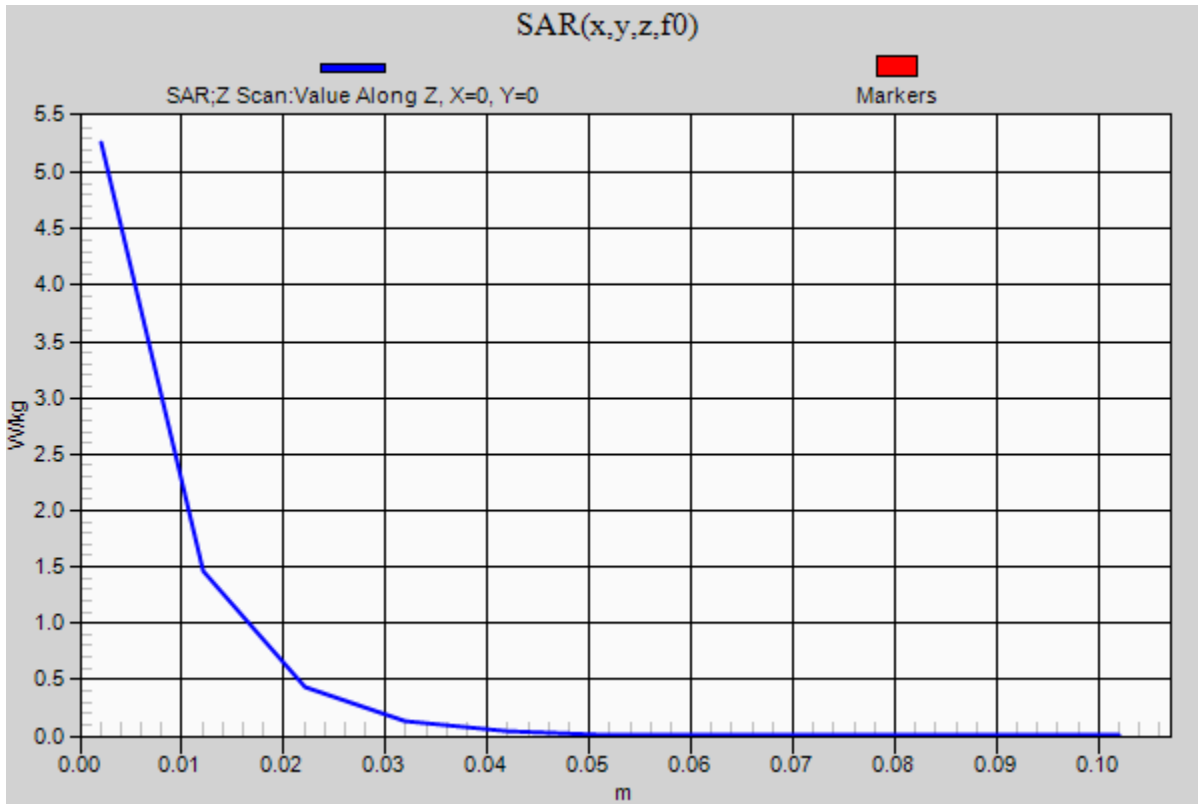
### 20130412\_System check\_Diple2450v2 SN728

Frequency: 2450 MHz; Duty Cycle: 1:1

**Body/Pin=100mW, d=10mm/Z Scan (1x1x11):** Measurement grid: dx=20mm, dy=20mm, dz=10mm

Info: [Interpolated medium parameters used for SAR evaluation.](#)

Maximum value of SAR (measured) = 5.26 W/kg



## 20130530\_System check\_Diple2450v2 SN728

Frequency: 2450 MHz; Duty Cycle: 1:1; Room Ambient Temperature: 24.0°C; Liquid Temperature: 23.5°C

Medium parameters used (interpolated):  $f = 2450$  MHz;  $\sigma = 1.953$  S/m;  $\epsilon_r = 50.925$ ;  $\rho = 1000$  kg/m<sup>3</sup>

DASY5 Configuration:

- Area Scan Setting - Find Secondary Maximum Within: 2.0 dB and with a peak SAR value greater than 0.0012W/kg
- Electronics: DAE4 Sn558; Calibrated: 2012/07/19
- Probe: EX3DV4 - SN3554; ConvF(6.06, 6.06, 6.06); Calibrated: 2012/09/27;
- Sensor-Surface: 1.4mm (Mechanical Surface Detection)
- Phantom: ELI 4.0; Type: QDOVA001BA; Serial: 1056

**Body/Pin=100mW, d=10mm/Area Scan (7x9x1):** Measurement grid: dx=15mm, dy=15mm

[Info: Interpolated medium parameters used for SAR evaluation.](#)

Maximum value of SAR (measured) = 8.56 W/kg

**Body/Pin=100mW, d=10mm/Zoom Scan (7x7x7)/Cube 0:** Measurement grid: dx=5mm, dy=5mm, dz=5mm

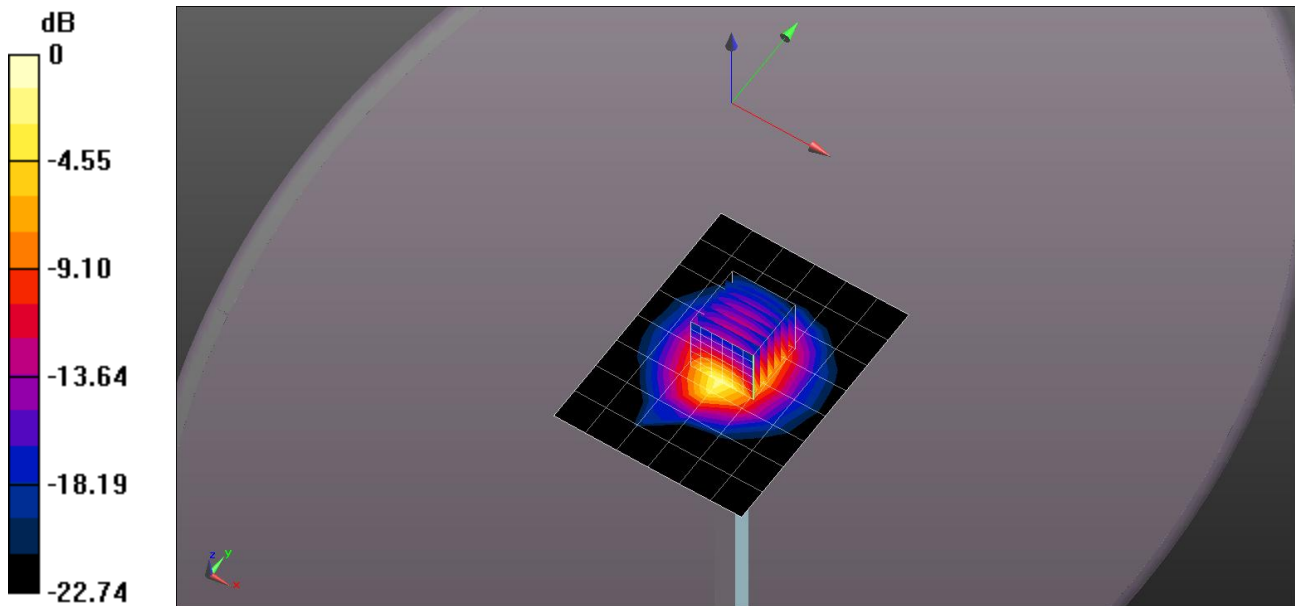
Reference Value = 67.737 V/m; Power Drift = -0.06 dB

Peak SAR (extrapolated) = 11.0 W/kg

**SAR(1 g) = 5.09 W/kg; SAR(10 g) = 2.37 W/kg**

[Info: Interpolated medium parameters used for SAR evaluation.](#)

Maximum value of SAR (measured) = 8.64 W/kg



0 dB = 8.64 W/kg = 9.37 dBW/kg

### 20130530\_System check\_Diple2450v2 SN728

Frequency: 2450 MHz; Duty Cycle: 1:1

**Body/Pin=100mW, d=10mm/Z Scan (1x1x11):** Measurement grid: dx=20mm, dy=20mm, dz=10mm

Info: [Interpolated medium parameters used for SAR evaluation.](#)

Maximum value of SAR (measured) = 4.92 W/kg

