

Test Laboratory: Compliance Certification Services Inc.

D2450V2 SN-728 Body

Communication System: CW; Frequency: 2450 MHz; Duty Cycle: 1:1

Medium parameters used: $f = 2450$ MHz; $\sigma = 1.942$ mho/m; $\epsilon_r = 51.572$; $\rho = 1000$ kg/m³

Phantom section: Flat Section

Air Temperature: 24.2 deg C; Liquid Temperature: 23.2 deg C

Area Scan Find Secondary Maximum Within 2dB and with a peak SAR value greater than 0.0012W/kg

DASY Configuration:

- Probe: EX3DV4 - SN3665; ConvF(7.47, 7.47, 7.47);
- Sensor-Surface: 4mm (Mechanical Surface Detection)
- Electronics: DAE4 Sn877; Calibrated: 3/18/2011
- Phantom: ELI 4.0; Type: QDOVA001BA; Serial: 1056
- Measurement SW: DASY52, Version 52.8 (0)SEMCAD X Version 14.6.4 (4989)

Configuration/Pin=250mW,d=10mm/Area Scan (7x9x1):

Measurement grid: dx=15mm, dy=15mm

Maximum value of SAR (measured) = 15.033 mW/g

Configuration/Pin=250mW,d=10mm/Zoom Scan (7x7x7)/Cube 0:

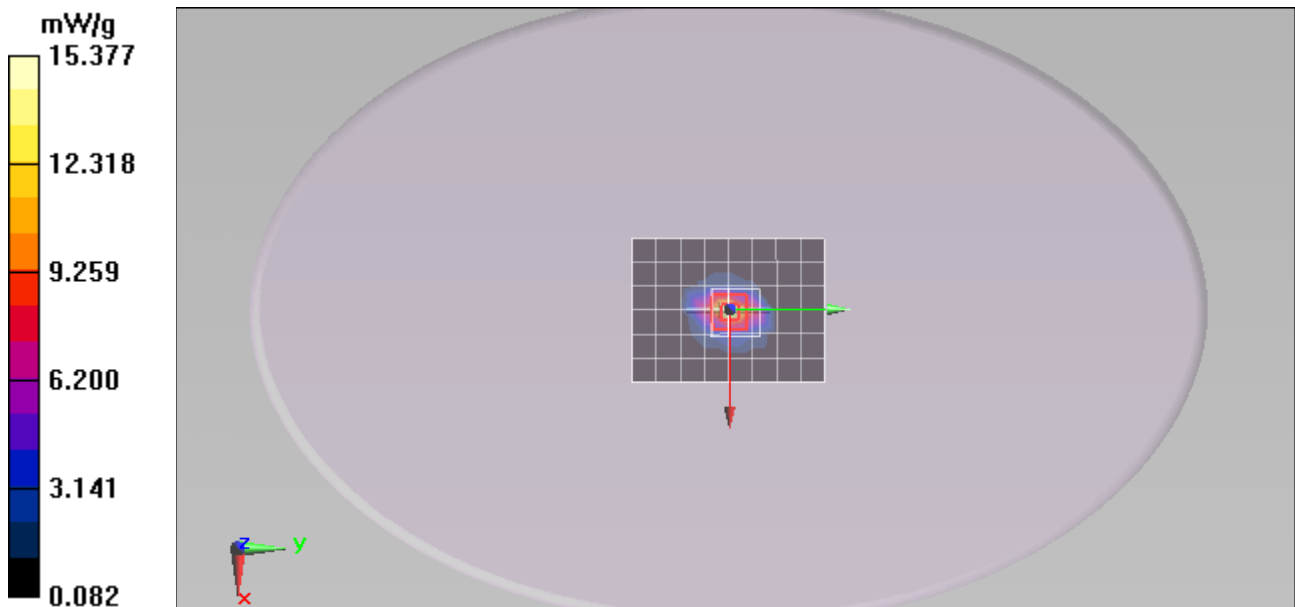
Measurement grid: dx=5mm, dy=5mm,
dz=5mm

Reference Value = 87.669 V/m; Power Drift = -0.02 dB

Peak SAR (extrapolated) = 27.3240

SAR(1 g) = 13.4 mW/g; SAR(10 g) = 6.18 mW/g

Maximum value of SAR (measured) = 15.377 mW/g



1g/10g Averaged SAR

