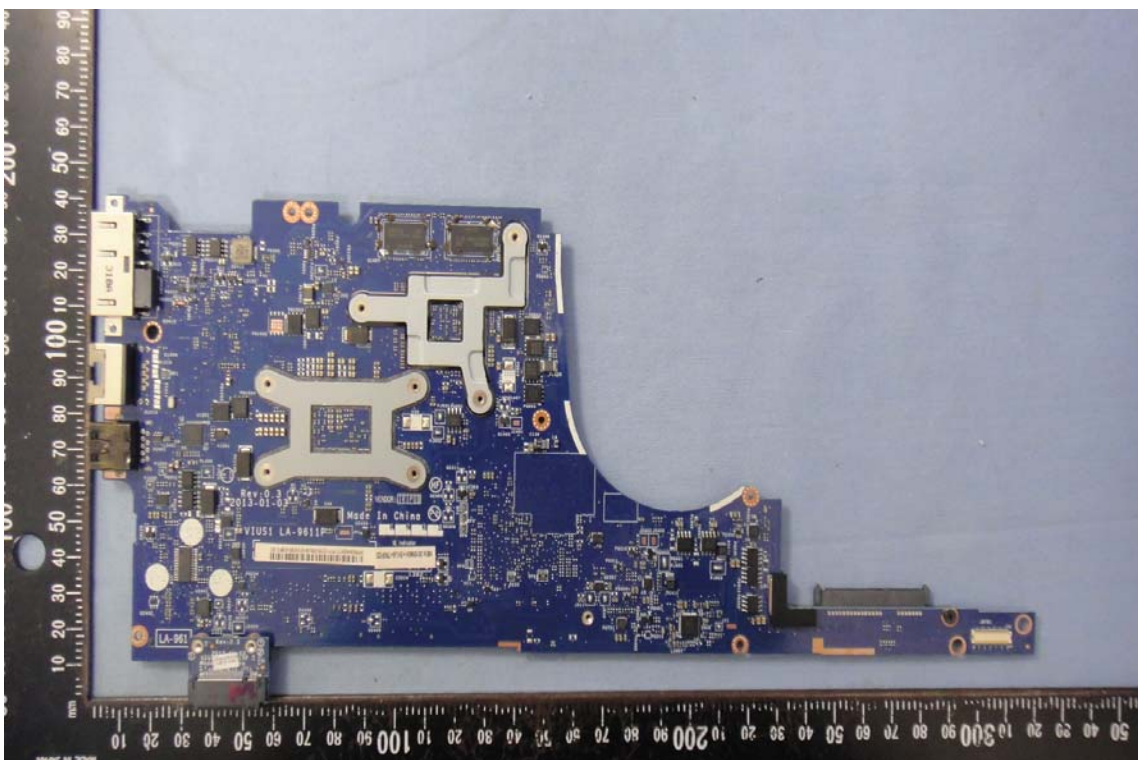
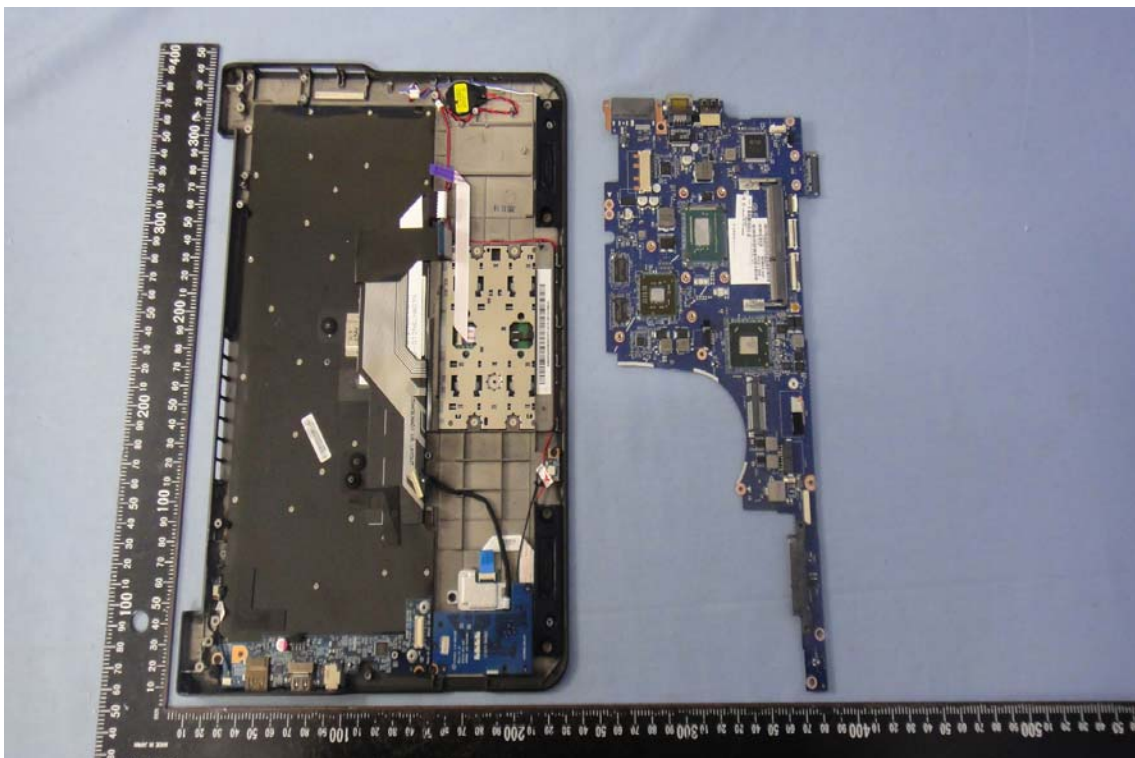


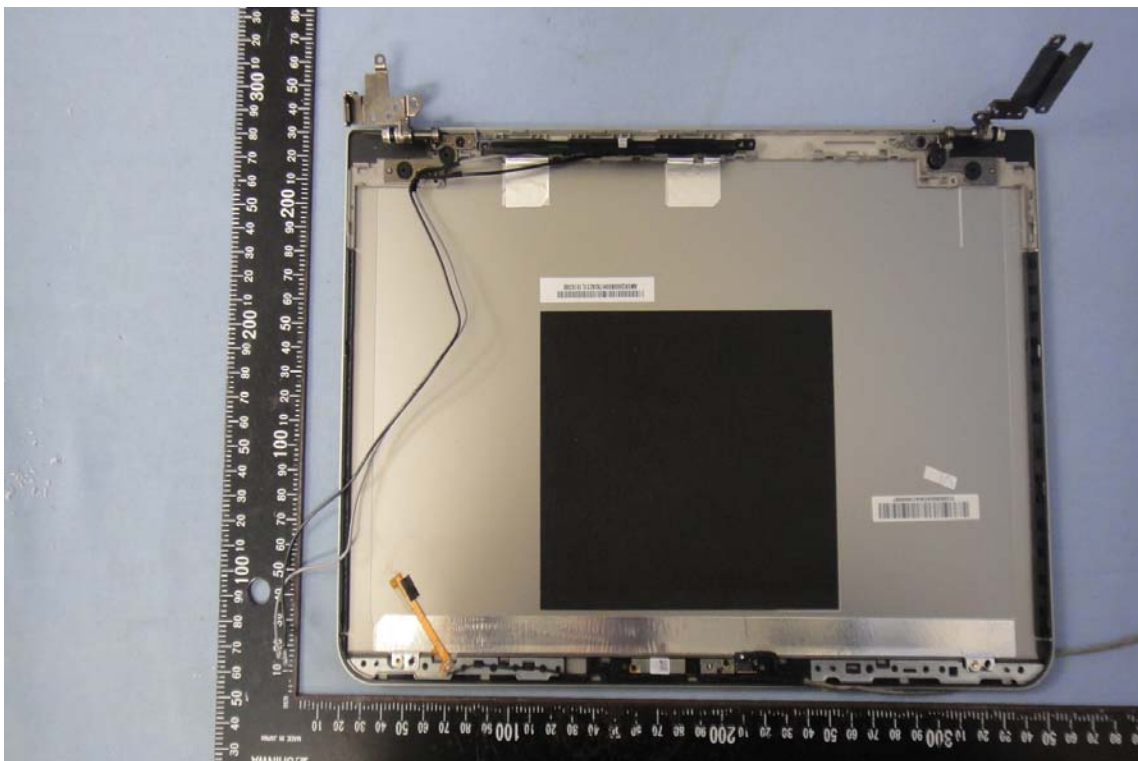
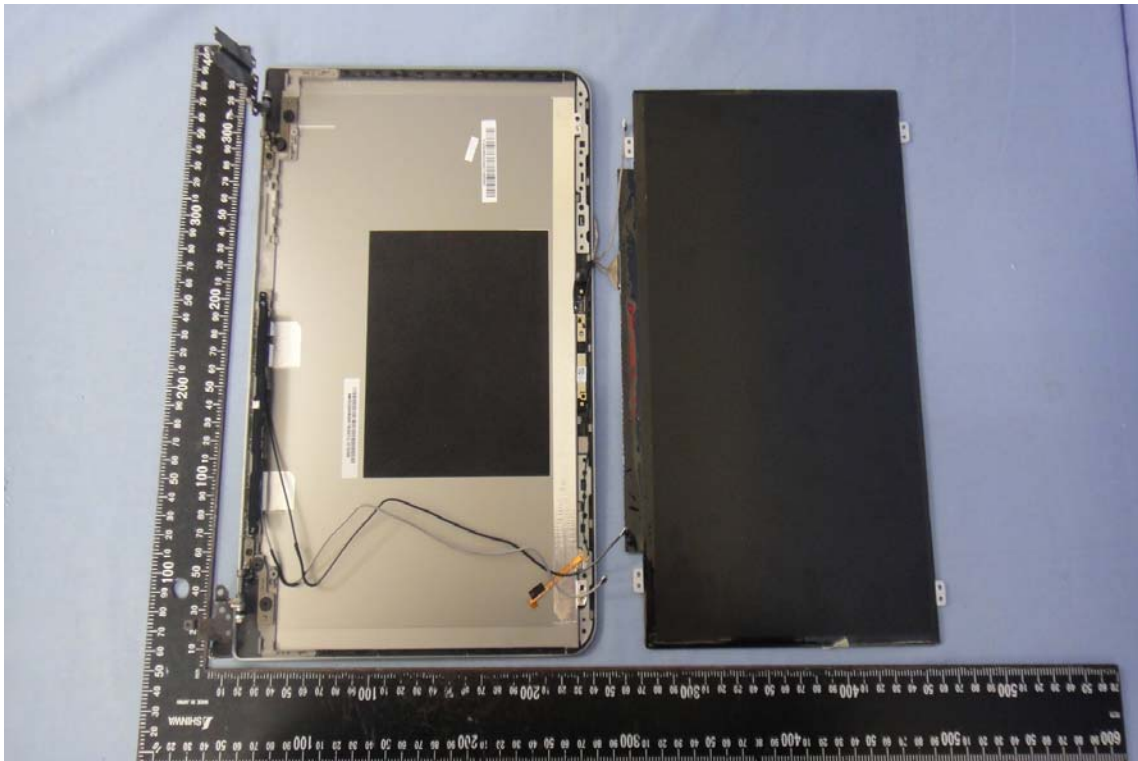


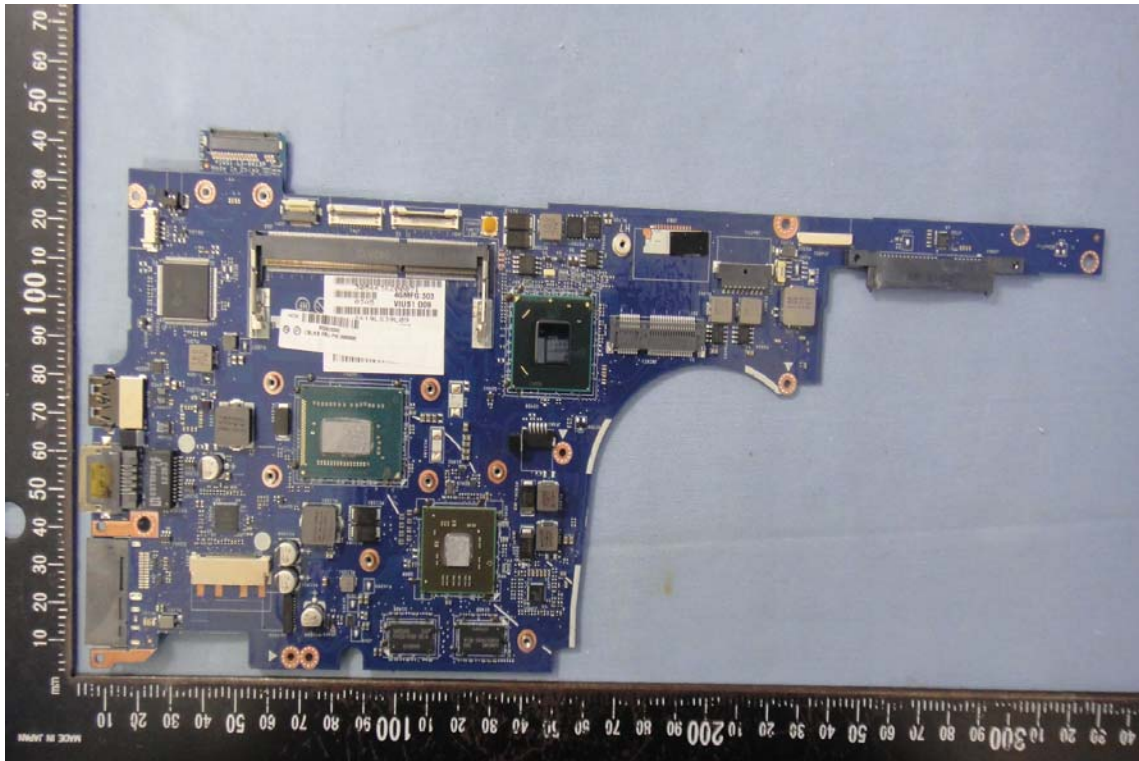
INTERNAL PHOTOGRAPHS OF EUT







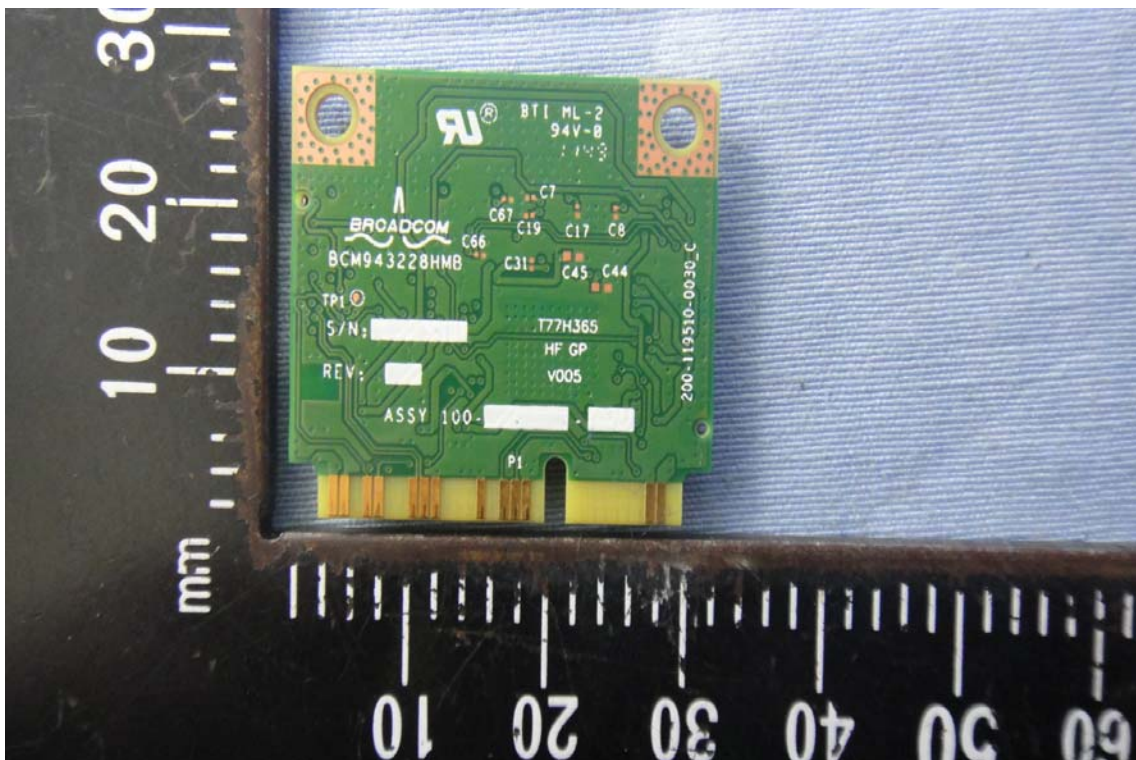


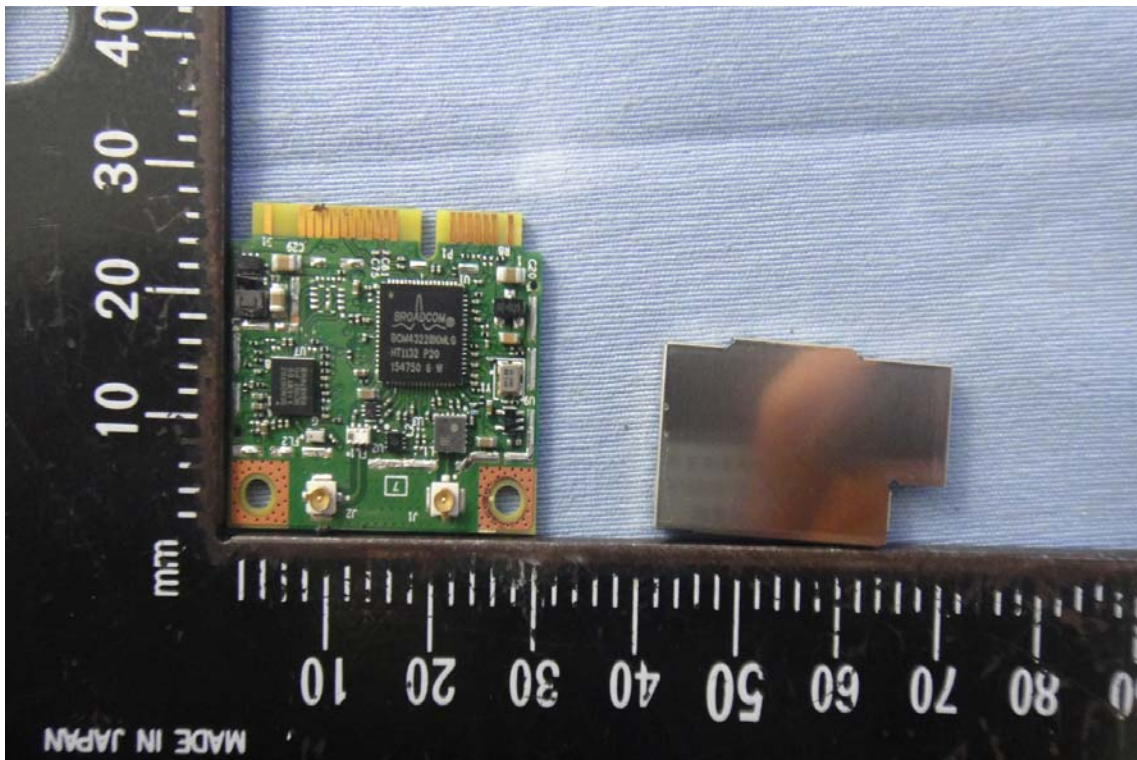




Module

Model: BCM943228HMB

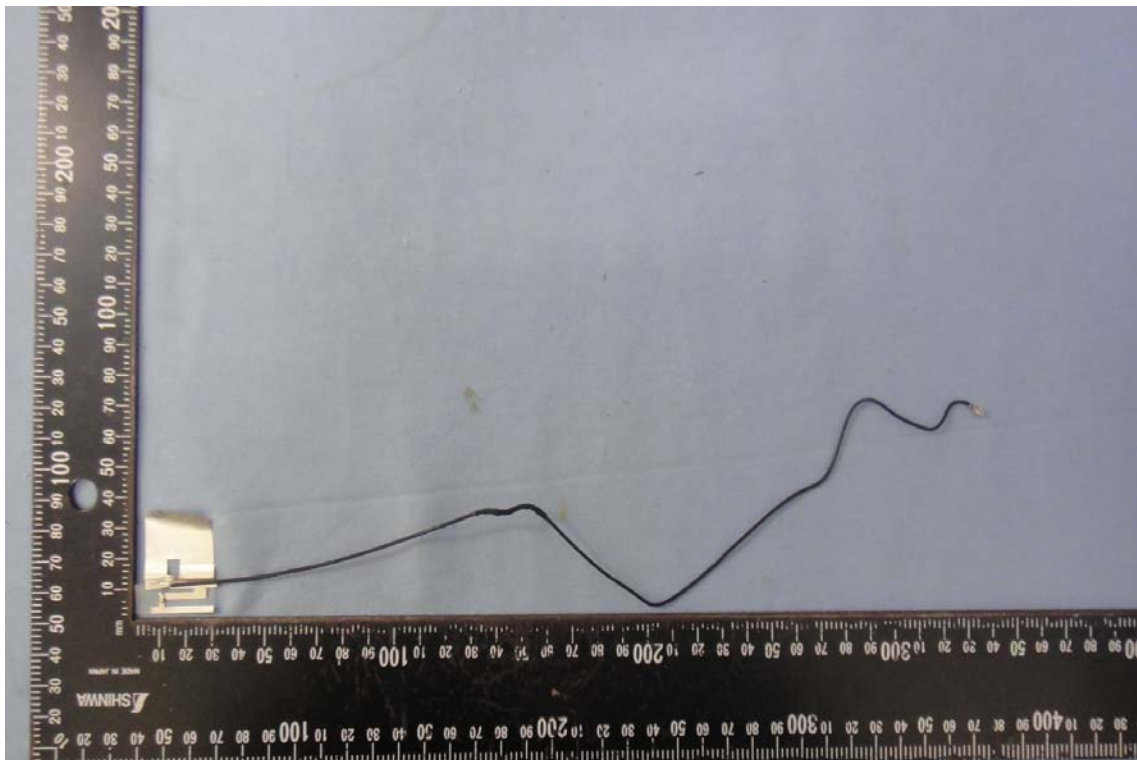
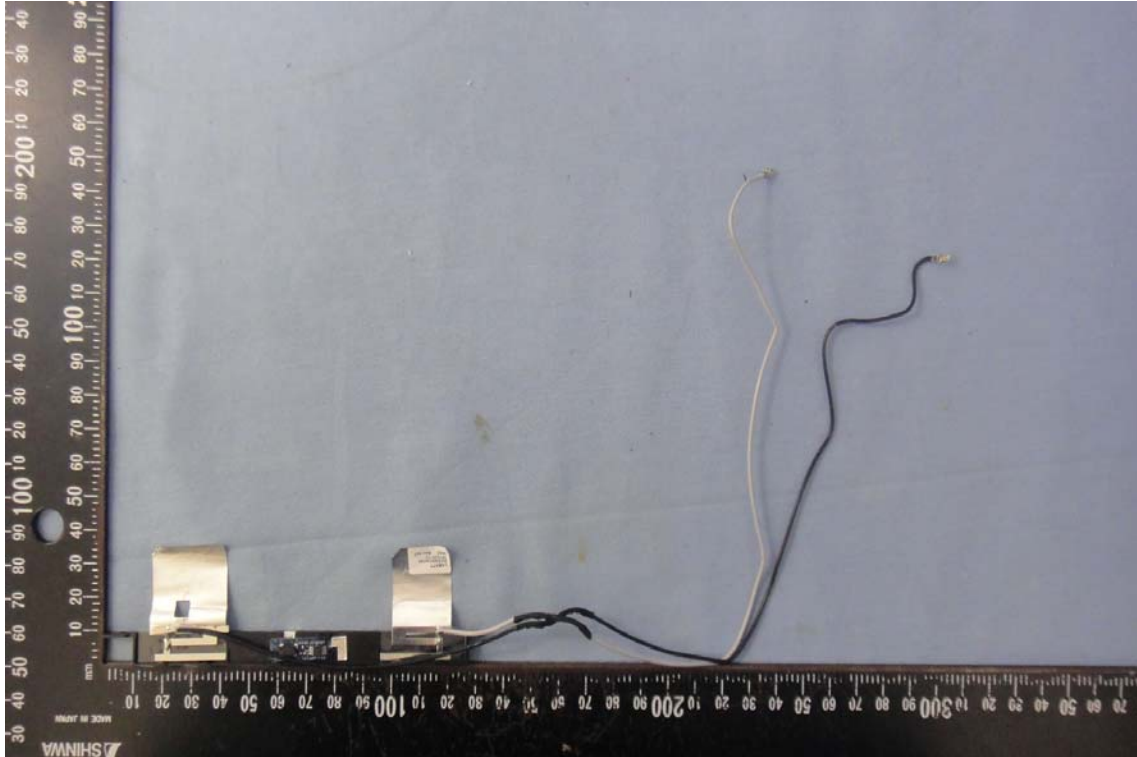


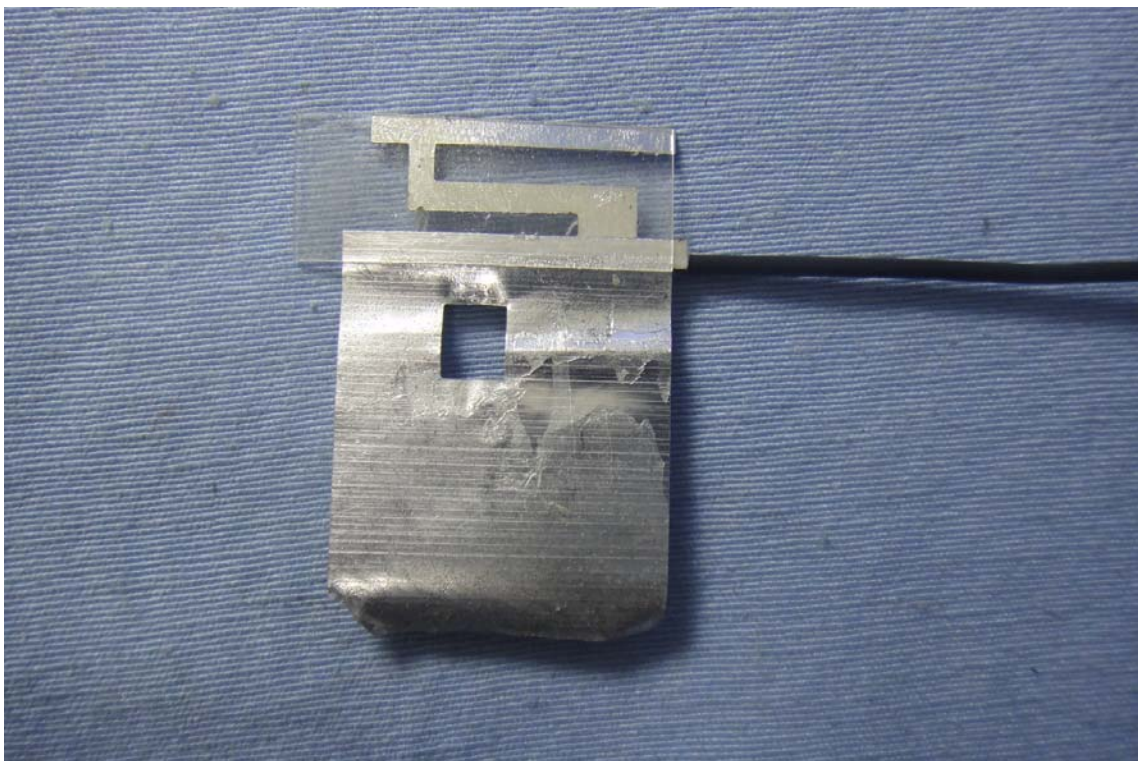


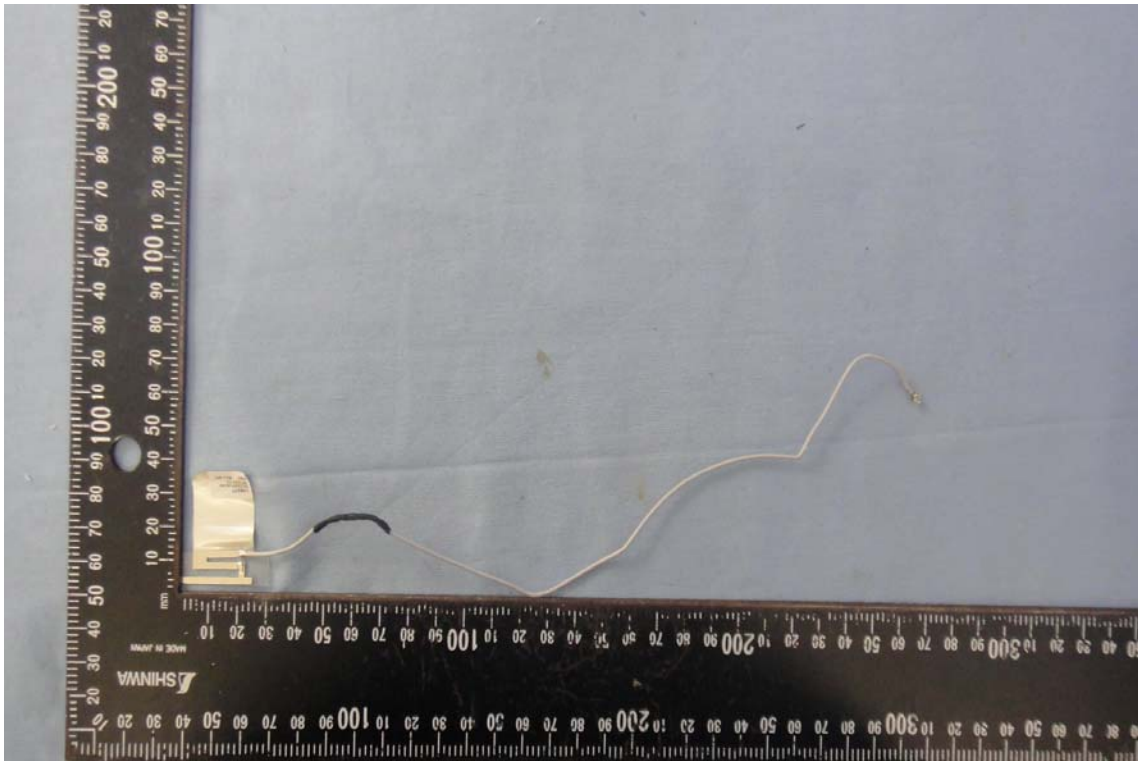


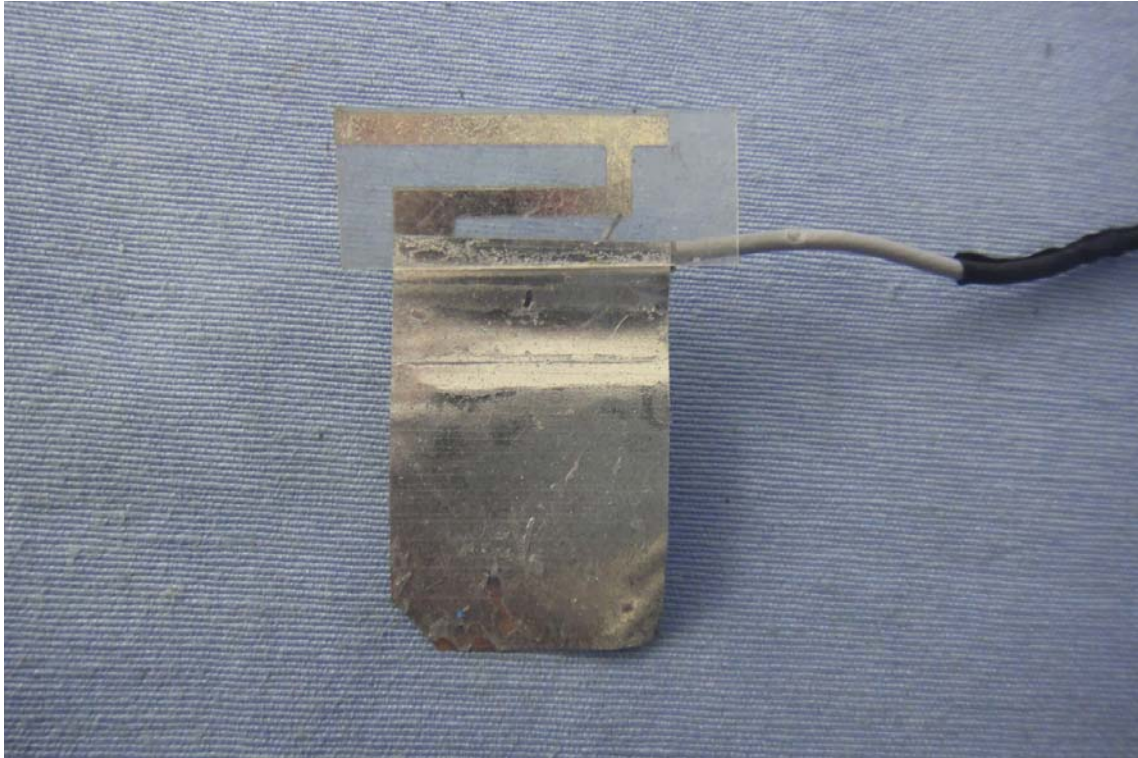
Antenna

For high-tek



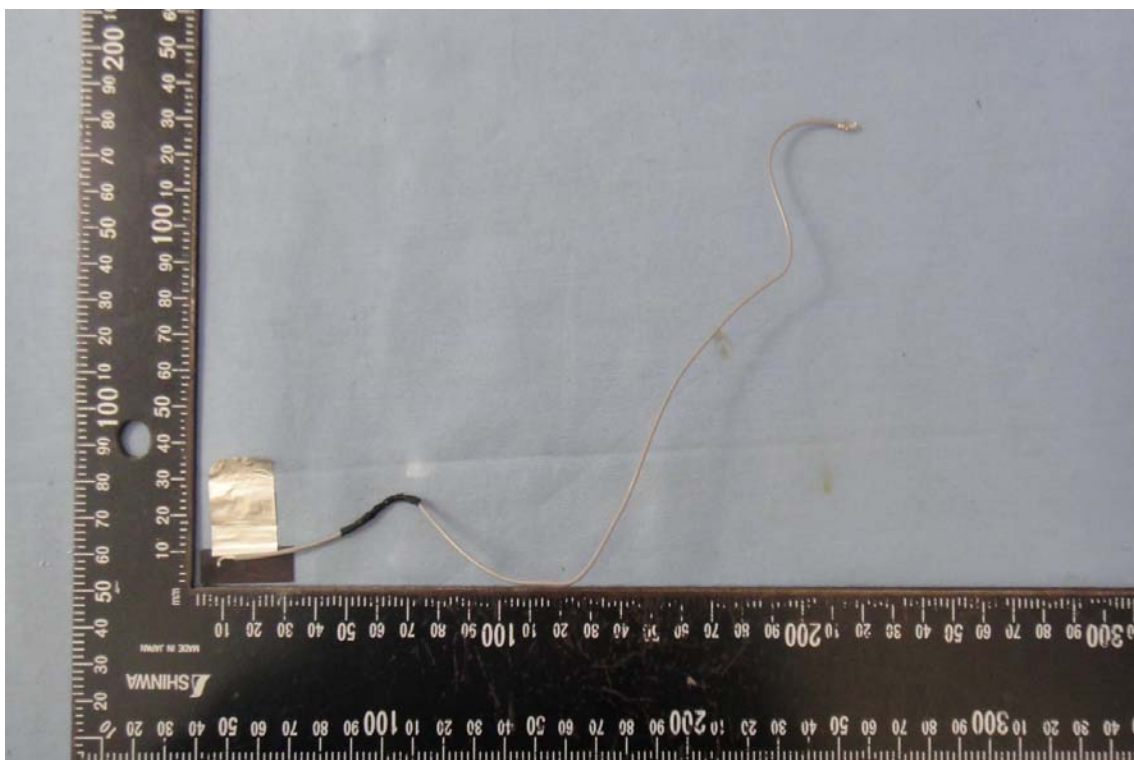
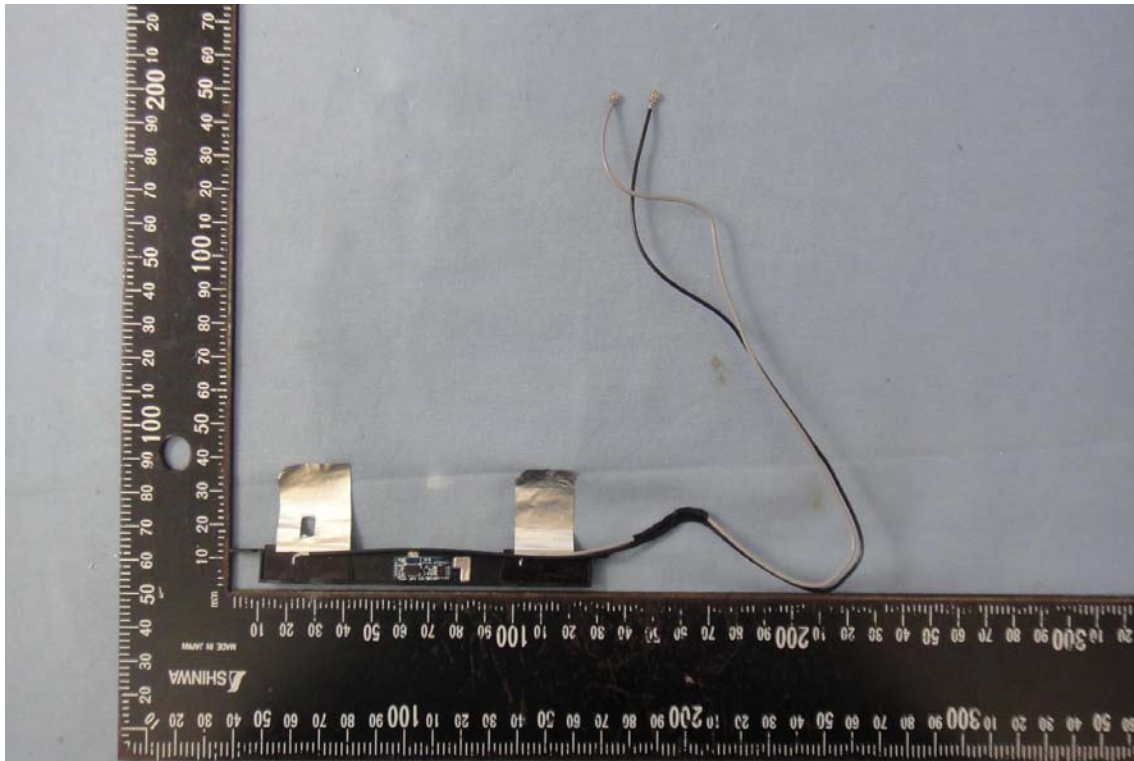


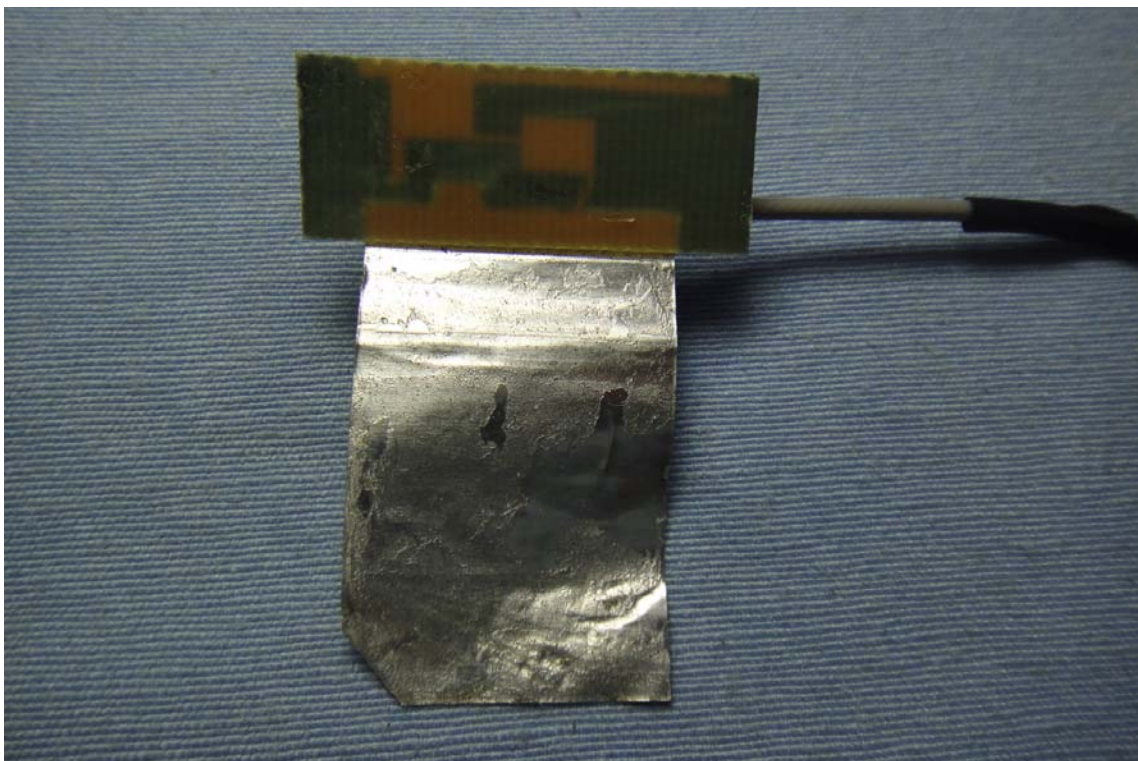
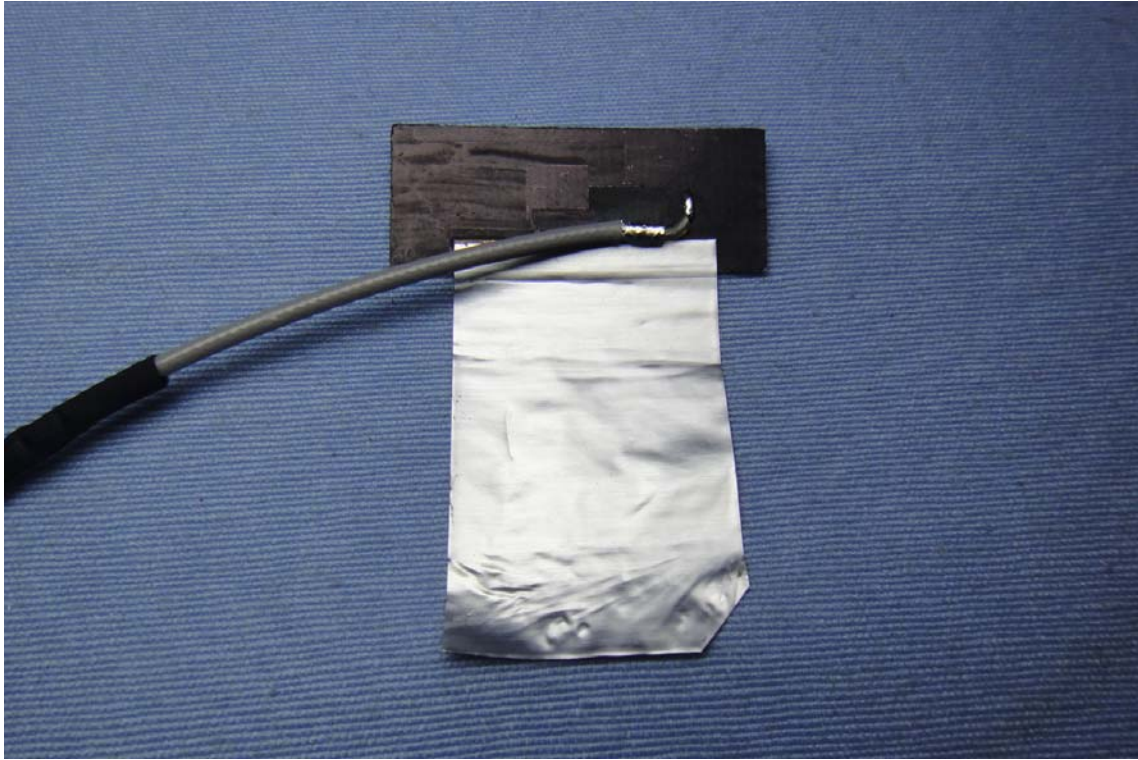


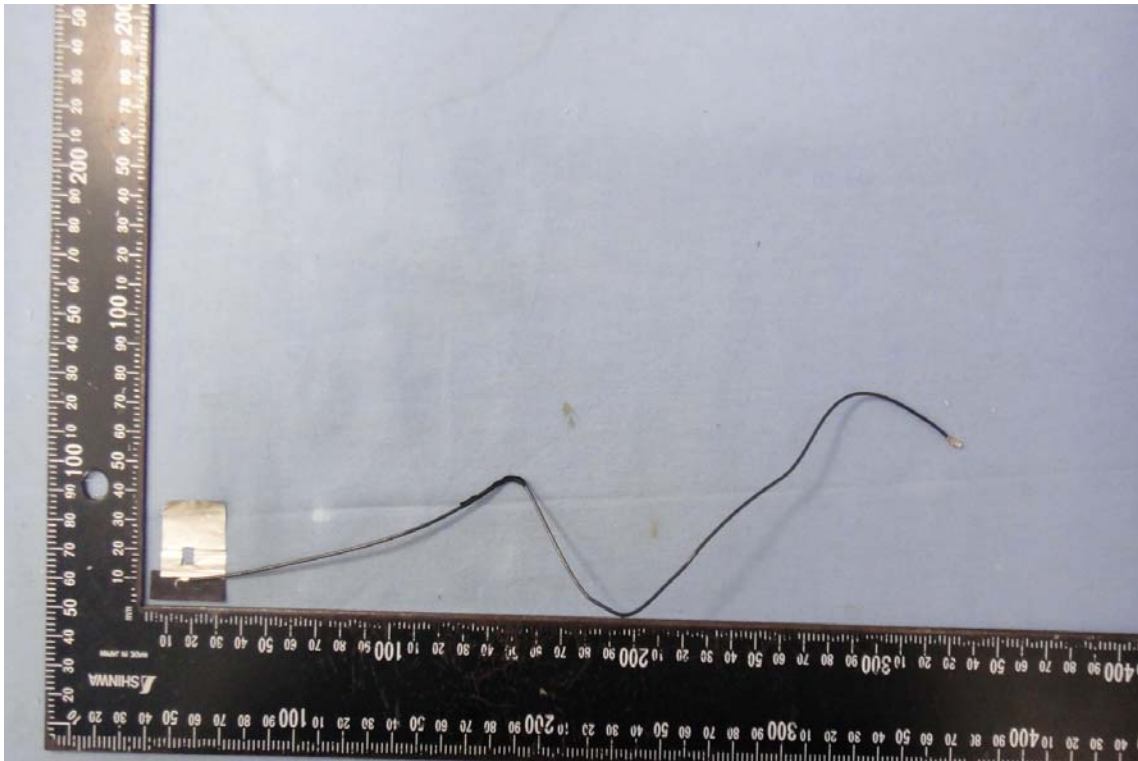




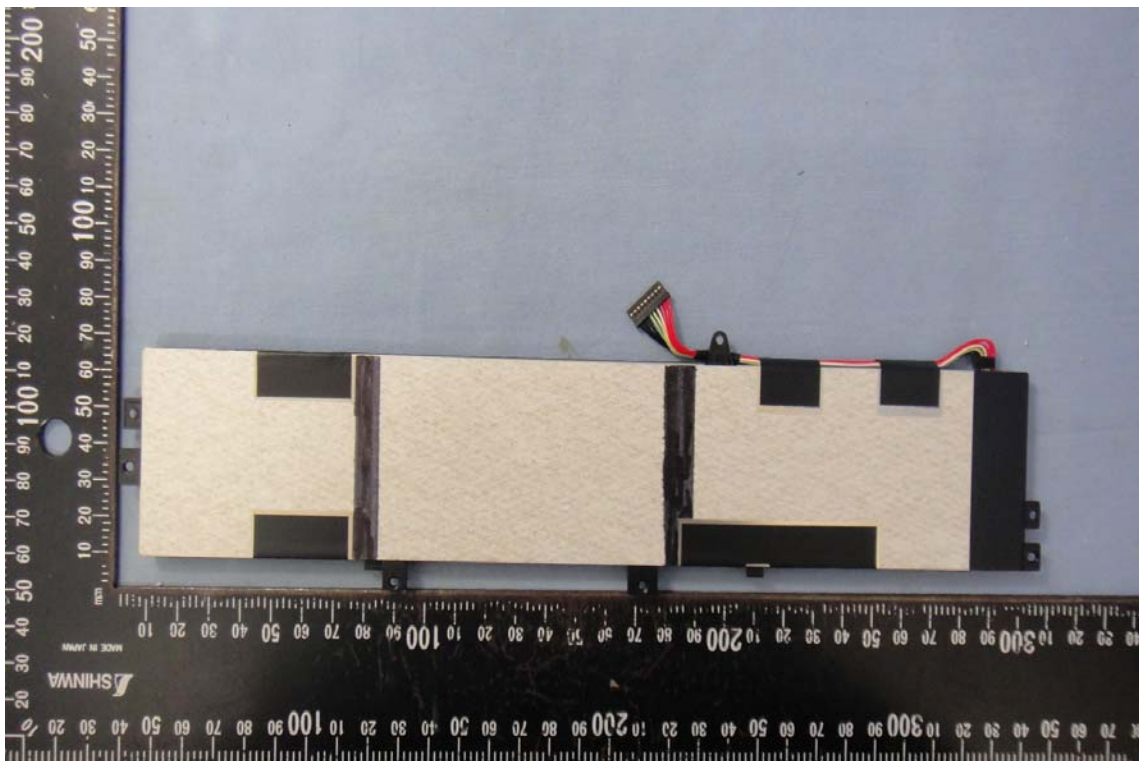
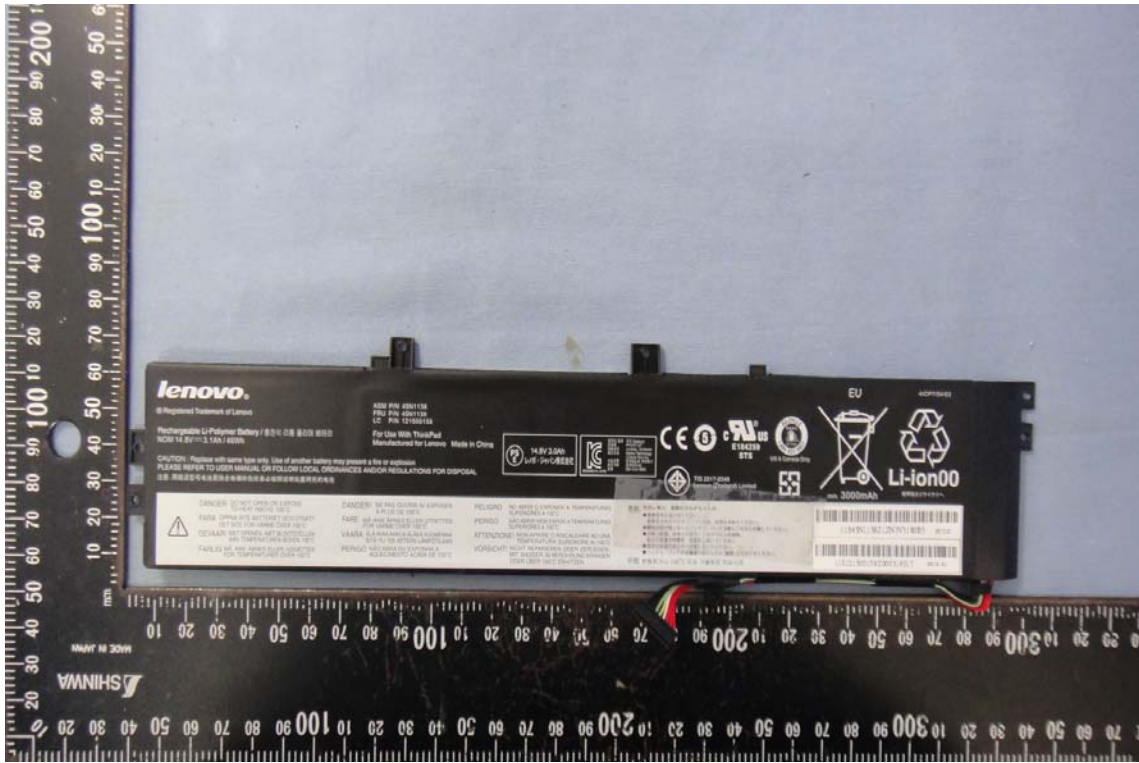
For jpc













lenovo®

® Registered Trademark of Lenovo

Rechargeable Li-Polymer Battery / 충전식 리튬 폴리머 배터리
NOM 14.8V \equiv 3.1Ah / 46Wh

ASM P/N 45N1138
FRU P/N 45N1139
LC P/N 121500158

For Use With ThinkPad
Manufactured for Lenovo Mac

CAUTION : Replace with same type only. Use of another battery may present a fire or explosion
PLEASE REFER TO USER MANUAL OR FOLLOW LOCAL ORDINANCES AND/OR REGULATIONS FOR DISPOSAL
注意: 用错误型号电池更换会有爆炸危险务必按照说明处置用完的电池



DANGER DO NOT OPEN OR EXPOSE
TO HEAT ABOVE 100°C

FARA ÖPPNA INTE BATTERIET OCH UTSÄTT
DET INTE FÖR VÄRME ÖVER 100°C

GEVAAR! NIET OPENEN, NIET BLOOTSTELLEN
AAN TEMPERATUREN BOVEN 100°C

FARLIG MÅ IKKE ÅBNES ELLER UDSÆTTES
FOR TEMPERATURER OVER 100°C

DANGER! NE PAS OUVRIER NI EXPOSER
À PLUS DE 100°C

FARE MÅ IKKE ÅPNES ELLER UTSETTES
FOR VÄRME ÖVER 100°C

VAARA ÄLÄ AVAA AKKUA ÄLÄKÄ KUUMENNA
SITÄ YLI 100 ASTEEN LÄMPÖTILAAN

PERIGO NÃO ABRA OU EXPONHA A
AQUECIMENTO ACIMA DE 100°C