



**FCC OET BULLETIN 65 SUPPLEMENT C 01-01
IEEE Std 1528-2003 & IEEE Std 1528a-2005**

SAR EVALUATION REPORT

For

**802.11a/g/n 3x3 MIMO WLAN + Bluetooth Combo PCI-E Minicard
(Tested inside of 13-inch MacBook Pro. model A1278)**

**Model: BCM94331PCIEBT4
FCC ID: QDS-BRCM1055**

**Report Number: 12U14245-1C
Issue Date: 1/16/2013**

Prepared for

**BROADCOM CORPORATION
190 MATHILDA PLACE
SUNNYVALE, CA 94086, USA**

Prepared by

**UL CCS
47173 BENICIA STREET
FREMONT, CA 94538, U.S.A.
TEL: (510) 771-1000
FAX: (510) 661-0888**



NVLAP LAB CODE 200065-0

Revision History

Rev.	Issue Date	Revisions	Revised By
--	04/09/2012	Initial Issue	--
A	05/22/2012	Added explanation under Note in Section 8, RF Power Measurement. Added internal photo WiFi module location	Sunny Shih
B	10/26/2102	Made the following revisions: 1. Added IEEE Std 1528a-2005 to the list of test methodologies applied 2. Added Sec. 7.1 Possible Combinations of 802.11 Modes vs. Tx Diversity Configurations 3. Sec. 10: Updated tables, arranged frequency bands into subsections 4. Sec. 11: Updated table, arranged frequency bands into subsections 5. Sec. 14.1: Added section 14.1 Scaled SAR Values to the Maximum Target Output Power	Sunny Shih
B1	11/20/2012	Deleted Notes below power table in Section 11	Sunny Shih
C	1/16/2013	Sec. 11: Added statement: "Spot check has been conducted for all configurations that are excluded from SAR."	Sunny Shih

Table of Contents

1. Attestation of Test Results..... 5

2. Test Methodology 6

3. Facilities and Accreditation 6

4. Calibration and Uncertainty 7

 4.1. *Measuring Instrument Calibration 7*

 4.2. *Measurement Uncertainty..... 8*

5. Measurement System Description and Setup..... 9

6. SAR Measurement Procedures..... 10

 6.1. *Normal SAR Measurement Procedure..... 10*

7. Device Under Test..... 11

 7.1. *Possible Combinations of 802.11 Modes vs. Tx Diversity Configurations..... 12*

8. Tissue Dielectric Properties..... 14

 8.1. *Composition of Ingredients for the Tissue Material Used in the SAR Tests..... 15*

 8.2. *Tissue Dielectric Parameter Check Results 16*

9. System Performance Check..... 18

 9.1. *System Performance Check Measurement Conditions 18*

 9.2. *Reference SAR Values for System Performance Check 18*

 9.3. *System Performance Check Results..... 19*

10. Summary of Required Test Modes..... 20

 10.1. *Summary of Required Test Mode for 2.4 GHz Band..... 20*

 10.2. *Summary of Required Test Mode for 5.2 GHz Band..... 22*

 10.3. *Summary of Required Test Mode for 5.3 GHz Band..... 23*

 10.4. *Summary of Required Test Mode for 5.5 GHz Band..... 24*

 10.5. *Summary of Required Test Mode for 5.8 GHz Band..... 26*

11. RF Output Power Measurement 27

 11.1. *RF Output Power Measurement for 2.4 GHz Band..... 27*

 11.2. *RF Output Power Measurement for 5.2 GHz Band..... 28*

 11.3. *RF Output Power Measurement for 5.3 GHz Band..... 29*

 11.4. *RF Output Power Measurement for 5.5 GHz Band..... 30*

 11.5. *RF Output Power Measurement for 5.8 GHz Band..... 31*

12. Required Test Channels per KDB 248227 D01 32

13. SAR Test Results 33
 13.1. 2.4GHz Band..... 33
 13.2. 5 GHz Bands..... 34

14. Summary of Highest SAR Values..... 36
 14.1. Scaled SAR Values to the Maximum Target Output Power 37
 14.2. Worst-Case SAR Plots (from Summary of Highest SAR Values table) 38
 14.2.1. Worst-Case SAR Plots for 2.4 GHz Band..... 39
 14.2.2. Worst-Case SAR Plots for 5.2 GHz Band..... 43
 14.2.3. Worst-Case SAR Plots for 5.3 GHz Band..... 48
 14.2.4. Worst-Case SAR Plots for 5.5 GHz Band..... 52
 14.2.5. Worst-Case SAR Plots for 5.8 GHz Band..... 56

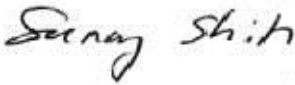
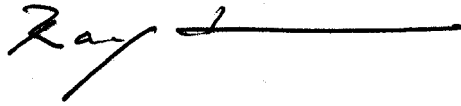
15. Appendixes..... 60
 15.1. System Performance Check Plots 60
 15.2. SAR Test Plots for WiFi 2.4 GHz Band..... 60
 15.3. SAR Test Plots for WiFi 5 GHz Bands..... 60
 15.4. Calibration Certificate for E-Field Probe EX3DV4 - SN 3773..... 60
 15.5. Calibration Certificate for E-Field Probe EX3DV4 - SN 3749..... 60
 15.6. Calibration Certificate for E-Field Probe EX3DV4 - SN 3751 60
 15.7. Calibration Certificate for D2450V2 - SN: 706 w/ Extended Cal. Data 60
 15.8. Calibration Certificate for D5GHzV2 - SN 1003 60

16. Antenna Locations & Separation Distances..... 61

17. Setup Photo 64

18. Host Device Photos..... 65

1. Attestation of Test Results

Applicant	BROADCOM CORPORATION		
EUT description	802.11a/g/n 3x3 MIMO WLAN + Bluetooth Combo PCI-E Minicard (Tested inside of 13-inch MacBook Pro. model A1278)		
Model numbers	BCM94331PCIEBT4		
Test device is	An identical prototype		
Device category	Portable device		
Exposure category	General Population/Uncontrolled Exposure		
Date tested	January 27 – February 15, 2012		
FCC Rule Parts	Freq. Range	Highest 1-g SAR (W/kg)	Limit
15.247	2412-2462 MHz	Body: 1.18 W/kg (Lap held w/ 0 mm distance)	1.6 W/kg
15.407	5150-5250 MHz	Body: 0.808 W/kg (Lap held w/ 0 mm distance)	
	5250-5350 MHz	Body: 0.917 W/kg (Lap held w/ 0 mm distance)	
	5500-5700 MHz	Body: 1.05 W/kg (Lap held w/ 0 mm distance)	
15.247	5725-5850 MHz	Body: 0.890 W/kg (Lap held w/ 0 mm distance)	
Applicable Standards			Test Results
FCC OET Bulletin 65 Supplement C 01-01 IEEE STD 1528:2003 & IEEE Std 1528a-2005			Pass
<p>UL CCS tested the above equipment in accordance with the requirements set forth in the above standards. All indications of Pass/Fail in this report are opinions expressed by UL CCS based on interpretations and/or observations of test results. Measurement Uncertainties were not taken into account and are published for informational purposes only. The test results show that the equipment tested is capable of demonstrating compliance with the requirements as documented in this report.</p> <p>Note: The results documented in this report apply only to the tested sample, under the conditions and modes of operation as described herein. This document may not be altered or revised in any way unless done so by UL CCS and all revisions are duly noted in the revisions section. Any alteration of this document not carried out by UL CCS will constitute fraud and shall nullify the document. This report must not be used by the client to claim product certification, approval, or endorsement by NVLAP, NIST, any agency of the Federal Government, or any agency of any government (NIST Handbook 150, Annex A). This report is written to support regulatory compliance of the applicable standards stated above.</p>			
Approved & Released For UL CCS By:		Tested By:	
			
Sunny Shih Engineering Team Leader UL CCS		Ray Su SAR Engineer UL CCS	

2. Test Methodology

The tests documented in this report were performed in accordance with FCC OET Bulletin 65 Supplement C Edition 01-01, IEEE STD 1528-2003 & IEEE Std 1528a-2005, and the following published KDB procedures.

- KDB 248227 D01 SAR meas for 802 11 a b g v01r02
- KDB 865664 SAR 3 to 6 GHz Rev
- KDB 616217 D03 SAR Supp Note and Netbook Laptop V01
- KDB 447498 D01 Mobile Portable RF Exposure v04

3. Facilities and Accreditation

The test sites and measurement facilities used to collect data are located at 47173 Benicia Street, Fremont, California, USA.

UL CCS is accredited by NVLAP, Laboratory Code 200065-0. The full scope of accreditation can be viewed at <http://www.ccsemc.com>.

4. Calibration and Uncertainty

4.1. Measuring Instrument Calibration

The measuring equipment utilized to perform the tests documented in this report has been calibrated in accordance with the manufacturer's recommendations, and is traceable to recognized national standards.

Name of Equipment	Manufacturer	Type/Model	Serial No.	Cal. Due date		
				MM	DD	Year
Dielectronic Probe kit	HP	85070C	N/A	N/A		
ESA Series Network Analyzer	Agilent	E5071B	MY42100131	2	11	2013
Synthesized Signal Generator	HP	83732B	US34490599	7	14	2012
E-Field Probe	SPEAG	EX3DV4	3773	5	3	2012
E-Field Probe	SPEAG	EX3DV4	3751	12	19	2012
E-Field Probe	SPEAG	EX3DV4	3749	1	27	2013
Thermometer	ERTCO	639-1S	1718	7	19	2012
Data Acquisition Electronics	SPEAG	DAE4	1259	5	3	2012
Data Acquisition Electronics	SPEAG	DAE3	427	1	17	2013
System Validation Dipole	SPEAG	*D2450V2	706	4	19	2012
System Validation Dipole	SPEAG	D5GHzV2	1003	8	23	2012
Power Meter	HP	437B	3125U16345	5	13	2012
Power Sensor	HP	8481A	2702A60780	5	13	2012
Amplifier	MITEQ	4D00400600-50-30P	1620606	N/A		
Directional coupler	Werlatone	C8060-102	2141	N/A		

Notes:

*Per KDB 450824 D02 requirements for dipole calibration, UL CCS has adopted two years calibration intervals. On annual basis, each measurement dipole has been evaluated and is in compliance with the following criteria:

1. There is no physical damage on the dipole
2. System validation with specific dipole is within 10% of calibrated value.
3. Return-loss is within 20% of calibrated measurement. (See Appendixes Calibration Certificate for D2450V2 SN 706 incl. extended cal. data)
4. Impedance is within 5Ω of calibrated measurement (See Appendixes Calibration Certificate for D2450V2 SN 706 incl. extended cal. data)

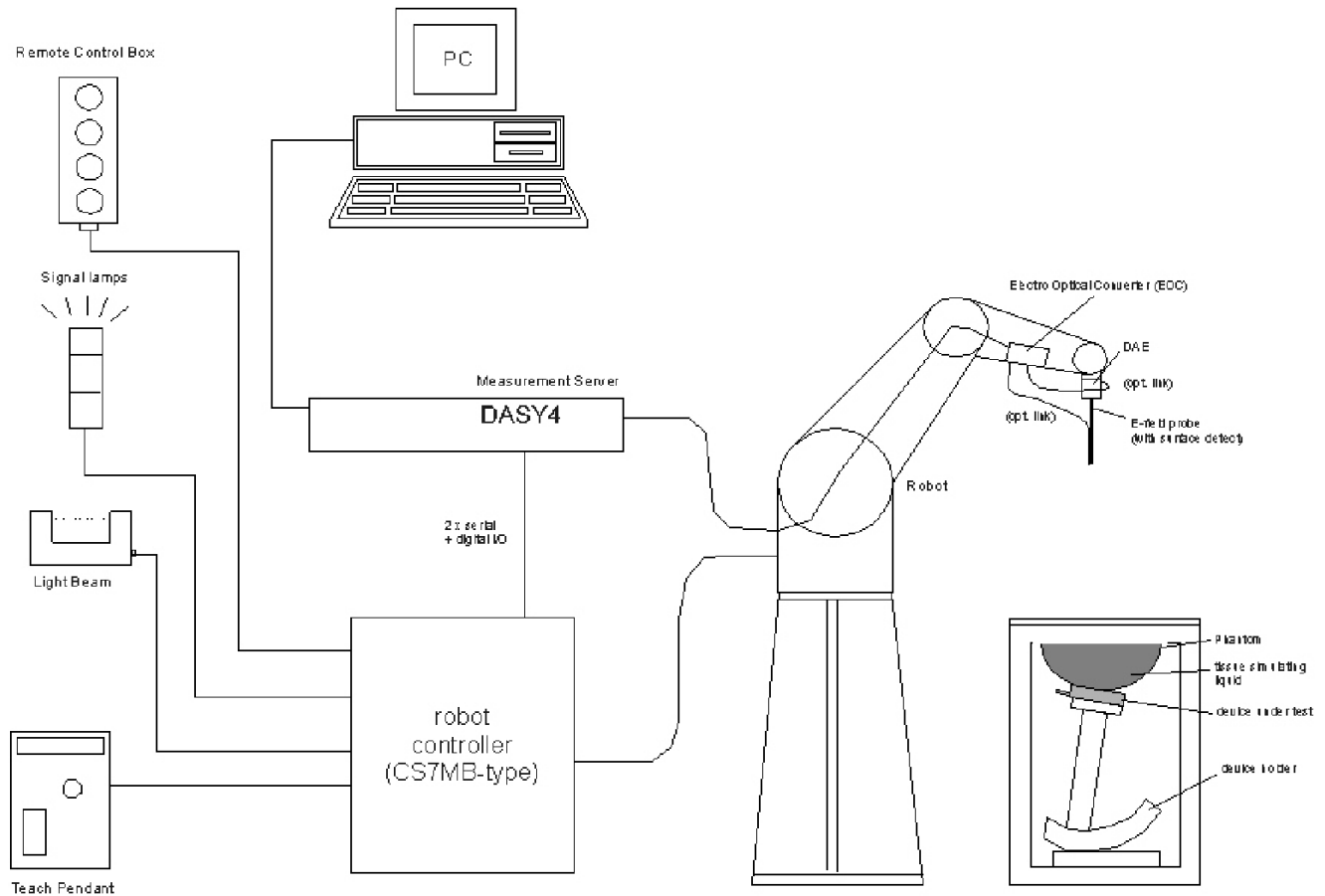
4.2. Measurement Uncertainty

Measurement uncertainty for 300 MHz to 3 GHz averaged over 1 gram					
Component	Error, %	Distribution	Divisor	Sensitivity	U (Xi), %
Measurement System					
Probe Calibration (k=1)	6.00	Normal	1	1	6.00
Axial Isotropy	1.15	Rectangular	1.732	0.7071	0.47
Hemispherical Isotropy	2.30	Rectangular	1.732	0.7071	0.94
Boundary Effect	0.90	Rectangular	1.732	1	0.52
Probe Linearity	3.45	Rectangular	1.732	1	1.99
System Detection Limits	1.00	Rectangular	1.732	1	0.58
Readout Electronics	0.30	Normal	1	1	0.30
Response Time	0.80	Rectangular	1.732	1	0.46
Integration Time	2.60	Rectangular	1.732	1	1.50
RF Ambient Conditions - Noise	3.00	Rectangular	1.732	1	1.73
RF Ambient Conditions - Reflections	3.00	Rectangular	1.732	1	1.73
Probe Positioner Mechanical Tolerance	0.40	Rectangular	1.732	1	0.23
Probe Positioning with respect to Phantom	2.90	Rectangular	1.732	1	1.67
Extrapolation, Interpolation and Integration	1.00	Rectangular	1.732	1	0.58
Test Sample Related					
Test Sample Positioning	2.90	Normal	1	1	2.90
Device Holder Uncertainty	3.60	Normal	1	1	3.60
Output Power Variation - SAR Drift	5.00	Rectangular	1.732	1	2.89
Phantom and Tissue Parameters					
Phantom Uncertainty (shape and thickness)	4.00	Rectangular	1.732	1	2.31
Liquid Conductivity - deviation from target	5.00	Rectangular	1.732	0.64	1.85
Liquid Conductivity - measurement	2.85	Normal	1	0.64	1.82
Liquid Permittivity - deviation from target	5.00	Rectangular	1.732	0.6	1.73
Liquid Permittivity - measurement uncertainty	0.41	Normal	1	0.6	0.25
Combined Standard Uncertainty Uc(y) =					9.91
Expanded Uncertainty U, Coverage Factor = 2, > 95 % Confidence =				19.82 %	
Expanded Uncertainty U, Coverage Factor = 2, > 95 % Confidence =				1.57 dB	

Measurement uncertainty for 3 to 6 GHz averaged over 1 gram					
Component	Error, %	Distribution	Divisor	Sensitivity	U (Xi), %
Measurement System					
Probe Calibration (k=1)	6.55	Normal	1	1	6.55
Axial Isotropy	1.15	Rectangular	1.732	0.7071	0.47
Hemispherical Isotropy	2.30	Rectangular	1.732	0.7071	0.94
Boundary Effect	0.90	Rectangular	1.732	1	0.52
Probe Linearity	3.45	Rectangular	1.732	1	1.99
System Detection Limits	1.00	Rectangular	1.732	1	0.58
Readout Electronics	1.00	Normal	1	1	1.00
Response Time	0.80	Rectangular	1.732	1	0.46
Integration Time	2.60	Rectangular	1.732	1	1.50
RF Ambient Conditions - Noise	3.00	Rectangular	1.732	1	1.73
RF Ambient Conditions - Reflections	3.00	Rectangular	1.732	1	1.73
Probe Positioner Mechanical Tolerance	0.40	Rectangular	1.732	1	0.23
Probe Positioning with respect to Phantom	2.90	Rectangular	1.732	1	1.67
Extrapolation, Interpolation and Integration	3.90	Rectangular	1.732	1	2.25
Test Sample Related					
Test Sample Positioning	1.10	Normal	1	1	1.10
Device Holder Uncertainty	3.60	Normal	1	1	3.60
Output Power Variation - SAR Drift	5.00	Rectangular	1.732	1	2.89
Phantom and Tissue Parameters					
Phantom Uncertainty (shape and thickness)	4.00	Rectangular	1.732	1	2.31
Liquid Conductivity - deviation from target	5.00	Rectangular	1.732	0.64	1.85
Liquid Conductivity - measurement	4.77	Normal	1	0.64	3.05
Liquid Permittivity - deviation from target	10.00	Rectangular	1.732	0.6	3.46
Liquid Permittivity - measurement uncertainty	4.90	Normal	1	0.6	2.94
Combined Standard Uncertainty Uc(y), %:					11.28
Expanded Uncertainty U, Coverage Factor = 1.96, > 95 % Confidence =				22.10 %	
Expanded Uncertainty U, Coverage Factor = 1.96, > 95 % Confidence =				1.73 dB	

5. Measurement System Description and Setup

The DASY4 system used for performing compliance tests consists of the following items:



- A standard high precision 6-axis robot (Stäubli RX family) with controller, teach pendant and software. An arm extension for accommodating the data acquisition electronics (DAE).
- A dosimetric probe, i.e., an isotropic E-field probe optimized and calibrated for usage in tissue simulating liquid.
- A data acquisition electronics (DAE) which performs the signal amplification, signal multiplexing, AD-conversion, offset measurements, mechanical surface detection, collision detection, etc. The unit is battery powered with standard or rechargeable batteries. The signal is optically transmitted to the EOC.
- The function of the measurement server is to perform the time critical tasks such as signal filtering, control of the robot operation and fast movement interrupts.
- A probe alignment unit which improves the (absolute) accuracy of the probe positioning.
- A computer operating Windows XP.
- DASY software.
- Remote controls with teach pendant and additional circuitry for robot safety such as warning lamps, etc.
- The SAM twin phantom enabling testing left-hand and right-hand usage.
- The device holder for handheld mobile phones.
- Tissue simulating liquid mixed according to the given recipes.
- Validation dipole kits allowing validating the proper functioning of the system.

6. SAR Measurement Procedures

6.1. Normal SAR Measurement Procedure

Step 1: Power Reference Measurement

The Power Reference Measurement and Power Drift Measurements are for monitoring the power drift of the device under test in the batch process. The Minimum distance of probe sensors to surface determines the closest measurement point to phantom surface. The minimum distance of probe sensors to surface is 2.1 mm. This distance cannot be smaller than the Distance of sensor calibration points to probe tip as defined in the probe properties.

Step 2: Area Scan

The Area Scan is used as a fast scan in two dimensions to find the area of high field values, before doing a fine measurement around the hot spot. The sophisticated interpolation routines implemented in DASYS software can find the maximum locations even in relatively coarse grids. When an Area Scan has measured all reachable points, it computes the field maximal found in the scanned area, within a range of the global maximum. The range (in dB) is specified in the standards for compliance testing. For example, a 2 dB range is required in IEEE Standard 1528 and IEC 62209 standards, whereby 3 dB is a requirement when compliance is assessed in accordance with the ARIB standard (Japan). If only one Zoom Scan follows the Area Scan, then only the absolute maximum will be taken as reference. For cases where multiple maximums are detected, the number of Zoom Scans has to be increased accordingly.

Step 3: Zoom Scan

Zoom Scans are used to assess the peak spatial SAR values within a cubic averaging volume containing 1 g and 10 g of simulated tissue. The Zoom Scan measures $\geq 7 \times 7 \times 9$ (above 4.5 GHz) or $5 \times 5 \times 7$ (below 3 GHz) points within a cube whose base faces are centered on the maxima found in a preceding area scan job within the same procedure. When the measurement is done, the Zoom Scan evaluates the averaged SAR for 1 g and 10 g and displays these values next to the job's label.

Step 4: Power drift measurement

The Power Drift Measurement measures the field at the same location as the most recent power reference measurement within the same procedure, and with the same settings. The Power Drift Measurement gives the field difference in dB from the reading conducted within the last Power Reference Measurement. This allows a user to monitor the power drift of the device under test within a batch process. The measurement procedure is the same as Step 1.

Step 5: Z-Scan

The Z Scan measures points along a vertical straight line. The line runs along the Z-axis of a one-dimensional grid. In order to get a reasonable extrapolation, the extrapolated distance should not be larger than the step size in Z-direction.

7. Device Under Test

802.11a/g/n 3x3 MIMO WLAN + Bluetooth Combo PCI-E Minicard, The radio module is manufactured by Broadcom. (Tested inside of 13-inch MacBook Pro. model A1278) Model: BCM94331PCIEBT4											
Normal operation	Laptop mode (notebook).										
Antennas tested	<table border="0"> <thead> <tr> <th><u>Manufacturer</u></th> <th><u>Part Number</u></th> </tr> </thead> <tbody> <tr> <td>Amphenol/Molex</td> <td>WiFi 3: 604-1865 (for chain 0)</td> </tr> <tr> <td></td> <td>WiFi 2: 604-1865 (for chain 1)</td> </tr> <tr> <td></td> <td>WiFi 1: 604-1865 (for chain 2)</td> </tr> <tr> <td></td> <td>BT: 631-1648</td> </tr> </tbody> </table> <p>The Antenna-to-module mapping: Chain 0 - WiFi Antenna 3 Chain 1 - WiFi Antenna 2 Chain 2 - WiFi Antenna 1</p>	<u>Manufacturer</u>	<u>Part Number</u>	Amphenol/Molex	WiFi 3: 604-1865 (for chain 0)		WiFi 2: 604-1865 (for chain 1)		WiFi 1: 604-1865 (for chain 2)		BT: 631-1648
<u>Manufacturer</u>	<u>Part Number</u>										
Amphenol/Molex	WiFi 3: 604-1865 (for chain 0)										
	WiFi 2: 604-1865 (for chain 1)										
	WiFi 1: 604-1865 (for chain 2)										
	BT: 631-1648										
Simultaneous transmission	WiFi 5 GHz bands can transmit simultaneously with Bluetooth WiFi 2.4 GHz band can transmit simultaneously with Bluetooth										
Assessment for SAR evaluation for Simultaneous transmission	<p>WiFi vs Bluetooth</p> <p>As Bluetooth's max average power is 0.87 mW [$<60/f(\text{GHz})$ mW], standalone SAR is not required. Therefore, WiFi and Bluetooth simultaneous transmission SAR evaluation is not required.</p>										

7.1. Possible Combinations of 802.11 Modes vs. Tx Diversity Configurations

Band (GHz)	802.11 modes	Tx diversity configurations	Original	C2PC
2.4	11b	1 Tx	√	√
		2 Tx	√	√
		3 Tx	√	√
	11g	1 Tx	√	√
		2 Tx	√	√
		3 Tx	√	√
	11n	HT20 (1 Tx)	√	√
		HT40 (1 Tx)	disabled	disabled
		HT20 (2 Tx)	√	√
		HT40 (2 Tx)	disabled	disabled
HT20 (3 Tx)		√	√	
HT40 (3Tx)		disabled	disabled	

Note: 1Tx, 2Tx and 3Tx power levels detailed apply to all CDD/STBC/SDM modes as applicable.

Band (GHz)	802.11 modes	Tx diversity configurations	Original	C2PC
5.2	11a	Legacy (1 Tx)	√	√
		CDD (2 Tx)	disabled	disabled
		CDD (3 Tx)	disabled	disabled
	11n	HT20 SISO (1 Tx)	√	√
		HT40 SISO (1 Tx)	√	√
		HT20 CDD (2 Tx)	disabled	disabled
		HT20 STBC (2 Tx)	√	√
		HT20 SDM (2 Tx)	√	√
		HT40 CDD (2 Tx)	√	√
		HT40 STBC (2 Tx)	√	√
		HT40 SDM (2 Tx)	√	√
		HT20 CDD (3 Tx)	disabled	disabled
		HT20 STBC (3 Tx)	√	√
		HT20 SDM (3 Tx)	√	√
		HT40 CDD (3 Tx)	disabled	disabled
		HT40 STBC (3 Tx)	√	√
HT40 SDM (3 Tx)	√	√		

Band (GHz)	802.11 modes	Tx diversity configurations	Original	C2PC
5.3	11a	Legacy (1 Tx)	√	√
		CDD (2 Tx)	√	√
		CDD (3 Tx)	√	√
	11n	HT20 SISO (1 Tx)	√	√
		HT40 SISO (1 Tx)	√	√
		HT20 CDD (2 Tx)	√	√
		HT20 STBC (2 Tx)	√	√
		HT20 SDM (2 Tx)	√	√
		HT40 CDD (2 Tx)	√	√
		HT40 STBC (2 Tx)	√	√
		HT40 SDM (2 Tx)	√	√
		HT20 CDD (3 Tx)	√	√
		HT20 STBC (3 Tx)	√	√
		HT20 SDM (3 Tx)	√	√
		HT40 CDD (3 Tx)	√	√
		HT40 STBC (3 Tx)	√	√
HT40 SDM (3 Tx)	√	√		

Possible Combinations of 802.11 Modes vs. Tx Diversity Configurations Continued

Band (GHz)	802.11 modes	Tx diversity configurations	Original	C2PC
5.5	11a	Legacy (1 Tx)	√	√
		CDD (2 Tx)	√	√
		CDD (3 Tx)	√	√
	11n	HT20 SISO (1 Tx)	√	√
		HT40 SISO (1 Tx)	√	√
		HT20 CDD (2 Tx)	√	√
		HT20 STBC (2 Tx)	√	√
		HT20 SDM (2 Tx)	√	√
		HT40 CDD (2 Tx)	√	√
		HT40 STBC (2 Tx)	√	√
		HT40 SDM (2 Tx)	√	√
		HT20 CDD (3 Tx)	√	√
		HT20 STBC (3 Tx)	√	√
		HT20 SDM (3 Tx)	√	√
		HT40 CDD (3 Tx)	√	√
		HT40 STBC (3 Tx)	√	√
		HT40 SDM (3 Tx)	√	√
Band (GHz)	802.11 modes	Tx diversity configurations	Original	C2PC
5.8	11a	Legacy (1 Tx)	√	√
		CDD (2 Tx)	√	√
		CDD (3 Tx)	√	√
	11n	HT20 SISO (1 Tx)	√	√
		HT40 SISO (1 Tx)	√	√
		HT20 CDD (2 Tx)	√	√
		HT20 STBC (2 Tx)	√	√
		HT20 SDM (2 Tx)	√	√
		HT40 CDD (2 Tx)	√	√
		HT40 STBC (2 Tx)	√	√
		HT40 SDM (2 Tx)	√	√
		HT20 CDD (3 Tx)	√	√
		HT20 STBC (3 Tx)	√	√
		HT20 SDM (3 Tx)	√	√
		HT40 CDD (3 Tx)	√	√
		HT40 STBC (3 Tx)	√	√
		HT40 SDM (3 Tx)	√	√

8. Tissue Dielectric Properties

IEEE Std 1528-2003 Table 2

Target Frequency (MHz)	Head	
	ϵ_r	σ (S/m)
300	45.3	0.87
450	43.5	0.87
835	41.5	0.90
900	41.5	0.97
1450	40.5	1.20
1800 – 2000	40.0	1.40
2450	39.2	1.80
2600	39.0	1.96
3000	38.5	2.40

FCC OET Bulletin 65 Supplement C 01-01

Target Frequency (MHz)	Head		Body	
	ϵ_r	σ (S/m)	ϵ_r	σ (S/m)
150	52.3	0.76	61.9	0.80
300	45.3	0.87	58.2	0.92
450	43.5	0.87	56.7	0.94
835	41.5	0.90	55.2	0.97
900	41.5	0.97	55.0	1.05
915	41.5	0.98	55.0	1.06
1450	40.5	1.20	54.0	1.30
1610	40.3	1.29	53.8	1.40
1800 – 2000	40.0	1.40	53.3	1.52
2450	39.2	1.80	52.7	1.95
3000	38.5	2.40	52.0	2.73
5000	36.2	4.45	49.3	5.07
5100	36.1	4.55	49.1	5.18
5200	36.0	4.66	49.0	5.30
5300	35.9	4.76	48.9	5.42
5400	35.8	4.86	48.7	5.53
5500	35.6	4.96	48.6	5.65
5600	35.5	5.07	48.5	5.77
5700	35.4	5.17	48.3	5.88
5800	35.3	5.27	48.2	6.00

8.2. Tissue Dielectric Parameter Check Results

Date	Freq. (MHz)	Liquid Parameters		Measured	Target	Delta (%)	Limit ±(%)	
1/27/2012	Body 5180	e'	49.2555	Relative Permittivity (ϵ_r):	49.26	49.05	0.43	10
		e''	18.3942	Conductivity (σ):	5.30	5.27	0.50	5
	Body 5200	e'	49.2261	Relative Permittivity (ϵ_r):	49.23	49.02	0.42	10
		e''	18.4281	Conductivity (σ):	5.33	5.29	0.63	5
	Body 5500	e'	48.6585	Relative Permittivity (ϵ_r):	48.66	48.61	0.09	10
		e''	18.7652	Conductivity (σ):	5.74	5.64	1.67	5
	Body 5800	e'	48.1178	Relative Permittivity (ϵ_r):	48.12	48.20	-0.17	10
		e''	19.0796	Conductivity (σ):	6.15	6.00	2.55	5
	Body 5825	e'	48.0828	Relative Permittivity (ϵ_r):	48.08	48.20	-0.24	10
		e''	19.1029	Conductivity (σ):	6.19	6.00	3.12	5
1/28/2012	Body 5180	e'	48.6094	Relative Permittivity (ϵ_r):	48.61	49.05	-0.89	10
		e''	18.5847	Conductivity (σ):	5.35	5.27	1.55	5
	Body 5200	e'	48.5466	Relative Permittivity (ϵ_r):	48.55	49.02	-0.96	10
		e''	18.5619	Conductivity (σ):	5.37	5.29	1.36	5
	Body 5500	e'	47.9879	Relative Permittivity (ϵ_r):	47.99	48.61	-1.29	10
		e''	18.9344	Conductivity (σ):	5.79	5.64	2.59	5
	Body 5800	e'	47.3521	Relative Permittivity (ϵ_r):	47.35	48.20	-1.76	10
		e''	19.2175	Conductivity (σ):	6.20	6.00	3.29	5
	Body 5825	e'	47.2899	Relative Permittivity (ϵ_r):	47.29	48.20	-1.89	10
		e''	19.1471	Conductivity (σ):	6.20	6.00	3.36	5
2/1/2012	Body 5180	e'	48.8081	Relative Permittivity (ϵ_r):	48.81	49.05	-0.49	10
		e''	18.3789	Conductivity (σ):	5.29	5.27	0.42	5
	Body 5200	e'	48.6721	Relative Permittivity (ϵ_r):	48.67	49.02	-0.71	10
		e''	18.4106	Conductivity (σ):	5.32	5.29	0.54	5
	Body 5500	e'	48.1931	Relative Permittivity (ϵ_r):	48.19	48.61	-0.86	10
		e''	18.7888	Conductivity (σ):	5.75	5.64	1.80	5
	Body 5800	e'	47.6927	Relative Permittivity (ϵ_r):	47.69	48.20	-1.05	10
		e''	19.0061	Conductivity (σ):	6.13	6.00	2.16	5
	Body 5825	e'	47.6782	Relative Permittivity (ϵ_r):	47.68	48.20	-1.08	10
		e''	19.0523	Conductivity (σ):	6.17	6.00	2.85	5
2/4/2012	Body 5180	e'	49.3710	Relative Permittivity (ϵ_r):	49.37	49.05	0.66	10
		e''	18.5475	Conductivity (σ):	5.34	5.27	1.34	5
	Body 5200	e'	49.3196	Relative Permittivity (ϵ_r):	49.32	49.02	0.61	10
		e''	18.5413	Conductivity (σ):	5.36	5.29	1.25	5
	Body 5500	e'	48.6672	Relative Permittivity (ϵ_r):	48.67	48.61	0.11	10
		e''	19.0353	Conductivity (σ):	5.82	5.64	3.13	5
	Body 5800	e'	48.1256	Relative Permittivity (ϵ_r):	48.13	48.20	-0.15	10
		e''	19.2286	Conductivity (σ):	6.20	6.00	3.35	5
	Body 5825	e'	48.2468	Relative Permittivity (ϵ_r):	48.25	48.20	0.10	10
		e''	19.3491	Conductivity (σ):	6.27	6.00	4.45	5
2/10/2012	Body 2450	e'	52.6105	Relative Permittivity (ϵ_r):	52.61	52.70	-0.17	5
		e''	14.7226	Conductivity (σ):	2.01	1.95	2.85	5
	Body 2410	e'	52.8199	Relative Permittivity (ϵ_r):	52.82	52.76	0.11	5
		e''	14.5539	Conductivity (σ):	1.95	1.91	2.24	5
	Body 2435	e'	52.6132	Relative Permittivity (ϵ_r):	52.61	52.73	-0.21	5
		e''	14.5844	Conductivity (σ):	1.97	1.93	2.25	5
	Body 2460	e'	52.4794	Relative Permittivity (ϵ_r):	52.48	52.69	-0.39	5
		e''	14.7527	Conductivity (σ):	2.02	1.96	2.74	5

Tissue dielectric parameters check results continued

Date	Freq. (MHz)	Liquid Parameters		Measured	Target	Delta (%)	Limit ±(%)	
2/11/2012	Body 2450	e'	52.6485	Relative Permittivity (ϵ_r):	52.65	52.70	-0.10	5
		e"	14.6970	Conductivity (σ):	2.00	1.95	2.67	5
	Body 2410	e'	52.9747	Relative Permittivity (ϵ_r):	52.97	52.76	0.41	5
		e"	14.5432	Conductivity (σ):	1.95	1.91	2.17	5
	Body 2435	e'	52.7708	Relative Permittivity (ϵ_r):	52.77	52.73	0.08	5
		e"	14.6689	Conductivity (σ):	1.99	1.93	2.85	5
Body 2460	e'	52.6622	Relative Permittivity (ϵ_r):	52.66	52.69	-0.05	5	
	e"	14.7319	Conductivity (σ):	2.02	1.96	2.60	5	
2/14/2012	Body 2450	e'	52.6161	Relative Permittivity (ϵ_r):	52.62	52.70	-0.16	5
		e"	14.6079	Conductivity (σ):	1.99	1.95	2.05	5
	Body 2410	e'	52.7726	Relative Permittivity (ϵ_r):	52.77	52.76	0.03	5
		e"	14.4272	Conductivity (σ):	1.93	1.91	1.35	5
	Body 2435	e'	52.6741	Relative Permittivity (ϵ_r):	52.67	52.73	-0.10	5
		e"	14.5400	Conductivity (σ):	1.97	1.93	1.94	5
Body 2460	e'	52.5772	Relative Permittivity (ϵ_r):	52.58	52.69	-0.21	5	
	e"	14.6539	Conductivity (σ):	2.00	1.96	2.05	5	
2/15/2012	Body 5180	e'	51.4481	Relative Permittivity (ϵ_r):	51.45	49.05	4.90	10
		e"	18.4936	Conductivity (σ):	5.33	5.27	1.05	5
	Body 5200	e'	51.4089	Relative Permittivity (ϵ_r):	51.41	49.02	4.87	10
		e"	18.5376	Conductivity (σ):	5.36	5.29	1.23	5
	Body 5500	e'	50.8451	Relative Permittivity (ϵ_r):	50.85	48.61	4.59	10
		e"	18.9646	Conductivity (σ):	5.80	5.64	2.75	5
Body 5800	e'	50.2800	Relative Permittivity (ϵ_r):	50.28	48.20	4.32	10	
	e"	19.3714	Conductivity (σ):	6.25	6.00	4.12	5	
Body 5825	e'	50.2388	Relative Permittivity (ϵ_r):	50.24	48.20	4.23	10	
	e"	19.4094	Conductivity (σ):	6.29	6.00	4.77	5	

9. System Performance Check

The system performance check is performed prior to any usage of the system in order to verify SAR system measurement accuracy. The system performance check verifies that the system operates within its specifications of $\pm 10\%$.

9.1. System Performance Check Measurement Conditions

- The measurements were performed in the flat section of the TWIN SAM or ELI phantom, shell thickness: 2.0 ± 0.2 mm (bottom plate) filled with Body or Head simulating liquid of the following parameters.
- The DASY system with an E-Field Probe was used for the measurements.
- The dipole was mounted on the small tripod so that the dipole feed point was positioned below the center marking of the flat phantom section and the dipole was oriented parallel to the body axis (the long side of the phantom). The standard measuring distance was 10 mm (above 1 GHz) and 15 mm (below 1 GHz) from dipole center to the simulating liquid surface.
- The coarse grid with a grid spacing of 15 mm was aligned with the dipole.
For 5 GHz band - The coarse grid with a grid spacing of 10 mm was aligned with the dipole.
- Special 7x7x7 fine cube was chosen for cube.
- Distance between probe sensors and phantom surface was set to 3 mm.
For 5 GHz band - Distance between probe sensors and phantom surface was set to 2.5 mm
- The dipole input power (forward power) was 100 mW.
- The results are normalized to 1 W input power.

9.2. Reference SAR Values for System Performance Check

The reference SAR values can be obtained from the calibration certificate of system validation dipoles

System Dipole	Serial No.	Cal. Date	Freq. (MHz)	Target SAR Values (mW/g)		
				1g/10g	Head	Body
D2450V2	706	4/19/11	2450	1g	51.6	52.4
				10g	24.4	24.5
D5GHzV2	1003	8/23/11	5200	1g	76.5	74.5
				10g	21.8	20.8
			5500	1g	80.9	80.0
				10g	23.1	22.3
			5800	1g	76.3	76.3
				10g	21.7	21.2

9.3. System Performance Check Results

Date Tested	System Dipole		T.S. Liquid	SAR Measured (Normalized to 1 W)		Target (Ref. Value)	Delta (%)	Tolerance (%)
	Type	Serial No.		1g	10g			
1/27/2012	D5GHzV2 5.8 GHz	1003	Body	1g	76.0	76.3	-0.39	±10
				10g	21.80	21.2	2.83	
1/28/2012	D5GHzV2 5.2 GHz	1003	Body	1g	73.6	74.5	-1.21	±10
				10g	21.1	20.8	1.44	
2/1/2012	D5GHzV2 5.5 GHz	1003	Body	1g	82.0	80	2.50	±10
				10g	23.2	22.3	4.04	
2/4/2012	D5GHzV2 5.2 GHz	1003	Body	1g	69.60	74.5	-6.58	±10
				10g	20.00	20.8	-3.85	
2/10/2012	D2450V2	706	Body	1g	56.8	52.4	8.40	±10
				10g	26.6	24.5	8.57	
2/11/2012	D2450V2	706	Head	1g	54.2	52.4	3.44	±10
				10g	25.3	24.5	3.27	
2/14/2012	D2450V2	706	Body	1g	54.6	52.4	4.20	±10
				10g	24.9	24.5	1.63	
2/15/2012	D5GHzV2 5.5 GHz	1003	Body	1g	78.1	80	-2.38	±10
				10g	22.0	22.3	-1.35	

10. Summary of Required Test Modes

10.1. Summary of Required Test Mode for 2.4 GHz Band

Mode (802.11)	No. of Transmitters	Ch. #	Freq. (MHz)	Maximum Shipping power level from original approval (*1 See Note) (dBm)	Maximum Shipping power level from C2PC / 13" Host (dBm)	SAR Test (Yes/No)
11b Legacy	1 Tx (CDD)	1	2412	18.0	18.0	Yes
		6	2437	18.0	18.0	
		11	2462	18.0	18.0	
	2 Tx (CDD)	1	2412	18.0	18.0	Yes
		6	2437	18.0	18.0	
		11	2462	18.0	18.0	
	3 Tx (CDD)	1	2412	18.0	18.0	Yes
		6	2437	18.0	18.0	
		11	2462	18.0	18.0	
11g	1 Tx	1	2412	17.0	17.0	No (Test reduction per KDB)
		2	2417	18.0	18.0	
		6	2437	19.0	18.0	
		10	2457	20.0	18.0	
		11	2462	17.5	17.5	
	2 Tx (CDD)	1	2412	16.5	16.5	No (Test reduction per KDB)
		2	2417	18.0	18.0	
		6	2437	18.5	18.0	
		10	2457	18.5	18.0	
		11	2462	16.5	16.5	
	3 Tx (CDD)	1	2412	15.0	15.0	No (Test reduction per KDB)
		2	2422	17.0	17.0	
		6	2437	21.5	18.0	
		10	2457	17.5	17.5	
		11	2462	15.0	15.0	

Note(s):

- *1 The "Original Approval" power levels were based upon FCC modular approval testing of the BCM94331PCIEBT4 radio. These power levels were approved up to maximum regulatory levels to cover a number of different potential applications. The original maximum regulatory power levels may be reduced further by the driver for one of the following two reasons:
 - 1) For performance (i.e. non-regulatory) reasons to ensure that PER and EVM of the radio meet internal specifications.
 - 2) For application specifics. In this case the power is reduced to meet the specific SAR requirement per transmit chain over frequency band/channel as per the "Target Maximum Average Power per chain for C2PC" column.
- *2 The 11n 2Tx,3Tx HT20/HT40 "All" modes detailed apply to all of CDD/STBC/SDM modes.
- *3The power levels per transmit chain are all equivalent

Summary of Required Test Modes for 2.4 GHz Band (continued)

Mode (802.11)	No. of Transmitters	Ch. #	Freq. (MHz)	Maximum Shipping power level from original approval (*1 See Note) (dBm)	Maximum Shipping power level from C2PC / 13" Host (dBm)	SAR Test (Yes/No)
11n	HT20 (1 Tx)	1	2412	17.0	17.0	No (Test reduction per KDB)
		2	2422	18.0	18.0	
		6	2437	19.0	18.0	
		10	2457	20.0	18.0	
		11	2462	17.5	17.5	
	HT40 (1Tx)	40MHz Transmission disabled in the 2.4GHz Band				
	HT20 All *2 (2 Tx)	1	2412	16.5	16.5	No (Test reduction per KDB)
		2	2422	18.0	18.0	
		6	2437	18.5	18.0	
		10	2457	18.5	18.0	
		11	2462	16.5	16.5	
	HT40 All *2 (2Tx)	40MHz Transmission disabled in the 2.4GHz Band				
	HT20 All *2 (3 Tx)	1	2412	15.0	15.0	No (Test reduction per KDB)
		2	2422	17.0	17.0	
		6	2437	21.5	18.0	
		10	2457	17.5	17.5	
		11	2462	15.0	15.0	
	HT40 All *2 (3Tx)	40MHz Transmission disabled in the 2.4GHz Band				

Note(s):

- *1 The "Original Approval" power levels were based upon FCC modular approval testing of the BCM94331PCIEBT4 radio. These power levels were approved up to maximum regulatory levels to cover a number of different potential applications. The original maximum regulatory power levels may be reduced further by the driver for one of the following two reasons:
 - 3) For performance (i.e. non-regulatory) reasons to ensure that PER and EVM of the radio meet internal specifications.
 - 4) For application specifics. In this case the power is reduced to meet the specific SAR requirement per transmit chain over frequency band/channel as per the "Target Maximum Average Power per chain for C2PC" column.
- *2 The 11n 2Tx,3Tx HT20/HT40 "All" modes detailed apply to all of CDD/STBC/SDM modes.
- *3 The power levels per transmit chain are all equivalent

10.2. Summary of Required Test Mode for 5.2 GHz Band

Mode (802.11)	No. of Transmitters	Ch. #	Freq. (MHz)	Maximum Shipping power level from original approval (*1 See Note) (dBm)	Maximum Shipping power level from C2PC / 13" Host (dBm)	SAR Test (Yes/No)
11a	1Tx (CDD)	36	5180	14.0	14.0	Yes
		40	5200	14.0	14.0	
		44	5220	14.0	14.0	
		48	5240	14.0	14.0	
	2TX (CDD)	This mode disabled in driver.				
3Tx (CDD)	This mode disabled in driver.					
11n	HT20 SISO (1 Tx)	36	5180	14.0	14.0	No (Test reduction per KDB)
		44	5220	14.0	14.0	
		48	5240	14.0	14.0	
	HT40 SISO (1 Tx)	38	5190	15.5	15.0	Yes
		46	5230	16.5	15.0	
	HT20 CDD (2 Tx)	This mode disabled in driver.				
	HT20 STBC/SDM (2 Tx)	36	5180	11.25	11.25	No (Test reduction per KDB)
		40	5200	11.25	11.25	
		48	5240	11.25	11.25	
	HT40 CDD (2 Tx)	38	5190	10.0	10.0	No (Test reduction per KDB)
		46	5230	10.0	10.0	
	HT40 STBC (2 Tx)	38	5190	13.75	13.75	Yes (see Note *3)
		46	5230	13.75	13.75	
	HT40 SDM (2 Tx)	38	5190	13.75	13.75	No (Test reduction per KDB)
		46	5230	13.75	13.75	
	HT20 CDD (3 Tx)	This mode disabled in driver.				
	HT20 STBC (3 Tx)	36	5180	9.25	9.25	No (Test reduction per KDB)
		40	5200	9.25	9.25	
		48	5240	9.25	9.25	
	HT20 SDM (3 Tx)	36	5180	10.25	10.25	No (Test reduction per KDB)
40		5200	10.25	10.25		
48		5240	10.25	10.25		
HT40 CDD (3 Tx)	This mode disabled in driver.					
HT40 STBC (3 Tx)	38	5190	12.0	12.0	Yes (see Note *3)	
	46	5230	12.0	12.0		
HT40 SDM (3 Tx)	38	5190	12.0	12.0	No (Test reduction per KDB)	
	46	5230	12.0	12.0		

Note(s):

*1 The "Original Approval" power levels were based upon FCC modular approval testing of the BCM94331PCIEBT4 radio. These power levels were approved up to maximum regulatory levels to cover a number of different potential applications. The original maximum regulatory power levels may be reduced further by the driver for one of the following two reasons:

- 1) For performance (i.e. non-regulatory) reasons to ensure that PER and EVM of the radio meet internal specifications.
- 2) For application specifics. In this case the power is reduced to meet the specific SAR requirement per transmit chain over frequency band/channel as per the "Target Maximum Average Power per chain for C2PC" column

*2 The power levels per transmit chain are all equivalent

*3 SAR evaluation is performed at HT40 STBC mode because output power is higher vs others data rate modes.

10.3. Summary of Required Test Mode for 5.3 GHz Band

Mode (802.11)	No. of Transmitters	Ch. #	Freq. (MHz)	Maximum Shipping power level from original approval (*1 See Note) (dBm)	Maximum Shipping power level from C2PC / 13" Host (dBm)	SAR Test (Yes/No)
11a	1Tx (CDD)	52	5260	18.5	15.0	Yes
		56	5280	18.5	15.0	
		60	5300	18.5	15.0	
		64	5320	17.5	15.0	
	2Tx (CDD)	52	5260	14.5	14.5	No. Covered by HT20 STBC/SDM (2 Tx) (see Note *4)
		56	5280	14.5	14.5	
		60	5300	14.5	14.5	
		64	5320	14.5	14.5	
	3Tx (CDD)	52	5260	11.5	11.5	No. Covered by HT20 STBC/SDM (3 Tx) (see Note *4)
		56	5280	11.5	11.5	
		60	5300	11.5	11.5	
		64	5320	11.5	11.5	
11n	HT20 SISO (1 Tx)	52	5260	18.5	15.0	No (Test reduction per KDB)
		60	5300	18.5	15.0	
		64	5320	17.5	15.0	
	HT40 SISO (1 Tx)	54	5270	18.0	15.0	No (Test reduction per KDB)
		62	5310	14.0	14.0	
	HT20 CDD (2 Tx)	52	5260	14.5	14.5	No (Test reduction per KDB)
		60	5300	14.5	14.5	
		64	5320	14.5	14.5	
	HT20 STBC/SDM (2 Tx)	52	5260	17.0	15.0	Yes (see Note *3)
		56	5280	17.0	15.0	
		64	5320	14.5	14.5	
	HT40 CDD (2Tx)	54	5270	16.0	15.0	No (Test reduction per KDB)
		62	5310	13.0	13.0	
	HT40 STBC/SDM (2Tx)	54	5270	18.0	15.0	No (Test reduction per KDB)
		62	5310	15.0	15.0	
	HT20 CDD (3 Tx)	52	5260	11.5	11.5	No (Test reduction per KDB)
		60	5300	11.5	11.5	
		64	5320	11.5	11.5	
	HT20 STBC/SDM (3 Tx)	52	5260	15.5	15.0	Yes (see Note *3)
		56	5280	15.5	15.0	
		64	5320	15.5	15.0	
	HT40 CDD (3Tx)	54	5270	13.5	13.5	No (Test reduction per KDB)
		62	5310	11.5	11.5	
	HT40 STBC/SDM (3 Tx)	54	5270	18.0	15.0	No (Test reduction per KDB)
62		5310	12.5	12.5		

Note(s):

- *1 The "Original Approval" power levels were based upon FCC modular approval testing of the BCM94331PCIEBT4 radio. These power levels were approved up to maximum regulatory levels to cover a number of different potential applications. The original maximum regulatory power levels may be reduced further by the driver for one of the following two reasons:
 - 1) For performance (i.e. non-regulatory) reasons to ensure that PER and EVM of the radio meet internal specifications.
 - 2) For application specifics. In this case the power is reduced to meet the specific SAR requirement per transmit chain over frequency band/channel as per the "Target Maximum Average Power per chain for C2PC" column
- *2 The power levels per transmit chain are all equivalent
- *3 SAR evaluation is performed at HT20 STBC/SDM mode because output power is higher vs others data rate modes.
- *4 SAR evaluation is performed at STBC/SDM mode because output power is higher vs CDD mode.

10.4. Summary of Required Test Mode for 5.5 GHz Band

Mode (802.11)	No. of Transmitters	Ch. #	Freq. (MHz)	Maximum Shipping power level from original approval (*1 See Note) (dBm)	Maximum Shipping power level from C2PC / 13" Host (dBm)	SAR Test (Yes/No)
11a	1Tx (CDD)	100	5500	18.0	15.0	Yes
		104	5520	18.0	15.0	
		108	5540	18.0	15.0	
		112	5560	18.0	15.0	
		116	5580	18.0	15.0	
		120	5600	18.0	15.0	
		124	5620	18.0	15.0	
		128	5640	18.0	15.0	
		132	5660	18.0	15.0	
		136	5680	18.0	15.0	
	140	5700	18.0	15.0		
	2TX (CDD)	100	5500	14.5	14.5	No. Covered by HT20 STBC/SDM (2 Tx) (see Note *4)
		104	5520	14.5	14.5	
		108	5540	14.5	14.5	
		112	5560	14.5	14.5	
		116	5580	14.5	14.5	
		120	5600	14.5	14.5	
		124	5620	14.5	14.5	
		128	5640	14.5	14.5	
		132	5660	14.5	14.5	
		136	5680	14.5	14.5	
	140	5700	14.5	14.5		
	3TX (CDD)	100	5500	13.5	13.5	No. Covered by HT20 STBC/SDM (3 Tx) (see Note *4)
		104	5520	13.5	13.5	
		108	5540	13.5	13.5	
		112	5560	13.5	13.5	
		116	5580	13.5	13.5	
		120	5600	13.5	13.5	
		124	5620	13.5	13.5	
		128	5640	13.5	13.5	
132		5660	13.5	13.5		
136		5680	13.5	13.5		
140	5700	13.5	13.5			

Summary of Required Test Modes for 5.5 GHz Band (continued)

Mode (802.11)	No. of Transmitters	Ch. #	Freq. (MHz)	Maximum Shipping power level from original approval (*1 See Note) (dBm)	Maximum Shipping power level from C2PC / 13" Host (dBm)	SAR Test (Yes/No)
11n	HT20 SISO (1 Tx)	100	5510	18.0	15.0	No (Test reduction per KDB)
		116	5550	18.0	15.0	
		140	5670	18.0	15.0	
	HT40 SISO (1 Tx)	102	5510	15.5	15.0	No (Test reduction per KDB)
		110	5550	21.5	15.0	
		134	5670	21.5	15.0	
	HT20 CDD (2 Tx)	100	5500	14.5	14.5	No (Test reduction per KDB)
		116	5580	14.5	14.5	
		140	5700	14.5	14.5	
	HT20 STBC/SDM (2 Tx)	100	5500	14.5	14.5	Yes (see Note *3)
		116	5580	17.0	15.0	
		140	5700	17.0	15.0	
	HT40 CDD (2Tx)	102	5510	11.0	11.0	No (Test reduction per KDB)
		110	5550	16.0	15.0	
		134	5670	16.0	15.0	
	HT40 STBC/SDM (2Tx)	102	5510	13.0	13.0	No (Test reduction per KDB)
		110	5550	18.0	15.0	
		134	5670	18.0	15.0	
	HT20 CDD (3 Tx)	100	5500	13.5	13.5	No (Test reduction per KDB)
		116	5580	13.5	13.5	
		140	5700	13.5	13.5	
	HT20 STBC/SDM (3 Tx)	100	5500	15.0	15.0	Yes (see Note *3)
		116	5580	15.5	15.0	
		140	5700	15.5	15.0	
HT40 CDD (3 Tx)	102	5510	9.5	9.5	No (Test reduction per KDB)	
	110	5550	13.25	13.25		
	134	5670	13.25	13.25		
HT40 STBC/SDM (3 Tx)	102	5510	10.5	10.5	No (Test reduction per KDB)	
	110	5550	18.0	15.0		
	134	5670	18.0	15.0		

Note(s):

- *1 The "Original Approval" power levels were based upon FCC modular approval testing of the BCM94331PCIEBT4 radio. These power levels were approved up to maximum regulatory levels to cover a number of different potential applications. The original maximum regulatory power levels may be reduced further by the driver for one of the following two reasons:
 - 1) For performance (i.e. non-regulatory) reasons to ensure that PER and EVM of the radio meet internal specifications.
 - 2) For application specifics. In this case the power is reduced to meet the specific SAR requirement per transmit chain over frequency band/channel as per the "Target Maximum Average Power per chain for C2PC" column
- *2 The power levels per transmit chain are all equivalent
- *3 SAR evaluation is performed at HT20 STBC/SDM mode because output power is higher vs others data rate modes.
- *4 SAR evaluation is performed at STBC/SDM mode because output power is higher vs CDD mode.

10.5. Summary of Required Test Mode for 5.8 GHz Band

Mode (802.11)	No. of Transmitters	Ch. #	Freq. (MHz)	Maximum Shipping power level from original approval (*1 See Note) (dBm)	Maximum Shipping power level from C2PC / 13" Host (dBm)	SAR Test (Yes/No)
11a	1Tx (CDD)	149	5745	18.0	15.0	Yes
		153	5765	18.0	15.0	
		157	5785	18.0	15.0	
		161	5805	18.0	15.0	
		165	5825	18.0	15.0	
	2TX (CDD)	149	5745	18.0	15.0	Yes
		153	5765	18.0	15.0	
		157	5785	21.5	15.0	
		161	5805	18.0	15.0	
		165	5825	18.0	15.0	
	3TX (CDD)	149	5745	18.0	15.0	Yes
		153	5765	18.0	15.0	
		157	5785	19.5	15.0	
		161	5805	18.0	15.0	
		165	5825	18.0	15.0	
11n	HT20 SISO (1 Tx)	149	5745	18.0	15.0	No (Test reduction per KDB)
		157	5785	18.0	15.0	
		165	5825	18.0	15.0	
	HT40 SISO (1 Tx)	151	5755	18.0	15.0	No (Test reduction per KDB)
		159	5795	18.0	15.0	
	HT20 CDD/STBC/S DM (2 Tx)	149	5745	18.0	15.0	No (Test reduction per KDB)
		157	5785	21.5	15.0	
		165	5825	18.0	15.0	
	HT40 CDD/STBC/S DM (2 Tx)	151	5755	15.5	15.0	No (Test reduction per KDB)
		159	5795	15.5	15.0	
	HT20 CDD/SDM/S TBC (3 Tx)	149	5745	18.0	15.0	No (Test reduction per KDB)
		157	5785	19.0	15.0	
		165	5825	18.0	15.0	
	HT40 CDD (3 Tx)	151	5755	15.5	15.0	No (Test reduction per KDB)
		159	5795	15.5	15.0	
HT40 STBC/SDM (3 Tx)	151	5755	15.5	15.0	No (Test reduction per KDB)	
	159	5795	15.5	15.0		

Note(s):

*1 The "Original Approval" power levels were based upon FCC modular approval testing of the BCM94331PCIEBT4 radio. These power levels were approved up to maximum regulatory levels to cover a number of different potential applications. The original maximum regulatory power levels may be reduced further by the driver for one of the following two reasons:

- 1) For performance (i.e. non-regulatory) reasons to ensure that PER and EVM of the radio meet internal specifications.
- 2) For application specifics. In this case the power is reduced to meet the specific SAR requirement per transmit chain over frequency band/channel as per the "Target Maximum Average Power per chain for C2PC" column

*2 The power levels per transmit chain are all equivalent

11. RF Output Power Measurement

The following power measurement is based on Sec. 8 required test modes. Spot check has been conducted for all configurations that are excluded from SAR.

11.1. RF Output Power Measurement for 2.4 GHz Band

Mode (802.11)	No. of Transmitters	Ch. #	Freq. (MHz)	Target Maximum Average Power per chain for C2PC (dBm)			Measured Pwr (dBm)		
				Chain 0	Chain 1	Chain 2	Chain 0	Chain 1	Chain 2
11b	1 Tx (CDD)	1	2412	18.0			18.0		
		6	2437	18.0			18.0		
		11	2462	18.0			18.0		
		1	2412		18.0			18.0	
		6	2437		18.0			18.0	
		11	2462		18.0			18.0	
		1	2412			18.0			18.0
		6	2437			18.0			18.0
		11	2462			18.0			18.0
	2 Tx (CDD)	1	2412	18.0	18.0		18.0	18.0	
		6	2437	18.0	18.0		18.0	18.0	
		11	2462	18.0	18.0		17.9	18.0	
		1	2412	18.0		18.0	18.0		17.9
		6	2437	18.0		18.0	18.0		17.8
		11	2462	18.0		18.0	18.0		18.0
		1	2412		18.0	18.0		18.0	18.0
		6	2437		18.0	18.0		18.0	18.0
		11	2462		18.0	18.0		18.0	18.0
	3 Tx (CDD)	1	2412	18.0	18.0	18.0	17.9	18.0	17.9
		6	2437	18.0	18.0	18.0	17.8	18.0	17.7
		11	2462	18.0	18.0	18.0	17.8	18.0	17.9

11.2. RF Output Power Measurement for 5.2 GHz Band

Mode (802.11)	No. of Transmitters	Ch. #	Freq. (MHz)	Target Maximum Average Power per chain for C2PC (dBm)			Measured Pwr (dBm)		
				Chain 0	Chain 1	Chain 2	Chain 0	Chain 1	Chain 2
11a	1 Tx (CDD)	36	5180	14.0			13.9		
		40	5200	14.0			14.0		
		44	5220	14.0			14.0		
		48	5240	14.0			14.0		
		36	5180		14.0			13.9	
		40	5200		14.0			14.0	
		44	5220		14.0			14.0	
		48	5240		14.0			14.0	
		36	5180			14.0			13.9
		40	5200			14.0			14.0
		44	5220			14.0			14.0
48	5240			14.0			14.0		
11n	HT40 SISO (1 Tx)	38	5190	15.0			15.0		
		46	5230	15.0			15.0		
		38	5190		15.0			15.0	
		46	5230		15.0			15.0	
		38	5190			15.0			15.0
		46	5230			15.0			15.0
	HT40 STBC (2 Tx)	38	5190	13.75	13.75		13.50	13.75	
		46	5230	13.75	13.75		13.40	13.70	
		38	5190	13.75		13.75	13.70		13.50
		46	5230	13.75		13.75	13.60		13.55
		38	5190		13.75	13.75		13.66	13.20
		46	5230		13.75	13.75		13.75	13.30
	HT40 STBC (3 Tx)	38	5190	12.0	12.0	12.0	11.8	12.0	11.8
		46	5230	12.0	12.0	12.0	11.7	11.9	11.8

11.3. RF Output Power Measurement for 5.3 GHz Band

Mode (802.11)	No. of Transmitters	Ch. #	Freq. (MHz)	Target Maximum Average Power per chain for C2PC (dBm)			Measured Pwr (dBm)		
				Chain 0	Chain 1	Chain 2	Chain 0	Chain 1	Chain 2
11a	1 Tx (CDD)	52	5260	15.0			15.0		
		56	5280	15.0			15.0		
		60	5300	15.0			15.0		
		64	5320	15.0			14.9		
		52	5260		15.0			15.0	
		56	5280		15.0			15.0	
		60	5300		15.0			15.0	
		64	5320		15.0			15.0	
		52	5260			15.0			15.0
		56	5280			15.0			15.0
		60	5300			15.0			15.0
64	5320			15.0			15.0		
11n	HT20 STBC/SDM (2 Tx)	52	5260	15.0	15.0		14.9	15.0	
		60	5300	15.0	15.0		14.8	14.8	
		64	5320	14.5	14.5		14.4	14.5	
		52	5260	15.0		15.0	14.5		14.8
		60	5300	15.0		15.0	14.7		14.8
		64	5320	14.5		14.5	14.5		14.3
		52	5260		15.0	15.0		14.9	14.3
		60	5300		15.0	15.0		15.0	14.6
		64	5320		14.5	14.5		14.5	14.3
	HT20 STBC/SDM (3 Tx)	52	5260	15.0	15.0	15.0	14.8	15.0	14.7
		60	5300	15.0	15.0	15.0	14.8	15.0	14.7
		64	5320	15.0	15.0	15.0	14.7	15.0	14.4

11.4. RF Output Power Measurement for 5.5 GHz Band

Mode (802.11)	No. of Transmitters	Ch. #	Freq. (MHz)	Target Maximum Average Power per chain for C2PC (dBm)			Measured Pwr (dBm)		
				Chain 0	Chain 1	Chain 2	Chain 0	Chain 1	Chain 2
11a	1 Tx (CDD)	100	5500	15.0			15.0		
		104	5520	15.0			14.9		
		108	5540	15.0			14.9		
		112	5560	15.0			15.0		
		116	5580	15.0			14.9		
		120	5600	15.0			15.0		
		124	5620	15.0			15.0		
		128	5640	15.0			15.0		
		132	5660	15.0			15.0		
		136	5680	15.0			14.9		
		140	5700	15.0			15.0		
		100	5500		15.0			15.0	
		104	5520		15.0			14.9	
		108	5540		15.0			15.0	
		112	5560		15.0			15.0	
		116	5580		15.0			15.0	
		120	5600		15.0			15.0	
		124	5620		15.0			14.9	
		128	5640		15.0			15.0	
		132	5660		15.0			14.9	
		136	5680		15.0			14.9	
		140	5700		15.0			15.0	
		100	5500			15.0			15.0
		104	5520			15.0			14.9
		108	5540			15.0			14.9
		112	5560			15.0			14.9
		116	5580			15.0			14.9
		120	5600			15.0			15.0
		124	5620			15.0			15.0
		128	5640			15.0			14.9
132	5660			15.0			14.9		
136	5680			15.0			14.9		
140	5700			15.0			15.0		
11n	HT20 STBC/SDM (2 Tx)	100	5500	14.5	14.5		14.4	14.5	
		120	5600	15.0	15.0		15.0	15.0	
		140	5700	15.0	15.0		14.8	15.0	
		100	5500	14.5		14.5	14.3		14.5
		120	5600	15.0		15.0	14.8		15.0
		140	5700	15.0		15.0	14.8		15.0
	HT20 STBC/SDM (3 Tx)	100	5500		14.5	14.5		14.5	14.5
		120	5600		15.0	15.0		15.0	15.0
		140	5700		15.0	15.0		14.9	15.0
		100	5500	15.0	15.0	15.0	15.0	15.0	15.0
		120	5600	15.0	15.0	15.0	14.9	15.0	15.0
		140	5700	15.0	15.0	15.0	14.9	14.9	15.0

11.5. RF Output Power Measurement for 5.8 GHz Band

Mode (802.11)	No. of Transmitters	Ch. #	Freq. (MHz)	Target Maximum Average Power per chain for C2PC (dBm)			Measured Pwr (dBm)		
				Chain 0	Chain 1	Chain 2	Chain 0	Chain 1	Chain 2
11a	CDD 1 Tx	149	5745	15.0			15.0		
		153	5765	15.0			15.0		
		157	5785	15.0			15.0		
		161	5805	15.0			15.0		
		165	5825	15.0			15.0		
		149	5745		15.0			15.0	
		153	5765		15.0			15.0	
		157	5785		15.0			15.0	
		161	5805		15.0			15.0	
		165	5825		15.0			15.0	
		149	5745			15.0			15.0
		153	5765			15.0			15.0
		157	5785			15.0			15.0
		161	5805			15.0			15.0
		165	5825			15.0			15.0
	CDD 2 Tx	149	5745	15.0	15.0		15.0	15.0	
		157	5785	15.0	15.0		15.0	15.0	
		165	5825	15.0	15.0		15.0	15.0	
		149	5745	15.0		15.0	14.8		15.0
		157	5785	15.0		15.0	15.0		15.0
		165	5825	15.0		15.0	15.0		15.0
		149	5745		15.0	15.0		15.0	14.9
	157	5785		15.0	15.0		15.0	15.0	
	165	5825		15.0	15.0			14.9	15.0
	CDD 3 Tx	149	5745	15.0	15.0	15.0	14.8	15.0	15.0
		157	5785	15.0	15.0	15.0	14.8	15.0	15.0
		165	5825	15.0	15.0	15.0	14.9	15.0	15.0

12. Required Test Channels per KDB 248227 D01

Mode		Band	GHz	Channel	"Default Test Channels"	
					802.11b	802.11g
802.11b/g		2.4 GHz	2.412	1 [#]	√	∇
			2.437	6	√	∇
			2.462	11 [#]	√	∇
802.11a	UNII (15.407)	5.2 GHz	5.180	36	√	
			5.200	40		*
			2.220	44		*
			5.240	48	√	
		5.3 GHz	5.260	52	√	
			5.280	56		*
			5.300	60		*
			5.320	64	√	
		5.5 GHz	5.500	100		
			5.520	104	√	
			5.540	108		*
			5.560	112		*
	5.580		116	√		
	5.600		120		*	
	5.620		124	√		
	5.640		128		*	
	5.8 GHz	5.660	132		*	
		5.680	136	√		
		5.700	140		*	
		DTS (15.247)	5.745	149	√	
5.765	153			*		
5.785	157		√			
5.805	161			*		
5.825	165		√			

√ = "default test channels"

* = possible 802.11a channels with maximum average output > the "default test channels"

∇ = possible 802.11g channels with maximum average output ¼ dB ≥ the "default test channels"

[#] = when output power is reduced for channel 1 and /or 11 to meet restricted band requirements the highest output channels closest to each of these channels should be tested.

13. SAR Test Results

13.1. 2.4GHz Band

Test mode reduction considerations

- For frequency bands with an operating range of < 100 MHz, when the SAR for the highest output power channel within is ≤ 0.8 W/kg, SAR for the remaining channels is not required. Per KDB 447498 1) e) i).
- KDB 248227 - SAR is not required for 802.11g/HT20 channels when the maximum average output power is less than 1/4 dB higher than that measured on the corresponding 802.11b channels.

Lap-held

Band (GHz)	Mode (802.11)	# of Tx	Ch. #	Freq. (MHz)	Measured Pwr (dBm)			1-g SAR (W/kg)			Note
					Chain 0	Chain 1	Chain 2	Chain 0	Chain 1	Chain 2	
2.4	11b CDD	1 Tx	1	2412	18.0			0.949			
			6	2437	18.0			0.998			
			11	2462	18.0			0.887			
			1	2412		18.0			1.070		
			6	2437		18.0			1.000		
			11	2462		18.0			1.090		
			1	2412			18.0			0.980	
			6	2437			18.0			1.140	*
			11	2462			18.0			1.060	
		2 Tx	1	2412	18.0	18.0		0.929	1.070		
			6	2437	18.0	18.0		0.902	1.080		
			11	2462	17.9	18.0		0.865	1.160		
			1	2412	18.0		17.9	1.030		1.020	
			6	2437	18.0		17.8	1.060		1.040	
			11	2462	18.0		18.0	1.050		1.130	
			1	2412		18.0	18.0		1.030	1.180	
			6	2437		18.0	18.0		1.000	1.160	
			11	2462		18.0	18.0		1.060	1.180	*
		3Tx	1	2412	17.9	18.0	17.9	0.768	1.030	1.000	
			6	2437	17.8	18.0	17.7	0.766	1.060	1.020	
			11	2462	17.8	18.0	17.9	0.735	1.100	1.050	*

Note(s):

*: Worst case SAR results for the given mode/transmit condition in the corresponding frequency band.

13.2. 5 GHz Bands

Test mode reduction considerations

- For frequency bands with an operating range of < 100 MHz, when the SAR for the highest output power channel within is ≤ 0.8 W/kg, SAR for the remaining channels is not required. Per KDB 447498 1) e) i).
- For frequency bands with an operating range of < 200 MHz, when the SAR for the highest output power channel within is ≤ 0.4 W/kg, SAR for the remaining channels is not required. Per KDB 447498 1) e) ii).

Lap-held

Band (GHz)	Mode (802.11)	# of Tx	Ch. #	Freq. (MHz)	Measured Pwr (dBm)			1-g SAR (W/kg)			Note
					Chain 0	Chain 1	Chain 2	Chain 0	Chain 1	Chain 2	
5.2GHz	11a CDD	1 Tx	40	5200	14.0			0.585			
			48	5240		14.0			0.590		*
			48	5240			14.0			0.449	
	11n HT40 SISO	1 Tx	38	5190	15.0			0.794			
			38	5190		15.0			0.786		
			46	5230		15.0			0.808		*
	11n HT40 STBC	2 Tx	38	5190			15.0			0.562	
			38	5190	13.50	13.75		0.554	0.643		
			38	5190	13.70		13.50	0.568		0.407	
11n HT40 STBC	3 Tx	46	5230		13.75	13.30		0.671	0.385	*	
		38	5190	11.8	12.0	11.8	0.592	0.704	0.419	*	
5.3GHz	11a CDD	Tx	60	5300	15.0			0.650			
			52	5260		15.0			0.694		*
			64	5320			15.0			0.600	
	11n HT20 STBC/SDM	2 Tx	52	5260	14.9	15.0		0.704	0.822		
			60	5300	14.7		14.8	0.621		0.470	
			52	5260		14.9	14.3		0.842	0.484	
			60	5300		15.0	14.6		0.913	0.528	*
	11n HT20 STBC/SDM	3 Tx	52	5260	14.8	15.0	14.7	0.722	0.917	0.550	*
			60	5300	14.8	15.0	14.7	0.712	0.916	0.590	
5.5GHz	11a CDD	1 Tx	100	5500	15.0			0.891			
			120	5600	15.0			0.884			
			124	5620	15.0			0.771			
			140	5700	15.0			0.744			
			100	5500		15.0			1.05		*
			116	5580		15.0			0.987		
			120	5600		15.0			0.949		
			140	5700		15.0			0.835		
			100	5500			15.0			0.736	
	120	5600			15.0			0.745			
	124	5620			15.0			0.670			
	140	5700			15.0			0.658			
	11n HT20 STBC/SDM	2 Tx	120	5600	15.0	15.0		0.926	0.963		*
			140	5700	14.8	15.0		0.763	0.803		
			120	5600	14.8		15.0	0.823		0.745	
			140	5700	14.8		15.0	0.679		0.688	
			120	5600		15.0	15.0		0.897	0.698	
	11n HT20 STBC/SDM	3 Tx	140	5700		14.9	15.0		0.710	0.663	
100			5500	15.0	15.0	15.0	0.839	0.938	0.760	*	
120			5600	14.9	15.0	15.0	0.874	0.926	0.741		
140			5700	14.9	14.9	15.0	0.723	0.779	0.655		

5 GHz Bands continued

Band (GHz)	Mode (802.11)	# of Tx	Ch. #	Freq. (MHz)	Measured Pwr (dBm)			1-g SAR (W/kg)			Note
					Chain 0	Chain 1	Chain 2	Chain 0	Chain 1	Chain 2	
5.8GHz	11a CDD	1 Tx	149	5745	15.0			0.647			
			149	5745		15.0			0.766		*
			157	5785			15.0			0.567	
	11a CDD	2 Tx	149	5745	15.0	15.0		0.717	0.803		
			157	5785	15.0	15.0		0.735	0.752		
			165	5825	15.0	15.0		0.807	0.890		*
			157	5785	15.0		15.0	0.605		0.599	
			157	5785		15.0	15.0		0.742	0.678	
	11a CDD	3 Tx	149	5745	14.8	15.0	15.0	0.744	0.764	0.692	
			157	5785	14.8	15.0	15.0	0.752	0.766	0.692	
			165	5825	14.9	15.0	15.0	0.793	0.860	0.740	*

Note(s):

*: Worst case SAR results for the given mode/transmit condition in the corresponding frequency band.

14. Summary of Highest SAR Values

Technology/Band	Test configuration	Mode	Separation distance (mm)	Highest 1g SAR (W/kg)
WiFi 2.4 GHz	Lap-held	802.11b CDD 1Tx	0	1.140
		802.11b CDD 2Tx	0	1.180
		802.11b CDD 3Tx	0	1.100
WiFi 5.2 GHz	Lap-held	802.11a CDD 1Tx	0	0.590
		802.11n HT40 SISO 1Tx	0	0.808
		802.11n HT40 STBC 2Tx	0	0.671
		802.11n HT40 STBC 3Tx	0	0.704
WiFi 5.3 GHz	Lap-held	802.11a CDD 1Tx	0	0.694
		802.11n HT20 STBC/SDM 2Tx	0	0.913
		802.11n HT20 STBC/SDM 3Tx	0	0.917
WiFi 5.5 GHz	Lap-held	802.11a CDD 1Tx	0	1.050
		802.11n HT20 STBC/SDM 2Tx	0	0.963
		802.11n HT20 STBC/SDM 3Tx	0	0.938
WiFi 5.8 GHz	Lap-held	802.11a CDD 1Tx	0	0.766
		802.11a CDD 2Tx	0	0.890
		802.11a CDD 3Tx	0	0.860

14.1. Scaled SAR Values to the Maximum Target Output Power

The highest measured SAR results were scaled, in cases where measured output power is lower than the maximum Target output power level, in each frequency band.

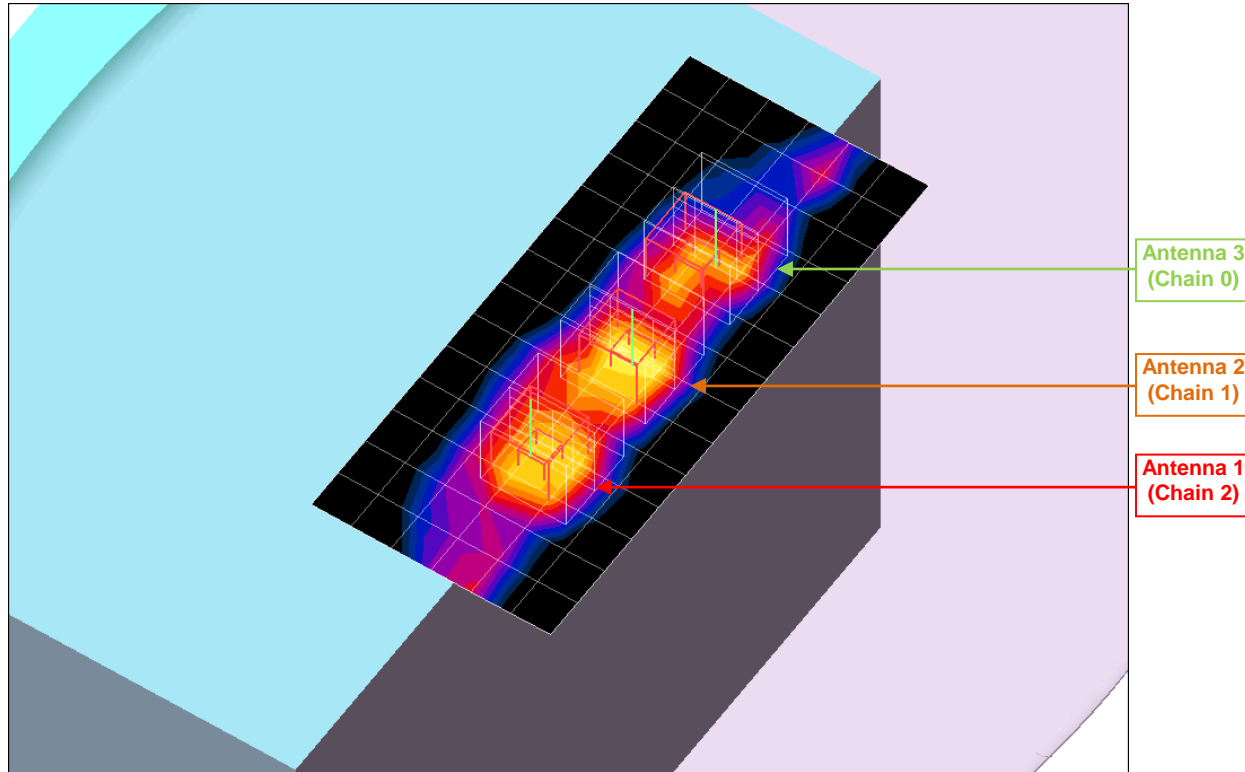
Technology /Band	Test Configuration		Mode (802.11)	# of Tx	Ch #.	Freq. (MHz)	Power (dBm)		SAR (W/kg)	
	Exposure	Position					Tune-up limit	Measured	Measured	Scaled
WiFi 2.4 GHz	Body	Lap-held	11b CDD	2 Tx	11	2462	18.0	18.0	1.180	*
WiFi 5.2 GHz	Body	Lap-held	11n HT40 SISO	1 Tx	46	5230	15.0	15.0	0.808	*
WiFi 5.3 GHz	Body	Lap-held	11n HT20 STBC/SDM	3 Tx	52	5260	15.0	15.0	0.917	*
WiFi 5.5 GHz	Body	Lap-held	11a CDD	1 Tx	100	5500	15.0	15.0	1.050	*
WiFi 5.8 GHz	Body	Lap-held	11a CDD	2 Tx	149	5745	15.0	15.0	0.890	*

Note(s):

*: SAR Scaling was not applied when the measured output power is equal or greater than the maximum target output power.

14.2. Worst-Case SAR Plots (from Summary of Highest SAR Values table)

The figure below illustrates the approximate locations of the zoom scan cubes for each of the labeled Antennas/Chains. Though the cube location for an Antenna/Chain may vary slightly based on differing operating frequency range and modes, its relation to the cube locations of other Antennas/Chains and the area scan as a whole should remain constant.



14.2.1. Worst-Case SAR Plots for 2.4 GHz Band

Test Laboratory: UL CCS SAR Lab D

Date/Time: 2/10/2012 3:55:25 PM

2.4 GHz band

Frequency: 2437 MHz; Duty Cycle: 1:1; Room Ambient Temperature: 24.0°C; Liquid Temperature: 23.0°C
Medium parameters used (interpolated): $f = 2437$ MHz; $\sigma = 1.98$ mho/m; $\epsilon_r = 52.6$; $\rho = 1000$ kg/m³;
DASY4 Configuration:

- Electronics: DAE3 Sn427; Calibrated: 1/17/2012
- Probe: EX3DV4 - SN3749; ConvF(6.66, 6.66, 6.66); Calibrated: 1/27/2012
- Sensor-Surface: 2.5mm (Mechanical Surface Detection)
- Phantom: Flat Phantom ELI4.0; Type: QDOVA001BA; Serial: SN:1003

802.11b, Chain 2_Ch 6/Area Scan (15x7x1): Measurement grid: dx=15mm, dy=15mm

[Info: Interpolated medium parameters used for SAR evaluation.](#)

Maximum value of SAR (measured) = 1.30 mW/g

802.11b, Chain 2_Ch 6/Zoom Scan (5x5x7)/Cube 0: Measurement grid: dx=8mm, dy=8mm, dz=5mm

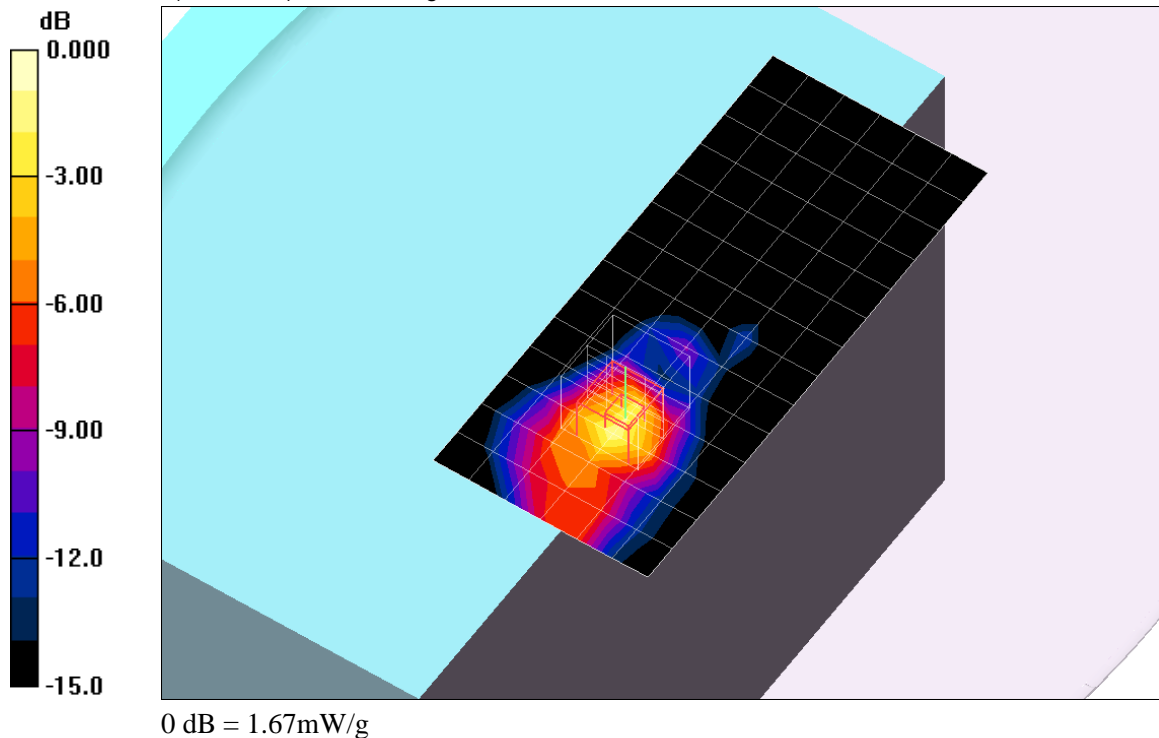
Reference Value = 25.6 V/m; Power Drift = -0.121 dB

Peak SAR (extrapolated) = 2.54 W/kg

SAR(1 g) = 1.14 mW/g; SAR(10 g) = 0.530 mW/g

[Info: Interpolated medium parameters used for SAR evaluation.](#)

Maximum value of SAR (measured) = 1.67 mW/g



Test Laboratory: UL CCS SAR Lab D

Date/Time: 2/14/2012 12:13:39 PM

2.4 GHz band

Frequency: 2462 MHz; Duty Cycle: 1:1; Room Ambient Temperature: 24.0°C; Liquid Temperature: 23.0°C
Medium parameters used (interpolated): $f = 2462$ MHz; $\sigma = 2.03$ mho/m; $\epsilon_r = 52.7$; $\rho = 1000$ kg/m³ ;
DASY4 Configuration:

- Electronics: DAE3 Sn427; Calibrated: 1/17/2012
- Probe: EX3DV4 - SN3749; ConvF(6.66, 6.66, 6.66); Calibrated: 1/27/2012
- Sensor-Surface: 2.5mm (Mechanical Surface Detection (Locations From Previous Scan Used))Sensor-Surface: 2.5mm (Mechanical Surface Detection)
- Phantom: Flat Phantom ELI4.0; Type: QDOVA001BA; Serial: SN:1003

802.11b, Chain 1,2_Ch 11/Area Scan (15x7x1): Measurement grid: dx=15mm, dy=15mm

[Info: Interpolated medium parameters used for SAR evaluation.](#)

Maximum value of SAR (measured) = 1.19 mW/g

802.11b, Chain 1_Ch 11/Zoom Scan (5x5x7)/Cube 1: Measurement grid: dx=8mm, dy=8mm, dz=5mm

Reference Value = 22.7 V/m; Power Drift = 0.123 dB

Peak SAR (extrapolated) = 2.50 W/kg

SAR(1 g) = 1.06 mW/g; SAR(10 g) = 0.485 mW/g

[Info: Interpolated medium parameters used for SAR evaluation.](#)

Maximum value of SAR (measured) = 1.59 mW/g

802.11b, Chain 2_Ch 11/Zoom Scan (5x5x7)/Cube 0: Measurement grid: dx=8mm, dy=8mm, dz=5mm

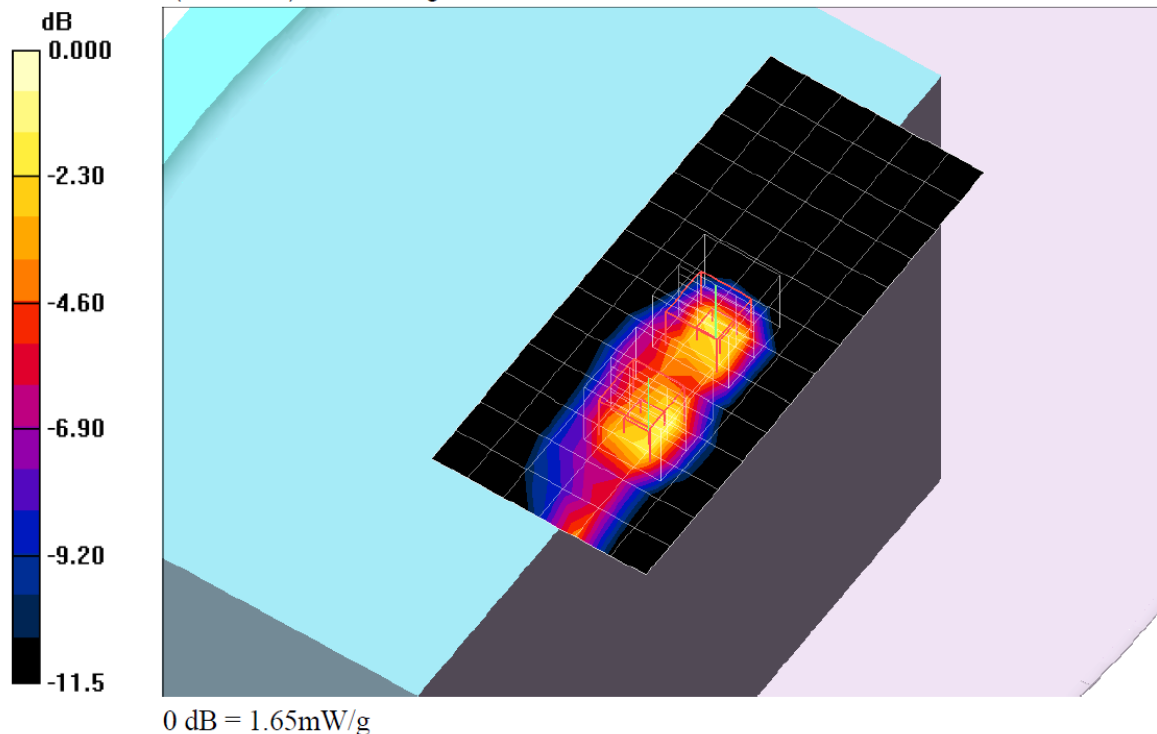
Reference Value = 22.7 V/m; Power Drift = 0.123 dB

Peak SAR (extrapolated) = 2.61 W/kg

SAR(1 g) = 1.18 mW/g; SAR(10 g) = 0.537 mW/g

[Info: Interpolated medium parameters used for SAR evaluation.](#)

Maximum value of SAR (measured) = 1.65 mW/g



Test Laboratory: UL CCS SAR Lab D

Date/Time: 2/14/2012 12:30:11 PM

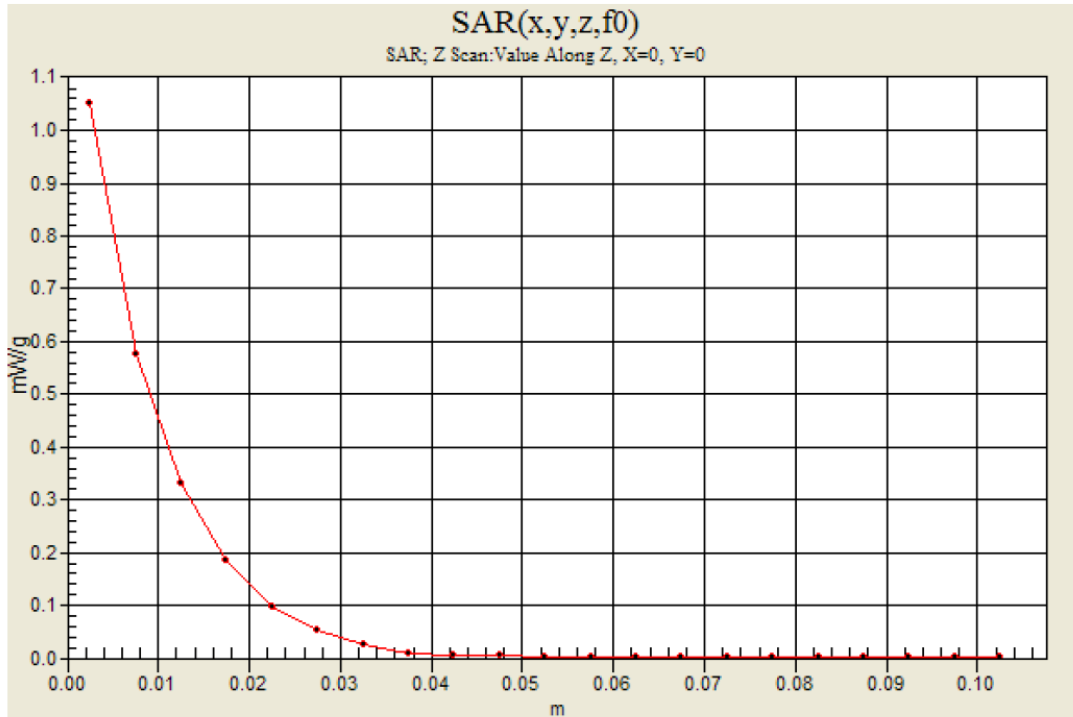
2.4 GHz band

Frequency: 2462 MHz; Duty Cycle: 1:1

802.11b, Chain 1,2_Ch 11/Z Scan (1x1x21): Measurement grid: dx=20mm, dy=20mm, dz=5mm

[Info: Interpolated medium parameters used for SAR evaluation.](#)

Maximum value of SAR (measured) = 1.05 mW/g



Test Laboratory: UL CCS SAR Lab D

Date/Time: 2/14/2012 9:34:08 PM

2.4 GHz band

Frequency: 2462 MHz; Duty Cycle: 1:1; Room Ambient Temperature: 24.0°C; Liquid Temperature: 23.0°C
Medium parameters used (interpolated): $f = 2462$ MHz; $\sigma = 2.01$ mho/m; $\epsilon_r = 52.6$; $\rho = 1000$ kg/m³;

DASY4 Configuration:

- Electronics: DAE3 Sn427; Calibrated: 1/17/2012
- Probe: EX3DV4 - SN3749; ConvF(6.66, 6.66, 6.66); Calibrated: 1/27/2012
- Sensor-Surface: 2.5mm (Mechanical Surface Detection (Locations From Previous Scan Used))Sensor-Surface: 2.5mm (Mechanical Surface Detection)
- Phantom: Flat Phantom ELI4.0; Type: QDOVA001BA; Serial: SN:1003

802.11b, Chain 0,1,2_Ch 11/Area Scan (15x7x1): Measurement grid: dx=15mm, dy=15mm

Maximum value of SAR (measured) = 1.02 mW/g

802.11b, Chain 0_Ch 11/Zoom Scan (5x5x7)/Cube 2: Measurement grid: dx=8mm, dy=8mm, dz=5mm

Reference Value = 25.5 V/m; Power Drift = -0.132 dB

Peak SAR (extrapolated) = 1.64 W/kg

SAR(1 g) = 0.735 mW/g; SAR(10 g) = 0.343 mW/g

Maximum value of SAR (measured) = 0.960 mW/g

802.11b, Chain 1_Ch 11/Zoom Scan (5x5x7)/Cube 0: Measurement grid: dx=8mm, dy=8mm, dz=5mm

Reference Value = 25.5 V/m; Power Drift = -0.132 dB

Peak SAR (extrapolated) = 2.48 W/kg

SAR(1 g) = 1.1 mW/g; SAR(10 g) = 0.496 mW/g

Maximum value of SAR (measured) = 1.65 mW/g

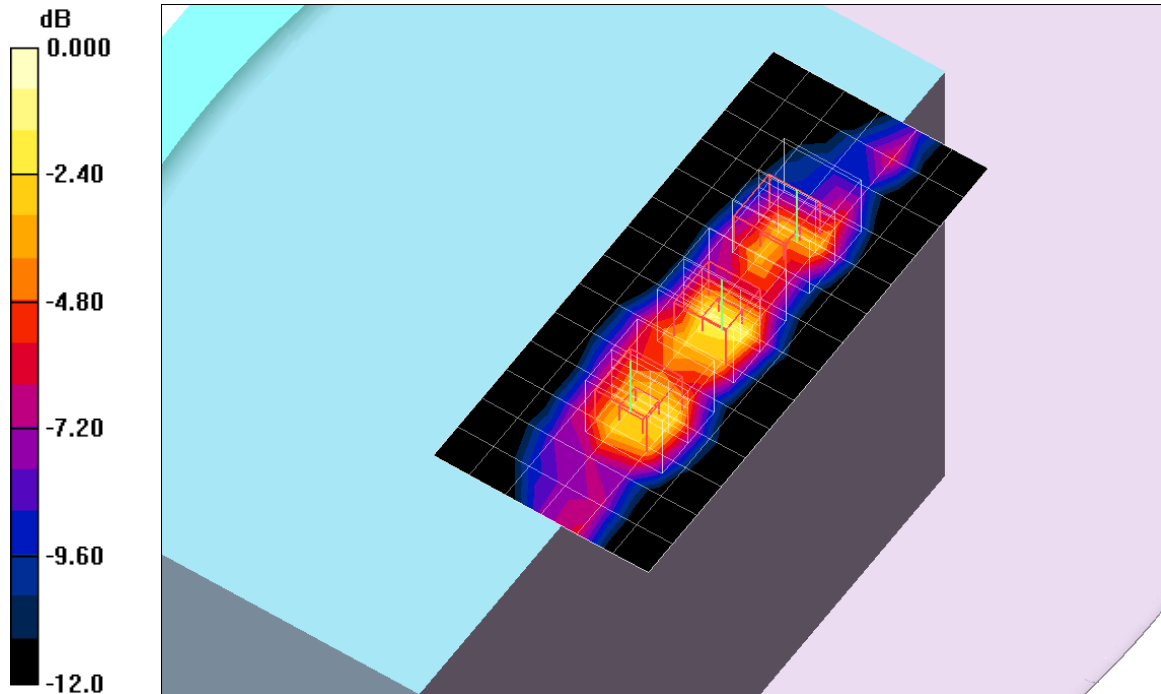
802.11b, Chain 2_Ch 11/Zoom Scan (5x5x7)/Cube 1: Measurement grid: dx=8mm, dy=8mm, dz=5mm

Reference Value = 25.5 V/m; Power Drift = -0.132 dB

Peak SAR (extrapolated) = 2.26 W/kg

SAR(1 g) = 1.05 mW/g; SAR(10 g) = 0.489 mW/g

Maximum value of SAR (measured) = 1.42 mW/g



0 dB = 1.42mW/g

14.2.2. Worst-Case SAR Plots for 5.2 GHz Band

Test Laboratory: UL CCS SAR Lab D

Date/Time: 2/4/2012 10:53:00 PM

5GHz bands

Frequency: 5240 MHz; Duty Cycle: 1:1; Room Ambient Temperature: 25.0°C; Liquid Temperature: 24.0°C

Medium parameters used: $f = 5240$ MHz; $\sigma = 5.47$ mho/m; $\epsilon_r = 49.2$; $\rho = 1000$ kg/m³;

DASY4 Configuration:

- Electronics: DAE3 Sn427; Calibrated: 1/17/2012

- Probe: EX3DV4 - SN3749; ConvF(4.23, 4.23, 4.23); Calibrated: 1/27/2012

- Sensor-Surface: 2.5mm (Mechanical Surface Detection (Locations From Previous Scan Used)) Sensor-Surface: 2.5mm (Mechanical Surface Detection)

- Phantom: Flat Phantom ELI4.0; Type: QDOVA001BA; Serial: SN:1003

802.11a, Chain 1_Ch 48/Area Scan (23x10x1): Measurement grid: dx=10mm, dy=10mm

Maximum value of SAR (measured) = 1.41 mW/g

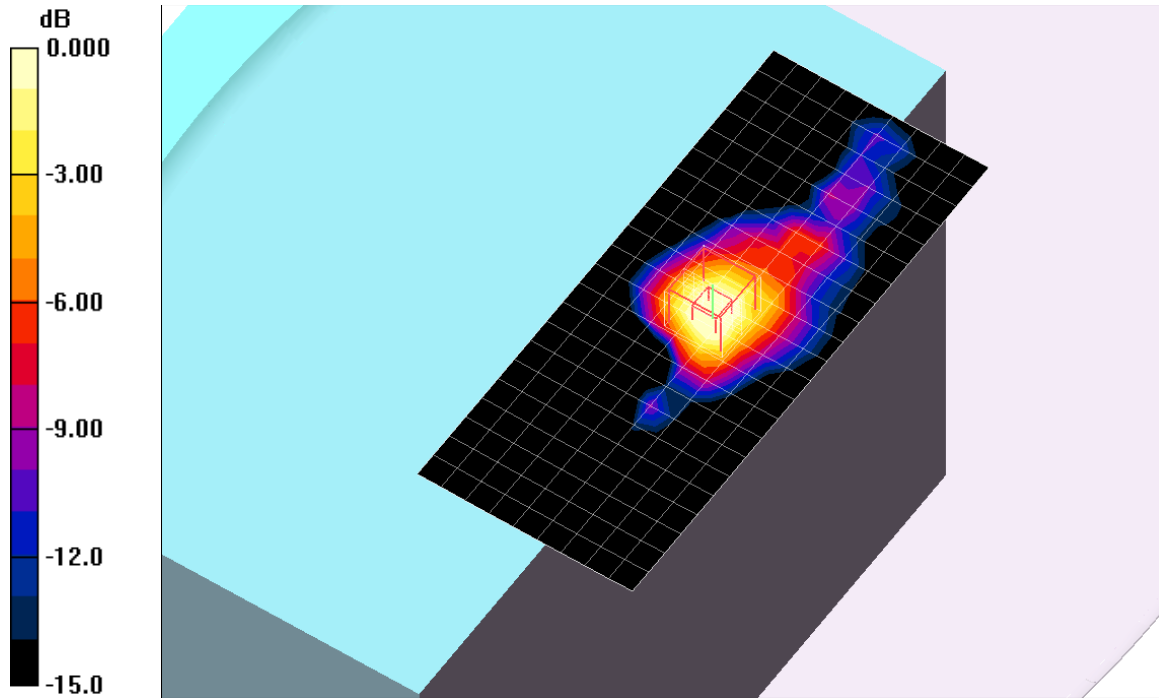
802.11a, Chain 1_Ch 48/Zoom Scan (7x7x9)/Cube 0: Measurement grid: dx=4mm, dy=4mm, dz=2.5mm

Reference Value = 13.2 V/m; Power Drift = 0.167 dB

Peak SAR (extrapolated) = 2.03 W/kg

SAR(1 g) = 0.590 mW/g; SAR(10 g) = 0.208 mW/g

Maximum value of SAR (measured) = 1.02 mW/g



0 dB = 1.02mW/g

Test Laboratory: UL CCS SAR Lab D

Date/Time: 2/4/2012 8:45:34 PM

5GHz bands

Frequency: 5230 MHz; Duty Cycle: 1:1; Room Ambient Temperature: 25.0°C; Liquid Temperature: 24.0°C

Medium parameters used: $f = 5230$ MHz; $\sigma = 5.42$ mho/m; $\epsilon_r = 49.2$; $\rho = 1000$ kg/m³ ;

DASY4 Configuration:

- Electronics: DAE3 Sn427; Calibrated: 1/17/2012

- Probe: EX3DV4 - SN3749; ConvF(4.23, 4.23, 4.23); Calibrated: 1/27/2012

- Sensor-Surface: 2.5mm (Mechanical Surface Detection (Locations From Previous Scan Used))Sensor-Surface: 2.5mm (Mechanical Surface Detection)

- Phantom: Flat Phantom ELI4.0; Type: QDOVA001BA; Serial: SN:1003

802.11n HT40,Chain 1_Ch 46/Area Scan (23x10x1): Measurement grid: dx=10mm, dy=10mm

Maximum value of SAR (measured) = 1.90 mW/g

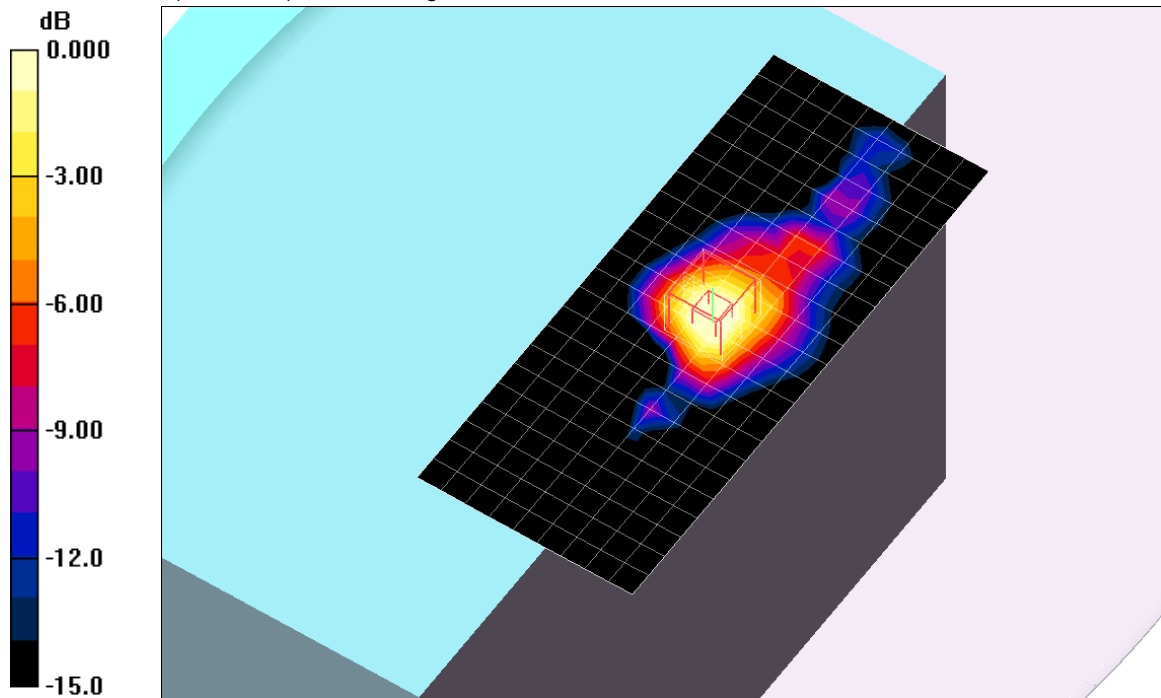
802.11n HT40,Chain 1_Ch 46/Zoom Scan (7x7x9)/Cube 0: Measurement grid: dx=4mm, dy=4mm, dz=2.5mm

Reference Value = 15.4 V/m; Power Drift = 0.166 dB

Peak SAR (extrapolated) = 2.77 W/kg

SAR(1 g) = 0.808 mW/g; SAR(10 g) = 0.281 mW/g

Maximum value of SAR (measured) = 1.41 mW/g

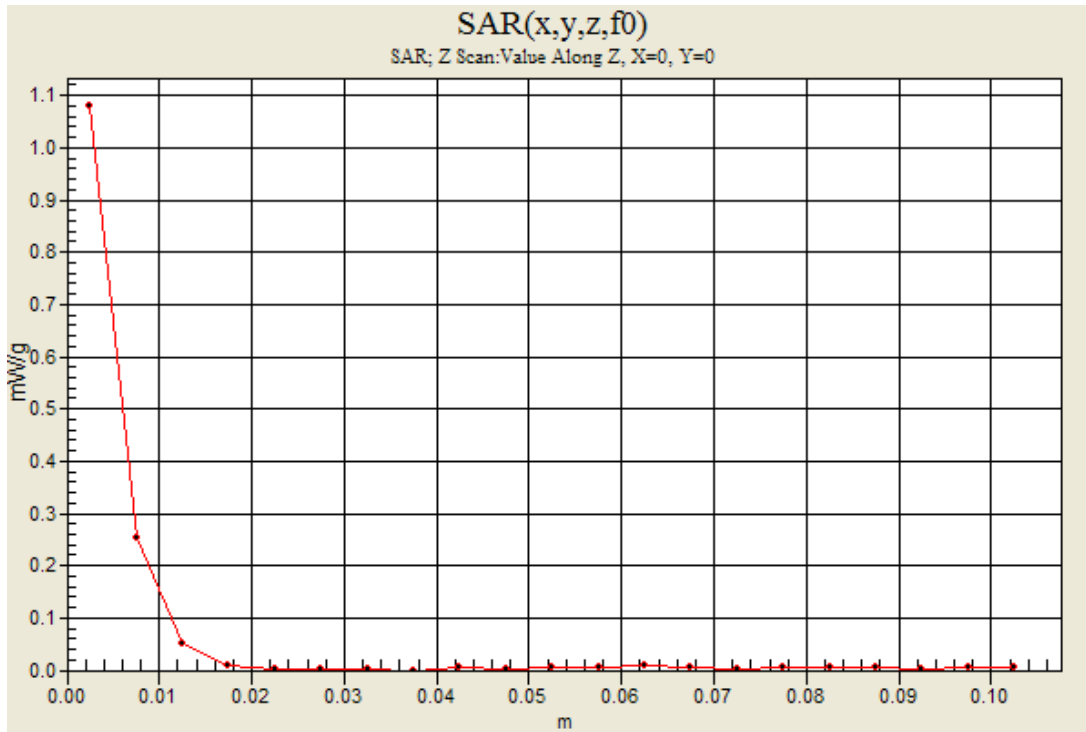


0 dB = 1.41mW/g

5GHz bands

Frequency: 5230 MHz; Duty Cycle: 1:1

802.11n HT40, Chain 1_Ch 46/Z Scan (1x1x21): Measurement grid: dx=20mm, dy=20mm, dz=5mm
Maximum value of SAR (measured) = 1.08 mW/g



Test Laboratory: UL CCS SAR Lab D

Date/Time: 2/4/2012 5:48:15 PM

5GHz bands

Frequency: 5230 MHz; Duty Cycle: 1:1; Room Ambient Temperature: 25.0°C; Liquid Temperature: 24.0°C
Medium parameters used: $f = 5230$ MHz; $\sigma = 5.42$ mho/m; $\epsilon_r = 49.2$; $\rho = 1000$ kg/m³ ;

DASY4 Configuration:

- Electronics: DAE3 Sn427; Calibrated: 1/17/2012
- Probe: EX3DV4 - SN3749; ConvF(4.23, 4.23, 4.23); Calibrated: 1/27/2012
- Sensor-Surface: 2.5mm (Mechanical Surface Detection (Locations From Previous Scan Used))Sensor-Surface: 2.5mm (Mechanical Surface Detection)
- Phantom: Flat Phantom ELI4.0; Type: QDOVA001BA; Serial: SN:1003

802.11n HT40,Chain 1,2_Ch 46/Area Scan (23x10x1): Measurement grid: dx=10mm, dy=10mm

Maximum value of SAR (measured) = 1.69 mW/g

802.11n HT40,Chain 1_Ch 46/Zoom Scan (7x7x9)/Cube 0: Measurement grid: dx=4mm, dy=4mm, dz=2.5mm

Reference Value = 14.6 V/m; Power Drift = 0.091 dB

Peak SAR (extrapolated) = 2.28 W/kg

SAR(1 g) = 0.671 mW/g; SAR(10 g) = 0.241 mW/g

Maximum value of SAR (measured) = 1.14 mW/g

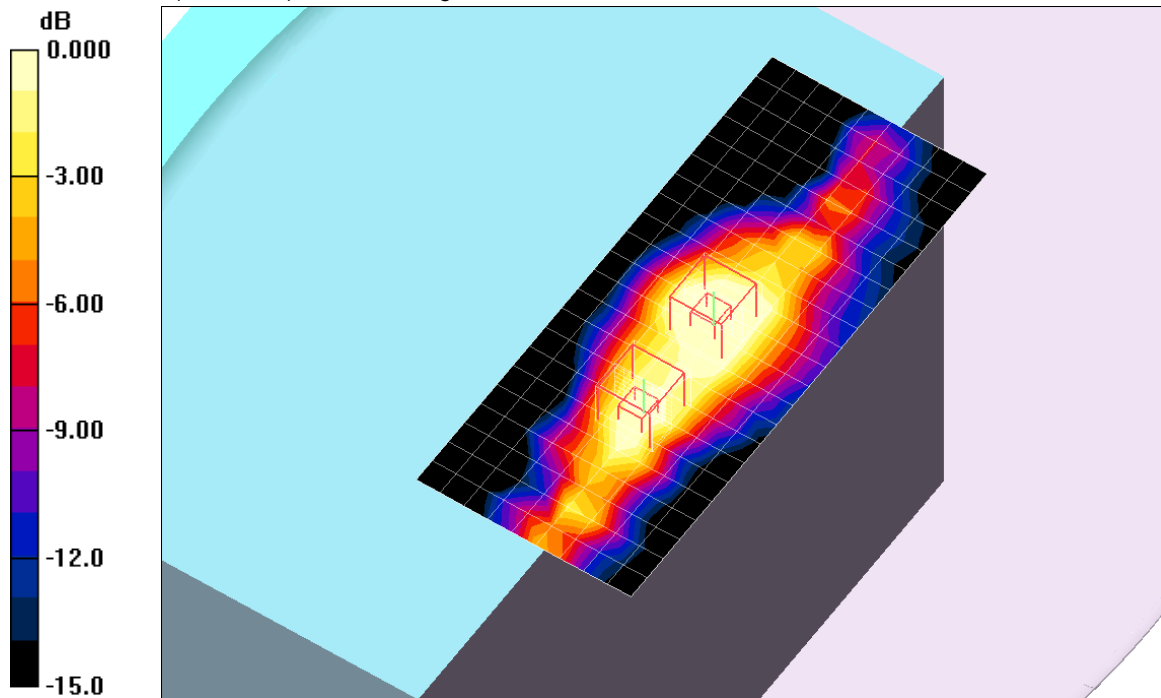
802.11n HT40,Chain 2_Ch 46/Zoom Scan (7x7x9)/Cube 1: Measurement grid: dx=4mm, dy=4mm, dz=2.5mm

Reference Value = 14.6 V/m; Power Drift = 0.091 dB

Peak SAR (extrapolated) = 1.38 W/kg

SAR(1 g) = 0.385 mW/g; SAR(10 g) = 0.135 mW/g

Maximum value of SAR (measured) = 0.654 mW/g



0 dB = 0.654mW/g

Test Laboratory: UL CCS SAR Lab D

Date/Time: 2/4/2012 4:52:02 PM

5GHz bands

Frequency: 5190 MHz; Duty Cycle: 1:1; Room Ambient Temperature: 25.0°C; Liquid Temperature: 24.0°C
Medium parameters used: $f = 5190$ MHz; $\sigma = 5.34$ mho/m; $\epsilon_r = 49.4$; $\rho = 1000$ kg/m³ ;

DASY4 Configuration:

- Electronics: DAE3 Sn427; Calibrated: 1/17/2012
- Probe: EX3DV4 - SN3749; ConvF(4.23, 4.23, 4.23); Calibrated: 1/27/2012
- Sensor-Surface: 2.5mm (Mechanical Surface Detection (Locations From Previous Scan Used))Sensor-Surface: 2.5mm (Mechanical Surface Detection)
- Phantom: Flat Phantom ELI4.0; Type: QDOVA001BA; Serial: SN:1003

802.11n HT40,Chain 0,1,2_Ch 38/Area Scan (23x10x1): Measurement grid: dx=10mm, dy=10mm
Maximum value of SAR (measured) = 1.76 mW/g

802.11n HT40,Chain 0_Ch 38/Zoom Scan (7x7x9)/Cube 1: Measurement grid: dx=4mm, dy=4mm, dz=2.5mm

Reference Value = 15.0 V/m; Power Drift = 0.144 dB

Peak SAR (extrapolated) = 2.13 W/kg

SAR(1 g) = 0.592 mW/g; SAR(10 g) = 0.208 mW/g

Maximum value of SAR (measured) = 1.05 mW/g

802.11n HT40,Chain 1_Ch 38/Zoom Scan (7x7x9)/Cube 0: Measurement grid: dx=4mm, dy=4mm, dz=2.5mm

Reference Value = 15.0 V/m; Power Drift = 0.144 dB

Peak SAR (extrapolated) = 2.29 W/kg

SAR(1 g) = 0.704 mW/g; SAR(10 g) = 0.262 mW/g

Maximum value of SAR (measured) = 1.20 mW/g

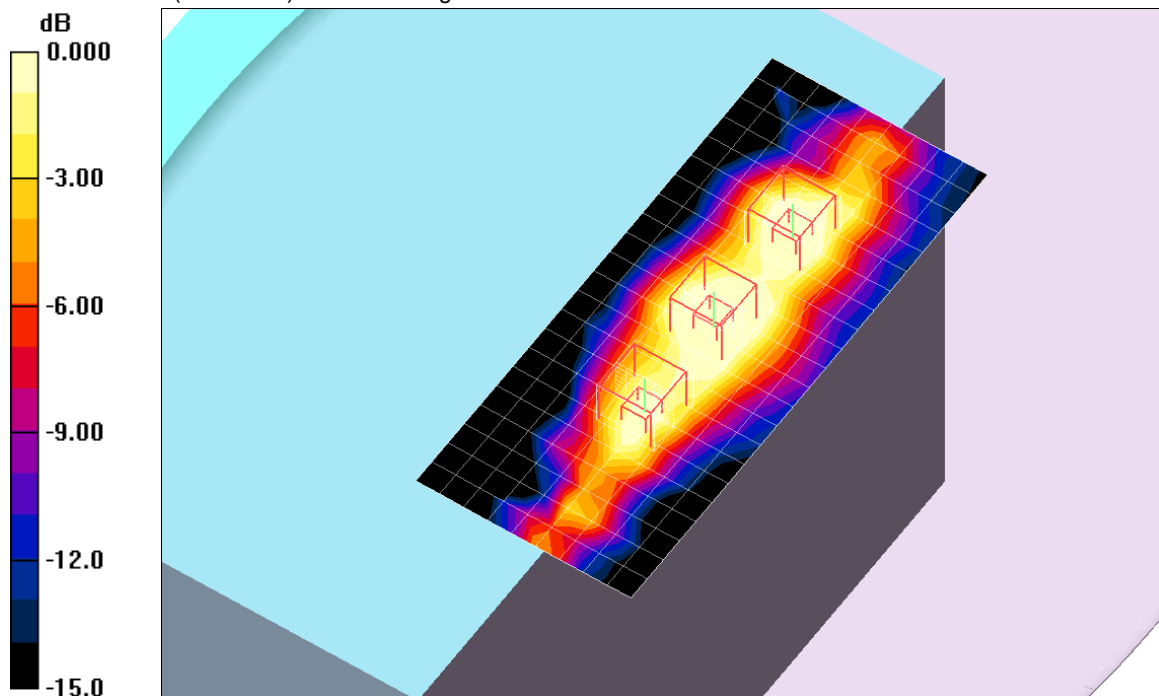
802.11n HT40,Chain 2_Ch 38/Zoom Scan (7x7x9)/Cube 2: Measurement grid: dx=4mm, dy=4mm, dz=2.5mm

Reference Value = 15.0 V/m; Power Drift = 0.144 dB

Peak SAR (extrapolated) = 1.50 W/kg

SAR(1 g) = 0.419 mW/g; SAR(10 g) = 0.145 mW/g

Maximum value of SAR (measured) = 0.722 mW/g



0 dB = 0.722mW/g

14.2.3. Worst-Case SAR Plots for 5.3 GHz Band

Test Laboratory: UL CCS SAR Lab D

Date/Time: 1/28/2012 9:42:52 PM

5GHz bands

Frequency: 5260 MHz; Duty Cycle: 1:1; Room Ambient Temperature: 25.0°C; Liquid Temperature: 24.0°C
Medium parameters used: $f = 5260$ MHz; $\sigma = 5.47$ mho/m; $\epsilon_r = 48.4$; $\rho = 1000$ kg/m³;

DASY4 Configuration:

- Electronics: DAE4 Sn1259; Calibrated: 5/3/2011
- Probe: EX3DV4 - SN3773; ConvF(3.88, 3.88, 3.88); Calibrated: 5/3/2011
- Sensor-Surface: 2.5mm (Mechanical Surface Detection (Locations From Previous Scan Used))Sensor-Surface: 2.5mm (Mechanical Surface Detection)
- Phantom: Flat Phantom ELI4.0; Type: QDOVA001BA; Serial: SN:1003

802.11a, Chain 1_Ch 52/Area Scan (23x10x1): Measurement grid: dx=10mm, dy=10mm

Maximum value of SAR (measured) = 0.967 mW/g

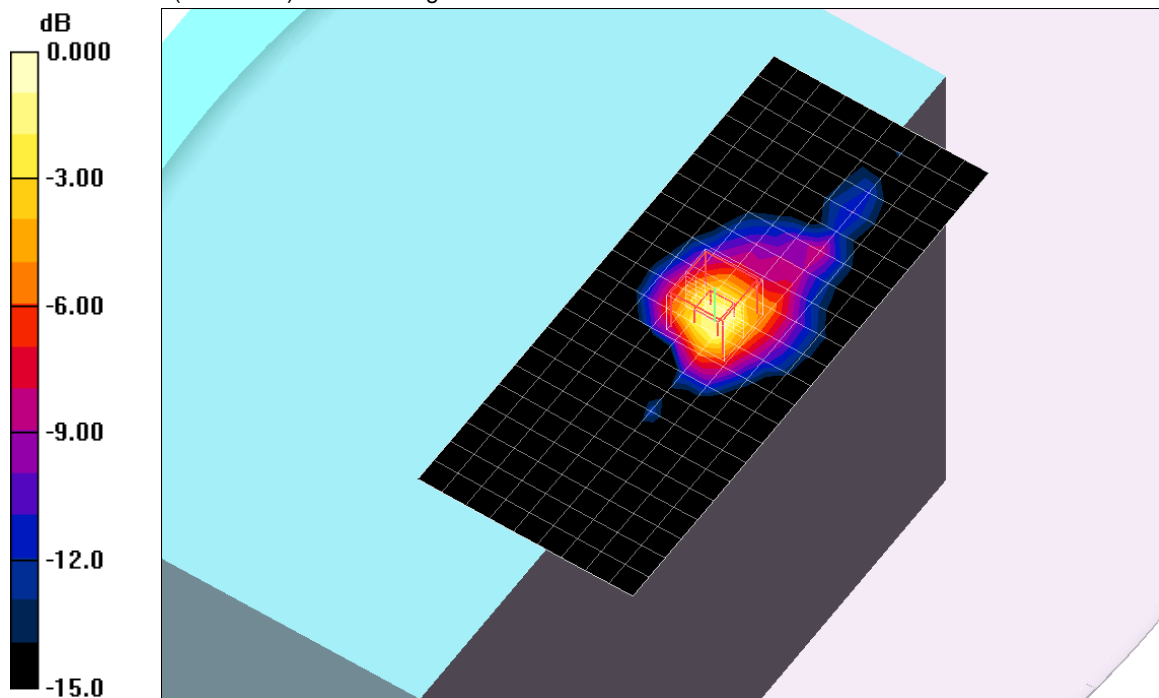
802.11a, Chain 1_Ch 52/Zoom Scan (7x7x9)/Cube 0: Measurement grid: dx=4mm, dy=4mm, dz=2.5mm

Reference Value = 13.8 V/m; Power Drift = 0.186 dB

Peak SAR (extrapolated) = 2.33 W/kg

SAR(1 g) = 0.694 mW/g; SAR(10 g) = 0.243 mW/g

Maximum value of SAR (measured) = 1.21 mW/g



0 dB = 1.21mW/g

Test Laboratory: UL CCS SAR Lab D

Date/Time: 1/28/2012 4:08:22 PM

5GHz bands

Frequency: 5300 MHz; Duty Cycle: 1:1; Room Ambient Temperature: 25.0°C; Liquid Temperature: 24.0°C

Medium parameters used: $f = 5300$ MHz; $\sigma = 5.53$ mho/m; $\epsilon_r = 48.4$; $\rho = 1000$ kg/m³ ;

DASY4 Configuration:

- Electronics: DAE4 Sn1259; Calibrated: 5/3/2011

- Probe: EX3DV4 - SN3773; ConvF(3.88, 3.88, 3.88); Calibrated: 5/3/2011

- Sensor-Surface: 2.5mm (Mechanical Surface Detection (Locations From Previous Scan Used))Sensor-Surface: 2.5mm (Mechanical Surface Detection)

- Phantom: Flat Phantom ELI4.0; Type: QDOVA001BA; Serial: SN:1003

802.11n HT20,Chain 1,2_Ch 60/Area Scan (23x10x1): Measurement grid: dx=10mm, dy=10mm

Maximum value of SAR (measured) = 1.39 mW/g

802.11n HT20,Chain 1_Ch 60/Zoom Scan (7x7x9)/Cube 0: Measurement grid: dx=4mm, dy=4mm, dz=2.5mm

Reference Value = 16.4 V/m; Power Drift = 0.143 dB

Peak SAR (extrapolated) = 3.12 W/kg

SAR(1 g) = 0.913 mW/g; SAR(10 g) = 0.322 mW/g

Maximum value of SAR (measured) = 1.57 mW/g

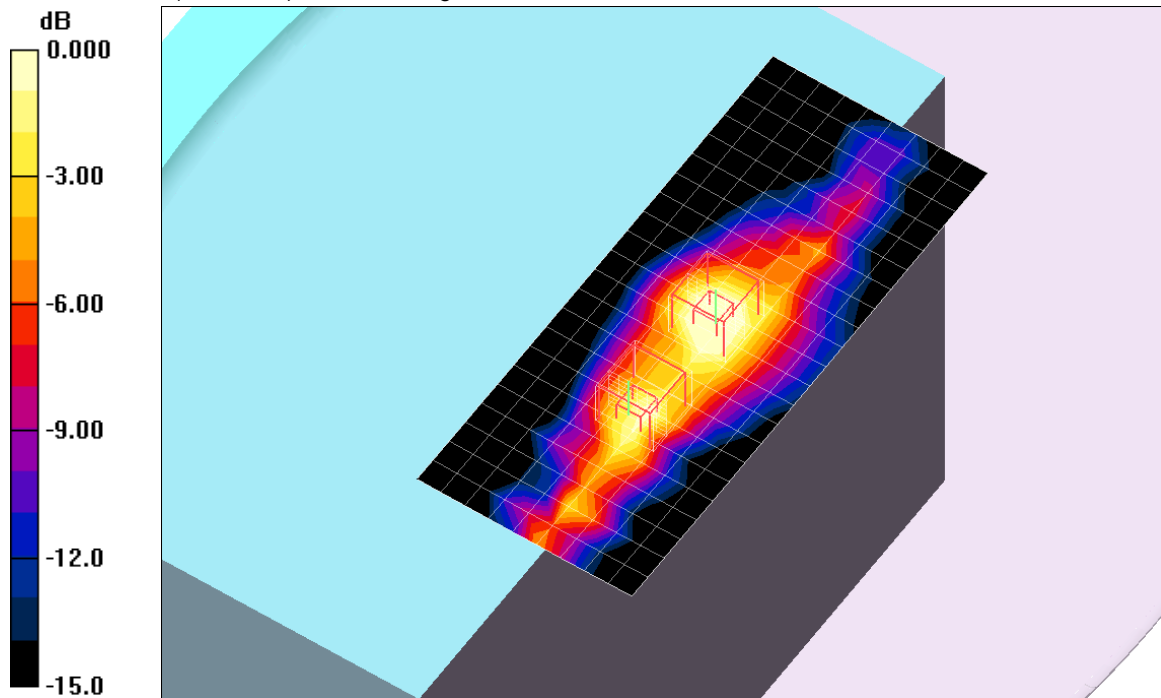
802.11n HT20,Chain 2_Ch 60/Zoom Scan (7x7x9)/Cube 1: Measurement grid: dx=4mm, dy=4mm, dz=2.5mm

Reference Value = 16.4 V/m; Power Drift = 0.143 dB

Peak SAR (extrapolated) = 1.90 W/kg

SAR(1 g) = 0.528 mW/g; SAR(10 g) = 0.172 mW/g

Maximum value of SAR (measured) = 0.927 mW/g



0 dB = 0.927mW/g

Test Laboratory: UL CCS SAR Lab D

Date/Time: 1/28/2012 12:29:57 PM

5GHz bands

Frequency: 5260 MHz; Duty Cycle: 1:1; Room Ambient Temperature: 25.0°C; Liquid Temperature: 24.0°C
Medium parameters used: $f = 5260$ MHz; $\sigma = 5.47$ mho/m; $\epsilon_r = 48.4$; $\rho = 1000$ kg/m³;

DASY4 Configuration:

- Electronics: DAE4 Sn1259; Calibrated: 5/3/2011
- Probe: EX3DV4 - SN3773; ConvF(3.88, 3.88, 3.88); Calibrated: 5/3/2011
- Sensor-Surface: 2.5mm (Mechanical Surface Detection (Locations From Previous Scan Used))Sensor-Surface: 2.5mm (Mechanical Surface Detection)
- Phantom: Flat Phantom ELI4.0; Type: QDOVA001BA; Serial: SN:1003

802.11n HT20,Chain 0,1,2_Ch 52/Area Scan (23x10x1): Measurement grid: dx=10mm, dy=10mm
Maximum value of SAR (measured) = 1.40 mW/g

802.11n HT20,Chain 0_Ch 52/Zoom Scan (7x7x9)/Cube 1: Measurement grid: dx=4mm, dy=4mm, dz=2.5mm

Reference Value = 16.8 V/m; Power Drift = 0.089 dB

Peak SAR (extrapolated) = 2.50 W/kg

SAR(1 g) = 0.722 mW/g; SAR(10 g) = 0.257 mW/g

Maximum value of SAR (measured) = 1.27 mW/g

802.11n HT20,Chain 1_Ch 52/Zoom Scan (7x7x9)/Cube 0: Measurement grid: dx=4mm, dy=4mm, dz=2.5mm

Reference Value = 16.8 V/m; Power Drift = 0.089 dB

Peak SAR (extrapolated) = 3.11 W/kg

SAR(1 g) = 0.917 mW/g; SAR(10 g) = 0.336 mW/g

Maximum value of SAR (measured) = 1.57 mW/g

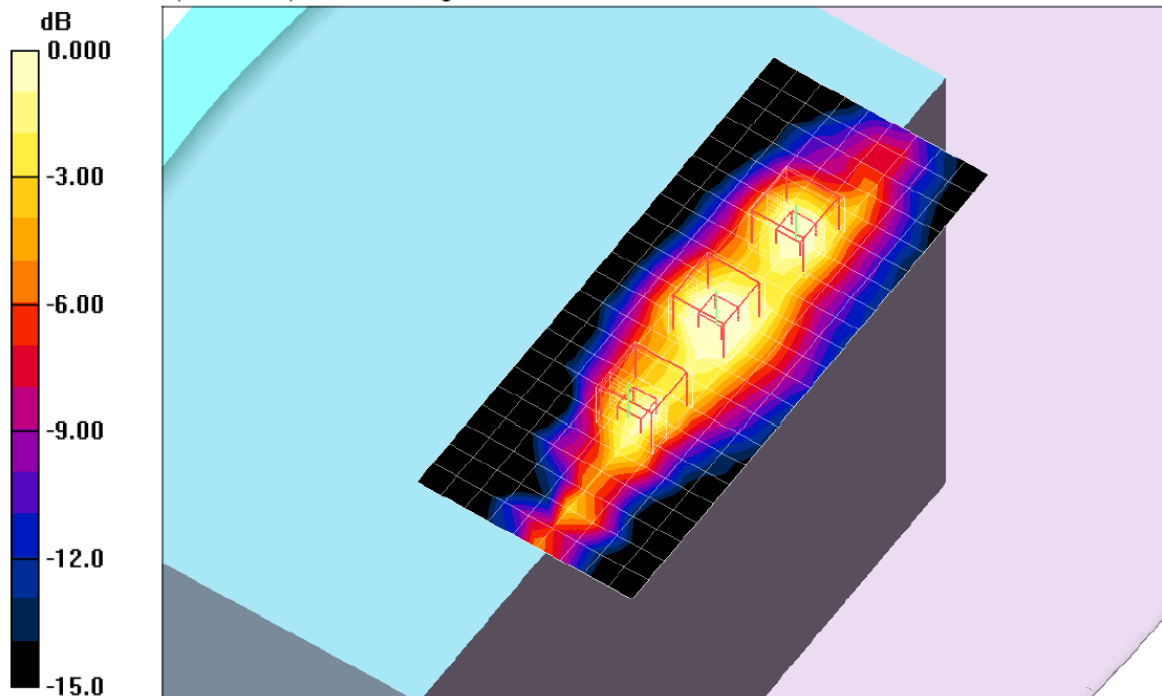
802.11n HT20,Chain 2_Ch 52/Zoom Scan (7x7x9)/Cube 2: Measurement grid: dx=4mm, dy=4mm, dz=2.5mm

Reference Value = 16.8 V/m; Power Drift = 0.089 dB

Peak SAR (extrapolated) = 1.94 W/kg

SAR(1 g) = 0.550 mW/g; SAR(10 g) = 0.179 mW/g

Maximum value of SAR (measured) = 0.923 mW/g



0 dB = 0.923mW/g

Test Laboratory: UL CCS SAR Lab D

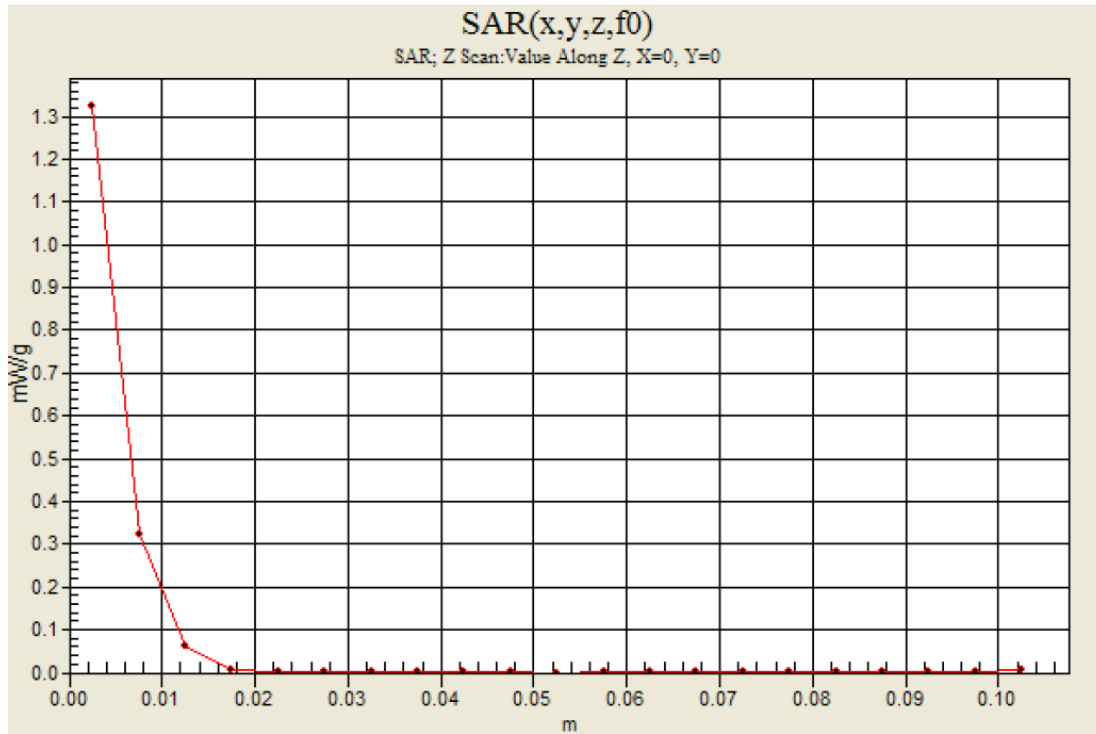
Date/Time: 1/28/2012 1:29:59 PM

5GHz bands

Frequency: 5260 MHz; Duty Cycle: 1:1

802.11n HT20, Chain 0,1,2_Ch 52/Z Scan (1x1x21): Measurement grid: dx=20mm, dy=20mm, dz=5mm

Maximum value of SAR (measured) = 1.32 mW/g



14.2.4. Worst-Case SAR Plots for 5.5 GHz Band

Test Laboratory: UL CCS SAR Lab D

Date/Time: 2/1/2012 8:38:16 PM

5GHz bands

Frequency: 5500 MHz; Duty Cycle: 1:1; Room Ambient Temperature: 25.0°C; Liquid Temperature: 24.0°C

Medium parameters used: $f = 5500$ MHz; $\sigma = 5.75$ mho/m; $\epsilon_r = 48.2$; $\rho = 1000$ kg/m³;

DASY4 Configuration:

- Electronics: DAE4 Sn1259; Calibrated: 5/3/2011

- Probe: EX3DV4 - SN3751; ConvF(3.57, 3.57, 3.57); Calibrated: 12/19/2011

- Sensor-Surface: 2.5mm (Mechanical Surface Detection (Locations From Previous Scan Used)) Sensor-Surface: 2.5mm (Mechanical Surface Detection)

- Phantom: Flat Phantom ELI4.0; Type: QDOVA001BA; Serial: SN:1003

802.11a, Chain 1_Ch 100/Area Scan (23x10x1): Measurement grid: dx=10mm, dy=10mm

Maximum value of SAR (measured) = 1.54 mW/g

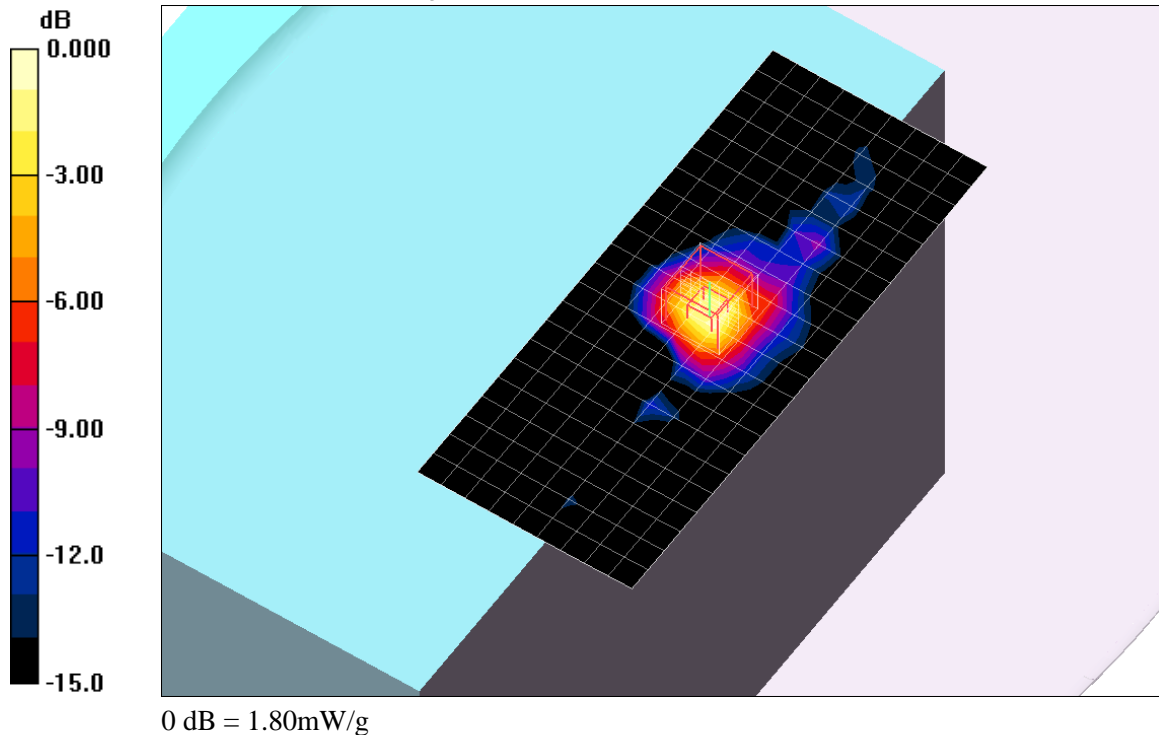
802.11a, Chain 1_Ch 100/Zoom Scan (7x7x9)/Cube 0: Measurement grid: dx=4mm, dy=4mm, dz=2.5mm

Reference Value = 16.8 V/m; Power Drift = 0.159 dB

Peak SAR (extrapolated) = 3.79 W/kg

SAR(1 g) = 1.05 mW/g; SAR(10 g) = 0.361 mW/g

Maximum value of SAR (measured) = 1.80 mW/g

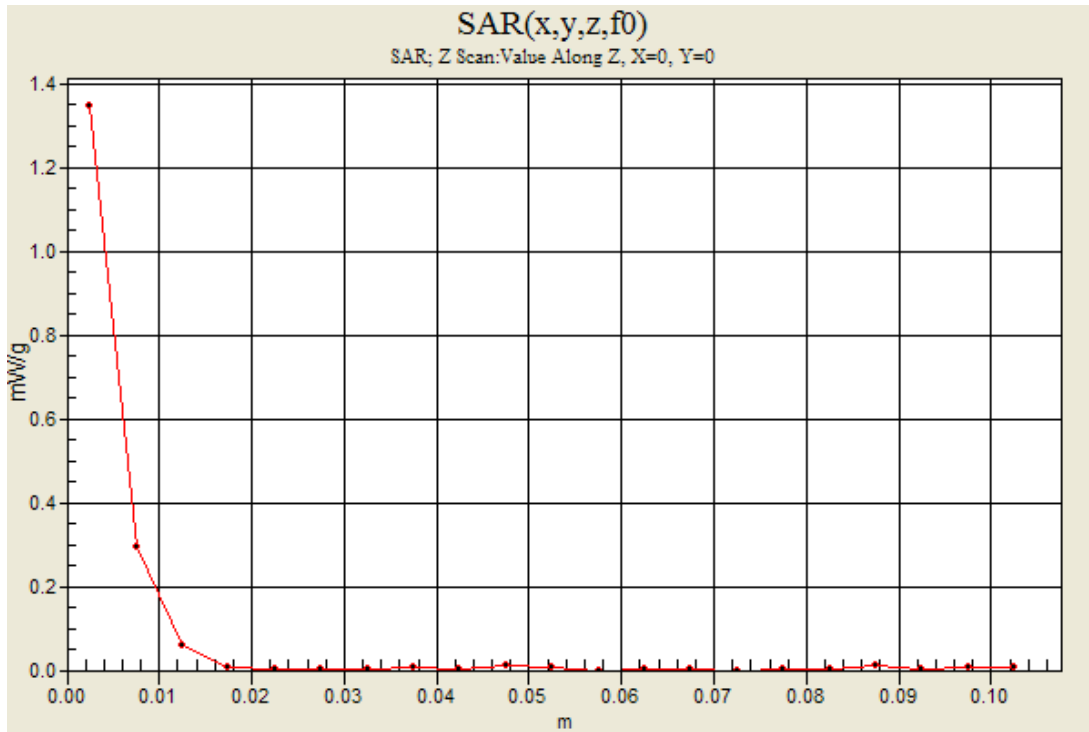


5GHz bands

Frequency: 5500 MHz; Duty Cycle: 1:1

802.11a, Chain 1_Ch 100/Z Scan (1x1x21): Measurement grid: dx=20mm, dy=20mm, dz=5mm

Maximum value of SAR (measured) = 1.35 mW/g



5GHz bands

Frequency: 5600 MHz; Duty Cycle: 1:1; Room Ambient Temperature: 25.0°C; Liquid Temperature: 24.0°C

Medium parameters used: $f = 5600$ MHz; $\sigma = 5.87$ mho/m; $\epsilon_r = 48.1$; $\rho = 1000$ kg/m³;

DASY4 Configuration:

- Electronics: DAE4 Sn1259; Calibrated: 5/3/2011

- Probe: EX3DV4 - SN3751; ConvF(3.29, 3.29, 3.29); Calibrated: 12/19/2011

- Sensor-Surface: 2.5mm (Mechanical Surface Detection (Locations From Previous Scan Used))Sensor-Surface: 2.5mm (Mechanical Surface Detection)

- Phantom: Flat Phantom ELI4.0; Type: QDOVA001BA; Serial: SN:1003

802.11n HT20,Chain 0,1_Ch 120/Area Scan (23x10x1): Measurement grid: dx=10mm, dy=10mm

Maximum value of SAR (measured) = 1.67 mW/g

802.11n HT20,Chain 0_Ch 120/Zoom Scan (7x7x9)/Cube 0: Measurement grid: dx=4mm, dy=4mm, dz=2.5mm

Reference Value = 17.4 V/m; Power Drift = 0.114 dB

Peak SAR (extrapolated) = 3.19 W/kg

SAR(1 g) = 0.926 mW/g; SAR(10 g) = 0.338 mW/g

Maximum value of SAR (measured) = 1.59 mW/g

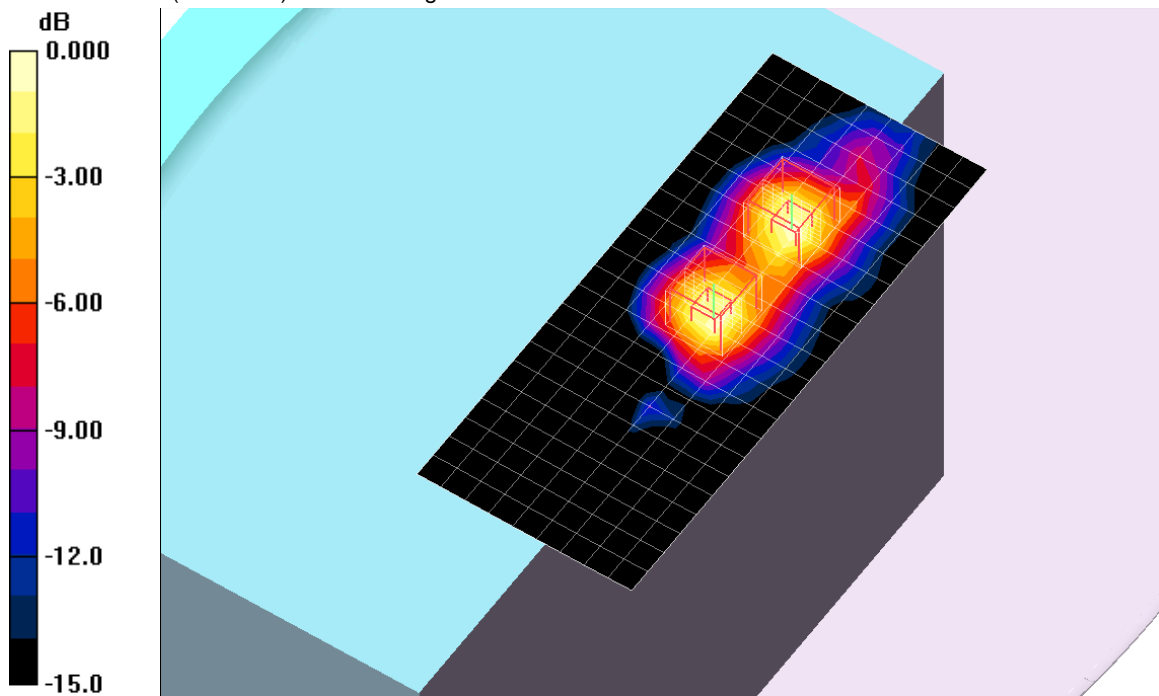
802.11n HT20,Chain 1_Ch 120/Zoom Scan (7x7x9)/Cube 1: Measurement grid: dx=4mm, dy=4mm, dz=2.5mm

Reference Value = 17.4 V/m; Power Drift = 0.114 dB

Peak SAR (extrapolated) = 3.32 W/kg

SAR(1 g) = 0.963 mW/g; SAR(10 g) = 0.338 mW/g

Maximum value of SAR (measured) = 1.68 mW/g



0 dB = 1.68mW/g

Test Laboratory: UL CCS SAR Lab D

Date/Time: 2/1/2012 8:57:21 AM

5GHz bands

Frequency: 5500 MHz; Duty Cycle: 1:1; Room Ambient Temperature: 25.0°C; Liquid Temperature: 24.0°C
Medium parameters used: $f = 5500$ MHz; $\sigma = 5.75$ mho/m; $\epsilon_r = 48.2$; $\rho = 1000$ kg/m³ ;

DASY4 Configuration:

- Electronics: DAE4 Sn1259; Calibrated: 5/3/2011
- Probe: EX3DV4 - SN3751; ConvF(3.57, 3.57, 3.57); Calibrated: 12/19/2011
- Sensor-Surface: 2.5mm (Mechanical Surface Detection)
- Phantom: Flat Phantom ELI4.0; Type: QDOVA001BA; Serial: SN:1003

802.11n HT20,Chain 0,1,2_Ch 100/Area Scan (23x10x1): Measurement grid: dx=10mm, dy=10mm
Maximum value of SAR (measured) = 1.43 mW/g

802.11n HT20,Chain 0_Ch 100/Zoom Scan (7x7x9)/Cube 1: Measurement grid: dx=4mm, dy=4mm, dz=2.5mm

Reference Value = 16.9 V/m; Power Drift = 0.145 dB

Peak SAR (extrapolated) = 3.03 W/kg

SAR(1 g) = 0.839 mW/g; SAR(10 g) = 0.305 mW/g

Maximum value of SAR (measured) = 1.45 mW/g

802.11n HT20,Chain 1_Ch 100/Zoom Scan (7x7x9)/Cube 0: Measurement grid: dx=4mm, dy=4mm, dz=2.5mm

Reference Value = 16.9 V/m; Power Drift = 0.145 dB

Peak SAR (extrapolated) = 3.21 W/kg

SAR(1 g) = 0.938 mW/g; SAR(10 g) = 0.339 mW/g

Maximum value of SAR (measured) = 1.62 mW/g

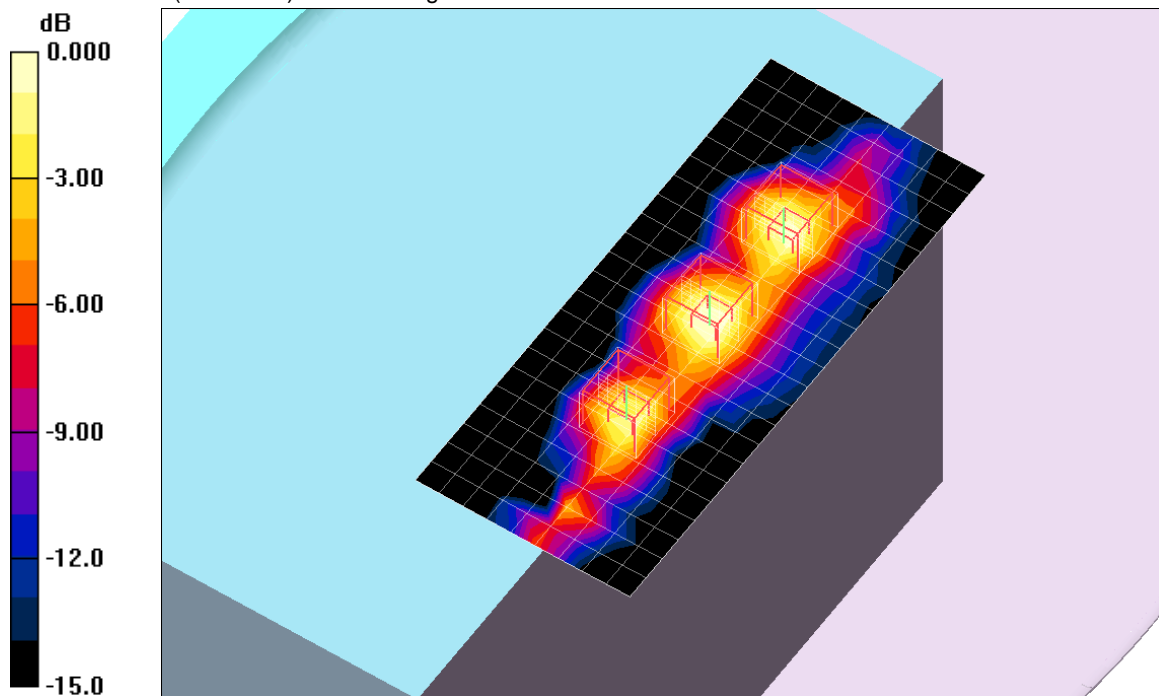
802.11n HT20,Chain 2_Ch 100/Zoom Scan (7x7x9)/Cube 2: Measurement grid: dx=4mm, dy=4mm, dz=2.5mm

Reference Value = 16.9 V/m; Power Drift = 0.145 dB

Peak SAR (extrapolated) = 2.88 W/kg

SAR(1 g) = 0.760 mW/g; SAR(10 g) = 0.253 mW/g

Maximum value of SAR (measured) = 1.39 mW/g



0 dB = 1.39mW/g

14.2.5. Worst-Case SAR Plots for 5.8 GHz Band

Test Laboratory: UL CCS SAR Lab D

Date/Time: 1/27/2012 7:42:27 PM

5GHz bands

Frequency: 5745 MHz; Duty Cycle: 1:1; Room Ambient Temperature: 25.0°C; Liquid Temperature: 24.0°C

Medium parameters used: $f = 5745$ MHz; $\sigma = 6.08$ mho/m; $\epsilon_r = 48.2$; $\rho = 1000$ kg/m³;

DASY4 Configuration:

- Electronics: DAE4 Sn1259; Calibrated: 5/3/2011
- Probe: EX3DV4 - SN3773; ConvF(3.58, 3.58, 3.58); Calibrated: 5/3/2011
- Sensor-Surface: 2.5mm (Mechanical Surface Detection (Locations From Previous Scan Used)) Sensor-Surface: 2.5mm (Mechanical Surface Detection)
- Phantom: Flat Phantom ELI4.0; Type: QDOVA001BA; Serial: SN:1003

802.11a, Chain 1_Ch 149/Area Scan (23x10x1): Measurement grid: dx=10mm, dy=10mm

Maximum value of SAR (measured) = 1.21 mW/g

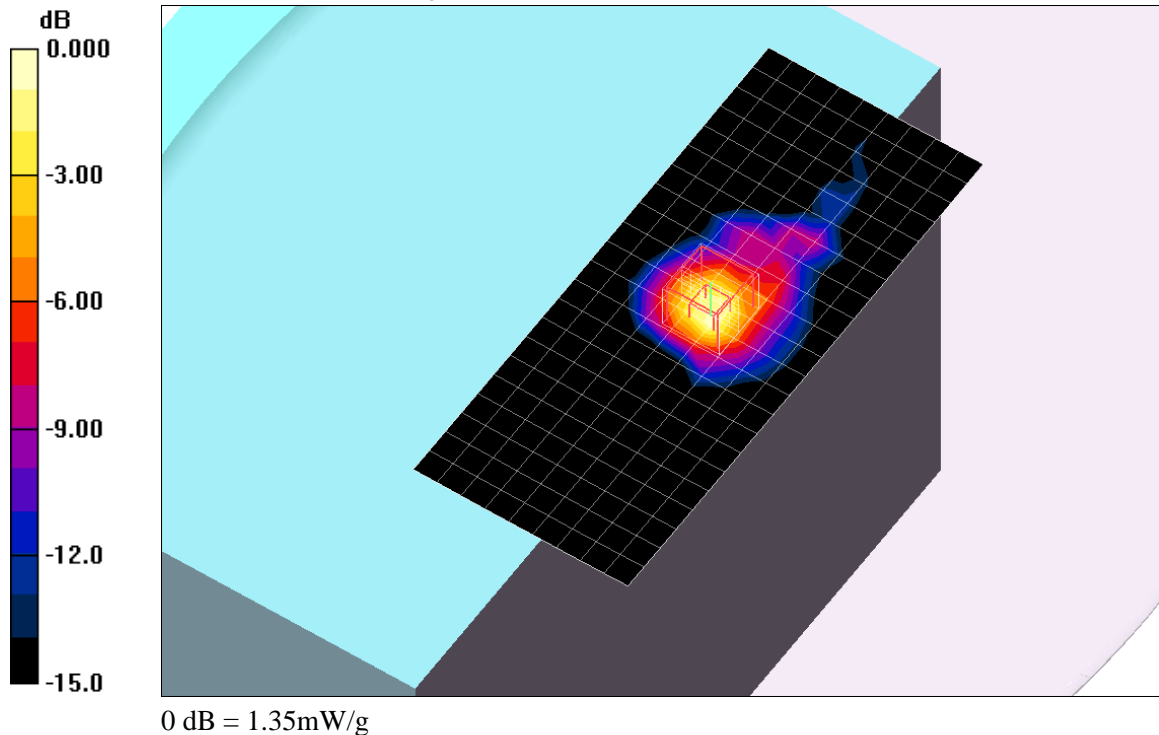
802.11a, Chain 1_Ch 149/Zoom Scan (7x7x9)/Cube 0: Measurement grid: dx=4mm, dy=4mm, dz=2.5mm

Reference Value = 14.4 V/m; Power Drift = 0.143 dB

Peak SAR (extrapolated) = 3.13 W/kg

SAR(1 g) = 0.766 mW/g; SAR(10 g) = 0.248 mW/g

Maximum value of SAR (measured) = 1.35 mW/g



Test Laboratory: UL CCS SAR Lab D

Date/Time: 1/27/2012 1:20:37 PM

5GHz bands

Frequency: 5825 MHz; Duty Cycle: 1:1; Room Ambient Temperature: 25.0°C; Liquid Temperature: 24.0°C

Medium parameters used: $f = 5825$ MHz; $\sigma = 6.19$ mho/m; $\epsilon_r = 48.1$; $\rho = 1000$ kg/m³ ;

DASY4 Configuration:

- Electronics: DAE4 Sn1259; Calibrated: 5/3/2011

- Probe: EX3DV4 - SN3773; ConvF(3.58, 3.58, 3.58); Calibrated: 5/3/2011

- Sensor-Surface: 2.5mm (Mechanical Surface Detection (Locations From Previous Scan Used))Sensor-Surface: 2.5mm (Mechanical Surface Detection)

- Phantom: Flat Phantom ELI4.0; Type: QDOVA001BA; Serial: SN:1003

802.11a,Chain 0,1_Ch 165/Area Scan (23x10x1): Measurement grid: dx=10mm, dy=10mm

Maximum value of SAR (measured) = 1.37 mW/g

802.11a,Chain 0_Ch 165/Zoom Scan (7x7x9)/Cube 1: Measurement grid: dx=4mm, dy=4mm, dz=2.5mm

Reference Value = 16.7 V/m; Power Drift = -0.048 dB

Peak SAR (extrapolated) = 3.02 W/kg

SAR(1 g) = 0.807 mW/g; SAR(10 g) = 0.292 mW/g

Maximum value of SAR (measured) = 1.46 mW/g

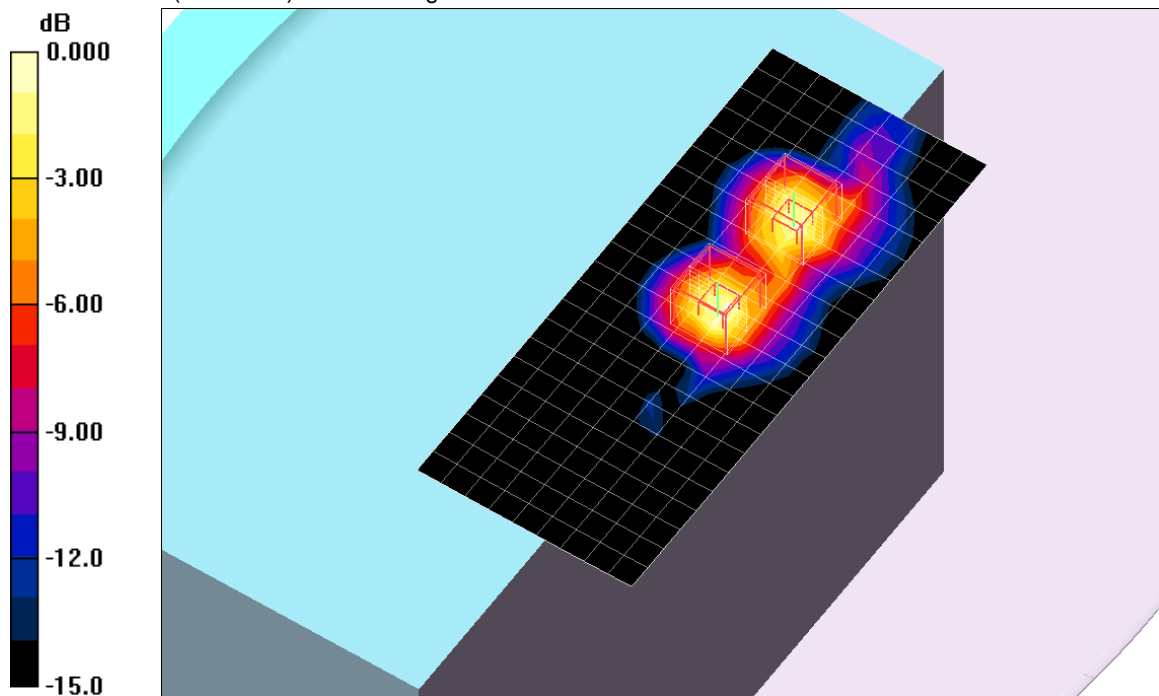
802.11a,Chain 1_Ch 165/Zoom Scan (7x7x9)/Cube 0: Measurement grid: dx=4mm, dy=4mm, dz=2.5mm

Reference Value = 16.7 V/m; Power Drift = -0.048 dB

Peak SAR (extrapolated) = 3.51 W/kg

SAR(1 g) = 0.890 mW/g; SAR(10 g) = 0.289 mW/g

Maximum value of SAR (measured) = 1.58 mW/g

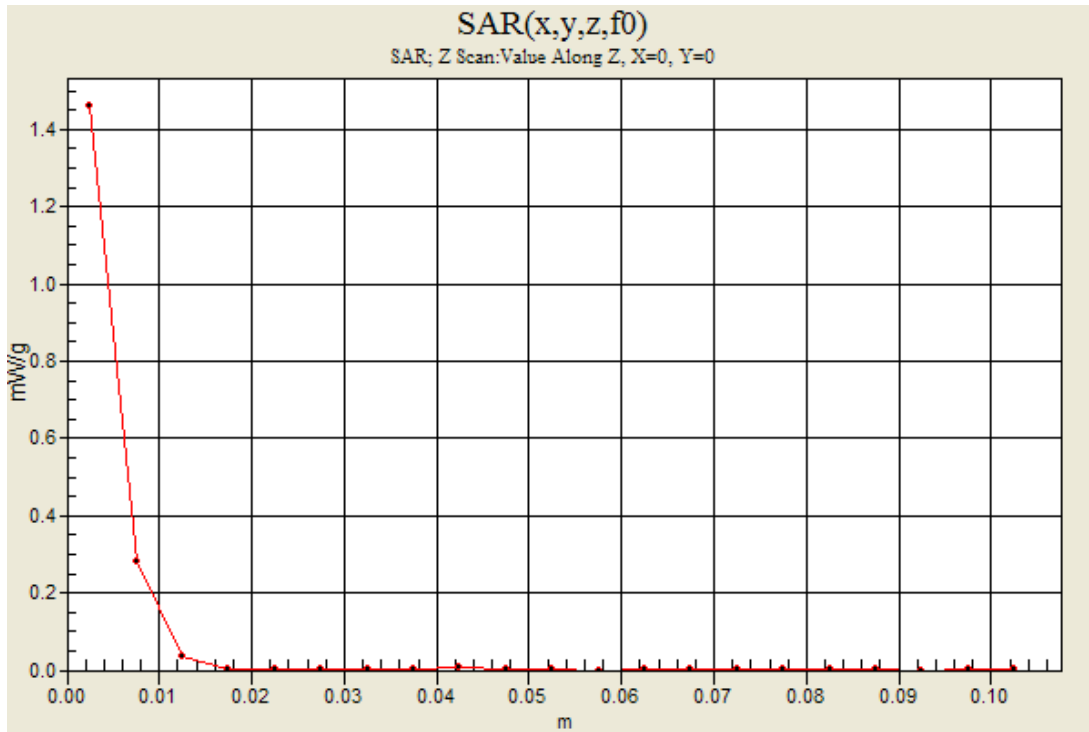


0 dB = 1.58mW/g

5GHz bands

Frequency: 5825 MHz; Duty Cycle: 1:1

802.11a, Chain 0,1_Ch 165/Z Scan (1x1x21): Measurement grid: dx=20mm, dy=20mm, dz=5mm
Maximum value of SAR (measured) = 1.46 mW/g



Test Laboratory: UL CCS SAR Lab D

Date/Time: 1/27/2012 10:35:40 AM

5GHz bands

Frequency: 5825 MHz; Duty Cycle: 1:1; Room Ambient Temperature: 25.0°C; Liquid Temperature: 24.0°C
Medium parameters used: $f = 5825$ MHz; $\sigma = 6.19$ mho/m; $\epsilon_r = 48.1$; $\rho = 1000$ kg/m³;

DASY4 Configuration:

- Electronics: DAE4 Sn1259; Calibrated: 5/3/2011
- Probe: EX3DV4 - SN3773; ConvF(3.58, 3.58, 3.58); Calibrated: 5/3/2011
- Sensor-Surface: 2.5mm (Mechanical Surface Detection)
- Phantom: Flat Phantom ELI4.0; Type: QDOVA001BA; Serial: SN:1003

802.11a,Chain 0,1,2_Ch 165/Area Scan (23x10x1): Measurement grid: dx=10mm, dy=10mm

Maximum value of SAR (measured) = 1.43 mW/g

802.11a,Chain 0_Ch 165/Zoom Scan (7x7x9)/Cube 0: Measurement grid: dx=4mm, dy=4mm, dz=2.5mm

Reference Value = 16.4 V/m; Power Drift = -0.124 dB

Peak SAR (extrapolated) = 3.07 W/kg

SAR(1 g) = 0.793 mW/g; SAR(10 g) = 0.279 mW/g

Maximum value of SAR (measured) = 1.41 mW/g

802.11a,Chain 1_Ch 165/Zoom Scan (7x7x9)/Cube 1: Measurement grid: dx=4mm, dy=4mm, dz=2.5mm

Reference Value = 16.4 V/m; Power Drift = -0.124 dB

Peak SAR (extrapolated) = 3.35 W/kg

SAR(1 g) = 0.860 mW/g; SAR(10 g) = 0.293 mW/g

Maximum value of SAR (measured) = 1.50 mW/g

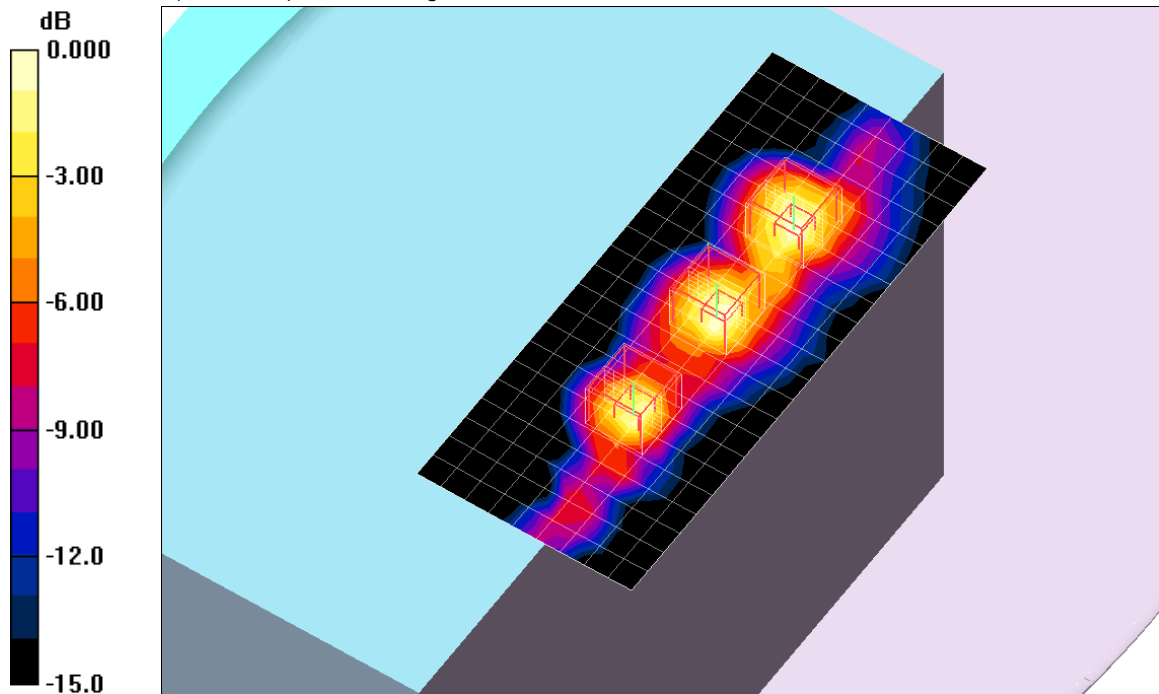
802.11a,Chain 2_Ch 165/Zoom Scan (7x7x9)/Cube 2: Measurement grid: dx=4mm, dy=4mm, dz=2.5mm

Reference Value = 16.4 V/m; Power Drift = -0.124 dB

Peak SAR (extrapolated) = 2.94 W/kg

SAR(1 g) = 0.740 mW/g; SAR(10 g) = 0.239 mW/g

Maximum value of SAR (measured) = 1.37 mW/g



0 dB = 1.37mW/g

15. Appendixes

Refer to separated files for the following appendixes.

- 15.1. System Performance Check Plots**
- 15.2. SAR Test Plots for WiFi 2.4 GHz Band**
- 15.3. SAR Test Plots for WiFi 5 GHz Bands**
- 15.4. Calibration Certificate for E-Field Probe EX3DV4 - SN 3773**
- 15.5. Calibration Certificate for E-Field Probe EX3DV4 - SN 3749**
- 15.6. Calibration Certificate for E-Field Probe EX3DV4 - SN 3751**
- 15.7. Calibration Certificate for D2450V2 - SN: 706 w/ Extended Cal. Data**
- 15.8. Calibration Certificate for D5GHzV2 - SN 1003**