

20120125_SystemPerformanceCheck-D5GHzV2 SN 1003

Frequency: 5800 MHz; Duty Cycle: 1:1; Room Ambient Temperature: 25.0°C; Liquid Temperature: 24.0°C
 Medium parameters used: $f = 5800 \text{ MHz}$; $\sigma = 6.21 \text{ mho/m}$; $\epsilon_r = 48.5$; $\rho = 1000 \text{ kg/m}^3$;
 DASY4 Configuration:

- Electronics: DAE4 Sn1259; Calibrated: 5/3/2011
- Probe: EX3DV4 - SN3773; ConvF(3.58, 3.58, 3.58); Calibrated: 5/3/2011
- Sensor-Surface: 2.5mm (Mechanical Surface Detection)
- Phantom: Flat Phantom ELI4.0; Type: QDOVA001BA; Serial: SN:1003

Body, 5800 MHz, Pin=100mW/Area Scan (7x7x1): Measurement grid: dx=10mm, dy=10mm

Maximum value of SAR (measured) = 13.4 mW/g

Body, 5800 MHz, Pin=100mW/Zoom Scan (8x8x10)/Cube 0: Measurement grid: dx=4mm, dy=4mm,

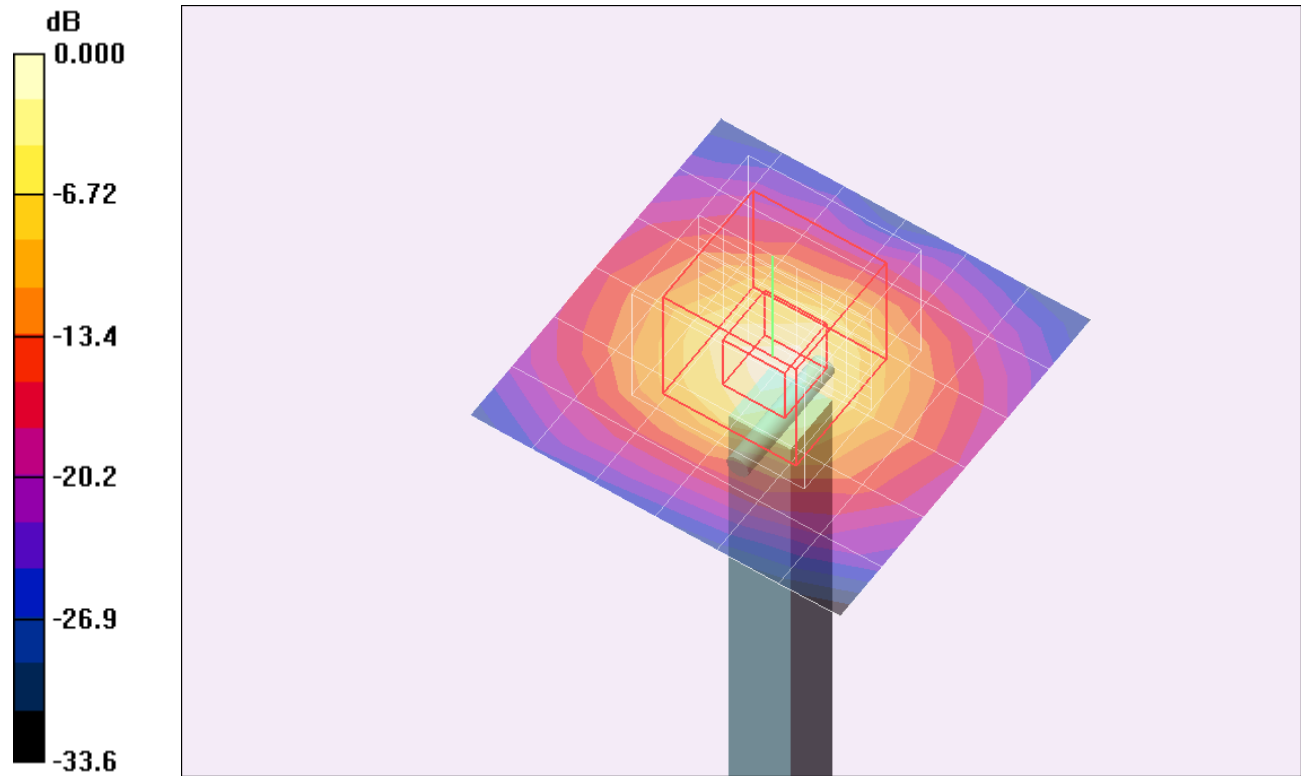
dz=2.5mm

Reference Value = 50.3 V/m; Power Drift = 0.069 dB

Peak SAR (extrapolated) = 29.4 W/kg

SAR(1 g) = 7.56 mW/g; SAR(10 g) = 2.15 mW/g

Maximum value of SAR (measured) = 14.0 mW/g



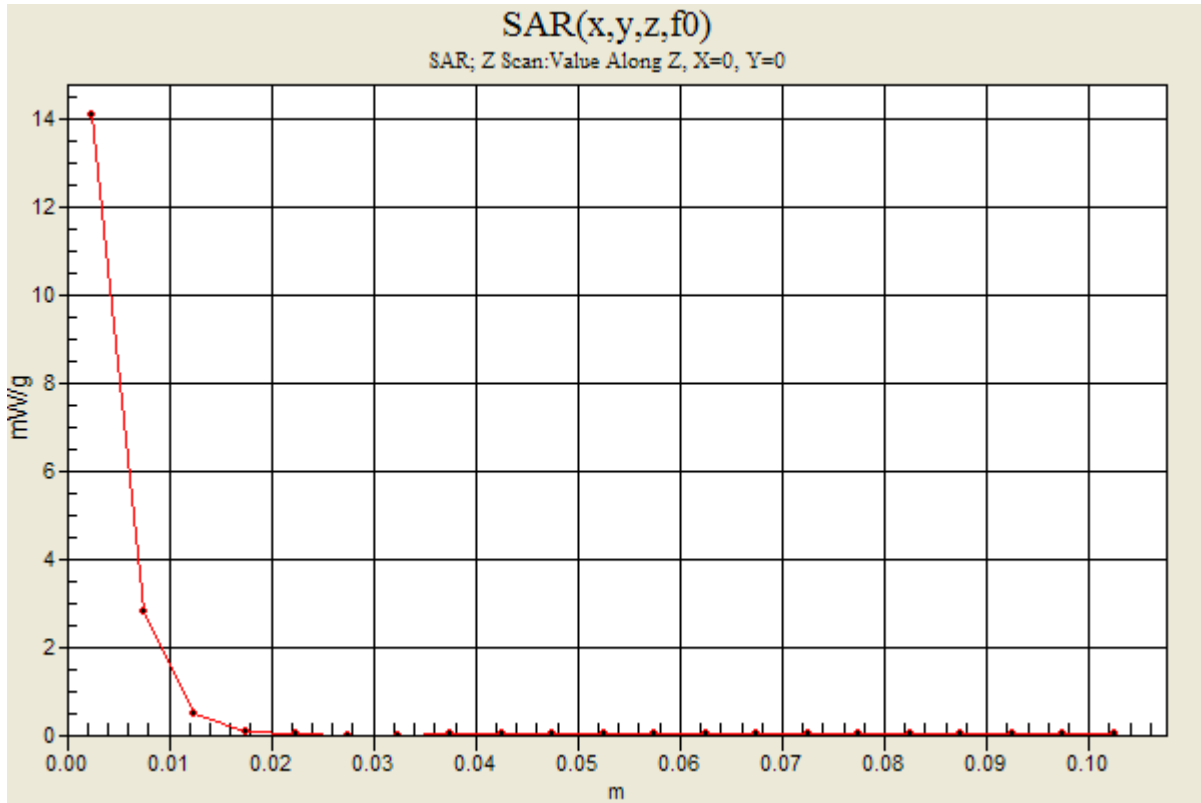
0 dB = 13.4mW/g

20120125_SystemPerformanceCheck-D5GHzV2 SN 1003

Frequency: 5800 MHz; Duty Cycle: 1:1

Body, 5800 MHz, Pin=100mW/Z Scan (1x1x21): Measurement grid: dx=20mm, dy=20mm, dz=5mm

Maximum value of SAR (measured) = 14.1 mW/g



20120130_SystemPerformanceCheck-D5GHzV2 SN 1003

Frequency: 5200 MHz; Duty Cycle: 1:1; Room Ambient Temperature: 25.0°C; Liquid Temperature: 24.0°C
 Medium parameters used: $f = 5200$ MHz; $\sigma = 5.32$ mho/m; $\epsilon_r = 48.8$; $\rho = 1000$ kg/m³;
 DASY4 Configuration:

- Electronics: DAE4 Sn1259; Calibrated: 5/3/2011
- Probe: EX3DV4 - SN3773; ConvF(4.1, 4.1, 4.1); Calibrated: 5/3/2011
- Sensor-Surface: 2.5mm (Mechanical Surface Detection)
- Phantom: Flat Phantom ELI4.0; Type: QDOVA001BA; Serial: SN:1003

Body, 5200 MHz, Pin=100mW/Area Scan (7x7x1): Measurement grid: dx=10mm, dy=10mm

Maximum value of SAR (measured) = 13.2 mW/g

Body, 5200 MHz, Pin=100mW/Zoom Scan (8x8x10)/Cube 0: Measurement grid: dx=4mm, dy=4mm,

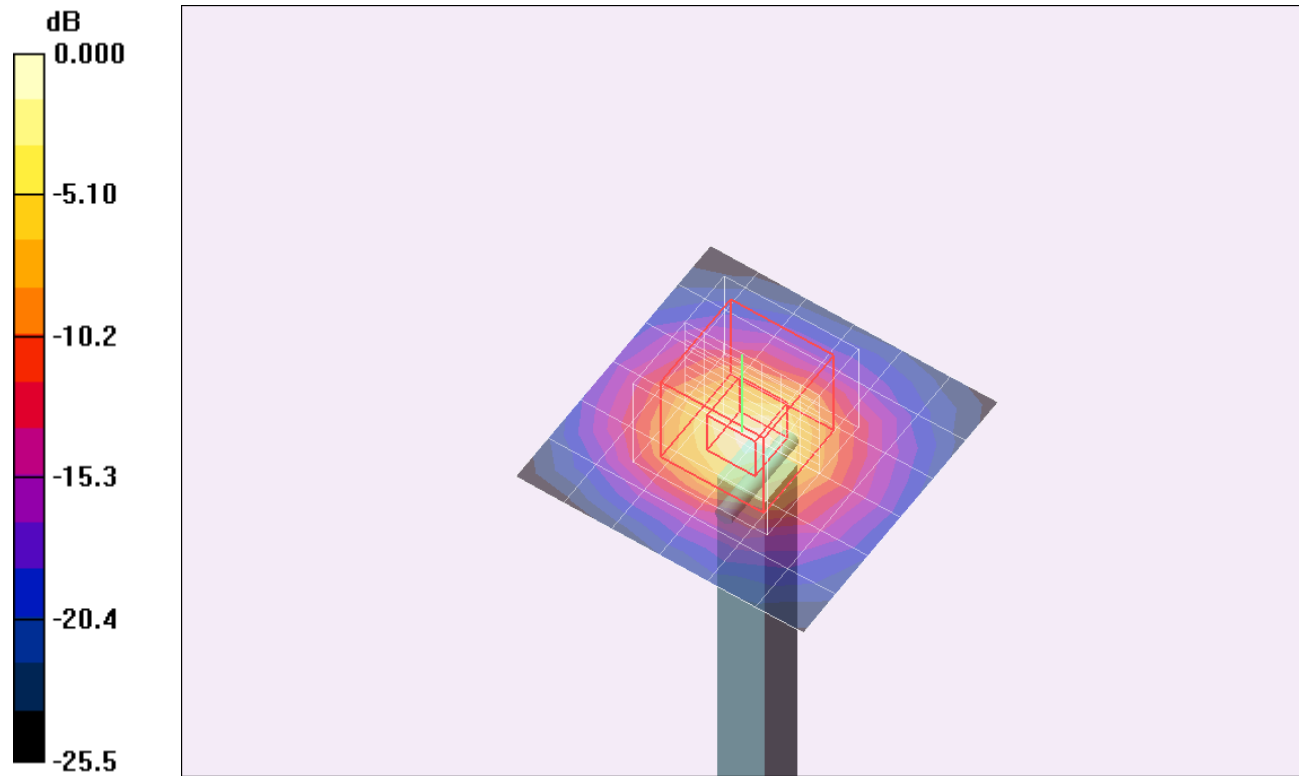
dz=2.5mm

Reference Value = 54.0 V/m; Power Drift = 0.127 dB

Peak SAR (extrapolated) = 26.3 W/kg

SAR(1 g) = 7.32 mW/g; SAR(10 g) = 2.09 mW/g

Maximum value of SAR (measured) = 13.0 mW/g



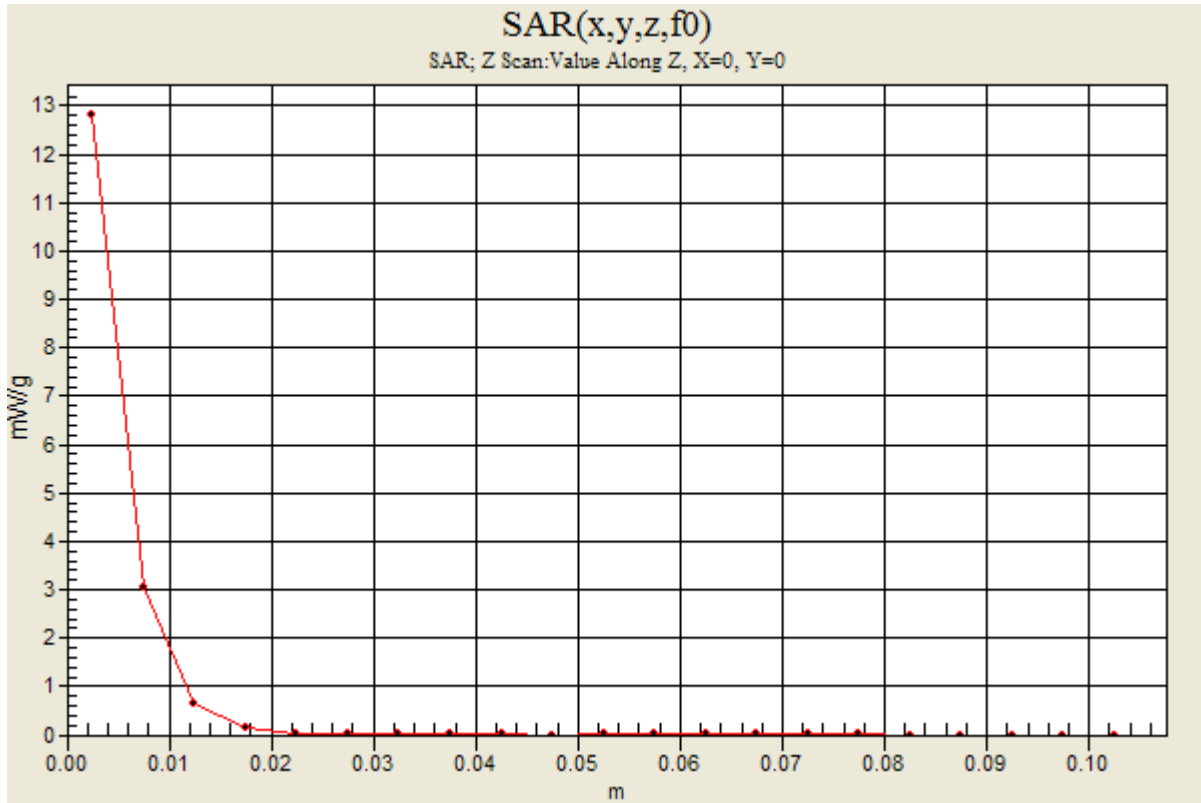
0 dB = 13.0mW/g

20120130_SystemPerformanceCheck-D5GHzV2 SN 1003

Frequency: 5200 MHz; Duty Cycle: 1:1

Body, 5200 MHz, Pin=100mW/Z Scan (1x1x21): Measurement grid: dx=20mm, dy=20mm, dz=5mm

Maximum value of SAR (measured) = 12.8 mW/g



20120131_SystemPerformanceCheck-D5GHzV2 SN 1003

Frequency: 5500 MHz; Duty Cycle: 1:1; Room Ambient Temperature: 25.0°C; Liquid Temperature: 24.0°C
Medium parameters used: $f = 5500$ MHz; $\sigma = 5.61$ mho/m; $\epsilon_r = 49.1$; $\rho = 1000$ kg/m³;

DASY4 Configuration:

- Electronics: DAE4 Sn1259; Calibrated: 5/3/2011
- Probe: EX3DV4 - SN3773; ConvF(3.49, 3.49, 3.49); Calibrated: 5/3/2011
- Sensor-Surface: 2.5mm (Mechanical Surface Detection)
- Phantom: Flat Phantom ELI4.0; Type: QDOVA001BA; Serial: SN:1003

Body, 5500 MHz, Pin=100mW/Area Scan (7x7x1): Measurement grid: dx=10mm, dy=10mm

Maximum value of SAR (measured) = 14.6 mW/g

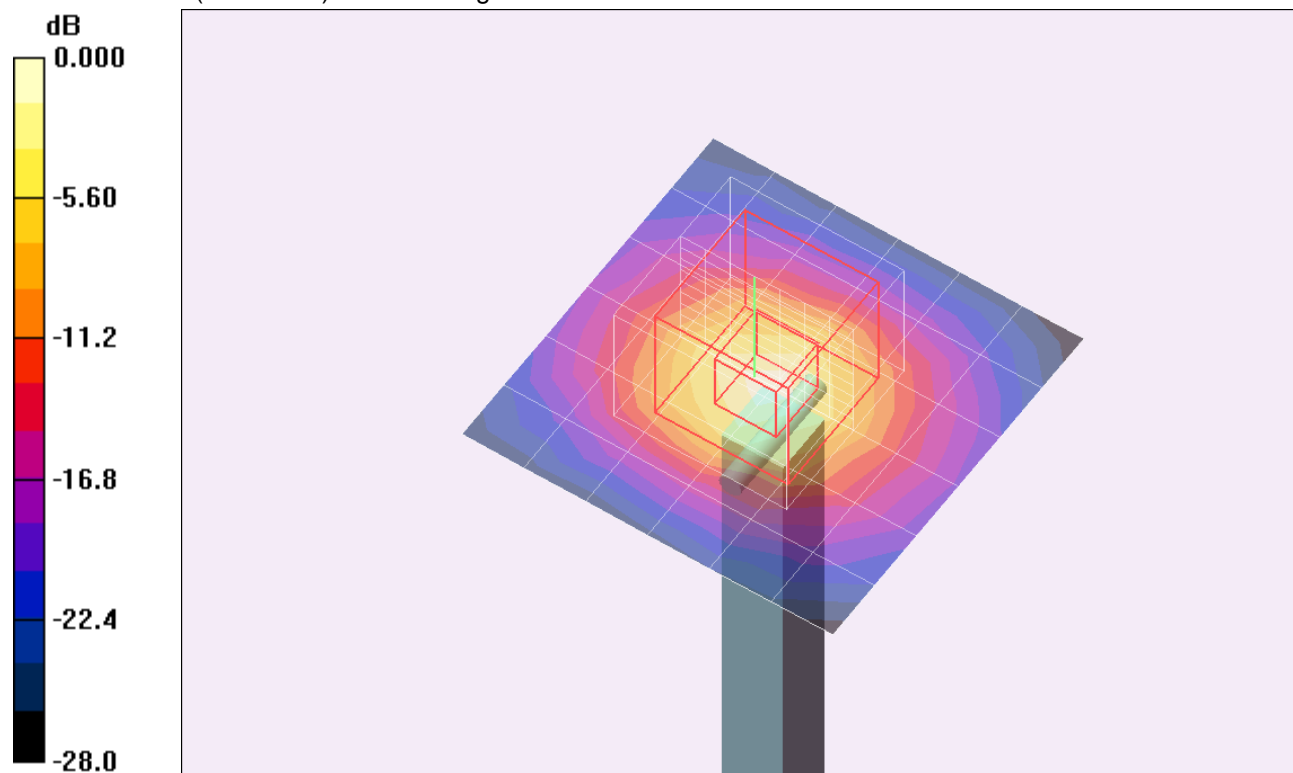
Body, 5500 MHz, Pin=100mW/Zoom Scan (8x8x10)/Cube 0: Measurement grid: dx=4mm, dy=4mm, dz=2.5mm

Reference Value = 56.4 V/m; Power Drift = 0.104 dB

Peak SAR (extrapolated) = 30.1 W/kg

SAR(1 g) = 8.34 mW/g; SAR(10 g) = 2.38 mW/g

Maximum value of SAR (measured) = 15.0 mW/g

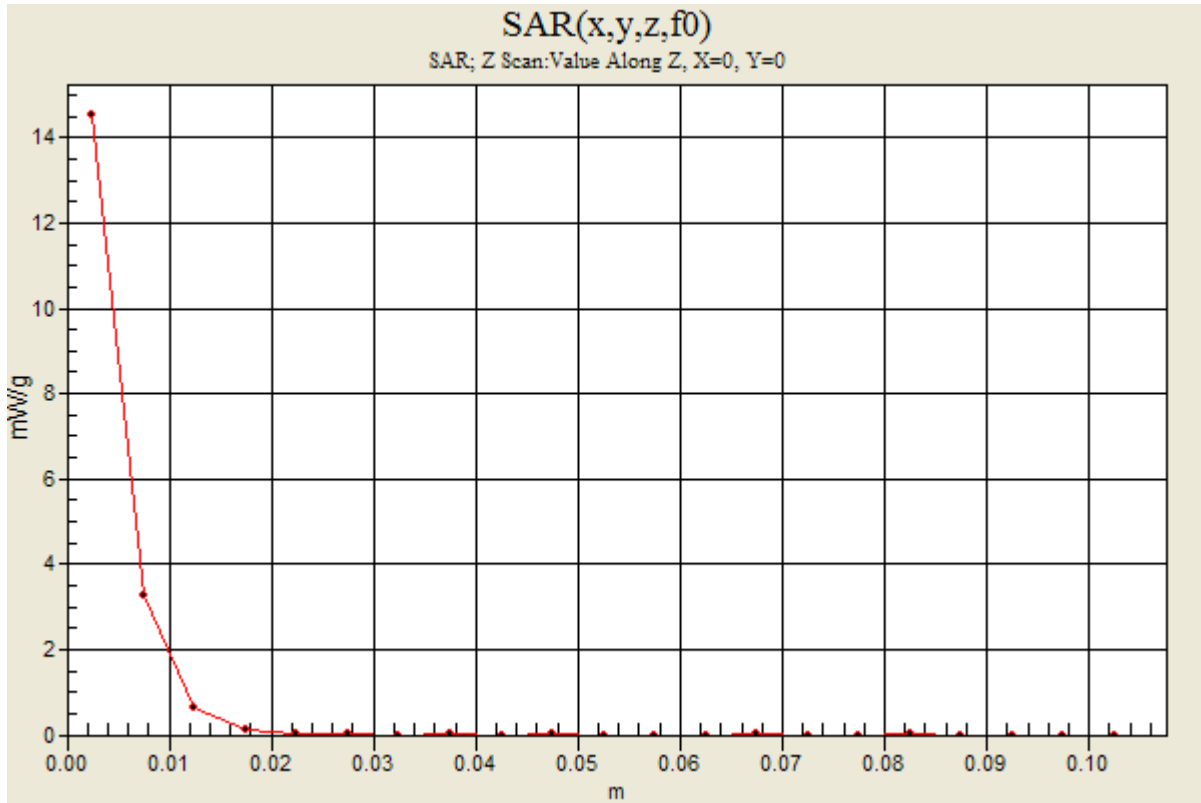


0 dB = 15.0mW/g

20120131_SystemPerformanceCheck-D5GHzV2 SN 1003

Frequency: 5500 MHz; Duty Cycle: 1:1

Body, 5500 MHz, Pin=100mW/Z Scan (1x1x21): Measurement grid: dx=20mm, dy=20mm, dz=5mm
Maximum value of SAR (measured) = 14.5 mW/g



20120206_SystemPerformanceCheck-D5GHzV2 SN 1003

Frequency: 5200 MHz; Duty Cycle: 1:1; Room Ambient Temperature: 25.0°C; Liquid Temperature: 24.0°C
Medium parameters used: $f = 5200$ MHz; $\sigma = 5.37$ mho/m; $\epsilon_r = 48.5$; $\rho = 1000$ kg/m³;

DASY4 Configuration:

- Electronics: DAE3 Sn427; Calibrated: 1/17/2012
- Probe: EX3DV4 - SN3749; ConvF(4.23, 4.23, 4.23); Calibrated: 1/27/2012
- Sensor-Surface: 2.5mm (Mechanical Surface Detection)
- Phantom: Flat Phantom ELI4.0; Type: QDOVA001BA; Serial: SN:1003

Body, 5200 MHz, Pin=100mW/Area Scan (7x7x1): Measurement grid: dx=10mm, dy=10mm

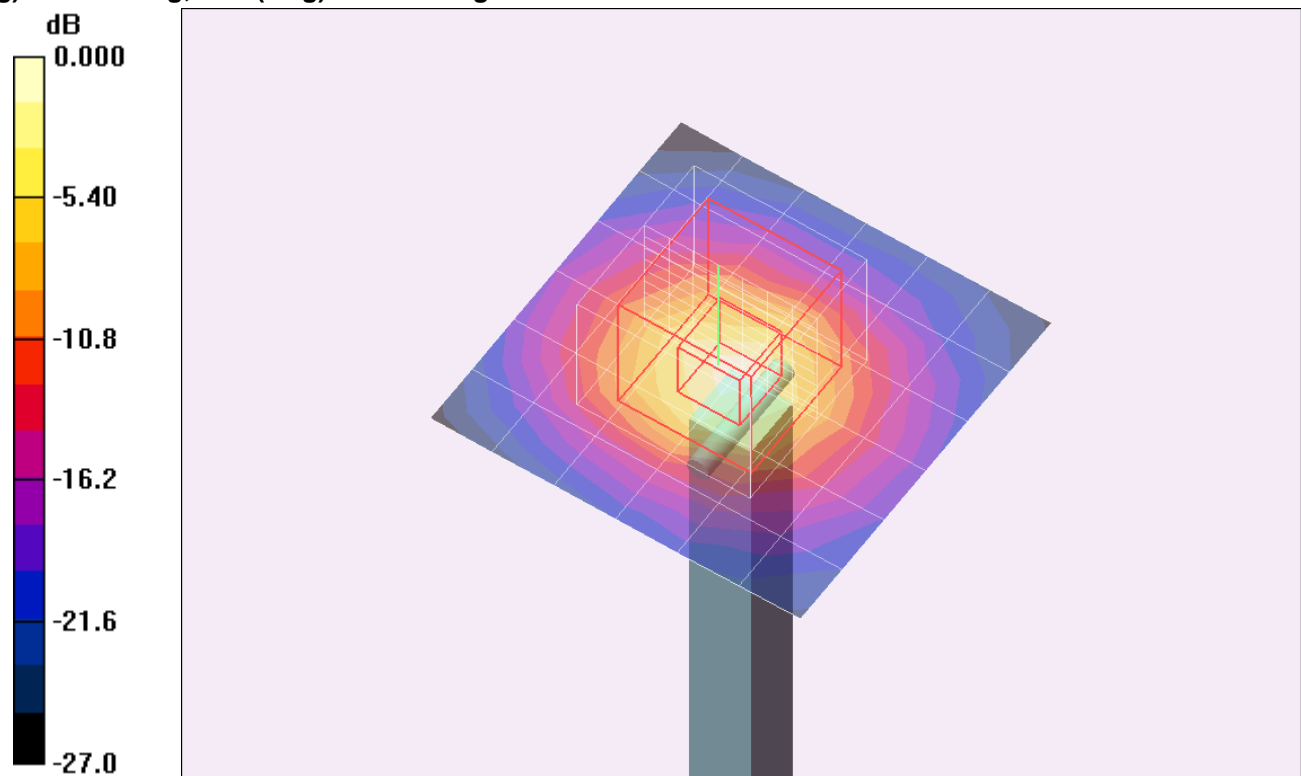
Maximum value of SAR (measured) = 12.9 mW/g

Body, 5200 MHz, Pin=100mW/Zoom Scan (8x8x10)/Cube 0: Measurement grid: dx=4mm, dy=4mm, dz=2.5mm

Reference Value = 53.5 V/m; Power Drift = -0.008 dB

Peak SAR (extrapolated) = 27.8 W/kg

SAR(1 g) = 7.38 mW/g; SAR(10 g) = 2.12 mW/g



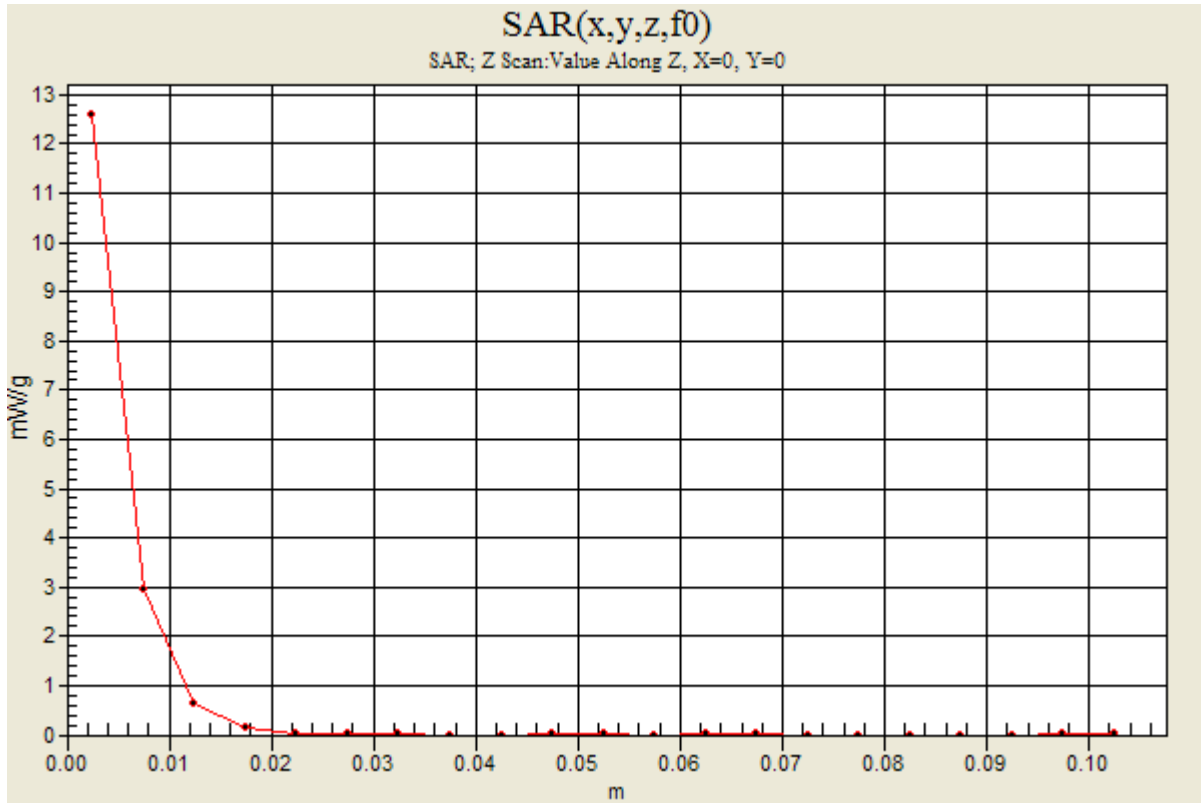
0 dB = 12.9mW/g

20120206_SystemPerformanceCheck-D5GHzV2 SN 1003

Frequency: 5200 MHz; Duty Cycle: 1:1

Body, 5200 MHz, Pin=100mW/Z Scan (1x1x21): Measurement grid: dx=20mm, dy=20mm, dz=5mm

Maximum value of SAR (measured) = 12.6 mW/g



20120211 SystemPerformanceCheck-D2450V2 SN 706

Frequency: 2450 MHz; Duty Cycle: 1:1; Room Ambient Temperature: 24.0°C; Liquid Temperature: 23.0°C
Medium parameters used: $f = 2450 \text{ MHz}$; $\sigma = 2 \text{ mho/m}$; $\epsilon_r = 52.6$; $\rho = 1000 \text{ kg/m}^3$;

DASY4 Configuration:

- Electronics: DAE3 Sn427; Calibrated: 1/17/2012
- Probe: EX3DV4 - SN3749; ConvF(6.66, 6.66, 6.66); Calibrated: 1/27/2012
- Sensor-Surface: 2.5mm (Mechanical Surface Detection)
- Phantom: Flat Phantom ELI4.0; Type: QDOVA001BA; Serial: SN:1003

Body, Pin=100mW/Area Scan (7x7x1): Measurement grid: dx=15mm, dy=15mm

Maximum value of SAR (measured) = 7.97 mW/g

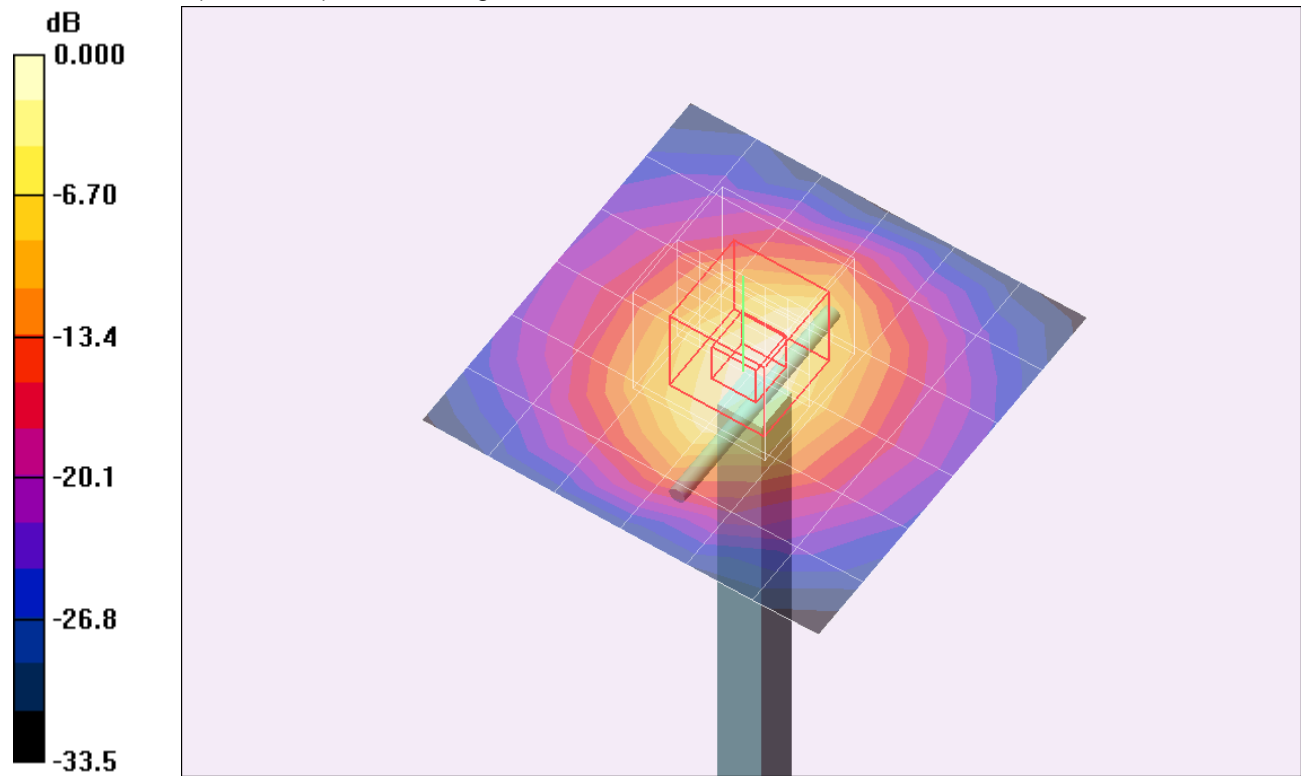
Body, Pin=100mW/Zoom Scan (7x7x7)/Cube 0: Measurement grid: dx=5mm, dy=5mm, dz=5mm

Reference Value = 63.5 V/m; Power Drift = -0.106 dB

Peak SAR (extrapolated) = 11.8 W/kg

SAR(1 g) = 5.61 mW/g; SAR(10 g) = 2.6 mW/g

Maximum value of SAR (measured) = 7.92 mW/g



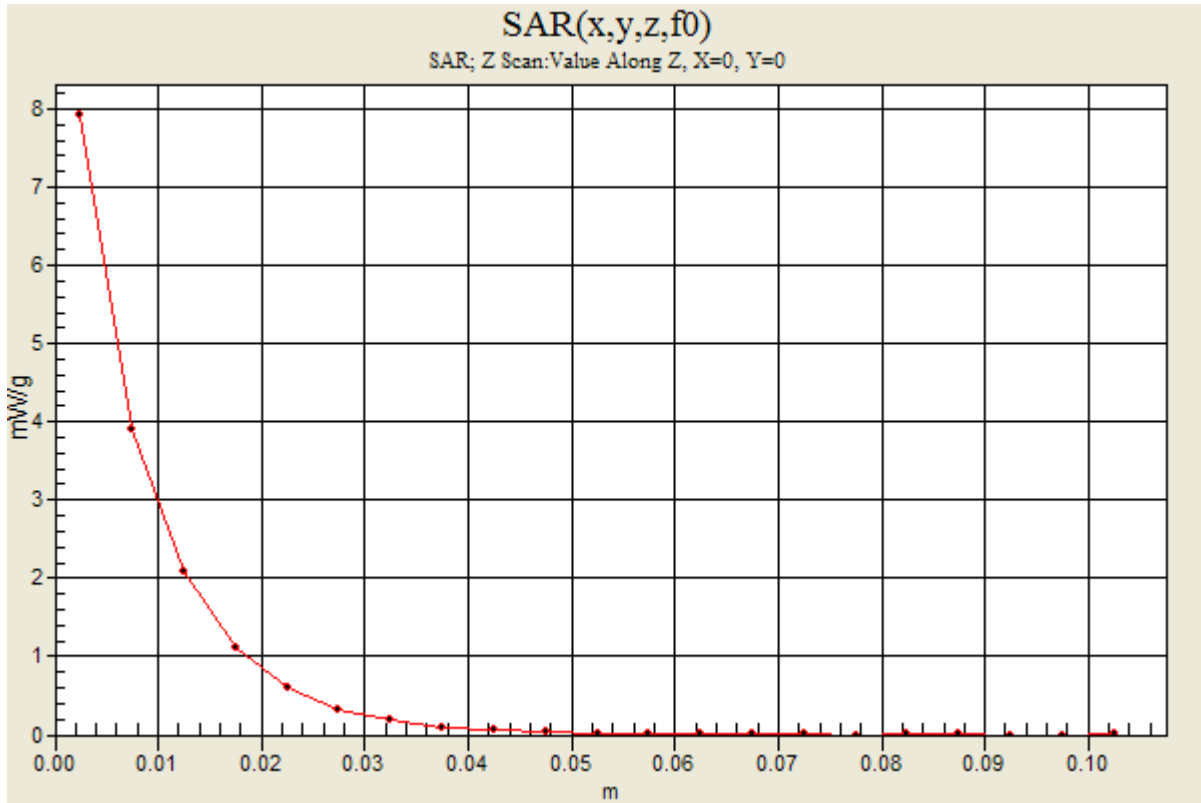
0 dB = 7.92mW/g

20120211 SystemPerformanceCheck-D2450V2 SN 706

Frequency: 2450 MHz; Duty Cycle: 1:1

Body, Pin=100mW/Z Scan (1x1x21): Measurement grid: dx=20mm, dy=20mm, dz=5mm

Maximum value of SAR (measured) = 7.92 mW/g



20120213 SystemPerformanceCheck-D2450V2 SN 706

Frequency: 2450 MHz; Duty Cycle: 1:1; Room Ambient Temperature: 24.0°C; Liquid Temperature: 23.0°C
 Medium parameters used: $f = 2450$ MHz; $\sigma = 2.02$ mho/m; $\epsilon_r = 52.8$; $\rho = 1000$ kg/m³;

DASY4 Configuration:

- Electronics: DAE3 Sn427; Calibrated: 1/17/2012
- Probe: EX3DV4 - SN3749; ConvF(6.66, 6.66, 6.66); Calibrated: 1/27/2012
- Sensor-Surface: 2.5mm (Mechanical Surface Detection)
- Phantom: Flat Phantom ELI4.0; Type: QDOVA001BA; Serial: SN:1003

Body, Pin=100mW/Area Scan (7x7x1): Measurement grid: dx=15mm, dy=15mm

Maximum value of SAR (measured) = 7.75 mW/g

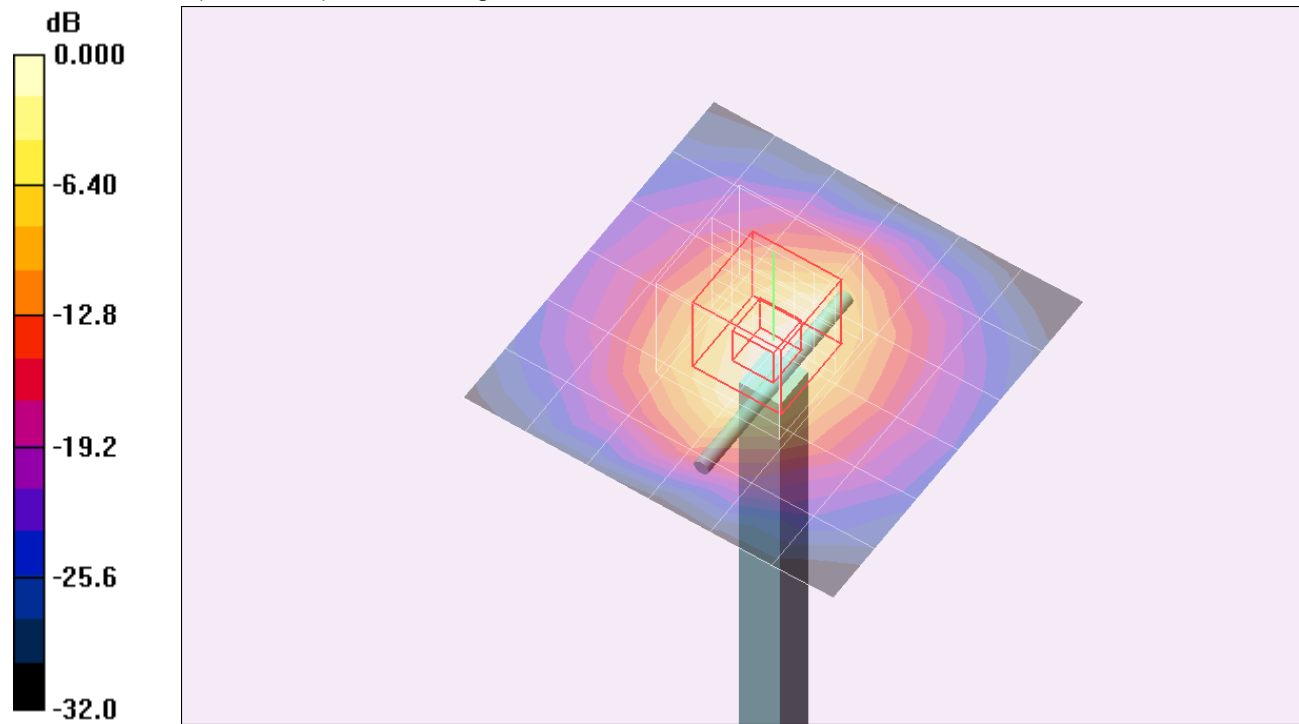
Body, Pin=100mW/Zoom Scan (7x7x7)/Cube 0: Measurement grid: dx=5mm, dy=5mm, dz=5mm

Reference Value = 62.0 V/m; Power Drift = 0.042 dB

Peak SAR (extrapolated) = 11.8 W/kg

SAR(1 g) = 5.46 mW/g; SAR(10 g) = 2.49 mW/g

Maximum value of SAR (measured) = 7.74 mW/g

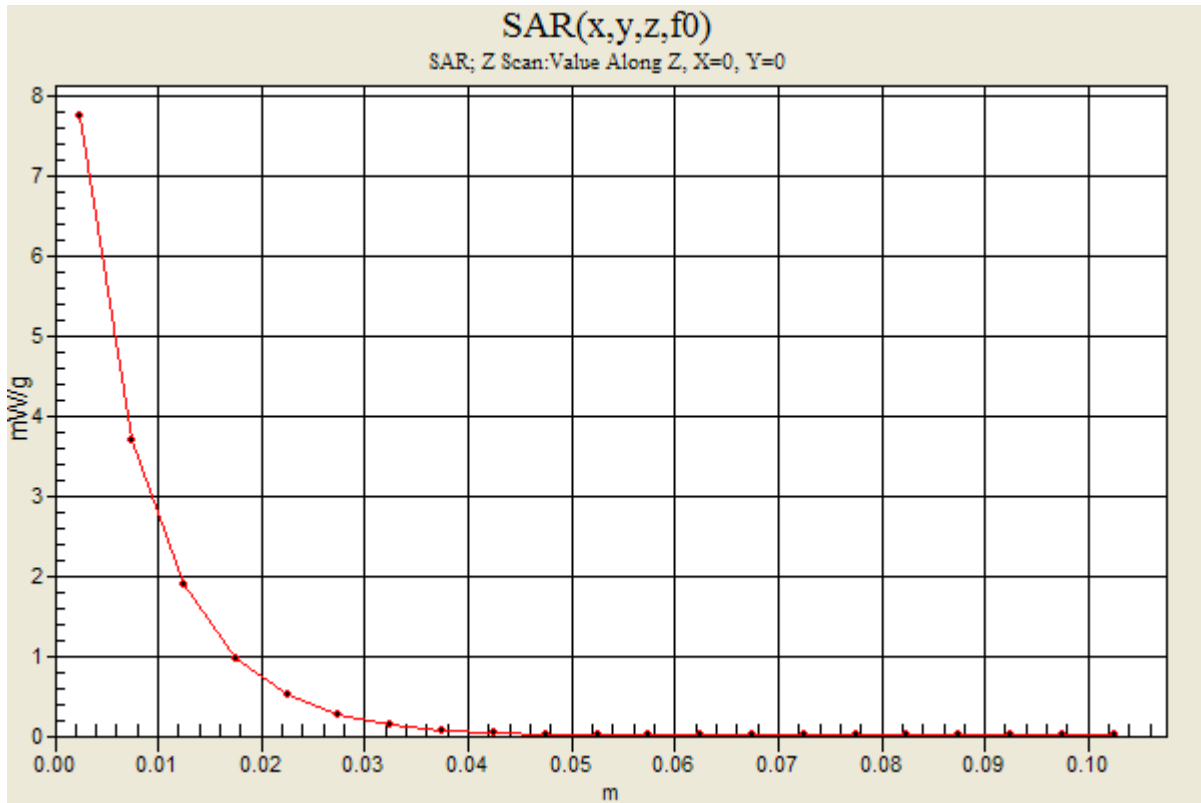


0 dB = 7.74mW/g

20120213 SystemPerformanceCheck-D2450V2 SN 706

Frequency: 2450 MHz; Duty Cycle: 1:1

Body, Pin=100mW/Z Scan (1x1x21): Measurement grid: dx=20mm, dy=20mm, dz=5mm
Maximum value of SAR (measured) = 7.76 mW/g



20120215_SystemPerformanceCheck-D5GHzV2 SN 1003

Frequency: 5500 MHz; Duty Cycle: 1:1; Room Ambient Temperature: 24.0°C; Liquid Temperature: 23.0°C
Medium parameters used: $f = 5500$ MHz; $\sigma = 5.8$ mho/m; $\epsilon_r = 50.8$; $\rho = 1000$ kg/m³;

DASY4 Configuration:

- Electronics: DAE3 Sn427; Calibrated: 1/17/2012
- Probe: EX3DV4 - SN3749; ConvF(3.72, 3.72, 3.72); Calibrated: 1/27/2012
- Sensor-Surface: 2.5mm (Mechanical Surface Detection)
- Phantom: Flat Phantom ELI4.0; Type: QDOVA001BA; Serial: SN:1003

Body, 5500 MHz, Pin=100mW/Area Scan (7x7x1): Measurement grid: dx=10mm, dy=10mm

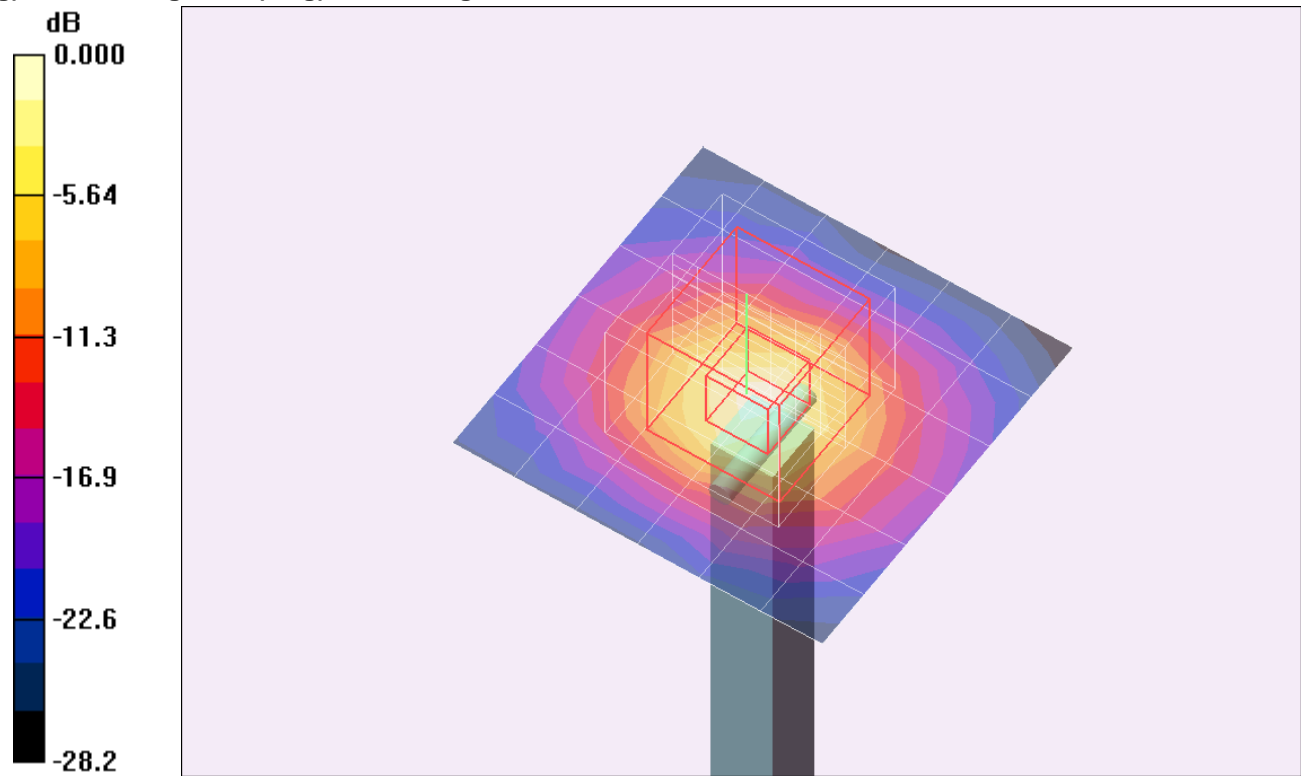
Maximum value of SAR (measured) = 14.0 mW/g

Body, 5500 MHz, Pin=100mW/Zoom Scan (8x8x10)/Cube 0: Measurement grid: dx=4mm, dy=4mm, dz=2.5mm

Reference Value = 53.1 V/m; Power Drift = -0.174 dB

Peak SAR (extrapolated) = 29.9 W/kg

SAR(1 g) = 7.81 mW/g; SAR(10 g) = 2.2 mW/g



0 dB = 14.0mW/g

20120215_SystemPerformanceCheck-D5GHzV2 SN 1003

Frequency: 5500 MHz; Duty Cycle: 1:1

Body, 5500 MHz, Pin=100mW/Z Scan (1x1x21): Measurement grid: dx=20mm, dy=20mm, dz=5mm

Maximum value of SAR (measured) = 14.1 mW/g

