



**FCC OET BULLETIN 65 SUPPLEMENT C
CLASS II PERMISSIVE CHANGE
IC RSS-102 ISSUE 3**

SAR EVALUATION REPORT

**FOR
802.11g / Draft 802.11n WLAN + BLUETOOTH PCI-E MINICARD
(Tested inside of HP Notebook PC, HSTNN-I71C)**

MODEL: BCM94313HMGB

FCC ID: QDS-BRCM1051

REPORT NUMBER: 10U13028-3, Revision A

ISSUE DATE: January 27, 2010

Prepared for

**BROADCOM CORPORATION
190 MATHILDA PLACE
SUNNYVALE, CA 94086**

Prepared by

**COMPLIANCE CERTIFICATION SERVICES
47173 BENICIA STREET
FREMONT, CA 94538, U.S.A.
TEL: (510) 771-1000
FAX: (510) 661-0888**



NVLAP LAB CODE 200065-0

Revision History

<u>Rev.</u>	<u>Issue Date</u>	<u>Revisions</u>	<u>Revised By</u>
--	January 25, 2010	Initial Issue	--
A	January 27, 2010	Removed IC ID from report.	Aliza Zaffar

TABLE OF CONTENTS

1. ATTESTATION OF TEST RESULTS.....	4
2. TEST METHODOLOGY	5
3. FACILITIES AND ACCREDITATION.....	5
4. CALIBRATION AND UNCERTAINTY.....	6
4.1. MEASURING INSTRUMENT CALIBRATION.....	6
4.2. MEASUREMENT UNCERTAINTY.....	7
5. EQUIPMENT UNDER TEST	8
6. SYSTEM SPECIFICATIONS.....	9
7. COMPOSITION OF INGREDIENTS FOR TISSUE SIMULATING LIQUIDS	10
8. LIQUID PARAMETERS CHECK.....	11
8.1. LIQUID CHECK RESULTS FOR 2450 MHZ.....	12
9. SYSTEM PERFORMANCE.....	13
9.1. SYSTEM CHECK RESULTS FOR D2450V2.....	13
10. OUTPUT POWER VERIFICATION.....	14
11. SUMMARY OF TEST RESULTS.....	15
12. SAR TEST PLOTS.....	16
13. ATTACHMENTS	18
14. TEST SETUP PHOTO	19
15. HOST DEVICE PHOTO	20

1. ATTESTATION OF TEST RESULTS

COMPANY NAME:	BROADCOM CORPORATION 190 MATHILDA PLACE SUNNYVALE, CA 94086
EUT DESCRIPTION:	802.11g / Draft 802.11n WLAN + BLUETOOTH PCI-E MINICARD (Tested inside of HP Notebook PC, HSTNN-I71C)
MODEL NUMBER:	BCM94313HMGB
DEVICE CATEGORY:	Portable
EXPOSURE CATEGORY:	General Population/Uncontrolled Exposure
DATE TESTED:	January 15, 2010

THE HIGHEST SAR VALUES:

FCC/IC Rule Parts	Frequency Range [MHz]	1g SAR (mW/g)	Limit (mW/g)
15.247 / RSS-102	2400 – 2483.5	0.00661	1.6

APPLICABLE STANDARDS:

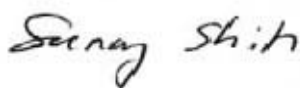
STANDARD	TEST RESULTS
FCC OET BULLETIN 65 SUPPLEMENT C and the following specific Test Procedures: <ul style="list-style-type: none"> o KDB 248227 SAR measurement procedures for 802.11a/b/g transmitters o KDB 447498 D01 Mobile Portable RF Exposure v04, supplemental to KDB 616217 D03 	Pass
RSS-102 ISSUE 3	Pass

Compliance Certification Services, Inc. (CCS) tested the above equipment in accordance with the requirements set forth in the above standards. All indications of Pass/Fail in this report are opinions expressed by CCS based on interpretations and/or observations of test results. Measurement Uncertainties were not taken into account and are published for informational purposes only. The test results show that the equipment tested is capable of demonstrating compliance with the requirements as documented in this report.

Note: The results documented in this report apply only to the tested sample, under the conditions and modes of operation as described herein. This document may not be altered or revised in any way unless done so by CCS and all revisions are duly noted in the revisions section. Any alteration of this document not carried out by CCS will constitute fraud and shall nullify the document. This report must not be used by the client to claim product certification, approval, or endorsement by NVLAP, NIST, any agency of the Federal Government, or any agency of any government.

Approved & Released For CCS By:

Tested By:




 SUNNY SHIH
 ENGINEERING SUPERVISOR
 COMPLIANCE CERTIFICATION SERVICES

 DEVIN CHANG
 EMC ENGINEER
 COMPLIANCE CERTIFICATION SERVICES

2. TEST METHODOLOGY

The tests documented in this report were performed in accordance with FCC OET Bulletin 65 Supplement C, Specific FCC Procedure KDB 248227 SAR Measurement Procedure for 802.11abg Transmitters, KDB 447498 D01 Mobile Portable RF Exposure v04, KDB 616217 D03 SAR Supp Note and Netbook Laptop v01 and IC RSS 102 Issue 3.

And Schedule 2 of Radiocommunications (Electromagnetic Radiation - Human Exposure) Standard 2003 incl Amendment No 1, 2007 and NZS 2772.1:1999 Radiofrequency fields - Maximum exposure levels - 3 kHz to 300 GHz incl Amendment No. 1, 1999.

3. FACILITIES AND ACCREDITATION

The test sites and measurement facilities used to collect data are located at 47173 Benicia Street, Fremont, California, USA.

CCS is accredited by NVLAP, Laboratory Code 200065-0. The full scope of accreditation can be viewed at <http://www.ccsemc.com>.

4. CALIBRATION AND UNCERTAINTY

4.1. MEASURING INSTRUMENT CALIBRATION

The measuring equipment utilized to perform the tests documented in this report has been calibrated in accordance with the manufacturer's recommendations, and is traceable to recognized national standards.

Name of Equipment	Manufacturer	Type/Model	Serial No.	Cal. Due date		
				MM	DD	Year
Robot - Six Axes	Stäubli	RX90BL	N/A	N/A		
Robot Remote Control	Stäubli	CS7MB	3403-91535	N/A		
DASY4 Measurement Server	SPEAG	SEUMS001BA	1041	N/A		
Probe Alignment Unit	SPEAG	LB (V2)	261	N/A		
SAM Phantom (SAM1)	SPEAG	QD000P40CA	1185	N/A		
SAM Phantom (SAM2)	SPEAG	QD000P40CA	1050	N/A		
Oval Flat Phantom (ELI 4.0)	SPEAG	QD OVA001 B	1003	N/A		
Electronic Probe kit	HP	85070C	N/A	N/A		
S-Parameter Network Analyzer	Agilent	8753ES-6	MY40001647	11	22	2010
Signal Generator	Agilent	8753ES-6	MY40001647	11	22	2010
E-Field Probe	SPEAG	EX3DV4	3686	3	23	1010
Data Acquisition Electronics	SPEAG	DAE3 V1	500	9	15	2010
System Validation Dipole	SPEAG	D900V2	108	1	21	2010
System Validation Dipole	SPEAG	D1800V2	294	1	29	2010
System Validation Dipole	SPEAG	D1900V2	5d043	1	29	2010
System Validation Dipole	SPEAG	D2450V2	748	4	14	2010
System Validation Dipole	SPEAG	D5GHzV2	1075	9	3	2011
ESG Vector Signal Generator	Agilent	E4438C	US44271090	9	17	2010
Amplifier	Mini-Circuits	ZVE-8G	90606	N/A		
Amplifier	Mini-Circuits	ZHL-42W	D072701-5	N/A		
Simulating Liquid	SPAEG	H2450	N/A	Within 24 hrs of first test		
Simulating Liquid	SPAEG	M2450	N/A	Within 24 hrs of first test		
Simulating Liquid	SPAEG	M5800	N/A	Within 24 hrs of first test		

4.2. MEASUREMENT UNCERTAINTY

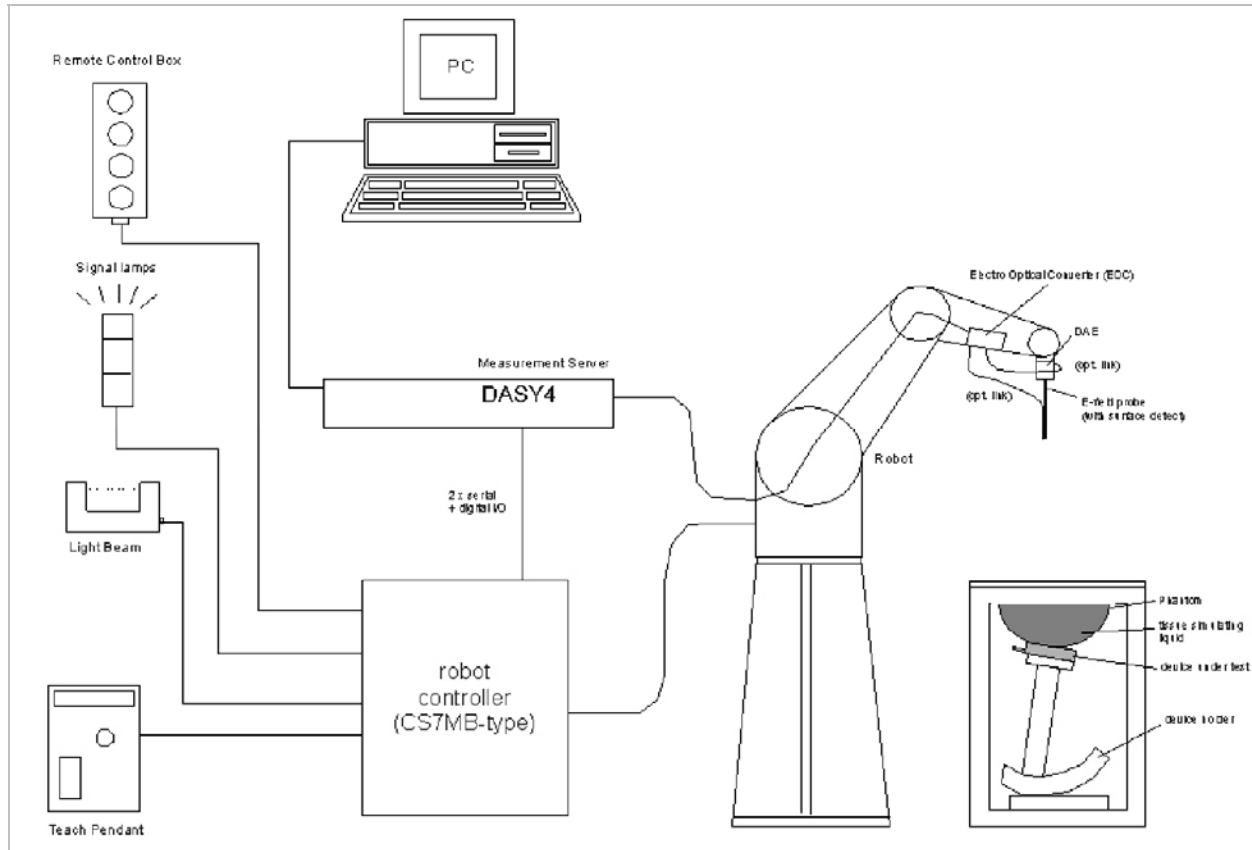
Measurement uncertainty for 300 MHz – 3000 MHz

Uncertainty component	Tol. (±%)	Probe Dist.	Div.	Ci (1g)	Ci (10g)	Std. Unc.(±%)		
						Ui (1g)	Ui(10g)	
Measurement System								
Probe Calibration	4.80	N	1	1	1	4.80	4.80	
Axial Isotropy	4.70	R	1.732	0.707	0.707	1.92	1.92	
Hemispherical Isotropy	9.60	R	1.732	0.707	0.707	3.92	3.92	
Boundary Effects	1.00	R	1.732	1	1	0.58	0.58	
Linearity	4.70	R	1.732	1	1	2.71	2.71	
System Detection Limits	1.00	R	1.732	1	1	0.58	0.58	
Readout Electronics	1.00	N	1	1	1	1.00	1.00	
Response Time	0.80	R	1.732	1	1	0.46	0.46	
Integration Time	2.60	R	1.732	1	1	1.50	1.50	
RF Ambient Conditions - Noise	1.59	R	1.732	1	1	0.92	0.92	
RF Ambient Conditions - Reflections	0.00	R	1.732	1	1	0.00	0.00	
Probe Positioner Mechanical Tolerance	0.40	R	1.732	1	1	0.23	0.23	
Probe Positioning With Respect to Phantom Shell	2.90	R	1.732	1	1	1.67	1.67	
algorithms for max. SAR evaluation	3.90	R	1.732	1	1	2.25	2.25	
Test sample Related								
Test Sample Positioning	1.10	N	1	1	1	1.10	1.10	
Device Holder Uncertainty	3.60	N	1	1	1	3.60	3.60	
Power and SAR Drift Measurement	5.00	R	1.732	1	1	2.89	2.89	
Phantom and Tissue Parameters								
Phantom Uncertainty	4.00	R	1.732	1	1	2.31	2.31	
Liquid Conductivity - Target	5.00	R	1.732	0.64	0.43	1.85	1.24	
Liquid Conductivity - Meas.	8.60	N	1	0.64	0.43	5.50	3.70	
Liquid Permittivity - Target	5.00	R	1.732	0.6	0.49	1.73	1.41	
Liquid Permittivity - Meas.	3.30	N	1	0.6	0.49	1.98	1.62	
Combined Standard Uncertainty						RSS	11.44	10.49
Expanded Uncertainty (95% Confidence Interval)						K=2	22.87	20.98
Notes for table								
1. Tol. - tolerance in influence quantity								
2. N - Normal								
3. R - Rectangular								
4. Div. - Divisor used to obtain standard uncertainty								
5. Ci - is the sensitivity coefficient								

5. EQUIPMENT UNDER TEST

802.11g / Draft 802.11n WLAN + BLUETOOTH PCI-E MINICARD (Tested inside of HP Notebook PC, HSTNN-I71C)							
Normal operation:	Laptop - Lap-held only						
Antenna tested:	<u>Install in</u> <table border="0"> <thead> <tr> <th><u>Host device</u></th> <th><u>Manufactured</u></th> <th><u>Model Number</u></th> </tr> </thead> <tbody> <tr> <td>HSTNN-I71C</td> <td>Yageo</td> <td>Tx1: 6036B0055102 Tx2 (or Rx2): 6036B0054802</td> </tr> </tbody> </table>	<u>Host device</u>	<u>Manufactured</u>	<u>Model Number</u>	HSTNN-I71C	Yageo	Tx1: 6036B0055102 Tx2 (or Rx2): 6036B0054802
<u>Host device</u>	<u>Manufactured</u>	<u>Model Number</u>					
HSTNN-I71C	Yageo	Tx1: 6036B0055102 Tx2 (or Rx2): 6036B0054802					
Antenna-to-user separation distances:	Tx1-to-user: 16.0 cm Tx2-to-user: 16.0 cm						
Antenna-to-antenna distance:	Refer to antenna specifications						
Require SAR evaluation for Simultaneous transmission?	WWAN co-located RF exposure assessment will be addressed in a separate FCC application filed under WWAN application.						
Power supply:	Power supplied through laptop computer (host device)						

6. SYSTEM SPECIFICATIONS



The DASY4 system for performing compliance tests consists of the following items:

- A standard high precision 6-axis robot (Stäubli RX family) with controller, teach pendant and software. An arm extension for accommodating the data acquisition electronics (DAE).
- A dosimetric probe, i.e., an isotropic E-field probe optimized and calibrated for usage in tissue simulating liquid. The probe is equipped with an optical surface detector system.
- A data acquisition electronics (DAE) which performs the signal amplification, signal multiplexing, AD-conversion, offset measurements, mechanical surface detection, collision detection, etc. The unit is battery powered with standard or rechargeable batteries. The signal is optically transmitted to the EOC.
- The function of the measurement server is to perform the time critical tasks such as signal filtering, control of the robot operation and fast movement interrupts.
- A probe alignment unit which improves the (absolute) accuracy of the probe positioning.
- A computer operating Windows 2000 or Windows XP.
- DASY4 software.
- Remote controls with teach pendant and additional circuitry for robot safety such as warning lamps, etc.
- The SAM twin phantom enabling testing left-hand and right-hand usage.
- The device holder for handheld mobile phones.
- Tissue simulating liquid mixed according to the given recipes.
- Validation dipole kits allowing to validate the proper functioning of the system.

7. COMPOSITION OF INGREDIENTS FOR TISSUE SIMULATING LIQUIDS

The following tissue formulations are provided for reference only as some of the parameters have not been thoroughly verified. The composition of ingredients may be modified accordingly to achieve the desired target tissue parameters required for routine SAR evaluation.

Ingredients (% by weight)	Frequency (MHz)									
	450		835		915		1900		2450	
Tissue Type	Head	Body	Head	Body	Head	Body	Head	Body	Head	Body
Water	38.56	51.16	41.45	52.4	41.05	56.0	54.9	40.4	62.7	73.2
Salt (NaCl)	3.95	1.49	1.45	1.4	1.35	0.76	0.18	0.5	0.5	0.04
Sugar	56.32	46.78	56.0	45.0	56.5	41.76	0.0	58.0	0.0	0.0
HEC	0.98	0.52	1.0	1.0	1.0	1.21	0.0	1.0	0.0	0.0
Bactericide	0.19	0.05	0.1	0.1	0.1	0.27	0.0	0.1	0.0	0.0
Triton X-100	0.0	0.0	0.0	0.0	0.0	0.0	0.0	0.0	36.8	0.0
DGBE	0.0	0.0	0.0	0.0	0.0	0.0	44.92	0.0	0.0	26.7
Dielectric Constant	43.42	58.0	42.54	56.1	42.0	56.8	39.9	54.0	39.8	52.5
Conductivity (S/m)	0.85	0.83	0.91	0.95	1.0	1.07	1.42	1.45	1.88	1.78

Salt: 99+% Pure Sodium Chloride

Sugar: 98+% Pure Sucrose

Water: De-ionized, 16 MΩ+ resistivity

HEC: Hydroxyethyl Cellulose

DGBE: 99+% Di(ethylene glycol) butyl ether, [2-(2-butoxyethoxy)ethanol]

Triton X-100 (ultra pure): Polyethylene glycol mono [4-(1,1, 3, 3-tetramethylbutyl)phenyl]ether

8. LIQUID PARAMETERS CHECK

The simulating liquids should be checked at the beginning of a series of SAR measurements to determine if the dielectric parameters are within the tolerances of the specified target values. The relative permittivity and conductivity of the tissue material should be within $\pm 5\%$ of the values given in the table below.

Reference Values of Tissue Dielectric Parameters for Head and Body Phantom (for 150 – 3000 MHz and 5800 MHz)

The head tissue dielectric parameters recommended by the IEEE SCC-34/SC-2 in IEEE Standard 1528 have been incorporated in the following table. These head parameters are derived from planar layer models simulating the highest expected SAR for the dielectric properties and tissue thickness variations in a human head. Other head and body tissue parameters that have not been specified in P1528 are derived from the tissue dielectric parameters computed from the 4-Cole-Cole equations and extrapolated according to the head parameters specified in IEEE Standard 1528.

Target Frequency (MHz)	Head		Body	
	ϵ_r	σ (S/m)	ϵ_r	σ (S/m)
150	52.3	0.76	61.9	0.8
300	45.3	0.87	58.2	0.92
450	43.5	0.87	56.7	0.94
835	41.5	0.9	55.2	0.97
900	41.5	0.97	55	1.05
915	41.5	0.98	55	1.06
1450	40.5	1.2	54	1.3
1610	40.3	1.29	53.8	1.4
1800 – 2000	40	1.4	53.3	1.52
2450	39.2	1.8	52.7	1.95
3000	38.5	2.4	52	2.73
5800	35.3	5.27	48.2	6

(ϵ_r = relative permittivity, σ = conductivity and $\rho = 1000 \text{ kg/m}^3$)

8.1. LIQUID CHECK RESULTS FOR 2450 MHZ

Simulating Liquid Dielectric Parameters for Body 2450 MHz

Room Ambient Temperature = 24°C; Relative humidity = 40%

Measured by: Devin Chang

f (MHz)	Liquid Parameters			Measured	Target	Delta (%)	Limit (%)
2450	e'	53.93	Relative Permittivity (ϵ_r):	53.932	52.7	2.34	± 5
	e''	13.94	Conductivity (σ):	1.900	1.95	-2.55	± 5

Liquid Check

Ambient temperature: 24 deg. C; Liquid temperature: 23 deg. C

January 15, 2010 02:54 PM

Frequency	e'	e''
2400000000.	55.1897	14.3423
2405000000.	55.2276	14.3133
2410000000.	55.2004	14.2844
2415000000.	55.1313	14.2278
2420000000.	55.0188	14.1545
2425000000.	54.8626	14.0818
2430000000.	54.6787	14.0122
2435000000.	54.4870	13.9628
2440000000.	54.2998	13.9365
2445000000.	54.1258	13.9252
2450000000.	53.9318	13.9422
2455000000.	53.7541	13.9851
2460000000.	53.6398	14.0449
2465000000.	53.5754	14.1004
2470000000.	53.5575	14.1722
2475000000.	53.5858	14.2602
2480000000.	53.6775	14.3532
2485000000.	53.8230	14.4642
2490000000.	53.9899	14.5864
2495000000.	54.1722	14.7037
2500000000.	54.3357	14.8032

The conductivity (σ) can be given as:

$$\sigma = \omega \epsilon_0 e'' = 2 \pi f \epsilon_0 e''$$

where $f = \text{target } f * 10^6$

$$\epsilon_0 = 8.854 * 10^{-12}$$

9. SYSTEM PERFORMANCE

The system performance check is performed prior to any usage of the system in order to guarantee reproducible results. The system performance check verifies that the system operates within its specifications of $\pm 10\%$.

System Performance Check Measurement Conditions

- The measurements were performed in the flat section of the SAM twin phantom filled with Body simulating liquid of the following parameters.
- The DASY4 system with an Isotropic E-Field Probe EX3DV4-SN: 3686 was used for the measurements.
- The dipole was mounted on the small tripod so that the dipole feed point was positioned below the center marking of the flat phantom section and the dipole was oriented parallel to the body axis (the long side of the phantom). The standard measuring distance was 10 mm (above 1 GHz) and 15 mm (below 1 GHz) from dipole center to the simulating liquid surface.
- The coarse grid with a grid spacing of 15 mm was aligned with the dipole.
For 5 GHz band - The coarse grid with a grid spacing of 10 mm was aligned with the dipole.
- Special 7x7x7 (2.4 GHz) fine cube was chosen for cube integration and Special 8x8x10 (5 GHz) fine cube was chosen for cube integration
- Distance between probe sensors and phantom surface was set to 3mm.
For 5 GHz band - Distance between probe sensors and phantom surface was set to 2.5mm
- The dipole input power (forward power) were 100 mW (5GHz) and 250 mW (2.4GHz) $\pm 3\%$
- The results are normalized to 1 W input power.

Reference SAR Values for HEAD & BODY-tissue from calibration certificate of SPEAG.

Certificate no: D2450V2-748 April 14, 2008

f (MHz)	Head Tissue		Body Tissue	
	SAR _{1g}	SAR _{10g}	SAR _{1g}	SAR _{10g}
2450			49.5	23.3

9.1. SYSTEM CHECK RESULTS FOR D2450V2

System Validation Dipole: D2450V2 SN: 748

Date: January 15, 2009

Ambient Temperature = 24°C; Relative humidity = 40%

Measured by: Sunny Shih

Medium	CW Signal (MHz)	Forward power	Measured (Normalized to 1 W)		Target	Delta (%)	Tolerance (%)
Body	2450	100	1g SAR:	52.8	49.5	6.67	± 10
			10g SAR:	24.4	23.3	4.72	

10. OUTPUT POWER VERIFICATION

The following procedures had been used to prepare the EUT for the SAR test.
The client provided a special driver and program, wl_tools, which enable a user to control the frequency and output power of the module.

RF Conducted Output Power Measurement Results:

Please refer to Broadcom's Operational Description document for Average Power information (confidential exhibit) as documented in 11/10/2009 original filing.

Before SAR evaluation, CCS has verified the RF conducted average power which is in a agreement with previous reported average output power.

11. SUMMARY OF TEST RESULTS

Laptop - Lap-held (with the display open at 90° to the keyboard)

Mode	Channel	f (MHz)	Antenna	Results (mW/g)	
				1g-SAR	10g-SAR
802.11b	6	2437	Main	0.00425	0.000711
802.11g	6	2437	Aux	0.00661	0.00222

Notes:

1. 802.11b doesn't operate for Aux antenna. Thus, 802.11g is performed for Aux antenna instead.
2. The modes with highest output power channel were chosen for the testing.

12. SAR TEST PLOTS

SAR PLOT FOR MAIN ANTENNA

Date/Time: 1/15/2010 5:09:36 PM

Test Laboratory: Compliance Certification Services

Laptop Mode

DUT: HP; Type: NA; Serial: NA

Communication System: 802.11bgn; Frequency: 2437 MHz; Duty Cycle: 1:1

Medium parameters used (interpolated): $f = 2437$ MHz; $\sigma = 1.89$ mho/m; $\epsilon_r = 54.4$; $\rho = 1000$ kg/m³

Phantom section: Flat Section

Room Ambient Temperature: 24.0 deg. C; Liquid Temperature: 23.0 deg. C

DASY4 Configuration:

- Area Scan setting - Find Secondary Maximum Within: 2.0 dB and with a peak SAR value greater than 0.0012W/kg
- Probe: EX3DV4 - SN3686; ConvF(6.48, 6.48, 6.48); Calibrated: 3/23/2009
- Sensor-Surface: 3mm (Mechanical Surface Detection)
- Electronics: DAE3 Sn500; Calibrated: 9/15/2009
- Phantom: Flat Phantom ELI4.0; Type: QDOVA001BA; Serial: SN:1003
- Measurement SW: DASY4, V4.7 Build 80; Postprocessing SW: SEMCAD, V1.8 Build 186

802.11b M-ch Main Ant/Area Scan (9x9x1): Measurement grid: dx=15mm, dy=15mm

Info: [Interpolated medium parameters used for SAR evaluation.](#)

Maximum value of SAR (measured) = 0.009 mW/g

802.11b M-ch Main Ant/Zoom Scan (7x7x9)/Cube 0: Measurement grid: dx=5mm, dy=5mm, dz=3mm

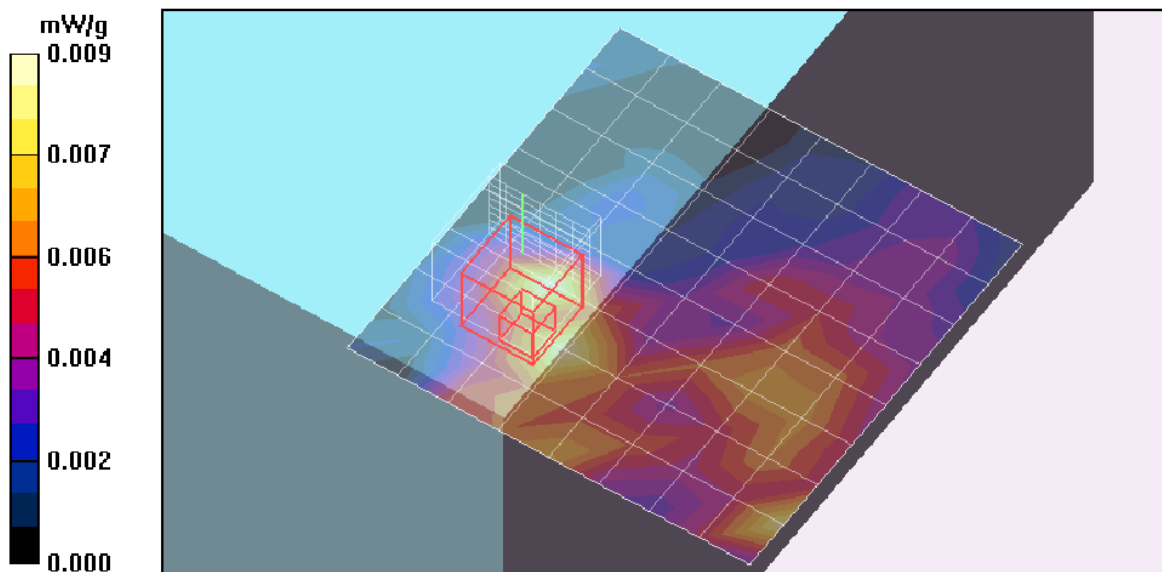
Reference Value = 2.52 V/m; Power Drift = -0.187 dB

Peak SAR (extrapolated) = 0.020 W/kg

SAR(1 g) = 0.00425 mW/g; SAR(10 g) = 0.000711 mW/g

Info: [Interpolated medium parameters used for SAR evaluation.](#)

Maximum value of SAR (measured) = 0.016 mW/g



SAR PLOT FOR AUX ANTENNA

Date/Time: 1/15/2010 10:04:04 PM

Test Laboratory: Compliance Certification Services

Laptop Mode

DUT: HP; Type: NA; Serial: NA

Communication System: 802.11bgn; Frequency: 2437 MHz; Duty Cycle: 1:1
Medium parameters used (interpolated): $f = 2437$ MHz; $\sigma = 1.89$ mho/m; $\epsilon_r = 54.4$; $\rho = 1000$ kg/m³
Phantom section: Flat Section

Room Ambient Temperature: 24.0 deg. C; Liquid Temperature: 23.0 deg. C

DASY4 Configuration:

- Area Scan setting - Find Secondary Maximum Within: 2.0 dB and with a peak SAR value greater than 0.0012W/kg
- Probe: EX3DV4 - SN3686; ConvF(6.48, 6.48, 6.48); Calibrated: 3/23/2009
- Sensor-Surface: 3mm (Mechanical Surface Detection)
- Electronics: DAE3 Sn500; Calibrated: 9/15/2009
- Phantom: Flat Phantom ELI4.0; Type: QDOVA001BA; Serial: SN:1003
- Measurement SW: DASY4, V4.7 Build 80; Postprocessing SW: SEMCAD, V1.8 Build 186

802.11g M-ch Aux Ant 2/Area Scan (11x11x1):

Measurement grid: dx=15mm, dy=15mm
[Info: Interpolated medium parameters used for SAR evaluation.](#)

Maximum value of SAR (measured) = 0.008 mW/g

802.11g M-ch Aux Ant 2/Zoom Scan (7x7x9)/Cube 0:

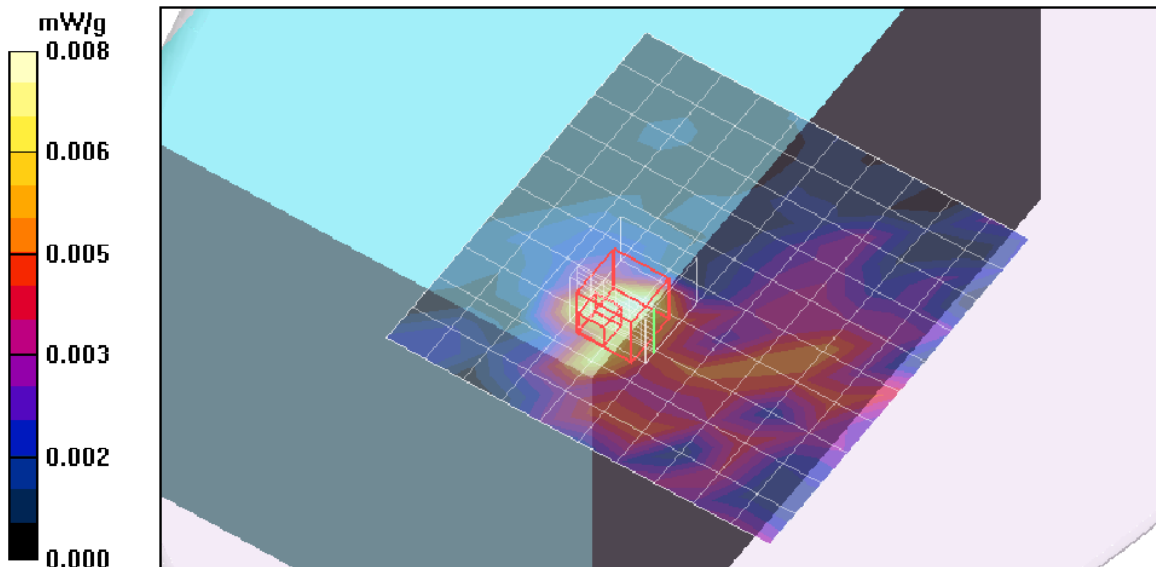
Reference Value = 0.754 V/m; Power Drift = 4.18 dB

Peak SAR (extrapolated) = 0.014 W/kg

SAR(1 g) = 0.00661 mW/g; SAR(10 g) = 0.00222 mW/g

[Info: Interpolated medium parameters used for SAR evaluation.](#)

Maximum value of SAR (measured) = 0.015 mW/g



13. ATTACHMENTS

<u>No.</u>	<u>Contents</u>	<u>No. of page (s)</u>
1	System Validation Plots	2
2	Certificate of E-Field Probe - EX3DV4 SN 3686	10
3	Certificate of System Validation Dipole D2450V2	6