

Test Laboratory: Compliance Certification Services Inc.

80211b Rate 1M Bottom Flat BCM94313HMGIPA Z585 FCC

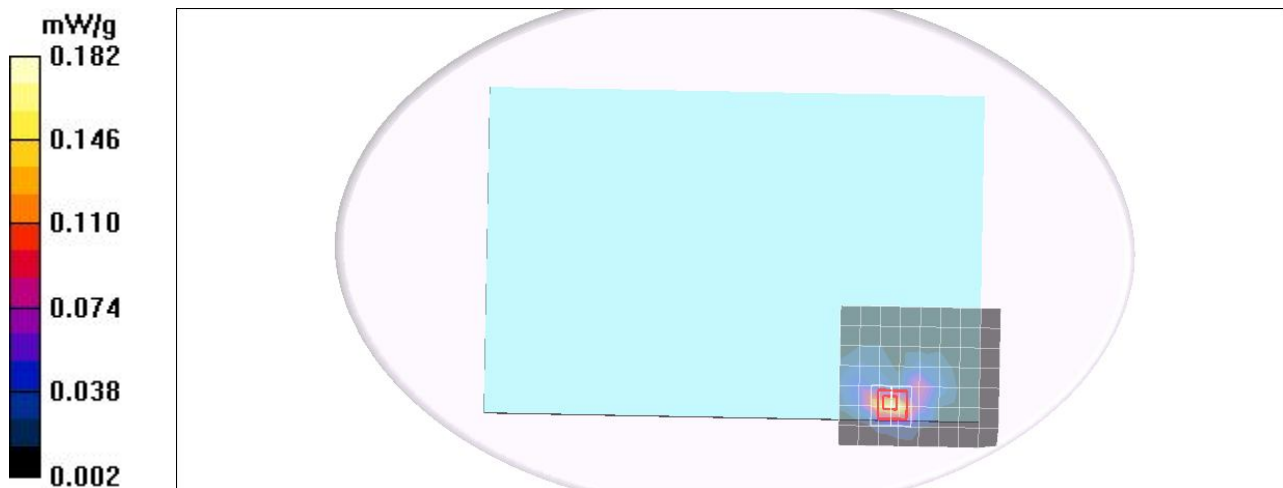
Communication System: IEEE 802.11b WLAN; Frequency: 2437 MHz; Duty Cycle: 1:1
Medium parameters used (interpolated): $f = 2437$ MHz; $\sigma = 1.97$ mho/m; $\epsilon_r = 51.4$; $\rho = 1000$ kg/m³
Phantom section: Flat Section
Air Temperature: 24.2 deg C; Liquid Temperature: 23.2 deg C
Area Scan Find Secondary Maximum Within 2dB and with a peak SAR value greater than 0.0012W/kg

DASY4 Configuration:

- Probe: EX3DV4 - SN3554; ConvF(6.18, 6.18, 6.18);
- Sensor-Surface: 2.5mm (Mechanical Surface Detection)
- Electronics: DAE4 Sn558; Calibrated: 2011/7/26
- Phantom: Flat Phantom EL14.0; Type: QDOVA001BA; Serial: SN: 1052
- Measurement SW: DASY4, V4.7 Build 80; Postprocessing SW: SEMCAD, V1.8 Build 186

Bottom Middle CH6/Area Scan (8x9x1): Measurement grid: dx=15mm, dy=15mm
Maximum value of SAR (measured) = 0.161 mW/g

Bottom Middle CH6/Zoom Scan (7x7x9)/Cube 0: Measurement grid: dx=5mm, dy=5mm, dz=3mm
Reference Value = 0.974 V/m; Power Drift = -0.058 dB
Peak SAR (extrapolated) = 0.277 W/kg
SAR(1 g) = **0.137 mW/g**; SAR(10 g) = **0.063 mW/g**
Maximum value of SAR (measured) = 0.182 mW/g



Test Laboratory: Compliance Certification Services Inc.

80211g Rate 6M Bottom Flat BCM94313HMGIPA Z585 FCC

Communication System: IEEE 802.11g WLAN; Frequency: 2437 MHz; Duty Cycle: 1:1
Medium parameters used (interpolated): $f = 2437$ MHz; $\sigma = 1.97$ mho/m; $\epsilon_r = 51.4$; $\rho = 1000$ kg/m³
Phantom section: Flat Section
Air Temperature: 24.2 deg C; Liquid Temperature: 23.2 deg C
Area Scan Find Secondary Maximum Within 2dB and with a peak SAR value greater than 0.0012W/kg

DASY4 Configuration:

- Probe: EX3DV4 - SN3554; ConvF(6.18, 6.18, 6.18);
- Sensor-Surface: 2.5mm (Mechanical Surface Detection) Sensor-Surface: 0mm (Fix Surface)
- Electronics: DAE4 Sn558; Calibrated: 2011/7/26
- Phantom: Flat Phantom EL14.0; Type: QDOVA001BA; Serial: SN: 1052
- Measurement SW: DASY4, V4.7 Build 80; Postprocessing SW: SEMCAD, V1.8 Build 186

Bottom Middle CH6/Area Scan (19x28x1):

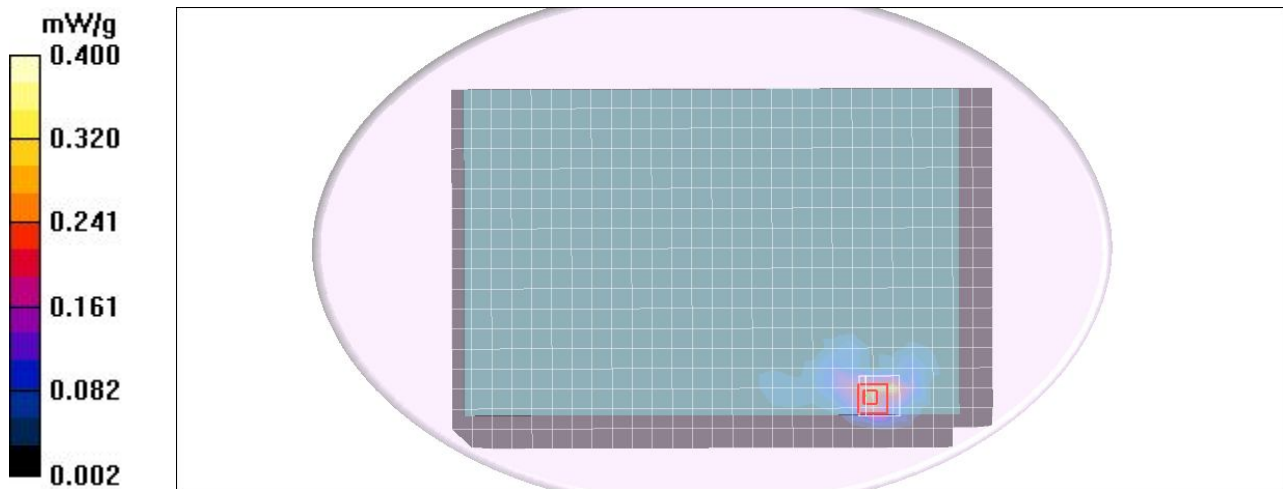
Measurement grid: dx=15mm, dy=15mm
Maximum value of SAR (measured) = 0.281 mW/g

Bottom Middle CH6/Zoom Scan (7x7x9)/Cube 0:

Measurement grid: dx=5mm, dy=5mm, dz=3mm
Reference Value = 0.351 V/m; Power Drift = -0.122 dB
Peak SAR (extrapolated) = 0.599 W/kg
SAR(1 g) = 0.289 mW/g; SAR(10 g) = 0.132 mW/g
Maximum value of SAR (measured) = 0.400 mW/g

Bottom Middle CH6/Z Scan (1x1x11):

Measurement grid: dx=20mm, dy=20mm, dz=10mm
Maximum value of SAR (measured) = 0.281 mW/g



SAR(x,y,z,f0)

SAR; Z Scan: Value Along Z, X=0, Y=0

