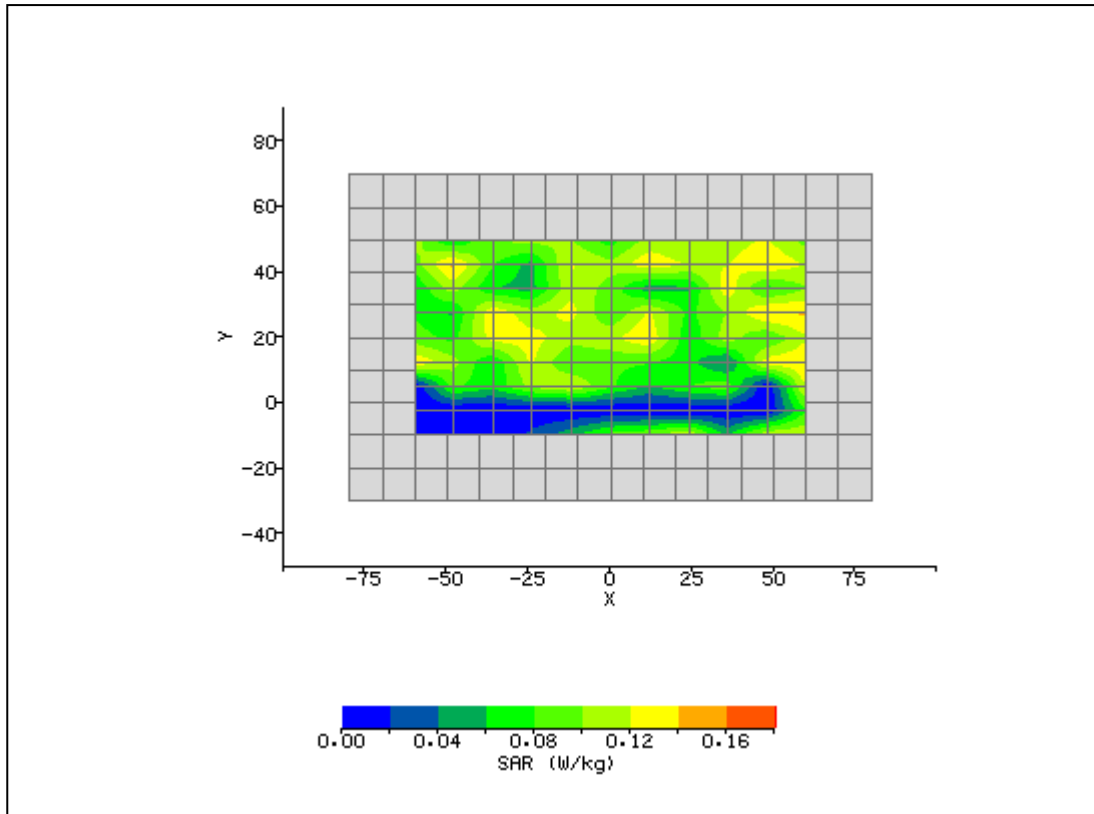


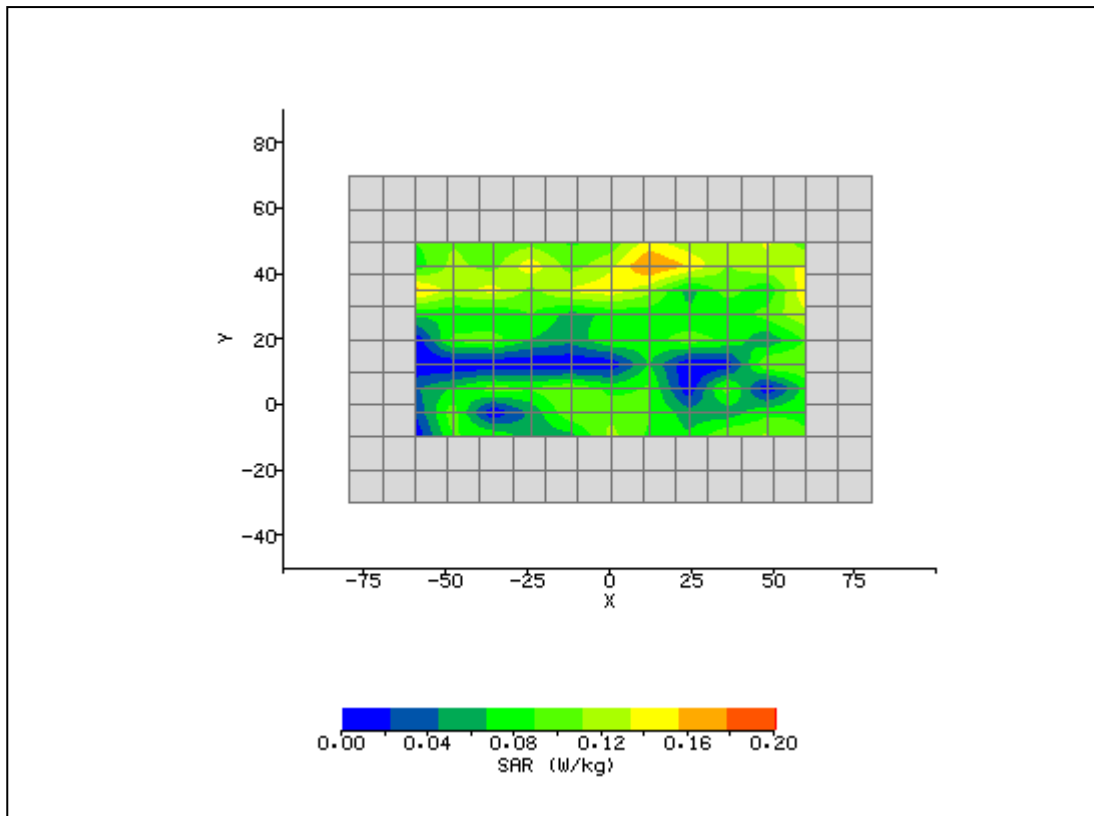
PLOT 1

System / software:	SARA2 / 2.54 VPM coloc	Input Power Drift:	
Date / Time:	6/9/2009 10:03:57 AM	DUT Battery Model/No:	
Filename:	2437_Main_Lap.txt	Probe Serial Number:	M0024
Ambient Temperature:	22.0°C	Liquid Simulant:	2450
Device Under Test:	Bixby	Relative Permittivity:	49.33
Relative Humidity:	45%	Conductivity:	1.958
Phantom S/No:	Head04_37.csv	Liquid Temperature:	22.0°C
Phantom Rotation:	0°	Max SAR X-axis Location:	60.00 mm
DUT Position:	Lap	Max SAR Y-axis Location:	11.75 mm
Antenna Configuration:	Main Integral	Max E Field:	9.42 V/m
Test Frequency:	2437MHz	SAR 1g:	0.195 W/kg
Air Factors:	2573 / 2262 / 2365	SAR 10g:	
Conversion Factors:	.487 / .487 / .487	SAR Start:	0.101 W/kg
Type of Modulation:		SAR End:	0.092 W/kg
Modn. Duty Cycle:		SAR Drift during Scan:	-8.70 %
Diode Compression Factors (V*200):	20 / 20 / 20	Probe battery last changed:	05/29/09
Input Power Level:	Set by software	Extrapolation:	poly4



PLOT 2

System / software:	SARA2 / 2.54 VPM coloc	Input Power Drift:	
Date / Time:	6/9/2009 10:21:48 AM	DUT Battery Model/No:	
Filename:	2437_Aux_Lap.txt	Probe Serial Number:	M0024
Ambient Temperature:	22.0°C	Liquid Simulant:	2450
Device Under Test:	Bixby	Relative Permittivity:	49.33
Relative Humidity:	45%	Conductivity:	1.958
Phantom S/No:	Head04_37.csv	Liquid Temperature:	22.0°C
Phantom Rotation:	0°	Max SAR X-axis Location:	12.00 mm
DUT Position:	Lap	Max SAR Y-axis Location:	42.50 mm
Antenna Configuration:	Aux Integral	Max E Field:	9.73 V/m
Test Frequency:	2437MHz	SAR 1g:	0.295 W/kg
Air Factors:	2573 / 2262 / 2365	SAR 10g:	
Conversion Factors:	.487 / .487 / .487	SAR Start:	0.117 W/kg
Type of Modulation:		SAR End:	0.099 W/kg
Modn. Duty Cycle:		SAR Drift during Scan:	-9.65 %
Diode Compression Factors (V*200):	20 / 20 / 20	Probe battery last changed:	05/29/09
Input Power Level:	Set by software	Extrapolation:	poly4



PLOT 3

System / software:	SARA2 / 2.54 VPM coloc	Input Power Drift:	
Date / Time:	6/9/2009 8:21:28 AM	DUT Battery Model/No:	
Filename:	DEFAULT.txt	Probe Serial Number:	M0024
Ambient Temperature:	22.0°C	Liquid Simulant:	2450
Device Under Test:	System	Relative Permittivity:	49.33
Relative Humidity:	45%	Conductivity:	1.958
Phantom S/No:	Head04_37.csv	Liquid Temperature:	22.0°C
Phantom Rotation:	0°	Max SAR X-axis Location:	-1.80 mm
DUT Position:	10 mm	Max SAR Y-axis Location:	4.20 mm
Antenna Configuration:	Dipole	Max E Field:	137.41 V/m
Test Frequency:	2450MHz	SAR 1g:	47.222 W/kg
Air Factors:	2573 / 2262 / 2365	SAR 10g:	
Conversion Factors:	.487 / .487 / .487	SAR Start:	4.304 W/kg
Type of Modulation:		SAR End:	4.367 W/kg
Modn. Duty Cycle:		SAR Drift during Scan:	1.45 %
Diode Compression Factors (V*200):	20 / 20 / 20	Probe battery last changed:	05/29/09
Input Power Level:	1W	Extrapolation:	poly4

