



**FCC OET BULLETIN 65 SUPPLEMENT C
IC RSS-102 ISSUE 2**

SAR EVALUATION REPORT

For

**802.11ag/Draft 802.11n WLAN PCI-E Minicard
(Tested inside of HP Notebook PC, HSTNN-I71C)**

MODEL: BCM943224HMS

FCC ID: QDS-BRCM1041

IC: 4324A-BRCM1041

REPORT NUMBER: 09U12582-1

ISSUE DATE: May 13, 2009

Prepared for

**BROADCOM CORPORATION
190 MATHILDA PLACE
SUNNYVALE, CA 94086**

Prepared by

**COMPLIANCE CERTIFICATION SERVICES
47173 BENICIA STREET
FREMONT, CA 94538, U.S.A.
TEL: (510) 771-1000
FAX: (510) 661-0888**



NVLAP LAB CODE 200065-0

Revision History

Rev.	Issue Date	Revisions	Revised By
--	May 13, 2009	Initial Issue	--

TABLE OF CONTENTS

1. ATTESTATION OF TEST RESULTS	4
2. TEST METHODOLOGY	5
3. FACILITIES AND ACCREDITATION	5
4. CALIBRATION AND UNCERTAINTY	6
4.1. <i>MEASURING INSTRUMENT CALIBRATION</i>	6
4.2. <i>MEASUREMENT UNCERTAINTY</i>	7
5. EQUIPMENT UNDER TEST	9
6. SYSTEM SPECIFICATIONS	10
7. COMPOSITION OF INGREDIENTS FOR TISSUE SIMULATING LIQUIDS	11
8. LIQUID PARAMETERS CHECK	12
8.1. <i>LIQUID CHECK RESULTS FOR 2450 MHZ</i>	13
8.2. <i>LIQUID CHECK RESULTS FOR 5 GHZ</i>	15
9. SYSTEM CHECK	16
9.1. <i>SYSTEM CHECK RESULTS FOR D2450V2</i>	17
9.2. <i>SYSTEM CHECK RESULTS FOR D5GHzV2</i>	17
10. OUTPUT POWER VERIFICATION	18
11. SUMMARY OF TEST RESULTS	19
11.1. <i>SAR TEST RESULT FOR THE 2.4 GHZ BAND</i>	19
11.2. <i>11.2. SAR TEST RESULT FOR THE 5 GHZ BANDS</i>	19
12. WORST-CASE SAR TEST PLOTS	20
13. TEST SETUP PHOTO	26
14. HOST DEVICE PHOTO	27

1. ATTESTATION OF TEST RESULTS

COMPANY NAME: BROADCOM CORPORATION
 190 MATHILDA PLACE
 SUNNYVALE, CA 94086

EUT DESCRIPTION: 802.11ag/Draft 802.11n WLAN PCI-E Minicard
 (Tested inside of HP Notebook PC, HSTNN-I71C)

MODEL NUMBER: BCM943224HMS

DEVICE CATEGORY: Portable

EXPOSURE CATEGORY: General Population/Uncontrolled Exposure

DATE TESTED: May 11 - 12 , 2009

THE HIGHEST SAR VALUES:

FCC / IC Rule Parts	Frequency Range [MHz]	The Highest SAR Values (1g_mW/g)	Limit (mW/g)
15.247 / RSS-102	2400 – 2483.5	0.041	1.6
	5725 – 5850	0.117	
15.407 / RSS-102	5150 – 5250	0.085	
	5250 – 5350	0.112	
	5470 – 5725	0.119	

APPLICABLE STANDARDS AND TEST PROCEDURES:

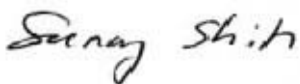
STANDARD	TEST RESULTS
FCC OET BULLETIN 65 SUPPLEMENT C	Pass
RSS-102 ISSUE 2	Pass

Compliance Certification Services, Inc. (CCS) tested the above equipment in accordance with the requirements set forth in the above standards. All indications of Pass/Fail in this report are opinions expressed by CCS based on interpretations and/or observations of test results. Measurement Uncertainties were not taken into account and are published for informational purposes only. The test results show that the equipment tested is capable of demonstrating compliance with the requirements as documented in this report.

Note: The results documented in this report apply only to the tested sample, under the conditions and modes of operation as described herein. This document may not be altered or revised in any way unless done so by CCS and all revisions are duly noted in the revisions section. Any alteration of this document not carried out by CCS will constitute fraud and shall nullify the document. This report must not be used by the client to claim product certification, approval, or endorsement by NVLAP, NIST, any agency of the Federal Government, or any agency of any government.

Approved & Released For CCS By:

Tested By:




SUNNY SHIH
 ENGINEERING SUPERVISOR
 COMPLIANCE CERTIFICATION SERVICES

CHAO YEN LIN
 EMC ENGINEER
 COMPLIANCE CERTIFICATION SERVICES

2. TEST METHODOLOGY

The tests documented in this report were performed in accordance with FCC OET Bulletin 65 Supplement C, Specific FCC Procedure KDB 248227 SAR Measurement Procedure for 820.11abg Transmitters and IC RSS 102 Issue 2.

3. FACILITIES AND ACCREDITATION

The test sites and measurement facilities used to collect data are located at 47173 Benicia Street, Fremont, California, USA.

CCS is accredited by NVLAP, Laboratory Code 200065-0. The full scope of accreditation can be viewed at <http://www.ccsemc.com>

4. CALIBRATION AND UNCERTAINTY

4.1. MEASURING INSTRUMENT CALIBRATION

The measuring equipment utilized to perform the tests documented in this report has been calibrated in accordance with the manufacturer's recommendations, and is traceable to recognized national standards.

Name of Equipment	Manufacturer	Type/Model	Serial No.	Cal. Due date		
				MM	DD	Year
Robot - Six Axes	Stäubli	RX90BL	N/A	N/A		
Robot Remote Control	Stäubli	CS7MB	3403-91535	N/A		
DASY4 Measurement Server	SPEAG	SEUMS001BA	1041	N/A		
Probe Alignment Unit	SPEAG	LB (V2)	261	N/A		
SAM Phantom (SAM1)	SPEAG	QD000P40CA	1185	N/A		
SAM Phantom (SAM2)	SPEAG	QD000P40CA	1050	N/A		
Oval Flat Phantom (ELI 4.0)	SPEAG	QD OVA001 B	1003	N/A		
Electronic Probe kit	HP	85070C	N/A	N/A		
S-Parameter Network Analyzer	Agilent	8753ES-6	MY40001647	11	14	2009
Signal Generator	Agilent	8753ES-6	MY40001647	11	14	2009
E-Field Probe	SPEAG	EX3DV4	3686	3	23	1010
Thermometer	ERTCO	639-1S	1718	5	28	2009
Data Acquisition Electronics	SPEAG	DAE3 V1	427	10	20	2009
System Validation Dipole	SPEAG	D835V2	4d002	6	22	2009
System Validation Dipole	SPEAG	D900V2	108	1	21	2010
System Validation Dipole	SPEAG	D1800V2	294	1	29	2010
System Validation Dipole	SPEAG	D1900V2	5d043	1	29	2010
System Validation Dipole	SPEAG	D2450V2	748	4	14	2010
System Validation Dipole	SPEAG	D5GHzV2	1003	11	21	2009
MXA Signal Analyzer	Agilent	N9020A	US48350984	10	23	2009
ESG Vector Signal Generator	Agilent	E4438C	US44271090	9	17	2010
Power Meter	Giga-tronics	8651A	8651404	1	11	2010
Power Sensor	Giga-tronics	80701A	1834588	1	11	2010
Amplifier	Mini-Circuits	ZVE-8G	90606	N/A		
Amplifier	Mini-Circuits	ZHL-42W	D072701-5	N/A		
Simulating Liquid	SPAEG	H2450	N/A	Within 24 hrs of first test		
Simulating Liquid	SPAEG	M2450	N/A	Within 24 hrs of first test		
Simulating Liquid	SPAEG	M5800	N/A	Within 24 hrs of first test		

4.2. MEASUREMENT UNCERTAINTY

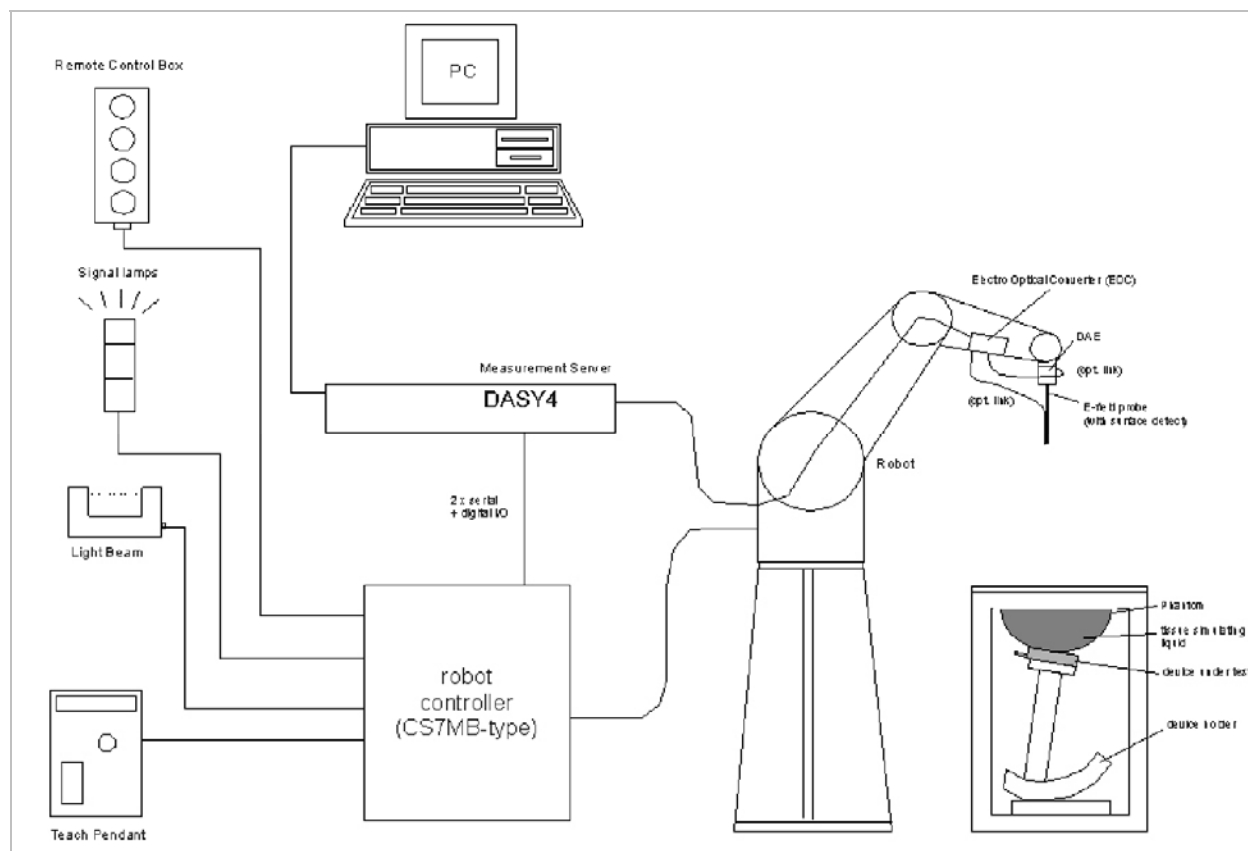
Measurement uncertainty for 300 MHz – 3000 MHz

Uncertainty component	Tol. (±%)	Probe Dist.	Div.	Ci (1g)	Ci (10g)	Std. Unc.(±%)	
						Ui (1g)	Ui(10g)
Measurement System							
Probe Calibration	4.80	N	1	1	1	4.80	4.80
Axial Isotropy	4.70	R	1.732	0.707	0.707	1.92	1.92
Hemispherical Isotropy	9.60	R	1.732	0.707	0.707	3.92	3.92
Boundary Effects	1.00	R	1.732	1	1	0.58	0.58
Linearity	4.70	R	1.732	1	1	2.71	2.71
System Detection Limits	1.00	R	1.732	1	1	0.58	0.58
Readout Electronics	1.00	N	1	1	1	1.00	1.00
Response Time	0.80	R	1.732	1	1	0.46	0.46
Integration Time	2.60	R	1.732	1	1	1.50	1.50
RF Ambient Conditions - Noise	1.59	R	1.732	1	1	0.92	0.92
RF Ambient Conditions - Reflections	0.00	R	1.732	1	1	0.00	0.00
Probe Positioner Mechanical Tolerance	0.40	R	1.732	1	1	0.23	0.23
Probe Positioning With Respect to Phantom Shell algorithms for max. SAR evaluation	2.90	R	1.732	1	1	1.67	1.67
	3.90	R	1.732	1	1	2.25	2.25
Test sample Related							
Test Sample Positioning	1.10	N	1	1	1	1.10	1.10
Device Holder Uncertainty	3.60	N	1	1	1	3.60	3.60
Power and SAR Drift Measurement	5.00	R	1.732	1	1	2.89	2.89
Phantom and Tissue Parameters							
Phantom Uncertainty	4.00	R	1.732	1	1	2.31	2.31
Liquid Conductivity - Target	5.00	R	1.732	0.64	0.43	1.85	1.24
Liquid Conductivity - Meas.	8.60	N	1	0.64	0.43	5.50	3.70
Liquid Permittivity - Target	5.00	R	1.732	0.6	0.49	1.73	1.41
Liquid Permittivity - Meas.	3.30	N	1	0.6	0.49	1.98	1.62
Combined Standard Uncertainty	RSS					11.44	10.49
Expanded Uncertainty (95% Confidence Interval)	K=2					22.87	20.98
Notes for table							
1. Tol. - tolerance in influence quantity							
2. N - Nomal							
3. R - Rectangular							
4. Div. - Divisor used to obtain standard uncertainty							
5. Ci - is te sensitivity coefficient							

Measurement uncertainty for 3 GHz – 6 GHz

Uncertainty component	Tol. (±%)	Probe Dist.	Div.	Ci (1g)	Ci (10g)	Std. Unc.(±%)	
						Ui (1g)	Ui(10g)
Measurement System							
Probe Calibration	4.80	N	1	1	1	4.80	4.80
Axial Isotropy	4.70	R	1.732	0.707	0.707	1.92	1.92
Hemispherical Isotropy	9.60	R	1.732	0.707	0.707	3.92	3.92
Boundary Effects	1.00	R	1.732	1	1	0.58	0.58
Linearity	4.70	R	1.732	1	1	2.71	2.71
System Detection Limits	1.00	R	1.732	1	1	0.58	0.58
Readout Electronics	1.00	N	1	1	1	1.00	1.00
Response Time	0.80	R	1.732	1	1	0.46	0.46
Integration Time	2.60	R	1.732	1	1	1.50	1.50
RF Ambient Conditions - Noise	3.00	R	1.732	1	1	1.73	1.73
RF Ambient Conditions - Reflections	3.00	R	1.732	1	1	1.73	1.73
Probe Positioner Mechanical Tolerance	0.40	R	1.732	1	1	0.23	0.23
Probe Positioning With Respect to Phantom Shell	2.90	R	1.732	1	1	1.67	1.67
Extrapolation, interpolation, and integration algorithms for max. SAR evaluation	3.90	R	1.732	1	1	2.25	2.25
Test sample Related							
Test Sample Positioning	1.10	N	1	1	1	1.10	1.10
Device Holder Uncertainty	3.60	N	1	1	1	3.60	3.60
Power and SAR Drift Measurement	5.00	R	1.732	1	1	2.89	2.89
Phantom and Tissue Parameters							
Phantom Uncertainty	4.00	R	1.732	1	1	2.31	2.31
Liquid Conductivity - Target	5.00	R	1.732	0.64	0.43	1.85	1.24
Liquid Conductivity - Meas.	8.60	N	1	0.64	0.43	5.50	3.70
Liquid Permittivity - Target	5.00	R	1.732	0.6	0.49	1.73	1.41
Liquid Permittivity - Meas.	3.30	N	1	0.6	0.49	1.98	1.62
Combined Standard Uncertainty			RSS			11.66	10.73
Expanded Uncertainty (95% Confidence Interval)			K=2			23.32	21.46
Notes for table							
1. Tol. - tolerance in influence quantity							
2. N - Nomal							
3. R - Rectangular							
4. Div. - Divisor used to obtain standard uncertainty							
5. Ci - is te sensitivity coefficient							

6. SYSTEM SPECIFICATIONS



The DASY4 system for performing compliance tests consists of the following items:

- A standard high precision 6-axis robot (Stäubli RX family) with controller, teach pendant and software. An arm extension for accommodating the data acquisition electronics (DAE).
- A dosimetric probe, i.e., an isotropic E-field probe optimized and calibrated for usage in tissue simulating liquid. The probe is equipped with an optical surface detector system.
- A data acquisition electronics (DAE) which performs the signal amplification, signal multiplexing, AD-conversion, offset measurements, mechanical surface detection, collision detection, etc. The unit is battery powered with standard or rechargeable batteries. The signal is optically transmitted to the EOC.
- The function of the measurement server is to perform the time critical tasks such as signal filtering, control of the robot operation and fast movement interrupts.
- A probe alignment unit which improves the (absolute) accuracy of the probe positioning.
- A computer operating Windows 2000 or Windows XP.
- DASY4 software.
- Remote controls with teach pendant and additional circuitry for robot safety such as warning lamps, etc.
- The SAM twin phantom enabling testing left-hand and right-hand usage.
- The device holder for handheld mobile phones.
- Tissue simulating liquid mixed according to the given recipes.
- Validation dipole kits allowing to validate the proper functioning of the system.

7. COMPOSITION OF INGREDIENTS FOR TISSUE SIMULATING LIQUIDS

The following tissue formulations are provided for reference only as some of the parameters have not been thoroughly verified. The composition of ingredients may be modified accordingly to achieve the desired target tissue parameters required for routine SAR evaluation.

Ingredients (% by weight)	Frequency (MHz)									
	450		835		915		1900		2450	
Tissue Type	Head	Body	Head	Body	Head	Body	Head	Body	Head	Body
Water	38.56	51.16	41.45	52.4	41.05	56.0	54.9	40.4	62.7	73.2
Salt (NaCl)	3.95	1.49	1.45	1.4	1.35	0.76	0.18	0.5	0.5	0.04
Sugar	56.32	46.78	56.0	45.0	56.5	41.76	0.0	58.0	0.0	0.0
HEC	0.98	0.52	1.0	1.0	1.0	1.21	0.0	1.0	0.0	0.0
Bactericide	0.19	0.05	0.1	0.1	0.1	0.27	0.0	0.1	0.0	0.0
Triton X-100	0.0	0.0	0.0	0.0	0.0	0.0	0.0	0.0	36.8	0.0
DGBE	0.0	0.0	0.0	0.0	0.0	0.0	44.92	0.0	0.0	26.7
Dielectric Constant	43.42	58.0	42.54	56.1	42.0	56.8	39.9	54.0	39.8	52.5
Conductivity (S/m)	0.85	0.83	0.91	0.95	1.0	1.07	1.42	1.45	1.88	1.78

Salt: 99+% Pure Sodium Chloride

Sugar: 98+% Pure Sucrose

Water: De-ionized, 16 MΩ+ resistivity

HEC: Hydroxyethyl Cellulose

DGBE: 99+% Di(ethylene glycol) butyl ether, [2-(2-butoxyethoxy)ethanol]

Triton X-100 (ultra pure): Polyethylene glycol mono [4-(1,1, 3, 3-tetramethylbutyl)phenyl]ether

8. LIQUID PARAMETERS CHECK

The simulating liquids should be checked at the beginning of a series of SAR measurements to determine if the dielectric parameters are within the tolerances of the specified target values. The relative permittivity and conductivity of the tissue material should be within $\pm 5\%$ of the values given in the table below.

Reference Values of Tissue Dielectric Parameters for Head and Body Phantom (for 150 – 3000 MHz and 5800 MHz)

The head tissue dielectric parameters recommended by the IEEE SCC-34/SC-2 in IEEE Standard 1528 have been incorporated in the following table. These head parameters are derived from planar layer models simulating the highest expected SAR for the dielectric properties and tissue thickness variations in a human head. Other head and body tissue parameters that have not been specified in P1528 are derived from the tissue dielectric parameters computed from the 4-Cole-Cole equations and extrapolated according to the head parameters specified in IEEE Standard 1528.

Target Frequency (MHz)	Head		Body	
	ϵ_r	σ (S/m)	ϵ_r	σ (S/m)
150	52.3	0.76	61.9	0.8
300	45.3	0.87	58.2	0.92
450	43.5	0.87	56.7	0.94
835	41.5	0.9	55.2	0.97
900	41.5	0.97	55	1.05
915	41.5	0.98	55	1.06
1450	40.5	1.2	54	1.3
1610	40.3	1.29	53.8	1.4
1800 – 2000	40	1.4	53.3	1.52
2450	39.2	1.8	52.7	1.95
3000	38.5	2.4	52	2.73
5800	35.3	5.27	48.2	6

(ϵ_r = relative permittivity, σ = conductivity and $\rho = 1000 \text{ kg/m}^3$)

8.1. LIQUID CHECK RESULTS FOR 2450 MHZ

Simulating Liquid Dielectric Parameters for Head 2450 MHz

Room Ambient Temperature = 24°C; Relative humidity = 40%

Measured by: Sunny Shih

f (MHz)	Liquid Parameters			Measured	Target	Delta (%)	Limit (%)
2450	e'	39.4	Relative Permittivity (ϵ_r):	39.404	39.2	0.52	± 5
	e"	13.7	Conductivity (σ):	1.870	1.80	3.89	± 5

Liquid Temperature: 23 deg. C

May 11, 2009 10:09 AM

Frequency	e'	e"
2400000000.	39.5323	13.4791
2405000000.	39.5224	13.5569
2410000000.	39.5027	13.6092
2415000000.	39.4892	13.6618
2420000000.	39.4734	13.6912
2425000000.	39.4687	13.7168
2430000000.	39.4659	13.7210
2435000000.	39.4638	13.7192
2440000000.	39.4548	13.7288
2445000000.	39.4326	13.7328
2450000000.	39.4044	13.7196
2455000000.	39.3479	13.7224
2460000000.	39.3262	13.6870
2465000000.	39.2583	13.6467
2470000000.	39.2247	13.5940
2475000000.	39.1941	13.5837
2480000000.	39.1801	13.5537
2485000000.	39.1855	13.5460
2490000000.	39.1893	13.5846
2495000000.	39.1737	13.6455
2500000000.	39.1692	13.7220

The conductivity (σ) can be given as:

$$\sigma = \omega \epsilon_0 e'' = 2 \pi f \epsilon_0 e''$$

where $f = \text{target } f * 10^6$

$$\epsilon_0 = 8.854 * 10^{-12}$$

Simulating Liquid Dielectric Parameters for Muscle 2450 MHz

Room Ambient Temperature = 24°C; Relative humidity = 40%

Measured by: Chaoyen Lin

f (MHz)	Liquid Parameters			Measured	Target	Delta (%)	Limit (%)
2450	e'	53.03	Relative Permittivity (ϵ_r):	53.034	52.7	0.63	± 5
	e''	14.14	Conductivity (σ):	1.928	1.95	-1.15	± 5

Liquid Temperature: 23 deg. C

May 11, 2009 10:16 AM

Frequency	e'	e''
2400000000.	53.1304	13.8960
2405000000.	53.1183	13.9694
2410000000.	53.1037	14.0346
2415000000.	53.1001	14.0781
2420000000.	53.0862	14.1043
2425000000.	53.0816	14.1225
2430000000.	53.0873	14.1158
2435000000.	53.0715	14.1219
2440000000.	53.0671	14.1364
2445000000.	53.0381	14.1641
2450000000.	53.0342	14.1432
2455000000.	52.9652	14.1198
2460000000.	52.9291	14.0917
2465000000.	52.8653	14.0545
2470000000.	52.8499	14.0069
2475000000.	52.8348	13.9827
2480000000.	52.8426	13.9898
2485000000.	52.8358	14.0089
2490000000.	52.8382	14.0662
2495000000.	52.8401	14.1400
2500000000.	52.8352	14.2429

The conductivity (σ) can be given as:

$$\sigma = \omega \epsilon_0 e'' = 2 \pi f \epsilon_0 e''$$

where $f = \text{target } f * 10^6$

$$\epsilon_0 = 8.854 * 10^{-12}$$

8.2. LIQUID CHECK RESULTS FOR 5 GHZ

Simulating Liquid Dielectric Parameters for Muscle 5800 MHz

Room Ambient Temperature = 25°C; Relative humidity = 38%

Measured by: Chaoyen Lin

f (MHz)	Muscle Liquid Parameters			Measured	Target	Delta (%)	Limit (%)
5200	e'	45.8893	Relative Permittivity (ϵ_r):	45.8893	49.0	-6.35	± 10
	e"	18.4602	Conductivity (σ):	5.34022	5.30	0.76	± 5
5500	e'	45.6926	Relative Permittivity (ϵ_r):	45.6926	48.6	-5.98	± 10
	e"	18.8738	Conductivity (σ):	5.77485	5.65	2.21	± 5
5800	e'	44.5928	Relative Permittivity (ϵ_r):	44.5928	48.2	-7.48	± 10
	e"	19.2844	Conductivity (σ):	6.22233	6.00	3.71	± 5

Liquid temperature: 24 deg. C

May 12, 2009 09:43 AM

Frequency	e'	e"
4600000000.	47.2310	17.6137
4650000000.	47.2697	17.8318
4700000000.	47.1162	17.7114
4750000000.	46.8963	17.9683
4800000000.	47.0811	17.9399
4850000000.	46.6659	17.9477
4900000000.	46.7974	18.2910
4950000000.	46.4271	18.0454
5000000000.	46.3083	18.4123
5050000000.	46.2967	18.3299
5100000000.	45.8769	18.4157
5150000000.	46.0712	18.4616
5200000000.	45.8893	18.4602
5250000000.	46.0533	18.7036
5300000000.	45.9073	18.6943
5350000000.	45.8069	18.9177
5400000000.	45.8724	18.8114
5450000000.	45.5483	18.9558
5500000000.	45.6926	18.8738
5550000000.	45.3434	18.9339
5600000000.	45.3549	19.0378
5650000000.	45.1224	19.0156
5700000000.	45.0795	19.2140
5750000000.	45.0874	19.1800
5800000000.	44.5928	19.2844
5850000000.	44.8467	19.4604
5900000000.	44.6123	19.2499
5950000000.	44.2967	19.4786
6000000000.	44.7008	19.7226

The conductivity (σ) can be given as:

$$\sigma = \omega \epsilon_0 e'' = 2 \pi f \epsilon_0 e''$$

where $f = \text{target } f * 10^6$

$$\epsilon_0 = 8.854 * 10^{-12}$$

9. SYSTEM CHECK

The system performance check is performed prior to any usage of the system in order to guarantee reproducible results. The system performance check verifies that the system operates within its specifications of $\pm 10\%$.

System Performance Check Measurement Conditions

- The measurements were performed in the flat section of the SAM twin phantom filled with Head or Body simulating liquid of the following parameters.
- The DASY4 system with an Isotropic E-Field Probe EX3DV3 was used for the measurements.
- The dipole was mounted on the small tripod so that the dipole feed point was positioned below the center marking of the flat phantom section and the dipole was oriented parallel to the body axis (the long side of the phantom). The standard measuring distance was 10 mm (above 1 GHz) and 15 mm (below 1 GHz) from dipole center to the simulating liquid surface.
- The coarse grid with a grid spacing of 15 mm was aligned with the dipole.
 For 5 GHz band - The coarse grid with a grid spacing of 10 mm was aligned with the dipole.
- Special 7x7x7 fine cube was chosen for cube
- Distance between probe sensors and phantom surface was set to 3 mm.
 For 5 GHz band - Distance between probe sensors and phantom surface was set to 2.5 mm
- The dipole input power (forward power) was $250 \text{ mW} \pm 3\%$.
- The results are normalized to 1 W input power.

IEEE Standard 1528-2003 Numerical reference SAR values (W/kg) for reference dipole and flat phantom

Frequency (MHz)	Distance (mm)	1g SAR [W/kg]	10g SAR [W/kg]	Local SAR at surface (above feed-point)
300	15	3	2	4.4
450	15	4.9	3.3	7.2
835	15	9.5	6.2	4.1
900	15	10.8	6.9	16.4
1450	10	29	16	5.02
1800	10	38.1	19.8	69.5
1900	10	39.7	20.5	72.1
2000	10	41.1	21.1	74.6
2450	10	52.4	24	104.2
3000	10	63.8	25.7	104.2

Reference SAR Values for HEAD & BODY-tissue from calibration certificate of SPEAG. Certificate no: D5GHzV2-1003_Nov07

f (MHz)	Head Tissue		Body Tissue	
	SAR _{1g}	SAR _{10g}	SAR _{1g}	SAR _{10g}
5200	78.6	22.1	74.7	21.1
5500	80.4	22.7	80.1	22.5
5800	79.9	22.4	70.8	19.8

9.1. SYSTEM CHECK RESULTS FOR D2450V2

System Validation Dipole: D2450V2 SN: 748

Date: May 11, 2009

Ambient Temperature = 24°C; Relative humidity = 40%

Measured by: Chaoyen Lin

Medium	CW Signal (MHz)	Forward power (mW)	Measured (Normalized to 1 W)		Target	Delta (%)	Tolerance (%)
			1g SAR:	10g SAR:			
Head	2450	250	1g SAR:	54.9	52.4	4.77	±10
			10g SAR:	25	24	4.17	

9.2. SYSTEM CHECK RESULTS FOR D5GHzV2

System Validation Dipole: D5GHzV2 SN 1003

Date: May 12, 2009

Ambient Temperature = 25°C; Relative humidity = 40%

Measured by: Chaoyen Lin

Medium	CW Signal (MHz)	Forward power (mW)	Measured (Normalized to 1 W)		Target	Delta (%)	Tolerance (%)
			1g SAR:	10g SAR:			
Muscle	5200	250	1g SAR:	80.3	74.7	7.50	±10
			10g SAR:	23.2	21.1	9.95	
Muscle	5500	250	1g SAR:	79.5	80.1	-0.75	±10
			10g SAR:	22.3	22.5	-0.89	
Muscle	5800	250	1g SAR:	72.4	70.8	2.26	±10
			10g SAR:	20.4	19.8	3.03	

10. OUTPUT POWER VERIFICATION

The following procedures had been used to prepare the EUT for the SAR test.

The client provided a special driver and program, wl_tools, which enable a user to control the frequency and output power of the module.

RF Conducted Output Power Measurement Results:

See Broadcom's Operational Description document for Average Power information.

11. SUMMARY OF TEST RESULTS

If the SAR measured at the middle channel for each test configuration is at least 3.0 dB (0.8 mW/g) lower than the SAR limit (1.6 mW/g), testing at the high and low channels is optional for such test configuration(s).

11.1. SAR TEST RESULT FOR THE 2.4 GHZ BAND

Mode	Channel	f (MHz)	Antenna	1g SAR (mW/g)	Limit (mW/g)
802.11b	6	2437	Main	0.0410	1.6
			Aux	0.0088	

11.2. SAR TEST RESULT FOR THE 5 GHZ BANDS

Band	Mode	Channel	f (MHz)	Antenna	1g SAR (mW/g)	Limit (mW/g)
5.2 GHz	802.11a	40	5200	Main	0.084	1.6
				Aux	0.085	
5.3 GHz	802.11a	60	5300	Main	0.112	
				Aux	0.106	
5.5 GHz	802.11a	120	5600	Main	0.112	
				Aux	0.119	
5.8 GHz	802.11a	157	5785	Main	0.117	
				Aux	0.107	

12. WORST-CASE SAR TEST PLOTS

WORST-CASE SAR PLOT for 2.4 GHz Band

Date/Time: 5/11/2009 12:19:42 PM

Test Laboratory: Compliance Certification Services

802.11bg for Lapheld

DUT: Broadcom; Type: HP Laptop; Serial: NA

Communication System: 802.11bg; Frequency: 2437 MHz; Duty Cycle: 1:1

Medium parameters used (interpolated): $f = 2437$ MHz; $\sigma = 1.92$ mho/m; $\epsilon_r = 53.1$; $\rho = 1000$ kg/m³

Phantom section: Flat Section

Room Ambient Temperature: 24.0 deg. C; Liquid Temperature: 23.0 deg. C

DASY4 Configuration:

- Area Scan setting - Find Secondary Maximum Within: 2.0 dB and with a peak SAR value greater than 0.0012W/kg
- Probe: EX3DV4 - SN3686; ConvF(6.48, 6.48, 6.48); Calibrated: 3/23/2009
- Sensor-Surface: 3mm (Mechanical Surface Detection)
- Electronics: DAE3 Sn427; Calibrated: 10/20/2008
- Phantom: Flat Phantom ELI4.0; Type: QDOVA001BA; Serial: SN:1003
- Measurement SW: DASY4, V4.7 Build 80; Postprocessing SW: SEMCAD, V1.8 Build 186

Lapheld, Main Ant M-ch/Area Scan (10x14x1): Measurement grid: dx=15mm, dy=15mm

[Info: Interpolated medium parameters used for SAR evaluation.](#)

Maximum value of SAR (measured) = 0.041 mW/g

Lapheld, Main Ant M-ch/Zoom Scan (7x7x9)/Cube 0: Measurement grid: dx=5mm, dy=5mm, dz=3mm

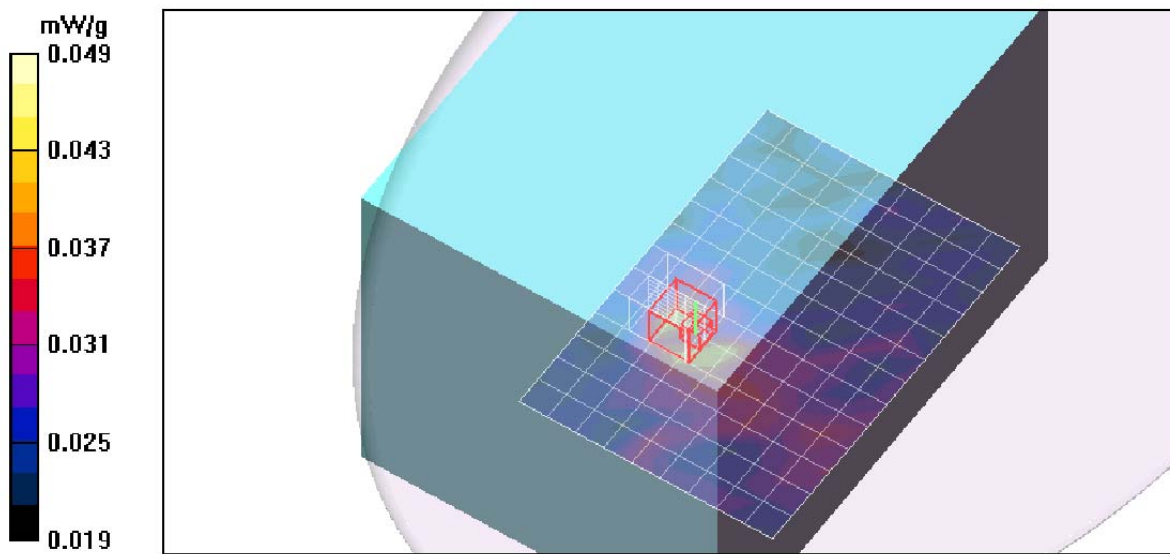
Reference Value = 3.62 V/m; Power Drift = -0.346 dB

Peak SAR (extrapolated) = 0.066 W/kg

SAR(1 g) = 0.041 mW/g; SAR(10 g) = 0.033 mW/g

[Info: Interpolated medium parameters used for SAR evaluation.](#)

Maximum value of SAR (measured) = 0.049 mW/g



WORST-CASE SAR PLOT for 5.2 GHz Band

Date/Time: 5/12/2009 4:31:26 PM

Test Laboratory: Compliance Certification Services

802.11a 5.2GHz

DUT: Broadcom; Type: HP Laptop; Serial: NA

Communication System: 802.11abgn; Frequency: 5200 MHz; Duty Cycle: 1:1
Medium parameters used: $f = 5200$ MHz; $\sigma = 5.34$ mho/m; $\epsilon_r = 45.9$; $\rho = 1000$ kg/m³
Phantom section: Flat Section

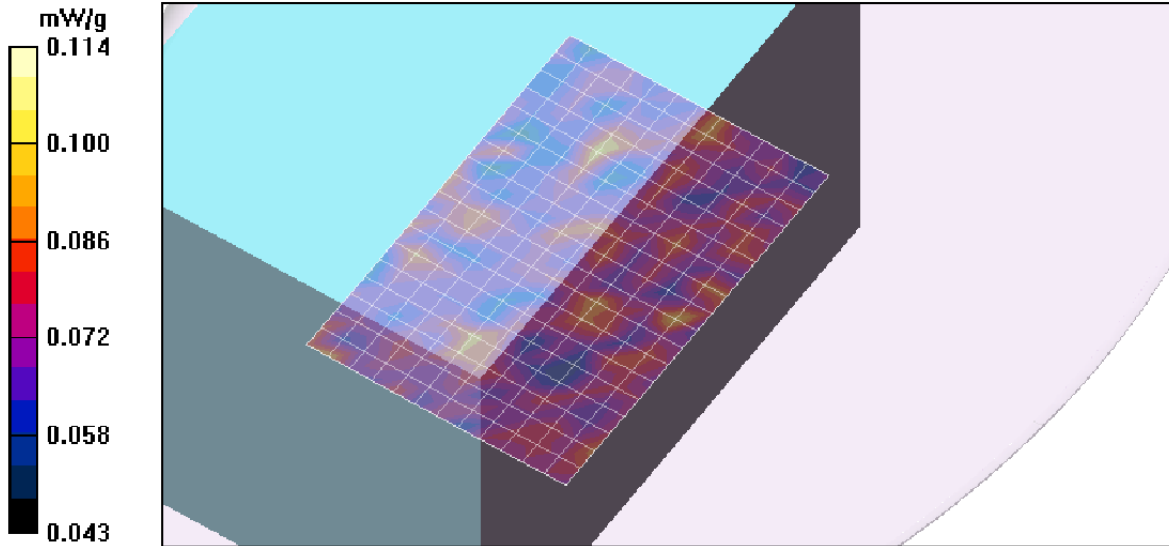
Room Ambient Temperature: 25.0 deg. C; Liquid Temperature: 24.0 deg. C

DASY4 Configuration:

- Area Scan setting - Find Secondary Maximum Within: 2.0 dB and with a peak SAR value greater than 0.0012W/kg
- Probe: EX3DV4 - SN3686; ConvF(4.08, 4.08, 4.08); Calibrated: 3/23/2009
- Sensor-Surface: 2.5mm (Mechanical Surface Detection)
- Electronics: DAE3 Sn427; Calibrated: 10/20/2008
- Phantom: Flat Phantom ELI4.0; Type: QDOVA001BA; Serial: SN:1003
- Measurement SW: DASY4, V4.7 Build 80; Postprocessing SW: SEMCAD, V1.8 Build 186

Lapheld, Aux Ant/Area Scan (13x19x1): Measurement grid: dx=10mm, dy=10mm
Maximum value of SAR (measured) = 0.100 mW/g

Lapheld, Aux Ant/Zoom Scan (7x7x9)/Cube 0: Measurement grid: dx=4mm, dy=4mm, dz=2.5mm
Reference Value = 3.72 V/m; Power Drift = -0.719 dB
Peak SAR (extrapolated) = 0.131 W/kg
SAR(1 g) = 0.085 mW/g; SAR(10 g) = 0.079 mW/g
Maximum value of SAR (measured) = 0.114 mW/g



WORST-CASE SAR PLOT for 5.3 GHz Band

Date/Time: 5/12/2009 5:22:09 PM

Test Laboratory: Compliance Certification Services

802.11a 5.3GHz

DUT: Broadcom; Type: HP Laptop; Serial: NA

Communication System: 802.11abgn; Frequency: 5300 MHz; Duty Cycle: 1:1
Medium parameters used: $f = 5300$ MHz; $\sigma = 5.51$ mho/m; $\epsilon_r = 45.9$; $\rho = 1000$ kg/m³
Phantom section: Flat Section

Room Ambient Temperature: 25.0 deg. C; Liquid Temperature: 24.0 deg. C

DASY4 Configuration:

- Area Scan setting - Find Secondary Maximum Within: 2.0 dB and with a peak SAR value greater than 0.0012W/kg
- Probe: EX3DV4 - SN3686; ConvF(3.81, 3.81, 3.81); Calibrated: 3/23/2009
- Sensor-Surface: 2.5mm (Mechanical Surface Detection)
- Electronics: DAE3 Sn427; Calibrated: 10/20/2008
- Phantom: Flat Phantom ELI4.0; Type: QDOVA001BA; Serial: SN:1003
- Measurement SW: DASY4, V4.7 Build 80; Postprocessing SW: SEMCAD, V1.8 Build 186

Lapheld, Main Ant/Area Scan (13x19x1): Measurement grid: dx=10mm, dy=10mm

Maximum value of SAR (measured) = 0.121 mW/g

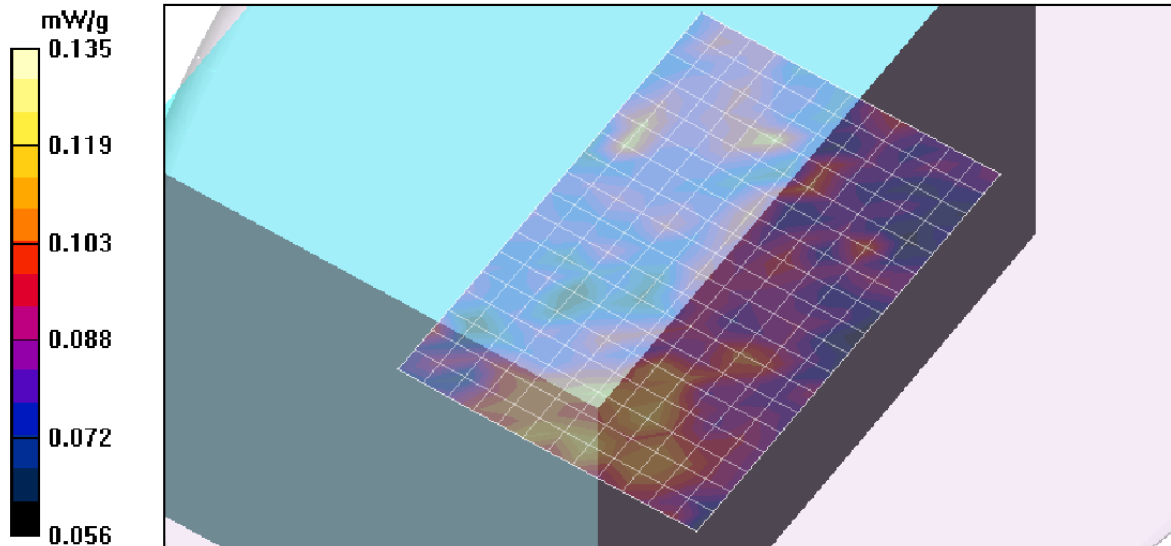
Lapheld, Main Ant/Zoom Scan (7x7x9)/Cube 0: Measurement grid: dx=4mm, dy=4mm, dz=2.5mm

Reference Value = 4.21 V/m; Power Drift = -0.991 dB

Peak SAR (extrapolated) = 0.196 W/kg

SAR(1 g) = 0.112 mW/g; SAR(10 g) = 0.097 mW/g

Maximum value of SAR (measured) = 0.135 mW/g



WORST-CASE SAR PLOT for 5.5 GHz Band

Date/Time: 5/12/2009 7:42:28 PM

Test Laboratory: Compliance Certification Services

802.11a 5.5 GHz

DUT: Broadcom; Type: HP Laptop; Serial: NA

Communication System: 802.11abgn; Frequency: 5600 MHz; Duty Cycle: 1:1
Medium parameters used: $f = 5600$ MHz; $\sigma = 5.93$ mho/m; $\epsilon_r = 45.4$; $\rho = 1000$ kg/m³
Phantom section: Flat Section

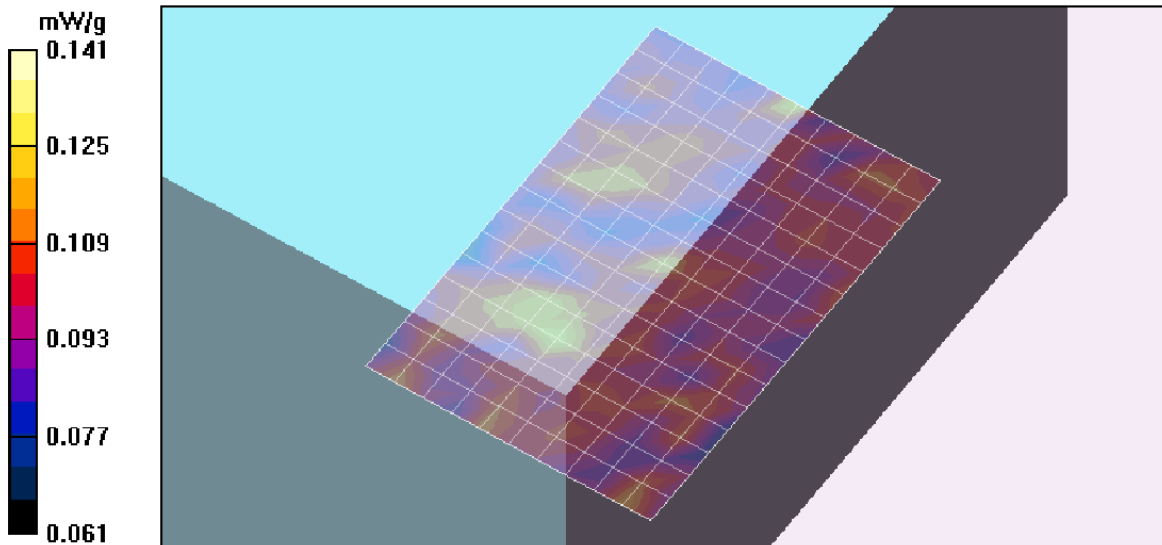
Room Ambient Temperature: 25.0 deg. C; Liquid Temperature: 24.0 deg. C

DASY4 Configuration:

- Area Scan setting - Find Secondary Maximum Within: 2.0 dB and with a peak SAR value greater than 0.0012W/kg
- Probe: EX3DV4 - SN3686; ConvF(3.61, 3.61, 3.61); Calibrated: 3/23/2009
- Sensor-Surface: 2.5mm (Mechanical Surface Detection)
- Electronics: DAE3 Sn427; Calibrated: 10/20/2008
- Phantom: Flat Phantom ELI4.0; Type: QDOVA001BA; Serial: SN:1003
- Measurement SW: DASY4, V4.7 Build 80; Postprocessing SW: SEMCAD, V1.8 Build 186

Lapheld, Aux Ant/Area Scan (11x16x1): Measurement grid: dx=10mm, dy=10mm
Maximum value of SAR (measured) = 0.125 mW/g

Lapheld, Aux Ant/Zoom Scan (7x7x9)/Cube 0: Measurement grid: dx=4mm, dy=4mm, dz=2.5mm
Reference Value = 4.02 V/m; Power Drift = 0.595 dB
Peak SAR (extrapolated) = 0.178 W/kg
SAR(1 g) = 0.119 mW/g; SAR(10 g) = 0.109 mW/g
Maximum value of SAR (measured) = 0.141 mW/g



WORST-CASE SAR PLOT for 5.8 GHz Band

Date/Time: 5/12/2009 9:05:58 PM

Test Laboratory: Compliance Certification Services

802.11a 5.8 GHz

DUT: Broadcom; Type: HP Laptop; Serial: NA

Communication System: 802.11abgn; Frequency: 5785 MHz; Duty Cycle: 1:1
Medium parameters used (interpolated): $f = 5785$ MHz; $\sigma = 6.2$ mho/m; $\epsilon_r = 44.7$; $\rho = 1000$ kg/m³
Phantom section: Flat Section

Room Ambient Temperature: 25.0 deg. C; Liquid Temperature: 24.0 deg. C

DASY4 Configuration:

- Area Scan setting - Find Secondary Maximum Within: 2.0 dB and with a peak SAR value greater than 0.0012W/kg
- Probe: EX3DV4 - SN3686; ConvF(3.84, 3.84, 3.84); Calibrated: 3/23/2009
- Sensor-Surface: 2.5mm (Mechanical Surface Detection)
- Electronics: DAE3 Sn427; Calibrated: 10/20/2008
- Phantom: Flat Phantom ELI4.0; Type: QDOVA001BA; Serial: SN:1003
- Measurement SW: DASY4, V4.7 Build 80; Postprocessing SW: SEMCAD, V1.8 Build 186

Lapheld, Main Ant/Area Scan (11x16x1): Measurement grid: dx=10mm, dy=10mm

Info: [Interpolated medium parameters used for SAR evaluation.](#)

Maximum value of SAR (measured) = 0.129 mW/g

Lapheld, Main Ant/Zoom Scan (7x7x9)/Cube 0: Measurement grid: dx=4mm, dy=4mm, dz=2.5mm

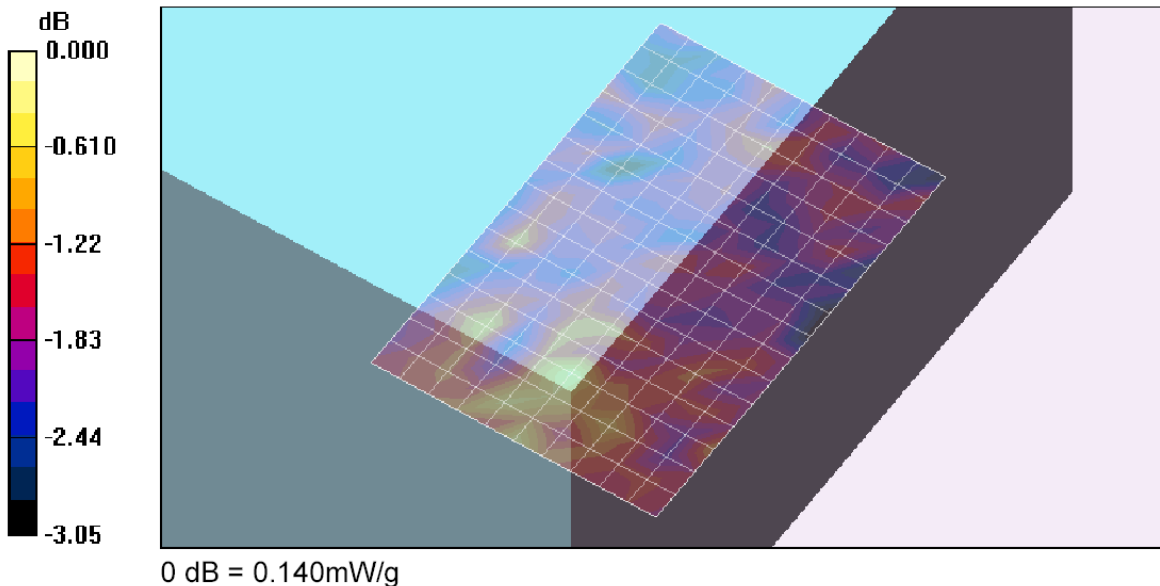
Reference Value = 4.21 V/m; Power Drift = -0.525 dB

Peak SAR (extrapolated) = 0.259 W/kg

SAR(1 g) = 0.117 mW/g; SAR(10 g) = 0.105 mW/g

Info: [Interpolated medium parameters used for SAR evaluation.](#)

Maximum value of SAR (measured) = 0.140 mW/g



13. ATTACHMENTS

No.	Contents	No. of page (s)
1	System Performance Check Plots	8
2-1	SAR Test Plots for 2.4 GHz Band	2
2-2	SAR Test Plots for 5 GHz Bands	8
3	Certificate of E-Field Probe – EX3DV4 SN 3686	10
4	Certificate of System Validation Dipole - D2450V2 SN:748	6
5	Certificate of System Validation Dipole – D5GHzV2 SN 1003	15