

Test Laboratory: Compliance Certification Services

System Performance Check @ 2450 MHz

DUT: Dipole 2450 MHz; Type: D2450V2; Serial: D2450V2 - SN:706

Communication System: CW - 2450 MHz; Frequency: 2450 MHz; Duty Cycle: 1:1
Medium parameters used: $f = 2450 \text{ MHz}$; $\sigma = 1.97 \text{ mho/m}$; $\epsilon_r = 50.5$; $\rho = 1000 \text{ kg/m}^3$
Phantom section: Flat Section

Room Ambient Temperature: 25.0 deg. C; Liquid Temperature: 24.0 deg. C

DASY4 Configuration:

- Area Scan setting - Find Secondary Maximum Within: 2.0 dB and with peak SAR value greater than 0.0012W/kg
- Probe: EX3DV3 - SN3531; ConvF(7.91, 7.91, 7.91); Calibrated: 4/23/2008
- Sensor-Surface: 4mm (Mechanical Surface Detection)
- Electronics: DAE3 Sn500; Calibrated: 11/16/2007
- Phantom: Flat Phantom ELI4.0; Type: QDOVA001BA; Serial: SN:1003
- Measurement SW: DASY4, V4.7 Build 71; Postprocessing SW: SEMCAD, V1.8 Build 184

d=10mm, Pin=250mW 2/Area Scan (7x7x1): Measurement grid: dx=15mm, dy=15mm

Maximum value of SAR (measured) = 14.2 mW/g

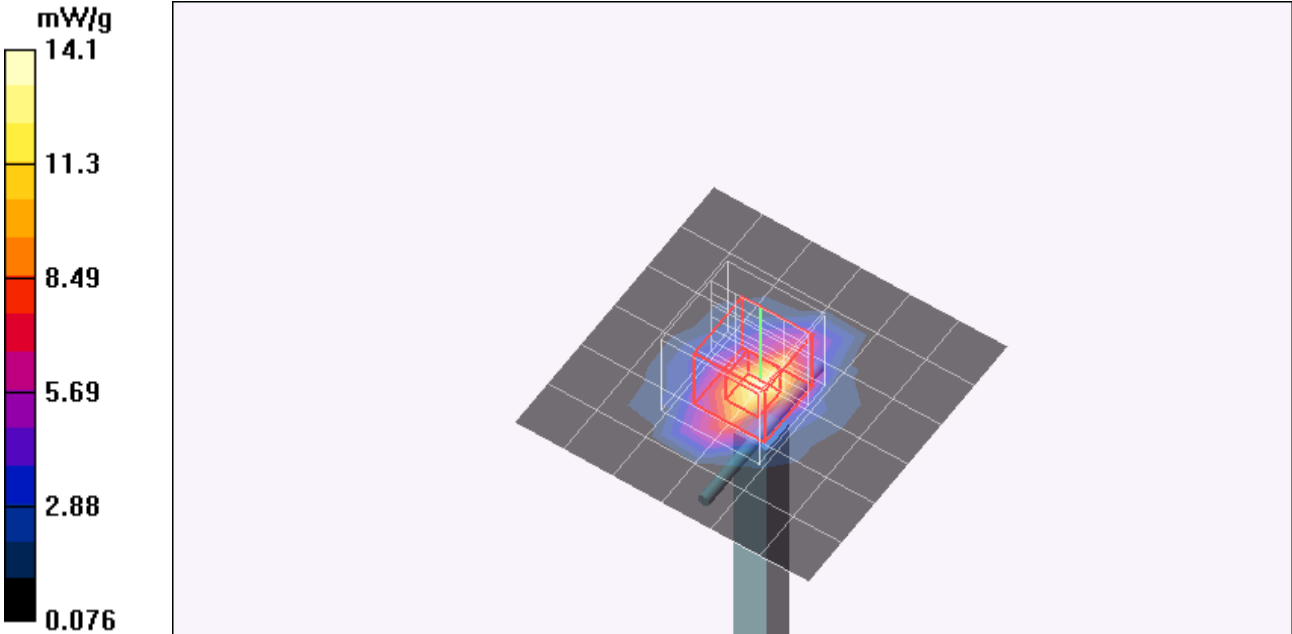
d=10mm, Pin=250mW 2/Zoom Scan (5x5x7)/Cube 0: Measurement grid: dx=7.5mm, dy=7.5mm, dz=5mm

Reference Value = 85.0 V/m; Power Drift = 0.030 dB

Peak SAR (extrapolated) = 25.8 W/kg

SAR(1 g) = 12.6 mW/g; SAR(10 g) = 5.85 mW/g

Maximum value of SAR (measured) = 14.1 mW/g



Test Laboratory: Compliance Certification Services

System Performance Check @ 2450 MHz

DUT: Dipole 2450 MHz; Type: D2450V2; Serial: D2450V2 - SN:706

Communication System: CW - 2450 MHz; Frequency: 2450 MHz; Duty Cycle: 1:1

d=10mm, Pin=250mW 2/Area Scan (7x7x1): Measurement grid: dx=15mm, dy=15mm

Maximum value of SAR (measured) = 14.2 mW/g

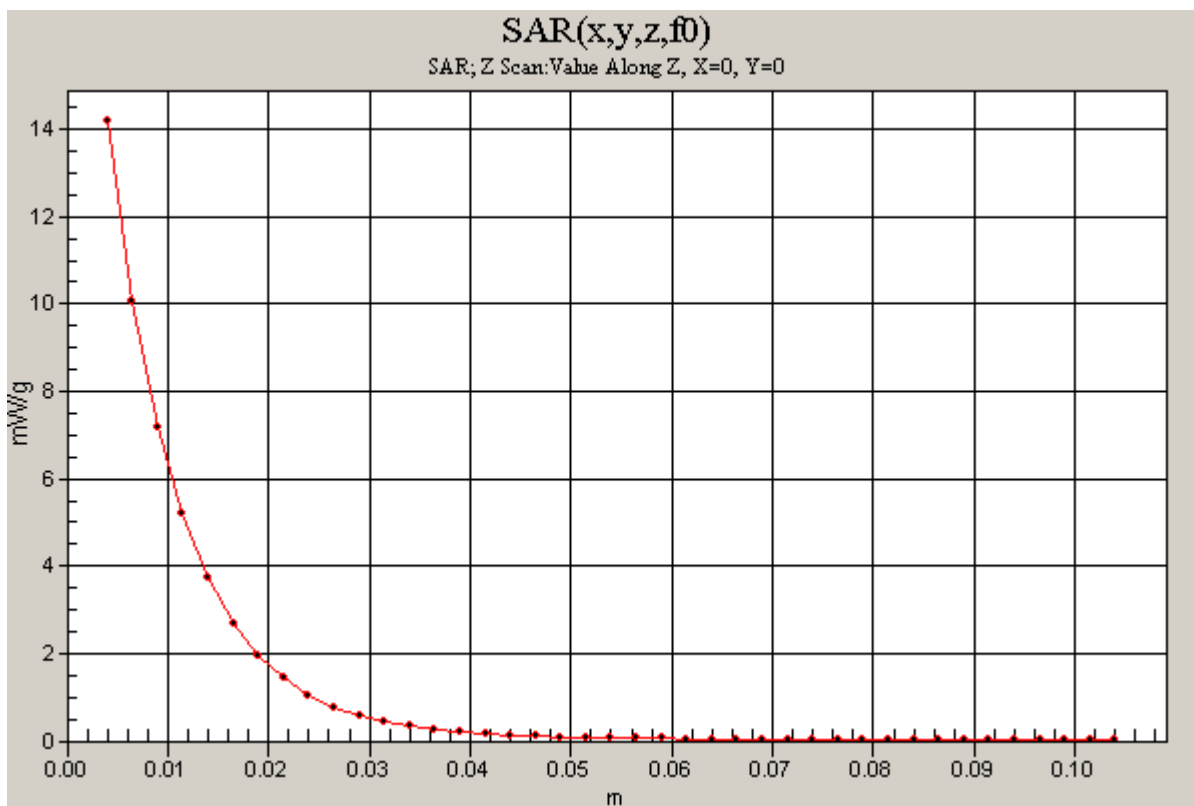
d=10mm, Pin=250mW 2/Zoom Scan (5x5x7)/Cube 0: Measurement grid: dx=7.5mm, dy=7.5mm, dz=5mm

Reference Value = 85.0 V/m; Power Drift = 0.030 dB

Peak SAR (extrapolated) = 25.8 W/kg

SAR(1 g) = 12.6 mW/g; SAR(10 g) = 5.85 mW/g

Maximum value of SAR (measured) = 14.1 mW/g

d=10mm, Pin=250mW 2/Z Scan (1x1x41): Measurement grid: dx=20mm, dy=20mm, dz=2.5mm

Test Laboratory: Compliance Certification Services

System Performance Check @ 2450 MHz

DUT: Dipole 2450 MHz; Type: D2450V2; Serial: D2450V2 - SN:748

Communication System: CW - 2450 MHz; Frequency: 2450 MHz; Duty Cycle: 1:1
 Medium parameters used: $f = 2450$ MHz; $\sigma = 2.02$ mho/m; $\epsilon_r = 50.7$; $\rho = 1000$ kg/m³
 Phantom section: Flat Section

Room Ambient Temperature: 24.0 deg. C; Liquid Temperature: 23.0 deg. C

DASY4 Configuration:

- Area Scan setting - Find Secondary Maximum Within: 2.0 dB and with peak SAR value greater than 0.0012W/kg
- Probe: EX3DV3 - SN3531; ConvF(7.91, 7.91, 7.91); Calibrated: 4/23/2008
- Sensor-Surface: 4mm (Mechanical Surface Detection)
- Electronics: DAE3 Sn500; Calibrated: 11/16/2007
- Phantom: SAM 2; Type: SAM 2; Serial: 1050
- Measurement SW: DASY4, V4.7 Build 71; Postprocessing SW: SEMCAD, V1.8 Build 184

d=10mm, Pin=250mW 2/Area Scan (7x7x1): Measurement grid: dx=15mm, dy=15mm

Maximum value of SAR (measured) = 13.8 mW/g

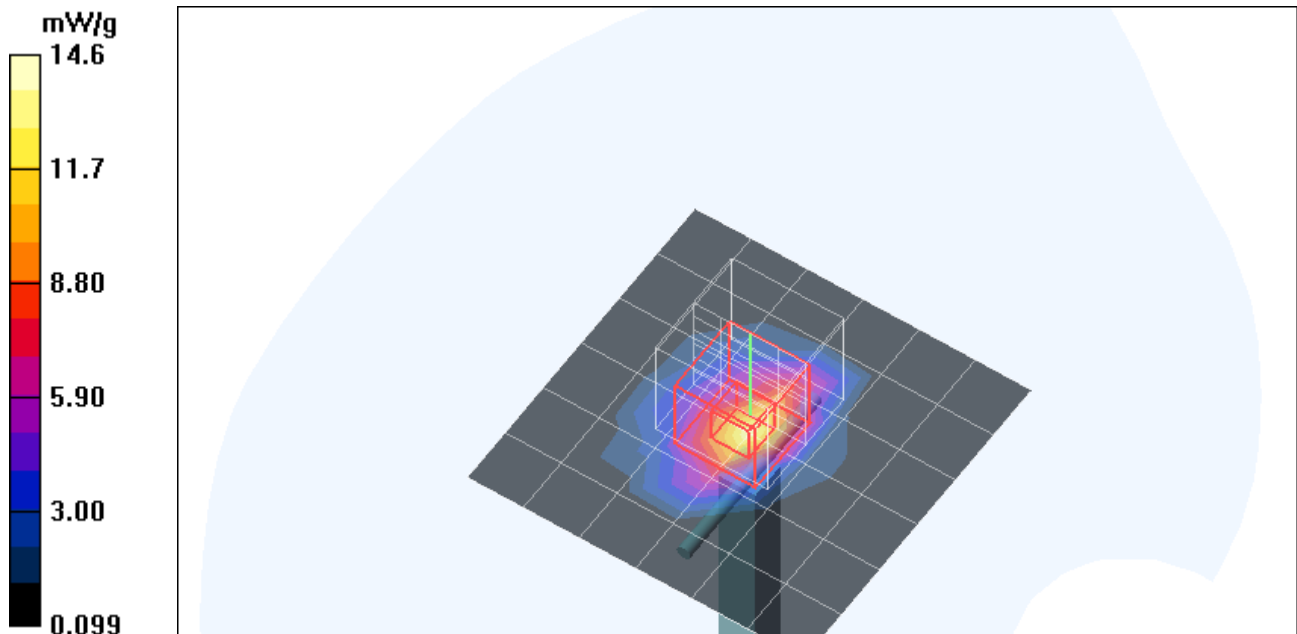
d=10mm, Pin=250mW 2/Zoom Scan (5x5x7)/Cube 0: Measurement grid: dx=7.5mm, dy=7.5mm, dz=5mm

Reference Value = 82.5 V/m; Power Drift = 0.198 dB

Peak SAR (extrapolated) = 27.3 W/kg

SAR(1 g) = 13 mW/g; SAR(10 g) = 5.99 mW/g

Maximum value of SAR (measured) = 14.6 mW/g



Test Laboratory: Compliance Certification Services

System Performance Check @ 2450 MHz

DUT: Dipole 2450 MHz; Type: D2450V2; Serial: D2450V2 - SN:748

Communication System: CW - 2450 MHz; Frequency: 2450 MHz; Duty Cycle: 1:1

d=10mm, Pin=250mW 2/Area Scan (7x7x1): Measurement grid: dx=15mm, dy=15mm

Maximum value of SAR (measured) = 13.8 mW/g

d=10mm, Pin=250mW 2/Zoom Scan (5x5x7)/Cube 0: Measurement grid: dx=7.5mm, dy=7.5mm, dz=5mm

Reference Value = 82.5 V/m; Power Drift = 0.198 dB

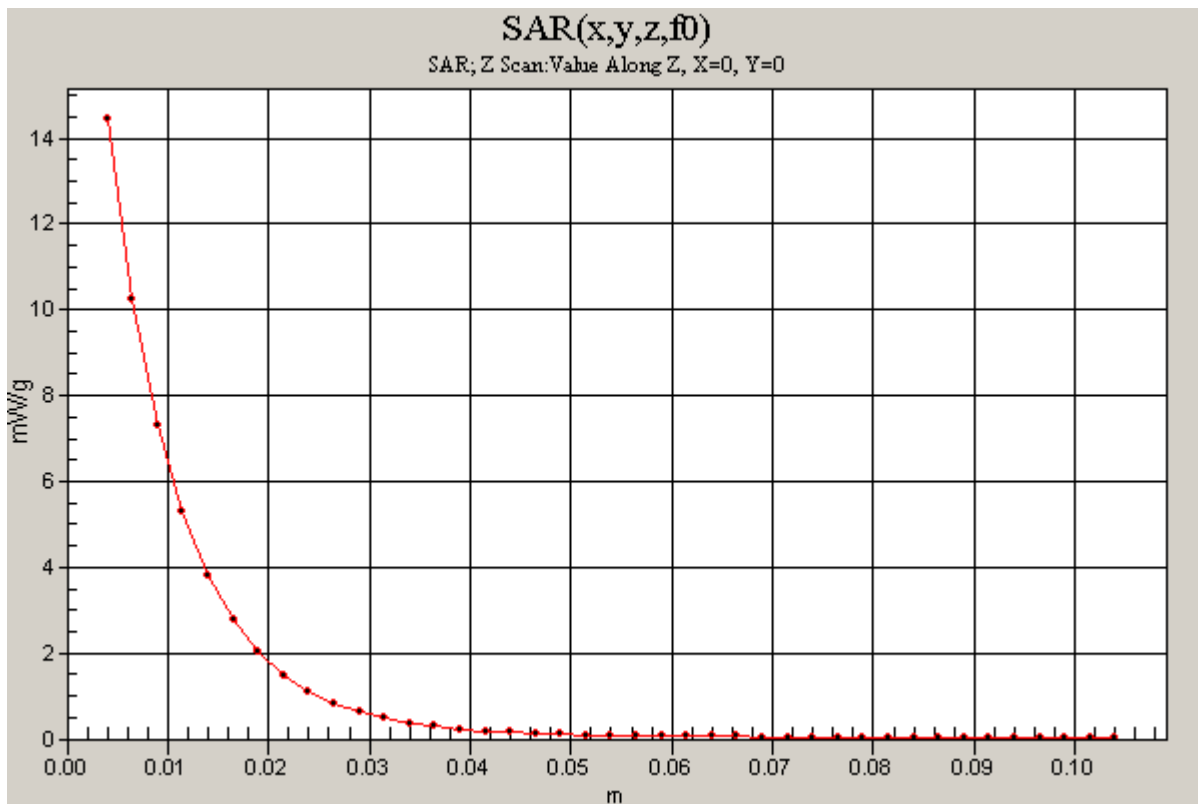
Peak SAR (extrapolated) = 27.3 W/kg

SAR(1 g) = 13 mW/g; SAR(10 g) = 5.99 mW/g

Maximum value of SAR (measured) = 14.6 mW/g

d=10mm, Pin=250mW 2/Z Scan (1x1x41): Measurement grid: dx=20mm, dy=20mm, dz=2.5mm

Maximum value of SAR (measured) = 14.4 mW/g



Test Laboratory: Compliance Certification Services

SystemPerformanceCheck-D5GHz-uniform

DUT: Dipole 5200-5800MHz; Type: D5GHzV2;Serial: 1003

Communication System: CW;Frequency: 5500 MHz;Duty Cycle: 1:1

Medium parameters used: $f = 5500$ MHz; $\sigma = 5.8$ mho/m; $\epsilon_r = 47.5$; $\rho = 1000$ kg/m³

Phantom section: Flat Section

Room AmbientTemperature: 24.0deg. C; Liquid Temperature: 23.0 deg. C

DASY4 Configuration:

- Area Scan setting - Find Secondary Maximum Within: 2.0 dB and with peak SAR value greater than 0.0012W/kg
- Probe: EX3DV3 - SN3531; ConvF(3.99, 3.99, 3.99); Calibrated: 4/23/2008
- Sensor-Surface: 2.5mm (Mechanical Surface Detection)
- Electronics: DAE3 Sn500; Calibrated: 11/16/2007
- Phantom: Flat Phantom ELI4.0; Type: QDOVA001BA; Serial: SN:1003
- Measurement SW: DASY4, V4.7 Build 71; Postprocessing SW: SEMCAD, V1.8 Build 184

d=10mm, Pin=250mW, f=5500 MHz/Area Scan (10x10x1): Measurement grid: dx=10mm, dy=10mm

Maximum value of SAR (measured) = 24.4 mW/g

d=10mm, Pin=250mW, f=5500 MHz/Zoom Scan (4.3x4.3x3mm), dist=2mm (8x8x8)/Cube

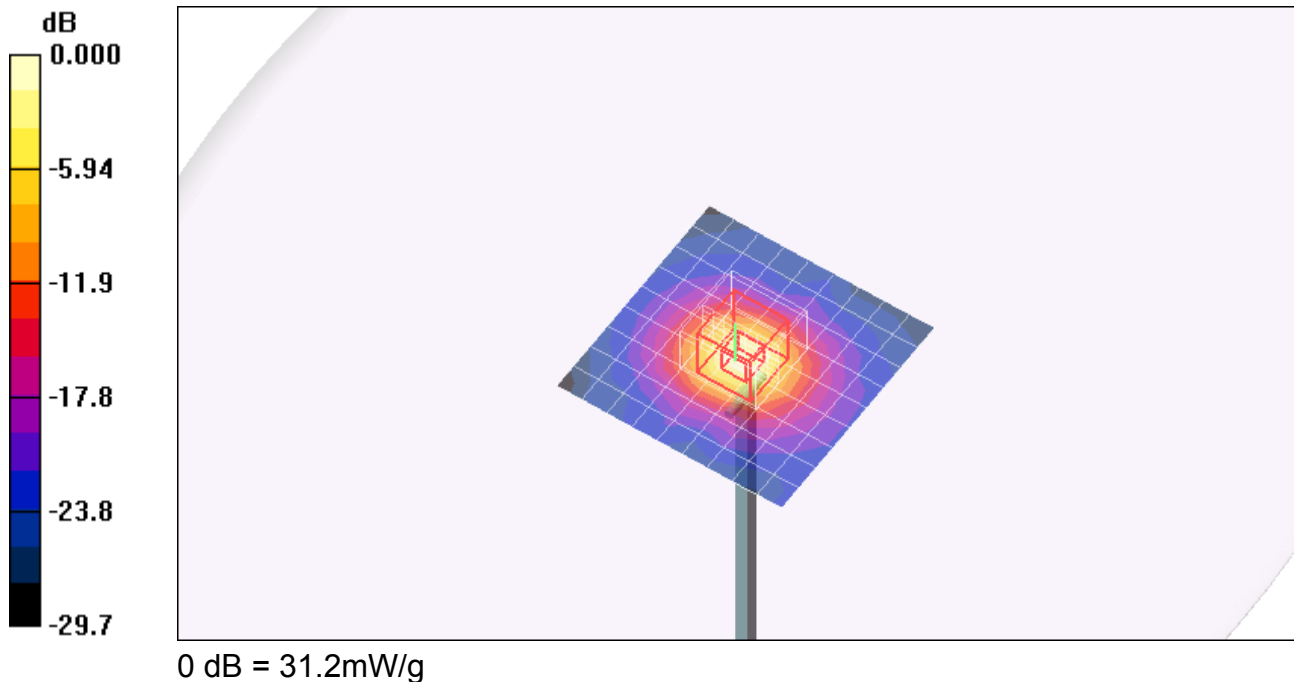
0: Measurement grid: dx=4.3mm, dy=4.3mm, dz=3mm

Reference Value = 72.5 V/m; Power Drift = 0.040 dB

Peak SAR (extrapolated) = 69.5 W/kg

SAR(1 g) = 18.2 mW/g; SAR(10 g) = 5.38 mW/g

Maximum value of SAR (measured) = 31.2 mW/g



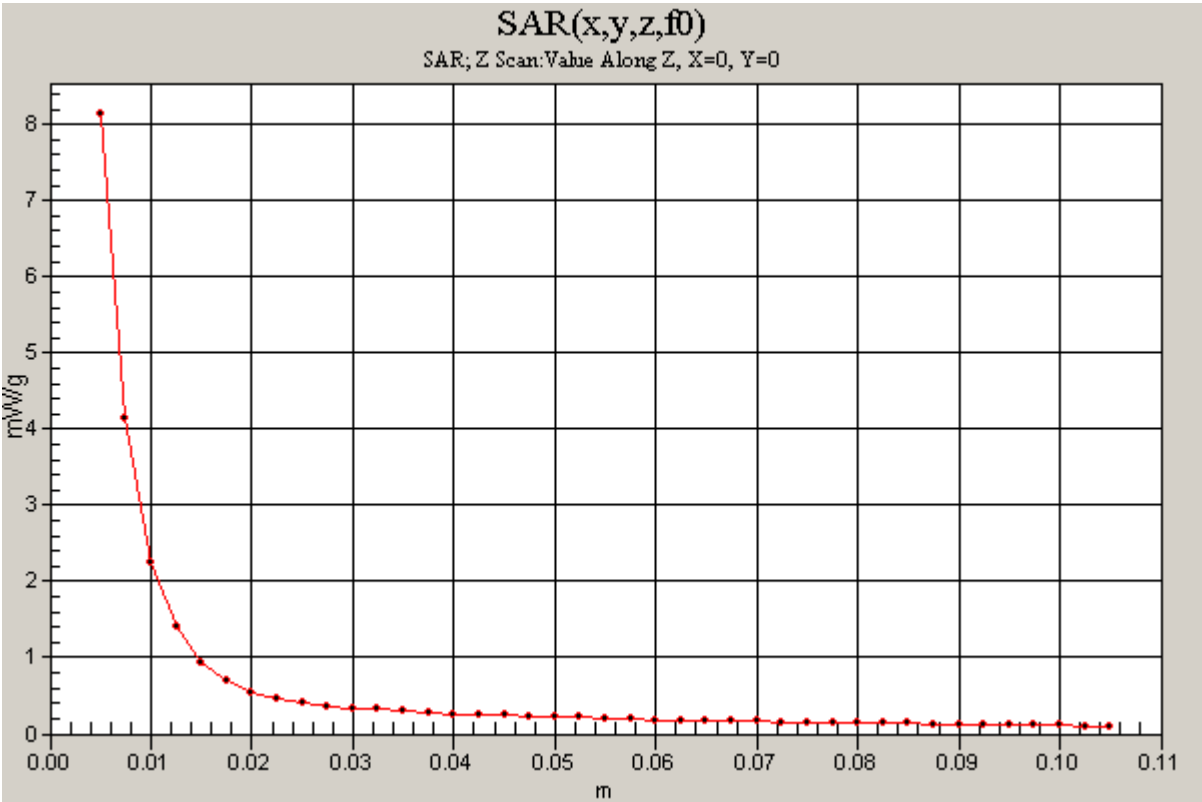
Test Laboratory: Compliance Certification Services

SystemPerformanceCheck-D5GHz-uniform

DUT: Dipole 5200-5800MHz; Type: D5GHzV2; Serial: 1003

Communication System: CW; Frequency: 5500 MHz;Duty Cycle: 1:1

d=10mm, Pin=250mW, f=5500 MHz/Z Scan (1x1x41): Measurement grid: dx=20mm, dy=20mm, dz=2.5mm
Maximum value of SAR (measured) = 8.14 mW/g



Test Laboratory: Compliance Certification Services

SystemPerformanceCheck-D5GHz-uniform

DUT: Dipole 5200-5800MHz; Type: D5GHzV2;Serial: 1003

Communication System: CW;Frequency: 5500 MHz;Duty Cycle: 1:1

Medium parameters used: $f = 5500$ MHz; $\sigma = 5.8$ mho/m; $\epsilon_r = 47.5$; $\rho = 1000$ kg/m³

Phantom section: Flat Section

Room AmbientTemperature: 24.0deg. C; Liquid Temperature: 23.0 deg. C

DASY4 Configuration:

- Area Scan setting - Find Secondary Maximum Within: 2.0 dB and with peak SAR value greater than 0.0012W/kg
- Probe: EX3DV3 - SN3531; ConvF(3.99, 3.99, 3.99); Calibrated: 4/23/2008
- Sensor-Surface: 2.5mm (Mechanical Surface Detection)
- Electronics: DAE3 Sn500; Calibrated: 11/16/2007
- Phantom: Flat Phantom ELI4.0; Type: QDOVA001BA; Serial: SN:1003
- Measurement SW: DASY4, V4.7 Build 71; Postprocessing SW: SEMCAD, V1.8 Build 184

d=10mm, Pin=250mW, f=5500 MHz/Area Scan (10x10x1): Measurement grid: dx=10mm, dy=10mm

Maximum value of SAR (measured) = 23.8 mW/g

d=10mm, Pin=250mW, f=5500 MHz/Zoom Scan (4.3x4.3x3mm), dist=2mm (8x8x8)/Cube

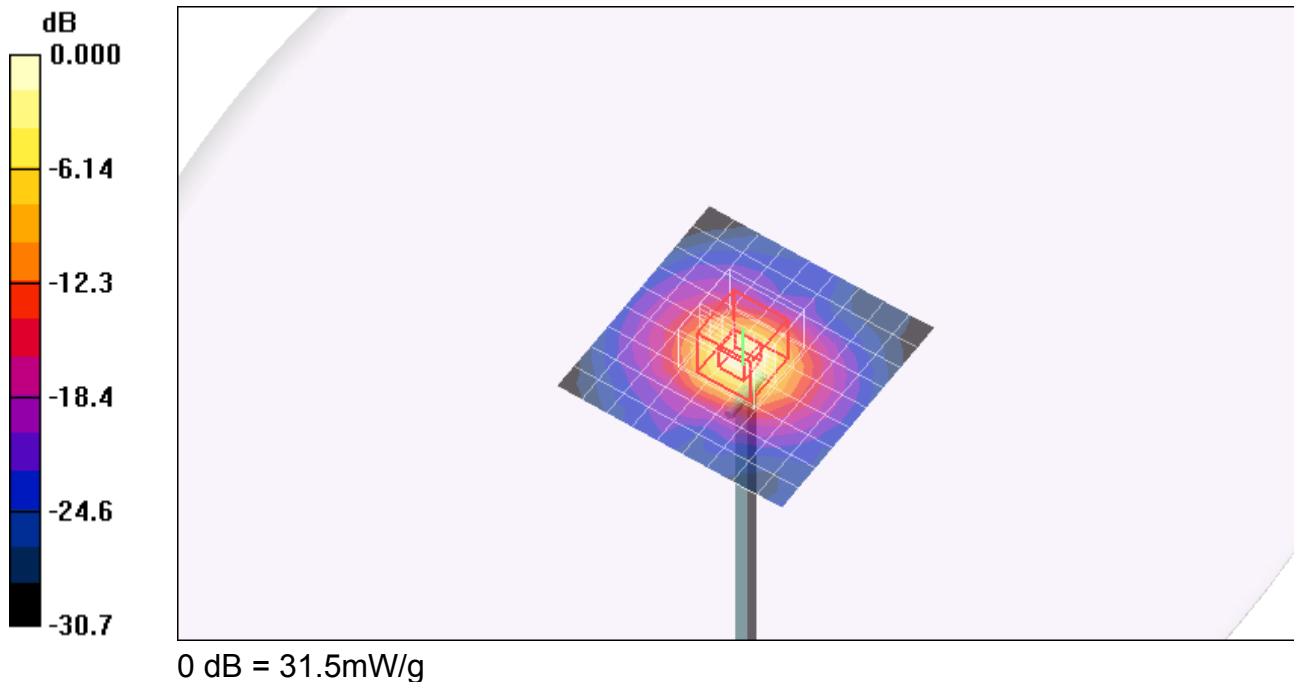
0: Measurement grid: dx=4.3mm, dy=4.3mm, dz=3mm

Reference Value = 71.9 V/m; Power Drift = 0.017 dB

Peak SAR (extrapolated) = 75.9 W/kg

SAR(1 g) = 18.8 mW/g; SAR(10 g) = 5.55 mW/g

Maximum value of SAR (measured) = 31.5 mW/g



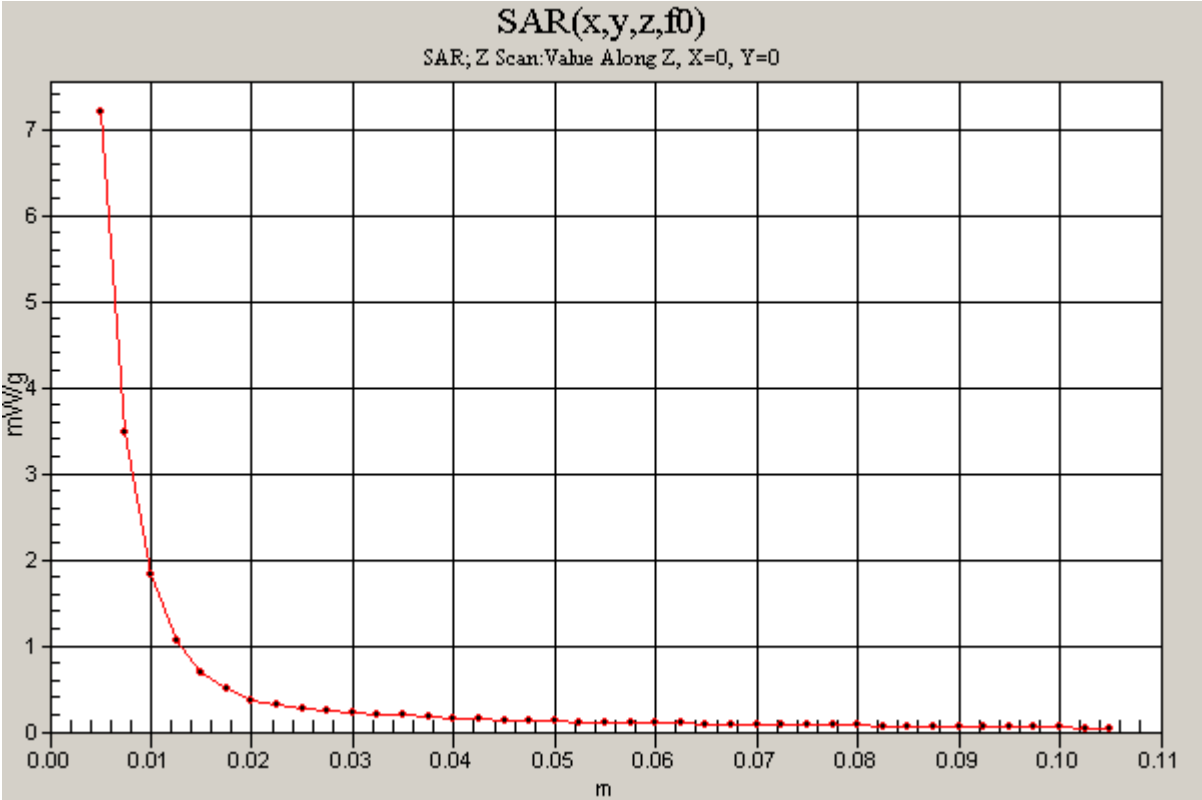
Test Laboratory: Compliance Certification Services

SystemPerformanceCheck-D5GHz-uniform

DUT: Dipole 5200-5800MHz; Type: D5GHzV2; Serial: 1003

Communication System: CW; Frequency: 5500 MHz;Duty Cycle: 1:1

d=10mm, Pin=250mW, f=5500 MHz/Z Scan (1x1x41): Measurement grid: dx=20mm, dy=20mm, dz=2.5mm
Maximum value of SAR (measured) = 7.20 mW/g



Test Laboratory: Compliance Certification Services

SystemPerformanceCheck-D5GHz-uniform

DUT: Dipole 5200-5800MHz; Type: D5GHzV2;Serial: 1003

Communication System: CW;Frequency: 5800 MHz;Duty Cycle: 1:1

Medium parameters used: $f = 5800$ MHz; $\sigma = 6.24$ mho/m; $\epsilon_r = 47$; $\rho = 1000$ kg/m³

Phantom section: Flat Section

Room AmbientTemperature: 24.0deg. C; Liquid Temperature: 23.0 deg. C

DASY4 Configuration:

- Area Scan setting - Find Secondary Maximum Within: 2.0 dB and with a peak SAR value greater than 0.0012W/kg
- Probe: EX3DV3 - SN3531; ConvF(3.7, 3.7, 3.7); Calibrated: 4/23/2008
- Sensor-Surface: 2.5mm (Mechanical Surface Detection)Sensor-Surface: 2.5mm (Mechanical Surface Detection)
- Electronics: DAE3 Sn500; Calibrated: 11/16/2007
- Phantom: Flat Phantom ELI4.0; Type: QDOVA001BA; Serial: SN:1003
- Measurement SW: DASY4, V4.7 Build 71; Postprocessing SW: SEMCAD, V1.8 Build 184

d=10mm, Pin=250mW, f=5500 MHz/Area Scan (10x10x1): Measurement grid: dx=10mm, dy=10mm

Maximum value of SAR (measured) = 17.8 mW/g

d=10mm, Pin=250mW, f=5500 MHz/Zoom Scan (4.3x4.3x3mm), dist=2mm (8x8x8)/Cube

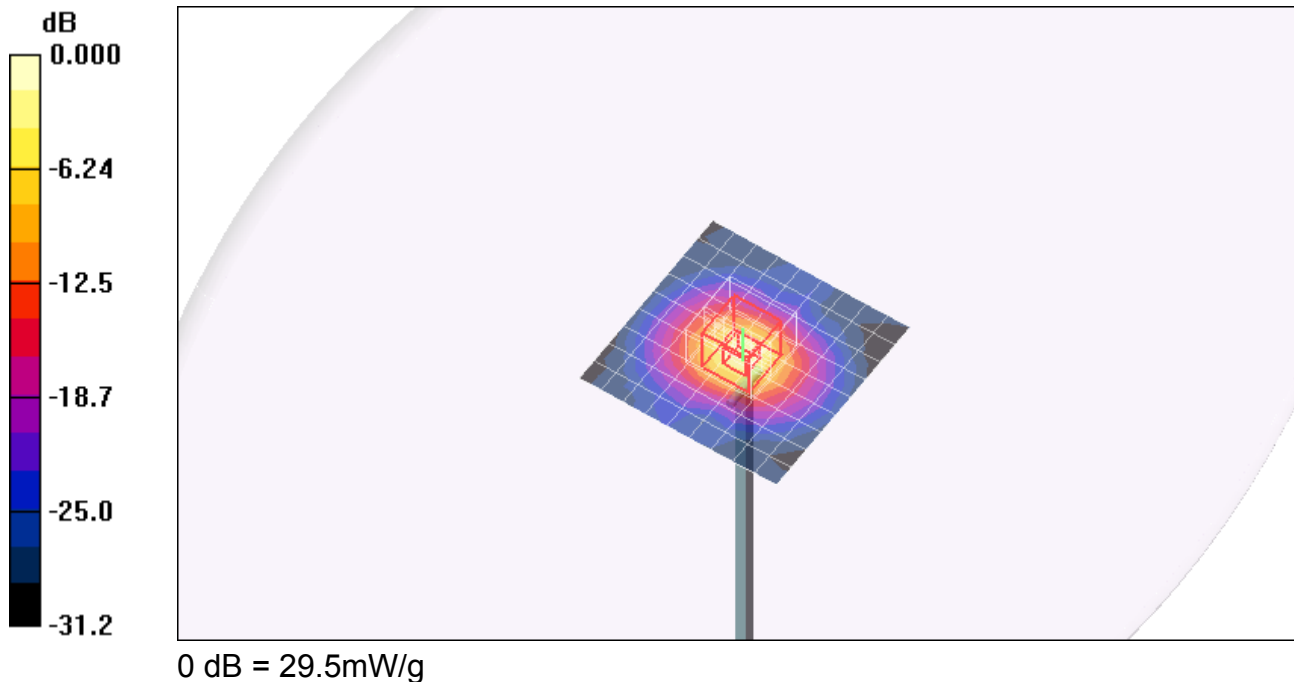
0: Measurement grid: dx=4.3mm, dy=4.3mm, dz=3mm

Reference Value = 73.4 V/m; Power Drift = 0.011 dB

Peak SAR (extrapolated) = 75.1 W/kg

SAR(1 g) = 17.5 mW/g; SAR(10 g) = 5.15 mW/g

Maximum value of SAR (measured) = 29.5 mW/g



Test Laboratory: Compliance Certification Services

SystemPerformanceCheck-D5GHz-uniform

DUT: Dipole 5200-5800MHz; Type: D5GHzV2; Serial: 1003

Communication System: CW; Frequency: 5800 MHz;Duty Cycle: 1:1

d=10mm, Pin=250mW, f=5500 MHz/Z Scan (1x1x41): Measurement grid: dx=20mm, dy=20mm, dz=2.5mm
Maximum value of SAR (measured) = 5.56 mW/g

