

Antenna Regulatory Information

• Product type	• Main WLAN antenna
• Model number	• Hepburn
• Revision	• X02
• Manufacturer Part No. :	• QT0932-11-001-R
• Dell Part No. :	•

• Product type	• MIMO WLAN antenna
• Model number	• Hepburn
• Revision	• X02
• Manufacturer Part No. :	• QT0932-11-004-R
• Dell Part No. :	•

Amphenol Taiwan Corporation

71, Lane 956, Jungshan Rd., Taoyuan City, Taiwan 330

Template Revision 052107

1. Specifications

Antenna Specifications-Main WLAN/WiMax

Antenna Type (Material, Technology)	PIFA/ Metal stamping, Foil
Antenna Model Number	Hepburn
Operating Frequency Range(s)	2G: 2.412~2.7 GHz 5G: 5.15~5.85 GHz
Peak Gain (dBi)	2G: 1.12dBi
	5G: -1.23dBi
Radio Connector Type	IPEX 20308-111R-32/ 20363-111R-37 or equivalent connector
Mid-Line Connector Type (If Applicable)	N/A

Remark: Peak Gains include all system losses (connector, cable, etc)

Cable Specifications

Cable Parameters	WLAN antenna		
	LCD Side	Base Side	Total
Length (mm)	N/A	N/A	655
Loss (Including Connectors) (dB, 2GHz)			1.63 dB
Loss (Including Connectors) (dB, 5GHz)			2.75 dB
Description (Color, Diameter, Manufacturer)	Color: white OD: 1.13 low loss GBE		

Antenna Specifications-Aux WLAN/WiMax

Antenna Type (Material, Technology)	PIFA/ Metal stamping, Foil
Antenna Model Number	Hepburn
Operating Frequency Range(s)	2G: 2.412~2.7 GHz 5G: 5.15~5.85 GHz
Peak Gain (dBi)	2G: -1.92dBi
Peak Gain (dBi)	5G: 2.36dBi
Radio Connector Type	IPEX 20308-111R-32/ 20363-111R-37 or equivalent connector
Mid-Line Connector Type (If Applicable)	N/A

Remark: Peak Gains include all system losses (connector, cable, etc)

Cable Specifications

Cable Parameters	WLAN antenna		
	LCD Side	Base Side	Total
Length (mm)	N/A	N/A	667
Loss (Including Connectors) (dB, 2GHz)			1.66 dB
Loss (Including Connectors) (dB, 5GHz)			2.8 dB
Description (Color, Diameter, Manufacturer)	Color: black OD: 1.13 low loss GBE		

Antenna Specifications-WLAN MIMO

Antenna Type (Material, Technology)	PIFA/ Metal stamping, Foil
Antenna Model Number	Hepburn
Operating Frequency Range(s)	2G: 2.412~2.462 GHz 5G: 5.15~5.85 GHz
Peak Gain (dBi)	2G: -0.49dBi
Peak Gain (dBi)	5G: -0.28dBi
Radio Connector Type	IPEX 20308-111R-32/ 20363-111R-37 or equivalent connector
Mid-Line Connector Type (If Applicable)	N/A

Remark: Peak Gains include all system losses (connector, cable, etc)

Cable Specifications

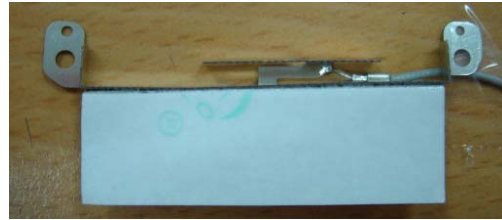
Cable Parameters	WLAN antenna		
	LCD Side	Base Side	Total
Length (mm)	N/A	N/A	663
Loss (Including Connectors) (dB, 2GHz)			1.63 dB
Loss (Including Connectors) (dB, 5GHz)			2.75 dB
Description (Color, Diameter, Manufacturer)	Color: gray OD: 1.13 low loss GBE		

2. Antenna Assembly

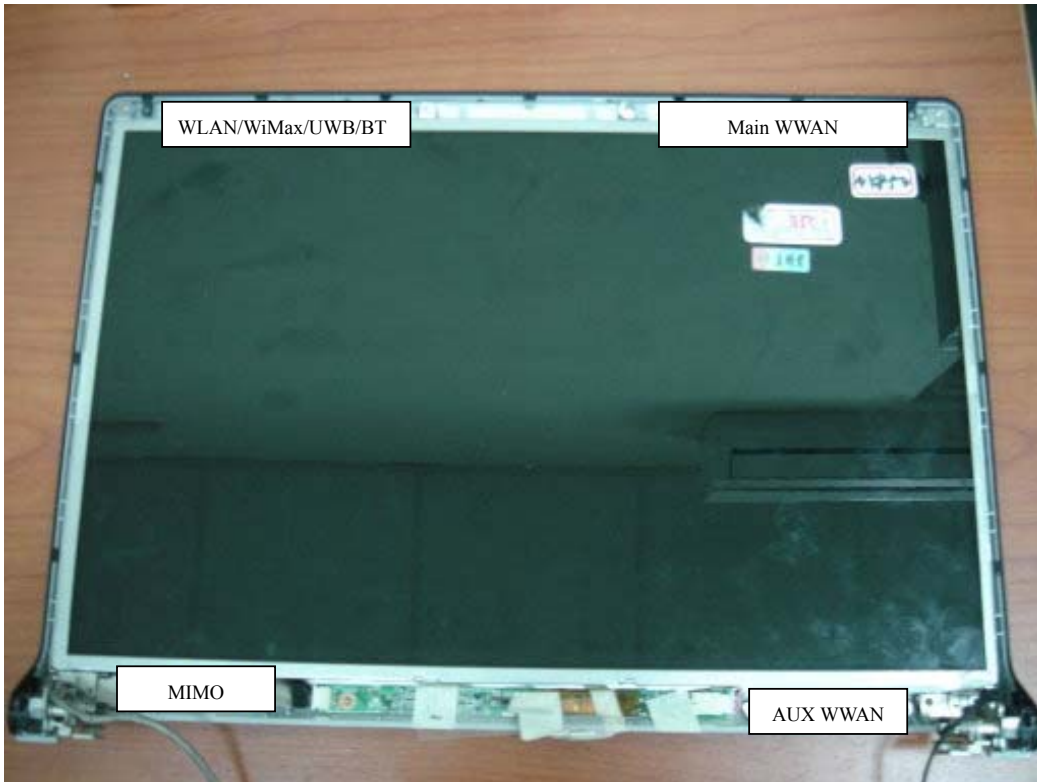
WLAN/WiMax Main & AUX



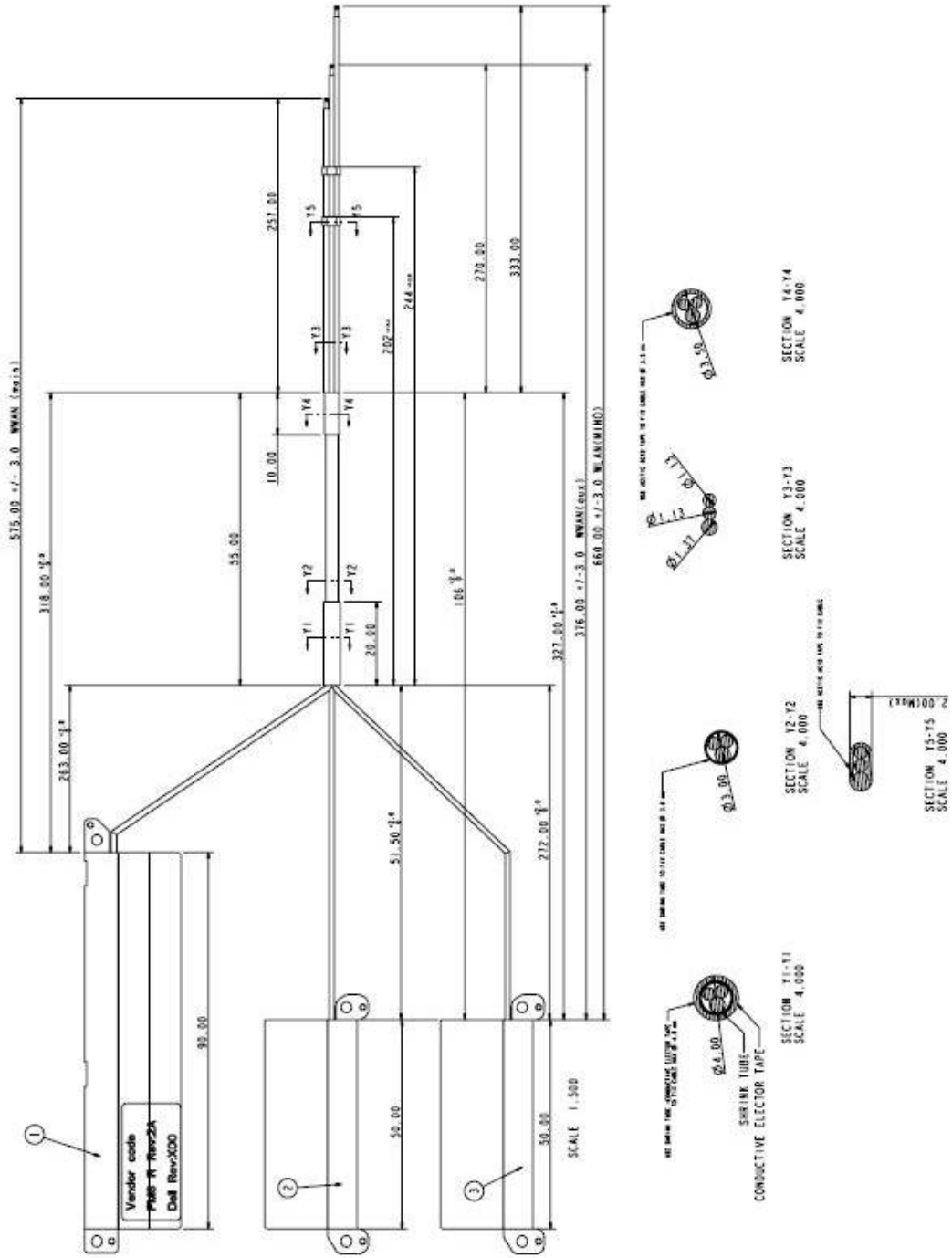
WLAN MIMO



3. Antenna Assembly Installed in The Notebook

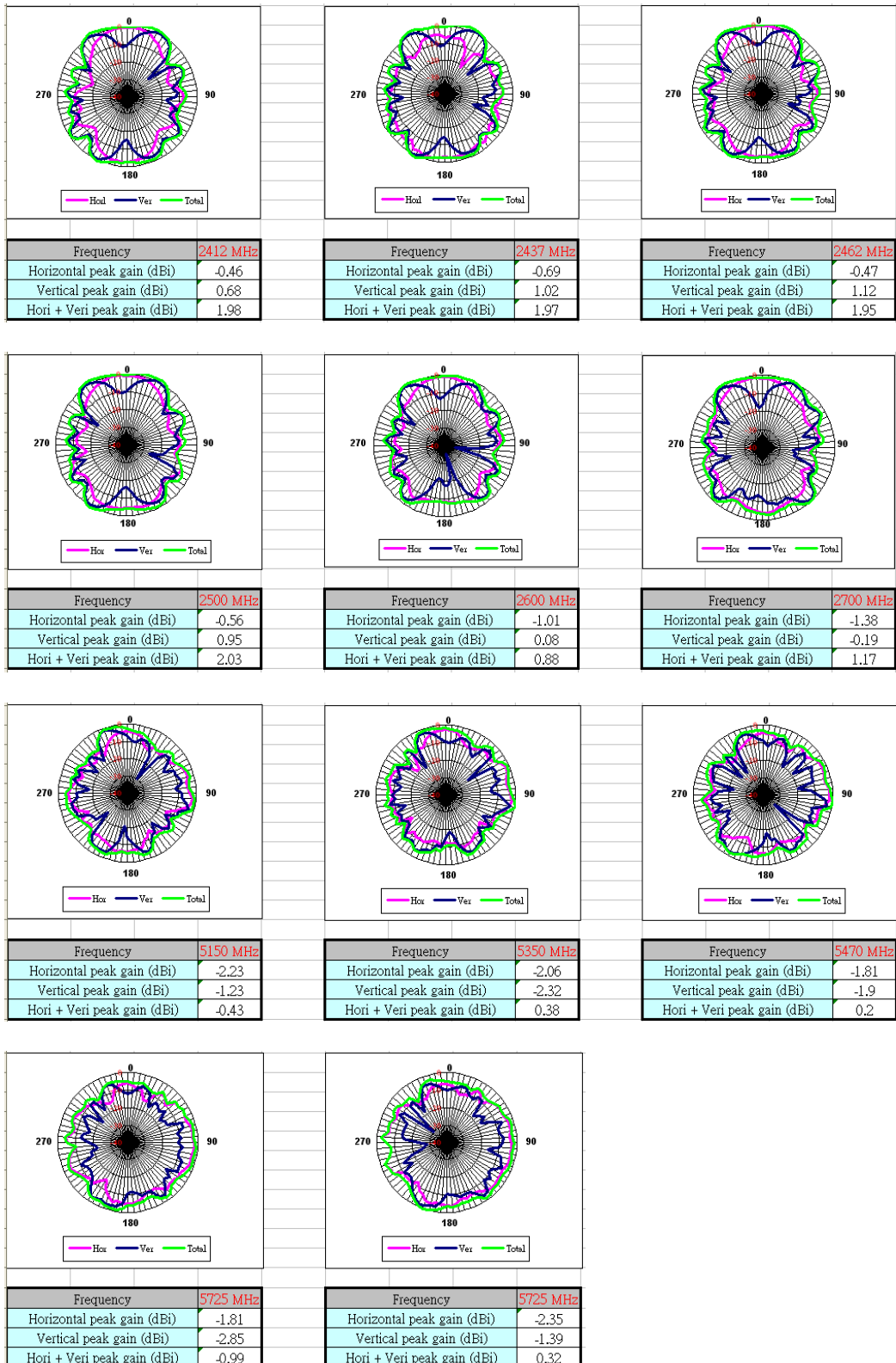


WLAN MIMO

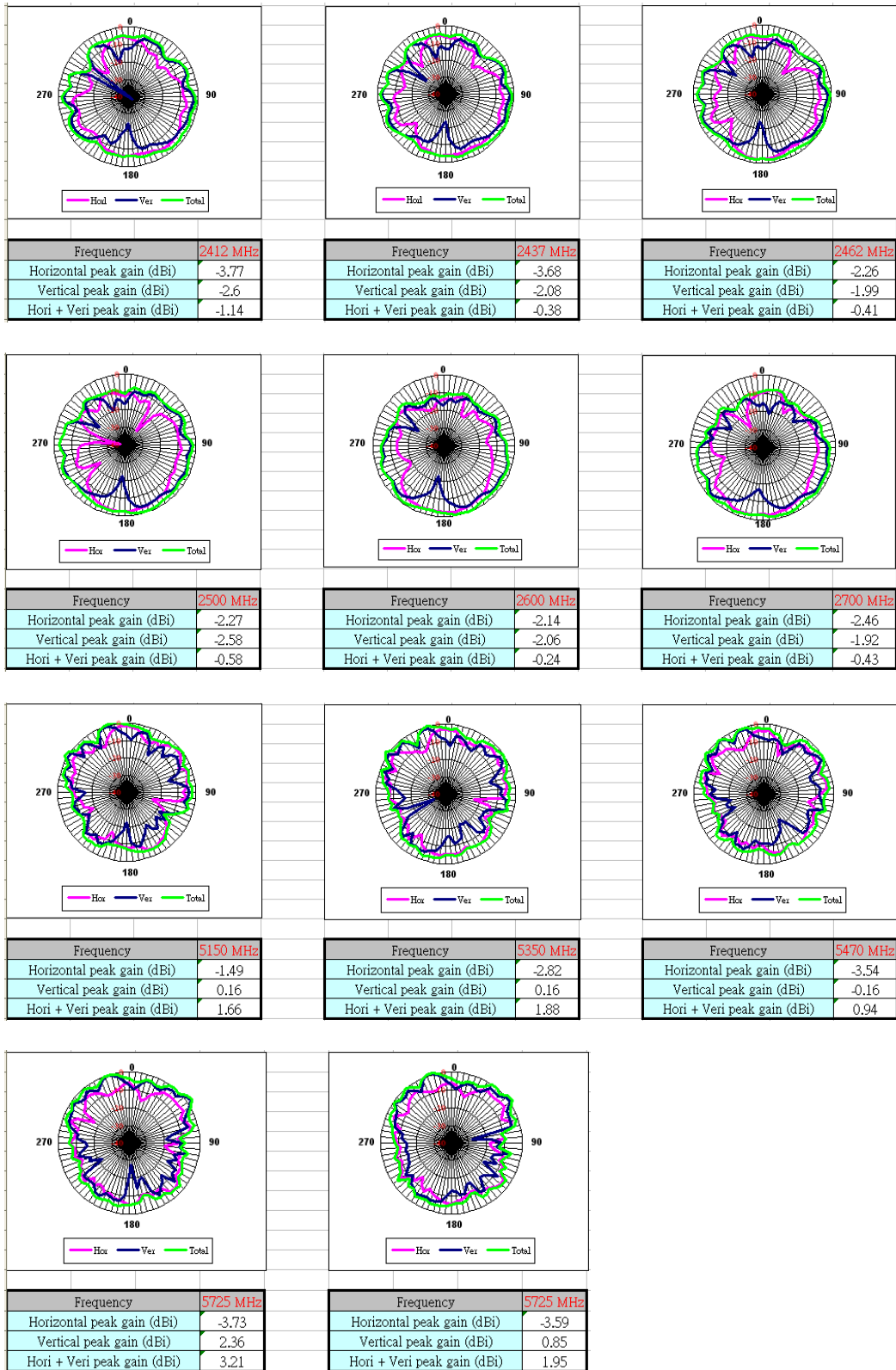


5. Gain Patterns

- WLAN + WiMax (MAIN):



- WLAN + WiMax (AUX):



- WLAN MIMO

