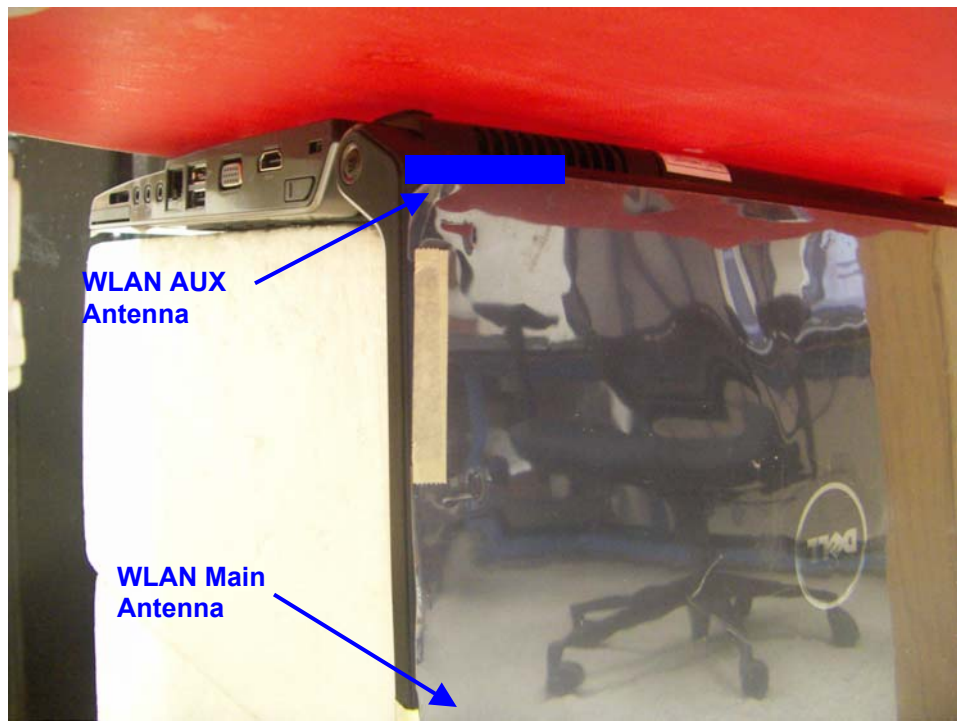


8 SAR MEASUREMENT RESULTS

Note: The Main antenna was not tested due to large separation distance between the antenna and phantom.



Channel	f (MHz)	Measured SAR 1g (mW/g)	Power Drift (dB)	Extrapolated ¹⁾ SAR 1g (mW/g)
802.11b (1Mbps) - Amphotel Antenna				
6	2437	0.057	0.000	0.057
802.11b (1Mbps) - Acon Antenna				
6	2437	0.283	-0.104	0.290
802.11b (1Mbps) - SmartAnt Antenna				
6	2437	0.083	-0.010	0.083

Notes:

- 1) The exact method of extrapolation is $\text{Measured SAR} \times 10^{(-\text{drift}/10)}$. The SAR reported at the end of the measurement process by the DASY4 system can be scaled up by the Power drift to determine the SAR at the beginning of the measurement process.
- 2) The SAR measured at the middle channel for this configuration is at least 3 dB lower (0.8 mW/g) than SAR limit (1.6 mW/g), thus testing at low & high channel is optional.
- 3) Please see attachments for the detailed measurement data and plots showing the maximum SAR location of the EUT.

12 PHOTOS

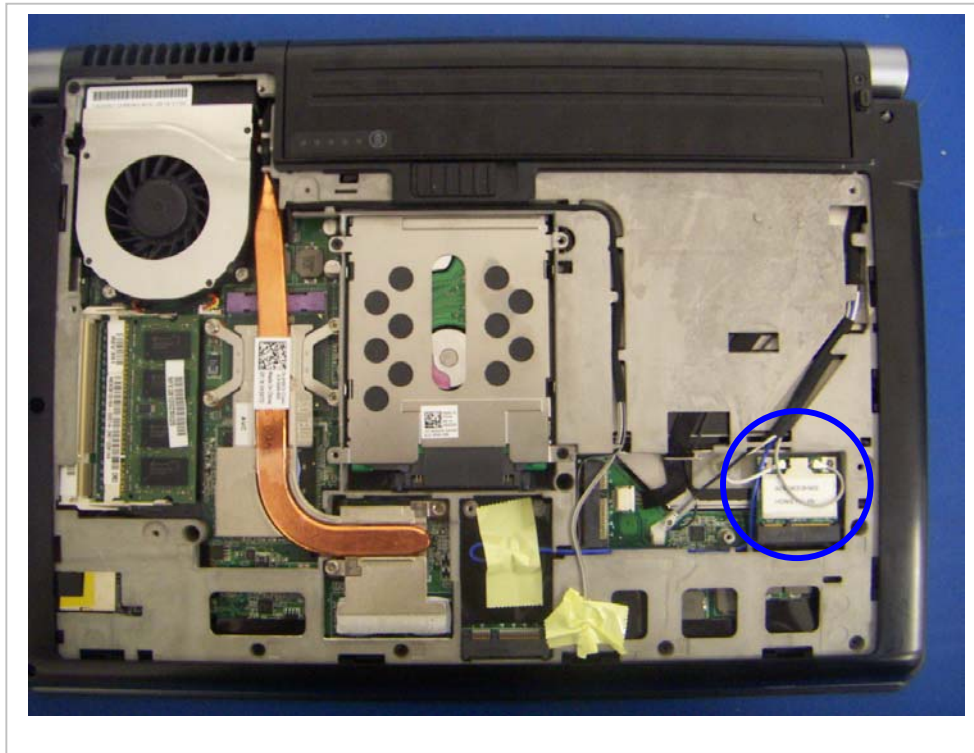
EUT Front



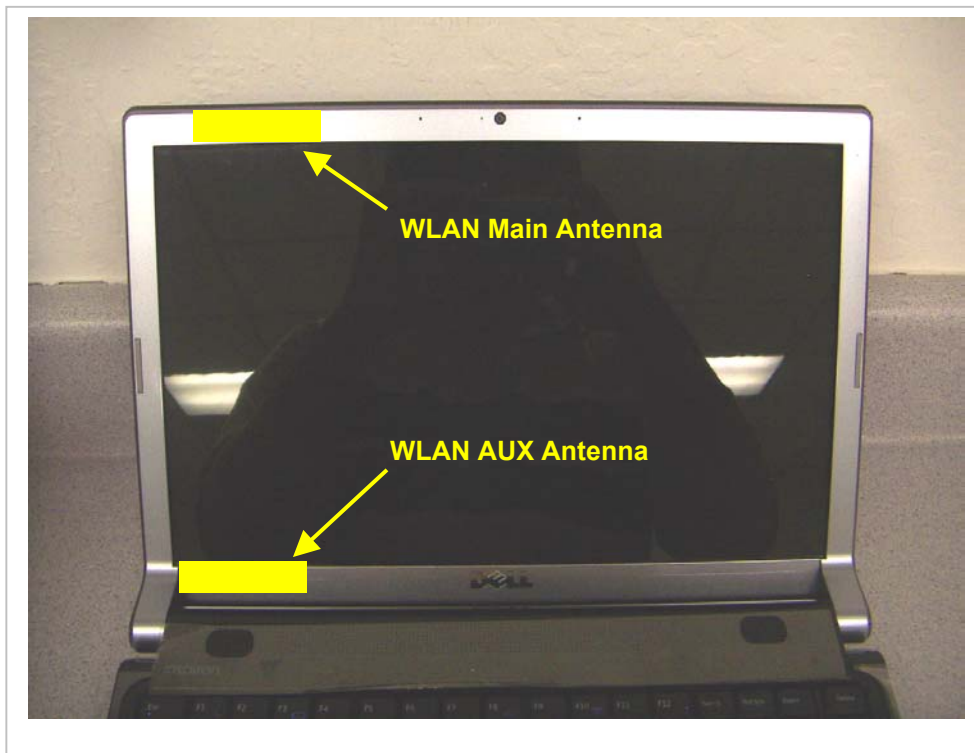
EUT Back



EUT Location



Antenna Location



END OF REPORT