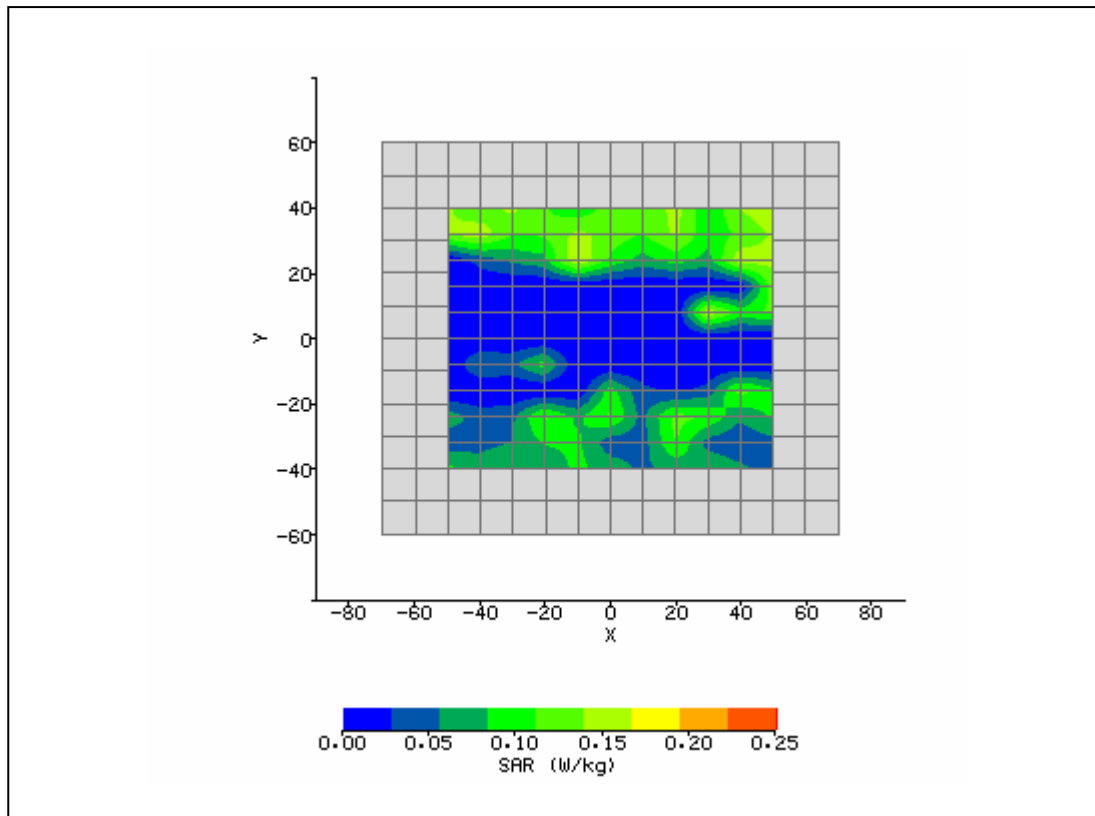


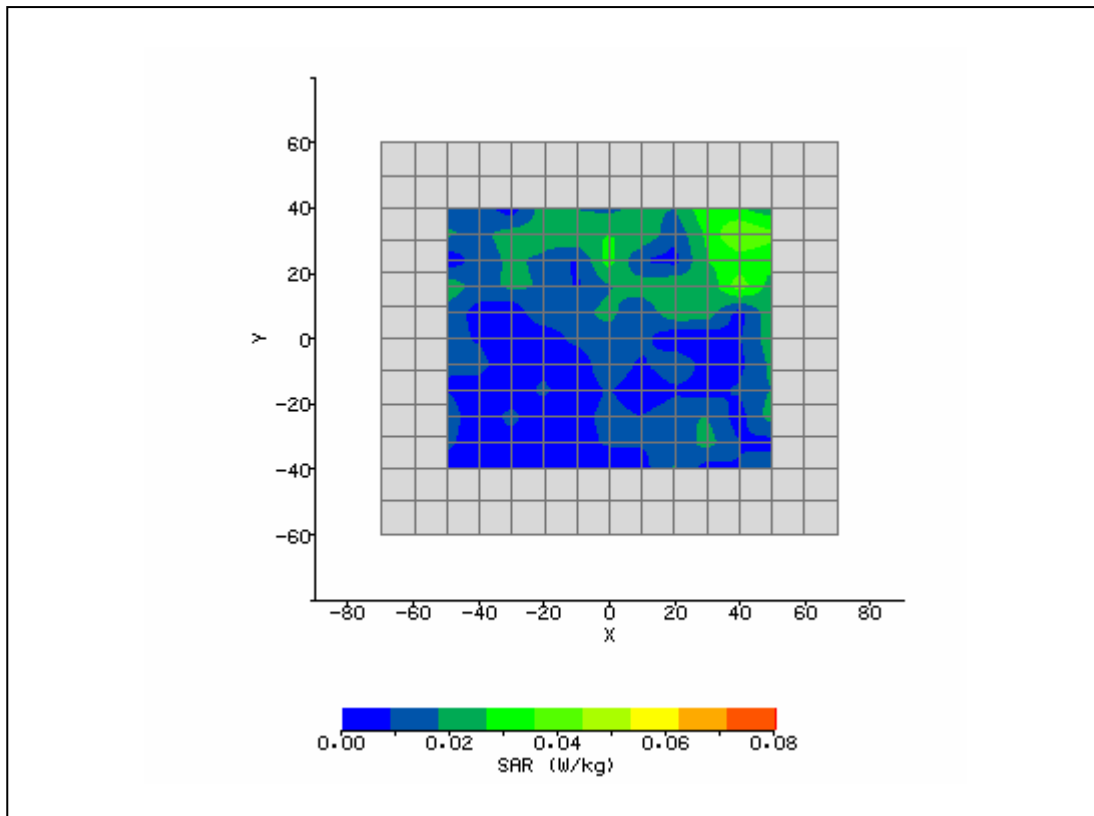
PLOT 1

System / software:	SARA2 / 2.54 VPM coloc	Input Power Drift:	
Date / Time:	7/18/2009 11:58:36 AM	DUT Battery Model/No:	
Filename:	2437_main.txt	Probe Serial Number:	M0024
Ambient Temperature:	22.0°C	Liquid Simulant:	2450
Device Under Test:	Broadcom Gucci	Relative Permittivity:	49.33
Relative Humidity:	45%	Conductivity:	1.958
Phantom S/No:	Head04_37.csv	Liquid Temperature:	22.0°C
Phantom Rotation:	0°	Max SAR X-axis Location:	50.00 mm
DUT Position:	Lap	Max SAR Y-axis Location:	40.00 mm
Antenna Configuration:	Internal Main	Max E Field:	10.85 V/m
Test Frequency:	2437MHz	SAR 1g:	0.183 W/kg
Air Factors:	2573 / 2262 / 2365	SAR 10g:	
Conversion Factors:	.487 / .487 / .487	SAR Start:	0.135 W/kg
Type of Modulation:		SAR End:	0.130 W/kg
Modn. Duty Cycle:		SAR Drift during Scan:	-4.21 %
Diode Compression Factors (V*200):	20 / 20 / 20	Probe battery last changed:	07/18/09
Input Power Level:	Set by software	Extrapolation:	poly4



PLOT 2

System / software:	SARA2 / 2.54 VPM coloc	Input Power Drift:	
Date / Time:	7/18/2009 2:55:39 PM	DUT Battery Model/No:	
Filename:	2437_aux.txt	Probe Serial Number:	M0024
Ambient Temperature:	22.0°C	Liquid Simulant:	2450
Device Under Test:	Broadcom Gucci	Relative Permittivity:	49.33
Relative Humidity:	45%	Conductivity:	1.958
Phantom S/No:	Head04_37.csv	Liquid Temperature:	22.0°C
Phantom Rotation:	0°	Max SAR X-axis Location:	41.00 mm
DUT Position:	Lap	Max SAR Y-axis Location:	30.40 mm
Antenna Configuration:	Internal Aux	Max E Field:	6.28 V/m
Test Frequency:	2437MHz	SAR 1g:	0.062 W/kg
Air Factors:	2573 / 2262 / 2365	SAR 10g:	
Conversion Factors:	.487 / .487 / .487	SAR Start:	0.036 W/kg
Type of Modulation:		SAR End:	0.033 W/kg
Modn. Duty Cycle:		SAR Drift during Scan:	-10.66 %
Diode Compression Factors (V*200):	20 / 20 / 20	Probe battery last changed:	07/18/09
Input Power Level:	Set by software	Extrapolation:	poly4



PLOT 3

System / software:	SARA2 / 2.54 VPM coloc	Input Power Drift:	
Date / Time:	7/18/2009 3:33:56 PM	DUT Battery Model/No:	
Filename:	2437_aux.txt	Probe Serial Number:	M0024
Ambient Temperature:	22.0°C	Liquid Simulant:	2450
Device Under Test:	System	Relative Permittivity:	49.33
Relative Humidity:	45%	Conductivity:	1.958
Phantom S/No:	Head04_37.csv	Liquid Temperature:	22.0°C
Phantom Rotation:	180°	Max SAR X-axis Location:	0.00 mm
DUT Position:	10mm	Max SAR Y-axis Location:	0.00 mm
Antenna Configuration:	Dipole	Max E Field:	151.68 V/m
Test Frequency:	2450MHz	SAR 1g:	54.742 W/kg
Air Factors:	2573 / 2262 / 2365	SAR 10g:	
Conversion Factors:	.487 / .487 / .487	SAR Start:	5.143 W/kg
Type of Modulation:		SAR End:	5.411 W/kg
Modn. Duty Cycle:		SAR Drift during Scan:	3.25 %
Diode Compression Factors (V*200):	20 / 20 / 20	Probe battery last changed:	07/18/09
Input Power Level:	1 W	Extrapolation:	poly4

