

Regulatory WLAN Antenna Information 2.45/5GHz Multiple Band Antennas with Cable & Connector For IEEE802.11b/g, UNII

(English Language Required for Intel Regulatory Review / Approval)

Platform	
Platform Owner	HP
Brand Name	HP
Model Name	Bixby
ODM	Inventec
Target Launch Date	(YYYY/ MM/ DD)
Antenna	
Brand Name	
Part Number	<input checked="" type="checkbox"/> Tx1 Antenna: IV1634-11-003
	<input checked="" type="checkbox"/> Tx2 Antenna: IV1634-11-004
	<input type="checkbox"/> Tx3 (or Rx3) Antenna (Rx3 for 4965AGN ONLY)
Module	
With WLAN Module	<input type="checkbox"/> WM3B2200BG
(Check Box)	<input type="checkbox"/> WM3B2915ABG
	<input type="checkbox"/> WM3945ABG
	<input type="checkbox"/> 4965AGN
	<input type="checkbox"/> 4965AG_
	<input type="checkbox"/> 533ANX Family
	<input type="checkbox"/> 512ANX Family
	<input type="checkbox"/> 533AN Family
	<input type="checkbox"/> 512AN Family
	<input checked="" type="checkbox"/> Demi (BRCM1030)

Antenna Sample / Antenna Data Requirements for worldwide regulatory approval

Section	Description of Required OEM / ODM Antenna Information	US / IC	EU	Japan	Taiwan	S.Korea
1A	Part Number for Antenna only	Required	Required	Required	Required	Required
1B	Antenna Manufacturer Name	Required	Required	Required	Required	Required
1C	Description of Antenna Type	Required	N/A	N/A	N/A	N/A
1D	Part number of Antenna Assembly / cable impedance, length & diameter.	Required	Desired	Desired	Desired	Desired
1E	Tx1, Tx2 & Tx3 antenna (Peak Gain W/ cable loss) *	Required	Required	Required	Required	Required
	1E OR 1F, 1G, 1H					
1F	Tx1, Tx2 & Tx3 antenna (Peak Gain only) *	Required	Required	Required	Required	Required
1G	VSWR of cable including connector	Required	Required	Required	Required	Required
1H	Tx1, Tx2 & Tx3 antenna (Cable loss W/ connector) *	Required	Required	Required	Required	Required
2	Dimensioned Photographs and Drawings of Tx1, Tx2, and Tx3 (or Rx3) antennas	Required	Required	Required	Required	Required
3	Radiation patterns of antennas loaded in the host platform.	Required	Desired	Required	N/A	Required
4	Platform model name / number - correlated to antenna manufacturer and antenna part number	Required	Required	Desired	Required	Desired
5	Photograph(s) or Drawings showing location of antennas in platform. (S. Korea requires photographs of antennas for approval submission). Taiwan requires pictures of each antenna type shown in the system.	Required	Required	Desired	Required (Photos)	Required (Photos)
6	Mech. drawings / photos with dimensions of antenna locations and distance from end-user (For evaluation of SAR testing requirement).	Required	N/A	N/A	N/A	N/A
7	Photograph(s) or Drawings showing the location of all antennas (WLAN, other) and distance between those transmitting antennas. Information will be used to evaluate whether co-location testing is required.	Required	N/A	N/A	N/A	N/A
8	Local representative contact information for LMA/ PARS process.	Required	N/A	N/A	N/A	N/A

NOTE:

(*) if 3rd antenna is Rx only (e.g. receive only for 4965AGN) then peak gain and cable loss not required

Antenna Information

Section 1. Antenna Assembly Specifications

Antenna Assembly Summary:

1A Antenna Part Number	1B Manufacture	1C Antenna Type	1D Cable Assembly Part Number and Information	1E Peak Gain W/ Cable loss (dBi)	1F Peak Gain w/o Cable Loss (dBi)	1G VSWR	1H Cable Loss (dBi)
IV1634-11-003	Amphenol Taiwan Corporation	IFA	Cable: HOKO RF1.13N2 Shin Din SPH 50 ohm Coaxial. length: 420mm diameter:1.13mm Connector: IPEX 20278-111R Technova 7000AC	2400-2500MHz -0.29 dBi (peak)	2400-2500MHz 0.64 dBi (peak)	2400-2500MHz 1.14 max	2400-2500MHz 0.93 dBi (peak)
				5150-5350MHz -2.21 dBi (peak)	5150-5350MHz -0.58 dBi (peak)	5150-5350MHz 1.43 max	5150-5350MHz 1.63 dBi (peak)
				5470-5725MHz -0.04 dBi (peak)	5450-5850MHz 1.68 dBi (peak)	5450-5850MHz 2.23 max	5450-5850MHz 1.72 dBi (peak)
				5725-5850MHz -1.11 dBi (peak)	5725-5850MHz 0.74 dBi (peak)	5725-5850MHz 2.4 max	5725-5850MHz 1.85 dBi (peak)
IV1634-11-004	Amphenol Taiwan Corporation	IFA	Cable: HOKO RF1.13N2 Shin Din SPH 50 ohm Coaxial. length: 545mm diameter:1.13mm Connector: IPEX 20278-111R Technova 7000AC	2400-2500MHz 0.25 dBi (peak)	2400-2500MHz 1.52 dBi (peak)	2400-2500MHz 1.42 max	2400-2500MHz 1.27 dBi (peak)
				5150-5350MHz -2.4 dBi (peak)	5150-5350MHz -0.09 dBi (peak)	5150-5350MHz 1.51 max	5150-5350MHz 2.31 dBi (peak)
				5470-5725MHz -1.88 dBi (peak)	5470-5725MHz 0.73 dBi (peak)	5470-5725MHz 1.43 max	5470-5725MHz 2.61 dBi (peak)
				5725-5850MHz -2.01 dBi (peak)	5725-5850MHz 0.64 dBi (peak)	5725-5850MHz 1.9 max	5725-5850MHz 2.65 dBi (peak)

NOTE:d

(1) If Rx3 only (3rd antenna receives only, e.g. for 4965AGN) then the information marked with * is not required

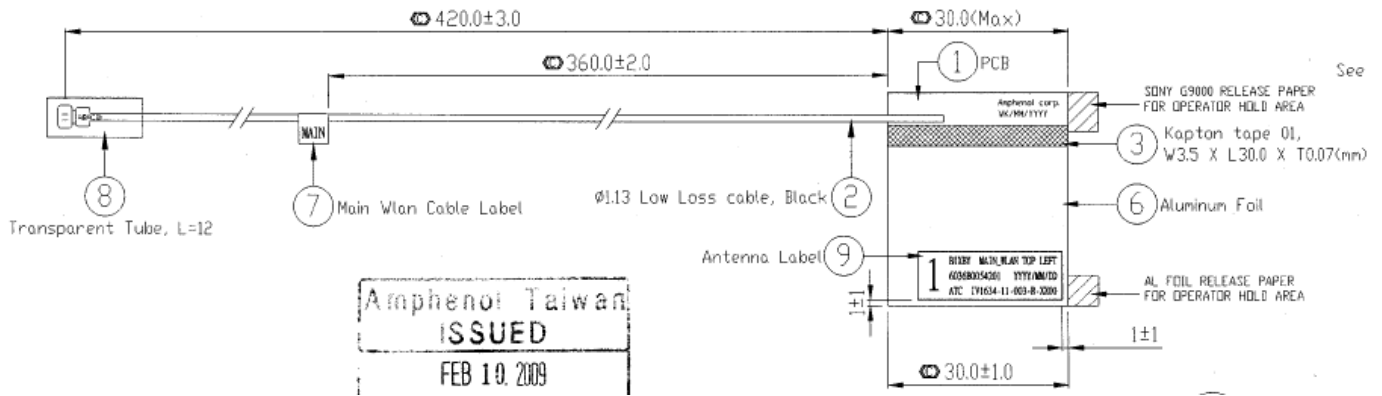
Antenna Peak Gain Table:

Frequency (MHz)	Tx1 antenna		Tx2 Antenna	
	Horizontal (dBi)	Vertical (dBi)	Horizontal (dBi)	Vertical (dBi)
2400	-0.55	-2.23	0.25	-1.61
2450	-0.29	-1.14	0.03	-2.55
2500	-0.95	-1.05	-1.44	-3.41
5150	-2.21	-4.86	-3.22	-2.64
5250	-3.06	-3.5	-2.89	-2.4
5350	-4.09	-4.17	-3.59	-3.13
5470	-2.8	-2.67	-2.84	-1.88
5600	-2.36	-0.04	-3.04	-2.99
5725	-3.77	-2.15	-2.76	-4.38
5850	-1.11	-2.1	-2.1	-2.01

- Antenna Peak Gain required being test in system basis.
- 1E frame contend absolutely peak antenna gain include H/V
- If Rx3 only (3rd antenna receives only, e.g. for 4965AGN) then the information is not required for Rx3.

Section 2. Dimensioned Photos or Drawings of Antennas

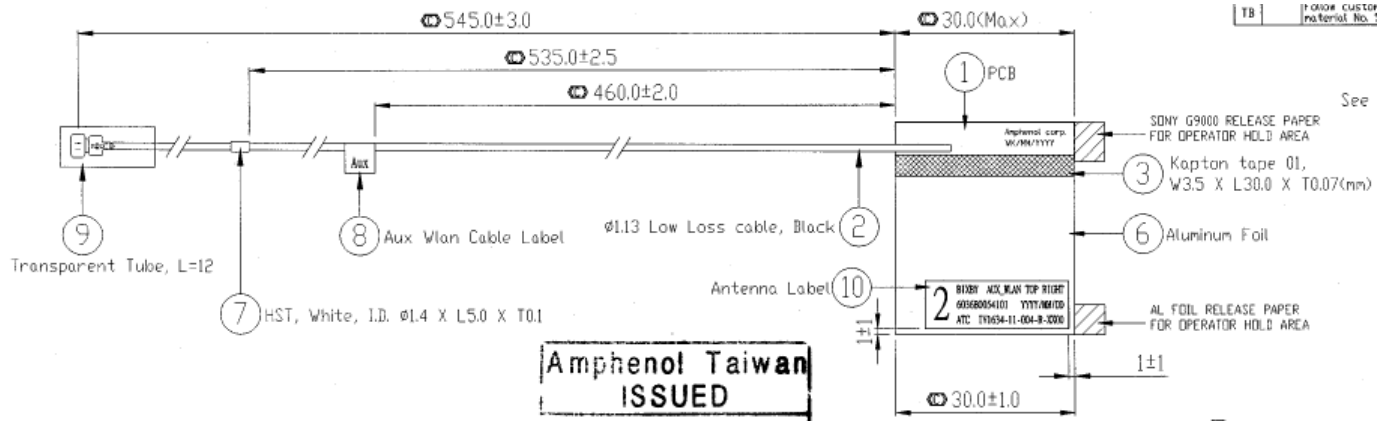
Tx1 Antenna Dimensioned Drawing:



Tx1 Antenna Photo:



Tx2 Antenna Dimensioned Drawing:



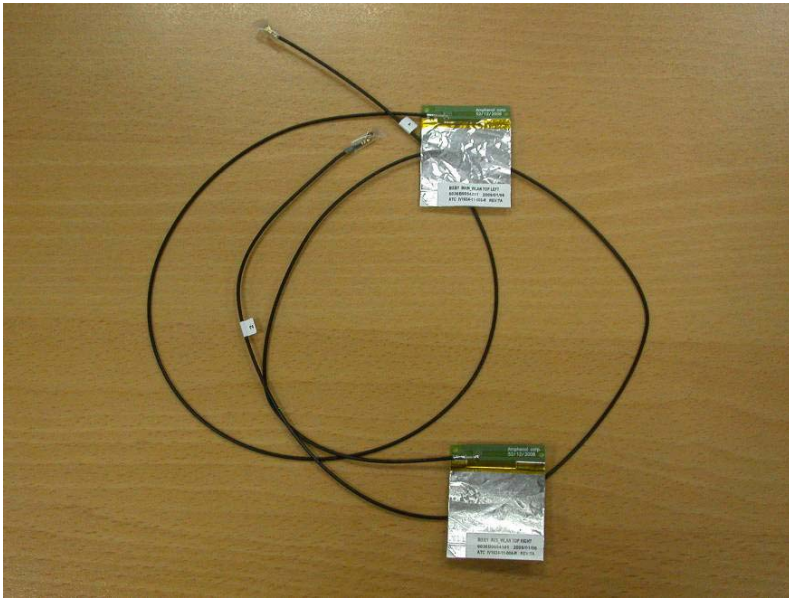
Tx2 Antenna Photo:



Include front view photo of all 3 antennas here.

Antenna Manufacturer: Amphenol

Antenna Part Number: **IV1634-11-003** (Tx1), **IV1634-11-004** (Tx2 or Rx2)



Include back view photo of all 3 antennas here.

Antenna Manufacturer: Amphenol

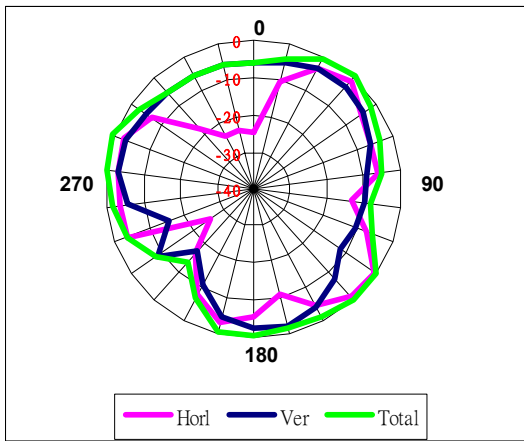
Antenna Part Number: **IV1634-11-003** (Tx1), **IV1634-11-004** (Tx2 or Rx2)



Section 3. Radiation characteristics of antennae Loaded in Host Platform

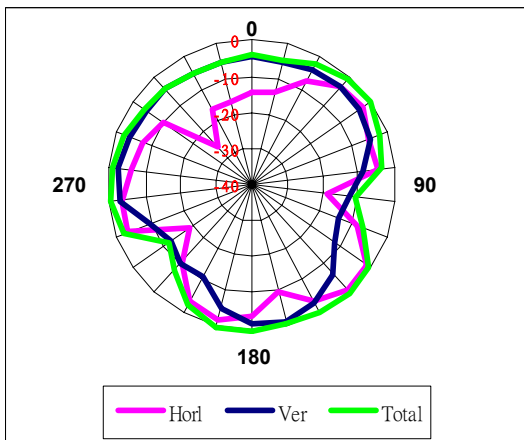
2400-2500MHz radiation characteristic

Tx1 antenna: 2400 MHz



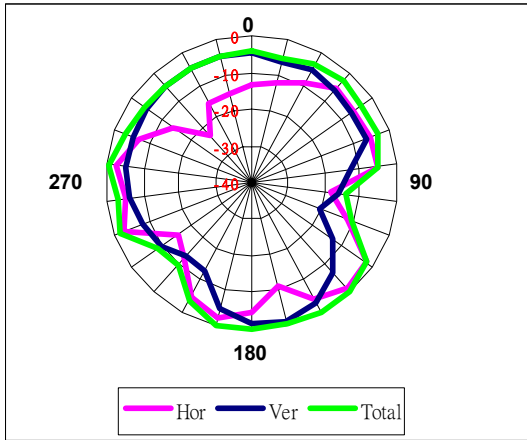
Frequency	2400 MHz
Horizontal peak gain (dBi)	-0.55
Vertical peak gain (dBi)	-2.23
Hori + Veri peak gain (dBi)	0.93

Tx1 antenna: 2450 MHz



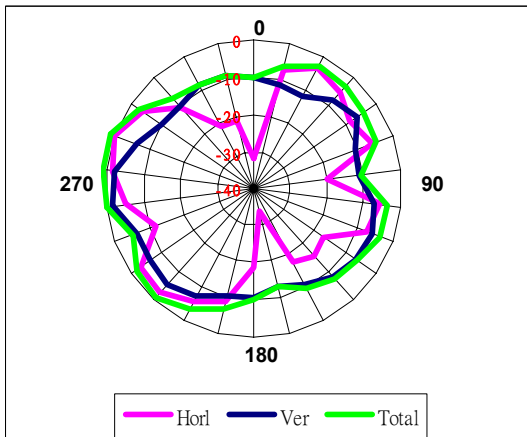
Frequency	2450 MHz
Horizontal peak gain (dBi)	-0.29
Vertical peak gain (dBi)	-1.14
Hori + Veri peak gain (dBi)	0.57

Tx1 antenna: 2500 MHz



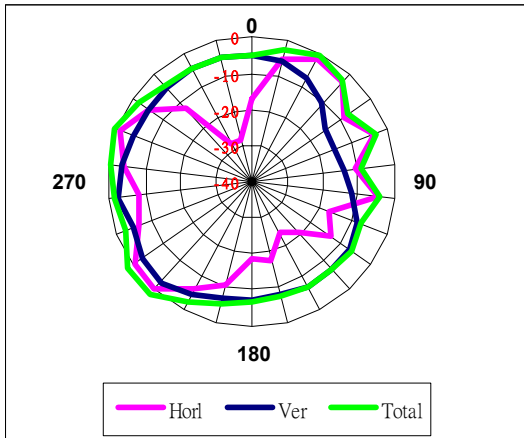
Frequency	2500 MHz
Horizontal peak gain (dBi)	-0.95
Vertical peak gain (dBi)	-1.05
Hori + Veri peak gain (dBi)	0.16

Tx2 antenna: 2400 MHz



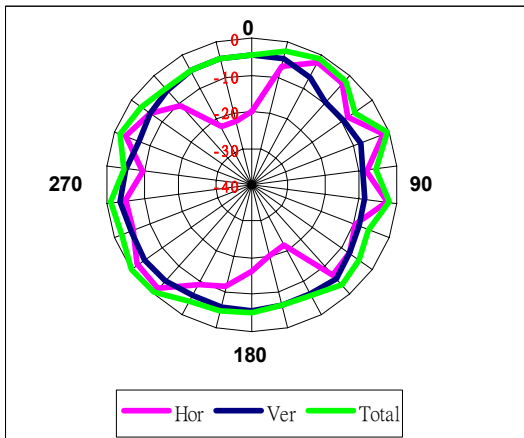
Frequency	2400 MHz
Horizontal peak gain (dBi)	0.25
Vertical peak gain (dBi)	-1.61
Hori + Veri peak gain (dBi)	1.13

Tx2 antenna: 2450 MHz



Frequency	2450 MHz
Horizontal peak gain (dBi)	0.03
Vertical peak gain (dBi)	-2.55
Hori + Veri peak gain (dBi)	1.95

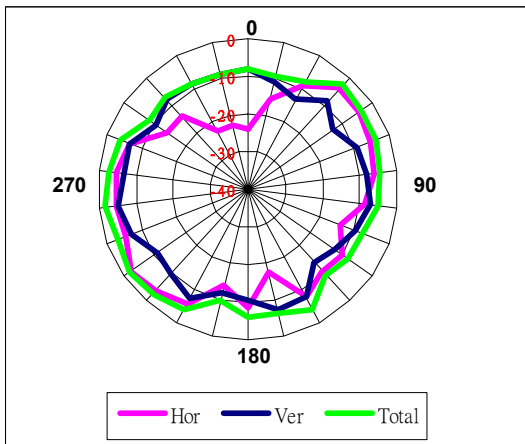
Tx2 antenna: 2500 MHz



Frequency	2500 MHz
Horizontal peak gain (dBi)	-1.44
Vertical peak gain (dBi)	-3.41
Hori + Veri peak gain (dBi)	0.05

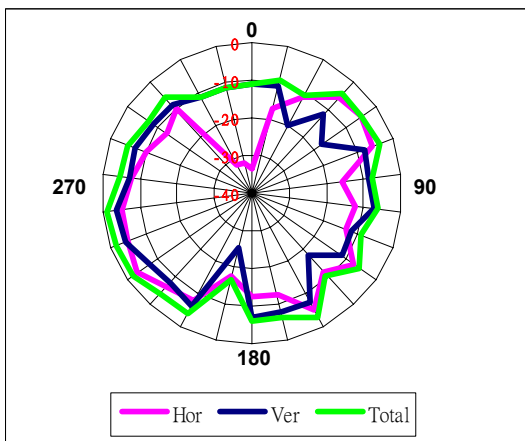
5150-5350 MHz radiation characteristic

Tx1 antenna: 5150 MHz



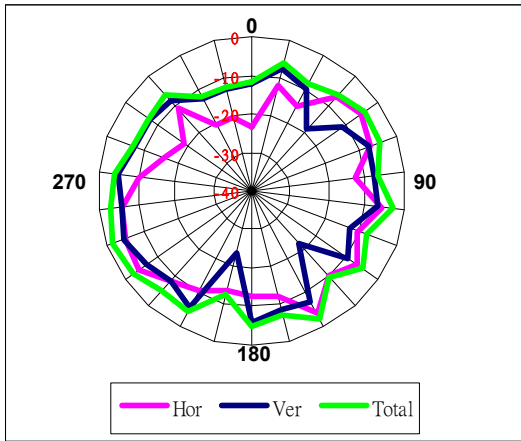
Frequency	5150(MHz)
Horizontal peak gain (dBi)	-2.21
Vertical peak gain (dBi)	-4.86
Hori + Veri peak gain (dBi)	-1.6

Tx1 antenna: 5250 MHz



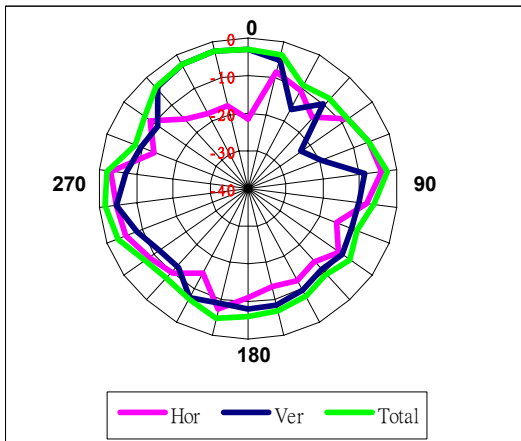
Frequency	5250(MHz)
Horizontal peak gain (dBi)	-3.06
Vertical peak gain (dBi)	-3.5
Hori + Veri peak gain (dBi)	-1.2

Tx1 antenna: 5350 MHz



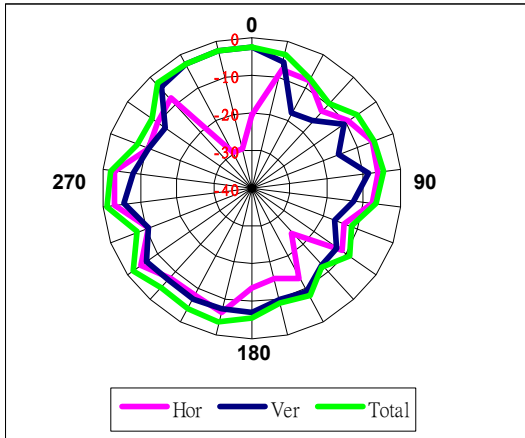
Frequency	5350(MHz)
Horizontal peak gain (dBi)	-4.09
Vertical peak gain (dBi)	-4.17
Hori + Veri peak gain (dBi)	-1.53

Tx2 antenna: 5150 MHz



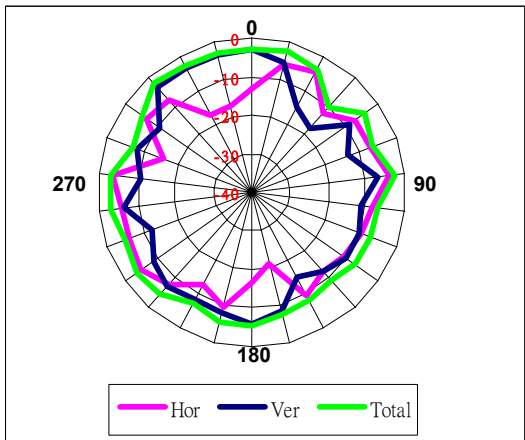
Frequency	5150(MHz)
Horizontal peak gain (dBi)	-3.22
Vertical peak gain (dBi)	-2.64
Hori + Veri peak gain (dBi)	-1.42

Tx2 antenna: 5250 MHz



Frequency	5250(MHz)
Horizontal peak gain (dBi)	-2.89
Vertical peak gain (dBi)	-2.4
Hori + Veri peak gain (dBi)	-0.99

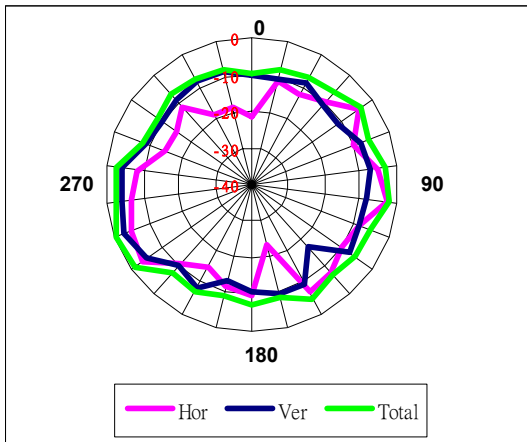
Tx2 antenna: 5350 MHz



Frequency	5350(MHz)
Horizontal peak gain (dBi)	-3.59
Vertical peak gain (dBi)	-3.13
Hori + Veri peak gain (dBi)	-2.1

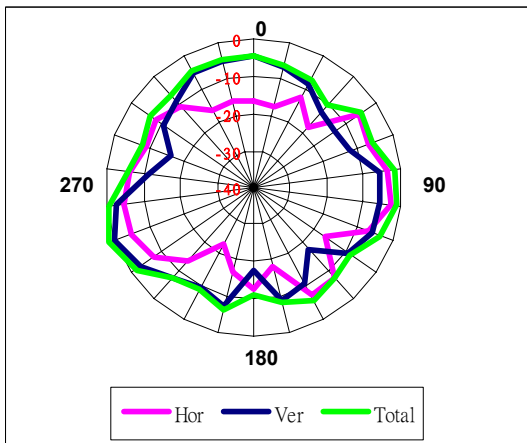
5450-5850MHz radiation characteristic

Tx1 antenna: 5450 MHz



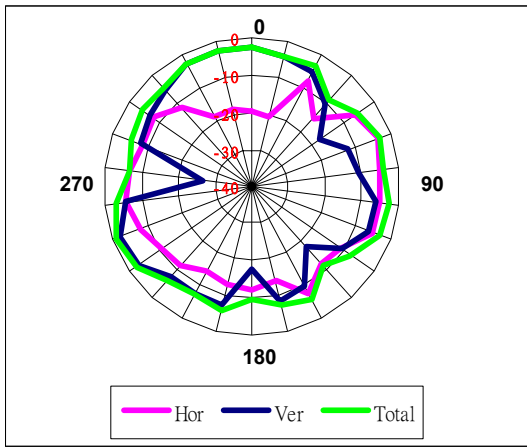
Frequency	5470(MHz)
Horizontal peak gain (dBi)	-2.8
Vertical peak gain (dBi)	-2.67
Hori + Veri peak gain (dBi)	-0.43

Tx1 antenna: 5550 MHz



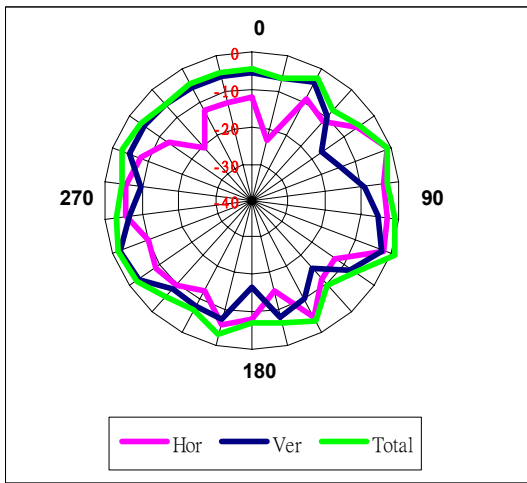
Frequency	5600(MHz)
Horizontal peak gain (dBi)	-2.36
Vertical peak gain (dBi)	-0.04
Hori + Veri peak gain (dBi)	1.34

Tx1 antenna: 5750MHz



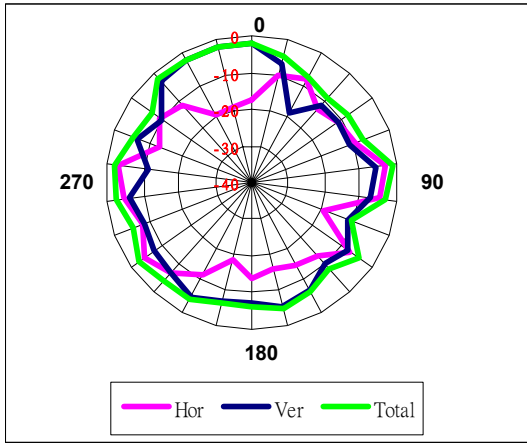
Frequency	5725(MHz)
Horizontal peak gain (dBi)	-3.77
Vertical peak gain (dBi)	-2.15
Hori + Veri peak gain (dBi)	-1.11

Tx1 antenna: 5850 MHz



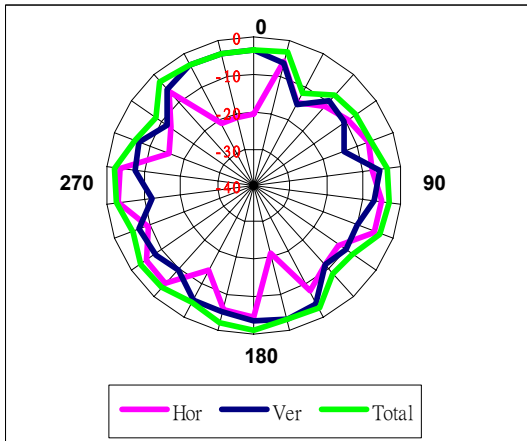
Frequency	5850(MHz)
Horizontal peak gain (dBi)	-1.11
Vertical peak gain (dBi)	-2.1
Hori + Veri peak gain (dBi)	0.83

Tx2 antenna: 5450 MHz



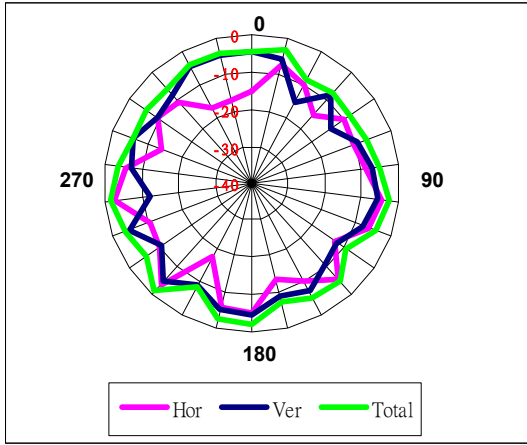
Frequency	5470(MHz)
Horizontal peak gain (dBi)	-2.84
Vertical peak gain (dBi)	-1.88
Hori + Veri peak gain (dBi)	-1.23

Tx2 antenna: 5550 MHz



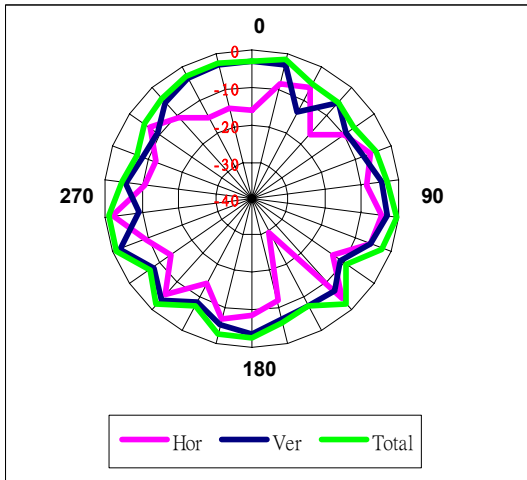
Frequency	5600(MHz)
Horizontal peak gain (dBi)	-3.04
Vertical peak gain (dBi)	-2.99
Hori + Veri peak gain (dBi)	-1.07

Tx2 antenna: 5750 MHz



Frequency	5725(MHz)
Horizontal peak gain (dBi)	-2.76
Vertical peak gain (dBi)	-4.38
Hori + Veri peak gain (dBi)	-1.01

Tx2 antenna: 5850 MHz



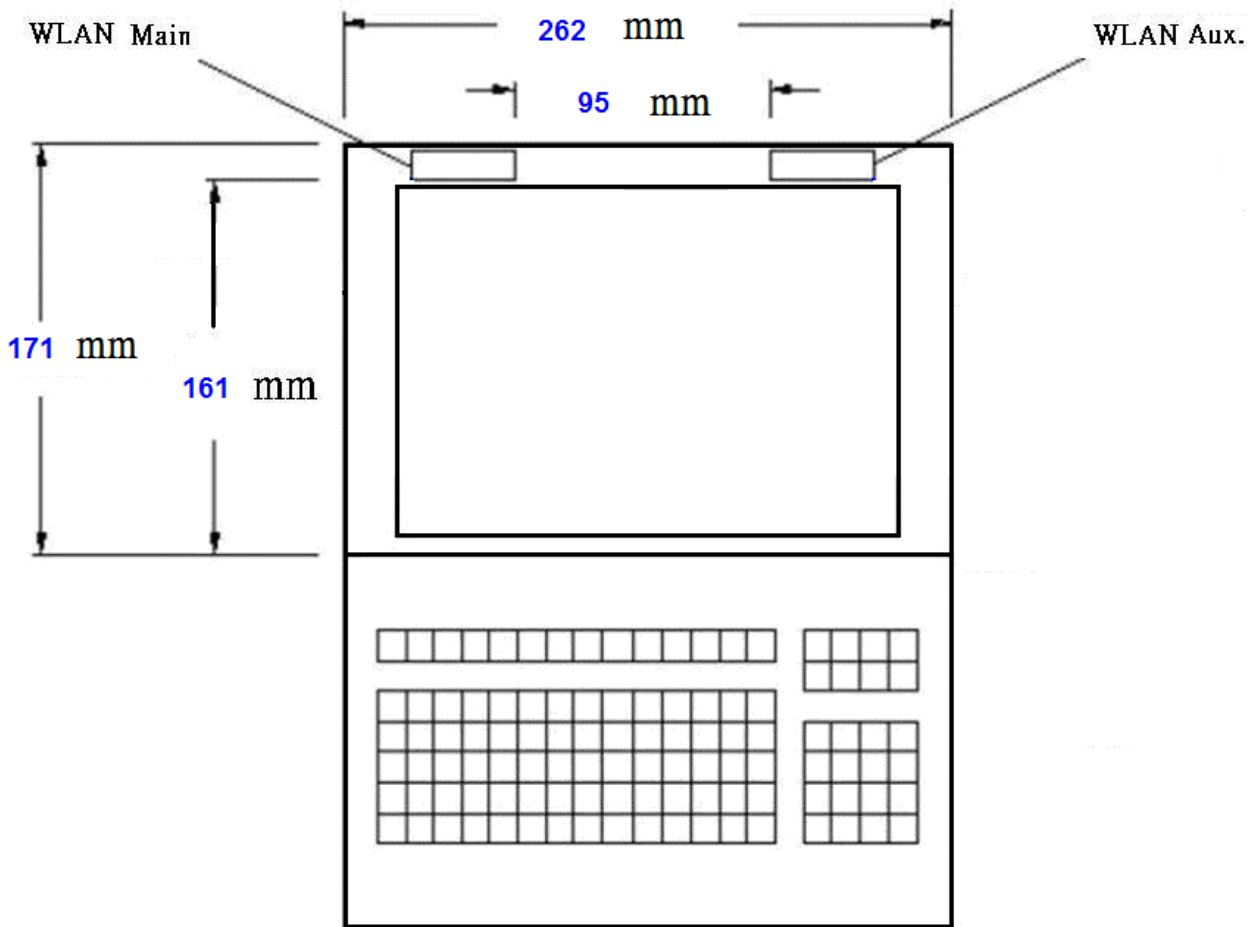
Frequency	5850(MHz)
Horizontal peak gain (dBi)	-2.1
Vertical peak gain (dBi)	-2.01
Hori + Veri peak gain (dBi)	-0.57

Section 4. Host Platform Information

OEM / ODM Host platform:

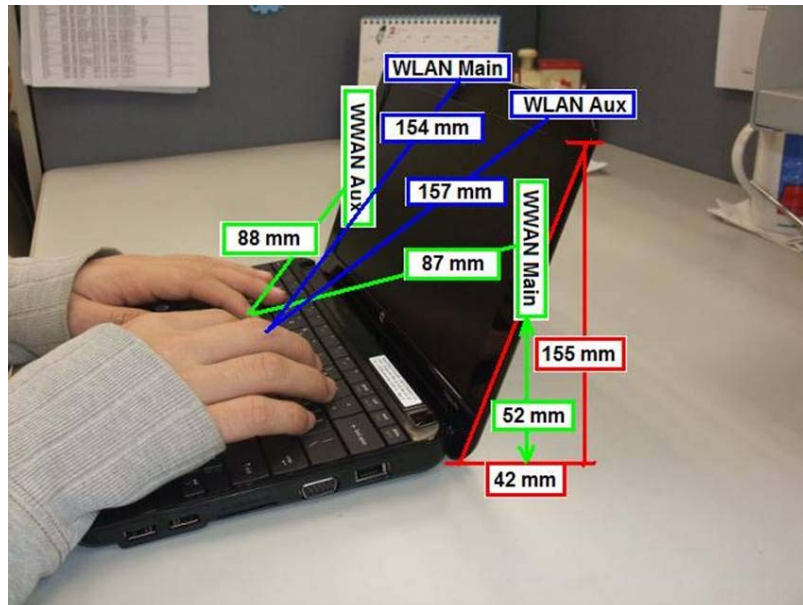
Section 5. Antenna Host Platform Location Information

Include a dimensioned photos or dimensioned drawings of main and auxiliary antenna placements.



Section 6. Antenna dimensional information for SAR evaluation

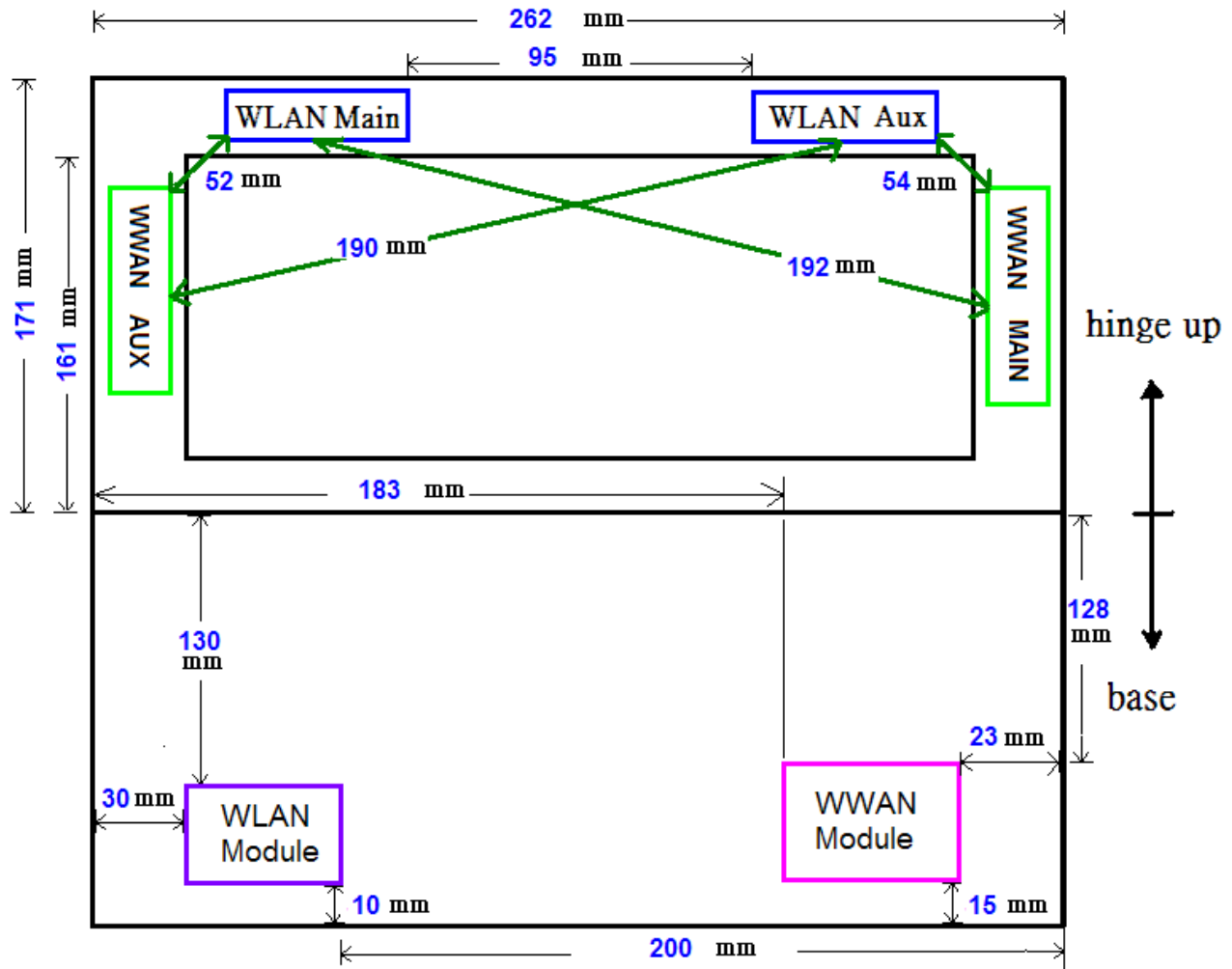
Include a dimensioned photos or dimensioned drawings showing the distance (mm) between the transmit (main) antenna and the user (excluding hands, wrist, feet, and ankle)



Section 7. Diagram Example of Co-Location Antenna Separation

Indicate distance between WLAN module antennas and Bluetooth/other radio antenna element.

(Note: Due to the evolving rules regarding co-location, each platform will need to be reviewed on a case by case basis)



Section 8. Local representative contact information

Local representative contact information is required for regulatory support for target countries below.

	Local company name	Contact name	Phone number	FAX Number	e-Mail Address	Notes
Argentina						
Brazil						
Indonesia						
Israel						
Malaysia						
Mexico						
Singapore						Telecommunication Equipment Dealer License Required
USA, Canada						