

RF Antenna Cable Assembly

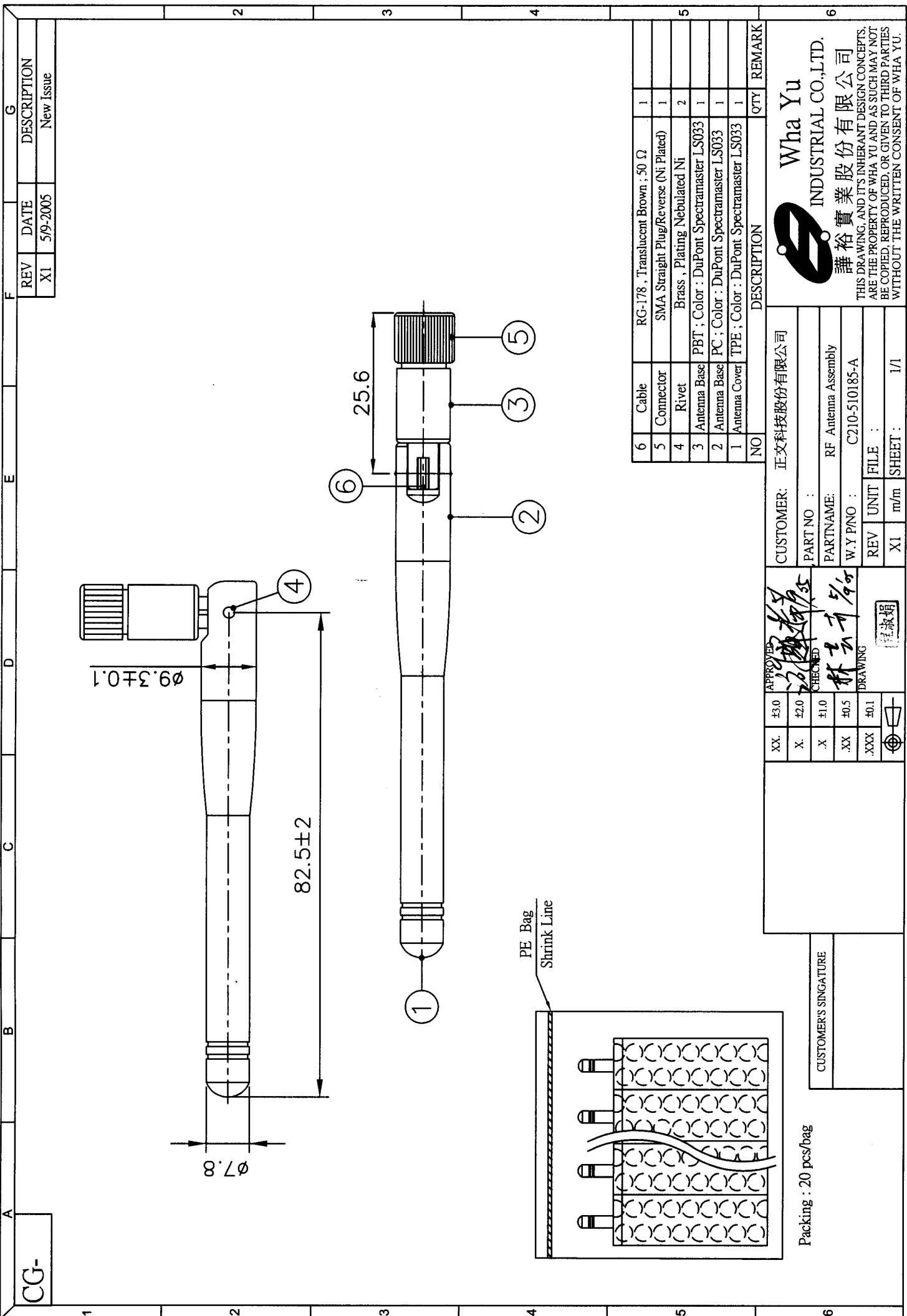
Specification


1. Electrical Properties :

- 1.1 Frequency Range..... 2.4GHz ~ 2.5GHz
- 1.2 Impedance 50Ω Nominal
- 1.3 VSWR 1.92 Max.
- 1.4 Return Loss..... -10 dB Maximum
- 1.5 Electrical Wave..... $1/2\lambda$ Dipole
- 1.6 Gain(peak)..... 1.8dBi
- 1.7 Admitted Power..... 1W




2. Physical Properties :

- 2.1 Cable..... RG-178 Coaxial Cable
- 2.2 Antenna Cover..... TPE
- 2.3 Antenna Base..... PC
- 2.4 Antenna Base..... PBT
- 2.5 Operating Temp. -20°C ~ +65°C
- 2.6 Storage Temp. -30°C ~ +75°C
- 2.7 Color White (DuPont Spectramaster LS033)
- 2.8 Connector..... SMA Plug Reverse (Plated Ni)




Wha Yu
INDUSTRIAL CO.,LTD.
講裕實業股份有限公司
THIS DRAWING, AND IT'S INHERENT DESIGN CONCEPTS, ARE THE PROPERTY OF WHA YU AND AS SUCH MAY NOT BE COPIED, REPRODUCED, OR GIVEN TO THIRD PARTIES WITHOUT THE WRITTEN CONSENT OF WHA YU.

CUSTOMER: 正文科技股份有限公司
 PART NO :
 PARTNAME: RF Antenna Assembly
 W.Y P/NO : C210-510185-A
 REV : XI
 UNIT : FILE :
 SHEET : 1/1

APPROVED: 
 CHECKED: 
 DRAWING: 
 林云开 5/9/06
 林淑娟

Packing : 20 pcs/bag
 CUSTOMER'S SIGNATURE: