

HR60 (Presario) Antenna Information for HP

Wistron NeWeb Corporation

HP HR60 Antenna Information

I. Antenna Assembly Specifications

Antenna assembly overview: Peak Gain including cable loss.

Designator	Manufacture	Antenna type	Cable Assembly Info.	Peak Gain W/ Cable loss (dBi)
Main antenna (P/N:81.EBC15.002)	WNC	Metal PIFA	(1) P/N: J12B1394-1 50 ohm Coaxial. length: 46cm diameter: 1.13mm (2) P/N:20278-101R- 13 Connector: I-PEX	2400-2500MHz 2.73 dBi(peak)
				5150-5350MHz 1.98 dBi(peak)
				5470-5825MHz 0.4 dBi(peak)
Auxiliary antenna (P/N:81.EBC15.001)	WNC	Metal PIFA	(1)P/N: J12B1394-2 50 ohm Coaxial. length: 43cm diameter: 1.13mm (2)P/N:20278-101R- 13 Connector: I-PEX	2400-2500MHz 2.97dBi (peak)
				5150-5350MHz 1.66 dBi (peak)
				5470-5825MHz 1.34 dBi (peak)

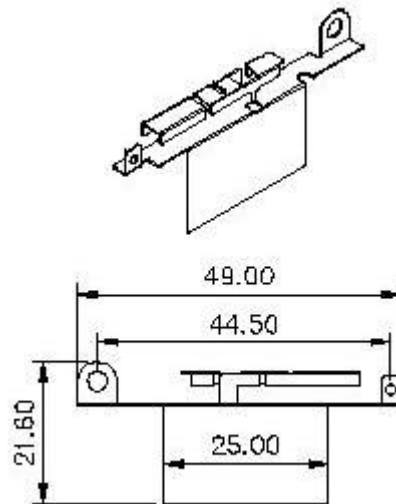
Antenna overview: Peak Gain not including cable loss.

Antenna Designator	Manufacture	Antenna type	Peak Gain w/o Cable Loss (dBi)
Main antenna (P/N:81.EBC15.002)	WNC	Metal PIFA	2400-2500MHz 4.97 dBi(peak)
			5150-5350MHz 5.35 dBi(peak)
			5470-5825MHz 3.86 dBi(peak)
Auxiliary antenna (P/N:81.EBC15.001)	WNC	Metal PIFA	2400-2500MHz 5.34dBi (peak)
			5150-5350MHz 5.22 dBi (peak)
			5470-5825MHz 5.08 dBi (peak)

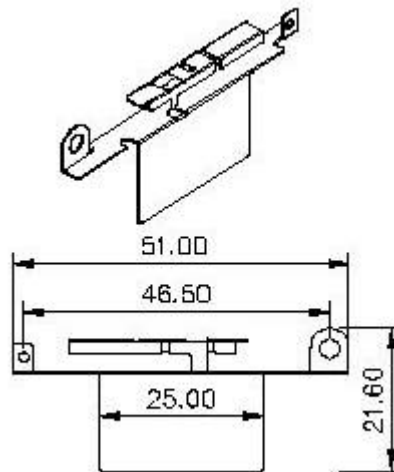
Cable assembly overview: Cable loss (including connector).

Designator	Manufacture	Cable type and length	VSWR	Cable Loss (dBi)
P/N: 50.EBC04.001 For use with the Main antenna	WNC	P/N: 50.EBC04.001 50 ohm Coaxial. length: 62cm diameter: 1.13mm Connector: I-PEX	2400-2500MHz 1.51 max	2400-2500MHz 2.24 dBi (peak)
			5150-5350MHz 1.54max	5150-5350MHz 3.33 dBi (peak)
			5470-5825MHz 1.36 max	5470-5825MHz 3.46dBi(peak)
P/N: 50.EBC05.011 For use with the Auxiliary antenna	WNC	P/N: 50.EBC05.001 50 ohm Coaxial. length: 67cm diameter: 1.13mm Connector: I-PEX	2400-2500MHz 1.41 max	2400-2500MHz 2.37 dBi (peak)
			5150-5350MHz 1.52 max	5150-5350MHz 3.56 dBi (peak)
			5470-5825MHz 1.57 max	5470-5825MHz 3.71 dBi(peak)

Antenna mechanical drawings.
A.Main antenna (Right_side antenna)



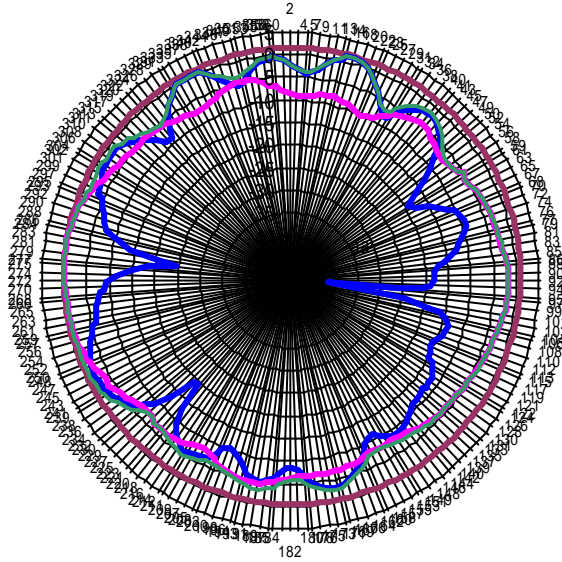
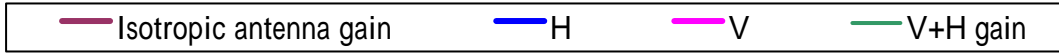
B.AUXiliary antenna(Left_side antenna)



Radiation characteristic of antennae Loaded (In Host System)

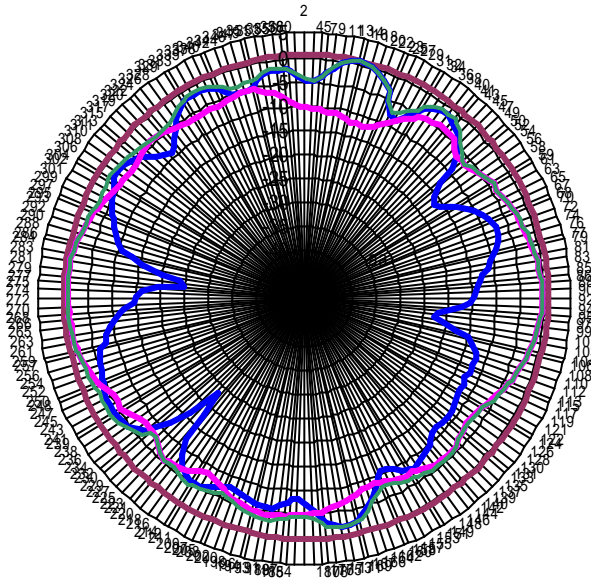
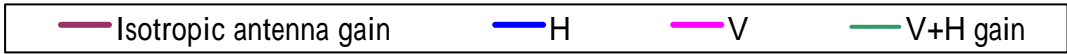
2400-2500MHz radiation characteristic

Main antenna @2.4GHz



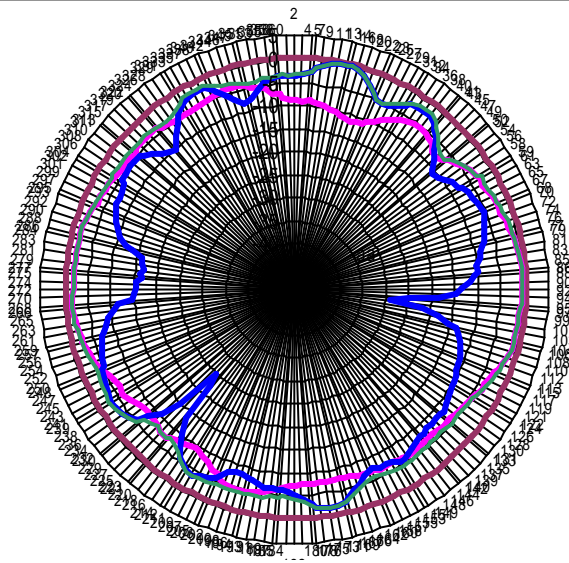
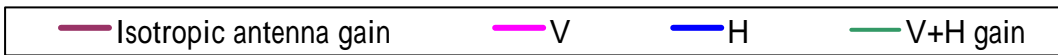
Center Frequency	2400 MHz
Horizontal (dBi) peak	0.49
Vertical (dBi) peak	-1.35
Horz+Vert (dBi) peak	0.5

Main antenna @2.45GHz



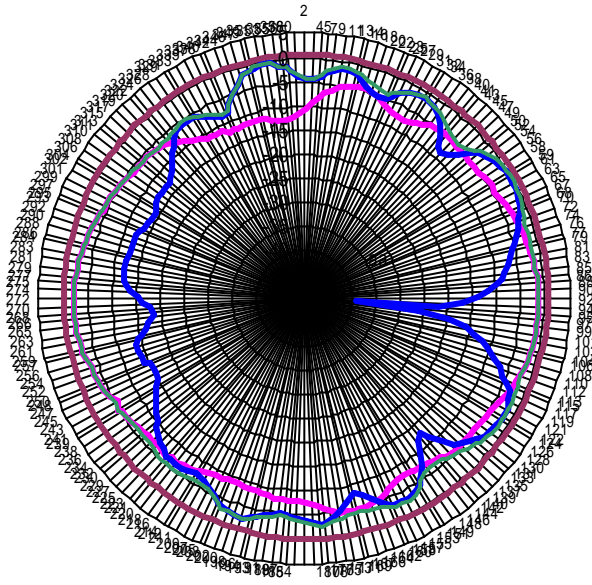
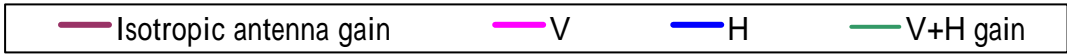
Center Frequency	2450 MHz
Horizontal (dBi) peak	-0.28
Vertical (dBi) peak	1.16
Horz+Vert (dBi) peak	1.18

Main antenna @2.5GHz



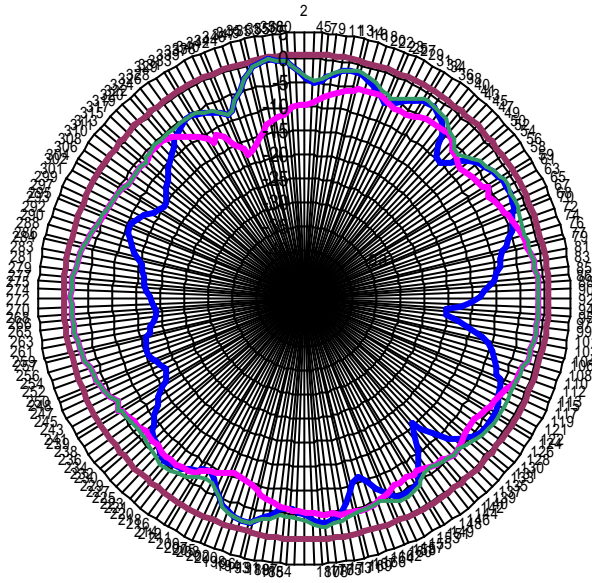
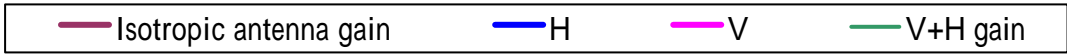
Center Frequency	2500 MHz
Horizontal (dBi) peak	1.54
Vertical (dBi) peak	1.57
Horz+Vert (dBi) peak	2.35

Aux antenna @2.4GHz



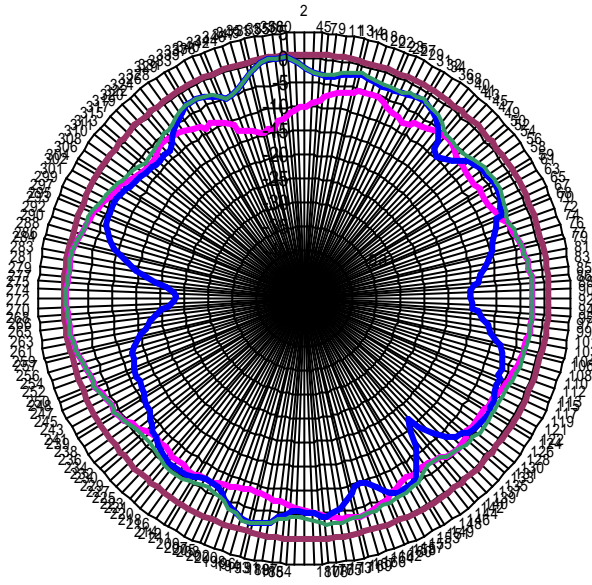
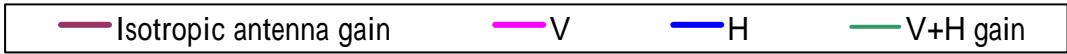
Center Frequency	2400 MHz
Horizontal (dBi) peak	-1.20
Vertical (dBi) peak	-1.85
Horz+Vert (dBi) peak	-0.96

Aux antenna @2.45GHz



Center Frequency	2450 MHz
Horizontal (dBi) peak	-0.54
Vertical (dBi) peak	-1.41
Horz+Vert (dBi) peak	-0.54

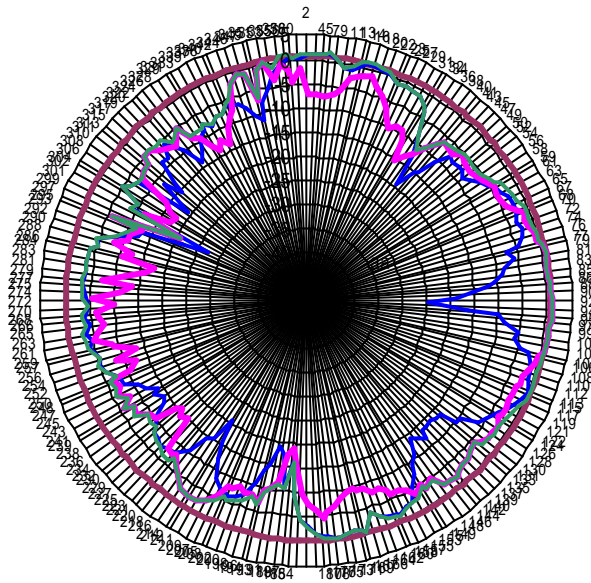
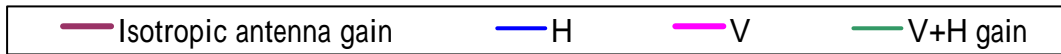
Aux antenna @2.5GHz



Center Frequency	2500 MHz
Horizontal (dBi) peak	-0.21
Vertical (dBi) peak	-0.52
Horz+Vert (dBi) peak	-0.2

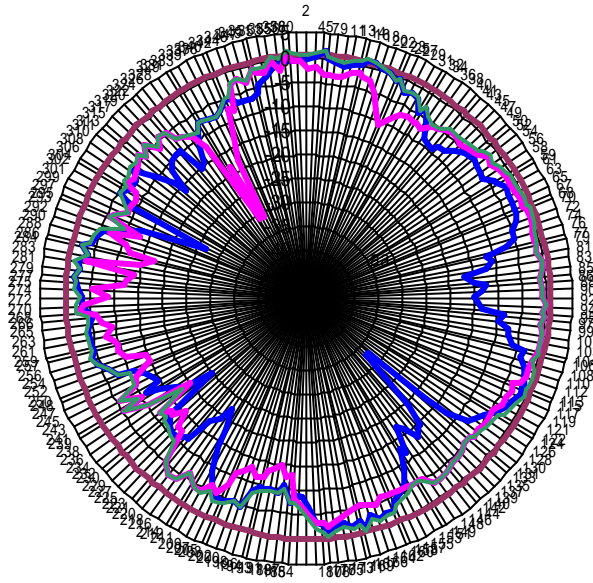
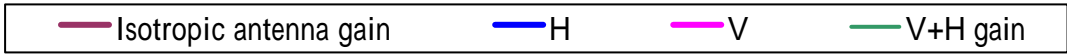
5150-5135 MHz radiation characteristic

Main antenna @5.15GHz



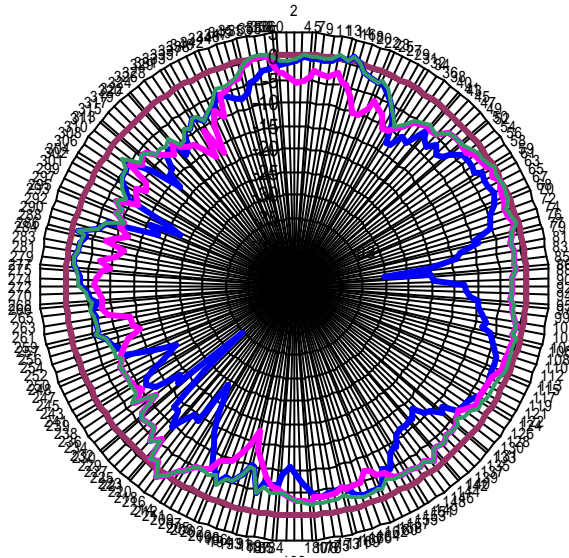
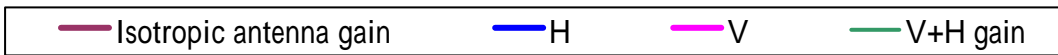
Center Frequency	5150 MHz
Horizontal (dBi) peak	0.63
Vertical (dBi) peak	0.48
Horz+Vert (dBi) peak	0.66

Main antenna @5.25GHz



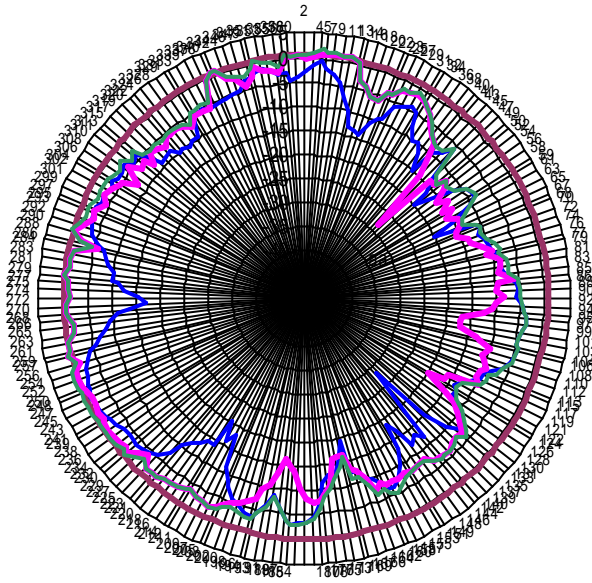
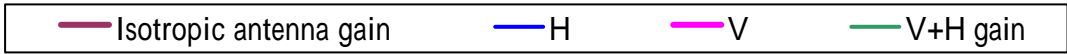
Center Frequency	5250 MHz
Horizontal (dBi) peak	0.73
Vertical (dBi) peak	0.07
Horz+Vert (dBi) peak	1.04

Main antenna @5.35GHz



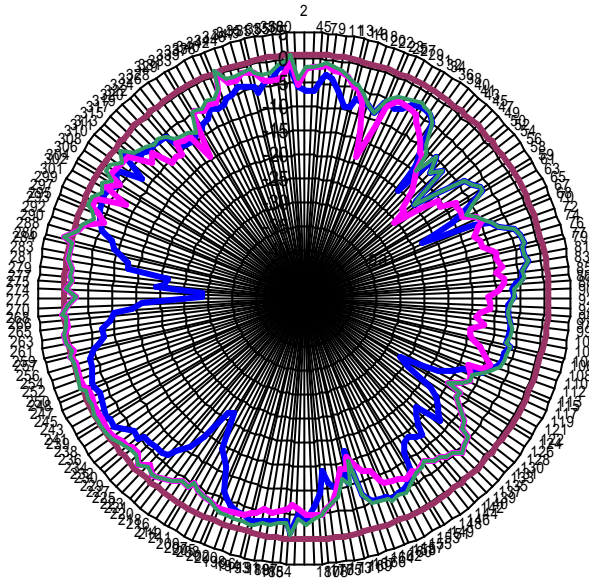
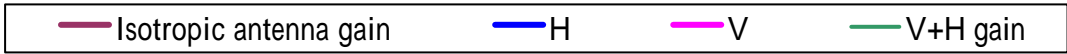
Center Frequency	5350 MHz
Horizontal (dBi) peak	1.53
Vertical (dBi) peak	1.03
Horz+Vert (dBi) peak	1.53

Aux antenna @5.15GHz



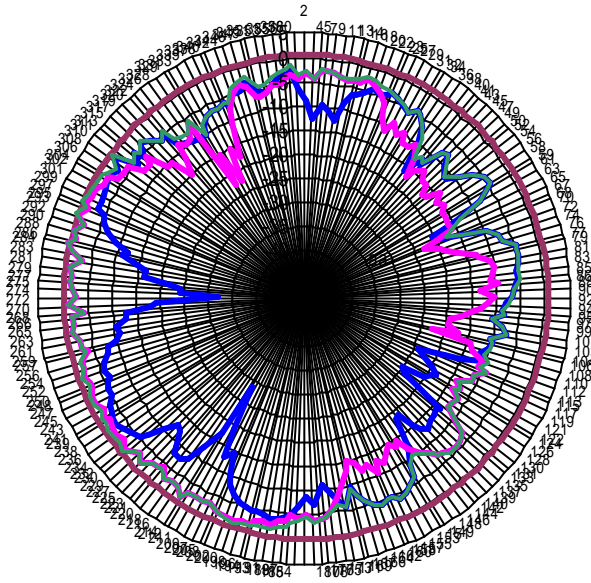
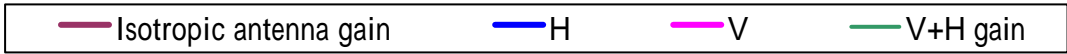
Center Frequency	5150 MHz
Horizontal (dBi) peak	-0.68
Vertical (dBi) peak	0.79
Horz+Vert (dBi) peak	1.14

Aux antenna @5.25GHz



Center Frequency	5250 MHz
Horizontal (dBi) peak	-1.01
Vertical (dBi) peak	1.69
Horz+Vert (dBi) peak	1.71

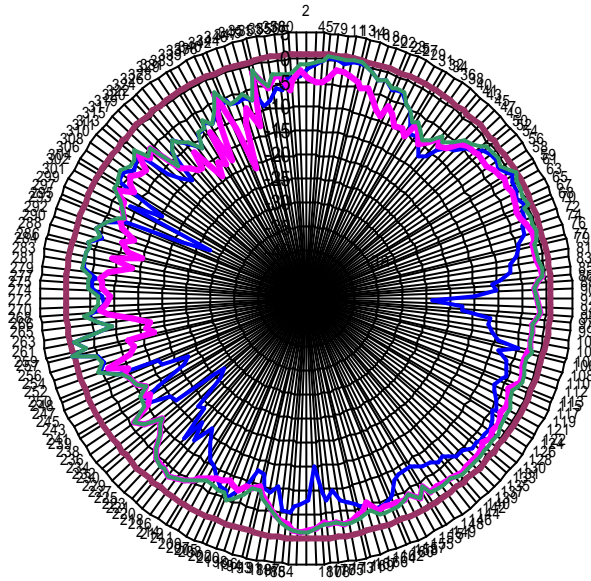
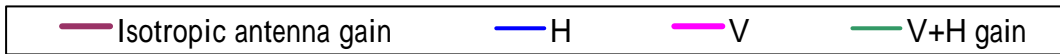
Aux antenna @5.35GHz



Center Frequency	5350 MHz
Horizontal (dBi) peak	-0.64
Vertical (dBi) peak	0.25
Horz+Vert (dBi) peak	0.26

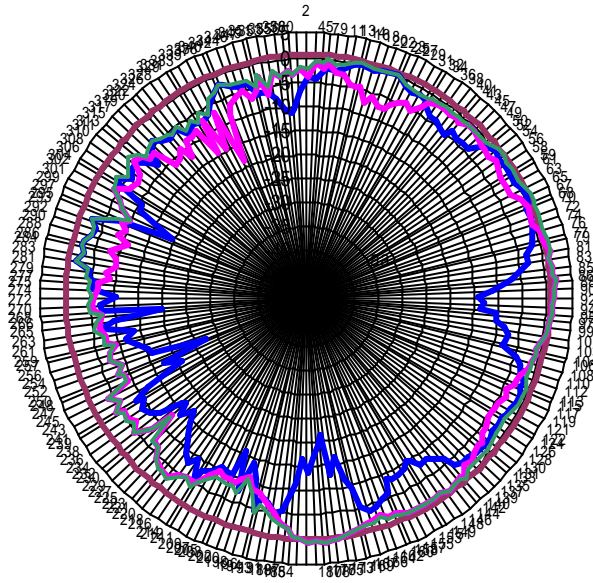
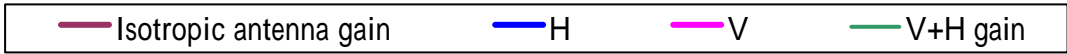
5470-5825MHz radiation characteristic

Main antenna @5.47GHz



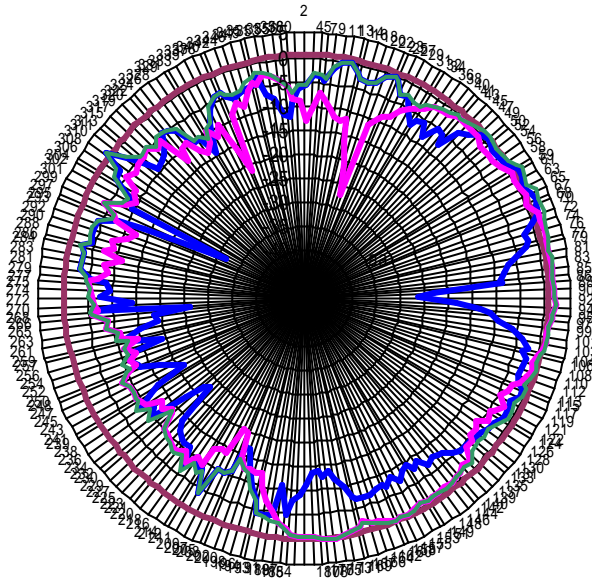
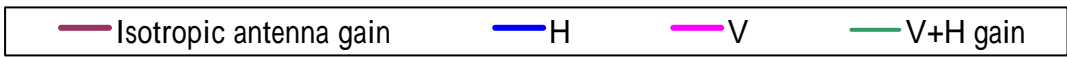
Center Frequency	5470 MHz
Horizontal (dBi) peak	0.20
Vertical (dBi) peak	-0.33
Horz+Vert (dBi) peak	0.2

Main antenna @5.6475GHz



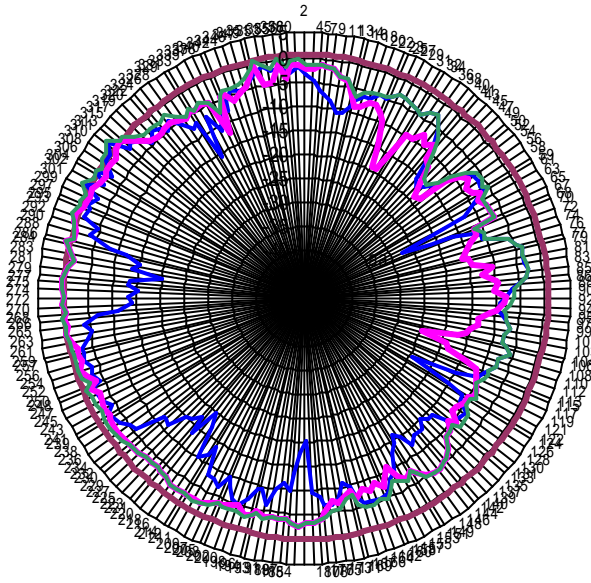
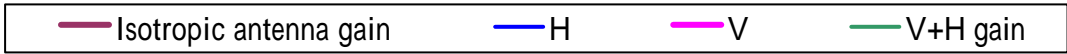
Center Frequency	5647.5 MHz
Horizontal (dBi) peak	-0.06
Vertical (dBi) peak	-0.82
Horz+Vert (dBi) peak	-0.06

Main antenna @5.825GHz



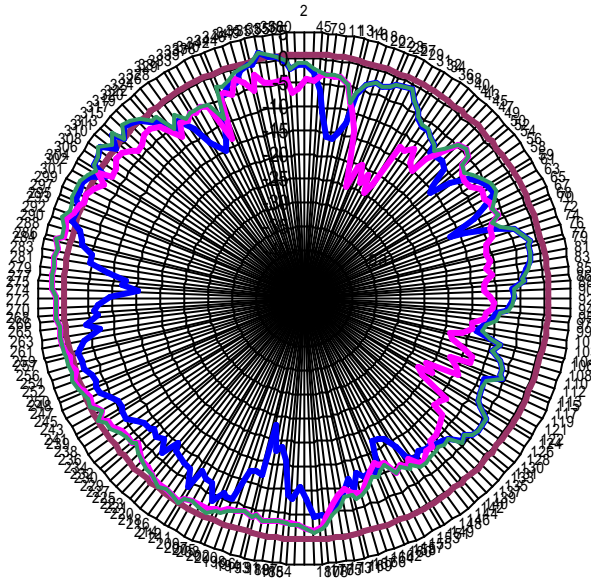
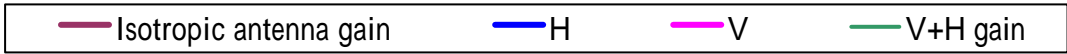
Center Frequency	5825 MHz
Horizontal (dBi) peak	-1.43
Vertical (dBi) peak	-1.11
Horz+Vert (dBi) peak	-0.42

Aux antenna @5.47GHz



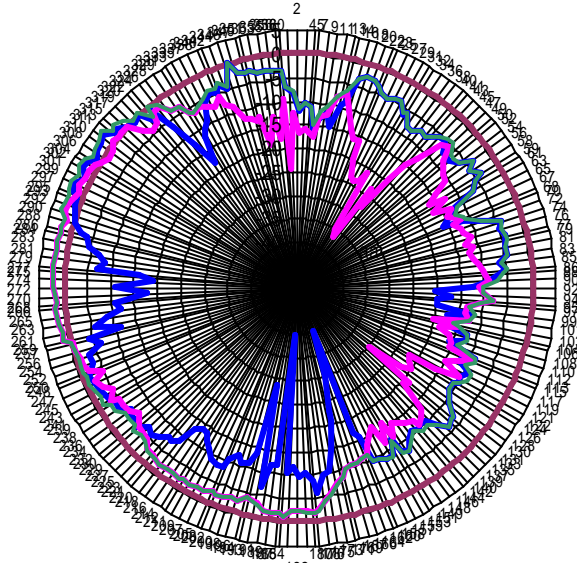
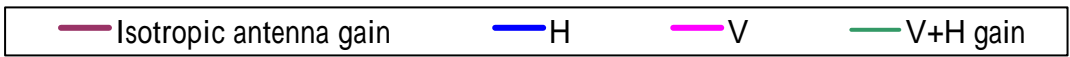
Center Frequency	5470 MHz
Horizontal (dBi) peak	1.78
Vertical (dBi) peak	0.93
Horz+Vert (dBi) peak	2.49

Aux antenna @5.6475GHz



Center Frequency	5647.5 MHz
Horizontal (dBi) peak	2.95
Vertical (dBi) peak	2.60
Horz+Vert (dBi) peak	3.03

Aux antenna @5.825GHz



Center Frequency	5825 MHz
Horizontal (dBi) peak	2.89
Vertical (dBi) peak	2.5
Horz+Vert (dBi) peak	3.74

Host PC Information

Host model:
Main antenna



Auxiliary Antenna

