

PPS22

Astell&Kern

---

**INSTRUCTION BOOK**

User Guide

# CONTENTS

## Getting Started <sup>-01</sup>

Package Contents	02
Product Overview	03
Power Management	05
Charging	06
Connections	07
Firmware Updates	13

## Using the Device <sup>-02</sup>

Basic Operations	14
Home Screen	19
Notification Bar	21
Using Open APP Service	24
AK CONNECT	25
AK File Drop	30
Listening to Music	32
Playlist Management	35
USB DAC Installation	38
How to Use USB Audio	39
CD Ripping	40
AK CD-Player	42
Car Mode	43
Bookmark Function	44
Favorites Function	45
Settings	46
Connecting to Wi-Fi	54
Using Bluetooth	55
Equalizer Setup	58

## Miscellaneous <sup>-03</sup>

Safety Pre-Cautions	61
Troubleshooting	63
Copyright	64
Certifications	65
Registered Trademarks	67
Disclaimers	68
Specifications	69

### Package Contents

Contents may be changed without prior notice to improve the performance or quality of the product.



PPS22



Protective Film



microSD Card Slot Cover



USB Type-C Cable



Quick Start Guide & Warranty Card

**Protective Film:** Protect the device and its screen.

**microSD Card Slot Cover:** The cover is used to protect the microSD card slot when not in use. It is installed in the product by default.

**USB Type-C Cable:** For charging and data transfer.

**Quick Start Guide:** Basic overview of device functionality.

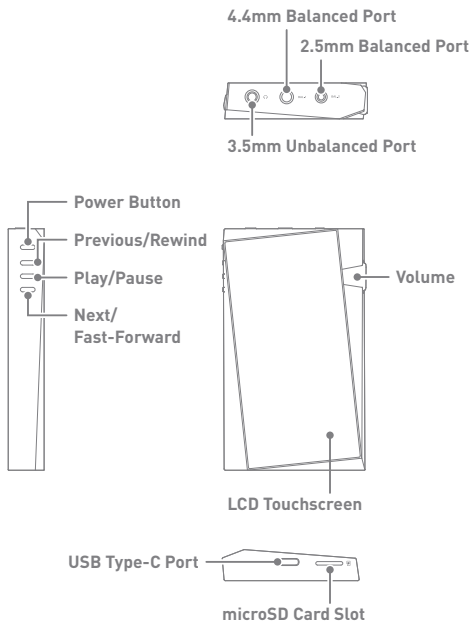
**Warranty Card:** Provides warranty details for your device. Maintain a copy of this card as it may be required for future technical support requests.

**User Guide:** The User Guide can be downloaded from the Astell&Kern website.

[<http://www.astellnkern.com> > Support > Download]

### Product Overview

The appearance of the product, as well as the printed and engraved information, may vary depending on the model.



**Power:**  - **Power symbol.**

Short press - Turns the screen on or off.

Press and hold - Turns the device on or off.

**Volume:** Turn the wheel to adjust the playback output volume level.

**3.5mm Unbalanced Port:**

 - **3.5mm Unbalanced Port symbol.**

For audio output, connect earphones or headphones that utilize a 3.5mm jack.

**4.4mm Balanced Port:** BAL.1 - **4.4mm Balanced Port symbol.**

For audio output, connect earphones or headphones that utilize a 4.4mm jack.

**2.5mm Balanced Port:** BAL.2 - **2.5mm Balanced Port symbol.**

For audio output, connect earphones or headphones that utilize a 2.5mm jack.

**Previous/Rewind:**

Short press - Play the previous song or restart the current song.

Press and hold - Rewind the current song.

**Play/Pause:** Play or pause the current song.

**Next/Fast-Forward:**

Short press - Play the next song.

Press and hold - Fast-forward the current song.

**LCD Touchscreen:** Display screen with touch control features.

**microSD Card Slot:**  - **microSD Card Slot symbol.**

Insert a microSD card to access its files.

**USB Type-C Port:** 5V  $\Rightarrow$  2A - **DC Power symbol.**

For charging and data transfer.

# Power Management

### Powering the Device On/Off

1. Press and hold the [Power] button to turn on the device.
2. While the device is on, press and hold the [Power] button to shut down the device. A confirmation message will appear.
3. Press [OK] to turn off the device.



This device has an automatic shutdown feature to save battery power. The device will turn off if there is no user input during the period defined in [Menu - Settings - Timer Settings - Auto Power Off] (See Page 51)

### Turning the Screen On/Off

1. While the screen is on, press the [Power] button to turn off the screen.
2. Press [Power] button again to turn it on.



This device has an automatic timeout feature to save battery power. The screen will turn off if there is no user input during the period defined in [Menu - Settings - Timer Settings - Screen Timeout]. (See Page 51)

### Reset Function

1. In case of unexpected device failure or freeze, press and hold [Power] for 7 seconds to force a shutdown. The device can then be restarted after the shutdown is complete.



Resetting the device will not affect stored data or time settings. Do not use the reset function while the product is in use. Doing so may corrupt the data on the device.

# Charging

### Charging via USB Wall Adapter

1. Commercially available 5V 2A output adapters may be used for charging.



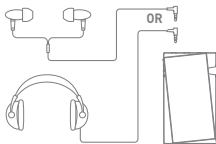
Normal charging: Approx. 5 hours (Fully discharged, Power-off, 5V 2A adapter)

The manufacturer shall not be responsible for problems caused by the use of adapters that do not adhere to the recommended specifications.

# Connections

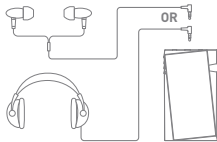
### 3.5mm Unbalanced Port

1. Connect earphones or headphones to the 3.5mm unbalanced port.



### 2.5/4.4mm Balanced Port

1. Connect earphones or headphones that support a 2.5mm or 4.4mm headphone jack to the 2.5mm or 4.4mm balanced port.





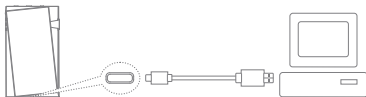
### Connecting to a Balanced Audio Device

1. Connect to an external audio device by using the 3.5mm unbalanced port and 2.5mm balanced port.



### Connecting to a Computer

1. Turn on the device and your computer.
2. Use the USB Type-C cable to connect the device to a computer in accordance with settings in [Menu - Settings - USB Mode].
  - [Default] Media Device (USB Drive): Transfer files from a computer to the device.
  - DAC Input: Listen to music on a connected computer through the device. (See Page 39)



Mac users need to download and install Android File Transfer from the Astell&Kern website. [<http://www.astellnkern.com> > Support > Download]

For an optimal connection, quit any unnecessary programs before connecting the device to the computer.

Do not use cables other than the USB Type-C cable provided with the device. Doing so may cause malfunctions.

Use USB 2.0 only on Mac.

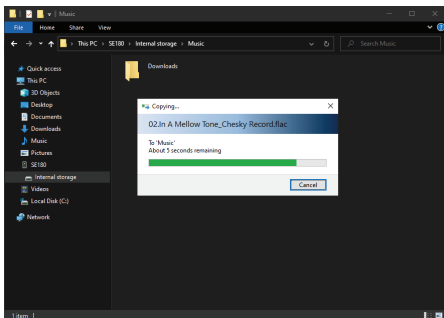
Type-C-to-Type-C cable is recommended when connecting with a MAC that supports Type-C port.

When a USB connection is established while playing a DSD or DXD file, a mode selection pop-up box will appear with the following options:

- External device connection: Connect the player to the computer to transfer files, USB DAC for audio playback or CD Ripper connection.
- Charge device: Charge the device.

### Copy Files (Folders) to the Device

1. To copy files/folders from your computer, select the desired files/folders and drag & drop them into the device folder.



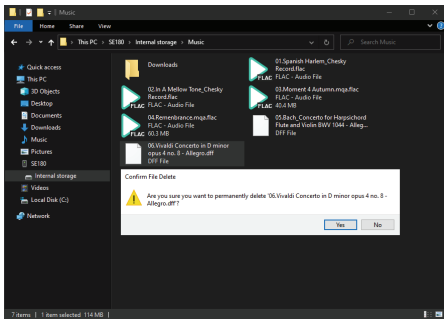
Ensure the USB Type-C cable is properly connected.

Turning off the device, computer or disconnecting the USB Type-C cable while copying or moving files/folders may corrupt files or device memory.

File transfer speeds may be affected by the computer and/or the OS environment.

### Delete Files (or Folders) from the Device

1. Select the file/folder to delete, right-click the mouse, and then select [Delete].
2. Select [Yes] in the [Confirm File/Folder Deletion] window to delete the selected files/folders.



### Disconnecting from the Computer

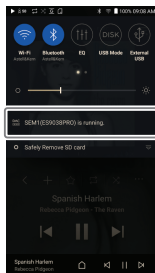
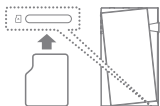
1. Disconnect the USB Type-C cable after the transfer between the device and computer is complete.



Disconnecting the device from the computer during a file transfer may corrupt data on the device.

### Insert/Remove a microSD Card

1. Refer to the diagram and gently insert a microSD card into the microSD card slot.
2. To safely remove a microSD card, on the Home Screen, select [Safely remove SD card] from the Notification Bar or select [Unmount SD card] from [Menu - Settings - System Information].
3. Gently press the microSD card in to unlock and release it from the slot.



### Recommended microSD Cards

#### SAMSUNG, SANDISK



##### Maximum Capacity: 1TB

##### Notes on Inserting a microSD Card

- Do not force the microSD card into the slot. Doing so may cause malfunction of the product and damage to the card.
- Do not repeatedly insert/remove the microSD card.
- If not inserted properly, the microSD card may cause product malfunctions and may become lodged in the product.

##### Notes on Removing a microSD Card

- Be sure to safely remove the microSD card from the device. Not following the proper procedure may corrupt data and cause serious damage to the both the card and device.
- Do not remove the microSD card during use. Doing so may cause malfunction, delete data and damage the microSD card.

### Notes on Using a microSD Card

- If the microSD card is not recognized or functions improperly, format the card, preferably in the FAT32 system.
- Using cards other than the recommended microSD card types may cause malfunctions.
- A microSD card is not included in the product package. Please purchase separately.

## Firmware Updates

### Wi-Fi Update / OTA (Over-the-Air)

1. Connect to a wireless network.
2. If a new firmware update is available, the screen will display a Firmware Update Guide window.
3. Select [Update].
4. Follow the on-screen instructions to proceed with the firmware update.



For Wi-Fi connections, see Page 54.

The firmware update may not start if the battery level is too low. (A minimum battery level of 20% is required.)

Do not disconnect from the wireless network while downloading the update file. Doing so may cause data corruption and/or damage to the system.

If an error occurs or the notice in the Notification Bar disappears during an update, download the firmware update again through [Menu - Settings - Update - System].

Moving to another screen during a file download will cancel the download.

### Basic Operations

#### LCD Touchscreen

1. This device features a LCD touchscreen that allows you to perform operations by touch.  
Use the touchscreen to access various features on the device.



To prevent damage to the screen, do not use a sharp object or excessive force.

#### Return to the Home Screen

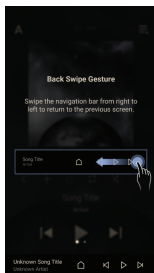
1. Press [⏏] at any time to return to the Home Screen.



### Using the Back Function

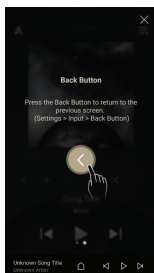
#### Back Swipe Gesture

1. Swipe the navigation bar from right to left to return to the previous screen.



#### Back Button

1. Press the Back Button to return to the previous screen.



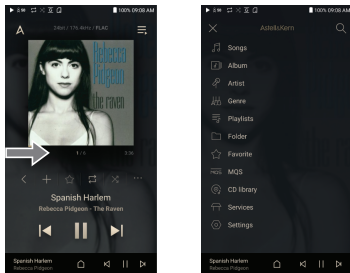
This feature can be enabled or disabled under Settings - Input Method - Back Button.



From the Home Screen, swipe your finger to the left, right, up or down from any edge of the touchscreen to access display menus. Each side of the Home Screen will activate a different display menu.

### Main Menu

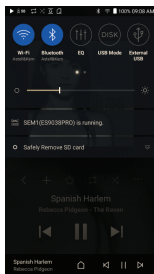
1. From the left edge of the touchscreen, swipe your finger right to display the Main Menu, or tap the "A" icon in the upper left corner of the screen.



Music files extracted using the AK CD-Ripper accessory that are stored in the Ripping folder of the internal memory will be displayed in the CD library menu.

### Notification Bar

1. From the top edge of the touchscreen, swipe your finger down to display the Notification Bar.



### View Current Playlist

1. From the right edge of the touchscreen, swipe your finger left to display the Now Playing menu.

