



Dreamus Corp.

APPROVAL SHEET


KANN ULTRA			
NO	MODEL	FREQUENCY	
1	HWI-ABG-KANNULTRA	WIFI 2.4GHz/BT	2400 ~ 2500 MHz
		WIFI 5GHz	5170 ~ 5825 MHz

SUPPLIER			CUSTOMER		
Engineer	Review	Approved	Engineer	Review	Approved
					
23/06/21		23/06/21			



HANWOOL TECHNOLOGY CO., LTD
#1002 IT303-DONG, PUCHONTECHNOPARK III 36-1
SAMJUNG-DONG, OHJUNG-GU, KYOUNG GI-DO, KOREA
TEL: 032) 624-2555
FAX: 032) 624-2559

HISTORY SHEET

ITEM	FPCB ANTENNA	Developed by	Kyoung-Min Lee	
Part Name	HWI-ABG-KANNULTRA	Director		
Rev. No.	Date	Description	Etc.	
0	2023-06-21	Initial Version		

ANTENNA SPECIFICATION

1. MODEL: HWI-ABG-KANNULTRA

2. APPLICATION:

This specification is provided for WIFI 2.4, 5GHz, BT ANTENNA.

3 ANTENNA used condition

■ Portable ■ Fixing ■ Movement ■ Out-door ■ In-door ■ Etc()

4. ANTENNA Drawing

#3. Attached : Drawing paper

5. Electrical specification and performance

Satisfied next data with real used or similar environment conditions.

No.	ELECTRICAL DATA	SPECIFICATIONS		REMARK
5. 1	FREQUENCY RANGE	WIFI 2.4GHz /BT	2400 ~ 2500 MHz	
		WIFI 5GHz	5170 ~ 5825 MHz	
5. 2	IMPEDANCE	50 Ω NOMINAL		
5. 3	V. S. W. R	WIFI 2.4GHz /BT	Less than 1 : 6.43	#1. Attached
		WIFI 5GHz	Less than 1 : 4.06	
5. 4	PEAK GAIN	WIFI 2.4GHz /BT	-2.97 dBi	#2. Attached
		WIFI 5GHz	-2.92 dBi	
5. 5	RADIATION PATTERN	OMNI - DIRECTIONAL		
5. 6	POLARIZATION	LINEAR		

6. Hardware specification and mechanical

No.	MECHANICAL	SPECIFICATIONS	REMARK
2. 6. 1	FPCB Size [W X H X T]	24.7 X 18.7 X 0.15 (mm)	

7. SINUSOIDAL VIBRATION

Vibration Frequencies : 5- 55 Hz (1 cycle)

Sweep Rate : 1 cycle/min

Maximum Amplitude : A - 1 mm

Maximum Acceleration: 2 g

Measuring method

Antenna is combined in the test equipment.

The vibration is done X and Y direction (left, right, up and down) according to below image.

It continued for 2 hours each direction.

8. OPERATING TEMPERATURE

Temperature : - 40℃ / +70℃

Demands : Set Antenna and Cable for 72 hours each temperature.

No visual and mechanical changes.

The fitting and mold will be unchanged mechanically during the test.

The antenna shall satisfy the electrical data

9. HUMIDITY

Condition : 95% / +70℃

Measuring method

Antenna is placed in climatic chamber for 72 hours.

Antenna is taken out from the chamber and measured

after another 24 hours in room temperature

Demands : No visual and mechanical changes.

The fitting and mold will be unchanged mechanically during the test.

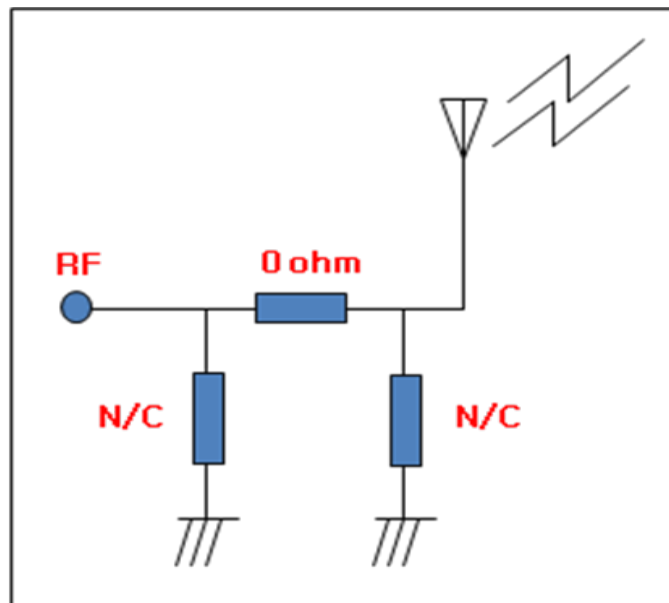
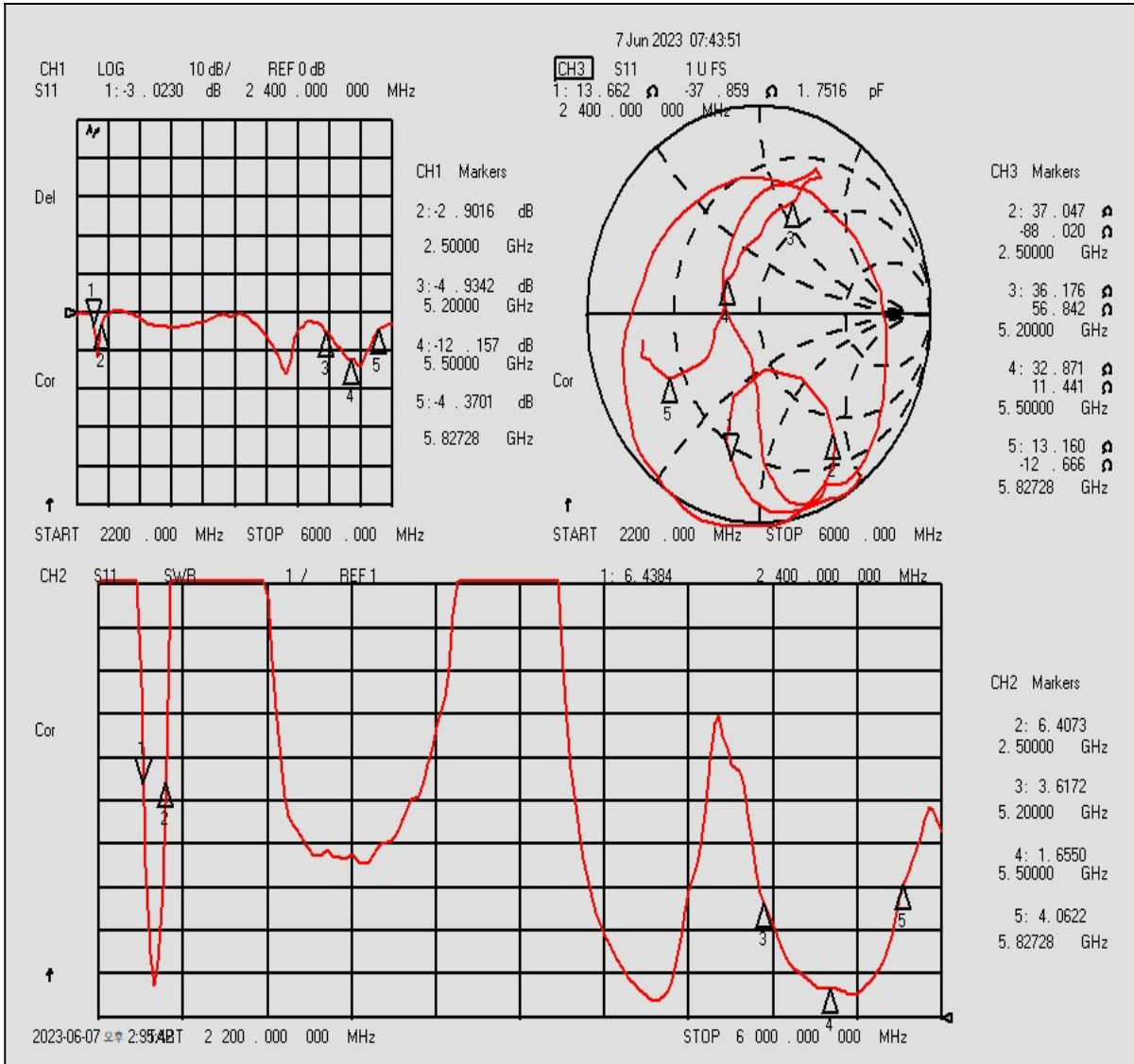
The antenna shall satisfy the electrical data.

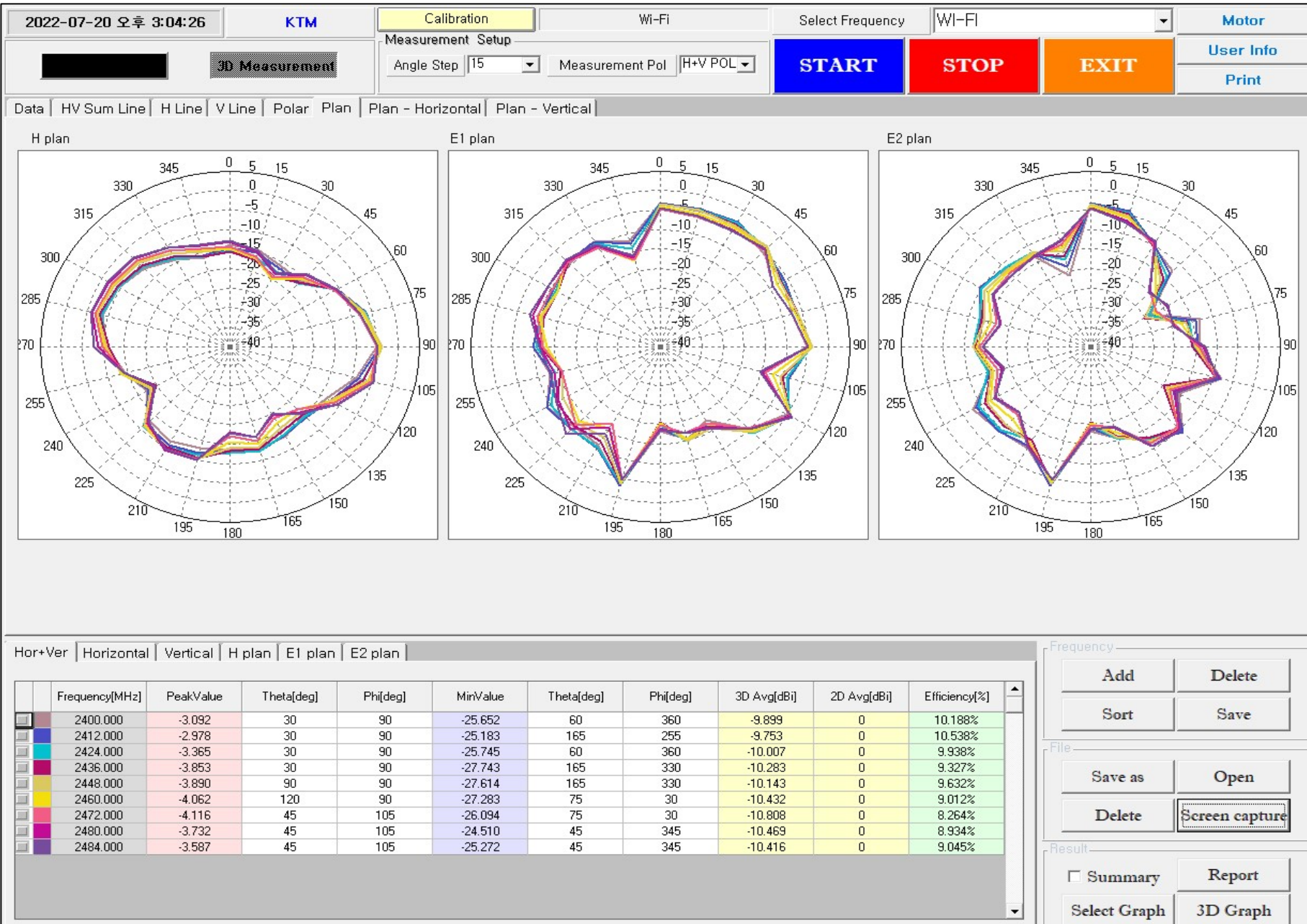
10. TEST and Q/C

This specification is according to fixed demands and suitable Hanwool technology Q/C provision.

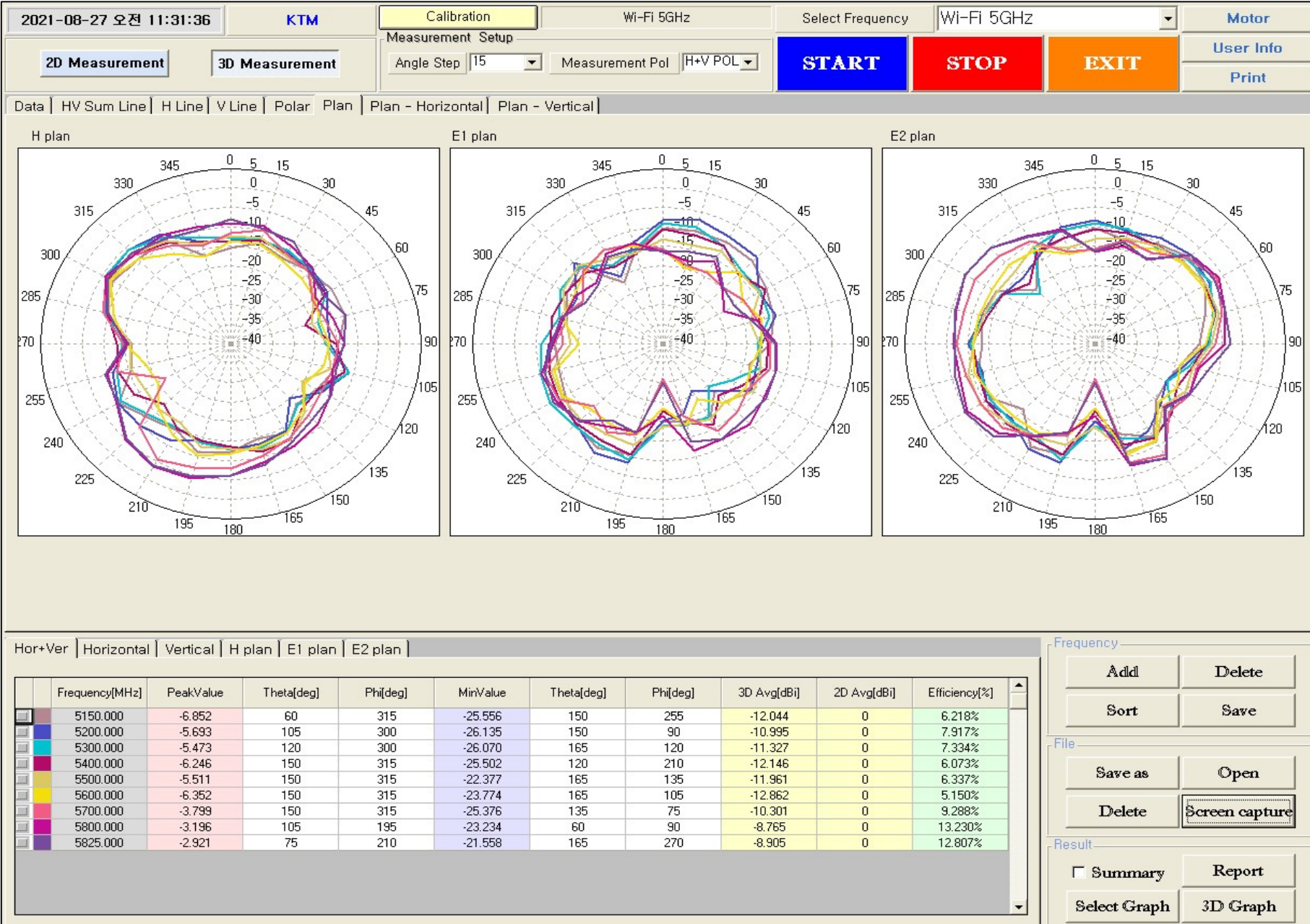
But it is possible to skip No. 7~9 demands, after consultation with buyer.

- #1. Attached : VSWR





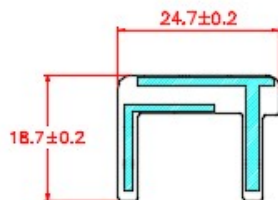
- #2. Attached : RADIATION PATTERN(GAIN)_WIFI 2.4GHz/BT



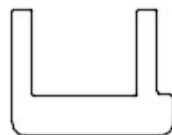
No	Revision Note	Checked	Date
▲			

Pattern :

TOP

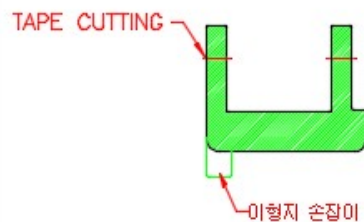
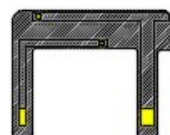


BOTTOM



INK : Black INK

TOP



BOTTOM

Silk print : White Color

TOP



1. ■ 표시는 패턴 Area임.
2. ■ 표시는 금도금 Area임.
3. ■ 표시는 무광 INK 영역임.
4. ■ 표시는 3M 467 영역임.
5. 1/2 OZ, 1/2 MIL, 단면F-PCB 적용.

* Contact Type 필히 금도금 적용 바람

1					1	
No	Part Name		Material Description		Q'ty	Finish
1/1	Unit	Title	F-PCB		Model	HWI-ABG-KANNULTRA
Decimal	Angle	J.O,LIM	Checked by	Approved by	File Name	드림어스
일반급차 적용	N/A	230620-54		H,CHOI	Hanwool Technology	