
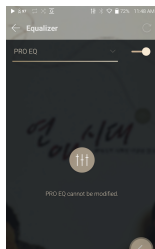


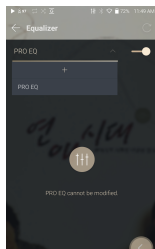
Equalizer Setup

Equalizer Setup

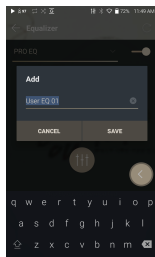
1. Press and hold [] on the Notification Bar or turn on [Menu - Settings - Equalizer].



2. Press [PRO EQ] to activate the drop-down menu and select [+].



3. Enter a name for the custom EQ settings and select [SAVE].




4. Adjust the frequencies up and down according to the user's preferences.
5. The number values at the lower-left corner of the screen can be adjusted for fine-tuning.

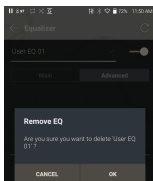


6. Press the [Advanced] tab on the top to display PEQ settings screen. Adjust Freq/Gain/Q.




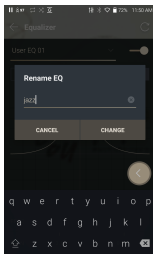
Deleting a Custom Equalizer Setting

1. Press on the drop-down menu at the upper-left corner of the screen to display the list of saved EQ settings.
2. Press [] next to the EQ name to be deleted.
3. Press [OK] to delete the selected EQ setting.



Renaming a Custom Equalizer Setting

1. Press on the drop-down menu at the upper-left corner of the screen to display the list of saved EQ settings.
2. Press [] next to the EQ setting name you wish to change and enter a new name for the selected EQ.
3. Press [CHANGE] to save.



Safety Pre- Cautions

Device

- When a plug is inserted into the earphones, 2.5mm balanced, or USB port, do not apply any force or impact to the plug.
- Do not insert any metal objects (coins, hairpins, etc.) or flammable debris into the device.
- Do not put heavy objects on the device.
- If the device gets wet (rain, water, chemicals, medicine, cosmetics, sweat, moisture, etc.), allow the device to dry thoroughly before powering on. Contact the nearest IRIVER Customer Support Center for service. (Damage may not be repairable, however if deemed repairable, any damage due to liquid exposure will be repaired for an additional fee even if the device is under warranty.)
- Avoid exposing the device to direct sunlight or extreme temperatures (0°C - +40°C) such as the inside of a car during the summer.
- Do not store or use in hot and humid places such as saunas.
- Avoid places with excessive dust, or smoke.
- Do not use for extended periods on blankets, electric blankets, or carpet.
- Do not place near a fire or in a microwave.
- Never disassemble, repair, or alter the product.
- Do not store for extended periods in a confined space with the power on.
- Do not place the device near magnetic objects (magnets, televisions, monitors, speakers, etc.).
- Do not let chemicals or detergents come in contact with the product since they may damage the surface and paint.
- Do not drop or expose the product to strong impacts (places where there is strong vibration. etc.).
- Do not press multiple buttons simultaneously.
- Do not disconnect the USB Type-C cable during data transfer.
- When connecting the device to a computer with the USB Type-C cable, use a USB port on the back of the computer for best results.

- Connecting the cable to a defective or damaged USB port on a computer may damage the device.
- Displaying one image for an extended period may cause screen burn-in (afterimage).
- Using poor quality protective films or adhesive stickers on the screen may cause damage.
- Do not insert any foreign objects into the device ports.
- The device may become warm while playing and charging, so handle it carefully.
- Product's corners may be sharp, so handle carefully.

Other

- Do not use earphones/headphones or use the device while operating any type of vehicle. It is not only dangerous, but may be a violation of the law in certain regions.
- Do not use the product during physical activities (driving, walking, hiking, etc.).
- Always use in a safe environment to avoid the risk of an accident.
- When using the device while moving, make sure the area is free of obstacles.
- Avoid using the device during thunderstorms to reduce the possibility of electric shock.
- If there is a ringing in the ears, reduce the volume or stop using the device.
- Do not listen to music at excessive volumes for extended periods.
- Do not use earphones/headphones at excessive volumes.
- Make sure that the headphone/earphone does not get stuck in another object or get caught between other objects.
- Do not sleep with earphones in your ears or leave them in for extended periods.

Troubleshooting

Solutions to Common Issues

1. The device won't turn on.
 - The battery may need to be recharged. Charge the device for at least one hour and try again.
 - Reset the device. (See Page 5)
2. The device will not charge when connected to a computer via USB cable.
 - Connect to the computer using the provided USB Type-C cable. Charging may not be performed depending on the condition of your PC.
(In this case, charging with a PC is not recommended.)
 - Connect the device to a USB wall adapter using the provided USB Type-C cable to charge directly from a wall outlet.
3. The computer won't recognize the device or an error occurs when connected.
 - Use a USB port on the back of the computer.
 - Check if the USB Type-C cable is connected correctly.
 - For Mac, check to ensure the MTP program is installed properly.
 - Check if the device connects properly on a different computer.
4. The screen turns off repeatedly.
 - The screen turns off automatically after a defined period to reduce battery consumption. Set the time at [Menu-Settings - Timer Settings - Screen Timeout].
5. The screen does not display images properly.
 - Check the screen for debris.
6. There is no sound, or there is static/interference.
 - Check that the volume setting is above [0].
 - Check that the earphones are plugged in properly and make sure nothing is obstructing the port connection.
 - Verify that the music file is not corrupt.
 - Verify that the audio settings have been set properly.
(Balanced out, line out, etc.)

7. A file does not play, or the product becomes unstable when a certain file is played.
 - File may be damaged or corrupt if the following occurs:
 - Playback stops or freezes.
 - Device may act erratically or freeze.
 - File may sound different on another device.
 - There may be a difference in the performance of playback or other functions.
 - There may be differences in the file specs.
 - Converting the file to a different format or use of a different file is recommended.

Copyright

IRIVER Limited retains the rights to patents, trademarks, copyrights, and other intellectual property rights related to this manual. No contents of this user manual may be duplicated or reproduced in any format or by any means without the prior approval of IRIVER.

Using or reproducing, in whole or part, the contents of this document is subject to penalties. Software, audio, video, and any other copyrighted contents are protected in accordance with relevant copyright laws.

The user accepts all legal responsibility for the unauthorized reproduction or distribution of the copyrighted contents from this product.

Companies, organizations, products, people, and events used in the examples are fictional. IRIVER has no intention to be associated with any company, institution, product, person, or incident through this instruction book, and no such inference should be made. It is the responsibility of the user to comply with applicable copyright laws.

©1999~2019 IRIVER Limited. All rights reserved.

The PPM42 was designed and audio-tuned under the advisement of MSD.

Certifications

KC / FCC / CE / TELEC

Class B Device (Communication equipment for residential use): This is a Class B Device and is registered for EMC requirements for residential use. This device can be used in residential areas and all other areas.



FCC ID: QDMPPM42

This device complies with Part 15 of the FCC Rules, Operation is subject to the following two conditions: (1) this device may not cause harmful interference, and (2) this device must accept any interference received, including interference that may cause undesired operation.

FCC Caution: Any changes or modifications not expressly approved by the party responsible for compliance could void the user's authority to operate this equipment.

This equipment complies with RF exposure requirements set forth for an uncontrolled environment.

b) For a Class B digital device or peripheral, the instructions furnished the user shall include the following or similar statement, placed in a prominent location in the text of the manual: NOTE: This equipment has been tested and found to comply with the limits for a Class B digital device, pursuant to part 15 of the FCC Rules. These limits are designed to provide reasonable protection against harmful interference in a residential installation.

This equipment generates, uses and can radiate radio frequency energy and, if not installed and used in accordance with the instructions, may cause harmful interference to radio communications. However, there is no guarantee that interference will not occur in a particular installation. If this equipment does cause harmful interference to radio or television reception, which can be determined by turning the equipment off and on, the user is encouraged to try to correct the interference by one or more of the following measures:

- Reorient or relocate the receiving antenna.
- Increase the separation between the equipment and receiver.
- Connect the equipment into an outlet on a circuit different from that to which the receiver is connected.
- Consult the dealer or an experienced radio/TV technician for help.

Body-Worn Operation

This device was tested for typical body-worn operations with the back of the portable music player kept 5mm from the body. To maintain compliance requirements, use only belt-clips, holsters or similar accessories that maintain a 5mm separation distance between the user's body and the back of the portable music player, including the antenna. The use of belt-clips, holsters and similar accessories should not contain metallic components in its assembly. The use of accessories that do not satisfy these requirements may not comply with CE RF exposure requirements, and should be avoided.

Body-worn accessory exposure conditions "Specific information must be included in the operating manuals to enable users to select body-worn accessories that meet the minimum test separation distance requirements. Users must be fully informed of the operating requirements and restrictions, to the extent that the typical user can easily understand the information, to acquire the required body-worn accessories to maintain compliance. Instructions on how to place and orient a device in body-worn accessories, in accordance with the test results, should also be included in the user instructions. All supported body-worn accessory operating configurations must be clearly disclosed to users through conspicuous instructions in the user guide and user manual to ensure unsupported operations are avoided. All body-worn accessories containing metallic components must be tested for compliance and clearly identified in the operating manual. The instruction must inform users to avoid using other body-worn accessories containing metallic components to ensure RF exposure compliance."

Registered Trademarks

Windows 7, Windows 8, Windows 10, and Windows Media Player are registered trademarks of Microsoft Corp.



Qualcomm®
aptX™ HD

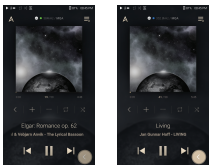


MQA (Master Quality Authenticated) is an award-winning British technology that delivers the sound of the original master recording. The master MQA file is fully authenticated and is small enough to stream or download. Visit mqa.co.uk for more information.

Astell&Kern PPM42 includes MQA technology, which enables you to play back MQA audio files and streams, delivering the sound of the original master recording.

The PPM42 Now Playing status shows green or blue light to indicate that the unit is decoding and playing an MQA stream or file, and denotes provenance to ensure that the sound is identical to that of the source material. It glows blue to indicate it is playing an MQA Studio file, which has either been approved in the studio by the artist/producer or has been verified by the copyright owner.

The MQA logo is a trade mark of MQA Limited. © MQA Limited 2018



Disclaimers

The manufacturer, importer, and distributor shall not be liable for damages including accidental and personal injury due to the improper use or operation of this product. The information in this user manual was written based on current product specifications. The manufacturer, IRIVER Limited, regularly adds new features via OTA updates and will continue to apply new technologies in the future. Product specifications may be changed without prior notice. There is no warranty against data loss due to the use of this product.

The device must be used a minimum of 5mm away from the body in normal use conditions.

CAUTION

RISK OF EXPLOSION IF BATTERY IS REPLACED
BY AN INCORRECT TYPE.
DISPOSE OF USED BATTERIES ACCORDING
TO THE INSTRUCTIONS

The excessive sound pressure from earphones and headphones can cause hearing loss.

Specifications

General Specifications	
Product Name	KANN CUBE
Model	PPM42
Body Color	Lapis Blue
Body Material	Aluminum
Display	5.0inch 720x1280 touch display
Supported Audio Formats	WAV, FLAC, WMA, MP3, OGG, APE, AAC, ALAC, AIFF, DFF, DSF, MQA
MQA playback	Services (Tidal Masters), Local files, External USB, MQA-CD(ripped)
Sample rate	PCM : 8kHz ~ 384kHz (8/16/24/32bits per Sample) DSD Native: DSD64(1bit 2.8MHz), Stereo / DSD128(1bit 5.6MHz), Stereo / DSD256(1bit 11.2MHz), Stereo
Output Level	Unbalanced 2.1Vrms / Balanced 4.2Vrms (Condition No Load) / XLR 3.9Vrms
DAC	ESS ES9038PRO SABRE x2 (8ch Dual DAC)
Decoding	Support up to 32bit / 384kHz Bit-to-Bit playback
Input	USB Type-C input (for PC & MAC)
Outputs	PHONES (3.5mm) / Balanced Out (2.5mm, only 4-pole supported) Optical Out (3.5mm) / XLR Out (5pin)
Charging	9V \approx 1.67A / 5V \approx 2A
Wi-Fi	802.11 b/g/n (2.4GHz)
Bluetooth	V4.2 (A2DP, AVRCP, aptX™ HD)
Dimensions	3.45"[87.75mm][W] x 5.51"[140mm][H] x 1.24"[31.5mm][D]
Weight	17.7oz(502g)
Feature Enhancements	Firmware upgrade supported(OTA)
Audio Specifications	
Frequency Response	\pm 0.062dB (Condition: 20Hz~20kHz) Unbalanced / \pm 0.061dB (Condition: 20Hz~20kHz) Balanced, \pm 0.68dB (Condition: 10Hz~70kHz) Unbalanced / \pm 0.67dB (Condition: 10Hz~70kHz) Balanced
S/N	120dB @ 1kHz, Unbalanced / 123dB @ 1kHz, Balanced
Crosstalk	138dB @ 1kHz, Unbalanced / 144dB @ 1kHz, Balanced
THD+N	0.0007% @ 1kHz, Unbalanced / 0.0006% @ 1kHz, Balanced
IMD SMPTE	0.0004% 800Hz 10kHz(4:1) Unbalanced / 0.0004% 800Hz 10kHz(4:1) Balanced
Output impedance	Balanced Out 2.5mm (1ohm) / PHONES 3.5mm (2ohm)
Clock Jitter	25ps[Typ]
Reference Clock Jitter	200 Femto Seconds
Memory	
Built-in Memory	128GB[NAND]
External Memory	microSD(Max. 400GB) x 1
Battery	
Capacity	7,400mAh 3.8V Li-ion Battery
Supported OS	Windows 7,8,10(32/64bit) Mac OS X 10.7 and up