

KCTL Inc.

65, Sinwon-ro, Yeongtong-gu,
Suwon-si, Gyeonggi-do, 16677, Korea
TEL: 82-31-285-0894 FAX: 82-505-299-8311
www.kctl.co.kr

Report No.:
KR19-SPF0008-A
Page (47) of (53)



Appendix B. EUT Photo

Front



Rear



KCTL Inc.

65, Sinwon-ro, Yeongtong-gu,
Suwon-si, Gyeonggi-do, 16677, Korea
TEL: 82-31-285-0894 FAX: 82-505-299-8311
www.kctl.co.kr

Report No.:
KR19-SPF0008-A
Page (48) of (53)

KCTL

Left



Right



KCTL Inc.

65, Sinwon-ro, Yeongtong-gu,
Suwon-si, Gyeonggi-do, 16677, Korea
TEL: 82-31-285-0894 FAX: 82-505-299-8311
www.kctl.co.kr

Report No.:
KR19-SPF0008-A
Page (49) of (53)

KCTL

Top

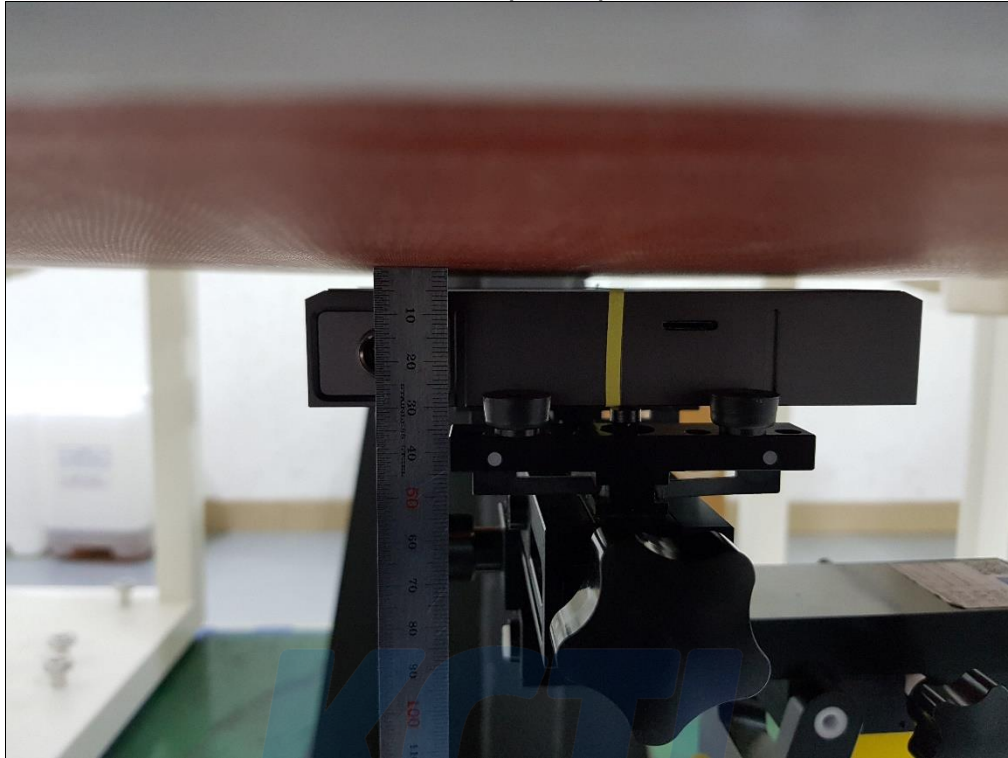


Bottom

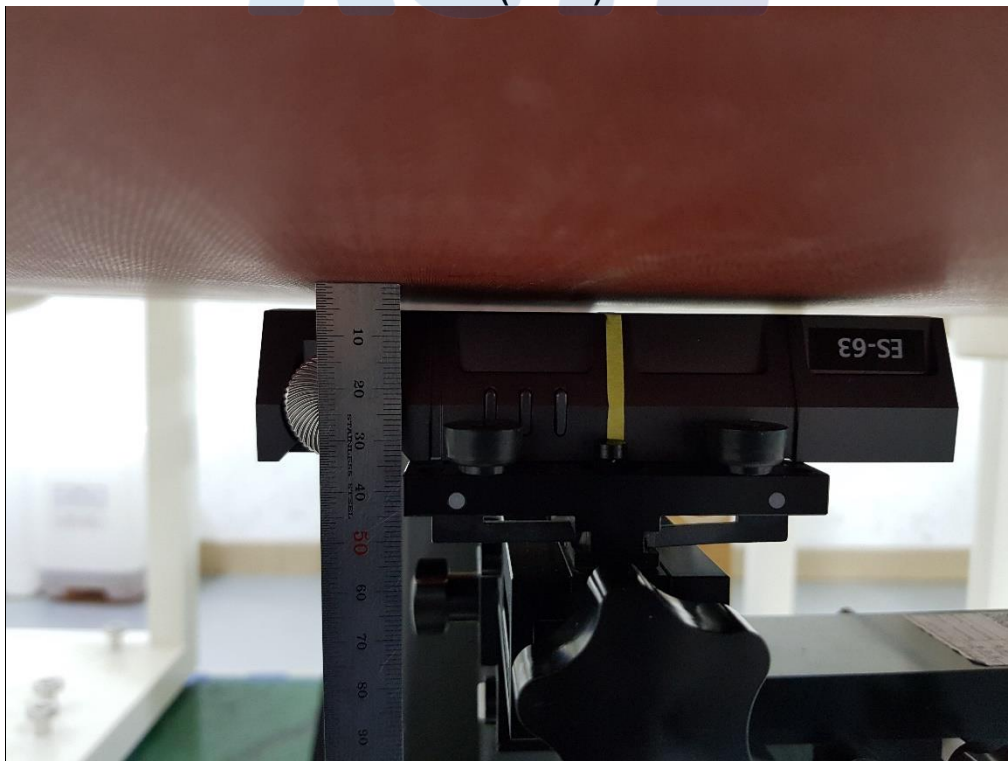


Appendix C. Test Photo

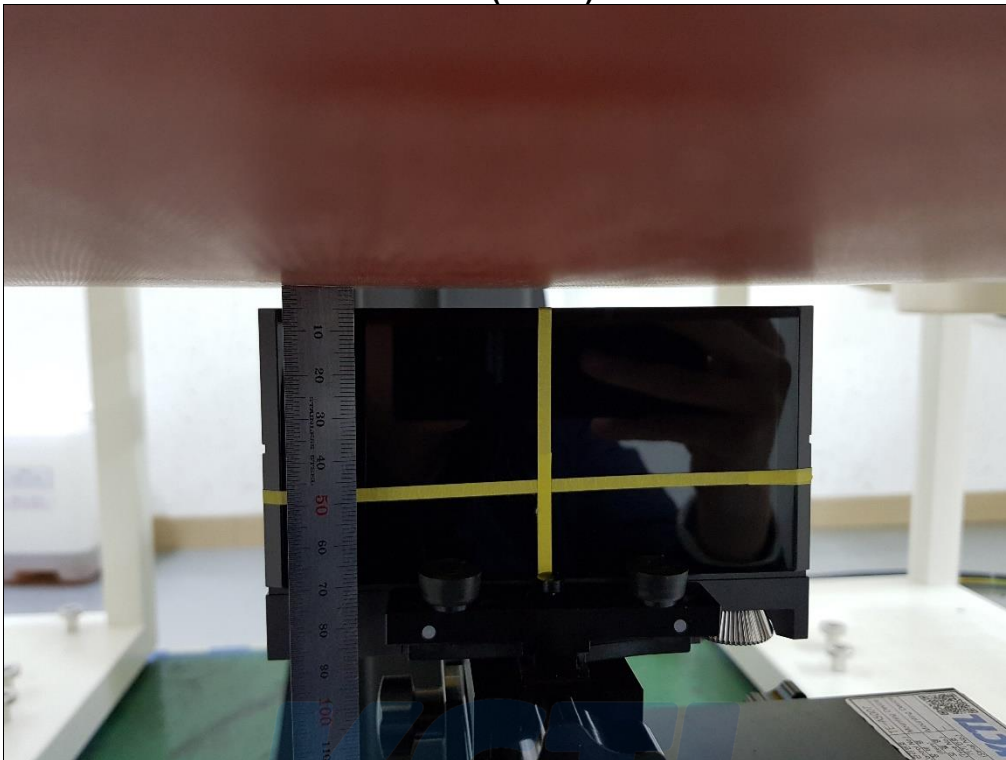
Front (5 mm)



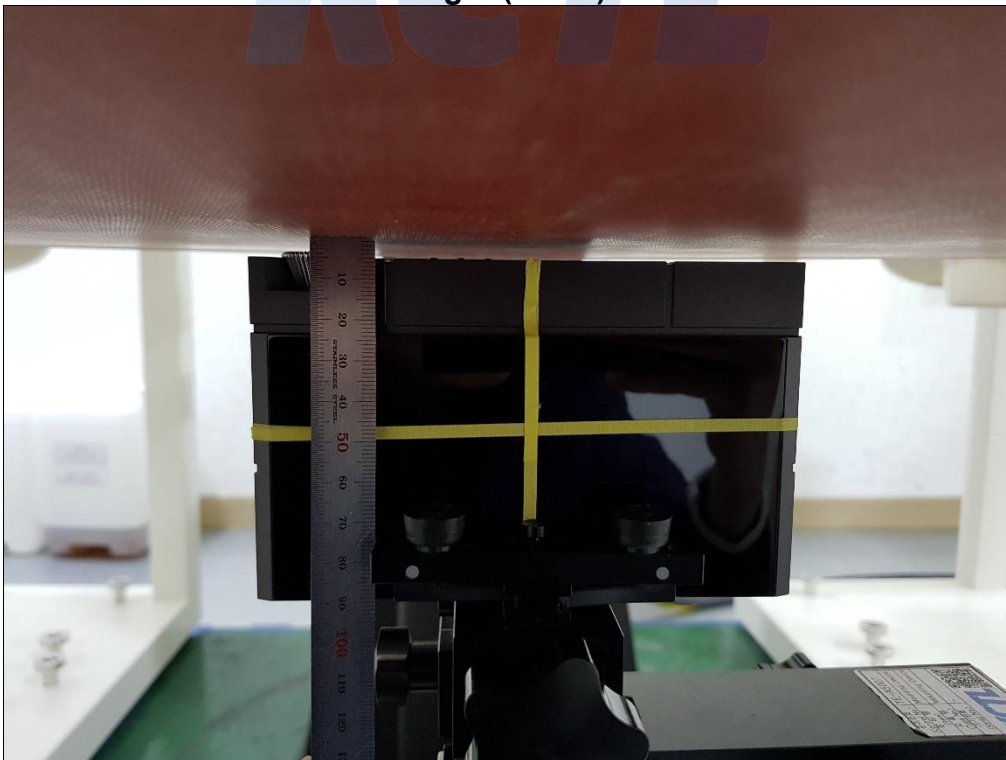
Rear (5 mm)



Left (5 mm)



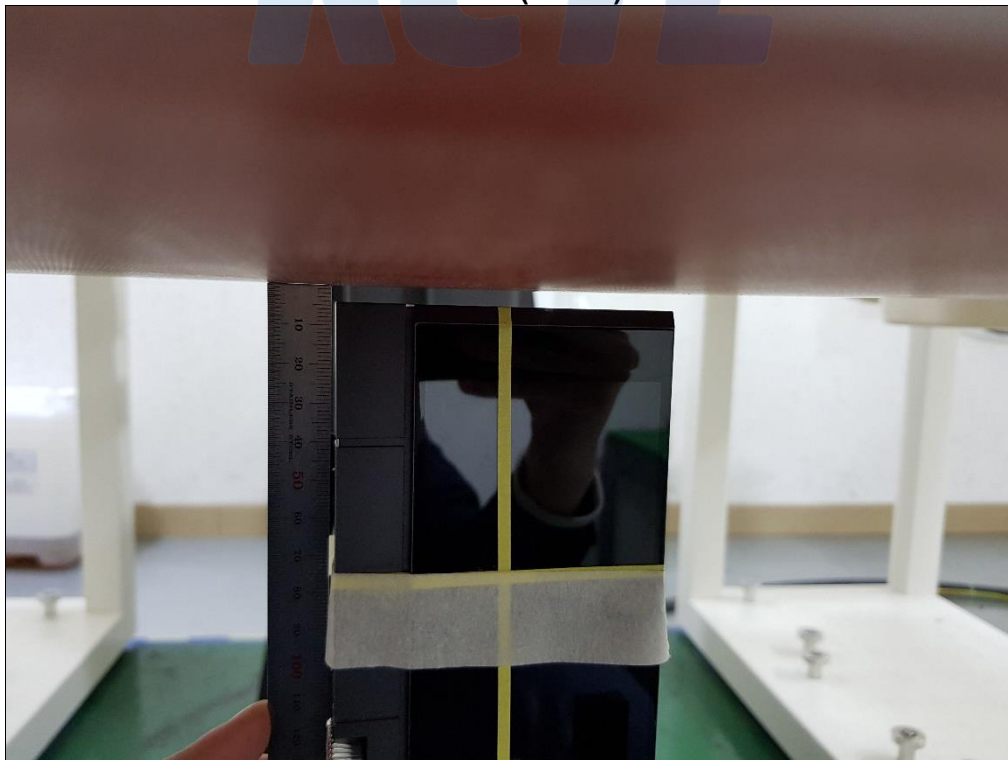
Right (5 mm)



Top (5 mm)



Bottom (5 mm)



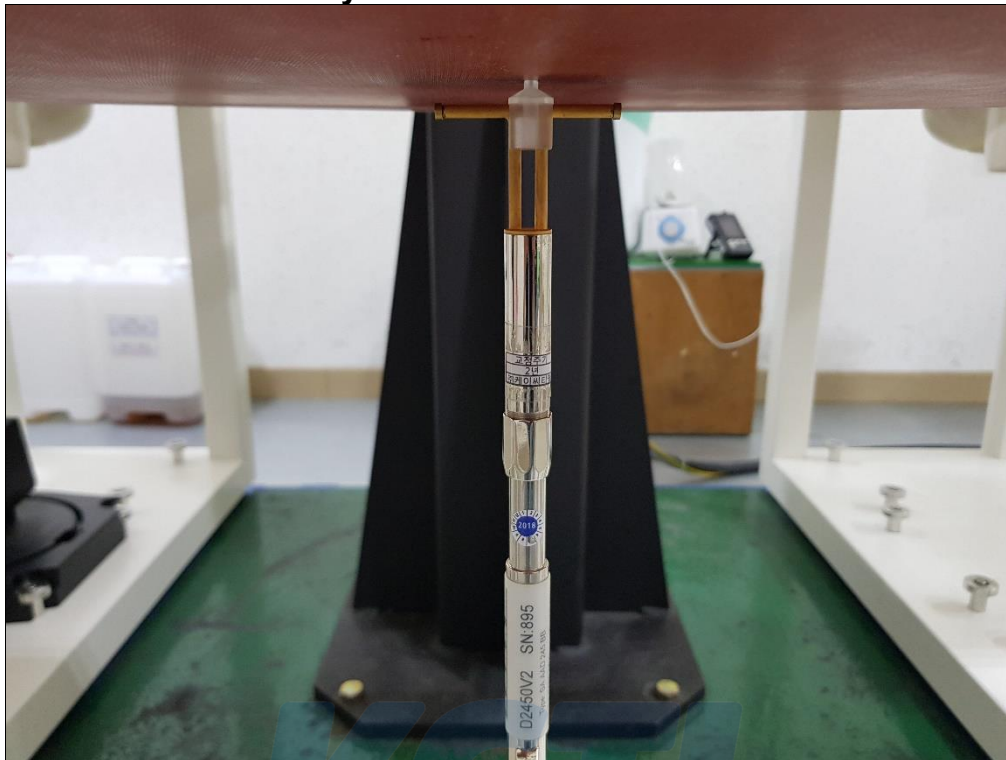
KCTL Inc.

65, Sinwon-ro, Yeongtong-gu,
Suwon-si, Gyeonggi-do, 16677, Korea
TEL: 82-31-285-0894 FAX: 82-505-299-8311
www.kctl.co.kr

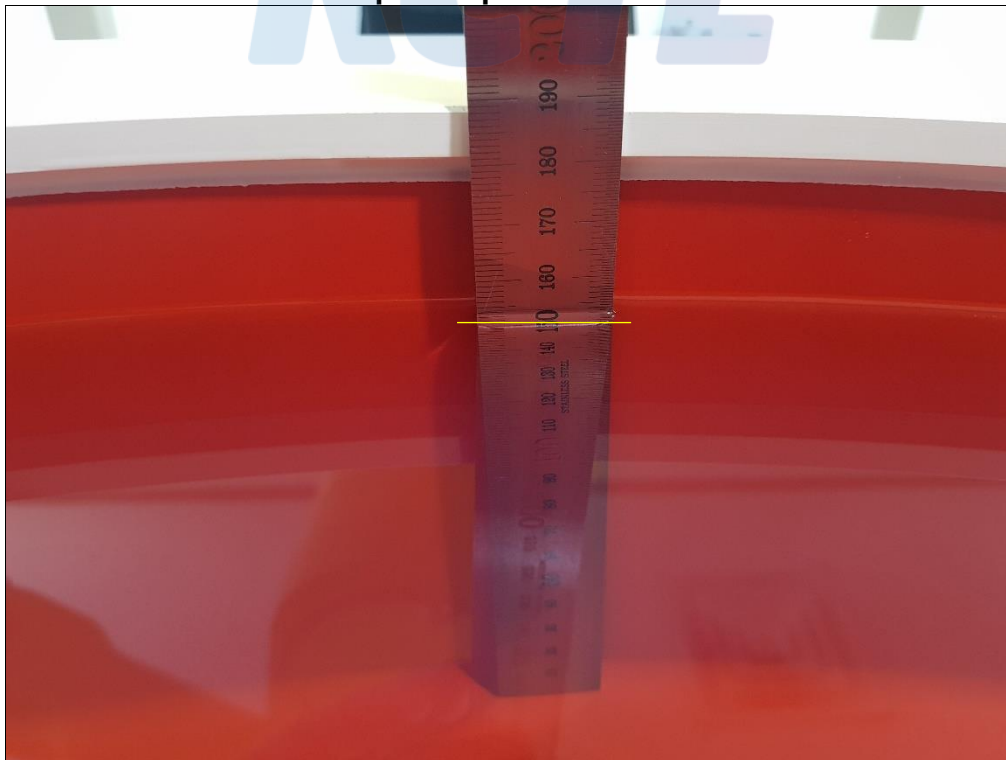
Report No.:
KR19-SPF0008-A
Page (53) of (53)



System Check 2 450 MHz



Liquid Depth MSL 2450



End of test report