



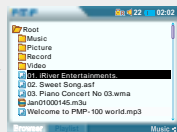
Playlists allows you to play Playlists saved to the player a list of songs to play. You can play the favorite Playlist in the saved order among the files or folders on the player

Using playlists

① Making a new playlist



1 Press the B button to display Browser.



2 Press the SELECT button after selecting file or folder to play by using the ◀▶ button.

Press ▶ button to enter into the folder.

Press ◀ button to go the upper folder.

If select Folder, all files and sub folder in the folder are selected.



3 Press the SELECT button to keep making playlists by using the ◀▶ button.

If select the selected file again, the selection is released.

You can only select files in the same folder.

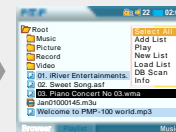
If select another folder, the previous selected file is released.



Using playlists

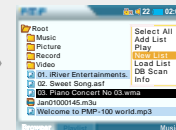


4 Press and hold the SELECT to display the pop-up menu.



5 Press the SELECT button after selecting "New List" by using the ▲▼ button.

New Playlist is created.



6 Press the B button to select "Playlist" screen.

Confirm the added Playlists.



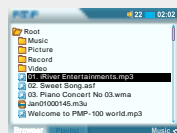


Using playlists

2 Adding playlists



1 Press the B button to select Browser at stop mode.



2 Press the B button after selecting the favorite Playlist by using the ◀▶▶▶ button.



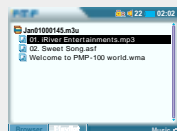
3 Press and hold the SELECT to display the pop-up menu.



4 Press the B button after selecting "Load List" by using the ▶▶▶▶ button.



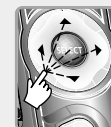
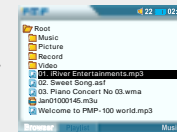
5 Press the B button to select "Playlist" screen. Confirm playlists.



Using Playlists



6 Press the B button to open Browser.

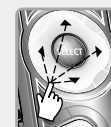


7 Press the B button after selecting the file to add by using the ◀▶▶▶ button.

Press ▶▶▶▶ button to enter into the folder.

Press ◀▶▶▶ button to go the upper folder.

If select Folder, all files and sub folder in the folder are selected.

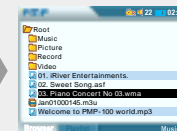


8 Press the SELECT button to keep adding files by using the ◀▶▶▶ button.

If select the selected file again, the selection is released.

You can only select files in the same folder.

If select another folder, the previous selected file is released.





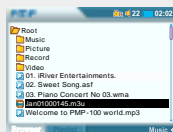
Using playlists



- 9** Press and hold the SELECT to display the pop-up menu.



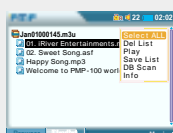
- 10** Press the B button after selecting "Add List" by using the ▲▼ button.



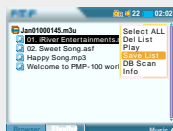
- 11** Press the B button to select "Playlist screen".
Confirm the added playlists.



- 12** Press and hold the SELECT to display the pop-up menu.



- 13** Press the SELECT button after selecting "Save List" by using the ▲▼ button.
The modified playlist is saved.



Using Playlists

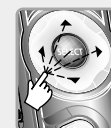
3 Deleting Playlists



- 1** Press the SELECT button after selecting file to delete using the ◀▶ button.



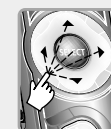
- 2** Press and hold the SELECT button to display the pop-up menu.



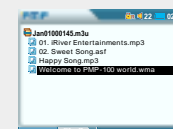
- 3** Press the SELECT button after selecting "Load List" on the pop-up menu using the ▲▼ button.



- 4** Press the B button to select Playlist.



- 5** Select the file to delete using the ▲▼ button on the playlist.

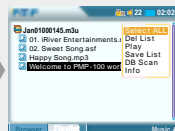




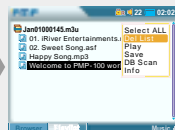
Using playlists



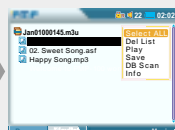
- 6** Press and hold the SELECT button to display the pop-up menu.



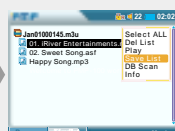
- 7** Press the SELECT button after selecting "Del List" using the ▲▼ button.



- 8** Press and hold the SELECT button to display the pop-up



- 9** Press the SELECT button after selecting "Save List" using the ▲▼ button to save the modified Playlist.
The modified Playlist is saved.

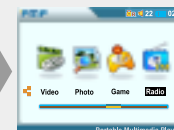


Listen to FM radio

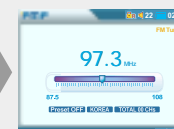
① Listen to FM radio



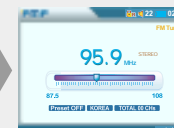
- 1** Press the SELECT button after selecting "Radio" using ◀▶ button to switch to FM mode.
Radio screen is displayed and the former station is receiving.



Earphone and remote control play a role as FM antenna.



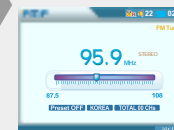
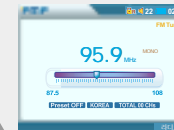
- 2** Press the ◀▶ button to select the favorite station.



② Changing Stereo/Mono



- Press the A button to change Stereo/Mono.
Noise will be heard in weak transmission areas.
At this time, noise is lessened by changing to Mono.





Listen to FM radio

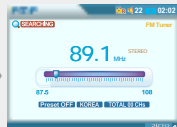
3 Auto memory function (To save the Channels automatically)



1 If "Preset" is displayed, first press the NAVI / MENU button to exit Preset mode.



2 Press and hold the B (EQ/Mode) button. CH01 to CH20 will be saved automatically with the first 20 stations the player finds.



- FM tuner reception will be affected in weak transmission areas.
- When player does not have any preset channels, EMPTY will be blinking.

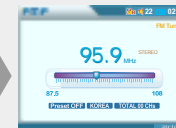


Listen to FM radio

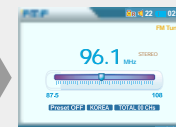
4 Memory Function (Save Channels Manually)



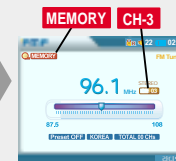
1 If "Preset" is displayed, first press the NAVI / MENU button to exit Preset mode.



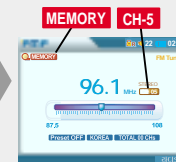
2 Press the ◀▶ button with short or long click and select the desired channel.



3 Press and hold the B (EQ/Mode) button. MEMORY and Channel number will be displayed on the screen.



4 Press the ◀▶ button to select a Channel number to assign to the frequency.





Listen to FM radio



- 5 Press the B(EQ/Mode) button to store the frequency to the selected channel number.



- 6 Press the ►|| button to cancel storing the frequency and return to normal FM operation.



5 Erasing MEMORY (Delete saved stations)



- 1 Select channel to be deleted by pressing ◀▶ button at preset mode.

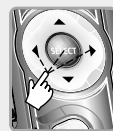


- 2 Push and hold the A(A-B Interval) button to delete the selected station.
The next channel will appear when channel delete is completed.

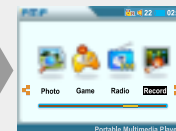


Recording

1 Recording Voice/Source from External Audio Source



- 1 Press the SELECT button after selecting "Record" by using ◀▶ button.



- 2 Press the A button to move Recording setting menu.



- 3 Press the ◀▶ button to set the source to record after selecting the source by using ▲▼ button.

- INT.MIC : To record through the internal microphone
- EXT.MIC : To record through the external microphone
- LINE-IN : To record from the external audio source



- 4 Press ◀▶ button to set each value after selecting Sampling rate/Bit Rate by using the ▲▼ button.



Note • Volume can not be controlled while recording.



Recording



5 Press and hold the ► button twice to go to the Recording Standby Mode.



6 Press the ●(REC) button to start recording.
Press play on your external equipment (if necessary) to begin playback to be recorded.



2 To pause recording



Press the ● (REC) button during recording.
Press the ● (REC) button again to restart recording.



3 Recording as a New file



1 Press and hold the ► button to stop recording.
The mode turns to Recording Standby Mode.



2 Press and hold the ● (REC) button to start recording.
A new recording file is created.



Recording

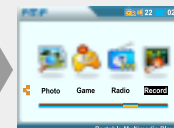
3 To stop recording



1 Press and hold the ► button to stop Recording.



2 Press and hold the ► button to exit Recording Mode at the Recording Standby Mode.
The screen will be changed to Function Selection Mode.



4 To play a recorded file



Press the ► button to play a recorded file at the Recording Standby Mode.



- Recorded files are stored in folders matching the source name from where the audio was recorded.
 - Line In : ROOT\RECORD\Ammdddxxx.MP3
 - INT/EXT Mic : ROOT\RECORD\Vmmdddxxx.MP3
- Recording is automatically stopped if :
 - The player's memory is full.
 - When the recorded MP3 file size is over 195MB
 - When the recorded WAV file size is over 795MB
 - The recorded time is longer than 5 hours.
 - The battery is low.



Searching a file/folder(Browser)

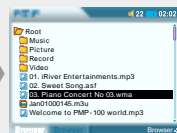
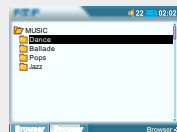
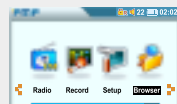
1 Playing a file/folder directly



1 Press the SELECT button after selecting "Browser" using ◀▶ button.

You can select "Browser 1" or "Browser 2" by pressing B button by turns.

The icon of the playable files are displayed and the files that can not be played are displayed as "?".



2 Press the SELECT button after selecting file to play using ◀▶ button.

Press ▶ button to enter into the folder.

Press ◀ button to go the upper folder.



Searching a File/Folder(Browser)



3 Press the SELECT button after adding files to play using ◀▶ button.

Press the SELECT button to cancel the selected file.

You can select files in the same folder. If you select another folder, the selected files are cancelled.



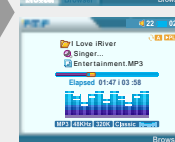
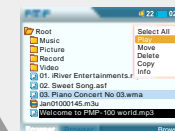
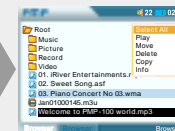
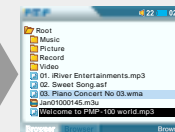
4 Press and hold the SELECT button to select all files in the folder.

Press the SELECT button again after selecting "Select All".



5 Press the ▶ button to play the selected file directly or press the SELECT button after selecting "Play" on the pop-up menu.

The selected files add to Playlist and start playback.



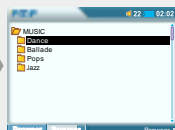


Searching a File/Folder(Browser)

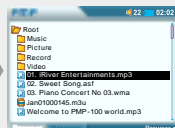
② Deleting/ Copying/ Moving files



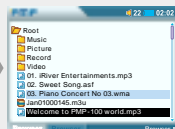
1 Press the ◀▶▲▼ button to select a folder to be copied or moved on the Browser 1 or Browser 2.



2 Press the B button to change Browser 2 or Browser 1. Press the A button to move another Browser after moving to the folder that file to copy is.



3 Press the ◀▶▲▼ button to select a file to copy or move. Press ▶ button to enter into the folder. Press ◀ button to go the upper folder. Press the SELECT button to cancel the selected file. If you select another folder, the selected files are cancelled.



4 Press and hold the SELECT button to display the pop-up menu.

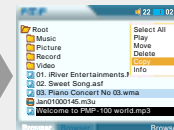


Searching a File/Folder(Browser)

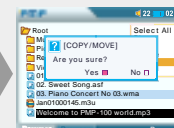


5 Press the SELECT button after selecting “Copy” or “Move” using ▲▼ button.

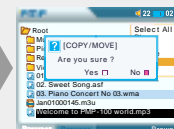
Copy :
Move :



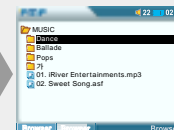
6 Press the SELECT button after selecting “Yes” using ▲▼ button to execute copy/move.



7 Press the SELECT button after selecting “No” using ▲▼ button to cancel copy/move.



8 Press the B button to confirm the copied/moved files.



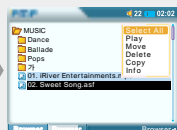


Searching a File/Folder(Browser)

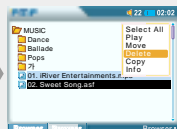
3 Deleting Files/Folders



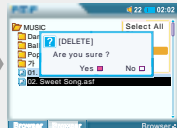
- 1 Press and hold the **SELECT** button to display pop-up menu after selecting files to delete.



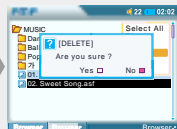
- 2 Press the **SELECT** button after selecting "Delete" using ▲▼ button.



- 3 Press the **SELECT** button after selecting "Yes" using the ◀▶▶ button to delete the selected files.



- 4 Press the **SELECT** button after selecting "No" using the ◀▶▶ button to cancel deleting.

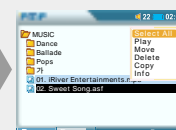


Searching a File/Folder(Browser)

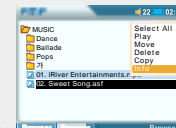
4 Viewing a file information



- 1 Press and hold the **SELECT** button to display the pop-up menu after selecting files to view.



- 2 Press the **SELECT** button after selecting "Info" using ▲▼ button.



- 3 Press the **B (EQ/MODE)** button to exit viewing information about a file.

